



VCS-274^{Q&As}

Administration of Veritas NetBackup 7.7

Pass Veritas VCS-274 Exam with 100% Guarantee

Free Download Real Questions & Answers **PDF** and **VCE** file from:

<https://www.passapply.com/vcs-274.html>

100% Passing Guarantee
100% Money Back Assurance

Following Questions and Answers are all new published by Veritas
Official Exam Center

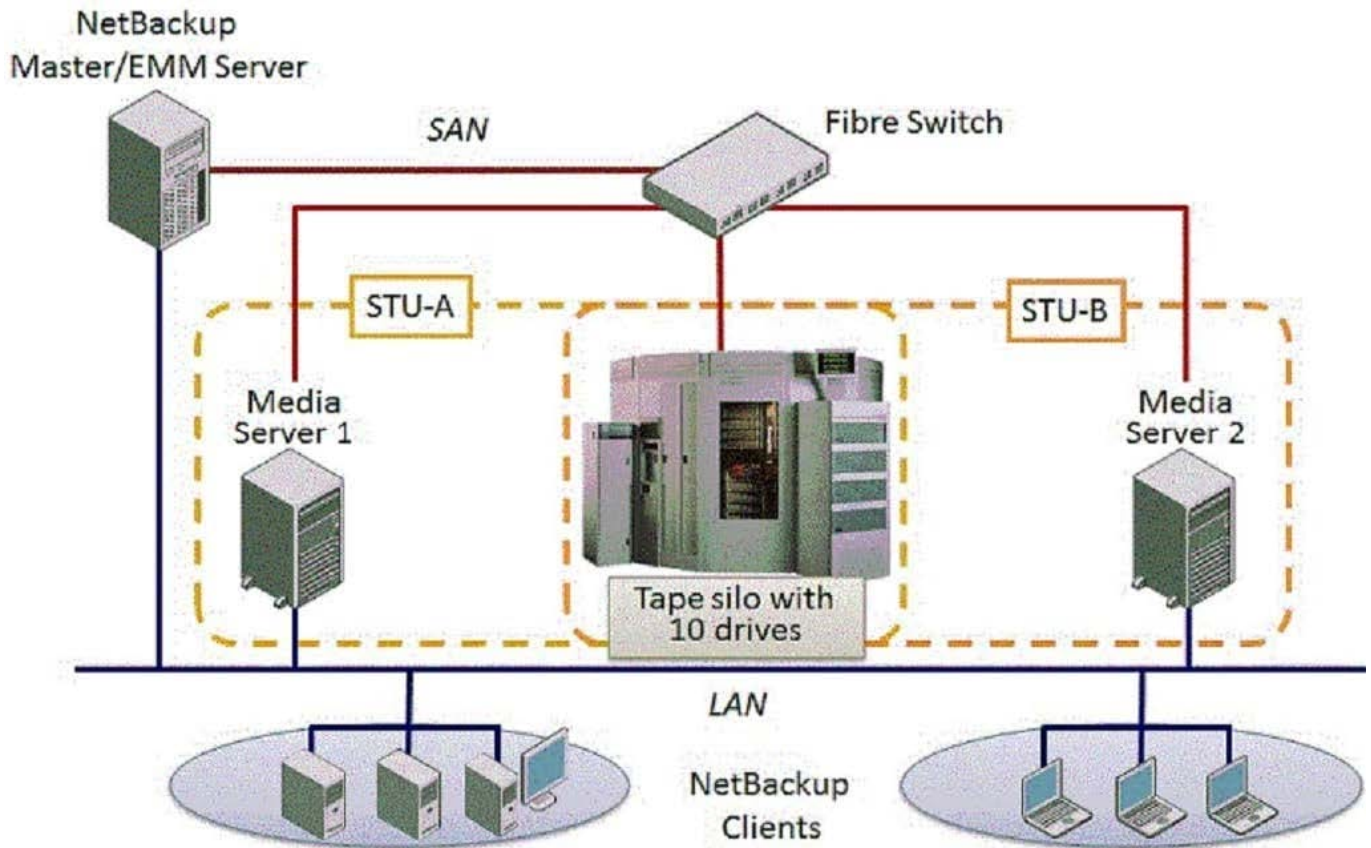
-  **Instant Download** After Purchase
-  **100% Money Back** Guarantee
-  **365 Days** Free Update
-  **800,000+** Satisfied Customers





QUESTION 1

Refer to the exhibit.



Two media servers, sharing a library with 10 tape drives, exist in the NetBackup 7.7 environment displayed in the exhibit. Both weekly full and daily differential incremental backups need to run for the clients and each schedule has a different retention period. Because of network topology, some clients back up to Media Server 1 and some back up to Media Server 2. The environment suffers from multiple status failures during the backup window. How can the administrator minimize the number of failures?

- A. increase the Media unmount delay
- B. configure media multiplexing
- C. enable backups to span tape media
- D. enable media sharing

Correct Answer: D

QUESTION 2

Which interface is pre-configured with the 192.168.229.233 IP address?

- A. bond0



- B. eth0
- C. eth1
- D. IPMI

Correct Answer: B

QUESTION 3

An administrator discovers that backup images configured with a fixed two-week retention are failing to expire.

What is a possible cause of this issue?

- A. the disk pool containing the images is unavailable
- B. secondary SLP operations on the images are incomplete
- C. the tape containing the images is frozen
- D. the disk storage unit is capacity-managed

Correct Answer: B

QUESTION 4

The following storage lifecycle policy was used to back up data from a client. Storage Lifecycle Policy Backup to AdvancedDisk Duplication to tape Duplication to AdvancedDisk How should an administrator restore data from the tape using NetBackup?

- A. from the BAR GUI, select the tape backup to restore from
- B. use bpduplicate command to promote copy 1 to the primary copy
- C. from the NetBackup Administration console, promote copy 1 to the primary copy
- D. from the NetBackup Administration console, promote copy 2 to the primary copy

Correct Answer: D

QUESTION 5

NetBackup has frozen some of the tapes added to the robot. Which log must be enabled to determine why the tapes were frozen?

- A. ltid
- B. robots



- C. bptm
- D. bpdm

Correct Answer: C

QUESTION 6

Which command can an administrator execute on a NetBackup client to measure backup performance?

- A. bpbkar
- B. bptestnetconn
- C. bpcIntcmd
- D. bpclient

Correct Answer: A

QUESTION 7

A Windows policy protects over 100 servers using the directive ALL_LOCAL_DRIVES. The backup window for this policy is a two-hour window that is unused by any other policy. When the jobs run, the overall performance of the disk storage unit is degraded. Which setting should the administrator modify to reduce the number of concurrent streams writing to the disk storage unit to 10 during the backup window?

- A. enable the "Maximum Data streams" property
- B. enable the "Limit Jobs per policy" attribute
- C. set the "Maximum jobs per client" host property to 10
- D. enable multiplexing for the storage unit and set the value to 10

Correct Answer: B

QUESTION 8

A policy is created using the Standard policy type. The default settings are used. Linux hosts s1 and s2 are added in the client list and ALL_LOCAL_DRIVES is specified in the Backup Selection. Host s1 has the mount points listed below: /opt /usr /usr/home Host s2 has the mount points listed below: /proc /tmp /usr How many streams will be created when the policy runs for both clients?

- A. two
- B. four
- C. five
- D. eight



Correct Answer: A

QUESTION 9

An administrator has backups failing with status code 96 due to tapes being prevented from returning to the scratch volume pool after the images they contain expire. What prevented the media from returning to the scratch pool?

- A. media was created in volume pools other than the scratch pool
- B. media was in an off-site location
- C. media was written with multiplexed images
- D. an application other than NetBackup wrote to the media

Correct Answer: A

QUESTION 10

An administrator needs to decrease the total amount of time required to back up a UNIX file server, but requires a full backup every night for recovery purposes.

How should the administrator proceed?

- A. use compression
- B. use Accelerator
- C. use change journal
- D. use client-side deduplication

Correct Answer: B

QUESTION 11

Which operation compares the contents of an image to the NetBackup catalog?

- A. Verify
- B. Duplicate
- C. Import
- D. Rehydrate

Correct Answer: D



QUESTION 12

Which value under Storage Unit Properties reflects the total amount of space allocated to a basic disk storage unit?

- A. Usable size
- B. Capacity
- C. Raw size
- D. Available or Available space

Correct Answer: B

QUESTION 13

Which two actions should an administrator take to allow NetBackup to manage the allocation of volumes to volume pools? (Select two.)

- A. define a scratch pool and add all of the volumes to it so NetBackup will move volumes to the other pools as volumes are needed
- B. assign volumes to all volume pools as required in the environment
- C. define a scratch pool with assigned volumes so NetBackup will move the assigned volumes to other pools as volumes are needed
- D. create volume pools as required, but refrain from adding volumes to the pools
- E. assign volumes to NetBackup and DataStore volume pools so NetBackup will move the assigned volumes to other pools as volumes are needed

Correct Answer: AD

QUESTION 14

Which option is available with a Trusted Master Server?

- A. Backup of other Master Server domains
- B. Duplications
- C. Automatic Image Replication
- D. Catalog backups

Correct Answer: C

QUESTION 15

An administrator initiated a manual backup of clientA on master1. The backup failed with the message:



client is offline(1000)

Which Host Properties setting should an administrator modify to resolve this issue?

- A. Clients > clientA > Windows Client> Client Settings > Offline until
- B. Clients> clientA > Universal Settings> Offline until
- C. Master Servers> master1 > Client Attributes> clientA >General> Offline until
- D. Master Servers> master1 > Client Attributes> clientA > Connect Options> Offline until

Correct Answer: C

[VCS-274 VCE Dumps](#)

[VCS-274 Study Guide](#)

[VCS-274 Exam Questions](#)