



# TEAS-SECTION-2<sup>Q&As</sup>

Test of Essential Academic Skills - Sentence Correction

**Pass TEAS TEAS-SECTION-2 Exam with 100% Guarantee**

Free Download Real Questions & Answers **PDF** and **VCE** file from:

<https://www.passapply.com/teas-section-2.html>

100% Passing Guarantee  
100% Money Back Assurance

Following Questions and Answers are all new published by TEAS  
Official Exam Center

-  **Instant Download** After Purchase
-  **100% Money Back** Guarantee
-  **365 Days** Free Update
-  **800,000+** Satisfied Customers





### QUESTION 1

Maturation and development of T cells takes place in which region?

- A. spleen
- B. bone marrow
- C. lymph nodes
- D. thymus gland

Correct Answer: D

---

### QUESTION 2

Cardiac muscles exhibit which of these features?

- A. striated, involuntary, intercalated discs not present
- B. striated, involuntary, intercalated discs present
- C. striated, voluntary, intercalated discs present
- D. unstriated, involuntary, intercalated discs present

Correct Answer: B

---

### QUESTION 3

Which pyrimidine base is only found in RNA?

- A. adenine
- B. uracil
- C. cytosine
- D. guanine

Correct Answer: B

---

### QUESTION 4

What causes a moving body to resist a change in its state of motion?

- A. its momentum
- B. its speed



- C. its acceleration
- D. its inertia

Correct Answer: D

---

#### QUESTION 5

Which valves are responsible for the sound of the heartbeat?

- A. the hypertension valves
- B. the atrioventricular and semilunar valves
- C. the systole valves
- D. the hydraulic and solenoid valves

Correct Answer: B

---

#### QUESTION 6

Which of these is not a part of the central nervous system?

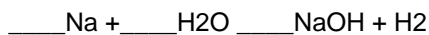
- A. spinal cord
- B. tract (bundle of nerve fibers/axons)
- C. brain
- D. cranial nerves

Correct Answer: D

---

#### QUESTION 7

Balance the following chemical equation by filling in the coefficients that should go in the blanks:



- A.  $2\text{Na} + 2\text{H}_2\text{O} \rightarrow 4\text{NaOH} + \text{H}_2$
- B.  $2\text{Na} + \text{H}_2\text{O} \rightarrow 3\text{NaOH} + \text{H}_2$
- C.  $3\text{Na} + 3\text{H}_2\text{O} \rightarrow 3\text{NaOH} + \text{H}_2$
- D.  $2\text{Na} + 2\text{H}_2\text{O} \rightarrow 2\text{NaOH} + \text{H}_2$

Correct Answer: D

---



### QUESTION 8

On each side of the body, the brachiocephalic veins are formed by the union of which two veins?

- A. external jugular veins and subclavian veins
- B. external jugular and internal jugular veins
- C. common carotid and subclavian veins
- D. internal jugular veins and subclavian veins

Correct Answer: D

---

### QUESTION 9

A body of mass 30 kg is traveling in space at a speed of 10 m/s. Given that the formula for kinetic energy is  $KE = 0.5 mv^2$ , and  $m$  is mass and  $v$  is speed of an object, what is its kinetic energy?

- A. 1000 J
- B. 4600 J
- C. 120 J
- D. 1500 J

Correct Answer: D

---

### QUESTION 10

Which of these is an example of protein-related malnutrition?

- A. scurvy
- B. kwashiorkor
- C. rickets
- D. anemia

Correct Answer: B

---

### QUESTION 11

Which element is essential for the normal production of the hormone thyroxine?

- A. phosphorus
- B. iodine



- C. calcium and vitamin D
- D. magnesium

Correct Answer: B

---

#### QUESTION 12

Gregor Mendel used pea plants to conduct experiments on genetics and heredity. He grew approximately 29,000 plants to study seven characteristics: flower color, seed texture, seed color, stem length, pod color, pod texture, and flower position. Mendel was able to demonstrate that these characteristics were passed from one generation to the next and that the offspring could inherit the characteristics from either one, or from both, of the parent plants.

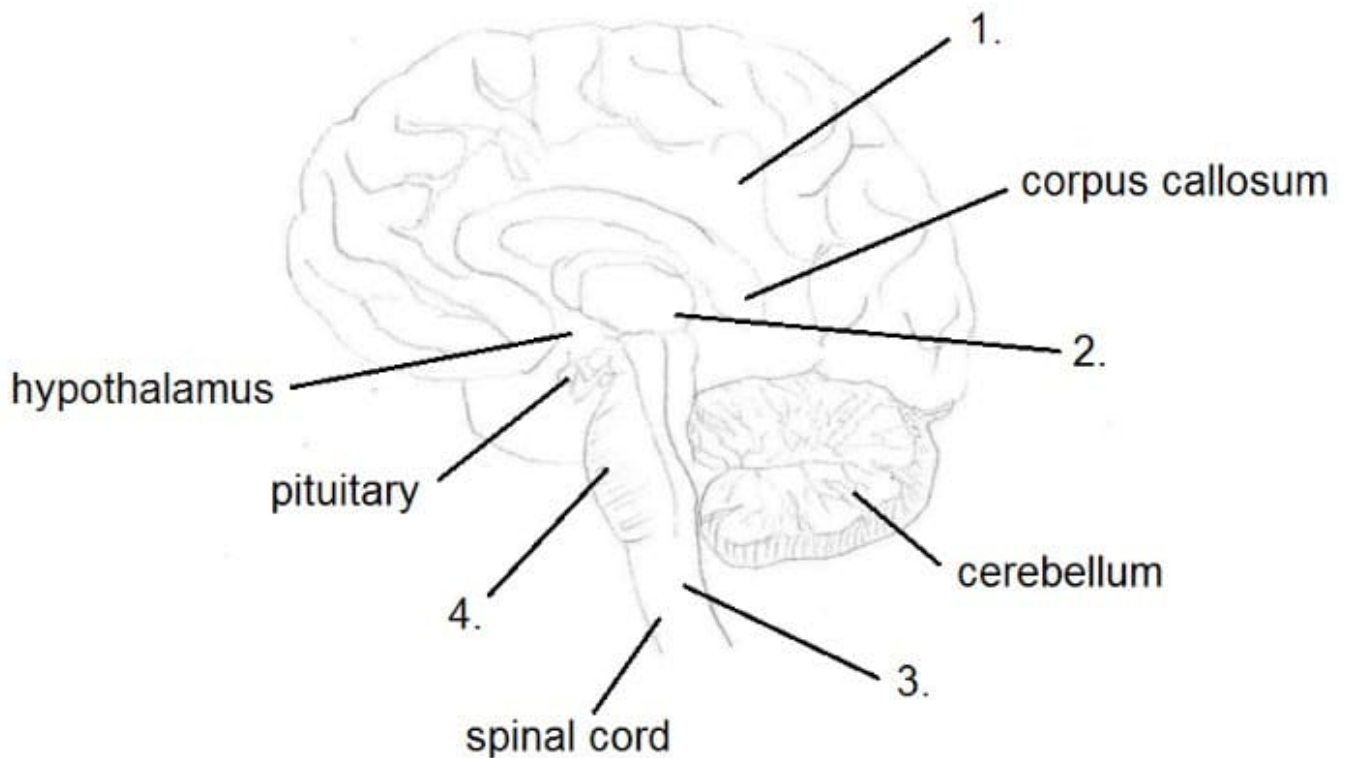
Referring to the passage, tell why it was important that Gregor Mendel used a large number of plants in his experiments into genetics and heredity?

- A. Pea plants are susceptible to disease, so he needed a lot of them to make sure enough would survive to adulthood to allow him to draw his conclusions.
- B. With a large number of plants, he could demonstrate that the results didn't just happen by chance.
- C. It wasn't important at all ?pea plants produce lots of seeds, so he planted them all to see what would happen.
- D. Plants don't have as many genes as animals, so he needed more of them to study genetics properly.

Correct Answer: B

---

#### QUESTION 13



In this diagram of the brain, some of the labels are missing.

What should the labels be?

- A. 1. cerebral cortex, 2. thalamus, 3. medulla oblongata, 4. pons
- B. 1. cerebellum, 2. grey matter, 3. thalamus, 4. hindbrain
- C. 1. forebrain, 2. midbrain, 3. brain stem, 4. pons
- D. 1. hippocampus, 2. fornix, 3. midbrain, 4. pons

Correct Answer: A

**QUESTION 14**

Fill in the blanks:

Vitamin A, also known as \_\_\_\_\_, is a \_\_\_\_\_ vitamin. Its deficiency can lead to \_\_\_\_\_.

- A. ascorbic acid, water-soluble, night blindness
- B. calciferol, fat-soluble, osteoporosis
- C. retinol, water-soluble, osteoporosis
- D. retinol, fat-soluble, night blindness

Correct Answer: D



**QUESTION 15**

What is the role of ribosomes?

- A. waste removal
- B. storage
- C. transport
- D. make proteins

Correct Answer: D

A ribosome is a structure of eukaryotic cells that makes proteins.

[TEAS-SECTION-2 VCE  
Dumps](#)

[TEAS-SECTION-2 Practice  
Test](#)

[TEAS-SECTION-2 Study  
Guide](#)