



# ST0-306<sup>Q&As</sup>

Symantec Enterprise Vault 11.x Technical Assessment

## Pass Symantec ST0-306 Exam with 100% Guarantee

Free Download Real Questions & Answers **PDF** and **VCE** file from:

<https://www.passapply.com/st0-306.html>

100% Passing Guarantee  
100% Money Back Assurance

Following Questions and Answers are all new published by Symantec  
Official Exam Center

-  **Instant Download** After Purchase
-  **100% Money Back** Guarantee
-  **365 Days** Free Update
-  **800,000+** Satisfied Customers





### QUESTION 1

A check of the archive reports shows that only half of the mailboxes are being archived successfully during the scheduled archiving run.

How should the administrator ensure that all of the mailboxes are being archived?

- A. create a new system mailbox and assign it to the archiving task
- B. increase the number of concurrent connections in the archiving task properties from five to ten
- C. increase the number of items per pass from 1000 to 2000
- D. increase the archiving schedule window for the mailbox archiving task

Correct Answer: D

---

### QUESTION 2

Which function does the "Return failed items to inbox" Journaling Policy setting perform when set to "On"?

- A. items with content that failed to be converted are moved from the journal archive back to the journal mailbox
- B. items that failed to be archived are moved back to the journal mailbox when the task starts
- C. items that failed to be archived are moved back to the journal mailbox at scheduled intervals
- D. items with content that failed to be converted are moved from the Vault Service Account's Temp folder back to the journal mailbox

Correct Answer: B

---

### QUESTION 3

A Symantec Enterprise Vault 11.x for Exchange administrator needs to view information on how many items have been archived on a monthly basis.

Which report should the administrator schedule and run?

- A. Items Archival Rate
- B. Archived Items Access
- C. Archived Item Access Trends
- D. Exchange Server Journal Mailbox Archiving Trends

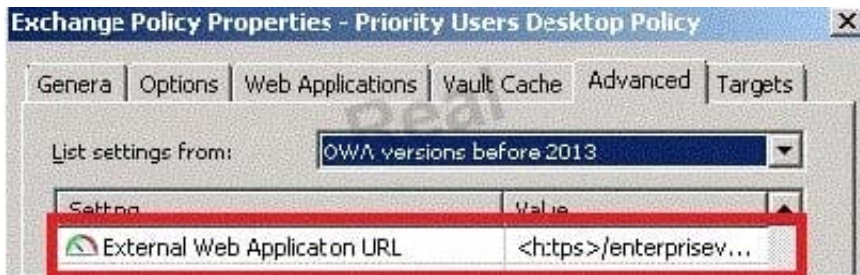
Correct Answer: A

---



#### QUESTION 4

Refer to the exhibit.



When is this policy setting required?

- A. when Enterprise Vault shortcuts are required in OWA 2007 or 2010
- B. when EV Search is required in OWA 2007 or 2010
- C. when the Restore function is required in OWA 2007 or 2010
- D. when the Archive function is required in OWA 2007 or 2010

Correct Answer: B

#### QUESTION 5

A failure of a disk hosting a Vault Store database occurs and this database has to be restored from an earlier backup.

Which tool should the administrator use to ensure the restored database is brought up to date with the archived item information in the partition?

- A. EVSVR
- B. Backtrace
- C. EVDuplicateCleaner
- D. ArchivePoints

Correct Answer: C

#### QUESTION 6

Which step(s) are necessary to install Message Queuing (MSMQ) in preparation for configuring a Windows cluster?

- A. use Computer Manager to manually move c:\windows\system32\msmq to a shared cluster disk resource
- B. use the Windows Failover Cluster Manager to add the Message Queuing resource; in the properties add the MSMQ disk to the resource list



C. use the Component Services snap-in to manually move c:\windows\system32\msmq to a shared cluster disk resource

D. use the Windows Failover Cluster Manager to add the MSMQ resource; add c:\windows\system32\msmq to the resource list and convert it to a shared disk

Correct Answer: B

---

#### QUESTION 7

An administrator views the Indexing subtasks and notices a '\\Change Location\\' subtask with the status '\\Waiting\\'.

Which step must complete for the subtask to continue processing?

A. Enterprise Vault server backup

B. SQL database backup

C. Copy acknowledgement

D. Task restart

Correct Answer: C

---

#### QUESTION 8

Which two reports require monitoring to be enabled? (Select two.)

A. Enterprise Vault Server Task Health Status

B. Enterprise Vault Server Seven Day Health Status

C. Exchange Server Journal Mailbox Archiving Health

D. Archive Item Access

E. Archive item Access Trends

Correct Answer: BC

---

#### QUESTION 9

Which two actions should the administrator consider when adding new Vault Store Partitions to an existing Symantec Enterprise Vault 11.x (EV) environment? (Select two.)

A. Configure the retention settings on WORM devices if applicable

B. Install appropriate device software on the EV server to enable the device to use the streamer API

C. Select the root path to hold files and folders other than those that EV creates



- D. Use overlapping partition folders when using network shares or mount points
- E. Enable the location path of an already existing partition

Correct Answer: AB

---

#### QUESTION 10

A user has mistakenly deleted several items from the mailbox archive. The default site setting "Enable recovery of user deleted items" is selected and set to 14 days. The Enterprise Vault administrator recovers the items.

What is the result of this action?

- A. specified deleted items newer than 14 days will be recovered to the mailbox
- B. all deleted items newer than 14 days will be recovered to the mailbox
- C. all deleted items newer than 14 days will be recovered to the archive
- D. specified deleted items newer than 14 days will be recovered to a PST

Correct Answer: C

---

#### QUESTION 11

In which two instances is a check for secured items performed on NTFS Partitions if Use the Archive attribute is set? (Select two.)

- A. when the Backup has completed successfully
- B. when Backup Mode is set on the Vault Stores
- C. when the Storage Service is started
- D. when the trigger file is found
- E. when Backup Mode is cleared on the Vault Stores

Correct Answer: CE

---

#### QUESTION 12

Which two user configuration choices are available within the Preferences menu of Enterprise Vault Search (EVS)? (Select two.)

- A. Configure multiple mailboxes to access for searching
- B. Select the position of the reading pane or turn it off
- C. Enable Hit Highlighting and specify the color



- D. Choose custom company logo to display in the results page
- E. Add additional sidebars for other archiving targets such as File System Archiving

Correct Answer: BC

---

### QUESTION 13

An administrator is using quota based archiving and has to wait until archived items have been backed up before storage in Exchange is reduced.

Which option should the administrator select to reduce the time after archiving for shortcut creation while maintaining the secure backup option?

- A. Sharing configured per Vault Store
- B. Sharing configured per Vault Store Group
- C. Vault Store configured with "Yes, in storage queue"
- D. Vault Store configured with "No, remove immediately after archive"

Correct Answer: C

---

### QUESTION 14

A customer requires different retention categories for items in users\' mailbox folders.

Which two options could an administrator use to assign different retention categories to items in the specified folders? (Select two.)

- A. Enterprise Vault Archive settings
- B. Exchange Mailbox policy
- C. Exchange Managed folders
- D. Enterprise Vault Policy Manager
- E. Enterprise Vault Desktop policy

Correct Answer: CD

---

### QUESTION 15

An administrator would like to provide a user with the ability to manually submit PST files for migration from Outlook into Symantec Enterprise Vault 11.x and ensure the user has the ability to choose what retention category is assigned to the PSTs selected for migration.

Which steps should the administrator perform to ensure the user has this capability?



- A. Desktop Policy > Options tab > Submit PST file button > Advanced > Outlook Add-in behavior from Light to Full
- B. Mailbox Policy > Archiving Actions tab > clear Force users to use policy and target settings for mailbox archiving
- C. PST Migration Policy > Migration tab > Allow PST Submission > Allow retention category override
- D. PST Migration Policy > Migration tab > Allow PST Submission > Prompt for Retention Category

Correct Answer: C

[Latest ST0-306 Dumps](#)

[ST0-306 Exam Questions](#)

[ST0-306 Braindumps](#)