



SC-300^{Q&As}

Microsoft Identity and Access Administrator

Pass Microsoft SC-300 Exam with 100% Guarantee

Free Download Real Questions & Answers **PDF** and **VCE** file from:

<https://www.passapply.com/sc-300.html>

100% Passing Guarantee
100% Money Back Assurance

Following Questions and Answers are all new published by Microsoft
Official Exam Center

-  **Instant Download** After Purchase
-  **100% Money Back** Guarantee
-  **365 Days** Free Update
-  **800,000+** Satisfied Customers





QUESTION 1

You have a Microsoft 365 E5 subscription that contains a web app named App1.

Guest users are regularly granted access to App1.

You need to ensure that the guest users that have NOT accessed App1 during the past 30 days have their access removed. The solution must minimize administrative effort.

What should you configure?

- A. a Conditional Access policy
- B. a compliance policy
- C. a guest access review
- D. an access review for application access

Correct Answer: D

QUESTION 2

You have an Azure Active Directory (Azure AD) tenant.

You configure self-service password reset (SSPR) by using the following settings:

1.

Require users to register when signing in: Yes

2.

Number of methods required to reset: 1

What is a valid authentication method available to users?

- A. home prions
- B. mobile app notification
- C. a mobile app code
- D. an email to an address in your organization

Correct Answer: D

A one-gate policy requires one piece of authentication data, such as an email address or phone number.

A one-gate policy applies in the following circumstances:



It\\s within the first 30 days of a trial subscription; or

A custom domain hasn\\t been configured for your Azure AD tenant so is using the default *.onmicrosoft.com. The default *.onmicrosoft.com domain isn\\t recommended for production use; and Azure AD Connect isn\\t synchronizing identities.

Reference:

<https://docs.microsoft.com/en-us/azure/active-directory/authentication/concept-sspr-policy#administrator-reset-policy-differences>

QUESTION 3

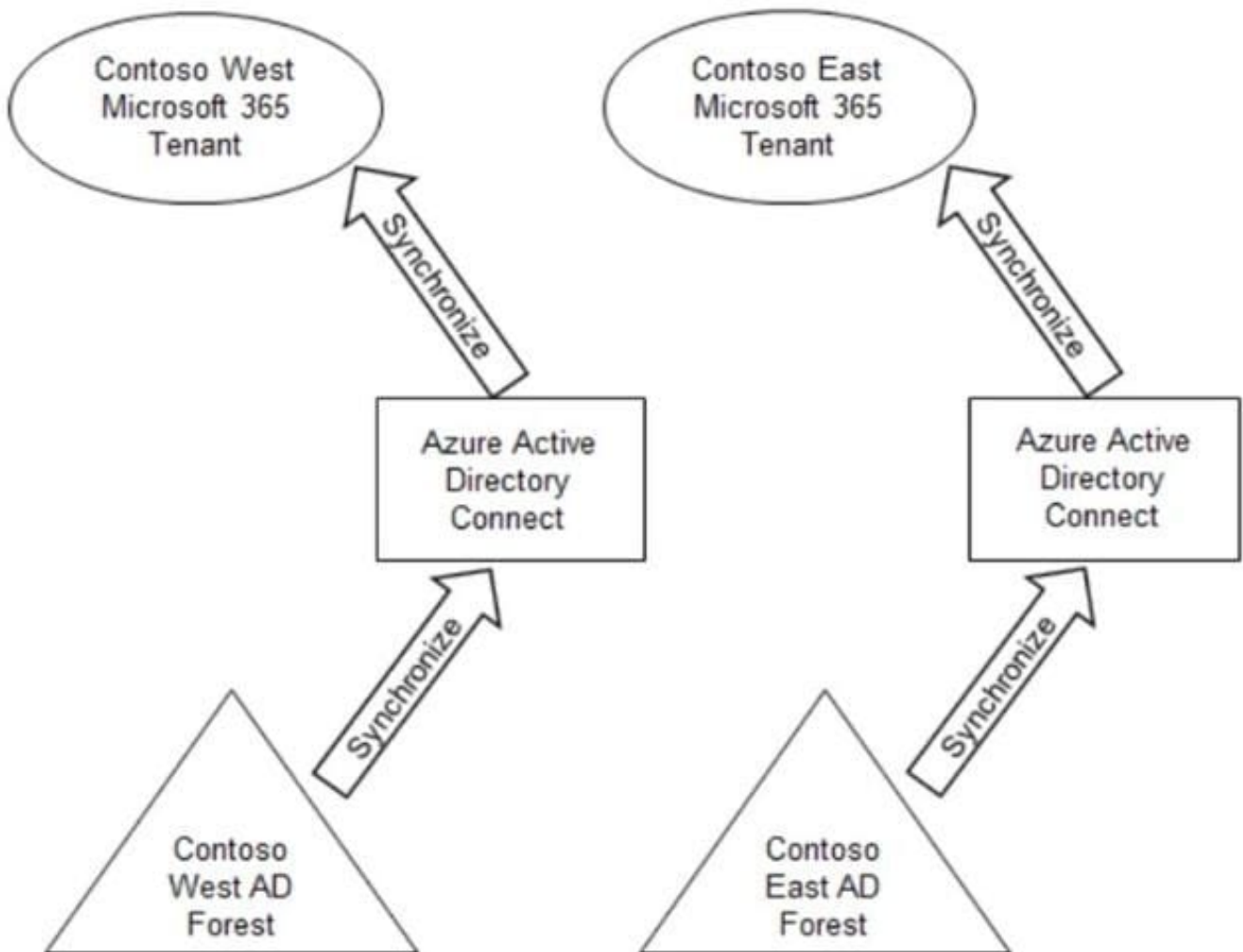
You need to modify the settings of the User administrator role to meet the technical requirements. Which two actions should you perform for the role? Each correct answer presents part of the solution. NOTE: Each correct selection is worth one point.

- A. Select Require justification on activation.
- B. Set all assignments to Active.
- C. Set all assignments to Eligible.
- D. Modify the Expire eligible assignments after setting.
- E. Select Require ticket information on activation.

Correct Answer: AC

QUESTION 4

Your company has two divisions named Contoso East and Contoso West. The Microsoft 365 identity architecture for both divisions is shown in the following exhibit.



You need to assign users from the Contoso East division access to Microsoft SharePoint Online sites in the Contoso West tenant. The solution must not require additional Microsoft 365 licenses. What should you do?

- A. Configure Azure AD Application Proxy in the Contoso West tenant.
- B. Invite the Contoso East users as guests in the Contoso West tenant.
- C. Deploy a second Azure AD Connect server to Contoso East and configure the server to sync the Contoso East Active Directory forest to the Contoso West tenant.
- D. Configure the existing Azure AD Connect server in Contoso East to sync the Contoso East Active Directory forest to the Contoso West tenant.

Correct Answer: B

QUESTION 5

You have a Microsoft 365 E5 subscription.



You create a user named User1.

You need to ensure that User1 can update the status of Identity Secure Score improvement actions.

Solution: You assign the Exchange Administrator role to User1.

Does this meet the goal?

- A. Yes
- B. No

Correct Answer: A

QUESTION 6

You have an Azure Active Directory (Azure AD) tenant that contains the users shown in the following table.

Name	Member of
User1	Group1
User2	Group2
User3	Group3

The tenant has the authentication methods shown in the following table.

Method	Target	Enabled
FIDO2	Group2	Yes
Microsoft Authenticator app	Group1	Yes
SMS	Group3	Yes

Which users will sign in to cloud apps by matching a number shown in the app with a number shown on their phone?

- A. User1 only
- B. User2 only
- C. User3 only
- D. User1 and User2 only
- E. User2 and User3 only

Correct Answer: A



QUESTION 7

You have an Azure Active Directory (Azure AD) tenant.

For the tenant. Users can register applications Is set to No.

A user named Admin1 must deploy a new cloud app named App1.

You need to ensure that Admin1 can register App1 in Azure AD. The solution must use the principle of least privilege.

Which role should you assign to Admin1?

- A. Application developer in Azure AD
- B. App Configuration Data Owner for Subscription1
- C. Managed Application Contributor for Subscription1
- D. Cloud application administrator in Azure AD

Correct Answer: A

Reference: <https://docs.microsoft.com/en-us/azure/active-directory/roles/delegate-app-roles>

QUESTION 8

HOTSPOT

You have an Azure Active Directory (Azure AD) tenant that has the default App registrations settings. The tenant contains the users shown in the following table.

Name	Role
Admin1	Application administrator
Admin2	Application developer
Admin3	Cloud application administrator
User1	User

You purchase two cloud apps named App1 and App2. The global administrator registers App1 in Azure AD.

You need to identify who can assign users to App1, and who can register App2 in Azure AD.

What should you identify? To answer, select the appropriate options in the answer area.

NOTE: Each correct selection is worth one point.

Hot Area:



Answer Area

Can assign users to App1:

	▼
Admin1 only	
Admin3 only	
Admin1 and Admin3 only	
Admin1, Admin2, and Admin3 only	
Admin1, Admin2, Admin3, and User1	

Can register App2 in Azure AD:

	▼
Admin1 only	
Admin3 only	
Admin1 and Admin3 only	
Admin1, Admin2, and Admin3 only	
Admin1, Admin2, Admin3, and User1	

Correct Answer:



Answer Area

Can assign users to App1:

Admin1 only
Admin3 only
Admin1 and Admin3 only
Admin1, Admin2, and Admin3 only
Admin1, Admin2, Admin3, and User1

Can register App2 in Azure AD:

Admin1 only
Admin3 only
Admin1 and Admin3 only
Admin1, Admin2, and Admin3 only
Admin1, Admin2, Admin3, and User1

QUESTION 9

You have the Azure resources show in the following table.

Name	Description
User1	User account
Group1	Security group that uses the Dynamic user membership type
VM1	Virtual machine with a system-assigned managed identity
App1	Enterprise application
RG1	Resource group

Which identities can you assign the Contributor role for RG1?

- A. User1 only
- B. User1 and Group1 only
- C. User1 and VM1 only
- D. User1, VM1, and App1 only
- E. User1, Group1, VM1, and App1



Correct Answer: E

QUESTION 10

You use Azure Monitor to analyze Azure Active Directory (Azure AD) activity logs.

You receive more than 100 email alerts each day for tailed Azure AD user sign-in attempts.

You need to ensure that a new security administrator receives the alerts instead of you.

Solution: From Azure monitor, you modify the action group.

Does this meet the goal?

A. Yes

B. No

Correct Answer: A

QUESTION 11

DRAG DROP

You have an on-premises Microsoft Exchange organization that uses an SMTP address space of contoso.com.

You discover that users use their email address for self-service sign-up to Microsoft 365 services.

You need to gain global administrator privileges to the Azure Active Directory (Azure AD) tenant that contains the self-signed users.

Which four actions should you perform in sequence? To answer, move the appropriate actions from the list of actions to the answer area and arrange them in the correct order.

Select and Place:



Actions

- Sign in to the Microsoft 365 admin center.
- Create a self-signed user account in the Azure AD tenant.
- From the Microsoft 365 admin center, add the domain name.
- Respond to the Become the admin message.
- From the Microsoft 365 admin center, remove the domain name.
- Create a TXT record in the contoso.com DNS zone.

Answer Area



Correct Answer:

Actions

-
-
- From the Microsoft 365 admin center, add the domain name.
-
- From the Microsoft 365 admin center, remove the domain name.
-

Answer Area

- Create a self-signed user account in the Azure AD tenant.
- Sign in to the Microsoft 365 admin center.
- Respond to the Become the admin message.
- Create a TXT record in the contoso.com DNS zone.

QUESTION 12

HOTSPOT

You have a Microsoft 365 tenant.

Sometimes, users use external, third-party applications that require limited access to the Microsoft 365 data of the respective user. The users register the applications in Azure Active Directory (Azure AD).

You need to receive an alert if a registered application gains read and write access to the users



Correct Answer:

Answer Area

Tool to use:

	▼
Azure AD Identity Protection	
Identity Governance	
Microsoft Cloud App Security	
Microsoft Endpoint Manager	

Policy type to create:

	▼
App discovery	
App protection	
Conditional access	
OAuth app	
Sign-in risk	
User risk	

QUESTION 13

You have an Azure Active Directory (Azure AD) tenant that contains cloud-based enterprise apps.

You need to group related apps into categories in the My Apps portal.

What should you create?

- A. tags
- B. collections
- C. naming policies
- D. dynamic groups

Correct Answer: B



Reference: <https://support.microsoft.com/en-us/account-billing/customize-app-collections-in-the-my-apps-portal-2dae6b8a-d8b0-4a16-9a5d-71ed4d6a6c1d>

QUESTION 14

HOTSPOT

You need to meet the technical requirements for the probability that user identities were compromised.

What should the users do first, and what should you configure? To answer, select the appropriate options in the answer area. NOTE: Each correct selection is worth one point.

Hot Area:

Answer Area

The users must first:

<input type="text"/>
Provide consent for any app to access the data of Contoso.
Register for multi-factor authentication (MFA).
Register for self-service password reset (SSPR).

You must configure:

<input type="text"/>
A sign-in risk policy
A user risk policy
An Azure AD Password Protection policy

Correct Answer:

Answer Area

The users must first:

<input type="text"/>
Provide consent for any app to access the data of Contoso.
Register for multi-factor authentication (MFA).
Register for self-service password reset (SSPR).

You must configure:

<input type="text"/>
A sign-in risk policy
A user risk policy
An Azure AD Password Protection policy



Reference: <https://docs.microsoft.com/en-us/azure/active-directory/identity-protection/concept-identity-protection-policies>

QUESTION 15

You need to meet the planned changes for the User administrator role. What should you do?

- A. Create an access review.
- B. Create an administrative unit.
- C. Modify Active assignments.
- D. Modify Role settings.

Correct Answer: D

Role Setting details is where you need to be: Role setting details - User Administrator Privileged Identity Management | Azure AD roles Default Setting State Require justification on activation Yes Require ticket information on activation No On activation, require Azure MFA Yes Require approval to activate No Approvers None

Reference: <https://docs.microsoft.com/en-us/azure/active-directory/privileged-identity-management/pim-how-to-add-role-to-user?tabs=new>

[SC-300 Practice Test](#)

[SC-300 Study Guide](#)

[SC-300 Braindumps](#)