



# PL-400<sup>Q&As</sup>

Microsoft Power Platform Developer

## Pass Microsoft PL-400 Exam with 100% Guarantee

Free Download Real Questions & Answers **PDF** and **VCE** file from:

<https://www.passapply.com/pl-400.html>

100% Passing Guarantee  
100% Money Back Assurance

Following Questions and Answers are all new published by Microsoft  
Official Exam Center

-  **Instant Download** After Purchase
-  **100% Money Back** Guarantee
-  **365 Days** Free Update
-  **800,000+** Satisfied Customers





### QUESTION 1

You need to implement the background verification check stage field. Which type of field should you use?

- A. Choice
- B. Status
- C. Choices
- D. Lookup

Correct Answer: B

The solution must include fields for the candidate's record to represent each stage.

### QUESTION 2

#### HOTSPOT

The planning department for municipal government wants to survey the land in town and define new property lines. You define a data model for the surveys.

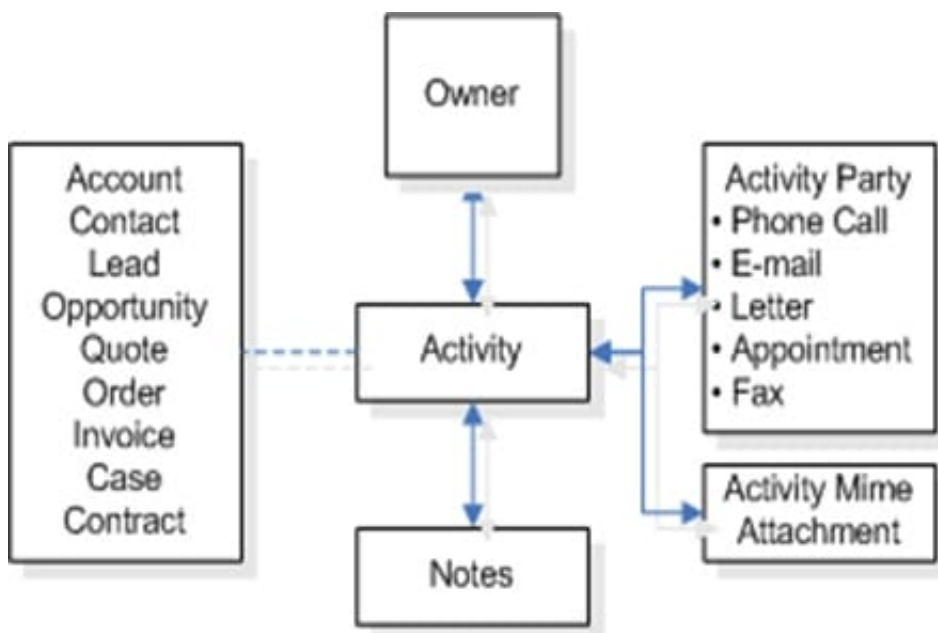
Surveyors and other department employees need a phone app to capture survey data.

You need to define a Power Apps component framework (PCF) component to be used across multiple functional areas.

How should you complete the PCF control manifest? To answer, select the appropriate options in the answer area.

NOTE: Each correct selection is worth one point.

Hot Area:





Correct Answer:

### Answer Area

```
<manifest>
  <control namespace="surveyCapture" constructor="Survey" ...>
    <property name="propertyRollNo" of-type-group="SingleLine.Text"
      usage="bound" required="true" />

    <property name="latitude" of-type-group="
      <table border="1" data-bbox="568 295 771 376">
|  |
| --- |
| Decimal |
| Whole.None |
| Floating point |


      "
      usage="input" required="true" />
    . . .
  <feature-usage>
    <uses-feature name="Device.getCurrentPosition" required="true" />
    <uses-feature name="
      <table border="1" data-bbox="396 463 599 544">
| Client |
| Utility |
| Web API |


      " required="true" />
  </feature-usage>
  <resources>
    . . .
  </resources>
</control>
</manifest>
```

In Microsoft Dataverse, activities are tasks that you or your teams perform when they contact customers, for example, sending letters or making telephone calls.



## Answer Area

```
<manifest>
  <control namespace="surveyCapture" constructor="Survey" ...>
    <property name="propertyRollNo" of-type-group="SingleLine.Text"
      usage="bound" required="true" />

    <property name="latitude" of-type-group="
      <table border="1" data-bbox="568 268 771 348" style="display: inline-table; vertical-align: middle; margin-left: 10px;">
|  |
| --- |
| Decimal |
| Whole.None |
| Floating point |


      "
      usage="input" required="true" />
    . . .
    <feature-usage>
      <uses-feature name="Device.getCurrentPosition" required="true" />
      <uses-feature name="
        <table border="1" data-bbox="398 435 598 515" style="display: inline-table; vertical-align: middle; margin-left: 10px;">
| Client |
| Utility |
| Web API |


        " required="true" />
    </feature-usage>
    <resources>
      . . .
    </resources>
  </control>
</manifest>
```

Box 1: Decimal

Latitudes range from -90 to +90 (degrees), so DECIMAL is ok.

Decimal - Up to 10 decimal points of precision can be used for values between -100,000,000,000 and 100,000,000,000 can be in this column. You can specify the level of precision and the maximum and minimum values.

Note: of-type-group – In some cases, we will need to configure a property that may be of different types (Eg: You need to configure a property with a Decimal or whole number CRM field in such cases you can use type-group).

of-type-group - Name of the type-group as defined in manifest.

The list of property types that can be created are

Whole.None, TwoOptions, DateAndTime.DateOnly, DateAndTime.DateAndTime, Decimal, Enum, FP, Multiple, Currency, OptionSet, SingleLine.Email, SingleLine.Text, SingleLine.TextArea, SingleLine.URL, SingleLine.Ticker,

SingleLine.Phone

Incorrect:



\*

Whole.None - This option simply displays a number.

\*

Floating point

No such option. There is FP - Up to 5 decimal points of precision can be used for values between -100,000,000,000 and -100,000,000,000 can be in this column. You can specify the level of precision and the maximum and minimum values.

Box 2: Web API

uses-feature indicates which feature the code components want to use.

Web API provides properties and methods to use Web API to create and manage records.

Available for Model-driven apps, canvas apps, and portals.

Available for Model-driven apps, canvas apps, and portals.

Incorrect:

\*

Client is not an option.

\*

Utility provides a container for useful methods. It is available for Model-driven apps.

Reference: <https://docs.microsoft.com/en-us/power-apps/developer/component-framework/manifest-schema-reference/property> <https://blog.magnetismsolutions.com/blog/jaredjohnson/2019/09/27/new-uses-feature-manifest-element-in-powerapps-component-framework-controls> <https://docs.microsoft.com/en-us/power-apps/developer/component-framework/reference/webapi> <https://docs.microsoft.com/en-us/power-apps/developer/component-framework/reference/utility>

---

### QUESTION 3

You need to improve the efficiency of counting warehouse inventory. What should you create?

- A. a model-driven app that allows the user to key in inventory counts
- B. a Power BI dashboard that shows the inventory counting variances
- C. a flow that updates the warehouse counts as the worker performs the count
- D. a canvas app that scans barcodes to allow a warehouse worker to select inventory counts

Correct Answer: D

Scenario: Warehouse counting is performed manually by using a counting journal. All warehouse boxes and items are barcoded. Barcode scanner control for canvas apps: Scans barcodes, QR codes, and data-matrix codes on an Android or iOS device. Description



The control opens a native scanner on an Android or iOS device. The scanner automatically detects a barcode, a QR code, or a data-matrix code when in view.

Reference:

<https://docs.microsoft.com/en-us/powerapps/maker/canvas-apps/controls/control-new-barcode-scanner>

---

#### QUESTION 4

You are implementing custom business logic in a Power Apps portal.

You need to use Liquid templates to display dynamic content.

To which three entities can you include Liquid code? Each correct answer presents a complete solution.

NOTE: Each correct selection is worth one point.

- A. Content snippet
- B. Web page
- C. Web template
- D. Page template
- E. Portal settings

Correct Answer: BCD

Liquid is an open-source template language integrated into portals. It can be used to add dynamic content to pages, and to create a wide variety of custom templates. Using Liquid, you can:

Add dynamic content directly to the Copy field of a webpage or the content of a content snippet.

Store source content by using web templates, entirely through configuration within Power Apps, for use throughout the Power Apps portals content management system.

Render a website header and primary navigation bar, entirely through configuration within Power Apps.

Note: page is one of the available liquid objects.

Reference:

<https://docs.microsoft.com/en-us/powerapps/maker/portals/liquid/liquid-overview> <https://docs.microsoft.com/en-us/powerapps/maker/portals/liquid/liquid-objects#page>

---

#### QUESTION 5

A company is creating a one-way integration from the Common Data Service to an external system. Data will be sent from a webhook to an Azure Function.

You need to configure the Azure Function to handle data from the webhook.



Which class and data type must the Azure Function handle?

- A. RemoteExecutionContext in .NET binary format
- B. RemoteExecutionContext in JSON format
- C. RemoteExecutionContext in XML format
- D. IPluginExecutionContext in JSON format
- E. IPluginExecutionContext in XML format

Correct Answer: B

The body will contain string that represents the JSON value of an instance of the RemoteExecutionContext class.

Reference: <https://docs.microsoft.com/en-us/powerapps/developer/data-platform/use-webhooks>

---

#### QUESTION 6

You need to determine the primary cause of the issue reported by interns when they use the app. What is the primary cause?

- A. Interns have the System Customizer security role but need the Environment Maker security role.
- B. Interns have the Common Data Service User security role but need the Environment Maker security role.
- C. Interns have the Environment Maker security role but need the Common Data Service User security role.
- D. Interns have the Environment Maker security role but need the System Customizer security role.
- E. Interns have the Environment Maker security role but need the Delegate security role.

Correct Answer: D

Scenario: Interns can create apps but cannot interact with their own data.

Environment Maker role: Can create new resources associated with an environment, including apps, connections, custom APIs, gateways, and flows using Microsoft Power Automate. However, this role doesn't have any privileges to access

data within an environment.

System Customizer role: full permission to customize the environment. However, users with this role can only view records for environment entities that they create.

Reference:

<https://docs.microsoft.com/en-us/power-platform/admin/database-security>

---

#### QUESTION 7

You need to add the script for the registration form event handling. Which code segment should you use?



- A. formContext.data.entity.addOnSave(myFunction)
- B. formContext.data.addOnLoad(myFunction)
- C. formContext.data.removeOnLoad(myFunction)
- D. addOnPreProcessStatusChange
- E. formContext.data.isValid()

Correct Answer: B

Scenario: Information about upcoming tournaments must be pre-located into the registration form when the registration form loads.

addOnLoad adds event handlers to the Subgrid OnLoad event event.

Reference:

<https://docs.microsoft.com/en-us/powerapps/developer/model-driven-apps/clientapi/reference/grids/gridcontrol/addonload>

---

## QUESTION 8

You need to store designations and certifications.

What should you do?

- A. Create a new Lookup column on the Contact table.
- B. Create a new table that has an N:N relationship with the Contact table.
- C. Create a new table that has an N:1 relationship with the Contact table.
- D. Create a new Choices column on the Contact table.

Correct Answer: C

Requirements. Historical Information Tracking

You must create a process to identify individuals as a person of interest that the company should consider hiring. You must assign each individual a score based on their past interactions.

\*

Whether the individual has any of the 12 designations or certifications that the company considers significant

\*

Etc.

Each contact can have 0, 1, or many designations or certifications.

Incorrect:





\*

A Lookup column cannot store information on 12 designations or certifications

The LookUp function finds the first record in a table that satisfies a formula. Use LookUp to find a single record that matches one or more criteria.

\*

A Choices column cannot store information on 12 designations or certifications

The Choices function returns a table of the possible values for a lookup column.

Use the Choices function to provide a list of choices for your user to select from. This function is commonly used with the Combo box control in edit forms.

---

## QUESTION 9

After you answer a question in this section, you will NOT be able to return to it. As a result, these questions will not appear in the review screen.

You are developing a model-driven app for a company.

When you create a new Account record, you must automatically display a form to collect data that is needed to create a Contact record. The form must switch to the appropriate form layout based on the contact type.

You open the Contact form by using JavaScript. You pass the contact type information to the form by using the `Xrm.Navigation.openForm` function. An `OnLoad` event handler in the Contact form processes the data and shows only the

appropriate sections of the form for the given contact type.

You need to configure the receiving form to accept the data parameter.

Solution: In the form editor, add a web resource that sets `formContext.data.attributes`.

Does the solution meet the goal?

A. Yes

B. No

Correct Answer: B

By default, model-driven apps allows a specified set of query string parameters to be passed to a form. You use these parameters to set default values when you create a new record in the application. Each parameter must use a standard naming convention that includes a reference to the column logical name.

There are two ways to specify which query string parameters will be accepted by the form:

1.

Edit form properties

2.



Edit form XML

Reference: <https://docs.microsoft.com/en-us/powerapps/developer/model-driven-apps/configure-form-accept-custom-querystring-parameters>

---

### QUESTION 10

A company uses a model-driven app to record details of laboratory test.

You are asked to create a custom component that makes it easier to capture multiple values from lab test results on mobile devices.

You need to create the interface for the dataset in case the mobile devices lose connection to the network.

Which method should you use?

- A. SaveData
- B. updateView
- C. init
- D. getClient

Correct Answer: A

Use LoadData and SaveData for basic data storage while offline.

Note:

When building mobile apps, one of the most common scenarios app makers face is how to enable their users be productive in situations where there is limited or no connectivity at all. This has been one of the most requested features for

PowerApps to allow running apps while being disconnected and to provide some support for offline data caching. In this release of PowerApps, we are delivering the first set of improvements for app makers to achieve that by enabling:

Launching the PowerApps mobile player app offline  
Running apps while being offline

Determine when your app is online or offline or in a metered connection by using the Connection signal object.

Leverage existing formulas such as LoadData and SaveData for basic data storage while offline.

Reference:

<https://powerapps.microsoft.com/sv-se/blog/build-offline-apps-with-new-powerapps-capabilities/>

---

### QUESTION 11

DRAG DROP

You are developing a Power Platform app for a school. The school plans to use the app to gather information about classes and students.



You must design a plug-in for the app. You must store data about students in the Contacts table and store data about classes in a custom table.

You need to select the stage in the event pipeline for each function.

Which stages should you use? To answer, drag the appropriate plug-in stages to the correct functions. Each plug-in stage may be used once, more than once, or not at all. You may need to drag the split bar between panes or scroll to view

content.

NOTE: Each correct selection is worth one point.

Select and Place:

Plug-in stages	Answer Area	
	Function	Plug-in stage
PreValidation	Cancel a class if the student is over 15 years old.	<input type="text"/>
PreOperation	Update the record being processed by the plug-in step and rollback if an error occurs.	<input type="text"/>
PostOperation	Add a student to the appropriate class.	<input type="text"/>

Correct Answer:

Plug-in stages	Answer Area	
	Function	Plug-in stage
<input type="text"/>	Cancel a class if the student is over 15 years old.	PreValidation
<input type="text"/>	Update the record being processed by the plug-in step and rollback if an error occurs.	PreOperation
<input type="text"/>	Add a student to the appropriate class.	PostOperation

Explanation:

Box 1: PreValidation

For the initial operation, this stage will occur before the main system operation.

This provides an opportunity to include logic to cancel the operation before the database transaction.

Box 2: PreOperation

Occurs before the main system operation and within the database transaction.



If you want to change any values for an entity included in the message, you should do it here.

Avoid cancelling an operation here. Canceling will trigger a rollback of the transaction and have significant performance impact.

Box 3: PostOperation

Occurs after the main system operation and within the database transaction.

Use this stage to modify any properties of the message before it is returned to the caller.

Reference:

<https://docs.microsoft.com/en-us/powerapps/developer/data-platform/event-framework>

---

## QUESTION 12

An organization implements Dynamics 365 Sales.

You need to trigger a business rule when the main form is saved.

What should you do?

- A. Write a business rule to trigger on a change of ModifiedOn field.
- B. Set the scope of the business rule to one specific form where business rule triggers.
- C. Set the scope of the business rule to All Forms.
- D. Set the scope of the business rule to Entity.

Correct Answer: D

Set scope of business rule to "Entity" instead of "All Form". This will trigger it on server side.

Reference: [https://docs.microsoft.com/en-us/previous-versions/dynamicscrm-2016/developers-guide/dn481574\(v=crm.8\)](https://docs.microsoft.com/en-us/previous-versions/dynamicscrm-2016/developers-guide/dn481574(v=crm.8))

---

## QUESTION 13

HOTSPOT

You need to select visualization components.

What should you use? To answer, select the appropriate options from the answer area.

NOTE: Each correct selection is worth one point.

Hot Area:



## Answer Area

Requirement	Component										
Mailing list opt-in/opt-out	<table border="1"><tr><td></td><td>▼</td></tr><tr><td colspan="2">Flip switch</td></tr><tr><td colspan="2">Linear gauge</td></tr><tr><td colspan="2">Radial knob</td></tr><tr><td colspan="2">Linear slider</td></tr></table>		▼	Flip switch		Linear gauge		Radial knob		Linear slider	
	▼										
Flip switch											
Linear gauge											
Radial knob											
Linear slider											
Number of store visits	<table border="1"><tr><td></td><td>▼</td></tr><tr><td colspan="2">Linear gauge</td></tr><tr><td colspan="2">Flip switch</td></tr><tr><td colspan="2">Pen control</td></tr><tr><td colspan="2">Input mask</td></tr></table>		▼	Linear gauge		Flip switch		Pen control		Input mask	
	▼										
Linear gauge											
Flip switch											
Pen control											
Input mask											
Purpose of visit	<table border="1"><tr><td></td><td>▼</td></tr><tr><td colspan="2">Linear gauge</td></tr><tr><td colspan="2">Flip switch</td></tr><tr><td colspan="2">Radial knob</td></tr><tr><td colspan="2">Option set</td></tr></table>		▼	Linear gauge		Flip switch		Radial knob		Option set	
	▼										
Linear gauge											
Flip switch											
Radial knob											
Option set											

Correct Answer:



## Answer Area

Requirement	Component
Mailing list opt-in/opt-out	<div style="border: 1px solid gray; padding: 2px;"> <div style="background-color: #ccc; height: 20px; display: flex; justify-content: flex-end; align-items: center; padding-right: 5px;">▼</div> <div style="background-color: #d9ead3; padding: 2px;">Flip switch</div> <div style="padding: 2px;">Linear gauge</div> <div style="padding: 2px;">Radial knob</div> <div style="padding: 2px;">Linear slider</div> </div>
Number of store visits	<div style="border: 1px solid gray; padding: 2px;"> <div style="background-color: #ccc; height: 20px; display: flex; justify-content: flex-end; align-items: center; padding-right: 5px;">▼</div> <div style="background-color: #d9ead3; padding: 2px;">Linear gauge</div> <div style="padding: 2px;">Flip switch</div> <div style="padding: 2px;">Pen control</div> <div style="padding: 2px;">Input mask</div> </div>
Purpose of visit	<div style="border: 1px solid gray; padding: 2px;"> <div style="background-color: #ccc; height: 20px; display: flex; justify-content: flex-end; align-items: center; padding-right: 5px;">▼</div> <div style="padding: 2px;">Linear gauge</div> <div style="padding: 2px;">Flip switch</div> <div style="padding: 2px;">Radial knob</div> <div style="background-color: #d9ead3; padding: 2px;">Option set</div> </div>

Scenario: Customer satisfaction surveys are recorded with Microsoft Forms Pro.

Box 1: Flip switch

The flip switch is like an on/off switch, providing a choice between two values.

Box 2: Linear gauge

The linear gauge lets your users input numerical values by dragging a slider instead of typing in the exact quantity. The slider provides whole number input and display only. Use this control for any numerical and money columns.

Box 3: Option set

The choice control presents a set of options for your users to choose from when entering data.

You can customize forms (main, quick create, and quick view) and email templates by adding multi-select columns that are called Choices. When you add a choices column, you can specify multiple values that will be available for users to select. When users fill out the form they can select one, multiple, or all the values displayed in a drop-down list.

Reference:

<https://docs.microsoft.com/en-us/powerapps/maker/model-driven-apps/additional-controls-for-dynamics-365-for-phones-and-tablets>



#### QUESTION 14

A company plans to create an order processing app. When orders are created, the app will perform complex business logic and integrate with several external systems.

Orders that have a large number of line items may take up to six minutes to complete. Processing for each order must be completed in one operation to avoid leaving records in an incomplete state.

You need to recommend a solution for the company.

What should you recommend?

- A. an asynchronous workflow that uses a custom workflow activity
- B. a real-time workflow that uses a custom action
- C. a webhook that connects to an Azure Function
- D. an asynchronous plug-in

Correct Answer: B

Real-time Workflows roll back all changes if it fails. As the Workflow is going through the process itself, if it fails, it will roll back all of the prior steps taken.

Reference: <https://ledgeviewpartners.com/blog/what-are-the-differences-between-real-time-and-background-workflows-in-microsoft-dynamics-365-crm/>

---

#### QUESTION 15

You are developing a model-driven app for a company.

The app must map child records to a parent record.

You need to use the column mapping feature to configure the app.

Which two actions can you perform? Each correct answer presents a complete solution.

NOTE: Each correct selection is worth one point.

- A. Map the value of a Choices column on the child table to the value of a Choices column on the parent table.
- B. Map the value of a column on the parent table that uses column values from the child table.
- C. Map the value of columns on both the child table quick-create and main forms to the value for the same columns on the parent table.
- D. Map the value of a single line of text column on the child table to the value of a currency column on the parent record.

Correct Answer: AC

Incorrect:



Not B: It is the opposite. The child table uses column values from the parent table.

Not D: The data types need to match. Both columns must be of the same type and the same format.

Reference: <https://docs.microsoft.com/en-us/power-apps/maker/data-platform/map-entity-fields>

[PL-400 VCE Dumps](#)

[PL-400 Exam Questions](#)

[PL-400 Braindumps](#)