



PL-300^{Q&As}

Microsoft Power BI Data Analyst

Pass Microsoft PL-300 Exam with 100% Guarantee

Free Download Real Questions & Answers **PDF** and **VCE** file from:

<https://www.passapply.com/pl-300.html>

100% Passing Guarantee
100% Money Back Assurance

Following Questions and Answers are all new published by Microsoft
Official Exam Center

-  **Instant Download** After Purchase
-  **100% Money Back** Guarantee
-  **365 Days** Free Update
-  **800,000+** Satisfied Customers





QUESTION 1

HOTSPOT

You are profiling data by using Power Query Editor.

You have a table that contains a column named column1. Column statistics and Value distribution for column1 are shown in the following exhibit.

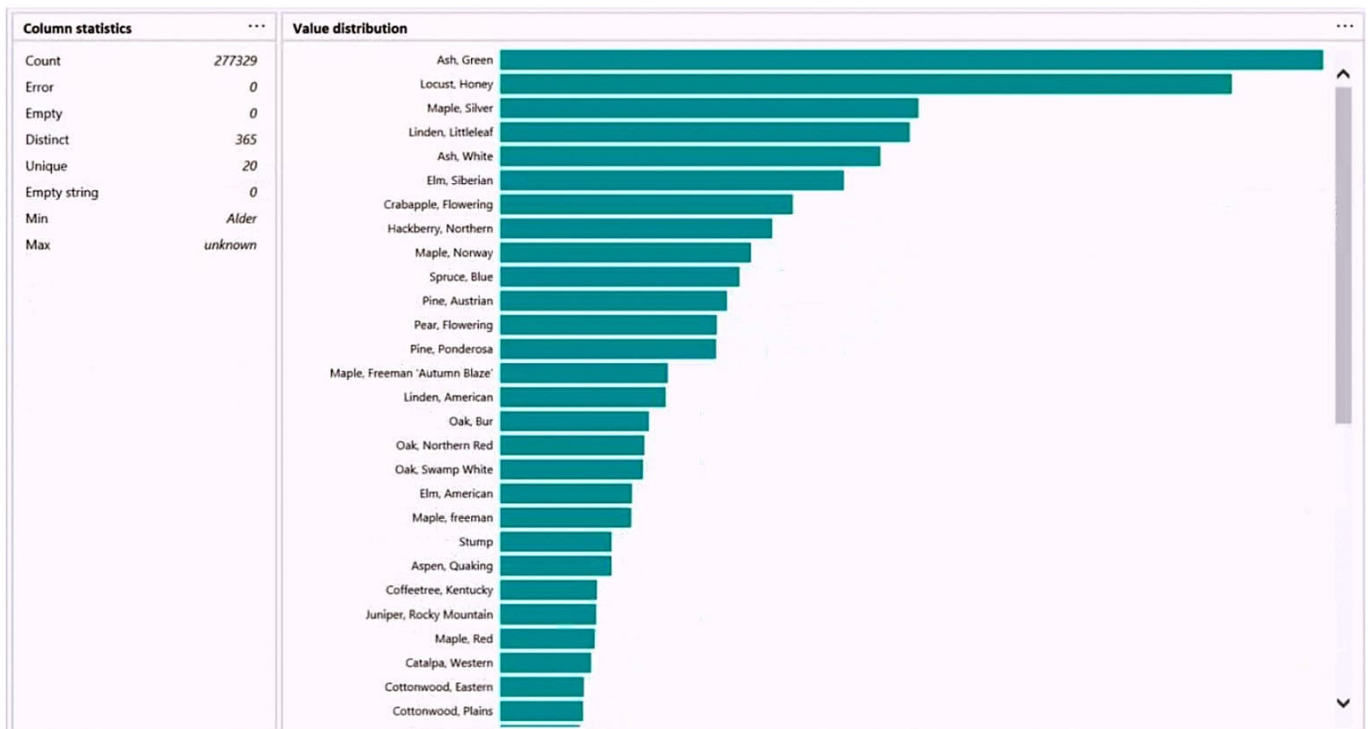
“and that return data from

?

“for example, DAX queries

?

DirectQuery: Tables with this setting aren't cached. Queries that you submit to the Power BI dataset



Use the drop-down menus to select the answer choice that completes each statement based on the information presented in the graphic. NOTE: Each correct selection is worth one point.

Hot Area:



Answer Area

There [answer choice] only once.

are 20 values that occur
are 365 values that occur
are 277,329 values that occur
is one value that occurs

The Pear, Flowering species is found more often in column1 than the [answer choice] species.

Ash, Green
Crabapple, Flowering
Elm, American
Spruce, Blue

Correct Answer:

Answer Area

There [answer choice] only once.

are 20 values that occur
are 365 values that occur
are 277,329 values that occur
is one value that occurs

The Pear, Flowering species is found more often in column1 than the [answer choice] species.

Ash, Green
Crabapple, Flowering
Elm, American
Spruce, Blue

Box 1: are 20 values that occur There are 20 unique values.

Box 2: Elm, American Elm, American is below Pear, flowering species in the graphic.

QUESTION 2

Note: This question is part of a series of questions that present the same scenario. Each question in the series contains a unique solution that might meet the stated goals. Some question sets might have more than one correct solution, while

others might not have a correct solution.



After you answer a question in this scenario, you will NOT be able to return to it. As a result, these questions will not appear in the review screen.

You have several reports and dashboards in a workspace.

You need to grant all organizational users read access to a dashboard and several reports.

Solution: You publish an app to the entire organization.

Does this meet the goal?

A. Yes

B. No

Correct Answer: A

<https://docs.microsoft.com/es-es/power-bi/collaborate-share/service-create-distribute-apps>

QUESTION 3

Note: This question is part of a series of questions that present the same scenario. Each question in the series contains a unique solution that might meet the stated goals. Some question sets might have more than one correct solution, while

others might not have a correct solution.

After you answer a question in this scenario, you will NOT be able to return to it. As a result, these questions will not appear in the review screen.

You have several reports and dashboards in a workspace.

You need to grant all organizational users read access to a dashboard and several reports.

Solution: You assign all the users the Viewer role to the workspace.

Does this meet the goal?

A. Yes

B. No

Correct Answer: B

"You have five reports and two dashboards in a workspace. You need to grant all organizational users read access to one dashboard and three reports"

QUESTION 4

DRAG DROP

You are modeling data in a table named SalesDetail by using Microsoft Power BI.



You need to provide end users with access to the summary statistics about the SalesDetail data. The users require insights on the completeness of the data and the value distributions.

Which three actions should you perform in sequence? To answer, move the appropriate actions from the list of actions to the answer area and arrange them in the correct order.

Select and Place:

Actions

Create a blank query as a data source.

Create a parameter that uses a query for the suggested values.

Specify the following query, then close and apply.
`-Table.Distinct(# "SalesDetail")`

Create a visual on a report page using fields from the new table.

Create a query that uses Common Data Service as a data source.

Specify the following query, then close and apply.
`-Table.Profile(# "SalesDetail")`

Answer Area



Correct Answer:

Actions

Create a parameter that uses a query for the suggested values.

Specify the following query, then close and apply.
`-Table.Distinct(# "SalesDetail")`

Create a query that uses Common Data Service as a data source.

Answer Area

Create a blank query as a data source.

Specify the following query, then close and apply.
`-Table.Profile(# "SalesDetail")`

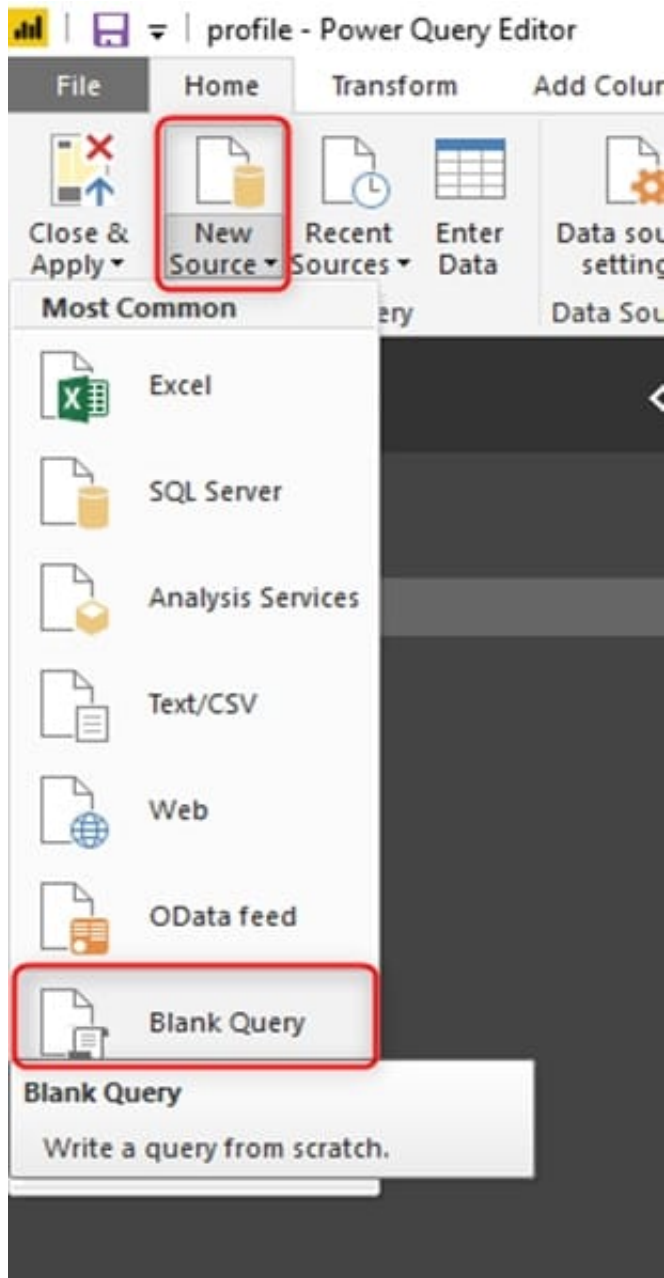
Create a visual on a report page using fields from the new table.





Step 1: Create a blank query as a data source

Start with a New Source in Power Query Editor, and then Blank Query.



Create a parameter that use a query for suggested values.

Step 2: Specify the following query, then close and apply. -Table.Profile("#SalesDetail")

In the new blank query, in the formula bar (if you don't see the formula bar, check the formula bar option in the View tab of the Power Query Editor), type below expression:

```
=Table.Profile()
```

Note that this code is not complete yet, we need to provide a table as the input of this function.

Note: The Table.Profile() function takes a value of type table and returns a table that displays, for each column in the



original table, the minimum, maximum, average, standard deviation, count of values, count of null values and count of distinct values.

Step 3: Create a visual for the query table.

The profiling data that you get from Table.Profile function is like below;

Column	Min	Max	Average	StandardDeviation	Count	NullCount	DistinctCount
ArabicDescription		null	null	null	606	210	null
ChineseDescription		null	null	null	606	210	null
Class	H	M		null	606	276	4
Color	Black	Yellow		null	606	0	20
DaysToManufacture	0	4	1.201520132	1.56889186	606	0	4
DealerPrice		null	null	null	606	211	null
EndDate		null	null	null	606	406	null
EnglishDescription		null	null	null	606	210	null
EnglishProductName	AIRC Logo Cap	Women's Tights, S		null	606	0	504
FinishedGoodsFlag	FALSE	TRUE		null	606	0	2
FrenchDescription		null	null	null	606	210	null
FrenchProductName		vélo de route 750 noir, 58		null	606	0	238
GermanDescription		null	null	null	606	210	null
HebrewDescription		null	null	null	606	210	null
JapaneseDescription		null	null	null	606	210	null
ListPrice		null	null	null	606	211	null
ModelName		null	null	null	606	209	null
ProductAlternateKey	AR-5381	WB-H08		null	606	0	504
ProductKey	2	606	303.1	175.0814066	606	0	606
ProductLine		null	null	null	606	220	null
ProductSubcategoryKey		null	null	null	606	209	null
ReorderPoint	3	750	372.4009901	278.0059357	606	0	6
SafetyStockLevel	4	1000	495.3013201	364.0071143	606	0	6
Size		null	null	null	606	307	null
SizeRange	38-40 CM	XL		null	606	0	11
SizeUnitMeasureCode		null	null	null	606	353	null
SpanishProductName		Soporte multibuso para bicicletas		null	606	0	238
StandardCost		null	null	null	606	211	null
StartDate	1/06/2008 12:00:00 AM	1/07/2007 12:00:00 AM	20/11/2002 5:49:38 AM		606	0	4
Status	Current	Current		null	606	200	2
Style		null	null	null	606	305	null
TaiDescription		null	null	null	606	210	null
TurkishDescription		null	null	null	606	210	null
Weight	2	1000	56.11702128	158.0240589	606	324	43
WeightUnitMeasureCode	G	LB		null	606	324	3

After loading the data into Power BI, you'll have the table with all columns, and it can be used in any visuals.

Reference: <https://radacad.com/create-a-profiling-report-in-power-bi-give-the-end-user-information-about-the-data>

QUESTION 5

You are creating a Power BI report by using Power Bi Desktop. You need to include a visual that shows trends and other useful information automatically. The visual must update based on selections in other visuals. Which type of visual should you use?

- A. key influencers
- B. decomposition tree
- C. QandA
- D. smart narrative

Correct Answer: A



QUESTION 6

Note: This question is a part of a series of questions that present the same scenario. For your convenience, the scenario is repeated in each question. Each question presents a different goal and answer choices, but the text of the scenario is

exactly the same in each question in this series.

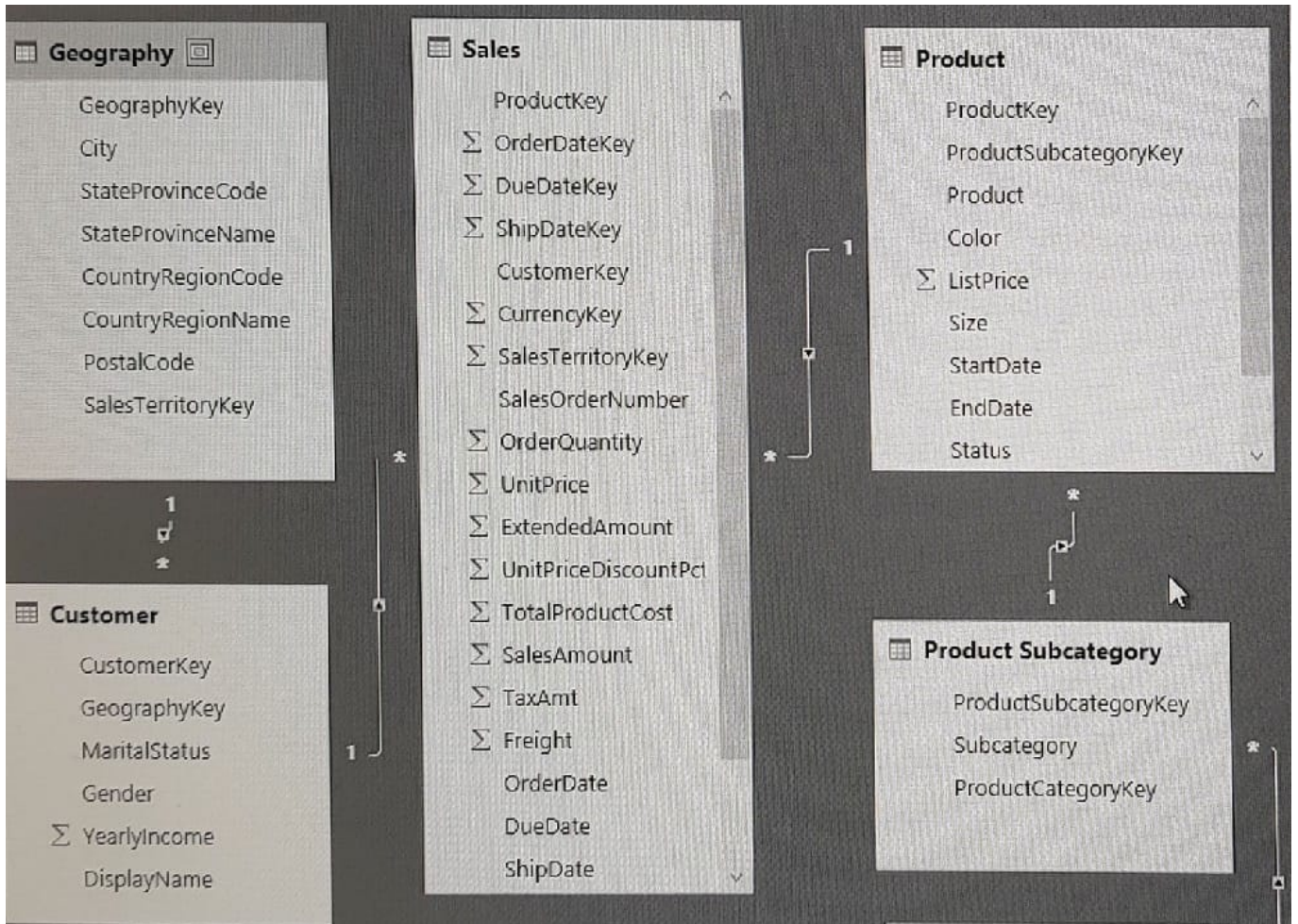
Start of repeated scenario

You have a Microsoft SQL Server database that has the tables shown in the Database Diagram exhibit. (Click the Exhibit.)

Database Diagram



You plan to develop a Power BI model as shown in the Power BI Model exhibit. (Click the Exhibit).



You plan to use Power BI to import data from 2013 to 2015.

Product Subcategory [Subcategory] contains NULL values.

End of repeated scenario.

You implement the Power BI model.

You need to add a measure to rank total sales by product. The results must appear as shown in the following table.

Rank	Product	SalesAmount
1	Product3	13,000
1	Product2	13,000
2	Product1	12,000
3	Product5	10,000
3	Product4	10,000

Which DAX formula should you use?

A. Product Ranking= RANKX (Product, [SalesAmount], , DESC, Skip)



B. Product Ranking= RANKX (ALL, (' Product\'), [SalesAmount], , DESC, Dense)

C. Product Ranking= RANKX (ALL, (' Product\'), [SalesAmount], , DESC, Skip)

D. Product Ranking= RANKX (ALL (' Product\'), [SalesAmount], , Asc, Dense)

Correct Answer: B

References: <https://msdn.microsoft.com/en-us/library/gg492185.aspx>

QUESTION 7

You publish a Microsoft Power BI dataset to powerbi.com. The dataset appends data from an on-premises Oracle database and an Azure SQL database by using one query.

You have admin access to the workspace and permission to use an existing On-premises data gateway for which the Oracle data source is already configured.

You need to ensure that the data is updated every morning. The solution must minimize configuration effort.

Which two actions should you perform when you configure scheduled refresh? Each correct answer presents part of the solution.

NOTE: Each correct selection is worth one point.

A. Configure the dataset to use the existing On-premises data gateway.

B. Deploy an On-premises data gateway in personal mode.

C. Set the refresh frequency to Daily.

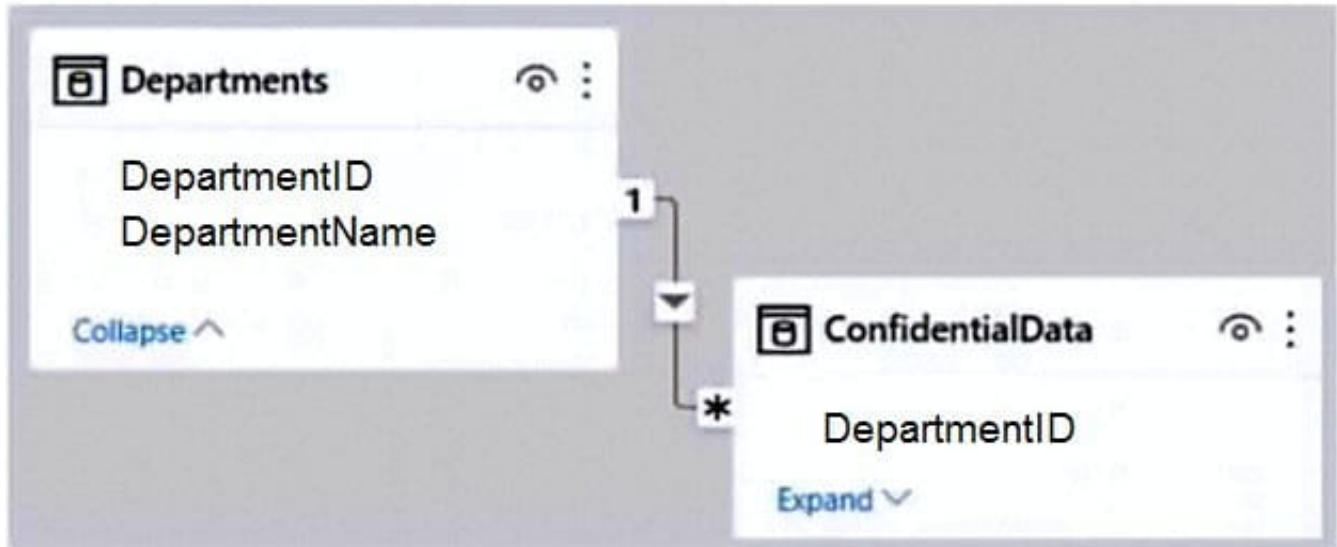
D. Configure the dataset to use the personal gateway.

Correct Answer: AC

<https://docs.microsoft.com/en-us/power-bi/connect-data/service-gateway-personal-mode>

QUESTION 8

You have the Power BI model shown in the following exhibit.



There are four departments in the Departments table.

You need to ensure that users can see the data of their respective department only.

What should you do?

- A. Create a row-level security (RLS) role for each department, and then define the membership of the role.
- B. Create a DepartmentID parameter to filter the Departments table.
- C. To the ConfidentialData table, add a calculated measure that uses the currentgroup DAX function.
- D. Create a slicer that filters Departments based on DepartmentID.

Correct Answer: A

QUESTION 9

You have sales data in a star schema that contains four tables named Sales, Customer, Date, and Product. The Sales table contains purchase and ship dates.

Most often, you will use the purchase date to analyze the data, but you will analyze the data by both dates independently and together.

You need to design an imported dataset to support the analysis. The solution must minimize the model size and the number of queries against the data source.

Which data modeling design should you use?

- A. Use the Auto Date/Time functionality in Microsoft Power BI and do NOT import the Date table.
- B. Duplicate the Date query in Power Query and create active relationships between Sales and both Date tables in the modeling view.



C. On the Date table, use a reference query in Power Query and create active relationships between Sales and both Date tables in the modeling view.

D. Import the Date table twice in Power Query and create active relationships between Sales and both Date tables in the modeling view.

Correct Answer: D

Microsoft recommends defining active relationships whenever possible. They widen the scope and potential of how your model can be used by report authors, and users working with QandA.

Refactoring methodology (example): Here's a methodology to refactor a model from a single role-playing dimension-type table, to a design with one table per role.

Remove any inactive relationships.

Consider renaming the role-playing dimension-type table to better describe its role. In the example, the Airport table is related to the ArrivalAirport column of the Flight table, so it's renamed as Arrival Airport. Create a copy of the role-playing

table, providing it with a name that reflects its role. If it's an Import table, we recommend defining a calculated table. If it's a DirectQuery table, you can duplicate the Power Query query.

Only one relationship can be active.

Note: If you query two or more tables at the same time, when the data is loaded, Power BI Desktop attempts to find and create relationships for you. The relationship options Cardinality, Cross filter direction, and Make this relationship active are automatically set.

Reference:

<https://docs.microsoft.com/en-us/power-bi/transform-model/desktop-create-and-manage-relationships>

<https://docs.microsoft.com/en-us/power-bi/guidance/relationships-active-inactive>

QUESTION 10

You manage a Power BI model has a table named Sales and product.

You need to ensure that a sales team can view only data that has a CountryRegionName value of United States and a ProductCategory value of Clothing.

What should you do from Power BI Desktop?

A. From Power BI Desktop, create a new role that has the following filter.[countryRegionName]= "United States" andand [ProductCategory]= "Clothing"

B. Add the following filters in Query Editor.CountryRegionName is United StatesProductCategory is Clothing

C. From Power BI Desktop, create a new role that has the following filters.[CountryRegionName]= "United States"

D. Add the following filters to a report.CountryRegionName is United SatesProductCategory is Clothing

Correct Answer: D



References: <https://docs.microsoft.com/en-us/power-bi/power-bi-how-to-report-filter>

QUESTION 11

You need to create the required relationship for the executive's visual. What should you do before you can create the relationship?

- A. Change the data type of Sales[region_id] to Whole Number.
- B. In the Sales table, add a measure for sum(sales_amount).
- C. Change the data type of sales[sales_id] to Text.
- D. Change the data type of sales [region_id] to Decimal Number.

Correct Answer: A

Scenario: Executives require a visual that shows sales by region.

Need to change the sales_id column from Varchar to Whole Number (Integer).

QUESTION 12

DRAG DROP

You receive annual sales data that must be included in Power BI reports.

From Power Query Editor, you connect to the Microsoft Excel source shown in the following exhibit.

	Month	MonthNumber	2019	2020	2021
1	Jan	1	345	5526	3456
2	Feb	2	758	773	0
3	Mar	3	37763	570	null
4	Apr	4	8364	9417	null
5	May	5	58256	276	null
6	June	6	6722	235	null
7	July	7	55225	6297	null
8	Aug	8	673	63	null
9	Sep	9	552	357	null
10	Oct	10	7838	24214	null
11	Nov	11	83544	257	null
12	Dec	12	32455	389	null

You need to create a report that meets the requirements:

1. Visualizes the Sales value over a period of years and months
- 2.



Adds a Slicer for the month

3.

Adds a Slicer for the year

Which three actions should you perform in sequence? To answer, move the appropriate actions from the list of actions to the answer area and arrange them in the correct order.

Select and Place:

Actions

- Select the Month and MonthNumber columns.
- Select **Unpivot other columns**.
- Rename the Attribute column as Year and the Value column as Sales.
- Select the 2019, 2020, and 2021 columns.
- Select **Transpose**.

Answer Area

1

2

3

>

<

^

v

Correct Answer:

Actions

-
-
-
- Select the 2019, 2020, and 2021 columns.
- Select **Transpose**.

Answer Area

1

2

3

>

<

Select the Month and MonthNumber columns.

Select **Unpivot other columns**.

Rename the Attribute column as Year and the Value column as Sales.

^

v



QUESTION 13

You maintain a Power BI workspace that contains a supplier quality dashboard. The dashboard contains 10 card visuals, two map visuals and five bar chart visuals.

The dashboard mobile layout is shown in the exhibit. (Click the Exhibit tab.)

You need to modify the dashboard mobile layout to meet the following requirements:

1.
Only show single-value visuals.
2.
Minimize scrolling. What should you do?
 - A. Remove the card visual, increase the size of the map and bar chart visuals
 - B. Decrease the size of the map and bar chart visuals Move all the card visuals to the top of the layout.
 - C. Move the bar chart visuals to the top of the layout Remove the map visuals. Decrease the size of the card visuals.
 - D. Decrease the size of the card visuals. Remove the map and bar chart visuals.

Correct Answer: D

QUESTION 14

Note: This question is part of a series of questions that present the same scenario. Each question in the series contains a unique solution that might meet the stated goals. Some question sets might have more than one correct solution, while

others might not have a correct solution.

After you answer a question in this section, you will NOT be able to return to it. As a result, these questions will not appear in the review screen.

You are modeling data by using Microsoft Power BI. Part of the data model is a large Microsoft SQL Server table named Order that has more than 100 million records.

During the development process, you need to import a sample of the data from the Order table.

Solution: You add a WHERE clause to the SQL statement.

Does this meet the goal?

- A. Yes
- B. No



Correct Answer: A

QUESTION 15

You have a Power BI report that uses a dataset based on an Azure Analysis Services live connection.

You need to ensure that users can use QandA from the Power BI service for the dataset.

What should you do?

- A. From the Power BI service, add an enterprise gateway to the dataset.
- B. From Power BI Desktop, add synonyms and suggested questions.
- C. From Power BI Desktop, add a QandA visual to the report.
- D. From the Power Bi service, select Turn on Qand A for this dataset.

Correct Answer: D

[PL-300 VCE Dumps](#)

[PL-300 Study Guide](#)

[PL-300 Exam Questions](#)