



VCE & PDF

PassApply.com

https://www.passapply.com/pegapcrsa80v1_2019.html

2024 Latest passapply PEGAPCRSA80V1_2019 PDF and VCE dumps
Download

PEGAPCRSA80V1_2019^{Q&As}

Pega Certified Robotics System Architect 80V1 2019

Pass Pegasystems PEGAPCRSA80V1_2019 Exam with 100% Guarantee

Free Download Real Questions & Answers **PDF** and **VCE** file from:

https://www.passapply.com/pegapcrsa80v1_2019.html

100% Passing Guarantee
100% Money Back Assurance

Following Questions and Answers are all new published by
Pegasystems Official Exam Center

-  **Instant Download** After Purchase
-  **100% Money Back** Guarantee
-  **365 Days** Free Update
-  **800,000+** Satisfied Customers





QUESTION 1

Which project property setting do you set to true to automatically increase the deployment version?

- A. Increase Deployment Version
- B. Increment Deployment Version
- C. Update Run Settings
- D. Increase Assemblies

Correct Answer: B

Reference: http://help.openspan.com/80/Project_Items/Project_Properties.htm

QUESTION 2

A developer adds a diagnostic log component to an automation and checks the log file.

```
Info | 02:28:36.568 | EM | 25 | MTA | Playback | | CRM_E_CRMChild_Created-64125524 | Link*sessionId=0c00d382-ba28-4400-
Info | 02:28:36.569 | EM | 25 | MTA | Automation | CRM_E_CRMChild_Created | CRMAdapterPrj | Automation: CRM_E_CRMChild_Created
Info | 02:28:36.571 | EM | 25 | MTA | Automation | | | | Creating_Script_Component - CompID
Warning | 02:28:36.572 | EM | 25 | MTA | Automation | | | | *****Starting Interaction*****
Info | 02:28:36.573 | EM | 25 | MTA | Playback | CRM_E_CRMChild_Created-64125524 | Link*sessionId=0c00d382-ba28-4400-
Info | 02:28:36.574 | EM | 25 | MTA | Automation | CRM_E_CRMChild_Created | CRMAdapterPrj | Automation: CRM_E_CRMChild_Created
Warning | 02:28:36.576 | EM | 25 | MTA | ExecutionTracker | | | | ExecutionTracker_EnterWait(1) - Dash
```

Based on the image, how did the developer configure the diagnostic log component settings?



A.

<input type="checkbox"/> Design	
(Name)	diagnosticsLog1
FullName on ACME_P_Sign	ACME_P_SignIn.diagnosticsLog1
Uniqueid on ACME_P_SignI	Automator-8D51549BCC7F4EE\Di
<input type="checkbox"/> Diagnostics	
Category	Automation
Mode	On
Type	Info

B.

<input type="checkbox"/> Design	
(Name)	diagnosticsLog1
FullName on CRM_E_CRMC	CRM_E_CRMChild_Created.diagn
UniqueID on CRM_E_CRMC	Automator-8D5156BC78BC6B9\D
<input type="checkbox"/> Diagnostics	
Category	Automation
Mode	On
Type	Warning

C.

<input type="checkbox"/> Design	
(Name)	diagnosticsLog1
FullName on ACME_P_Sign	ACME_P_SignIn.diagnosticsLog1
Uniqueid on ACME_P_SignI	Automator-8D51549BCC7F4EE\Di
<input type="checkbox"/> Diagnostics	
Category	*****Starting Interaction*****
Mode	On
Type	Warning

D.

<input type="checkbox"/> Design	
(Name)	diagnosticsLog1
FullName on CRM_E_CRMC	CRM_E_CRMChild_Created.diagn
UniqueID on CRM_E_CRMC	Automator-8D5156BC78BC6B9\D
<input type="checkbox"/> Diagnostics	
Category	Automation
Mode	Off
Type	Warning



- A. Option A
- B. Option B
- C. Option C
- D. Option D

Correct Answer: B

QUESTION 3

An automation requires the web adapter to attach to a running instance of Internet Explorer. How do you achieve this requirement?

- A. Configure the Universal Web adapter and set the StartMethod property to MonitorAll.
- B. Configure the web adapter and set the StartMethod property to MonitorAll.
- C. Configure the web adapter and set the StartMehod property to Attach.
- D. The web adapter cannot connect to a running instance.

Correct Answer: B

Reference: <https://community1.pega.com/community/product-support/question/robotics-web-adapter-how-attach-web-adapter-existing-website>

QUESTION 4

HOTSPOT

Pega Robot Studio provides five rules on how to differentiate between cloneable application objects when using key assignments in automations. The first rule states that an event creates the instance to set the context of a cloneable object. The remaining four rules state the requirements for a key assignment.

In the Answer Area, determine if each rule description requires a key assignment.

Hot Area:



Answer Area

Rule Description

Key Assignment Required?

An event from Child Context to Parent Context

Requires a key assignment
Does not require a key assignment

An event from Parent Context to Child Context

Requires a key assignment
Does not require a key assignment

Logic within the same context

Requires a key assignment
Does not require a key assignment

An event from No Context to a Context

Requires a key assignment
Does not require a key assignment

Correct Answer:

Answer Area

Rule Description

Key Assignment Required?

An event from Child Context to Parent Context

Requires a key assignment
Does not require a key assignment

An event from Parent Context to Child Context

Requires a key assignment
Does not require a key assignment

Logic within the same context

Requires a key assignment
Does not require a key assignment

An event from No Context to a Context

Requires a key assignment
Does not require a key assignment

QUESTION 5

The Automation Playback window allows you to _____.

- A. open a log file and step through it as if you were running your solution in debug mode
- B. replay your last Runtime session where the applications are provided with the same account numbers automatically
- C. open a log file and debug any exceptions
- D. rerun the last automation that ran with the same values as inputs automatically entered



Correct Answer: B

QUESTION 6

DRAG DROP

In the Answer Area, drag each use case on the left to the correct Toolbox item.

Select and Place:

Answer Area	Use Case	Toolbox item
Used to add custom log entries to the RuntimeLog.txt file and the Output window.		DiagnosticLog
Used to allow two concurrent threads to communicate and to synchronize events.		LogController
Holds a value which may be increased or decreased by calling a method.		Counter
Used to enable or disable diagnostic logging to the RuntimeLog.txt file.		Signal
Used to permit conditional execution based on the value of a variable.		Switch

Correct Answer:



Answer Area

<u>Use Case</u>	<u>Toolbox item</u>
Used to add custom log entries to the RuntimeLog.txt file and the Output window.	DiagnosticLog
Used to allow two concurrent threads to communicate and to synchronize events.	LogController
Holds a value which may be increased or decreased by calling a method.	Counter
Used to permit conditional execution based on the value of a variable.	Signal
Used to enable or disable diagnostic logging to the RuntimeLog.txt file.	Switch

QUESTION 7

A project requirement is to run the solution in multiple environments: Development and Production. Which two items can be added to the two Project Configuration files? (Choose two.)

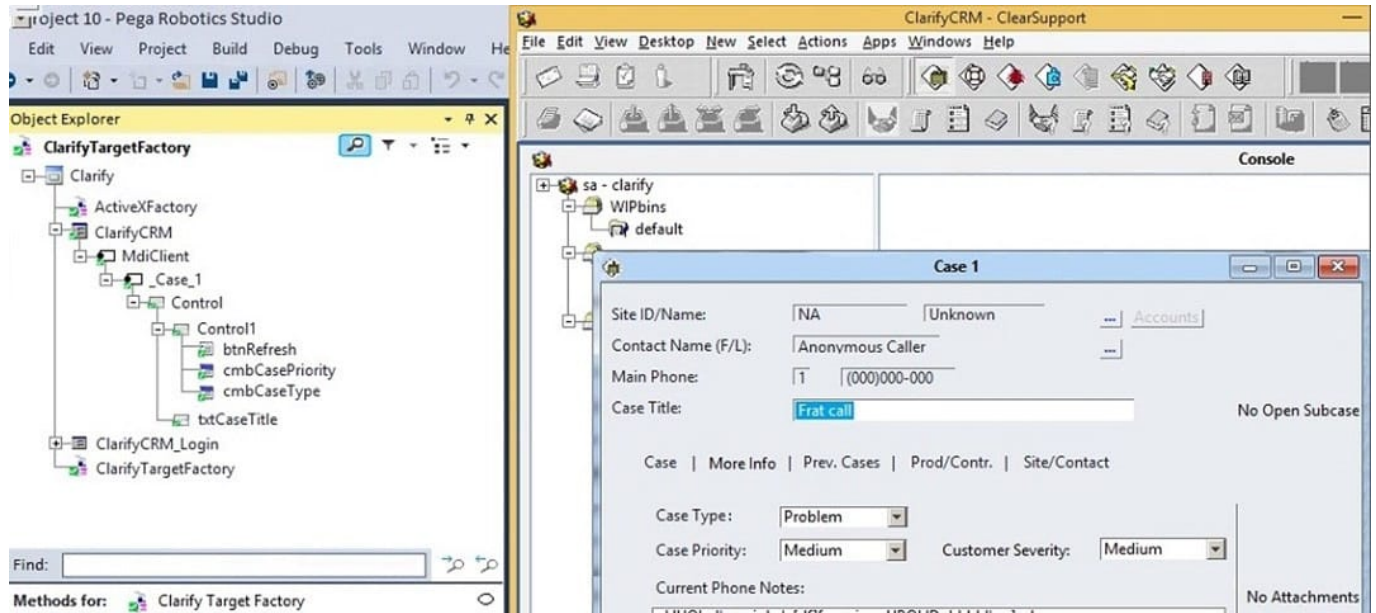
- A. Variable values
- B. Citrix Context properties
- C. Adapter Text MatchRules
- D. Project properties

Correct Answer: AD

QUESTION 8

During application discovery of a Clarify application, you determine that the user accesses more than one customer case concurrently within the application, which creates multiple windows of the same type. This requires you to enable the UseKeys property on an application's object.

Based on the image that shows the application and the matched controls in the Object Explorer, which control's UseKeys property must be set to True?



- A. ClarifyCRM
- B. MdiClient
- C. _Case_1
- D. Control

Correct Answer: A

Reference: <https://community.pega.com/knowledgebase/articles/how-do-i-use-keys-navigate-between-multiple-instances-object>

QUESTION 9

You have extracted a proxy for a data set and are using it to pass the data into a procedure automation input parameter. In the procedure automation, the data link from the input parameter is not connecting to the stringValue on a stringUtils method.

What two troubleshooting steps do you perform to correct the issue? (Choose two.)

- A. Confirm the proxy data in a messageDialog.
- B. Confirm the stringUtils method works.
- C. Confirm the data type on the procedure automation input parameter.
- D. Confirm the proxy's data type matches with the stringUtils method.

Correct Answer: AC

QUESTION 10



You are debugging a project with several automations. You are particular about one specific value in a procedure automation and want to monitor the value while debugging. Which debugging window do you use during the debugging process?

- A. Locals
- B. Automation Watches
- C. Breakpoints
- D. Threads

Correct Answer: D

[Latest PEGAPCRSA80V1_2019 Dumps](#)

[PEGAPCRSA80V1_2019 Exam Questions](#)

[PEGAPCRSA80V1_2019 Braindumps](#)