



# OMG-OCUP2-INT200<sup>Q&As</sup>

OMG Certified UML Professional (OCUP 2) - Intermediate Level

**Pass OMG OMG-OCUP2-INT200 Exam with 100% Guarantee**

Free Download Real Questions & Answers **PDF** and **VCE** file from:

<https://www.passapply.com/omg-ocup2-int200.html>

100% Passing Guarantee  
100% Money Back Assurance

Following Questions and Answers are all new published by OMG  
Official Exam Center

-  **Instant Download** After Purchase
-  **100% Money Back** Guarantee
-  **365 Days** Free Update
-  **800,000+** Satisfied Customers





#### QUESTION 1

What determines whether a loop continues execution?

- A. behaviors
- B. test nodes
- C. guards
- D. partitions
- E. clauses

Correct Answer: B

---

#### QUESTION 2

What is NOT true about a roles and role bindings?

- A. A role binding is an association.
- B. A role binding maps a connectable element to a role in a collaboration occurrence.
- C. The same object may play roles in multiple collaborations.
- D. A role types by an interface specifies a set of features required by a participant in a collaboration.
- E. The same connectable element may be bound to multiple roles in a single collaboration occurrence.

Correct Answer: A

---

#### QUESTION 3

What situation results from performing a Create Object Action on an abstract class?

- A. undefined behavior
- B. arbitrary object of one of its subclasses being created
- C. exception being raised
- D. error log entry created
- E. object of the specified class being created

Correct Answer: A

---

#### QUESTION 4



What action would destroy all association links for an object in one operation?

- A. Clear Structural Feature Action
- B. Destroy Object Action
- C. Clear Association Action
- D. Remove Structural Feature Action
- E. Destroy Link Action

Correct Answer: C

---

#### QUESTION 5

What is true for part decomposition in interaction diagrams?

- A. cannot be reused as decomposition from another lifeline
- B. must match the constructs of the decomposed lifeline
- C. must always be owned by the same interaction as the decomposed lifeline
- D. always refers to methods of the decomposed lifeline

Correct Answer: B

---

#### QUESTION 6

In a state machine, what is true for a "do activity of a state"?

- A. starts executing when the state is entered
- B. specifies a condition that must always be true when the state is active
- C. can only appear in a composite state
- D. executes repeatedly as long as the state is active
- E. is equivalent to an entry action of a state

Correct Answer: A

---

#### QUESTION 7

A component may legally participate in which relationship(s)?

- A. associations and generalizations
- B. dependencies, associations, and generalizations
- C. dependencies and generalizations

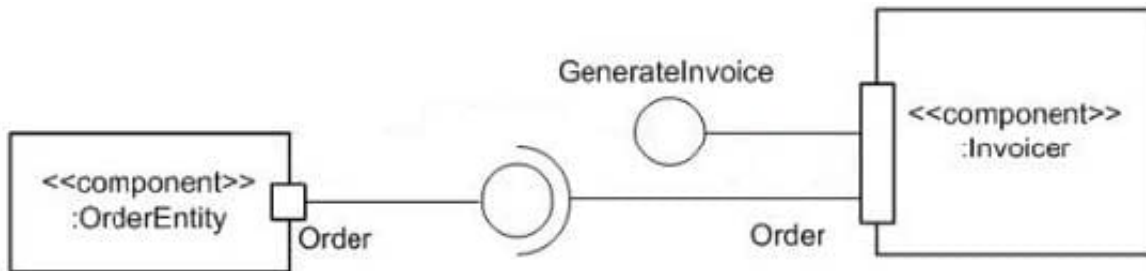


D. dependencies

Correct Answer: B

### QUESTION 8

What best describes the semantics modeled by the exhibit?



- A. The Order Entity component is part of the internals of the Invoicer component.
- B. The Invoicer has a complex connector that connects the Generate Invoice interface with the Order interface.
- C. This is an illegal diagram.
- D. The Invoicer has a complex port that provides the interface Generate Invoice and requires the interface Order.

Correct Answer: D

### QUESTION 9

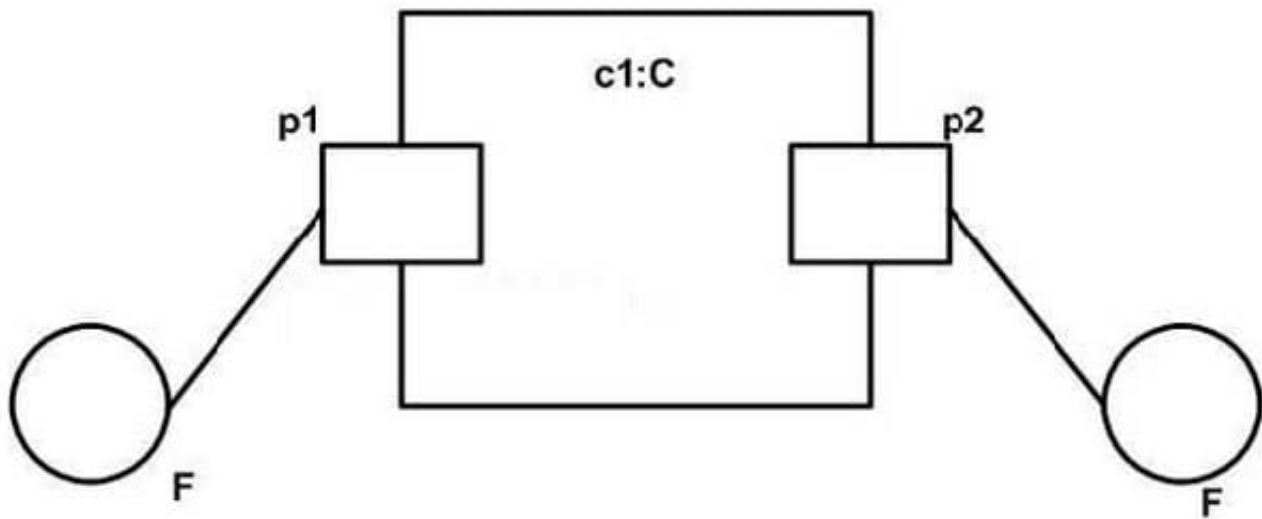
What does a choice pseudostate designate?

- A. point at which outgoing guards are evaluated
- B. point whose outgoing transitions are optional
- C. point with an associated Boolean condition
- D. a conditional fork pseudostate
- E. point that is chosen dynamically during execution

Correct Answer: A

### QUESTION 10

What does the composite structure exhibit show?



- A. The diagram is not valid.
- B. Requests for behavioral features of interface F through ports p1 and p2 will always result in the same behavior.
- C. The two F interfaces must come from different packages.
- D. Requests for behavioral features of interface F through

Correct Answer: D

### QUESTION 11

How many arrows can connect to a partition?

- A. any number
- B. none
- C. two
- D. one

Correct Answer: B

### QUESTION 12

What indicates an artifact instance in UML notation? (Choose two.)

- A. single sheet icon with a folder-over corner
- B. syntactically well-formed file name
- C. class box with two smaller rectangles on its left side



D. memo box

E. keyword

Correct Answer: AE

---

### QUESTION 13

What best describes the distinction between a delegation connector and an assembly connector?

- A. Assembly connectors provide white box views of components, while delegation connectors provide black box views.
- B. An assembly connects two components while a delegation connector connects the internal contract of a component with its external parts.
- C. A delegation connector can be used to model the internals of a component, while an assembly connector cannot.
- D. An assembly connector connects the required interface or required port on one component with the provided interface or provided port of another component, while a delegation connector connects the external contract of a component with its internal parts.

Correct Answer: D

---

### QUESTION 14

What can return a result on an output pin?

- A. Destroy Object Action
- B. Call behavior Action
- C. Add Variable Value Action
- D. Send Object Action
- E. Broadcast Signal Operation

Correct Answer: B

---

### QUESTION 15

What is true about a pseudostate?

- A. a state that can be specialized for different purposes
- B. a state entry or exit point
- C. a specification of a potential state
- D. not a state but a vertex



Correct Answer: D

[OMG-OCUP2-INT200 VCE Dumps](#)

[OMG-OCUP2-INT200 Practice Test](#)

[OMG-OCUP2-INT200 Study Guide](#)