



NS0-509^{Q&As}

NetApp Certified Implementation Engineer - SAN - ONTAP

Pass NetApp NS0-509 Exam with 100% Guarantee

Free Download Real Questions & Answers **PDF** and **VCE** file from:

<https://www.passapply.com/ns0-509.html>

100% Passing Guarantee
100% Money Back Assurance

Following Questions and Answers are all new published by NetApp
Official Exam Center

- ⚙️ **Instant Download** After Purchase
- ⚙️ **100% Money Back** Guarantee
- ⚙️ **365 Days** Free Update
- ⚙️ **800,000+** Satisfied Customers





QUESTION 1

Changes to your organization requires access to an SVM be given to a group of individuals. Your company uses Active Directory as a method of access control. You decide to use the security login create -vserver engCluster - user-or-group-name CORP\Admins -application ssh -authmethod domain -role vsadmin command.

In this scenario, which access rights will this command grant?

- A. read only rights to the SVM engCluster for Active Directory group CORP
- B. vsadmin rights to the SVM engCluster for Active Directory group CORP\Admins
- C. vsadmin rights to the SVM CORP for Active Directory group CORP\Admins
- D. vsadmin rights to the SVM engCluster for Active Directory group CORP

Correct Answer: B

QUESTION 2

Click the Exhibit button.

Question **Exhibit**

```
slot 0: Fibre Channel Target Host Adapter 0e
(QLogic CNA 8324 (8362) rev. 2, <LINK NOT CONNECTED>)
Firmware rev:      8.5.1
Flash rev:         4.1.0
Host Port Addr:    000000
FC Nodename:       50:0a:09:80:80:c1:72:4b (500a098080c1724b)
FC Portname:       50:0a:09:84:80:c1:72:4b (500a098480c1724b)
Connection:        No link
Switch Port:       Unknown
SFP Vendor Name:   AVAGO
SFP Vendor P/N:    AFBR-703SMZ-NA3
SFP Vendor Rev:    G2.3
SFP Serial No.:    AD1405A062S
SFP Connector:     LC
SFP Capabilities:  10 Gbit/Sec
```

You connected your FAS8200 to a Brocade SAN switch. As shown in the exhibit, port 0e is not available. In this scenario, which statement is correct?

- A. The incorrect SFP+ module is installed.
- B. The switch zoning is using the FC nodename.
- C. The incorrect firmware revision is installed.
- D. The switch port is configured for mode E_Port.

Correct Answer: D



QUESTION 3

An administrator who is using the Virtual Storage Console (VSC) creates a new FC datastore on an existing volume. While the datastore was provisioned, two hosts were in maintenance mode. When the maintenance was completed, the two hosts do not have access to the new datastore, but they have access to other datastores on the same volume.

In this scenario, what caused this result?

- A. The VSC cannot create datastores while hosts are in maintenance mode.
- B. During host maintenance, the FC HBAs were replaced with different FC HBAs.
- C. The VSC created a new igroup that contains only the hosts that were online during the datastore creation.
- D. After creation using the VSC, the administrator needs to create a LUN mapping.

Correct Answer: C

Reference: <https://library.netapp.com/ecmdocs/ECMP1392339/html/GUID-BD43C5D6-0952-4B62-8EECCF6642FEC9AC.html>

QUESTION 4

While expanding a 200 GB LUN in an ONTAP 9.4 system, the following error is observed:

```
cluster1::*> lun resize -path /vol/lun_vol/lun -size +3T  
Error: command failed: New size exceeds this LUN's initial geometry
```

What is the cause of this error?

- A. The volume auto-grow is disabled.
- B. The LUN reached maximum capacity.
- C. The LUN can be expanded up to 10 times its original size.
- D. Space reservation is enabled.

Correct Answer: A

QUESTION 5

A storage administrator created a LUN using two ports on a storage system. Later, additional LUNs were added to the same node as the original LUN. After a while, the performance of the original LUN dropped beyond an acceptable level.

What would you advise to remedy the Issue?

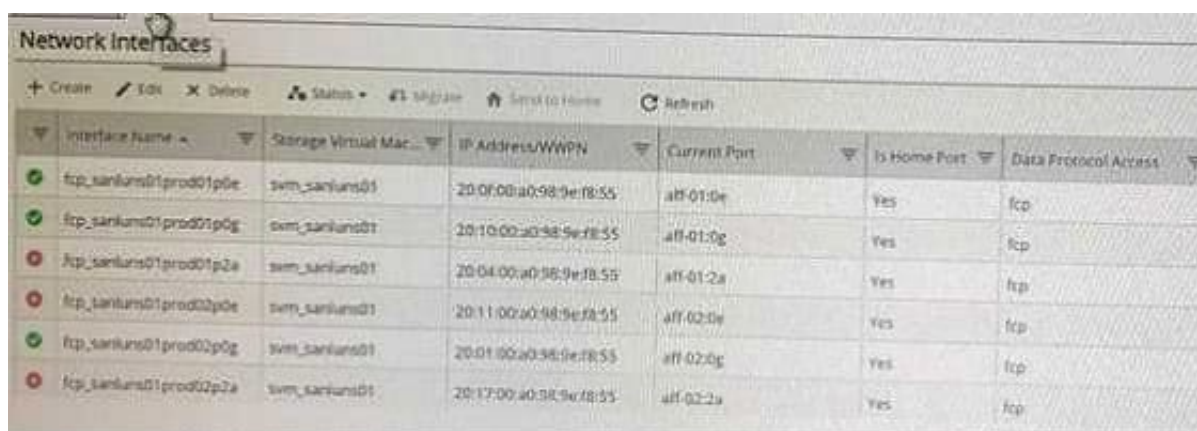


- A. Add an additional switch between the hosts and cluster.
- B. Add new LIFs on unused ports.
- C. Add new LIFs on the used ports.
- D. Reduce the queue depth on the used ports.

Correct Answer: B

QUESTION 6

Exhibit.



Interface Name	Storage Virtual Mac	IP Address/WWN	Current Port	Is Home Port	Data Protocol Access
fcip_sanluns01prod01p0e	svm_sanluns01	20:0f:00:a0:98:9e:f8:55	af0-01:0e	Yes	fcip
fcip_sanluns01prod01p0g	svm_sanluns01	20:10:00:a0:98:9e:f8:55	af0-01:0g	Yes	fcip
fcip_sanluns01prod01p2a	svm_sanluns01	20:04:00:a0:98:9e:f8:55	af0-01:2a	Yes	fcip
fcip_sanluns01prod02p0e	svm_sanluns01	20:11:00:a0:98:9e:f8:55	af0-02:0e	Yes	fcip
fcip_sanluns01prod02p0g	svm_sanluns01	20:01:00:a0:98:9e:f8:55	af0-02:0g	Yes	fcip
fcip_sanluns01prod02p2a	svm_sanluns01	20:17:00:a0:98:9e:f8:55	af0-02:2a	Yes	fcip

Referring to the exhibit, which FC LIF would cause a path failure on a host connecting to a LUN?

- A. fcip_sanluns01prod02p0e
- B. fcip_sanluns01prod02p0g
- C. fcip_sanluns01prod02p0g
- D. fcip_sanluns01prod02p0e

Correct Answer: A

QUESTION 7

The ESX host reports inconsistent performance for iSCSI-based connectivity. In this scenario, what would cause this problem?

- A. The host and storage are connected to different switches.
- B. The flow control was disabled on the storage.
- C. The hardware initiators were used instead of software.
- D. The flow control is enabled on the storage.



Correct Answer: B

QUESTION 8

Click the Exhibit button.

Question		Exhibit					
cl1::> network fcp adapter show							
Node	Adapter	Connection Established	Port Address	Admin Status	Operational Status		
node1	0e	false	0	up	link	not	connected
node1	0f	false	0	up	link	not	connected
node1	0g	false	0	up	link	not	connected
node1	0h	false	0	up	link	not	connected
node2	0e	false	0	up	link	not	connected
node2	0f	false	0	up	link	not	connected
node2	0g	false	0	up	link	not	connected
node2	0h	false	0	up	link	not	connected

You have an existing 2-node AFF A300 cluster with premium bundle licensing applied. You need to have consistently low front end latency, and have determined that NVMe satisfies this requirement.

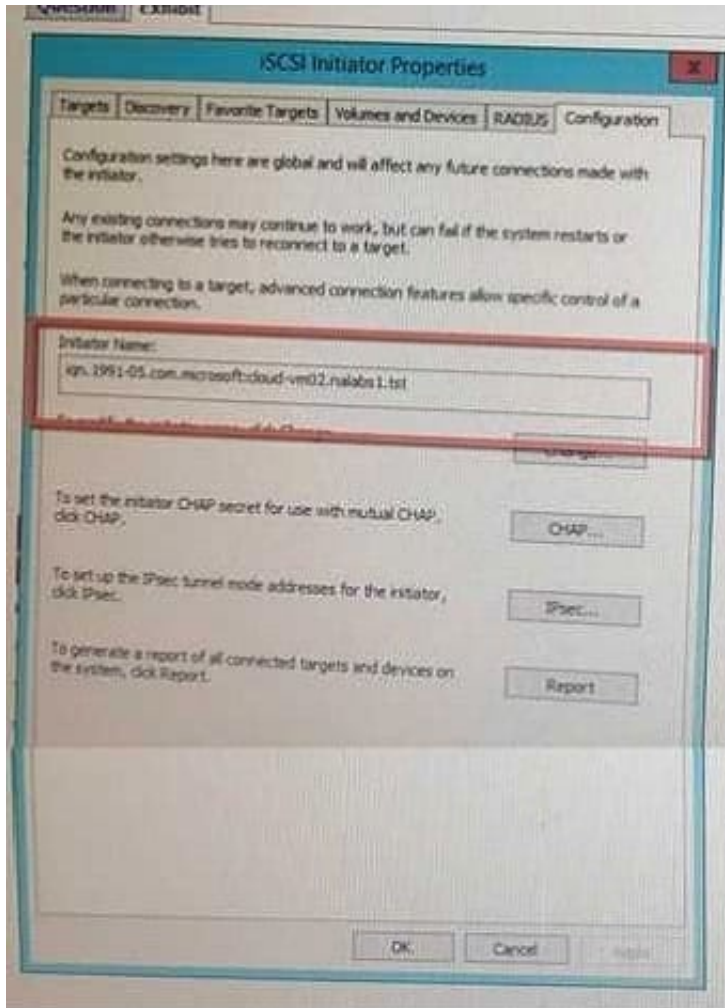
Referring to the exhibit, which two actions would accomplish this task? (Choose two.)

- A. Add a UTA2 adapter to each of the two AFF A300 nodes.
- B. Add a 32 GB FC HBA to each of the two AFF A300 nodes.
- C. Apply the license for FCP.
- D. Apply the license for NVMe.

Correct Answer: BD

QUESTION 9

Exhibit.



You want to map a LUN to a server.

To which SAN object is the highlighted value in the exhibit added?

- A. LUN
- B. fabric zone
- C. FlexClone
- D. igroup

Correct Answer: D

QUESTION 10

You are setting up FC ports and must configure the speeds for both the SAN and the host ports. In this scenario, which statement is correct?

- A. Set the target port speed higher than the switch port speed.
- B. Set the target port speed to auto-negotiation.

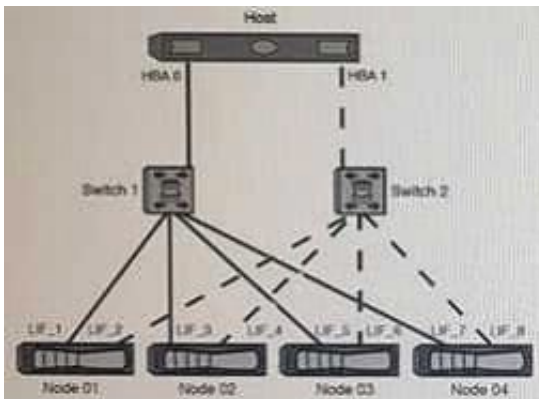


- C. Set the target port speed to match the switch port speed.
- D. Set the target port speed lower than the switch port speed.

Correct Answer: B

QUESTION 11

Exhibit.



Referring to the exhibit, which type of zoning should be used?

- A. a WWPN with a single initiator and multiple targets
- B. a WWPN with a single initiator and a single target
- C. a WWNN with a single initiator and multiple targets
- D. a WWNN with a single Initiator and a single target

Correct Answer: B

QUESTION 12

Which two features does Asymmetric Namespace Access (ANA) support? (Choose two.)

- A. multipathing
- B. LUN masking
- C. LUN hosting
- D. path management

Correct Answer: AD

Reference: <https://www.netapp.com/us/media/tr-4684.pdf> (16)

**QUESTION 13**

Exhibit.

```
cl01::> system hardware unified-connect show
```

Node	Adapter	Current Mode	Current Type	Pending Mode	Pending Type	Admin Status
cl01-01	3a	fc	target	-	-	online
cl01-01	3b	fc	target	-	-	online
cl01-02	3a	fc	target	-	-	online
cl01-02	3b	fc	target	-	-	online

4 entries were displayed.

```
cl01::>
```

You want to configure a UTA2 port as an FCoE target. Referring to the exhibit, which action must be performed?

- A. Configure the port mode as CNA.
- B. Configure the port mode as Ethernet.
- C. Configure the port type as initiator.
- D. Configure the port mode as FC.

Correct Answer: A

QUESTION 14

Click the Exhibit button.



Question

Exhibit

```
::> volume efficiency show -inst

Vserver Name: svm1
Volume Name: vol1
Volume Path: /vol/vol1
State: Enabled
Status: Idle
Progress: Idle for 06:12:36
Type: Regular
Schedule: -
Efficiency Policy Name: inline-only
. . .
Compression: true
Inline Compression: true
Constituent Volume: false
Inline Dedupe: true
Data Compaction: false
Cross Volume Inline Deduplication: false
Cross Volume Background Deduplication: false

::> df -s -vserver svm1 -volume vol1
Filesystem      used      total-saved    %total-saved    deduplicated    %
deduplicated    compressed    %compressed
/vol/vol1/      29524919032  14762459516    50%             14762459516    50%    0    0%
```

You are troubleshooting high CPU use on a FAS8200 with all SAS HDDs. You have SAN hosts with LUNs in a volume named vol1. You want to reduce CPU use and maintain storage efficiencies.

Referring to the exhibit which three actions will accomplish this task? (Choose three.)

- A. Disable compression.
- B. Enable cross-volume deduplication.
- C. Disable inline deduplication.
- D. Enable post process deduplication.
- E. Enable data compaction.

Correct Answer: CDE

QUESTION 15

You are implementing a new AFF A800 HA pair and are required to migrate NetApp E-Series E2624 data to the AFF A800 controllers. You do not have a host server that is available for the migration.

In this scenario, which NetApp migration method is supported?

- A. OnCommand Unified Manager (OCUM)
- B. NetApp Data Availability Services (NDAS)
- C. SnapMirror Synchronous (SM-S)
- D. Foreign LUN Import (FLI)

Correct Answer: D



VCE & PDF

PassApply.com

<https://www.passapply.com/ns0-509.html>

2024 Latest passapply NS0-509 PDF and VCE dumps Download

[NS0-509 PDF Dumps](#)

[NS0-509 Practice Test](#)

[NS0-509 Exam Questions](#)