



# NS0-194<sup>Q&As</sup>

NetApp Certified Support Engineer

## Pass NetApp NS0-194 Exam with 100% Guarantee

Free Download Real Questions & Answers **PDF** and **VCE** file from:

<https://www.passapply.com/ns0-194.html>

100% Passing Guarantee  
100% Money Back Assurance

Following Questions and Answers are all new published by NetApp  
Official Exam Center

-  **Instant Download** After Purchase
-  **100% Money Back** Guarantee
-  **365 Days** Free Update
-  **800,000+** Satisfied Customers



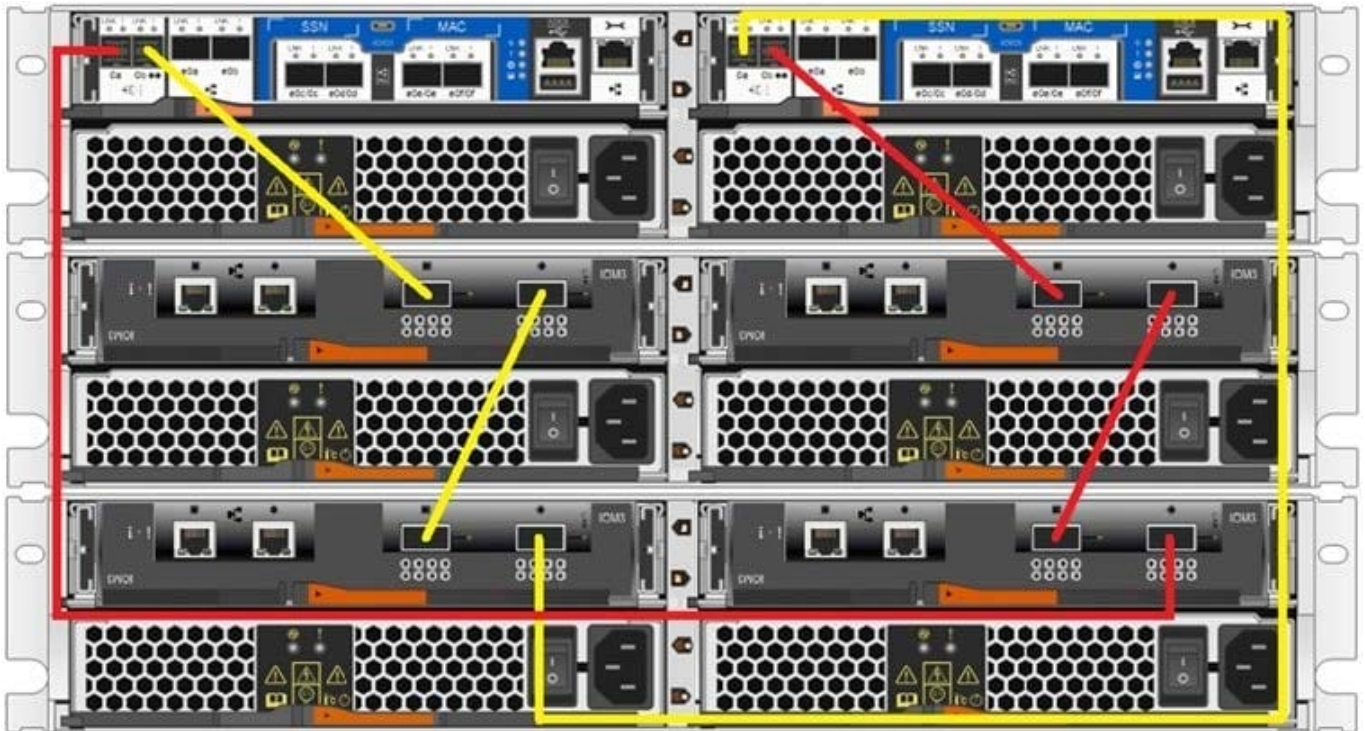


### QUESTION 1

You receive the error shown below on a FAS2750 HA pair.

```
Mon Jun 24 00:27:30 UTC [NetappA: scsi_cmdblk_strthr_admin: scsi.cmd.checkCondition:error]: Unknown device 0a.00.99: Check Condition: CDB 0x12: Sense Data SCSI:hardware error - (0x4 - 0x44 0x0 0x0) (0).
```

The system is cabled as shown in the exhibit.



What should you do to clear the error?

- A. Replace the cable connected to controller A's 0a port.
- B. Replace the controller of controller B.
- C. Replace the controller of controller A.
- D. Re-cable the system per the FAS2750 installation guide.

Correct Answer: C Section: (none)

### QUESTION 2

For testing purposes, your customer decides to use FC on a single-node ONTAP cluster. There is only one host that the customer expects to use. High availability is not a concern for this test. The customer connects the host directly to the ONTAP node. The LUN is set up, and the igroup is configured. When the customer tries to attach to the LUN from the host, the LUN is not seen by the host.

Which statement is correct in this scenario?



- A. Multipathing must be used and connected to another FC path.
- B. NPV must be enabled on the host before trying to attach to the LUN.
- C. NPIV must be enabled on the host before trying to attach to the LUN.
- D. An FC switch must be used with ONTAP.

Correct Answer: B Section: (none)

---

### QUESTION 3

In ONTAP 9.5, the event log show command queries and displays entries from which file?

- A. messages.log
- B. ems.log
- C. bcomd.log
- D. mgwd.log

Correct Answer: B Section: (none)

Reference: [https://docs.netapp.com/ontap-9/index.jsp?topic=%2Fcom.netapp.doc.dot-cm-cmpr-930%2Fevent\\_\\_log\\_\\_show.html](https://docs.netapp.com/ontap-9/index.jsp?topic=%2Fcom.netapp.doc.dot-cm-cmpr-930%2Fevent__log__show.html)

---

### QUESTION 4

A customer ordered a FAS2720 cluster with 8 TB SATA drives. The customer wants to use the Advanced Drive Partitioning (ADP) feature to avoid consuming the high capacity drives for the root aggregate. Before you use the cluster setup, you issue the aggr status command and notice that ADP is not being used.

In this scenario, what would you use to implement ADP?

- A. loader prompt
- B. special boot menu
- C. nodeshell
- D. SP prompt

Correct Answer: A Section: (none)

---

### QUESTION 5

While troubleshooting client access issues to a CIFS share, you notice that the issue only occurs when the data LIF that the clients are accessing is on a specific node in the cluster.

In this scenario, which configuration should you review to determine why this issue is happening?



- A. cluster health
- B. Kerberos
- C. share path
- D. export policies

Correct Answer: B Section: (none)

Reference: [https://library.netapp.com/ecm/ecm\\_download\\_file/ECMLP2426787](https://library.netapp.com/ecm/ecm_download_file/ECMLP2426787)

---

#### QUESTION 6

A customer must store physical hard copies of transaction data off site to meet regulatory requirements. Which NetApp technology enables the customer to accomplish this task?

- A. SnapVault
- B. NDMP
- C. SVM DR
- D. FlexCache

Correct Answer: A Section: (none)

Reference:  
<https://library.netapp.com/ecmdocs/ECMP1635994/html/GUID-74F9AB84-BF01-4F0F-91977C4D8C3F8002.html>

---

#### QUESTION 7

What are two conditions that would cause writes in memory to be written to disk? (Choose two.)

- A. The NVRAM (NVLog) fills up.
- B. A user presses "Save".
- C. Drive capacity becomes available.
- D. A Snapshot copy is taken.

Correct Answer: AB Section: (none)

---

#### QUESTION 8

How many drive bays does a DS4246 shelf have?

- A. 42
- B. 12



C. 46

D. 24

Correct Answer: D Section: (none)

Reference: [https://www.insight.com/en\\_US/shop/product/DS4246074812AQSR6/NETAPP/DS4246-074812A-QS-R6/NetAppStorageShelfDS4246-Storageenclosure-24bays\(SAS-2\)-HDD4TBx12-rack-mountable4U/](https://www.insight.com/en_US/shop/product/DS4246074812AQSR6/NETAPP/DS4246-074812A-QS-R6/NetAppStorageShelfDS4246-Storageenclosure-24bays(SAS-2)-HDD4TBx12-rack-mountable4U/)

---

### QUESTION 9

You received the "CLUSTER ERROR: DISK/SHELF COUNT MISMATCH" AutoSupport message from an ONTAP cluster.

When analyzing this message, which two should be inspected? (Choose two.)

- A. drive paths
- B. IOM firmware
- C. drive firmware
- D. SAS cabling

Correct Answer: AC Section: (none)

---

### QUESTION 10

A customer will need to perform an upgrade from 9.0 to 9.4.

Which feature of ONTAP enables nondisruptive hardware maintenance for this upgrade?

- A. aggregate relocation
- B. FlexVol
- C. FlexGroup
- D. RAID-TEC

Correct Answer: A Section: (none)

Reference: <https://docs.netapp.com/ontap-9/index.jsp?topic=%2Fcom.netapp.doc.dot-cm-hacg%2FGUID519510F4-AE00-4859-9706-217553D05FB9.html>

[Latest NS0-194 Dumps](#)

[NS0-194 PDF Dumps](#)

[NS0-194 Exam Questions](#)