



JPR-934^{Q&As}

Security, Expert (JNCIE-SEC)

Pass Juniper JPR-934 Exam with 100% Guarantee

Free Download Real Questions & Answers **PDF** and **VCE** file from:

<https://www.passapply.com/jpr-934.html>

100% Passing Guarantee
100% Money Back Assurance

Following Questions and Answers are all new published by Juniper
Official Exam Center

- ⚙️ **Instant Download** After Purchase
- ⚙️ **100% Money Back** Guarantee
- ⚙️ **365 Days** Free Update
- ⚙️ **800,000+** Satisfied Customers





QUESTION 1

You administer your company\\'s Windows network. The network consists of 25 Windows Server computers. The network contains an offline root Certification Authority (CA) located in the main office and a subordinate issuing CA in the main

office and each of the remaining four retail locations.

One of the four retail locations has been purchased and will operate as a franchise. You must ensure that resources on the company network will not accept certificates from the associated subordinate CA in this retail location after the sale is

completed. Your solution must use a minimum amount of administrative effort.

What should you do? (Choose three. Each correct answer presents part of the solution.)

- A. On the company\\'s root CA, revoke the certificate of the subordinate CA.
- B. Disconnect the subordinate CA from the network.
- C. On the subordinate CA, remove the CA software and remove the CA files.
- D. On the subordinate CA, revoke the certificates that it has issued.
- E. Publish a new Certificate Revocation List.
- F. Copy the Edb.log file from the root CA to its Certification Distribution Point on your network.
- G. Copy the Edb.log file from the subordinate CA to its Certification Distribution Point on your network.
- H. Copy the Certificate Revocation List file to the Certificate Distribution Point on your network.

Correct Answer: AEH

QUESTION 2

You are setting up a procedure to keep documents exchanged between members of the R and D department secret. They will be sending these documents across the Internet to each other. Which PKI process will you need to employ to achieve this?

- A. Confidentiality
- B. Non-repudiation
- C. Authentication
- D. Data Integrity

Correct Answer: A

QUESTION 3



Which of the following addresses is suitable for dividing into at least nine subnets, each with the ability to support 200 hosts per network?

- A. 10.1.1.0/24
- B. 10.1.1.0/20
- C. 10.1.1.0/19
- D. 10.1.1.0/22

Correct Answer: BC

QUESTION 4

You are proposing the purchase of a new e-mail server for your corporate network. You have specified a new server from a major OEM manufacturer that is configured with a powerful quad-processor configuration, hot-swappable hard drives, and redundant power supplies and network adapters, with a three-year onsite warranty. Due to a budget crunch, the chairperson of the budget committee has suggested that the company can make do with a less powerful workgroup server from a local computer store. This server has only a single processor and no redundancy features, and a one-year onsite warranty. What reasons can you provide the budget committee members that might convince them to authorize the purchase of the server that you specified, even though it has a higher price tag?

- A. A more powerful server will provide better performance and scalability as the company's needs grow over time.
- B. Redundant hardware components will increase the server's availability to service the needs of the company's users and customers.
- C. The extended warranty on the more powerful server will increase support costs over time, since you're paying to cover the machine under warranty for three times as long.
- D. Windows Server requires at least a dual-processor configuration.

Correct Answer: AB

QUESTION 5

You have several users who dial in to a remote access server using multilink connections, combining two modems into a single link. Although this provides a higher bandwidth to the users, you find the server runs out of modem lines frequently, and most users are not using their connections to their full potential. Which of the following is a solution to this issue?

- A. Disable multilink connections.
- B. Set the maximum number of multilink ports to one.
- C. Use VPN instead of dial-in access.
- D. Enable Bandwidth Allocation Protocol (BAP).

Correct Answer: D



QUESTION 6

The ABC.com network consists of a single Active Directory domain named ABC.com.

You want to improve the security on the Windows Server domain controllers by configuring enhanced password policies and audit settings.

Which security template should you apply to the domain controllers?

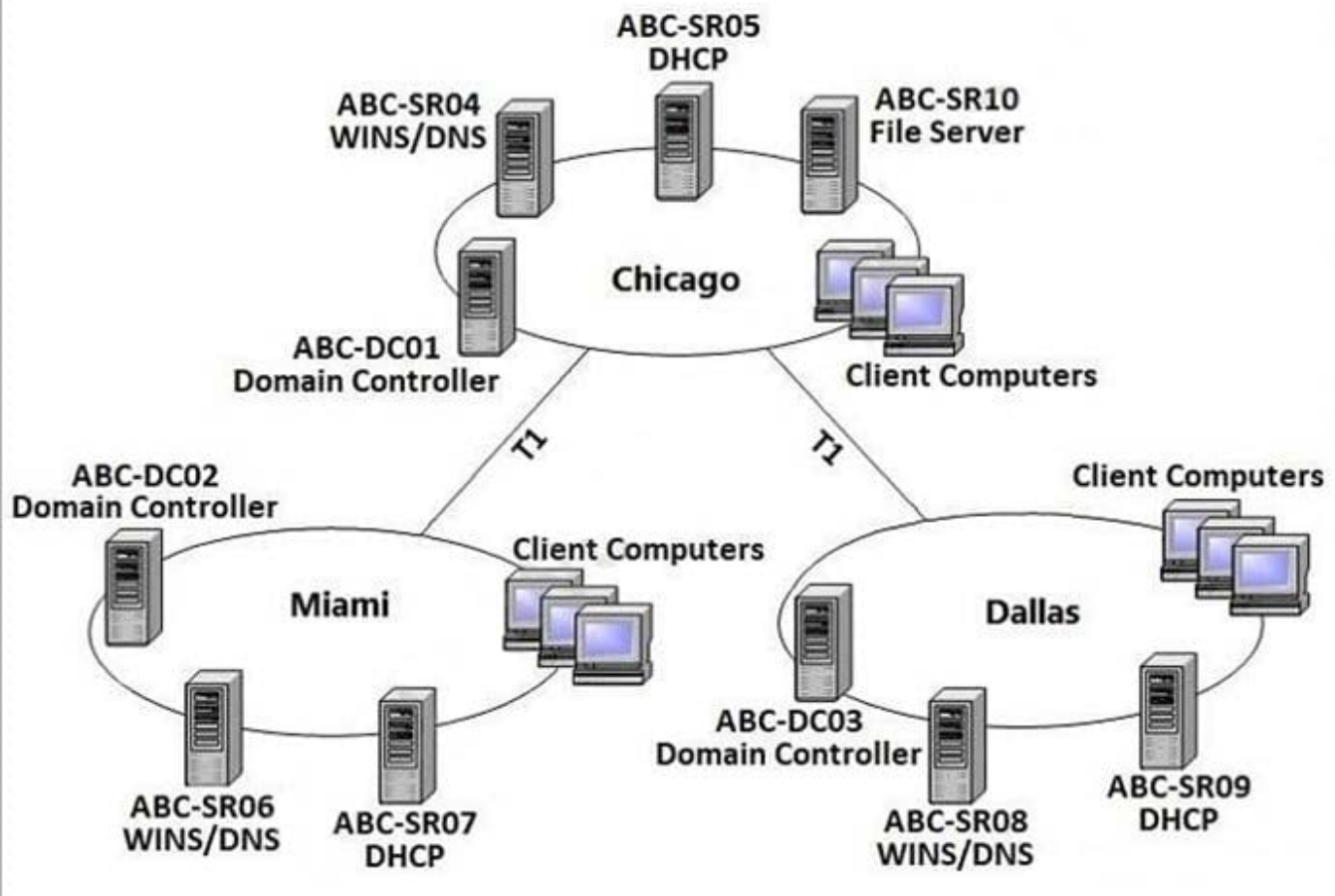
- A. Setup security.inf.
- B. Hisecws.inf.
- C. DC security.inf.
- D. Securews.inf.
- E. Securedc.inf.
- F. Compatws.inf.
- G. Rootsec.inf.

Correct Answer: E

QUESTION 7

The ABC.com network consists of a single Active Directory domain named ABC.com. All servers on the ABC.com network run Windows Server.

ABC.com has its headquarters in Chicago and two branch offices in Dallas and Miami. The branch offices are connected to the headquarters by means of T1 WAN links. The network at each office is configured as a separate Active Directory site as shown below.



ABC.com users in all three sites require access to a file server named ABC-SR10 that is located in the Chicago site.

Users in the Miami and Dallas offices are complaining about the unacceptable file server performance during peak working hours. You want to design a solution that provides fault tolerance for the file server and minimizes traffic over the WAN

links during office hours.

Which solution would you recommend?

- A. Implement a Distributed File System (DFS) with the DFS root in the Chicago office and DFS replicas in the Dallas and Miami offices. Configure replication to occur during off-peak hours.
- B. Install Windows Server file servers in the Dallas and Miami offices. Use the File Replication Service to replicate the folders during off-peak hours.
- C. Implement a two-node file server cluster in the Chicago office using Microsoft Cluster Services.
- D. Implement a two-node file server cluster in each office using Microsoft Cluster Services.

Correct Answer: A

QUESTION 8

You have just installed the DHCP service on a stand-alone Windows Server system. You place the server on one of the



subnets. You soon discover that clients are not leasing an IP address from the server. You open the DHCP console and

see that the DHCP service is not started.

What should you do?

- A. Reinstall the DHCP service.
- B. Add the DHCP server to the domain.
- C. Authorize the DHCP server.
- D. Check the system event log to find any clues as to why the service will not start.

Correct Answer: D

QUESTION 9

The company consists of an Active Directory domain called ABC.com. All servers on the corporate network run Windows Server.

The network contains a server that runs Internet Authentication Service (IAS) called ABC-SR01. ABC-SR01 also runs the Routing and Remote Access service to provide VPN access to the network for external users. During routine monitoring

you discover that an external unauthorized user is trying to access the network through ABC-SR01.

How would you set up ABC-SR01 to log the IP addresses of the remote computers when they attempt to connect to the network using the VPN connection?

- A. Log the details of the access attempts by the VPN users by using IAS to configure the Authentication requests option enabled in the Remote Access Logging.
- B. Log the details of the access attempts by the VPN users by configuring the Routing and Remote Access service to log all IPsec connections.
- C. Log the details of the access attempts by the VPN users by enabling auditing of TCP/IP.sys.
- D. Log the details of the access attempts by the VPN users by enabling auditing of all Account Logon events on a domain controller.

Correct Answer: A

QUESTION 10

You work as It Admin at ABC.com. The ABC.com network consists of a domain named ABC.com. The servers at the ABC.com network run Windows Server. The ABC.com network has a file server named ABC-SR18. ABC-SR18 hosts shared folders.

During your routine monitoring, you notice that ABC-SR18 has a connectivity issue. To investigate further you run Network Monitor, but notices that during capturing, network packets were dropped.



What actions must you take to minimize the dropping of packets while monitoring ABC-SR18?

- A. You should configure a persistent demand-dial connection.
- B. You should configure a two-way initiated demand-dial connection.
- C. You should use dedicated capture mode when utilizing the Network Monitor.
- D. You should select the Do not overwrite events option in the Event Viewer.

Correct Answer: C

QUESTION 11

You work as the network administrator at ABC.com. The ABC.com network consists of a domain named ABC.com.

ABC.com has several subsidiary companies whose Web sites and DNS zones are hosted on servers at ABC.com.

What actions must you take to allow the DNS server at ABC.com to generate a report of the listed zones on a weekly basis?

- A. You need to utilize the ipconfig/registerdns.
- B. You need to NetMon utility on the DNS server.
- C. You need to utilize the dnscmd utility on the DNS server.
- D. You need to utilize the ADSIEdit utility on the DNS server.

Correct Answer: C

QUESTION 12

You want to use the RSoP tool in logging mode to build some reports on the existing policy settings of one of your client computers. You have used RSoP before in planning mode, but never in logging mode. You open the RSoP Wizard from the Active Directory Users and Computers console, as you've done before, but you notice that there is no mechanism for selecting the mode, and only planning mode seems to be available. What is the problem?

- A. The RSoP Wizard runs only in planning mode.
- B. You should open the RSoP Wizard from Active Directory Sites and Services instead.
- C. You should open the RSoP Wizard from the RSoP MMC instead.
- D. You can select logging mode when you open the RSoP in Active Directory Users and Computers. You must have overlooked the option.

Correct Answer: C

QUESTION 13



You are the server administrator for SRV05 which is a Windows Server Standard Edition file server in your domain. Your backup strategy utilizes one full backup and then daily differential backups. SRV05 has eight 72GB SCSI3 10,000RPM

drives in an external drive array for data and are set up using hardware RAID 5. SRV05 also has two additional 72GB SCSI3 10,000RPM drives internal to the system and they are configured in a RAID 1 arrangement. This volume holds the

system and boot partitions for the server's operating systems and a small amount of local application data.

The full back up is performed each Saturday at 9:00PM EST. The full back up takes 2 hours. The daily differential backups are performed each day at 9:00PM, Monday through Friday. There is no full backup nor differential backup performed

on Sunday. The amount of time needed for the differential backups varies but it is never less than 20 minutes and the maximum time never exceeds 75 minutes.

DNS07 has a hard disk failure in the external array at approximately 6:00PM on a Saturday. At 7:20PM a second drive in the external array also fails. What needs to be done to bring the server back to working order so that users can access

the data on the server?

Select the best answer.

- A. The failed drives need to be replaced and the data needs to be restored from the full backup.
- B. The failed drives need to be replaced and the data needs to be restored from the full backup and all of the differential backups.
- C. The failed drives need to be replaced. Nothing additional needs to be done because the RAID configuration allows the system to continue to run.
- D. The failed drives need to be replaced and the data needs to be restored from the full backup and the last differential backup.

Correct Answer: D

QUESTION 14

You are a consultant. You have been called in to troubleshoot a malfunctioning NLB cluster that is supposed to serve Web pages with IIS. The cluster contains four hosts, but only one host at a time will successfully form the cluster. Clients appear to have no problems connecting to any of the single-host cluster configurations. What is the most likely cause of the problem?

- A. The hosts are configured with duplicate priorities.
- B. The hosts are configured with different port rules.
- C. The hosts are configured with different cluster IP addresses.
- D. The hosts are configured with duplicate cluster IP addresses.

Correct Answer: A



QUESTION 15

You have enabled RRAS on your Windows Server computer. You want to set up IP packet filtering to help you manage access from remote clients. Where in the Routing and Remote Access console will you enable IP packet filters?

- A. The properties of the remote-access ports
- B. The properties of the remote-access server
- C. The profile of a remote-access policy
- D. The conditions of a remote-access policy

Correct Answer: C

[Latest JPR-934 Dumps](#)

[JPR-934 Practice Test](#)

[JPR-934 Exam Questions](#)