



HPE6-A49^{Q&As}

Aruba Certified Design Expert 8 Written Exam

Pass HP HPE6-A49 Exam with 100% Guarantee

Free Download Real Questions & Answers **PDF** and **VCE** file from:

<https://www.passapply.com/hpe6-a49.html>

100% Passing Guarantee
100% Money Back Assurance

Following Questions and Answers are all new published by HP Official Exam Center

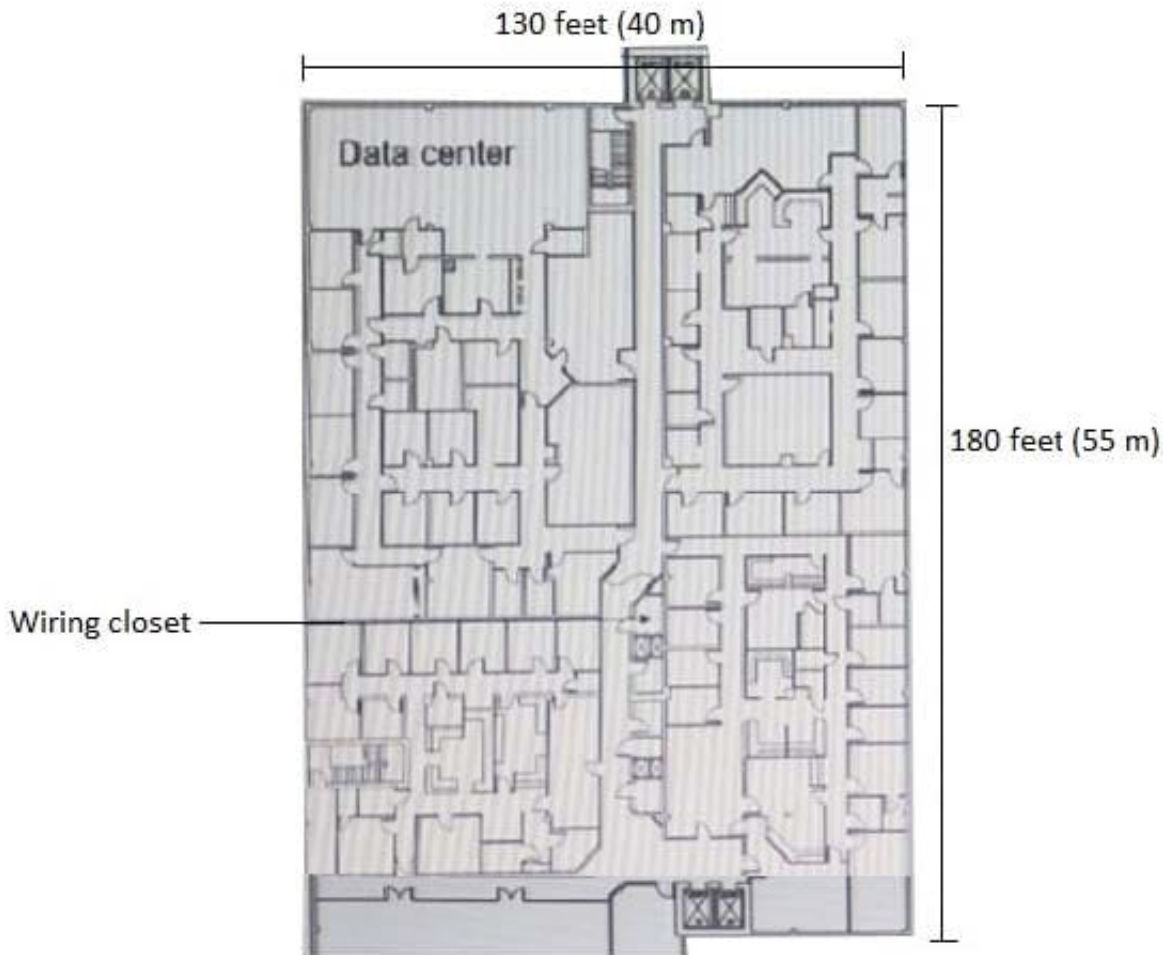
-  **Instant Download** After Purchase
-  **100% Money Back** Guarantee
-  **365 Days** Free Update
-  **800,000+** Satisfied Customers





QUESTION 1

Refer to the exhibit.



The customer requires a solution for the writing closet shown in the exhibit. The closet serves the entire floor, which is wired for CAT5e cable. The closet has four CAT5e cables to the data center 110 feet (34 m) away. The switch or switches in this closet will need to support 100 wired endpoints and 16 AP-345s. The switch or switches must connect to the network core, Aruba 5406R switches, in the data center on uplinks that provide at least 20 Gbps bandwidth total.

What is one benefit of an Aruba solution for meeting these requirements?

- A. AOS-Switches can meet the uplink bandwidth needs with an extensive array of choices for transceivers.
- B. Aruba PoE+ ports can provide more than 30W of power even to APs at the fat end of the floor.
- C. Aruba Smart Rate ports enable switches to achieve the required uplink speeds without expensive re-cabling.
- D. Aruba conditioning mode cables enable 10GbE SFP+ or 40GbE QSFP+ connections on copper cabling.

Correct Answer: B



QUESTION 2





A hospital needs an upgrade to 802.11ac for its wireless network. The wireless network supports: wireless medical devices medical staff voice communicators laptops in nurse stations medical staff tablets visitor and patient personal devices

All of these devices support both the 2.4GHz and 5GHz band. Assuming about a max throughput of 150 Mbps per AP, the hospital would like to support about 4 Mbps per client. The architect has used VisualRF to plan the AP placement on one of the floors, which the hospital expects will need to support about 800 wireless devices. The exhibits show heatmaps from this plan. The architect also plans to deploy APs in stairwells between floors.

How well does the plan meet the requirements?

- A. The current AP placement fails to account for the lead-lined walls that are common in patient and exam rooms.
- B. The current AP placement fails to provide adequate signal for the voice communicators in several areas.
- C. The current AP placement meets coverage requirements, but does not meet capacity requirements.



D. The current AP placement meets the customer requirements in terms of coverage and capacity.

Correct Answer: D

QUESTION 3

Refer to the exhibit.

Quotation - Composite View

Line#	Part Number	Description	Manufacturer	Unit Price	Quantity	Total	Price List
1.00	JY322A	Aruba 2930 48G PoE+ 1 slot Switch	Hewlett Packard Enter...	\$6,339.00	3	\$19,017.00	USA Price List (USD)
1.01	H2CA6E	HPE 3Y FC 4H Exch A 2930M 48G P SwT SVC [for JL322A]	Hewlett Packard Enter...	\$1,939.00	3	\$5,817.00	USA Price List (USD)
1.02	JL086A	Aruba X372 54VDC 680W Power Supply	Hewlett Packard Enter...	\$539.00	3	\$1,917.00	USA Price List (USD)
1.03	JL086A ABA	INCLUDED: Power Card - U.S. localization	Hewlett Packard Enter...	Incl.	3		
1.04	JL325A	Aruba 2930 2-port Stacking Module	Hewlett Packard Enter...	\$1,019.00	3	\$3,057.00	USA Price List (USD)
1.05	JL083A	Aruba 3810M/2930M 4SFP+ MACsec Module	Hewlett Packard Enter...	\$1,259.00	2	\$2,518.00	USA Price List (USD)
1.06	J9150D	Aruba 10G SFP+ LC SR 300m MMF Transceiver	Hewlett Packard Enter...	\$1,040.00	2	\$2,080.00	USA Price List (USD)
2.00	J9734A	Aruba 2920/2930M 0.5m Stacking Cable	Hewlett Packard Enter...	\$149.00	3	\$447.00	USA Price List (USD)
Quote Total						\$34,853.00	

A writing closet needs to support these devices: 100 desktops 5 printers 20 AP-345s

The customer wants to single-home the AP-345s and support higher than 1GbE speeds on the AP connections to future proof. The customer also requires that the closet have two 10GbE links to the core with SR transceivers. The exhibit shows the preliminary plan for this closet.

Which correction should the architect make to the plan to meet the customer requirements?

- A. Change all of the switches to the Aruba 2930M 40G 8 HPE Smart Rate PoE+ 1-Slot Switch.
- B. Change one switch to the 2930M 24-port Smart Rate PoE+ model.
- C. Add a 4-port SFP+ module to one of the switches.
- D. Add a Smart Rate module to each of the switches.

Correct Answer: C

QUESTION 4

An indoor sports stadium has 5,000 seats in two rings:

The stadium has a ceiling height of 72 feet (22 m).



There is a catwalk around the perimeter of the stadium that is 54 feet (13 m) from the floor.

There are two scoreboards at either end of the stadium.

The construction of the stadium is concrete and steel.

The customer has indicated a preference for overhead coverage, and the wireless network should support 3500 concurrent clients. The architect plans to install the APs on the catwalk to service sections of the floor below.

Which type of antennas are recommended for the APs that provide the overhead coverage?

- A. high gain directional
- B. high gain omnidirectional
- C. downtilt
- D. Yagi

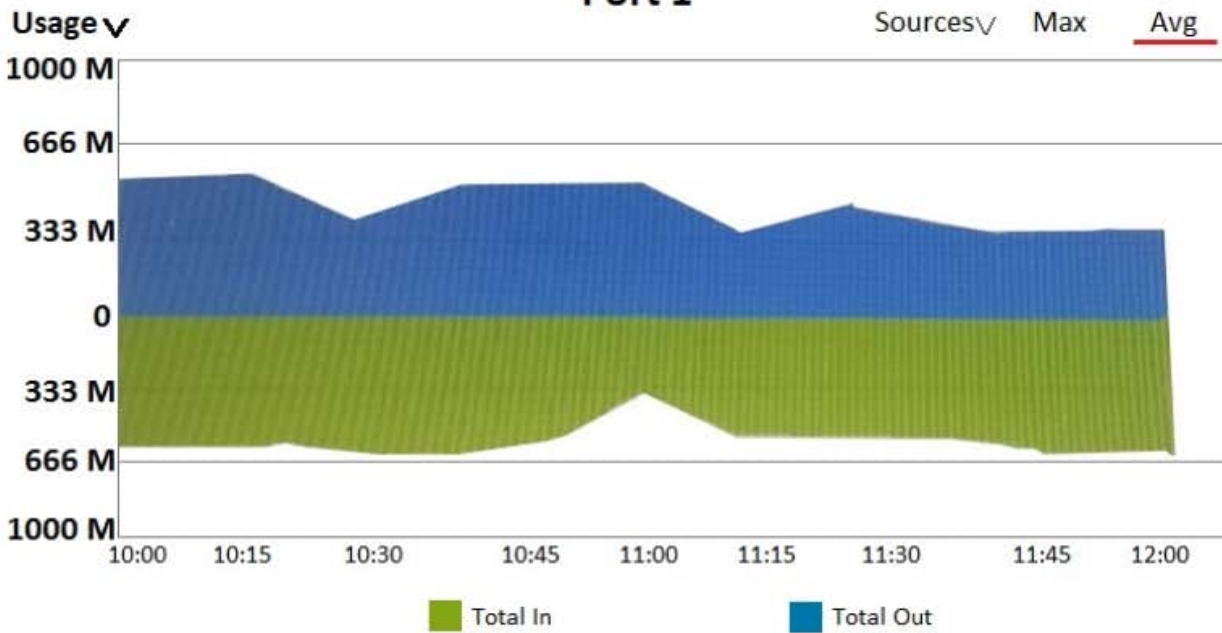
Correct Answer: A

QUESTION 5

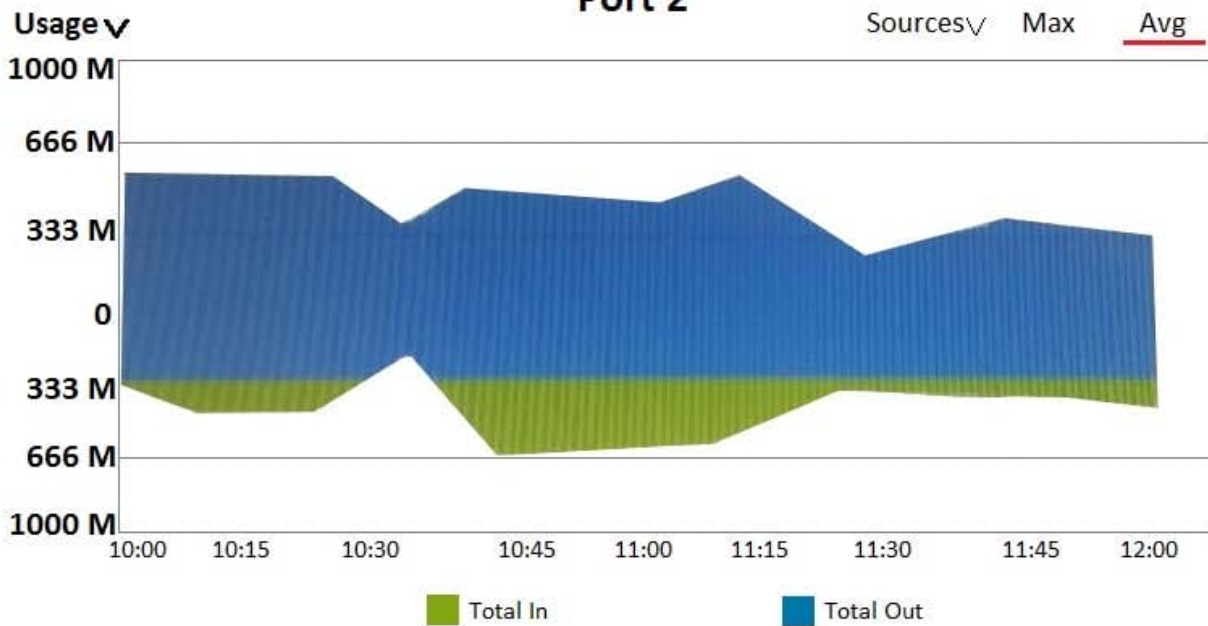
Refer to the exhibit.

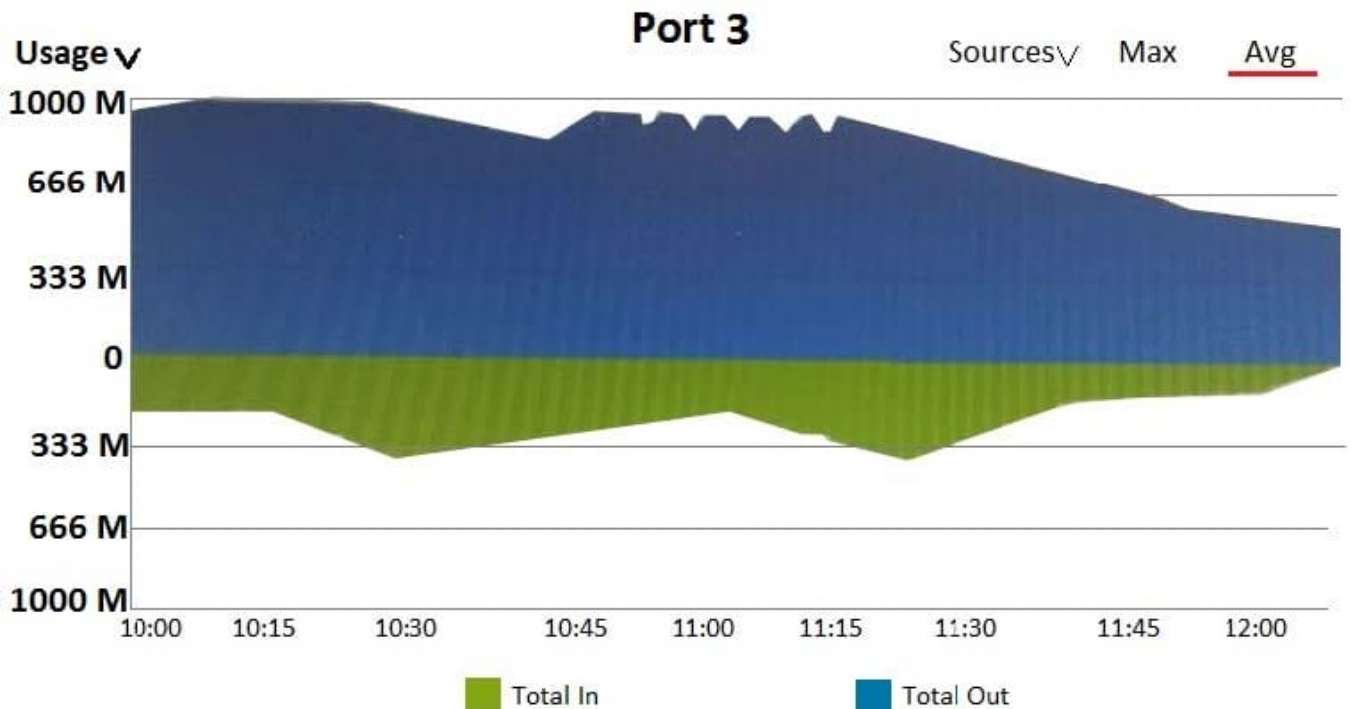


Port 1



Port 2





A customer needs a wired network upgrade and has complained about performance issues. The architect has collected information about traffic flow on several switch ports in different locations across the network, and the results are shown in the exhibit. Each of these ports is a 1Gbps port.

What can the architect conclude?

- A. None of these ports show any periods of congestion.
- B. Port 1 shows periods of congestion, other ports are not congested.
- C. Port 3 shows periods of congestion, other ports are not congested.
- D. All of the ports show serious congestion.

Correct Answer: D

QUESTION 6

A customer has Aruba network infrastructure devices that could be managed by either Aruba Central or Aruba AirWave.

Which customer characteristic should point the architect toward an AirWave recommendation as opposed to a Central recommendation?

- A. desire to lease managed services on an ongoing basis
- B. small IT staff and preference for cloud solutions
- C. policies that network management occurs on premises



D. need to support Zero Touch Provisioning (ZTP)

Correct Answer: C

QUESTION 7

A customer has phones used as wireless Voice over IP (VoIP) devices. Which is one implication for the design?

- A. Plan policies for the phone role on MCs to give the phones a high QoS priority.
- B. Ensure a -75 GHz signal in both the 2.4GHz band and the 5GHz band across the entire site.
- C. Ensure that APs connect on Smart Rate ports to support the high bandwidth demands of the phones.
- D. Apply a bandwidth contract to the phone VLAN to limit broadcast and multicast traffic.

Correct Answer: C

QUESTION 8

A writing closet needs to support 20 APs and 110 wired endpoints. It has four strands of OM3 fiber to the network core 150 feet (45 m) away. The customer wants the links to the network core to support at least 10GbE. The customer also requires no loss in connectivity for the switches in the closet, even with the loss of one link. The architect plans to recommend three 2930M 40G 8SR PoE+ switches, two 4-port SFP+ modules, and two SFP+ SR transceivers.

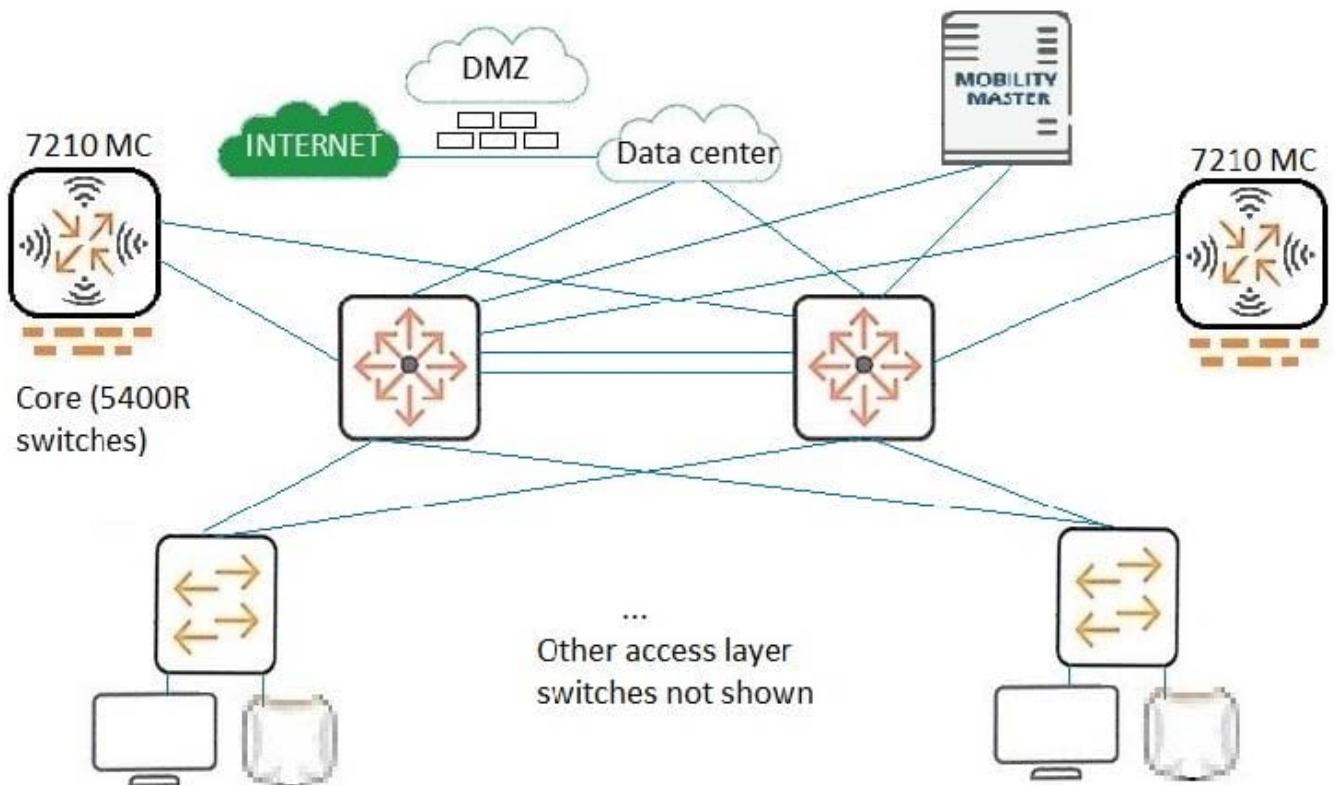
What should the architect change about the plan?

- A. Add three 10GbE direct attach cables (DACs) or three stacking cables.
- B. Add a stacking module for each switch and three stacking cables.
- C. Change the two SFP+ SR transceivers to SFP+ LRM transceivers.
- D. Add one 4-port SFP+ module and one SFP+ SR transceiver.

Correct Answer: A

QUESTION 9

Refer to the exhibit.



A customer needs a network upgrade. The customer has these availability requirements for wireless access:

One MC and one core switch can fail with immediate, stateful failover for client connections.

Network upgrades can occur without the requirement of a maintenance window.

The exhibit shows the architecture plan.

Which technologies should the architect recommend?

- A. Clustering on MCs and VRRP on Core switches
- B. VRRP on MCs and VSF on Core switches
- C. VRRP on both MCs and Core switches
- D. Clustering on MCs and VSF on Core switches

Correct Answer: A

QUESTION 10

Refer to the exhibit.



Quotation - Composite View

Line#	Part Number	Description	Manufacturer	Unit Price	Quantity	Total	Price List
1.00	JY680A	Aruba AP-303H (US) Unified AP	Hewlett Packard Enter..	\$495.00	200	\$99,000.00	USA Price List (USD)
1.01	H6PQ1E	Aruba 1Y FC NBD Exch AP-303H SVC [for JY680A]	Hewlett Packard Enter...	\$22.00	200	\$4,400.00	USA Price List (USD)
Quote Total						\$103,400	

A hotel needs a wireless solution. The architect has selected 303H Series, controlled by a local MC, as the best choice. The hotel plans to have the APs installed in the existing wall boxes which have one Ethernet port each. The architect has created a BOM shown in the exhibit. (Note that this portion of the BOM does not include the MC, which is not part of this question.)

Which additional clarification should the architect seek to determine whether this BOM fully meets the customer needs?

- A. whether the hotel wants to deploy the APs as RAPs or CAPs
- B. whether the hotel has CAT5e patch cables long enough to reach the boxes
- C. whether directional or omnidirectional external antennas work better for the APs
- D. whether the hotel already has a PoE or PoE+ source

Correct Answer: D

[Latest HPE6-A49 Dumps](#)

[HPE6-A49 VCE Dumps](#)

[HPE6-A49 Practice Test](#)