



HP0-Y51^{Q&As}

Building HP SDN and FlexNetwork Solutions

Pass HP HP0-Y51 Exam with 100% Guarantee

Free Download Real Questions & Answers **PDF** and **VCE** file from:

<https://www.passapply.com/hp0-y51.html>

100% Passing Guarantee
100% Money Back Assurance

Following Questions and Answers are all new published by HP Official Exam Center

-  **Instant Download** After Purchase
-  **100% Money Back** Guarantee
-  **365 Days** Free Update
-  **800,000+** Satisfied Customers





QUESTION 1

A company has an HP BYOD solution with these requirements:

Employees can connect their own devices to an Employees SSID, which enforces Wi-Fi Protected Access 2 (WPA2) with 802.1X.

User Access Manager (UAM) is the RADIUS server for 802.1X authentication, and it enforces EAP-TLS.

The employees will first connect to an open SSID, access a portal page, and download the proper certificates for completing 802.1X authentication.

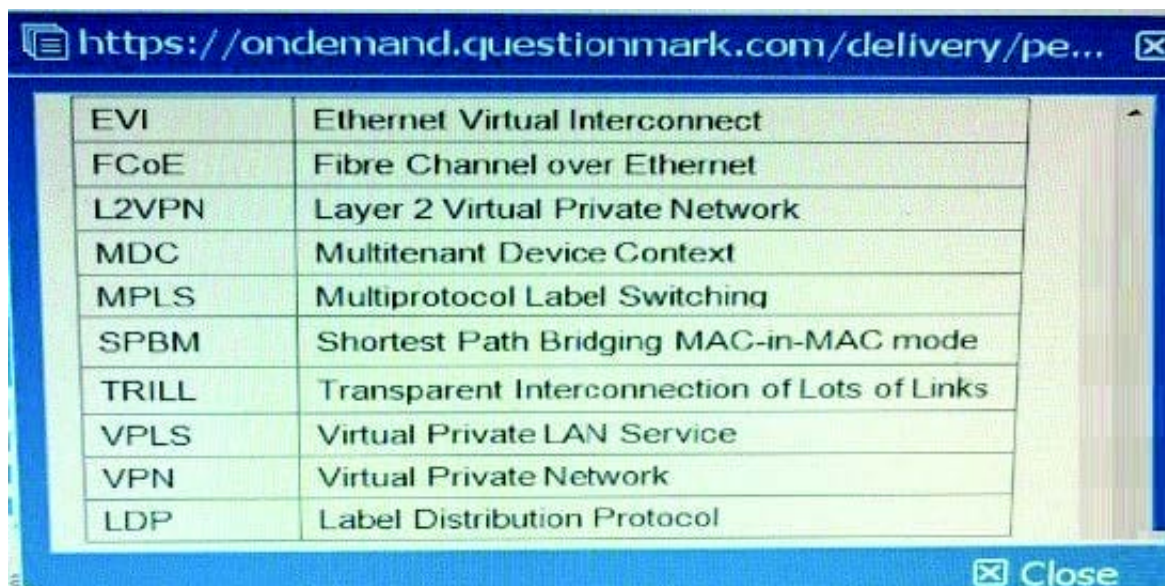
To meet these requirements, an administrator needs to deploy the correct certificate templates on UAM. What determine deploy?

- A. Whether the company uses Active Directory (AD) or Open LDAP
- B. Type of endpoint devices and the device operating systems (OS)
- C. Government regulations with which the company must comply
- D. Level of security that the company requires

Correct Answer: B

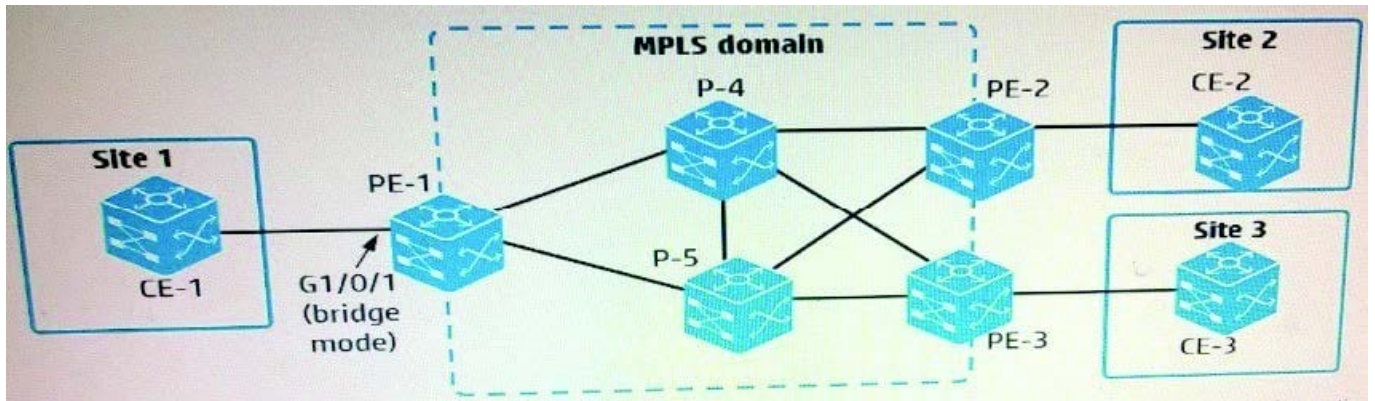
QUESTION 2

Table of acronyms



EVI	Ethernet Virtual Interconnect
FCoE	Fibre Channel over Ethernet
L2VPN	Layer 2 Virtual Private Network
MDC	Multitenant Device Context
MPLS	Multiprotocol Label Switching
SPBM	Shortest Path Bridging MAC-in-MAC mode
TRILL	Transparent Interconnection of Lots of Links
VPLS	Virtual Private LAN Service
VPN	Virtual Private Network
LDP	Label Distribution Protocol

Refer to the exhibit.



An administrator is setting up an MPLS and L2VPN virtual circuit (VC) between customer Site 1 and Site 2. The administrator is creating a global cross-connect group, which uses LDP signaling, on PE-1. Which two elements are required to do this?

- A. An AC connection (specifies a service instance on g1/0/1) and a peer (PE-2)
- B. A peer (PE-2) and a VPN instance (associated with g1/0/1)
- C. A peer (PE-2) and a VLAN ID (access VLAN or. g1/0/1)
- D. An AC connection (specifies a service instance on g1/0/1) and a VPN instance (associated with g1/0/1)

Correct Answer: CD

QUESTION 3

Table of Acronyms

Acronym	Full Name
EVI	Ethernet Virtual Interconnect
FCoE	Fibre Channel over Ethernet
L2VPN	Layer 2 Virtual Private Network
MDC	Multitenant Device Context
MPLS	Multiprotocol Label Switching
SPBM	Shortest Path Bridging MAC-in-MAC mode
TRILL	Transparent Interconnection of Lots of Links
VPLS	Virtual Private LAN Service
VPN	Virtual Private Network
LDP	Label Distribution Protocol

A company is deploying an HP VAN SDN Controller solution, which is installed with the HP Network Protector



application. The administrator configures the solution to control HP Provision switches and must choose the OpenFlow instance failover mode. Which customer requirement should cause the administrator to choose standalone mode?

- A. The solution must work with a single VAN SDN Controller rather than a team of controllers.
- B. The company requires N+2 redundancy for the VAN SDN Controller functionality and the malware protection.
- C. OpenFlow must be confined to the guest VLAN, which has the devices against which Network Protector guards the network
- D. It is vital to protect user connectivity if the controller fails, even if the network is temporarily less protected against malware

Correct Answer: A

QUESTION 4

Table of Acronyms Refer to the exhibit.

EVI	Ethernet Virtual Interconnect
FCoE	Fibre Channel over Ethernet
L2VPN	Layer 2 Virtual Private Network
MDC	Multitenant Device Context
MPLS	Multiprotocol Label Switching
SPBM	Shortest Path Bridging MAC-in-MAC mode
TRILL	Transparent Interconnection of Lots of Links
VPLS	Virtual Private LAN Service
VPN	Virtual Private Network
LDP	Label Distribution Protocol



```
#Device1 partial running-config
evi site-id 1
interface GigabitEthernet1/0/1
  port access vlan 101
  evi enable
interface vlan-interface101
  ip address 10.0.0.2 255.255.255.0
interface tunnel 1
  source 10.0.0.2
  evi network-id 1
  evi neighbor-discovery server enable
  evi neighbor-discovery client enable 10.0.2.2

#Device2 partial running-config
evi site-id 2
interface GigabitEthernet1/0/1
  port access vlan 102
  evi enable
interface vlan-interface102
  ip address 10.0.2.2 255.255.255.0
interface tunnel 1
  source 10.0.2.2
  evi network-id 2
  evi neighbor-discovery server enable
  evi neighbor-discovery client enable 10.0.0.2

#Device3 partial running-config
evi site-id 3
interface GigabitEthernet1/0/1
  port access vlan 103
  evi enable
interface vlan-interface103
  ip address 10.0.3.2 255.255.255.0
interface tunnel 1
  source 10.0.3.2
  evi network-id 3
  evi neighbor-discovery client enable 10.0.0.2
  evi neighbor-discovery client enable 10.0.2.2
```

A company has three data centers, each with a connection to a service provider network. The administrator has configured the settings shown in the exhibit, but the EVI links are not coming up. What should the administrator do to correct the problem?

- A. Change the EVI site ID on each device to match.
- B. Add destination IP addresses to the tunnel interfaces.
- C. Enable 1S-1S on the VLAN interfaces that connect to the service provider.
- D. Change the EVI network ID on each device to match.

Correct Answer: C



QUESTION 5

A company has an HP Unified Wired-Wireless controller that controls HP MultiService Mobility (MSM) APs. The network administrator wants to implement protection against rogue APs in the company's campus environment. Only APs that have approved MAC addresses should be allowed to operate and support clients. Controlled APs should send disassociation frames to prevent clients from connecting to rogue APs.

The administrator sets up APs to monitor the area and creates a permitted MAC address list with the approved AP MAC addresses. The administrator has not configured any other Intrusion Detection System (IDS) settings. Which additional step must the administrator complete?

- A. Enable a dynamic blacklist.
- B. Configure the permitted vendor and permitted SSID lists.
- C. Enable countermeasures.
- D. Deploy the permitted MAC address list as a static attack list to each controlled AP

Correct Answer: C

QUESTION 6

An HP VAN SDN Controller runs the HP Network Protector SDN Application. The application has programmed an HP Switch with flows that output the service insertion tunnel. How does the switch forward packets matching these flows to the controller?

- A. Encapsulated in a GRE tunnel
- B. Encapsulated in OpenFlow packets and transmitted over the auxiliary connection
- C. Encapsulated in an IPSec tunnel
- D. Encapsulated in OpenFlow packets and transmitted in the controller VLAN

Correct Answer: D

QUESTION 7

Table of Acronyms Exhibit 1

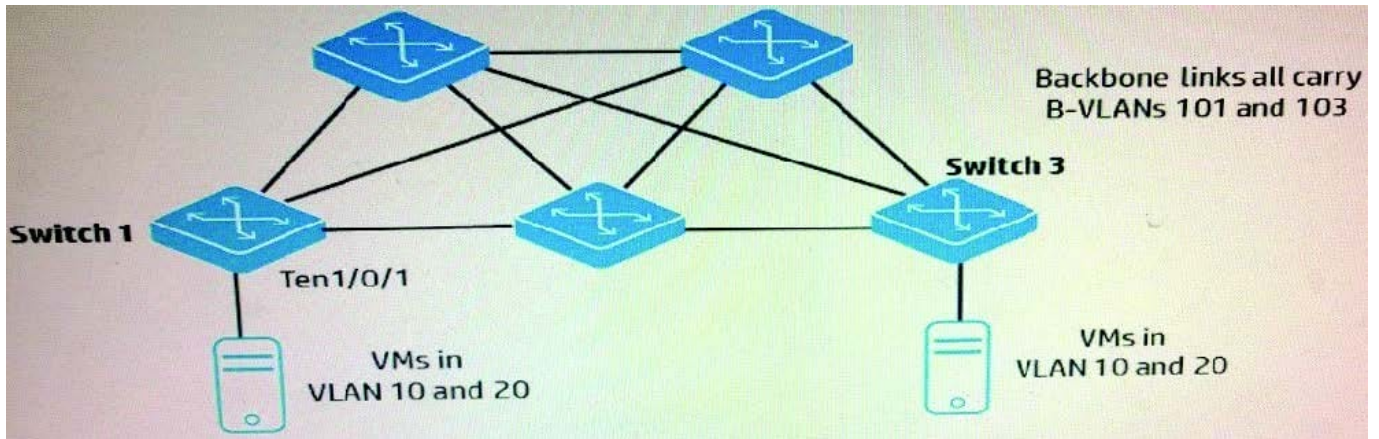


Exhibit 2 The switches shown in the exhibit are implementing SPBM. The administrator is now setting up interface ten1/0/1 to connect to a new VMware host. What is the correct port type and VLAN assignment for the interface?

```
#Portions of the running-config for switch 1

vsi 10
  spb i-sid 10
  b-vlan 101
#
vsi 20
  spb i-sid 10
  b-vlan 103

interface Ten-GigabitEthernet1/0/1
  port link-mode bridge
  service-instance 1
  encapsulation s-vid 10
  xconnect vsi 10
  service-instance 2
  encapsulation s-vid 20
  xconnect vsi 20
```

- A. Trunk port that permits VLANs 101 and 103
- B. Hybrid port that permits VLANs 201 and 203
- C. Trunk port that permits VLANs 10 and 20
- D. Access port that permits the default VLAN

Correct Answer: A

QUESTION 8



Table of Acronyms

EVI	Ethernet Virtual Interconnect
FCoE	Fibre Channel over Ethernet
L2VPN	Layer 2 Virtual Private Network
MDC	Multitenant Device Context
MPLS	Multiprotocol Label Switching
SPBM	Shortest Path Bridging MAC-in-MAC mode
TRILL	Transparent Interconnection of Lots of Links
VPLS	Virtual Private LAN Service
VPN	Virtual Private Network
LDP	Label Distribution Protocol

Which common data center requirement does an HP EVI solution meet?

- A. It enhances multi-data center solutions by extending Layer 2 connectivity across data centers connected at Layer 3.
- B. It provides network administrators with more control over and visibility into communications between virtual machines (VMs).
- C. It increases resilience and high availability within a data center transforming Layer 2 connections into a single fabric.
- D. It enhances security for communications between data centers by automatically establishing encrypted tunnels between sites.

Correct Answer: A

QUESTION 9

An administrator is customizing an HP BYOD self-registration page. The administrator does not want guests to see the identity number field. Instead the User Access Manager (UAM) server should automatically choose a valid identity number for a guest account when the guest registers.

What are the correct settings for the identity number field in the customized page? (Select three)

- A. Required
- B. Fixed



C. Not required

D. Invisible

E. Random

F. Visible

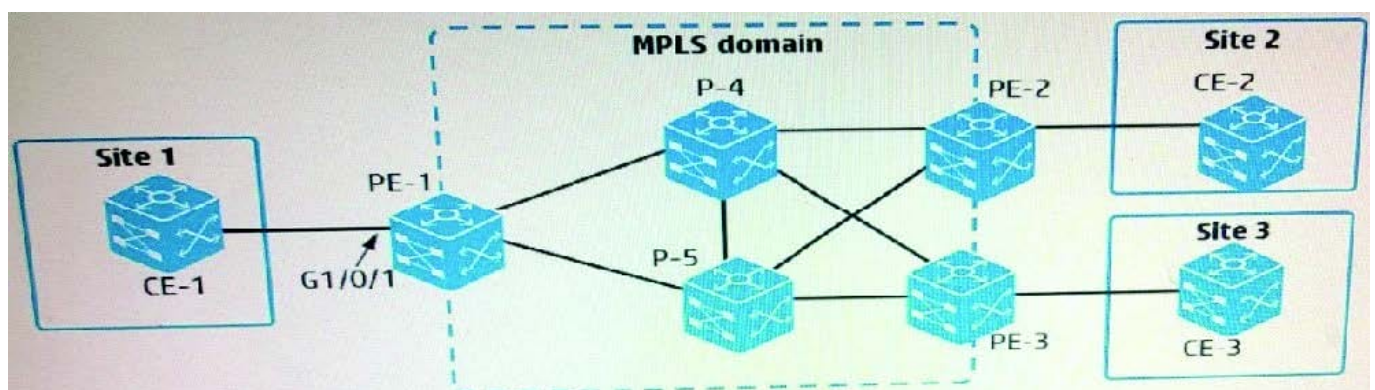
Correct Answer: AEF

QUESTION 10

Table of Acronyms

Acronym	Full Name
EVI	Ethernet Virtual Interconnect
FCoE	Fibre Channel over Ethernet
L2VPN	Layer 2 Virtual Private Network
MDC	Multitenant Device Context
MPLS	Multiprotocol Label Switching
SPBM	Shortest Path Bridging MAC-in-MAC mode
TRILL	Transparent Interconnection of Lots of Links
VPLS	Virtual Private LAN Service
VPN	Virtual Private Network
LDP	Label Distribution Protocol

Refer to the exhibit.



An administrator is setting up MPLS Layer 2 VPN connections between several customer sites:

Connection 1 = Customer site 1 to customer site 2

Connection 2 = Customer site 1 to customer site 3



On PE-1, interface GigabitEthernet1/0/1 connects to CE-1 at site 1. Which setup establishes the desired connections?

- A. CE-1 connects to CE-2 in one VLAN, which it assigns to VPN instance 1. It connects to CE-3 in a different VLAN, which it assigns to VPN instance 2. PE-1 instant places G1/0/1 in both VPN instances 1 and 2 and associates each VPN instance with a PW for one of the connections.
- B. CE-1 connects to CE-2 in one VLAN and to CE-3 in a different VLAN. PE-1 has two services instances on G1/D/1. One instance encapsulates one VLAN ID and has PW to PE-2, and the other instance encapsulates the other VLAN and has a PW to PE-3
- C. PE-1 has two policy-based routing (PBR) policies, each of which selects traffic destined to Site 2 or Site 3. The appropriate policy is applied to the PW for each connection
- D. CE-1 implements MPLS. It establishes two PWs with PE-1, one for its connection to CE-2 and one for its connection to CE-3. PE-1 maps the out label for the first PW to the in label for a PW to PE-2. It maps the labels similarly for a PW to PE-3.

Correct Answer: A

[HP0-Y51 Practice Test](#)

[HP0-Y51 Study Guide](#)

[HP0-Y51 Exam Questions](#)