



# DES-4122<sup>Q&As</sup>

Specialist - Implementation Engineer PowerEdge Version 2.0

**Pass EMC DES-4122 Exam with 100% Guarantee**

Free Download Real Questions & Answers **PDF** and **VCE** file from:

<https://www.passapply.com/des-4122.html>

100% Passing Guarantee  
100% Money Back Assurance

Following Questions and Answers are all new published by EMC  
Official Exam Center

-  **Instant Download** After Purchase
-  **100% Money Back** Guarantee
-  **365 Days** Free Update
-  **800,000+** Satisfied Customers





### QUESTION 1

A technician needs to repurpose a Dell EMC PowerEdge server. The server has dual processors with 18 cores each. The OS only "sees" 24 threads in total.

Which setting should the technician change in Processor Settings in the System BIOS?

- A. System Profile
- B. Virtualization Technology
- C. HyperThreading
- D. Number of Cores per Processor

Correct Answer: A

---

### QUESTION 2

A technician needs to update the iDRAC license on a Dell EMC PowerEdge R740 server from Express to Enterprise. The server has the following components:

1.  
2x CPUs
2.  
384 GB RAM
3.  
6x 1 TB drives
4.  
1x PSU

The server is connected to active AC, but it is powered down, and it needs to stay powered down. No errors are presently displayed.

How can the technician upgrade the license?

- A. The license cannot be upgraded on a single PSU system.
- B. Power on the server, then connect to the iDRAC and upgrade iDRAC license before powering down the server.
- C. The license cannot be upgraded because the user will not allow the server to be powered on.
- D. Connect to the iDRAC GUI and upgrade the iDRAC license while the server is powered down.

Correct Answer: A

---



### QUESTION 3

What is a systems management console solution optimized for monitoring and managing Dell enterprise and remote office hardware?

- A. SupportAssist Enterprise
- B. iSM
- C. OpenManage Essentials
- D. iDRAC9

Correct Answer: C

---

### QUESTION 4

An engineer needs to upgrade a Dell EMC PowerEdge R440 server from a single PSU to dual PSU configuration. There are unused PSU modules from PowerEdge R430 and R420 servers available, and they have the same wattage ratings.

What should the engineer do to complete the task?

- A. Add the PowerEdge R420 PSU modules to the PowerEdge R440
- B. Order a new PSU specific to the existing PowerEdge R440
- C. Add the PowerEdge R430 PSU modules to the PowerEdge R440
- D. Configure the PowerEdge R440 PSU with 1+1 configuration

Correct Answer: A

---

### QUESTION 5

What is required to use the iSM Automatic System Recovery feature?

- A. Server Administrator installed
- B. OS watchdog timer disabled
- C. Server Administrator not installed
- D. OS watchdog timer enabled

Correct Answer: B

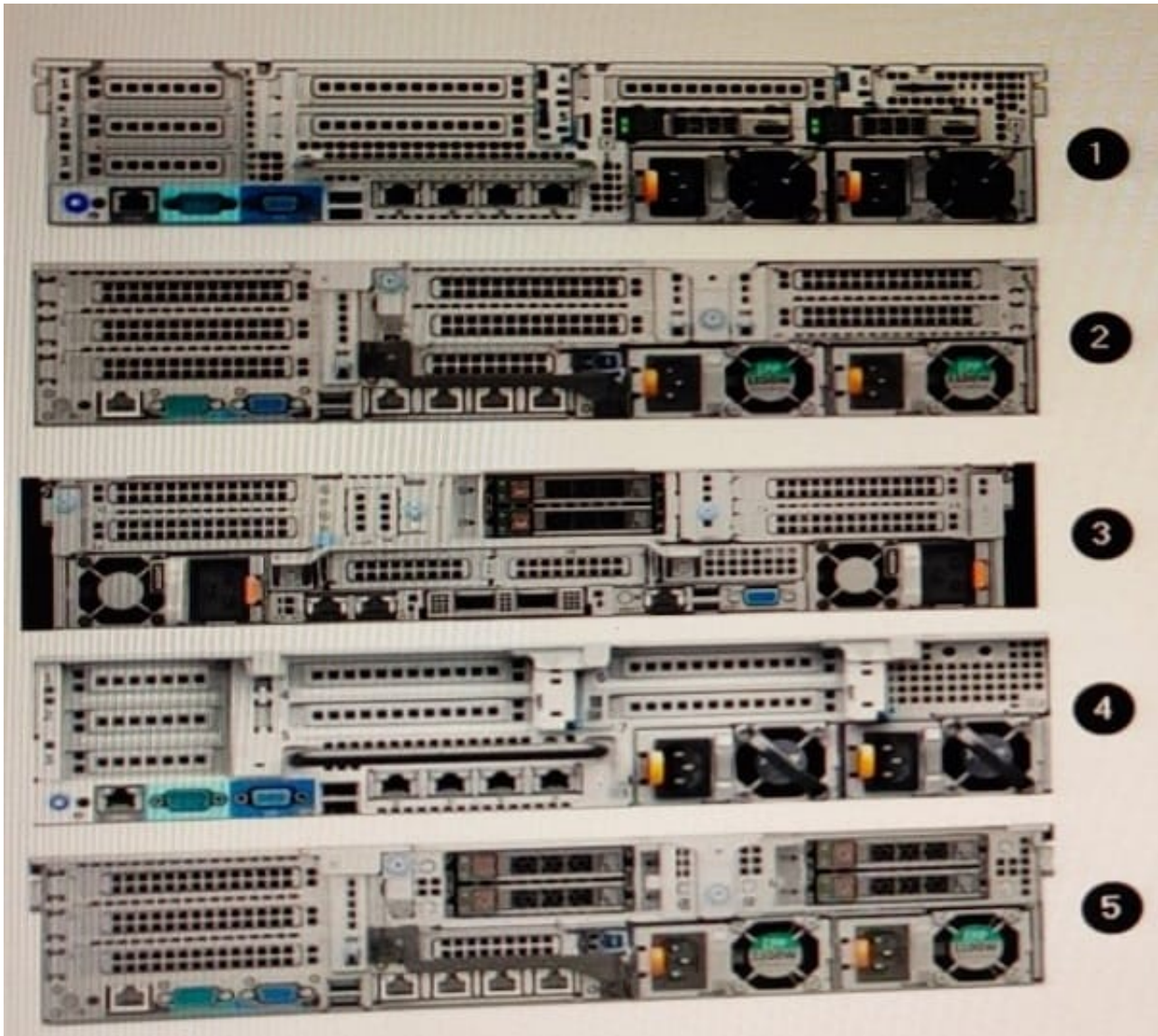
---

### QUESTION 6

DRAG DROP



Refer to the exhibit.



Match each callout to the Dell EMC PowerEdge server model shown.

Select and Place:



Callout	Model
3	R730xd
5	R740
1	R7525
4	R730
2	R740xd

Correct Answer:

Callout	Model
	4
	5
	3
	1
	2

### QUESTION 7

Starting from which Dell EMC PowerEdge server hardware generation is the Micro SD card in the IDSDM/vFlash module supported?

- A. 11G
- B. 12G
- C. 13G
- D. 14G

Correct Answer: D





### QUESTION 8

When does a customer require the Service Tag of the Dell EMC PowerEdge server?

- A. First time logging in to iDRAC
- B. First time accessing the BIOS
- C. Activating the OS
- D. Obtaining warranty information

Correct Answer: A

### QUESTION 9

An engineer is checking a newly delivered Dell EMC PowerEdge R640 server that will be deployed for a new database environment

The inventory consists of:

- 1 PowerEdge R640 Server
- 1 Hot-plug Power Supply, 750W - qty 1
- Jumper Cord - C13/C14, 4M, 250V, 10A - qty 1
- Broadcom 57412 Dual Port 10GbE SFP+ and 5720 Dual Port 1GbE BASE-T rNDC - qty 1
- SFP+ SR Optic, 10GbE - qty 2
- Dell Networking, Cable, SFP+ to SFP+, 10GbE, Copper Twinax DAC, 3 Meter - qty 2
- CAT6 Patch cable 5 Meters - qty 2

The server power configuration will be set for gnd redundancy The management switch is 1000 Base-T and the top of rack switches 10Gb

What additional component(s) is needed for this configuration?

- A. Hot-plug power supply, 750 W - qty 1
- B. Hot-plug power supply, 1100W - qty 1
- C. Dell Networking, cable, 40GbE (QSFP+) to 4 x 10GbE SFP+ passive copper breakout cable, 3 meters - qty 2
- D. C20 to C21, PDU style, 250 V, 16 Amp, 3 5 meters power cord - qty 2

Correct Answer: D

### QUESTION 10

Dell EMC PowerEdge 14G servers support which technology?

- A. Quicksync 1.0



B. Intel Boot Guard

C. AMD GuardMI

D. iDRAC8

Correct Answer: C

[DES-4122 PDF Dumps](#)

[DES-4122 Exam Questions](#)

[DES-4122 Braindumps](#)