



# C9550-605<sup>Q&As</sup>

IBM WebSphere Enterprise Service Bus V7.0 Integration Development

## Pass IBM C9550-605 Exam with 100% Guarantee

Free Download Real Questions & Answers **PDF** and **VCE** file from:

<https://www.passapply.com/c9550-605.html>

100% Passing Guarantee  
100% Money Back Assurance

Following Questions and Answers are all new published by IBM Official Exam Center

-  **Instant Download** After Purchase
-  **100% Money Back** Guarantee
-  **365 Days** Free Update
-  **800,000+** Satisfied Customers





### QUESTION 1

An integration developer is designing a new mediation to process a banking transaction. The banking transaction is provided as an input for this interface. The interface must also include a fault to indicate a system timeout failure. What type of operation is BEST for the export interface?

- A. One Way
- B. Request Only
- C. Request Response
- D. Response Only

Correct Answer: C

---

### QUESTION 2

Interface requirements for a new integration system specify that interfaces must be compliant with Web Services Interoperability (WS-I) standards. Furthermore, some of the interfaces have overloaded operations. Which of the following binding styles is appropriate?

- A. Document literal non-wrapped
- B. Document literal wrapped
- C. Document non-literal
- D. Remote Procedure Call (RPC)

Correct Answer: A

---

### QUESTION 3

Interface requirements for a new project include allowing external client applications to create, retrieve or update customer records in a backend system. Which of the following export interface models BEST implement these requirements?

- A. One interface with one operation and three inputs.
- B. One interface with three operations and one input for each operation.
- C. One interface with three operations and three inputs for each operation.
- D. Three interfaces with one operation each and one input for each operation.
- E. Three interfaces with three operations each and one input for each operation.

Correct Answer: BD

---



#### QUESTION 4

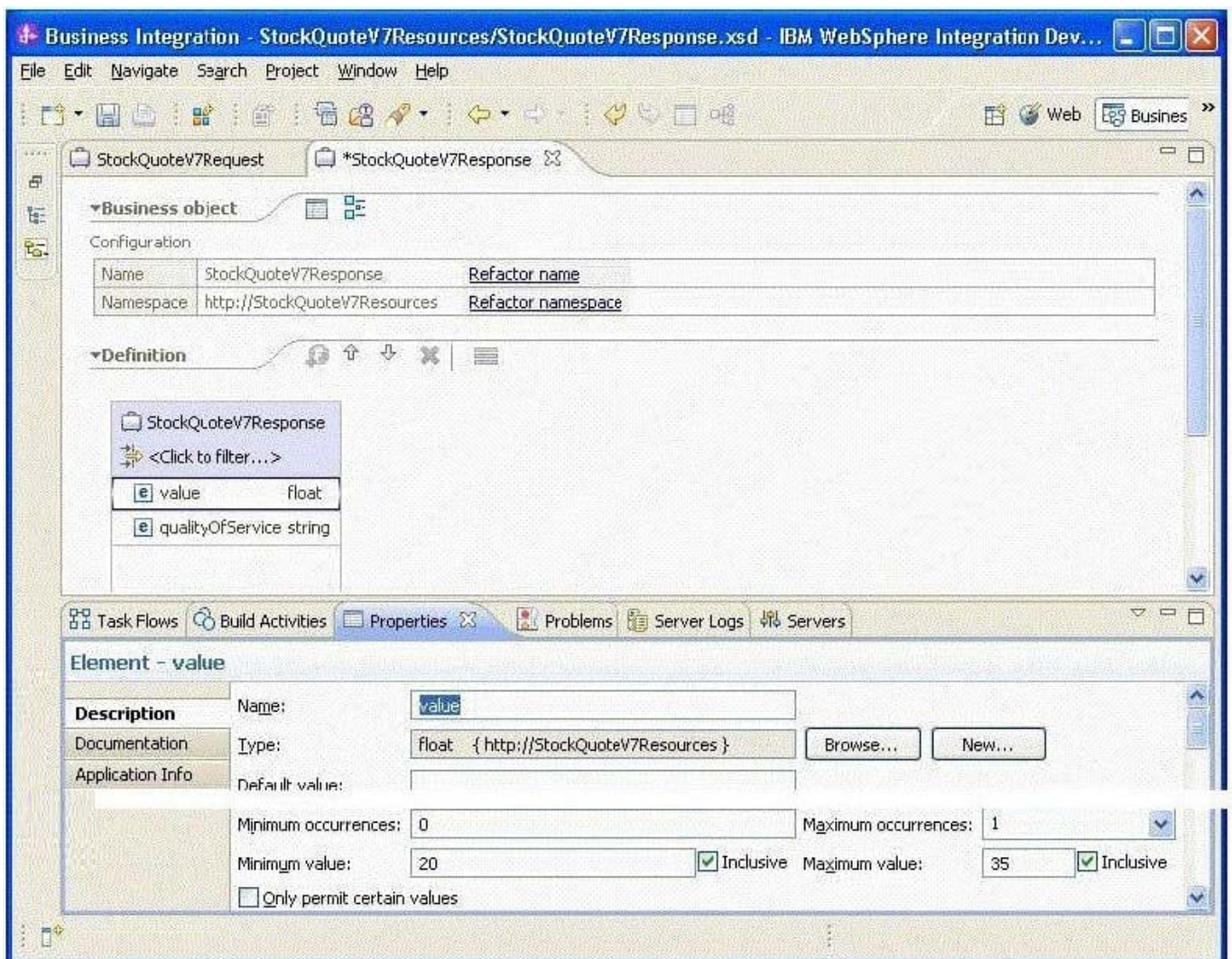
An integration developer is designing an XML map that transforms an array of elements from the input to a corresponding array of a different type to the output. Which transform type would be the most appropriate for this situation?

- A. Move
- B. Merge
- C. Append
- D. For each

Correct Answer: D

#### QUESTION 5

Refer to the Exhibit.



A business object has been defined. A restriction has been placed on the values allowed in the value parameter. If the



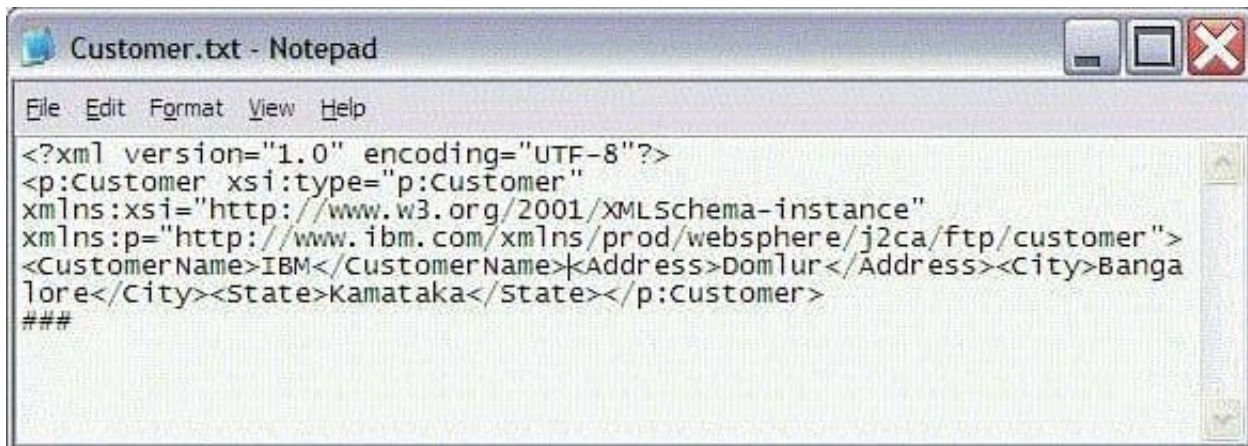
value contained in this element falls outside of the defined range, an error must be logged and the flow must stop. How should the integration developer BEST implement this requirement into a mediation flow?

- A. Use a Custom Mediation primitive to extract and check the value.
- B. Use a Message Validator primitive to ensure the value lies in the range defined.
- C. Use a Service Level Agreement (SLA) primitive to ensure that the value falls within the range.
- D. Use a Policy Resolution primitive to ensure that the value meets the policy of being in the range.

Correct Answer: B

### QUESTION 6

Refer to the Exhibit.



```
Customer.txt - Notepad
File Edit Format View Help
<?xml version="1.0" encoding="UTF-8"?>
<p:Customer xsi:type="p:Customer"
xmlns:xsi="http://www.w3.org/2001/XMLSchema-instance"
xmlns:p="http://www.ibm.com/xmlns/prod/websphere/j2ca/ftp/customer">
<CustomerName>IBM</CustomerName><Address>Domlur</Address><City>Banga
lore</City><State>Kamataka</State></p:Customer>
###
```

An integration developer is developing a module that needs to retrieve the content of a remote file via FTP. The integration developer intends to use an FTP Adapter to perform the operation. Which are the required steps to use the adapter in the correct way?

- A. Configure an FTP Inbound Adapter export with a Retrieve operation and an XML DataHandler.
- B. Configure an FTP Inbound Adapter export with a Retrieve operation and the default FTPFileBaseDataBinding data format
- C. Configure an FTP Outbound Adapter import with a Retrieve operation and an XML DataHandler.
- D. Configure an FTP Outbound Adapter import with a Retrieve operation and the defaultFTPFileBaseDataBinding data format.

Correct Answer: C

### QUESTION 7

Two integration developers are working on the same mediation module using WebSphere Integration Developer. The module code needs to be merged at the end of each day so that the developers start at the same completion level next day. Which of the following options is the correct way to achieve this with respect to the versioning support in



WebSphere Integration Developer? The developers can:

- A. continue working on their individual versions of the projects and user '\\compare projects\\' feature at the beginning of each day.
- B. continue working on their individual versions of the projects and merge them using a source control tool at the end of each day.
- C. maintain multiple versions of the projects in their respective workspaces and use the '\\merge projects\\' feature at the end of each day.
- D. maintain multiple versions of the projects in their respective workspaces and use the '\\synchronize projects\\' feature at the end of each day.

Correct Answer: B

---

### QUESTION 8

An integration developer wants to combine results from different services in a mediation flow. The developer plans to use a Fan-out/Fan-in combination to address this requirement. Which of the following statements is correct with respect to the Fan-out/Fan-in combination?

- A. The shared context is used to store responses from various services temporarily before a Fan-in is fired.
- B. The message aggregation context is used to store responses from various services temporarily before a Fan-in is fired.
- C. The Fan-out/Fan-in primitives must only be used when responses from multiple services need to be aggregated.
- D. The developer can\\'t control the stoppage of the Fan-out/Fan-in operation and the same will stop only once all the services invoked through Fan-out have responded.

Correct Answer: A

---

### QUESTION 9

An integration developer has implemented a mediation flow component and the module is failing to build correctly. Examination of the problems tab shows that the problem is occurring in the custom mediation primitive, with several Java classes reporting that they cannot be resolved to a type, such as: "Date cannot be resolved to a type" "DecimalFormat cannot be resolved to a type" "Set cannot be resolved to a type" How should the integration developer proceed in order to fix this problem?

- A. Select the module and File->Import->JAR file and import the utils.jar file.
- B. In the code of the Java Snippet, ensure the relevant imports are declared.
- C. In the Java Build path of the module, ensure that the relevant JARs are included.
- D. In the Java Imports tab of the Custom Mediation primitive, ensure the relevant imports are declared.

Correct Answer: D

---



#### QUESTION 10

An integration developer created a mediation flow component utilizing the Data Handler mediation primitive.

Which view should the integration developer use in the integration debugger to view the message as it passes through the mediation flow as part of the request?

- A. Flow view
- B. Debug view
- C. Variables view
- D. Breakpoints view

Correct Answer: B

---

#### QUESTION 11

An integration developer is tasked to automate the testing of component test projects, test suites, and test cases. Which of the following is the most recommended approach for automated testing?

- A. Use Ant scripts
- B. Use Jython scripts
- C. Use Python scripts
- D. Use serviceDeploy command

Correct Answer: A

---

#### QUESTION 12

An integration developer is debugging Common Base Event errors reported by a customer from a deployed SCA module in a stand-alone environment. Which log file should the integration developer investigate to locate events emitted from the CEI?

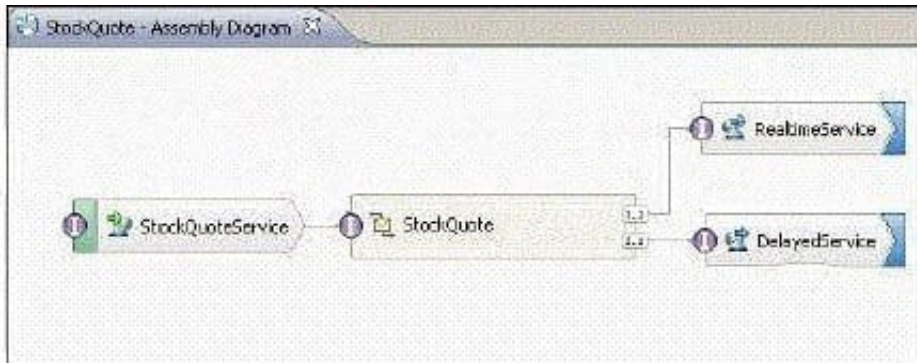
- A. SystemErr.log
- B. SystemOut.log
- C. startServer.log
- D. first failure data capture log

Correct Answer: B

---

#### QUESTION 13

Refer to the Exhibit.



The Assembly Diagram represents an existing StockQuote mediation module. The mediation module must be enhanced to create a record in a billing system whenever a stock quote is executed. What must be done to the Assembly Diagram to implement the enhancement?

- A. Add a new BillingService import with an appropriate interface. Add a new reference to the StockQuote mediation flow component. Wire the new reference to the new BillingService import.
- B. Add a new BillingService export with an appropriate interface. Add a new reference to the StockQuote mediation flow component. Wire the new reference to the new BillingService export.
- C. Add a new BillingService import with an appropriate reference. Add a new interface to the mediation flow component. Wire the new interface to the new BillingService import.
- D. Add a new BillingService export with an appropriate reference. Add a new interface to the mediation flow component. Wire the new interface to the new BillingService export.

Correct Answer: A

#### QUESTION 14

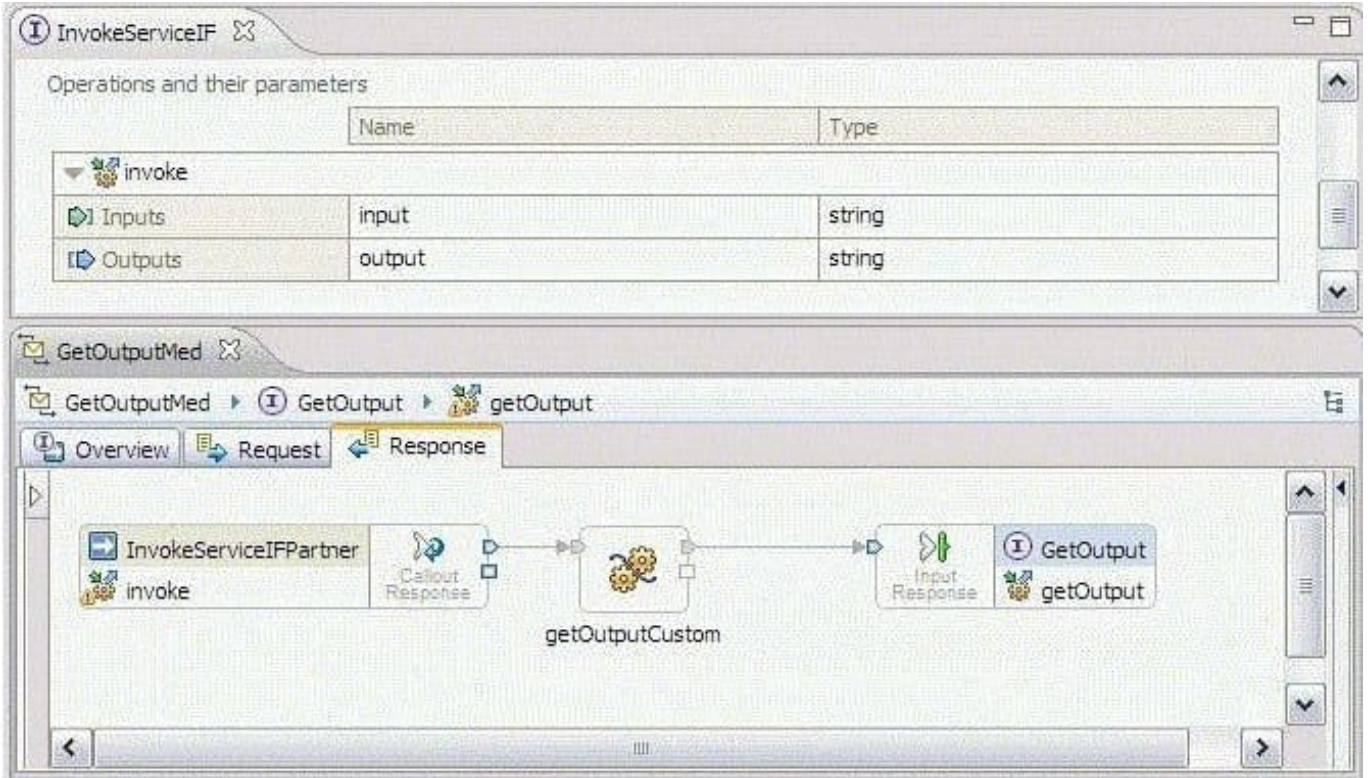
An integration developer is developing a mediation flow with multiple branches that need to be executed in a specific order. The integration developer plans to use the Flow Order mediation primitive to realize this situation. Which of the following are correct statements for the Flow Order primitive?

- A. A Flow Order primitive has one input terminal and can have any number of output terminals.
- B. A Flow Order primitive must be used at the beginning of a mediation request/response flow.
- C. Each output terminal of a Flow Order primitive is executed with an input message modified by the previous branch.
- D. The properties of a Flow Order primitive can be promoted to be configured at runtime.
- E. The output terminals are executed in the order that they are defined on the primitive, with each branch completing before the next starts.

Correct Answer: AE

#### QUESTION 15

Refer to the Exhibit.



An integration developer needs to get the 'output' value of the operation 'invoke' from within the 'getOutputCustom' primitive of the response flow shown in the exhibit. Which of the following code snippets must be used?

- A. `String output = smo.getDataObject("invoke").getString("output");`
- B. `String output = smo.getDataObject("invokeResponse").getString("output");`
- C. `String output = smo.getDataObject("body").getDataObject("invoke").getString("output");`
- D. `String output = smo.getDataObject("body").getDataObject("invokeResponse").getString("output");`

Correct Answer: D

[C9550-605 VCE Dumps](#)

[C9550-605 Study Guide](#)

[C9550-605 Exam Questions](#)