



AZ-300^{Q&As}

Microsoft Azure Architect Technologies

Pass Microsoft AZ-300 Exam with 100% Guarantee

Free Download Real Questions & Answers **PDF** and **VCE** file from:

<https://www.passapply.com/az-300.html>

100% Passing Guarantee
100% Money Back Assurance

Following Questions and Answers are all new published by Microsoft
Official Exam Center

- ⚙ **Instant Download** After Purchase
- ⚙ **100% Money Back** Guarantee
- ⚙ **365 Days** Free Update
- ⚙ **800,000+** Satisfied Customers





QUESTION 1

You create an Azure Storage account named contosostorage.

You plan to create a file share named data.

Users need to map a drive to the data file share from home computers that run Windows 10.

Which outbound port should you open between the home computers and the data file share?

- A. 80
- B. 443
- C. 445
- D. 3389

Correct Answer: C

Ensure port 445 is open: The SMB protocol requires TCP port 445 to be open; connections will fail if port 445 is blocked.

References: <https://docs.microsoft.com/en-us/azure/storage/files/storage-how-to-use-files-windows>

QUESTION 2

You need to resolve the licensing issue before you attempt to assign the license again. What should you do?

- A. From the Directory role blade, modify the directory role
- B. From the Groups blade, invite the user accounts to a new group
- C. From the Profile blade, modify the usage location
- D. <https://www.certbus.com/az-300.html>

Correct Answer: C

Explanation:

License cannot be assigned to a user without a usage location specified.

Scenario: Licensing Issue

You attempt to assign a license in Azure to several users and receive the following error message: "Licenses not assigned. License agreement failed for one user."

You verify that the Azure subscription has the available licenses.

QUESTION 3



You have an Azure subscription that contains the storage accounts shown in the following table.

Name	Contains
Storagecontoso1	A blob service and a table service
Storagecontoso2	A blob service and a file service
Storagecontoso3	A queue service
Storagecontoso4	A file service and a queue service
Storagecontoso5	A table service

You enable Azure Advanced Threat Protection (ATP) for all the storage accounts.

You need to identify which storage accounts will generate Azure ATP alerts.

Which two storage accounts should you identify? Each correct answer presents part of the solution.

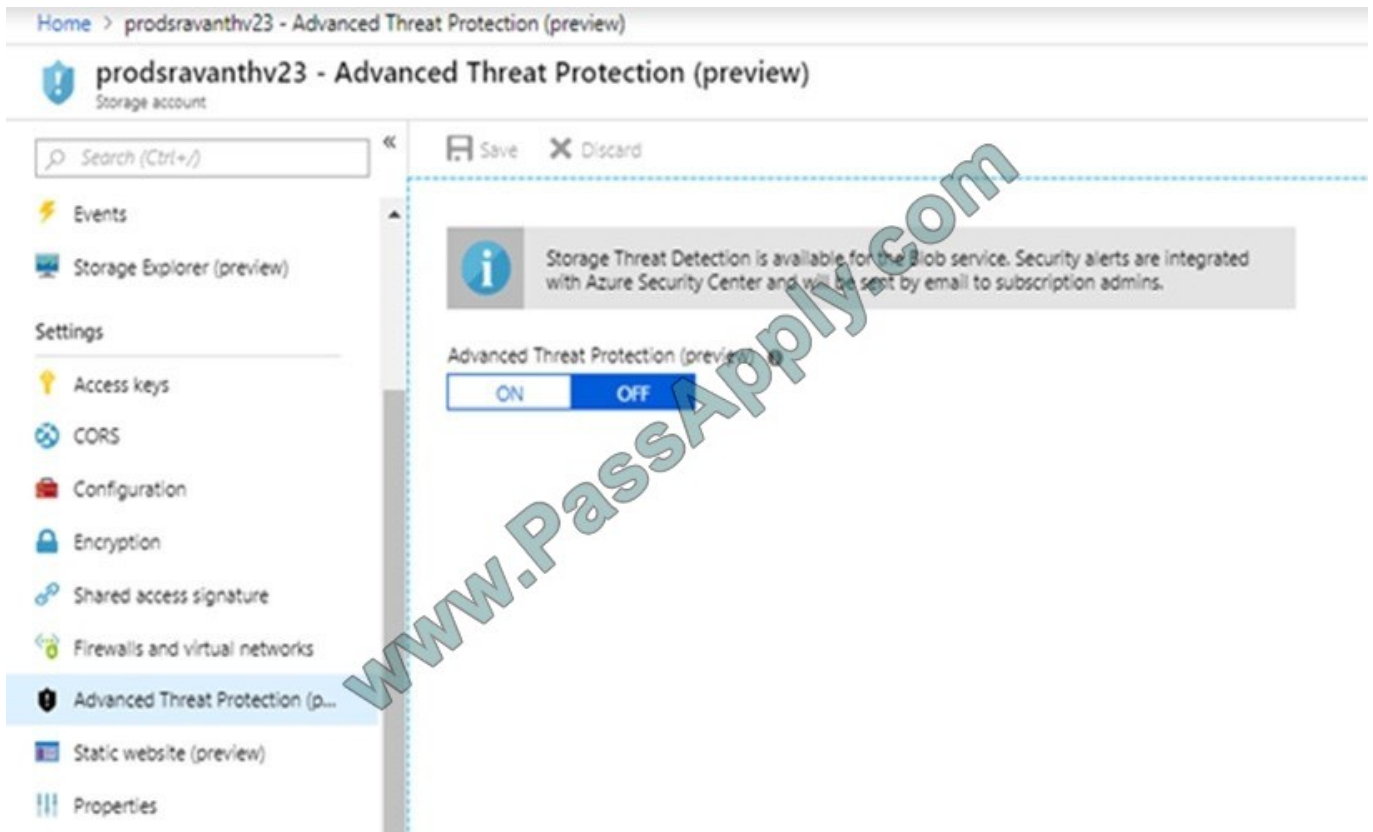
NOTE: Each correct selection is worth one point.

- A. storagecontoso1
- B. storagecontoso2
- C. storagecontoso3
- D. storagecontoso4
- E. storagecontoso5

Correct Answer: AE

Example:

Storage Threat Detection is available for the Blob Service.



References: <https://azure.microsoft.com/en-us/blog/advanced-threat-protection-for-azure-storage-now-in-public-preview/>

QUESTION 4

You are developing a back-end Azure App Service that scales based on the number of messages contained in a Service Bus queue.

A rule already exists to scale up the App Service when the average queue length of unprocessed and valid queue messages is greater than 1000.

You need to add a new rule that will continuously scale down the App Service as long as the scale up condition is not met.

How should you configure the Scale rule? To answer, select the appropriate options in the answer area.

NOTE: Each correct selection is worth one point.

Hot Area:



Answer Area

Scale Rule X

Metric source

Storage queue
Service Bus queue
Current resource
Storage queue(classic)

Resource type

Service Bus Namespaces v

Resource

MessageQueue1103 v

*Queues

itemqueue v

Criteria

*Metric name

Message Count
Active Message Count

1 minute time grain

*Time grain statistic ⓘ

Total
Maximum
Average
Count

*Operator

Greater than
Greater than or equal to
Less than
Less than or equal to

*Threshold

1000

Action

*Operation

Increase count by
Increase count to
Decrease count by
Decrease count to

*Instance count

1

*Cool down (minutes) ⓘ

5

UPDATE

DELETE



Correct Answer:



Answer Area

Scale Rule X

Metric source

Storage queue
Service Bus queue
Current resource
Storage queue(classic)

Resource type

Service Bus Namespaces v

Resource

MessageQueue1103 v

*Queues

itemqueue v

Criteria

*Metric name

Message Count
Active Message Count

1 minute time grain

*Time grain statistic ⓘ

Total
Maximum
Average
Count

*Operator

Greater than
Greater than or equal to
Less than
Less than or equal to

*Threshold

1000

Action

*Operation

Increase count by
Increase count to
Decrease count by
Decrease count to

*Instance count

1

*Cool down (minutes) ⓘ

5

UPDATE

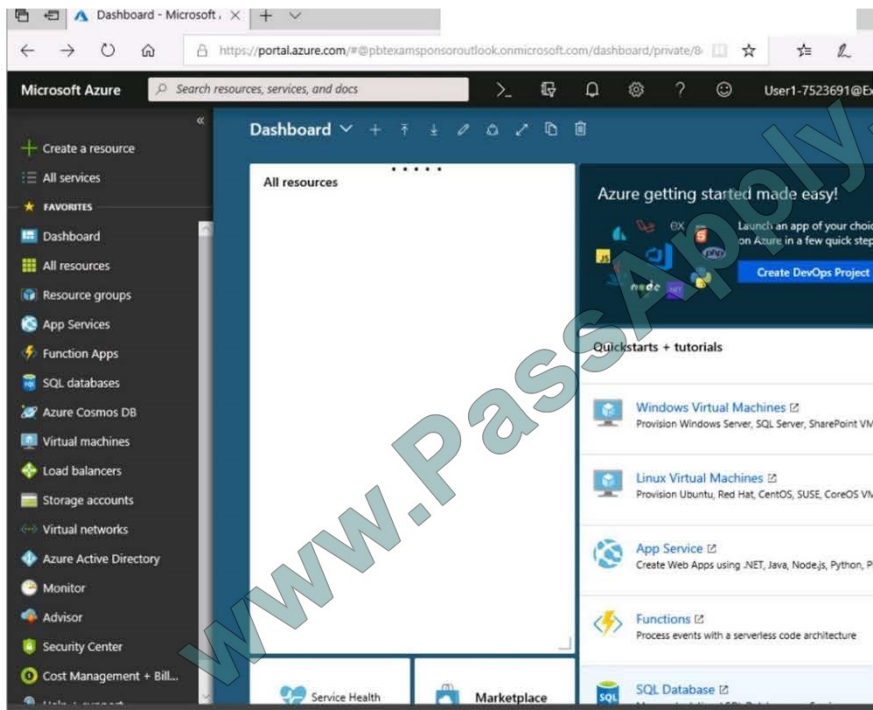
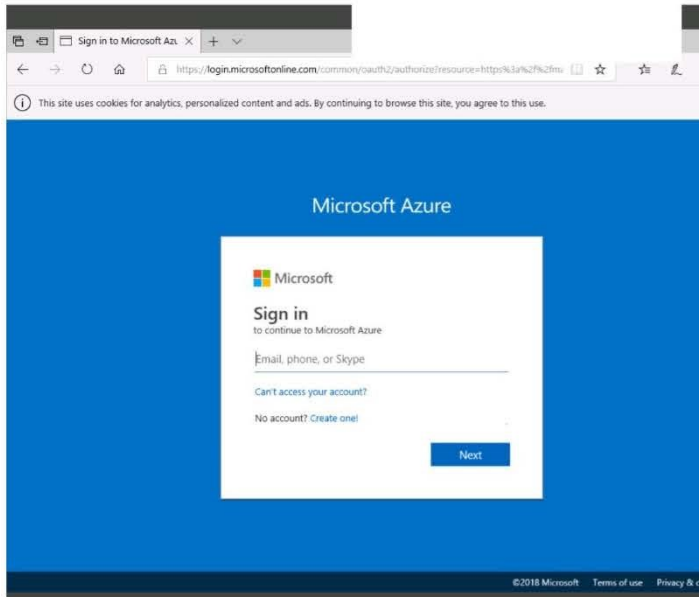
DELETE



QUESTION 5

SIMULATION

Click to expand each objective. To connect to the Azure portal, type <https://portal.azure.com> in the browser address bar.





Home > Storage accounts > Create storage account

Create storage account

✓ Validation passed

Basics Advanced Tags Review + create

BASICS

Subscription	Microsoft AZ-100 5
Resource group	corpdatalod7523690
Location	East US
Storage account name	corpdata7523690n1
Deployment model	Resource manager
Account kind	StorageV2 (general purpose v2)
Replication	Read-access geo-redundant storage (RA-GRS)
Performance	Standard
Access tier (default)	Hot

ADVANCED

Secure transfer required	Enabled
Hierarchical namespace	Disabled

Create

Previous

Next

Download a template for automation

Home > Storage accounts > Create storage account

Create storage account

Basics Advanced Tags Review + create

BASICS

Subscription	Microsoft AZ-100 5
Resource group	corpdatalod7523690
Location	East US
Storage account name	corpdata7523690n1
Deployment model	Resource manager
Account kind	StorageV2 (general purpose v2)
Replication	Read-access geo-redundant storage (RA-GRS)
Performance	Standard
Access tier (default)	Hot

ADVANCED

Secure transfer required	Enabled
Hierarchical namespace	Disabled

*** Submitting deployment...

Submitting the deployment template for resource 'corpdatalod7523690'.

Home > Microsoft.StorageAccount-20181011170335 - Overview

Microsoft.StorageAccount-20181011170335 - Overview

Deployment

Search (Ctrl+/)

Delete Cancel Redeploy Refresh

Overview

Outputs

Inputs

Template

*** Your deployment is underway

Check the status of your deployment, manage resources, or troubleshoot deployment issues. Pin this page to your dashboard to easily find it next time.



Deployment name: Microsoft.StorageAccount-20181011170335
Subscription: Microsoft AZ-100 5
Resource group: corpdatalod7523690

DEPLOYMENT DETAILS (Download)

Start time: 10/11/2018 5:04:06 PM
Duration: 17 seconds
Correlation ID: bd0806a4-d1bd-42db-be6b-55e0ec38f49b

RESOURCE	TYPE	STATUS	OPERATI...
----------	------	--------	------------

No results.

[Home](#) > [Virtual machines](#) > Create a virtual machine

Create a virtual machine

! Validation failed. Required information is missing or not valid.

[Basics](#) • [Disks](#) [Networking](#) [Management](#) [Guest config](#) [Tags](#) [Review + create](#)

PRODUCT DETAILS

Ubuntu Server 18.04 LTS

by Canonical

[Terms of use](#) | [Privacy policy](#)

Standard D2s v3

by Microsoft

[Terms of use](#) | [Privacy policy](#)

Pricing not available for this offering

View [Pricing details](#) for more information.

Subscription credits apply ⓘ

0.0960 USD/hr

[Pricing for other VM sizes](#)

TERMS

By clicking "Create", I (a) agree to the legal terms and privacy statement(s) associated with the Marketplace offering(s) listed above; (b) authorize Microsoft to bill my current payment method for the fees associated with the offering(s), with the same billing frequency as my Azure subscription; and (c) agree that Microsoft may share my contact, usage and transactional information with the provider(s) of the offering(s) for support, billing and other transactional activities. Microsoft does not provide rights for third-party offerings. See the [Azure Marketplace Terms](#) for additional details.

When you are finished performing all the tasks, click the 'Next' button.

Note that you cannot return to the lab once you click the 'Next' button. Scoring occurs in the background while you complete the rest of the exam.

Overview

The following section of the exam is a lab. In this section, you will perform a set of tasks in a live environment. While most functionality will be available to you as it would be in a live environment, some functionality (e.g., copy and paste, ability

to navigate to external websites) will not be possible by design.

Scoring is based on the outcome of performing the tasks stated in the lab. In other words, it doesn't matter how you accomplish the task, if you successfully perform it, you will earn credit for that task.

Labs are not timed separately, and this exam may have more than one lab that you must complete. You can use as much time as you would like to complete each lab. But, you should manage your time appropriately to ensure that you are

able to complete the lab(s) and all other sections of the exam in the time provided.



Please note that once you submit your work by clicking the Next button within a lab, you will NOT be able to return to the lab.

To start the lab

You may start the lab by clicking the Next button.

You need to deploy an Azure load balancer named ib1016 to your Azure subscription. The solution must meet the following requirements:

Support the load balancing of IP traffic from the Internet to Azure virtual machines connected to VNET1016\subnet0.

Provide a Service Level Agreement (SLA) of 99,99 percent availability for the Azure virtual machines.

Minimize Azure-related costs.

What should you do from the Azure portal?

To complete this task, you do NOT need to wait for the deployment to complete. Once the deployment starts in Azure, you can move to the next task.

Correct Answer:

QUESTION 6

You are developing a stateful service to deploy to Azure Service Fabric. You plan to implement the RunAsync method.

You need to implement the methods to interface with an instance of the IReliable dictionary interface to increment a count each time the service is called- The first time the service is called, you must initialize the count to 1 if it does not yet

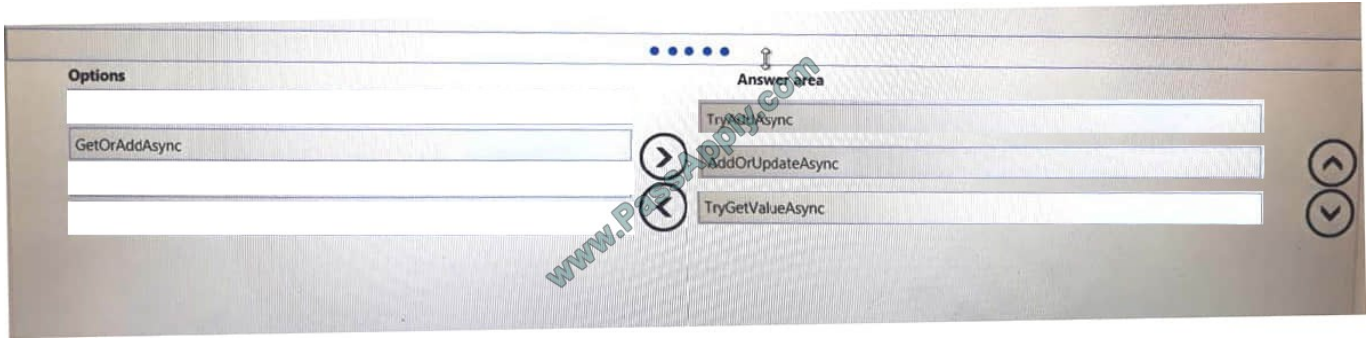
exist and then update it by one each time it is called.

Which three methods should you run in sequence? To answer, move the appropriate methods from the list of methods to the answer area and arrange them in the correct order.

Select and Place:



Correct Answer:

**QUESTION 7****HOTSPOT**

You have an Azure Active Directory (Azure AD) tenant that contains three global administrators named Admin1, Admin2, and Admin3.

The tenant is associated to an Azure subscription. Access control for the subscription is configured as shown in the Access control exhibit. (Click the Exhibit tab.)

NAME	TYPE	ROLE	SCOPE	OWNER
Admin3 Admin3@contltd...	User	Owner	Service administ...	This resource ...

You sign in to the Azure portal as Admin1 and configure the tenant as shown in the Tenant exhibit. (Click the Exhibit tab.)



 Save  Discard

***Name**

Country or region

United States

Location

United States datacenters

Notification language

English 

Global admin can manage Azure Subscriptions and Management Groups

☒ YES ☐ NO

Directory ID



Technical contact

Global privacy contact

Privacy statement URL

For each of the following statement, select Yes if the statement is true. Otherwise, select No.

NOTE: Each correct selection is worth one point. Hot Area:

Hot Area:



Statements	Yes	No
Admin1 can add Admin2 as an owner of the subscription.	<input type="checkbox"/>	<input type="checkbox"/>
Admin2 can add Admin1 as an owner of the subscription.	<input type="checkbox"/>	<input type="checkbox"/>
Admin2 can create a resource group in the subscription.	<input type="checkbox"/>	<input type="checkbox"/>

Correct Answer:

Statements	Yes	No
Admin1 can add Admin2 as an owner of the subscription.	<input checked="" type="checkbox"/>	<input type="checkbox"/>
Admin2 can add Admin1 as an owner of the subscription.	<input type="checkbox"/>	<input checked="" type="checkbox"/>
Admin2 can create a resource group in the subscription.	<input type="checkbox"/>	<input checked="" type="checkbox"/>

QUESTION 8

You create the following Azure role definition.

```
{  
  "Name": "Role1",  
  "Id": "80808080-8080-8080-8080-808080808080",  
  "IsCustom": false,  
  "Description": "",  
  "Actions": [  
    "Microsoft.Storage/*/*read",  
    "Microsoft.Network/*/*read",  
    "Microsoft.Compute/*/*read",  
    "Microsoft.Compute/virtualMachines/start/action",  
    "Microsoft.Compute/virtualMachines/restart/action",  
    "Microsoft.Authorization/*/*read"],  
  "NotActions": [],  
  "DataActions": [],
```



```
"NotDataActions": [],  
"AssignableScopes": []  
}
```

You need to create Role1 by using the role definition.

Which two values should you modify before you create Role1? Each correct answer presents part of solution.

NOTE: Each correct selection is worth one point.

- A. IsCustom
- B. DataActions
- C. Id
- D. AssignableScopes
- E. Description

Correct Answer: AD

Part of example:

```
"IsCustom": true,  
"AssignableScopes": [  
  "/subscriptions/{subscriptionId1}",  
  "/subscriptions/{subscriptionId2}",  
  "/subscriptions/{subscriptionId3}"
```

The following shows what a custom role looks like as displayed in JSON format. This custom role can be used for monitoring and restarting virtual machines.

```
{  
  "Name": "Virtual Machine Operator",  
  "Id": "88888888-8888-8888-8888-888888888888",  
  "IsCustom": true,  
  "Description": "Can monitor and restart virtual machines.",  
  "Actions": [  
    "Microsoft.Storage/*/*read",  
    "Microsoft.Network/*/*read",  
    "Microsoft.Compute/*/*read",
```




```
"Microsoft.Compute/virtualMachines/start/action",  
"Microsoft.Compute/virtualMachines/restart/action",  
"Microsoft.Authorization/*/read",  
"Microsoft.ResourceHealth/availabilityStatuses/read",  
"Microsoft.Resources/subscriptions/resourceGroups/read",  
"Microsoft.Insights/alertRules/*",  
"Microsoft.Insights/diagnosticSettings/*",  
"Microsoft.Support/*"  
],  
"NotActions": [],  
"DataActions": [],  
"NotDataActions": [],  
"AssignableScopes": [  
  "/subscriptions/{subscriptionId1}",  
  "/subscriptions/{subscriptionId2}",  
  "/subscriptions/{subscriptionId3}"  
]  
}
```

References:

<https://docs.microsoft.com/en-us/azure/role-based-access-control/custom-roles>

QUESTION 9

You have two Azure Active Directory (Azure AD) tenants named contoso.com and fabrikam.com.

You have a Microsoft account that you use to sign in to both tenants.

You need to configure the default sign-in tenant for the Azure portal.

What should you do?

- A. From the Azure portal, configure the portal settings
- B. From the Azure portal, change the directory
- C. From Azure Cloud Shell, run Set-AzureRmContext



D. From Azure Cloud Shell, run Set-AzureRmSubscription

Correct Answer: B

Change the subscription directory in the Azure portal.

The classic portal feature Edit Directory, that allows you to associate an existing subscription to your Azure Active Directory (AAD), is now available in Azure portal. It used to be available only to Service Admins with Microsoft accounts, but

now it's available to users with AAD accounts as well.

To get started:

1.

Go to Subscriptions.

2.

Select a subscription.

3.

Select Change directory. Incorrect Answers:

C: The Set-AzureRmContext cmdlet sets authentication information for cmdlets that you run in the current session. The context includes tenant, subscription, and environment information.

References: <https://azure.microsoft.com/en-us/updates/edit-directory-now-in-new-portal/>

QUESTION 10

Note: This question is part of a series of questions that present the same scenario. Each question in the series contains a unique solution.

Determine whether the solution meets the stated goals.

You have the following resource groups:

Resource group	Comments
DevServer_WestCentralUS	This resource group is located in the West Central US region and contains a single virtual machine named DevServer. DevServer is connected to a private subnet in an Azure Virtual Network that has no internet access.
Workstation_EastUs	This resource group is located in the East US region and contains a virtual machine named DevWorkstation. DevWorkstation is connected to a subnet in a Virtual Network and is configured with a public IP address. A network security group has been configured to allow public incoming remote desktop protocol (RDP) connections to the DevWorkstation.



Developers must connect to DevServer only through DevWorkstation. To maintain security, DevServer must not accept connections from the internet.

You need to create a private connection between the DevWorkstation and DevServer.

Solution: Configure a public IP address on DevServer_WestCentral. Configure the Network Security Group to allow all incoming ports.

Does the solution meet the goal?

A. Yes

B. NO

Correct Answer: A

QUESTION 11

You have a virtual network named VNet1 as shown in the exhibit. (Click the Exhibit tab.)

Refresh Move Delete

Resource group (change)
Production

Location
West US

Subscription (change)
Production subscription

Subscription ID
14d26092-8e42-4ea7-b770-9dcef70fb1ea

Tags (change)
Click here to add tags

Address space
10.2.0.0/16

DNS servers
Azure provided DNS service

Connected devices

Search connected devices

DEVICE	TYPE	IP ADDRESS	SUBNET
No results.			

No devices are connected to VNet1.

You plan to peer VNet1 to another virtual network named VNet2 in the same region. VNet2 has an address space of 10.2.0.0/16.

You need to create the peering.

What should you do first?

A. Add a gateway subnet to VNet1.

B. Create a subnet on VNet1 and VNet2

C. Modify the address space of VNet1



D. Configure a service endpoint on VNet2

Correct Answer: C

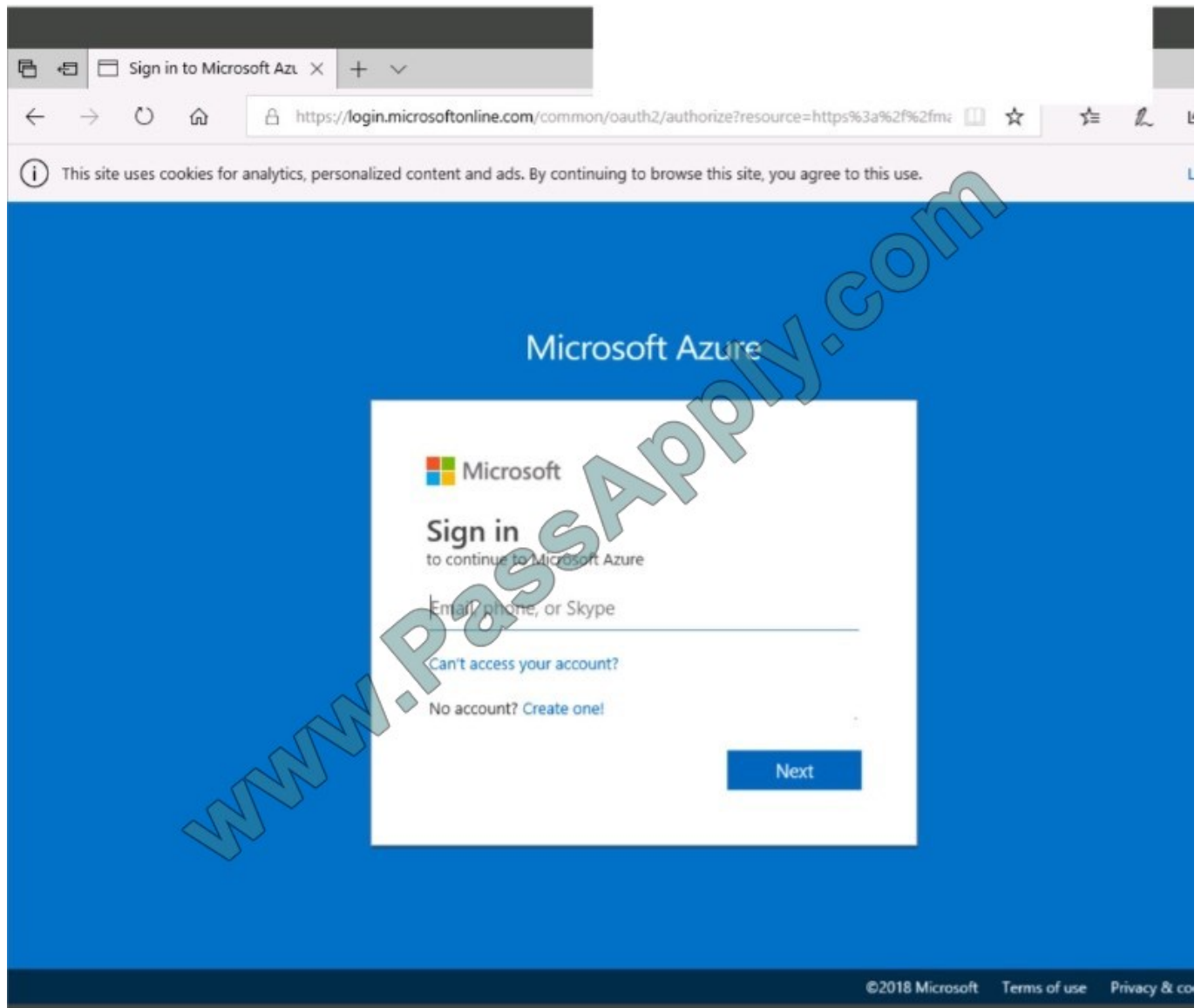
The virtual networks you peer must have non-overlapping IP address spaces. The exhibit indicates that VNet1 has an address space of 10.2.0.0/16, which is the same as VNet2, and thus overlaps. We need to change the address space for VNet1.

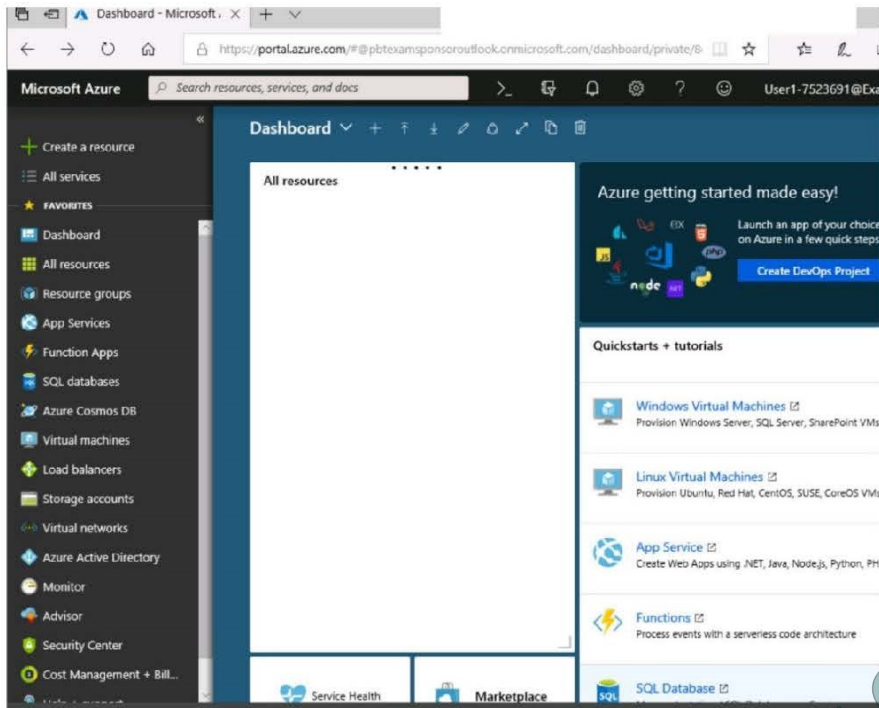
References: <https://docs.microsoft.com/en-us/azure/virtual-network/virtual-network-manage-peering#requirements-and-constraints>

QUESTION 12

SIMULATION

Click to expand each objective. To connect to the Azure portal, type <https://portal.azure.com> in the browser address bar.





Home > Storage accounts > Create storage account

Create storage account

✓ Validation passed

Basics Advanced Tags Review + create

BASICS

Subscription	Microsoft AZ-100 5
Resource group	corpdatalod7523690
Location	East US
Storage account name	corpdata7523690n1
Deployment model	Resource manager
Account kind	StorageV2 (general purpose v2)
Replication	Read-access geo-redundant storage (RA-GRS)
Performance	Standard
Access tier (default)	Hot

ADVANCED

Secure transfer required	Enabled
Hierarchical namespace	Disabled

Create Previous Next Download a template for automation



Home > Storage accounts > Create storage account

Create storage account

*** Submitting deployment...
Submitting the deployment template for resource 'corpdata7523690'.

Basics Advanced Tags Review + create

BASICS

Subscription	Microsoft AZ-100 5
Resource group	corpdata7523690
Location	East US
Storage account name	corpdata7523690n1
Deployment model	Resource manager
Account kind	StorageV2 (general purpose v2)
Replication	Read-access geo-redundant storage (RA-GRS)
Performance	Standard
Access tier (default)	Hot

ADVANCED

Secure transfer required	Enabled
Hierarchical namespace	Disabled

Home > Microsoft.StorageAccount-20181011170335 - Overview

Microsoft.StorageAccount-20181011170335 - Overview

Deployment

Search (Ctrl+F) Delete Cancel Redeploy Refresh

Overview

Outputs Inputs Template

*** Your deployment is underway

Check the status of your deployment, manage resources, or troubleshoot deployment issues. Pin this page to your dashboard to easily find it next time.

Deployment name: Microsoft.StorageAccount-20181011170335
Subscription: Microsoft AZ-100 5
Resource group: corpdata7523690

[DEPLOYMENT DETAILS \(Download\)](#)

Start time: 10/11/2018 5:04:06 PM
Duration: 17 seconds
Correlation ID: bd0806a4-d1bd-42db-be6b-55e0ec38f49b

RESOURCE	TYPE	STATUS	OPERATI...
No results.			

Home > Virtual machines > Create a virtual machine

Create a virtual machine

Validation failed. Required information is missing or not valid.

Basics • Disks Networking Management Guest config Tags Review + create

PRODUCT DETAILS

Ubuntu Server 18.04 LTS by Canonical Terms of use Privacy policy	Pricing not available for this offering View Pricing details for more information.
Standard D2s v3 by Microsoft Terms of use Privacy policy	Subscription credits apply ⓘ 0.0960 USD/hr Pricing for other VM sizes

TERMS

By clicking "Create", I (a) agree to the legal terms and privacy statement(s) associated with the Marketplace offering(s) listed above; (b) authorize Microsoft to bill my current payment method for the fees associated with the offering(s), with the same billing frequency as my Azure subscription; and (c) agree that Microsoft may share my contact, usage and transactional information with the provider(s) of the offering(s) for support, billing and other transactional activities. Microsoft does not provide rights for third-party offerings. See the [Azure Marketplace Terms](#) for additional details.



When you are finished performing all the tasks, click the 'Next' button.

Note that you cannot return to the lab once you click the 'Next' button. Scoring occurs in the background while you complete the rest of the exam.

Overview The following section of the exam is a lab. In this section, you will perform a set of tasks in a live environment. While most functionality will be available to you as it would be in a live environment, some functionality (e.g., copy and paste, ability to navigate to external websites) will not be possible by design.

Scoring is based on the outcome of performing the tasks stated in the lab. In other words, it doesn't matter how you accomplish the task, if you successfully perform it, you will earn credit for that task.

Labs are not timed separately, and this exam may have more than one lab that you must complete. You can use as much time as you would like to complete each lab. But, you should manage your time appropriately to ensure that you are

able to complete the lab(s) and all other sections of the exam in the time provided.

Please note that once you submit your work by clicking the Next button within a lab, you will NOT be able to return to the lab.

To start the lab

You may start the lab by clicking the Next button.

Another administrator attempts to establish connectivity between two virtual networks named VNET1 and VNET2. The administrator reports that connections across the virtual networks fail.

You need to ensure that network connections can be established successfully between VNET1 and VNET2 as quickly as possible.

What should you do from the Azure portal?

Correct Answer: See solution below.

You can connect one VNet to another VNet using either a Virtual network peering, or an Azure VPN Gateway.

To create a virtual network gateway

Step 1: In the portal, on the left side, click +Create a resource and type 'virtual network gateway' in search. Locate Virtual network gateway in the search return and click the entry. On the Virtual network gateway page, click Create at the bottom of the page to open the Create virtual network gateway page.

Step 2: On the Create virtual network gateway page, fill in the values for your virtual network gateway.

Create virtual network gateway

* Name

Gateway type ⓘ

☒ VPN ☐ ExpressRoute

VPN type ⓘ

☒ Route-based ☐ Policy-based

* SKU ⓘ

VpnGw1

☐ Enable active-active mode ⓘ

* Virtual network ⓘ

Choose a virtual network

>

* Public IP address ⓘ

☒ Create new ☐ Use existing

^ Configure public IP address

SKU

* Assignment

☒ Dynamic ☐ Static

☐ Configure BGP ASN ⓘ

* Subscription

Windows Azure Internal Consumption

Resource group ⓘ

-

* Location ⓘ

Create

Automation options



Name: Name your gateway. This is not the same as naming a gateway subnet. It's the name of the gateway object you are creating.

Gateway type: Select VPN. VPN gateways use the virtual network gateway type VPN.

Virtual network: Choose the virtual network to which you want to add this gateway. Click Virtual network to open the 'Choose a virtual network' page. Select the VNet. If you don't see your VNet, make sure the Location field is pointing to the region in which your virtual network is located.

Gateway subnet address range: You will only see this setting if you did not previously create a gateway subnet for your virtual network. If you previously created a valid gateway subnet, this setting will not appear.

Step 4: Select Create New to create a Gateway subnet.

Add subnet

RMVNet

* Name
GatewaySubnet

* Address range (CIDR block) ⓘ
192.168.0.0/26 ✓
192.168.0.0 - 192.168.0.63 (59 + 5 Azure reserved addresses)

Route table
None >

Service endpoints
Services ⓘ
0 selected ▼

Subnet delegation
Delegate subnet to a service ⓘ
None ▼

Step 5: Click Create to begin creating the VPN gateway. The settings are validated and you'll see the "Deploying Virtual network gateway" tile on the dashboard. Creating a gateway can take up to 45 minutes. You may need to refresh your portal page to see the completed status.

References: <https://docs.microsoft.com/en-us/azure/vpn-gateway/vpn-gateway-howto-vnet-vnet-resource-manager-portal?>

[AZ-300 PDF Dumps](#)

[AZ-300 Practice Test](#)

[AZ-300 Exam Questions](#)



VCE & PDF

PassApply.com

<https://www.passapply.com/az-300.html>

2021 Latest passapply AZ-300 PDF and VCE dumps Download

To Read the [Whole Q&As](#), please purchase the [Complete Version](#) from [Our website](#).

Try our product !

100% Guaranteed Success

100% Money Back Guarantee

365 Days Free Update

Instant Download After Purchase

24x7 Customer Support

Average 99.9% Success Rate

More than 800,000 Satisfied Customers Worldwide

Multi-Platform capabilities - [Windows](#), [Mac](#), [Android](#), [iPhone](#), [iPod](#), [iPad](#), [Kindle](#)

We provide exam PDF and VCE of Cisco, Microsoft, IBM, CompTIA, Oracle and other IT Certifications.
You can view Vendor list of All Certification Exams offered:

<https://www.passapply.com/allproducts>

Need Help

Please provide as much detail as possible so we can best assist you.

To update a previously submitted ticket:



 One Year Free Update Free update is available within One Year after your purchase. After One Year, you will get 50% discounts for updating. And we are proud to boast a 24/7 efficient Customer Support system via Email.	 Money Back Guarantee To ensure that you are spending on quality products, we provide 100% money back guarantee for 30 days from the date of purchase.	 Security & Privacy We respect customer privacy. We use McAfee's security service to provide you with utmost security for your personal information & peace of mind.
---	---	--

Any charges made through this site will appear as Global Simulators Limited.

All trademarks are the property of their respective owners.

Copyright © passapply, All Rights Reserved.