



AZ-102^{Q&As}

Microsoft Azure Administrator Certification Transition

Pass Microsoft AZ-102 Exam with 100% Guarantee

Free Download Real Questions & Answers **PDF** and **VCE** file from:

<https://www.passapply.com/az-102.html>

100% Passing Guarantee
100% Money Back Assurance

Following Questions and Answers are all new published by Microsoft
Official Exam Center

-  **Instant Download** After Purchase
-  **100% Money Back** Guarantee
-  **365 Days** Free Update
-  **800,000+** Satisfied Customers





QUESTION 1

You need to prevent remote users from publishing via FTP to a function app named FunctionApplod7509087fa. Remote users must be able to publish via FTPS. What should you do from the Azure portal?

A. Check the answer in explanantion.

Correct Answer: A

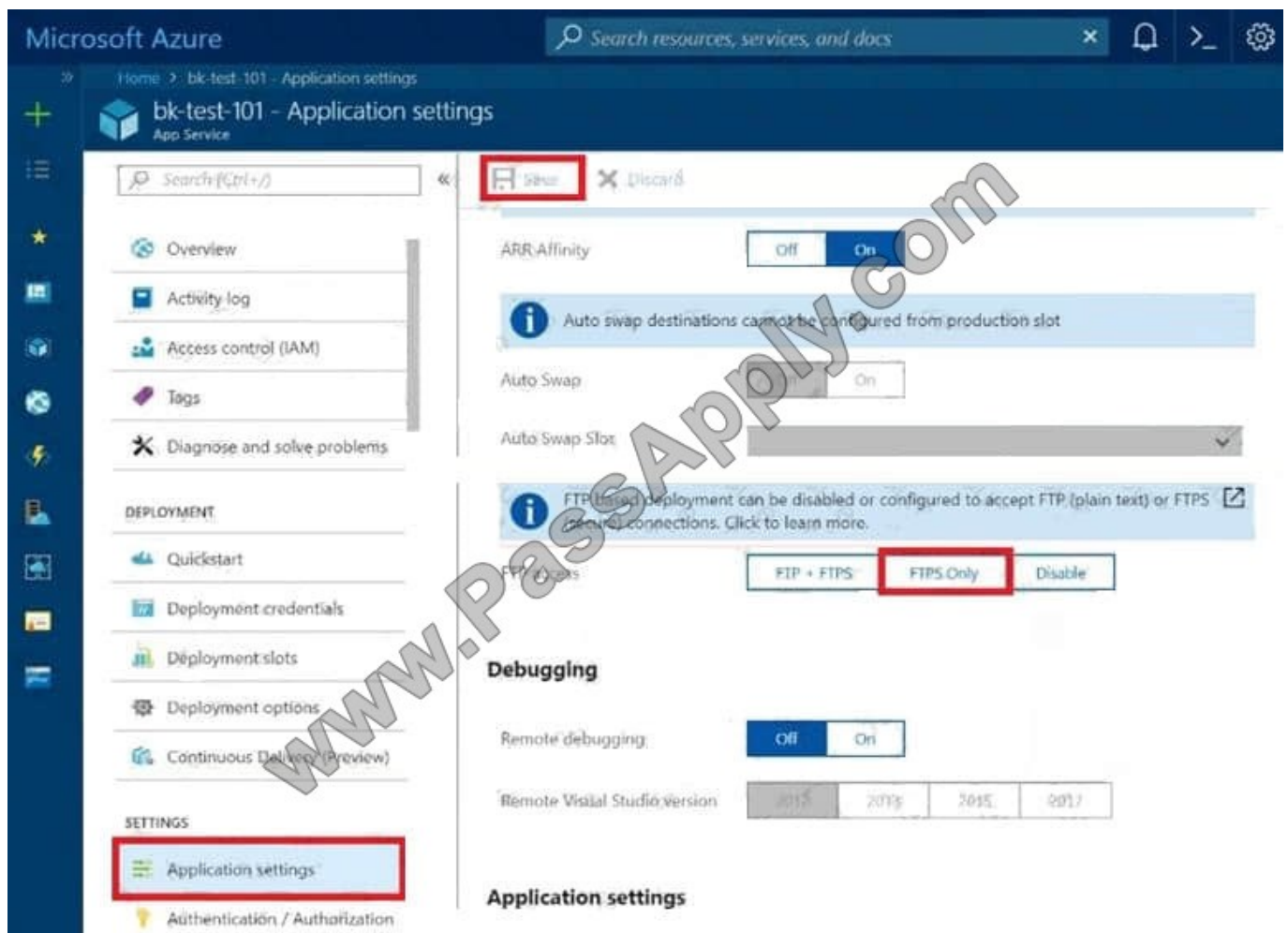
See below.

Step 1:

Locate and select the function app FunctionApplod7509087fa.

Step 2:

Select Application Settings > FTP Access, change FTP access to FTPS Only, and click Save.



References: <https://blogs.msdn.microsoft.com/appserviceteam/2018/05/08/web-apps-making-changes-to-ftp-deployments/>



QUESTION 2

Note: This question is part of a series of questions that present the same scenario. Each question in the series contains a unique solution that might meet the stated goals. Some question sets might have more than one correct solution, while

others might not have a correct solution.

After you answer a question in this section, you will NOT be able to return to it. As a result, these questions will not appear in the review screen.

You have an Azure subscription that contains 10 virtual networks. The virtual networks are hosted in separate resource groups.

Another administrator plans to create several network security groups (NSGs) in the subscription.

You need to ensure that when an NSG is created, it automatically blocks TCP port 8080 between the virtual networks.

Solution: From the Resource providers blade, you unregister the Microsoft.ClassicNetwork provider.

Does this meet the goal?

A. Yes

B. No

Correct Answer: B

Use a policy definition.

QUESTION 3

Note: This question is part of a series of questions that present the same scenario. Each question in the series contains a unique solution that might meet the stated goals. Some question sets might have more than one correct solution, while

others might not have a correct solution.

After you answer a question in this section, you will NOT be able to return to it. As a result, these questions will not appear in the review screen.

You have an Azure subscription that contains 10 virtual networks. The virtual networks are hosted in separate resource groups.

Another administrator plans to create several network security groups (NSGs) in the subscription.

You need to ensure that when an NSG is created, it automatically blocks TCP port 8080 between the virtual networks.

Solution: You create a resource lock, and then you assign the lock to the subscription.

Does this meet the goal?

A. Yes

B. No



Correct Answer: B

How can I freeze or lock my production/critical Azure resources from accidental deletion? There is way to do this with both ASM and ARM resources using Azure resource lock. References: <https://blogs.msdn.microsoft.com/azureedu/2016/04/27/using-azure-resource-manager-policy-and-azure-lock-to-control-your-azure-resources/>

QUESTION 4

Note: This question is part of a series questions that present the same scenario. Each question in the series contains a unique solution that might meet the stated goals. Some question sets might have more than one correct solution, while others might not have a correct solution.

After you answer a question in this section, you will NOT be able to return to it. As a result, these questions will not appear in the review screen.

You manage a virtual network named Vnet1 that is hosted in the West US Azure region.

VNet hosts two virtual machines named VM1 and VM2 run Windows Server.

You need to inspect all the network traffic from VM1 to VM2 for a period of three hours.

Solution: From Azure Network Watcher, you create a connection monitor.

Does this meet the goal?

- A. YES
- B. NO

Correct Answer: A

Azure Network Watcher provides tools to monitor, diagnose, view metrics, and enable or disable logs for resources in an Azure virtual network.

Capture packets to and from a VM

Advanced filtering options and fine-tuned controls, such as the ability to set time and size limitations, provide versatility. The capture can be stored in Azure Storage, on the VM's disk, or both. You can then analyze the capture file using

several standard network capture analysis tools.

Network Watcher variable packet capture allows you to create packet capture sessions to track traffic to and from a virtual machine. Packet capture helps to diagnose network anomalies both reactively and proactivity.

References:

<https://docs.microsoft.com/en-us/azure/network-watcher/network-watcher-monitoring-overview>

QUESTION 5

Note: This question is part of a series of questions that present the same scenario. Each question in the series contains a unique solution that might meet the stated goals.



Some question sets might have more than one correct solution, while others might not have a correct solution.

After you answer a question in this section, you will NOT be able to return to these questions will not appear m the review screen.

You manage a virtual network named VNet1 that is hosted in the West US Azure region.

VNet1 hosts two virtual machines named VM1 and VM2 that run Windows Server.

You need to inspect all the network traffic from VM1 to VM2 for a period of three hours.

Solution: From Azure Network Watcher, you create a packet capture.

Does this meet the goal?

- A. Yes
- B. No

Correct Answer: A

Azure Network Watcher provides tools to monitor, diagnose, view metrics, and enable or disable logs for resources in an Azure virtual network.

Capture packets to and from a VM

Advanced filtering options and fine-tuned controls, such as the ability to set time and size limitations, provide versatility. The capture can be stored in Azure Storage, on the VM's disk, or both. You can then analyze the capture file using several standard network capture analysis tools.

Network Watcher variable packet capture allows you to create packet capture sessions to track traffic to and from a virtual machine. Packet capture helps to diagnose network anomalies both reactively and proactivity.

References:

<https://docs.microsoft.com/en-us/azure/network-watcher/network-watcher-monitoring-overview>

QUESTION 6

You need to recommend an environment for the deployment of App1.

What should you recommend?

- A. a new App Service plan that uses the P3v2 pricing tier
- B. ASE1 and an App Service plan that uses the I1 pricing tier
- C. ASE1 and an App Service plan that uses the I3 pricing tier
- D. a new App Service plan that uses the S1 pricing tier

Correct Answer: B

References:



<https://docs.microsoft.com/en-us/azure/app-service/environment/app-service-app-service-environment-control-inbound-traffic>

QUESTION 7

You have an Azure subscription named Subscription1. Subscription1 contains the resource groups in the following table.

Name	Azure region	Policy
RG1	West Europe	Policy1
RG2	North Europe	Policy2
RG3	France Central	Policy3

RG1 has a web app named WebApp1. WebApp1 is located in West Europe. You move WebApp1 to RG2. What is the effect of the move?

- A. The App Service plan to WebApp1 moves to North Europe. Policy2 applies to WebApp1.
- B. The App Service plan to WebApp1 moves to North Europe. Policy1 applies to WebApp1.
- C. The App Service plan to WebApp1 remains to West Europe. Policy2 applies to WebApp1.
- D. The App Service plan to WebApp1 remains to West Europe. Policy1 applies to WebApp1.

Correct Answer: C

You can move an app to another App Service plan, as long as the source plan and the target plan are in the same resource group and geographical region. The region in which your app runs is the region of the App Service plan it's in. However, you cannot change an App Service plan's region.

References: <https://docs.microsoft.com/en-us/azure/app-service/app-service-plan-manage>

QUESTION 8

From Azure AD Privileged Identity Management, you configure the global administrators as shown in the Members exhibit. (Click the Exhibit tab.)

MEMBER	EMAIL	ASSIGNMENT TYPE	EXPIRATION
Adatum Ltd	sk180606@outlook.com	Permanent	-
User2	User2@sk180606outlook...	Eligible	-

User2 activates the Global Administrator role on July 16, 2018, at 10:00, as shown in the Activation exhibit. (Click the Exhibit tab.)

Custom activation start time
Activation start time
2018-07-16 [calendar icon] 10:00:00 AM
(UTC+01:00) Belgrade, Bratislava, Budap..▼
Activation duration (hours)
■ ■ ■ ○ ■ ■ ■ ■ ■ ■ ■ ■ ■ ■ 2
The end time of activation would be
16.7.2018 12:00:00
* Activation reason (max 500 characters)
Need permissions to manage Azure ✓

For each of the following statements, select Yes if the statement is true. Otherwise, select No. NOTE: Each correct selection is worth one point.

Hot Area:

Statements	Yes	No
User2 will be a global administrator on July 16, 2018 at 11:00.	<input type="radio"/>	<input type="radio"/>
When User2 attempts to activate the Global Administrator role, the request will activate automatically.	<input type="radio"/>	<input type="radio"/>
User2 must use multi-factor authentication to activate the Global Administrator role.	<input type="radio"/>	<input type="radio"/>

Correct Answer:

Statements	Yes	No
User2 will be a global administrator on July 16, 2018 at 11:00.	<input checked="" type="radio"/>	<input type="radio"/>
When User2 attempts to activate the Global Administrator role, the request will activate automatically.	<input checked="" type="radio"/>	<input type="radio"/>
User2 must use multi-factor authentication to activate the Global Administrator role.	<input checked="" type="radio"/>	<input type="radio"/>



QUESTION 9

You are configuring Azure Active Directory (AD) Privileged Identity Management.

You need to provide a user named Admm1 with read access to a resource group named RG1 for only one month.

The user role must be assigned immediately.

What should you do?

- A. Assign an active role.
- B. Assign an eligible role.
- C. Assign a permanently active role.
- D. Create a custom role and a conditional access policy.

Correct Answer: B

Azure AD Privileged Identity Management introduces the concept of an eligible admin. Eligible admins should be users that need privileged access now and then, but not all-day, every day. The role is inactive until the user needs access, then they complete an activation process and become an active admin for a predetermined amount of time.

References: <https://docs.microsoft.com/en-us/azure/active-directory/privileged-identity-management/pim-configure>

QUESTION 10

Note: This question is part of a series of questions that present the same scenario. Each question in the series contains a unique solution that might meet the stated goals. Some question sets might have more than one correct solution, while

others might not have a correct solution.

After you answer

a question in this section, you will NOT be able to return to it As a result, these questions will not appear in the review screen.

You have an Azure Active Directory (Azure AD) tenant named Adatum and an Azure Subscription contains a resource group named Dev.

d Subscription1. Adatum contains a group named Developers. Subscription!

You need to provide the Developers group with the ability to create Azure logic apps in the; Dev, resource group.

Solution: On Dev, you assign the Logic App Contributor role to the Developers group.

Does this meet the goal?

- A. Yes
- B. No

Correct Answer: A



The Logic App Contributor role lets you manage logic app, but not access to them. It provides access to view, edit, and update a logic app.

References:

<https://docs.microsoft.com/en-us/azure/role-based-access-control/built-in-roles>

<https://docs.microsoft.com/en-us/azure/logic-apps/logic-apps-securing-a-logic-app>

QUESTION 11

HOTSPOT

You need to recommend a solution for App1. The solution must meet the technical requirements. What should you include in the recommendation? To answer, select the appropriate options in the answer area.

NOTE: Each correct selection is worth one point.

Hot Area:

Answer Area

Number of virtual networks:

1
2
3

Number of subnets per virtual network:

1
2
3

Correct Answer:



Answer Area

Number of virtual networks:

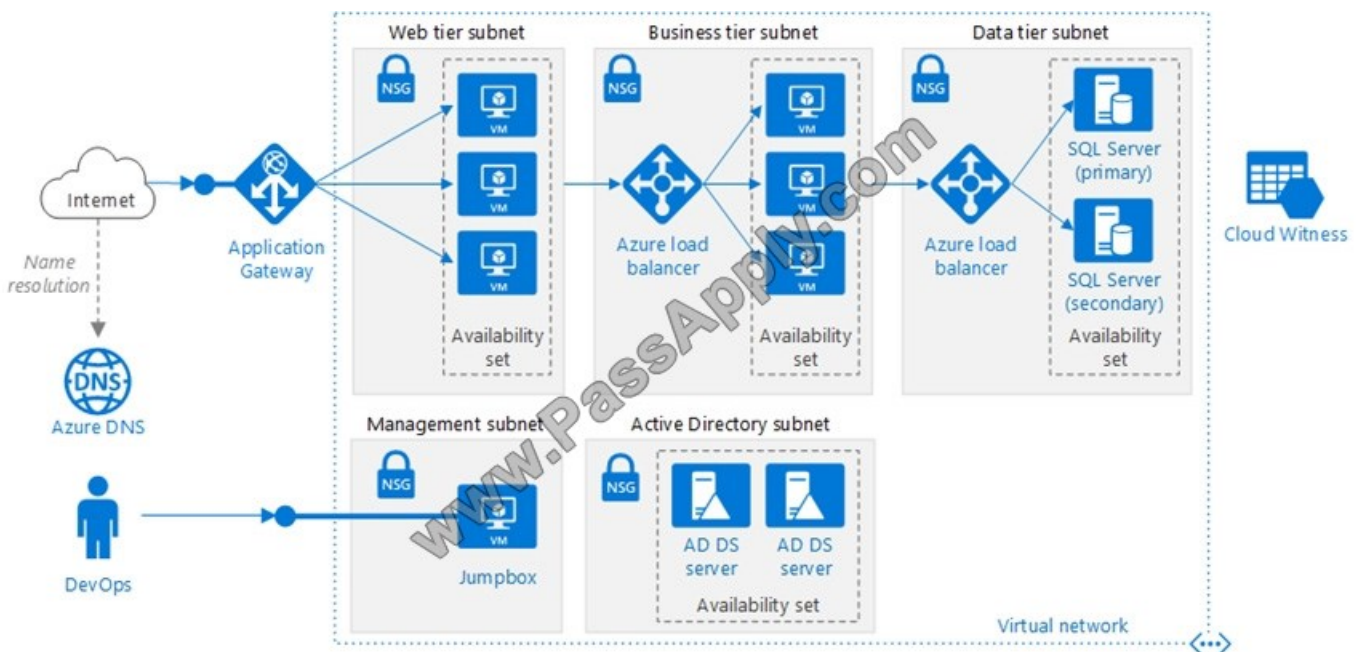
1
2
3

Number of subnets per virtual network:

1
2
3

Explanation:

This reference architecture shows how to deploy VMs and a virtual network configured for an N-tier application, using SQL Server on Windows for the data tier.



Scenario: You have a public-facing application named App1. App1 is comprised of the following three tiers:

- A SQL database
- A web front end
- A processing middle tier



Each tier is comprised of five virtual machines. Users access the web front end by using HTTPS only.

Technical requirements include:

Move all the virtual machines for App1 to Azure.

Minimize the number of open ports between the App1 tiers.

References: <https://docs.microsoft.com/en-us/azure/architecture/reference-architectures/n-tier/n-tier-sql-server>

QUESTION 12

Your company has offices in New York and Los Angeles.

You have an Azure subscription that contains an Azure virtual network named VNet1. Each office has a site-to-site VPN connection to VNet1.

Each network uses the address spaces shown in the following table.

Location	IP address space
VNet1	192.168.0.0/20
New York	10.0.0.0/16
Los Angeles	10.10.0.0/16

You need to ensure that all Internet-bound traffic from VNet1 is routed through the New York office.

What should you do? To answer, select the appropriate options in the answer area.

NOTE: Each correct selection is worth one point.

Hot Area:

In Azure, run:

<input type="checkbox"/>	New-AzureRmLocalNetworkGateway
<input type="checkbox"/>	New-AzureRmVirtualNetworkGatewayConnection
<input type="checkbox"/>	Set-AzureRmVirtualNetworkGatewayDefaultSite
<input type="checkbox"/>	

On a VPN device in the New York office, set the traffic selectors to:

<input type="checkbox"/>	0.0.0.0/0
<input type="checkbox"/>	10.0.0.0/16
<input type="checkbox"/>	192.168.0.0/20
<input type="checkbox"/>	

Correct Answer:



In Azure, run:

New-AzureRmLocalNetworkGateway
New-AzureRmVirtualNetworkGatewayConnection
Set-AzureRmVirtualNetworkGatewayDefaultSite

On a VPN device in the New York office, set the traffic selectors to:

0.0.0.0/0
10.0.0.0/16
192.168.0.0/20

Box 1: Set-AzureRmVirtualNetworkGatewayDefaultSite

The Set-AzureRmVirtualNetworkGatewayDefaultSite cmdlet assigns a forced tunneling default site to a virtual network gateway. Forced tunneling provides a way for you to redirect Internet-bound traffic from Azure virtual machines to your on-premises network; this enables you to inspect and audit traffic before releasing it. Forced tunneling is carried out by using a virtual private network (VPN) tunnel; this tunnel requires a default site, a local gateway where all the Azure Internet-bound traffic is redirected. Set-AzureRmVirtualNetworkGatewayDefaultSite provides a way to change the default site assigned to a gateway.

[AZ-102 Practice Test](#)

[AZ-102 Study Guide](#)

[AZ-102 Braindumps](#)



To Read the [Whole Q&As](#), please purchase the [Complete Version](#) from [Our website](#).

Try our product !

100% Guaranteed Success
100% Money Back Guarantee
365 Days Free Update
Instant Download After Purchase
24x7 Customer Support
Average 99.9% Success Rate
More than 800,000 Satisfied Customers Worldwide
Multi-Platform capabilities - [Windows](#), [Mac](#), [Android](#), [iPhone](#), [iPod](#), [iPad](#), [Kindle](#)

We provide exam PDF and VCE of Cisco, Microsoft, IBM, CompTIA, Oracle and other IT Certifications. You can view Vendor list of All Certification Exams offered:

<https://www.passapply.com/allproducts>

Need Help

Please provide as much detail as possible so we can best assist you.
To update a previously submitted ticket:



 <p>One Year Free Update Free update is available within One Year after your purchase. After One Year, you will get 50% discounts for updating. And we are proud to boast a 24/7 efficient Customer Support system via Email.</p>	 <p>Money Back Guarantee To ensure that you are spending on quality products, we provide 100% money back guarantee for 30 days from the date of purchase.</p>	 <p>Security & Privacy We respect customer privacy. We use McAfee's security service to provide you with utmost security for your personal information & peace of mind.</p>
---	---	--

Any charges made through this site will appear as Global Simulators Limited.
All trademarks are the property of their respective owners.
Copyright © passapply, All Rights Reserved.