



AZ-101^{Q&As}

Microsoft Azure Integration and Security

Pass Microsoft AZ-101 Exam with 100% Guarantee

Free Download Real Questions & Answers **PDF** and **VCE** file from:

<https://www.passapply.com/az-101.html>

100% Passing Guarantee
100% Money Back Assurance

Following Questions and Answers are all new published by Microsoft
Official Exam Center

-  **Instant Download** After Purchase
-  **100% Money Back** Guarantee
-  **365 Days** Free Update
-  **800,000+** Satisfied Customers





QUESTION 1

You need to add a deployment slot named staging to an Azure web app named corplod@lab.LabInstance.Idn4. The solution must meet the following requirements:

When new code is deployed to staging, the code must be swapped automatically to the production slot. Azure-related costs must be minimized.

What should you do from the Azure portal?

A. Check the answer in explanantion.

Correct Answer: A

See below.

Step 1:

Locate and open the corplod@lab.LabInstance.Idn4 web app.

1.

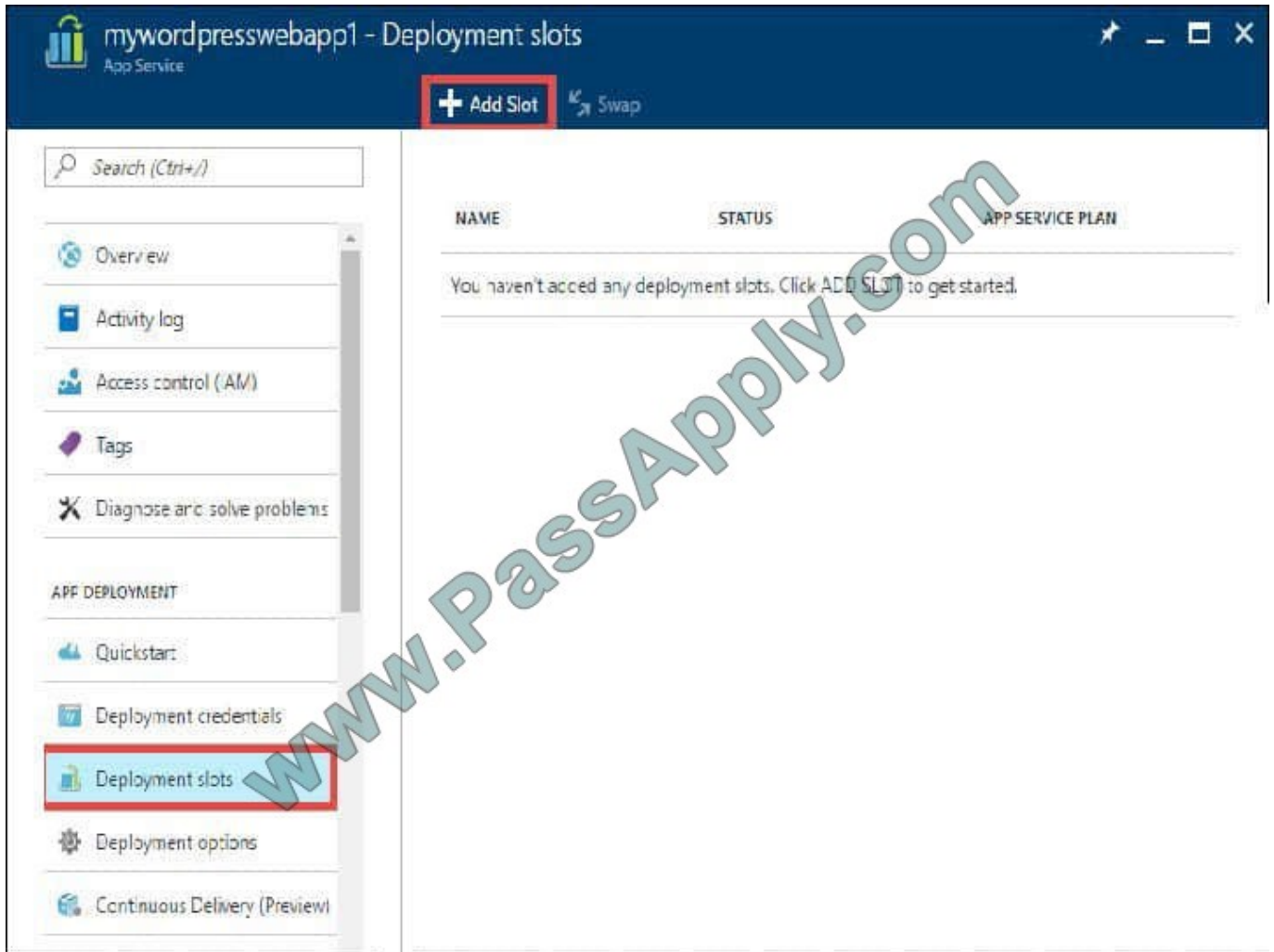
In the Azure portal, on the left navigation panel, click Azure Active Directory.

2.

In the Azure Active Directory blade, click Enterprise applications.

Step 2:

Open your app's resource blade and Choose the Deployment slots option, then click Add Slot.



Step 3:

In the Add a slot blade, give the slot a name, and select whether to clone app configuration from another existing deployment slot. Click the check mark to continue.

The first time you add a slot, you only have two choices: clone configuration from the default slot in production or not at all.

References:

<https://docs.microsoft.com/en-us/azure/app-service/web-sites-staged-publishing>

QUESTION 2

You are the global administrator for an Azure Active Directory (Azure AD) tenant named adatum.com.

You need to enable two-step verification for Azure users.

What should you do?

A. Create an Azure AD conditional access policy.



- B. Enable Azure AD Privileged Identity Management.
- C. Install and configure Azure AD Connect.
- D. Configure a playbook in Azure Security Center.

Correct Answer: A

References: <https://docs.microsoft.com/en-us/azure/active-directory/authentication/howto-mfa-getstarted>

QUESTION 3

Your company recently hired a user named janet-7509087@ExamUsers.com.

You need to ensure that janet-7509087@ ExamUsers.com can connect to load balancer named Web-LAB. The solution must ensure that janet-7509087@ ExamUsers.com can modify the backend pools.

What should you do from the Azure portal?

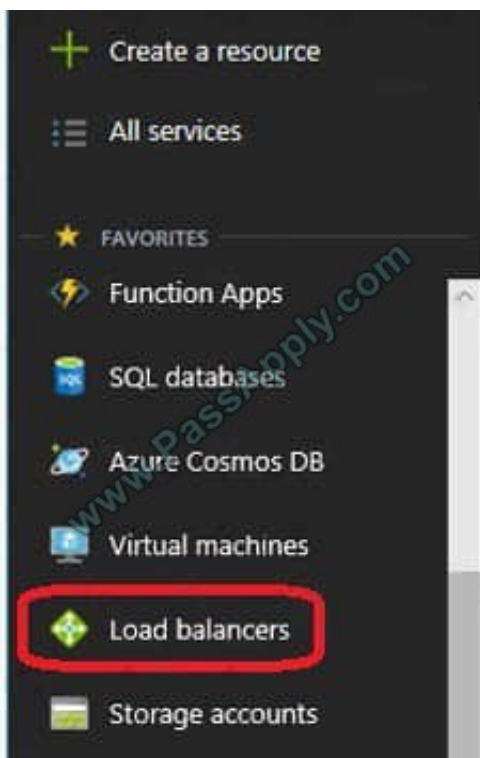
- A. Check the answer in explanantion.

Correct Answer: A

See below.

Step 1:

In the navigation list, choose Load Balancer.



Step 2:



Locate the load balancer named Web-ALB, and click the Access icon.

Step3:

In the Users blade, click Roles. In the Roles blade, click Add to add permissions for the user Janet-7509087@ExamUsers.com.

Step 4:

Add permission to modify backend pools

References:

<https://docs.microsoft.com/en-us/azure/azure-stack/azure-stack-manage-permissions>

QUESTION 4

You have an Azure App Service plan named AdatumASP1 that uses the P2v2 pricing tier. AdatumASP1 hosts an Azure web app named adatumwebapp1.

You need to delegate the management of adatumwebapp1 to a group named Devs. Devs must be able to perform the following tasks:

Add deployment slots.

View the configuration of AdatumASP1.

Modify the role assignment for adatumwebapp1.

Which role should you assign to the Devs group?

- A. Owner
- B. Contributor
- C. Web Plan Contributor
- D. Website Contributor

Correct Answer: B

The Contributor role lets you manage everything except access to resources. Incorrect Answers:

A: The Owner role lets you manage everything, including access to resources.

C: The Web Plan Contributor role lets you manage the web plans for websites, but not access to them.

D: The Website Contributor role lets you manage websites (not web plans), but not access to them.

References:

<https://docs.microsoft.com/en-us/azure/role-based-access-control/built-in-roles>



QUESTION 5

You have an Azure subscription named Subscription1.

You enable Azure Active Directory (AD) Privileged Identity Management.

From Azure AD Privileged Identity Management, you configure the Global Administrator role for the Azure Active Directory (Azure AD) tenant as shown in the Role settings exhibit. (Click the Exhibit tab.)

Activations

Maximum activation duration(hours) ⓘ

4

Notifications

Send email notifying admins of activation ⓘ

Incident/Request ticket

Require incident/request ticket number during activation ⓘ

Multi-Factor Authentication

Require Azure Multi-Factor Authentication for activation ⓘ

Require approval

Require approval to activate this role ⓘ

i If no approvers are selected, Privileged Role Administrators will be approvers by default.

SELECTED APPROVER	ACTION
No results.	

From Azure AD Privileged Identity Management, you configure the global administrators as shown in the Members exhibit. (Click the Exhibit tab.)



MEMBER	EMAIL	ASSIGNMENT TYPE	EXPIRATION
Adatum Ltd	sk180606@outlook.com	Permanent	-
User2	User2@sk180606outlook...	Eligible	-

User2 activates the Global Administrator role on July 16, 2018, at 10:00, as shown in the Activation exhibit. (Click the Exhibit tab.)

Custom activation start time

Activation start time

2018-07-16 10:00:00 AM

(UTC+01:00) Belgrade, Bratislava, Budap.. ▾

Activation duration (hours)

2

The end time of activation would be
16.7.2018 12:00:00

* Activation reason (max 500 characters)

Need permissions to manage Azure ✓

For each of the following statements, select Yes if the statement is true. Otherwise, select No. NOTE: Each correct selection is worth one point.

Hot Area:

Answer Area

Statements	Yes	No
User2 will be a global administrator on July 16, 2018 at 11:00.	<input type="radio"/>	<input type="radio"/>
When User2 attempts to activate the Global Administrator role, the request will activate automatically.	<input type="radio"/>	<input type="radio"/>
User2 must use multi-factor authentication to activate the Global Administrator role.	<input type="radio"/>	<input type="radio"/>



Correct Answer:

Answer Area

Statements	Yes	No
User2 will be a global administrator on July 16, 2018 at 11:00.	<input checked="" type="radio"/>	<input type="radio"/>
When User2 attempts to activate the Global Administrator role, the request will activate automatically.	<input checked="" type="radio"/>	<input type="radio"/>
User2 must use multi-factor authentication to activate the Global Administrator role.	<input checked="" type="radio"/>	<input type="radio"/>

QUESTION 6

You are configuring Azure Active Directory (AD) Privileged Identity Management.

You need to provide a user named Admin1 with read access to a resource group named RG1 for only one month. The user role must be assigned immediately.

What should you do?

- A. Assign an active role.
- B. Assign an eligible role.
- C. Assign a permanently active role.
- D. Create a custom role and a conditional access policy.

Correct Answer: B

Azure AD Privileged Identity Management introduces the concept of an eligible admin. Eligible admins should be users that need privileged access now and then, but not all-day, every day. The role is inactive until the user needs access, then they complete an activation process and become an active admin for a predetermined amount of time.

References: <https://docs.microsoft.com/en-us/azure/active-directory/privileged-identity-management/pim-configure>

QUESTION 7

You need to prevent remote users from publishing via FTP to a function app named FunctionAppIod7509087fa. Remote users must be able to publish via FTPS. What should you do from the Azure portal?

- A. Check the answer in explanation.

Correct Answer: A

See below.

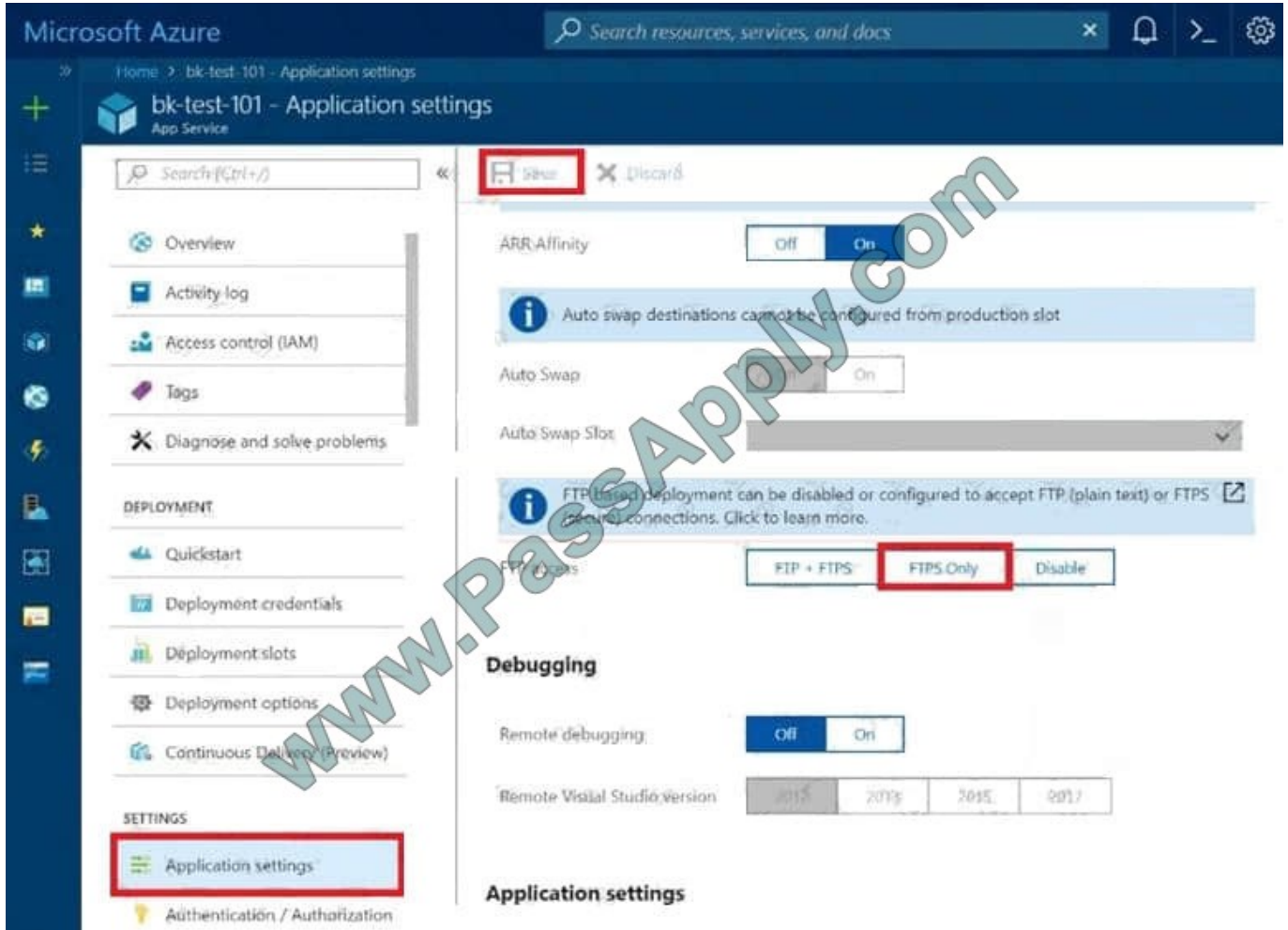
Step 1:



Locate and select the function app FunctionApplod7509087fa.

Step 2:

Select Application Settings > FTP Access, change FTP access to FTPS Only, and click Save.



References: <https://blogs.msdn.microsoft.com/appserviceteam/2018/05/08/web-apps-making-changes-to-ftp-deployments/>

QUESTION 8

You have a Microsoft SQL Server Always On availability group on Azure virtual machines. You need to configure an Azure internal load balancer as a listener for the availability group. What should you do?

- A. Enable Floating IP.
- B. Set Session persistence to Client IP and protocol.
- C. Set Session persistence to Client IP.
- D. Create an HTTP health probe on port 1433.

Correct Answer: A



Incorrect Answers:

D: The Health probe is created with the TCP protocol, not with the HTTP protocol.

References: <https://docs.microsoft.com/en-us/azure/virtual-machines/windows/sql/virtual-machines-windows-portal-sql-alwayson-int-listener>

QUESTION 9

You have an Azure subscription that contains a virtual network named VNet1. VNet1 contains four subnets named Gateway, Perimeter, NVA, and Production.

The NVA subnet contains two network virtual appliances (NVAs) that will perform network traffic inspection between the Perimeter subnet and the Production subnet.

You need to implement an Azure load balancer for the NVAs. The solution must meet the following requirements:

The NVAs must run in an active-active configuration that uses automatic failover.

The NVA must load balance traffic to two services on the Production subnet. The services have different IP addresses

Which three actions should you perform? Each correct answer presents part of the solution. NOTE: Each correct selection is worth one point.

- A. Add two load balancing rules that have HA Ports enabled and Floating IP disabled.
- B. Deploy a standard load balancer.
- C. Add a frontend IP configuration, two backend pools, and a health probe.
- D. Add a frontend IP configuration, a backend pool, and a health probe.
- E. Add two load balancing rules that have HA Ports and floating IP enabled.
- F. Deploy a basic load balancer.

Correct Answer: BCE

A standard load balancer is required for the HA ports.

Two backend pools are needed as there are two services with different IP addresses.

Floating IP rule is used where backend ports are reused.

Incorrect Answers:

F: HA Ports are not available for the basic load balancer.

References: <https://docs.microsoft.com/en-us/azure/load-balancer/load-balancer-standard-overview>
<https://docs.microsoft.com/en-us/azure/load-balancer/load-balancer-multivip-overview>

QUESTION 10



You need to recommend a solution to automate the configuration for the finance department users. The solution must meet the technical requirements. What should you include in the recommended?

- A. Azure AP B2C
- B. Azure AD Identity Protection
- C. an Azure logic app and the Microsoft Identity Management (MIM) client
- D. dynamic groups and conditional access policies

Correct Answer: D

Scenario: Ensure Azure Multi-Factor Authentication (MFA) for the users in the finance department only.

The recommendation is to use conditional access policies that can then be targeted to groups of users, specific applications, or other conditions.

References:

<https://docs.microsoft.com/en-us/azure/active-directory/authentication/howto-mfa-userstates>

QUESTION 11

Note: This question is part of a series of questions that present the same scenario. Each question in the series contains a unique solution that might meet the stated goals. Some question sets might have more than one correct solution, while

others might not have a correct solution.

After you answer a question in this section, you will NOT be able to return to it. As a result, these questions will not appear in the review screen.

You manage a virtual network named VNet1 that is hosted in the West US Azure region.

VNet1 hosts two virtual machines named VM1 and VM2 that run Windows Server.

You need to inspect all the network traffic from VM1 to VM2 for a period of three hours.

Solution: From Azure Monitor, you create a metric on Network In and Network Out.

Does this meet the goal?

- A. Yes
- B. No

Correct Answer: B

You should use Azure Network Watcher.

References: <https://docs.microsoft.com/en-us/azure/network-watcher/network-watcher-monitoring-overview>



QUESTION 12

You need to deploy an Azure load balancer named lb 1015 to your Azure subscription. The solution must meet the following requirements:

- Support the load balancing of IP traffic from the Internet to Azure virtual machines connected to VNET1016 \subnet0.
- Provide 4 Service level Agreement (SLA) of 99.99 percent availability for the Azure virtual machines.
- Minimize Azure-related costs.

What should you do from the Azure portal?

To complete this task, you do NOT need to wait for the deployment to complete. Once the deployment starts in Azure, you can move to the next task.

A. Check the answer in explanation.

Correct Answer: A

See below.

Step 1:

On the top left-hand side of the screen, click Create a resource > Networking > Load Balancer.

Step 2:

In the Create a load balancer page enter these values for the load balancer:

myLoadBalancer - for the name of the load balancer.

Internal - for the type of the load balancer.

Basic - for SKU version.

Microsoft guarantees that apps running in a customer subscription will be available 99.99% of the time.

VNET1016\subnet0 - for subnet that you choose from the list of existing subnets.

Step 3: Accept the default values for the other settings and click Create to create the load balancer.

[Latest AZ-101 Dumps](#)

[AZ-101 VCE Dumps](#)

[AZ-101 Exam Questions](#)



To Read the [Whole Q&As](#), please purchase the [Complete Version](#) from [Our website](#).

Try our product !

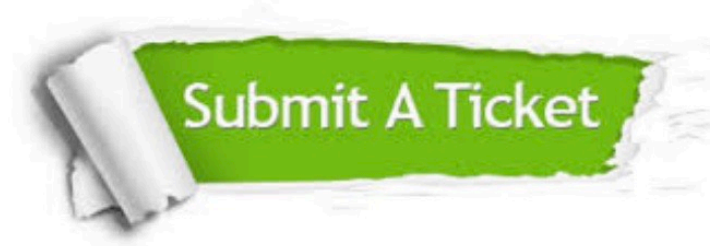
100% Guaranteed Success
100% Money Back Guarantee
365 Days Free Update
Instant Download After Purchase
24x7 Customer Support
Average 99.9% Success Rate
More than 800,000 Satisfied Customers Worldwide
Multi-Platform capabilities - [Windows](#), [Mac](#), [Android](#), [iPhone](#), [iPod](#), [iPad](#), [Kindle](#)

We provide exam PDF and VCE of Cisco, Microsoft, IBM, CompTIA, Oracle and other IT Certifications. You can view Vendor list of All Certification Exams offered:

<https://www.passapply.com/allproducts>

Need Help

Please provide as much detail as possible so we can best assist you.
To update a previously submitted ticket:



 <p>One Year Free Update Free update is available within One Year after your purchase. After One Year, you will get 50% discounts for updating. And we are proud to boast a 24/7 efficient Customer Support system via Email.</p>	 <p>Money Back Guarantee To ensure that you are spending on quality products, we provide 100% money back guarantee for 30 days from the date of purchase.</p>	 <p>Security & Privacy We respect customer privacy. We use McAfee's security service to provide you with utmost security for your personal information & peace of mind.</p>
---	---	--

Any charges made through this site will appear as Global Simulators Limited.
All trademarks are the property of their respective owners.
Copyright © passapply, All Rights Reserved.