



AD0-E117^{Q&As}

Adobe Experience Manager Architect Master

Pass Adobe AD0-E117 Exam with 100% Guarantee

Free Download Real Questions & Answers **PDF** and **VCE** file from:

<https://www.passapply.com/ad0-e117.html>

100% Passing Guarantee
100% Money Back Assurance

Following Questions and Answers are all new published by Adobe
Official Exam Center

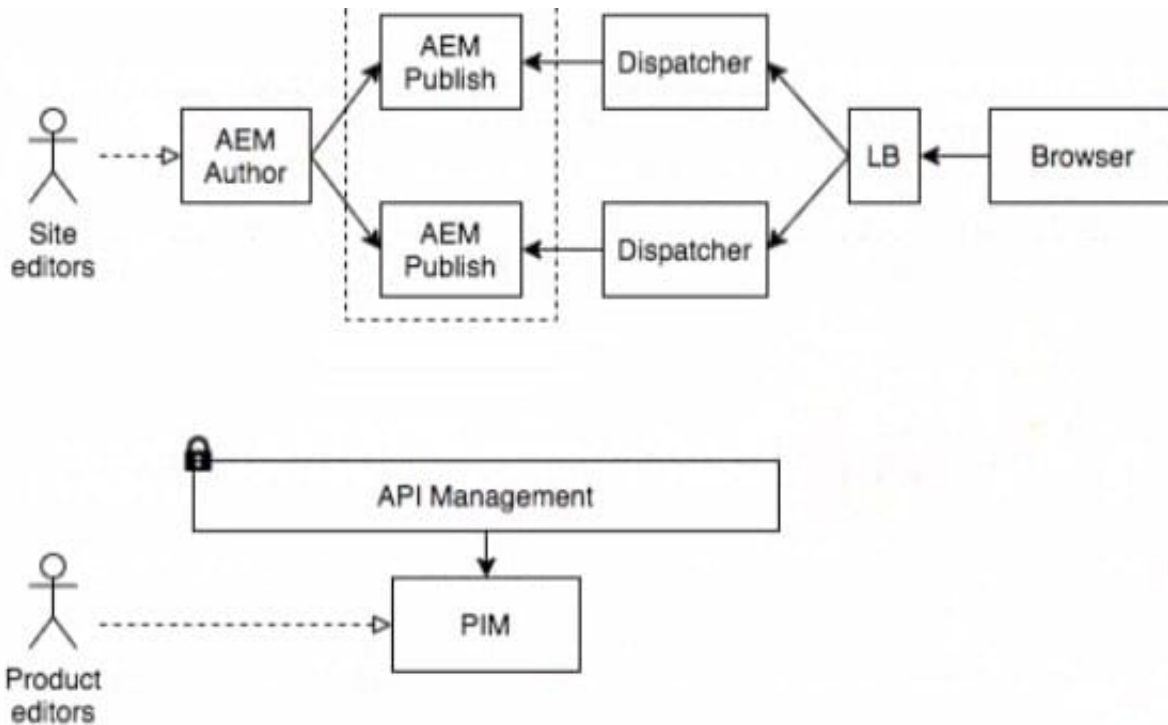
- ⚙️ **Instant Download** After Purchase
- ⚙️ **100% Money Back** Guarantee
- ⚙️ **365 Days** Free Update
- ⚙️ **800,000+** Satisfied Customers





QUESTION 1

Refer to the exhibit.



A customer with an existing AEM implementation wants to enrich product pages with technical data coming from their PIM system. The PIM system sits behind an API Management solution that publicly exposes the PIM API's as RESTful web services with basic authentication as the security mechanism. Data consistency with the PIM and secure access to the APIs are key elements of the integration.

How should the Architect set up the integration between AEM and the PIM?

- A. Integrate the AEM Publishers directly with the API Management solution
- B. Use a client-side integration with AJAX from the browser to the API Management
- C. Import the technical data into the AEM Author and replicate to Publishers
- D. Convert the technical data to Content Fragments and expose using Content Services

Correct Answer: A

QUESTION 2

An Architect needs to design a deployment process without downtime for end users. The system architecture contains an AEM author, two AEM publishers, two publish Dispatchers, and a centrally managed load balancer. The publishers serve some content that cannot be cached.

Which two actions should the Architect take to meet these requirements? (Choose two.)



- A. Connect each publish Dispatcher to one AEM publish
- B. Use each publish Dispatcher to load-balance to both AEM publishers
- C. Deploy software packages by replicating them from author to publishers
- D. Configure the centrally managed load balancer to connect directly to the AEM publisher that is not being dedKyed to
- E. Deploy software package to AEM Publishers one by one

Correct Answer: CD

QUESTION 3

A media company wants to use AEM as content hub for multiple customer touch points:

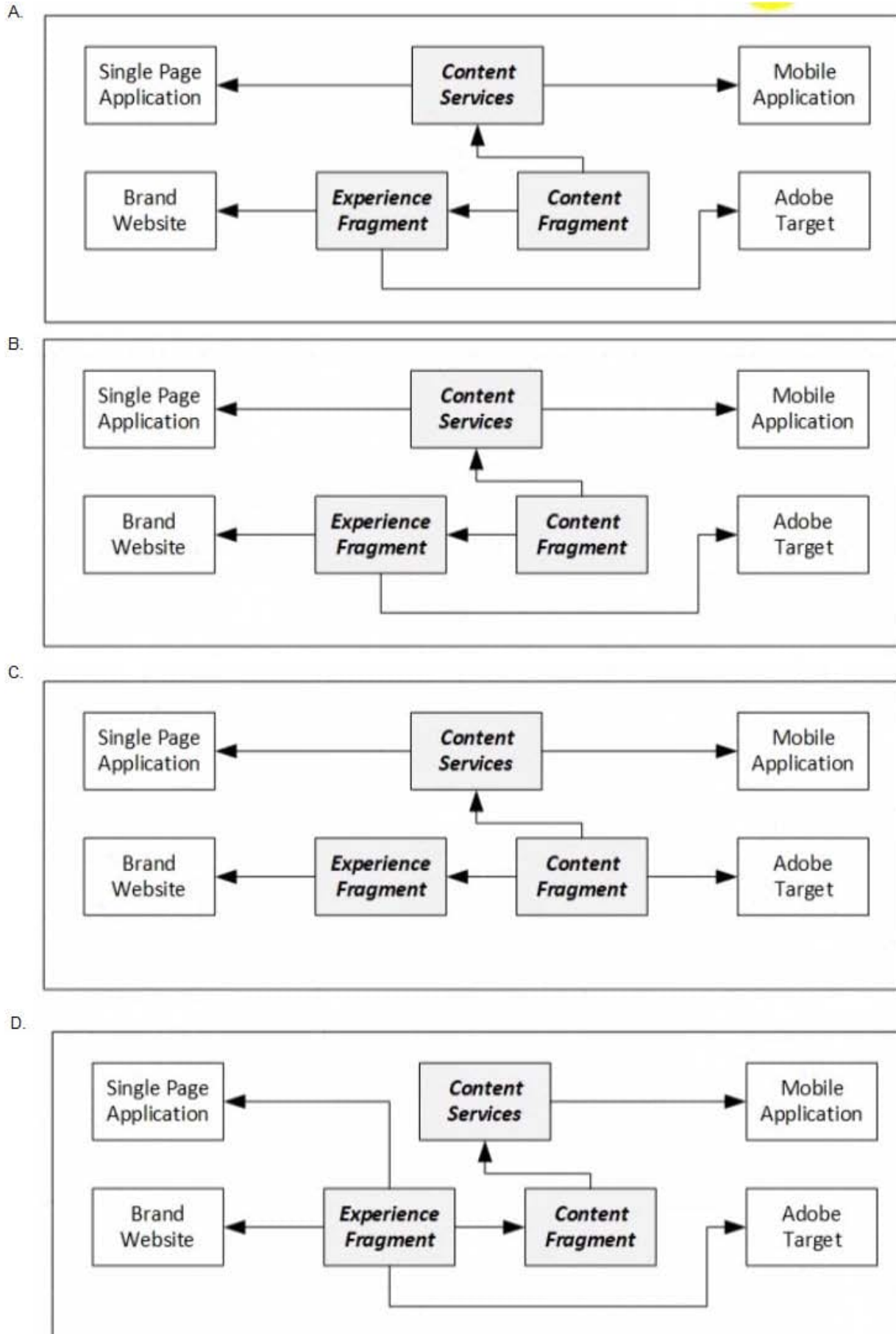
1.
Brand-specific marketing websites hosted on AEM Sites ?Single Page Applications using headless content

2.
Native mobile applications

3.
Content offers in Adobe Target

The company wants to manage its content efficiently with its small editor staff. Text should be entered and reviewed only once, then reused for all touch points.

How should an Architect incorporate these requirements into a solution that leverages AEM Sites features?





- A. OptionA
- B. OptionB
- C. OptionC
- D. OptionD

Correct Answer: D

QUESTION 4

A client is in the discovery process for building a React native app, which is a single codebase that runs natively on iOS and Android. The goal is to reduce development costs. The client wants to reduce content creation costs in the new react Native app by reusing as much of the marketing content already publish in their AEM instance.

What should the Architect recommend to meet this requirement?

- A. Experience Fragments
- B. OSGi Bundles
- C. Sling Resource Resolution
- D. Content Fragments

Correct Answer: C

QUESTION 5

A large AEM enterprise site is implementing authentication and requires a true optimal load balancing across the site's multi AEM publish instances. Which approach should an Architect take to meet this requirement?

- A. Configure Sticky Connections
- B. Configure the Dispatcher to run with a Dedicated System User
- C. Enable Encapsulated Token Option
- D. Enable Round Robin processing in Dispatcher configuration

Correct Answer: D

QUESTION 6

A company with various departments wants to use tagging to improve search capability. Each department is restricted to use its own tags. How should an Architect organize the tags?

- A. Create a department sub-tag in each tag



- B. Use department ID as a prefix of each tag
- C. Create a namespace for each department
- D. Create tags in "departmentName:tagName" format

Correct Answer: C

QUESTION 7

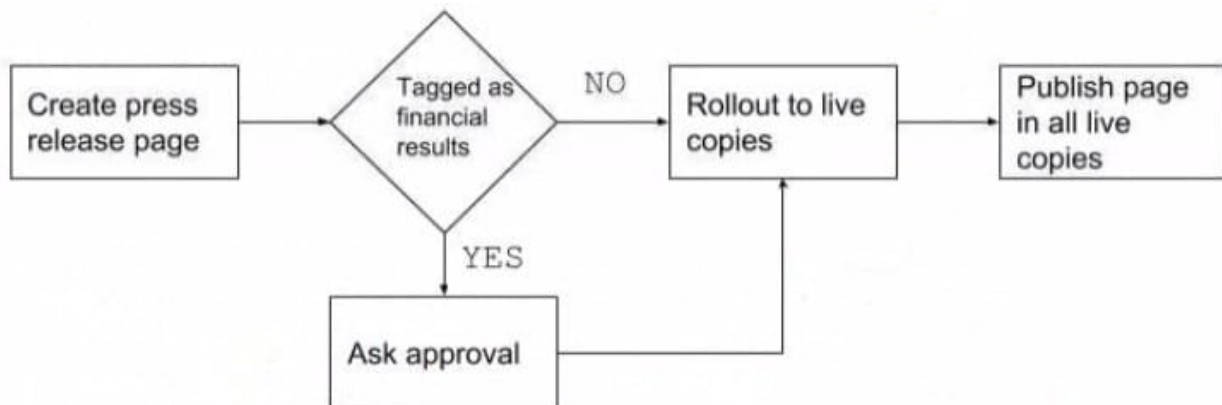
A customer wants to implement an AEM solution to serve localized content to several regional websites. Which AEM capability should the Architect recommend?

- A. Use translation connector and Multi Site Manager
- B. Use il8N API and Multi Site Manager
- C. Use translation connector and il8N API
- D. Use translation connector and translation workflows

Correct Answer: C

QUESTION 8

A customer wants to simplify and automate publishing press pages and defines the following flows:



What should the Architect recommend?

- A. Create a custom workflow
- B. Advise the customer to use Launches
- C. Implement a Sling event listener that triggers on page creation
- D. Configure MSM with the "Activate on Blueprint activation" option

Correct Answer: B



QUESTION 9

A large digital agency has 10 TB of assets in their DAM where renditions for each Asset must be created without affecting performance for the authors. Which capability should the Architect recommend to meet the requirements?

- A. Reduce the number of AEM Asset versions
- B. Create AEM multi-threaded workflow
- C. Use AEM Asset Offloading
- D. Update dispatcher configuration to cache Assets

Correct Answer: B

QUESTION 10

During the implementation of a public-facing website based on AEM as a Cloud Service, the customer raises an additional requirement to have a commenting functionality for end users implemented on the pages.

What should the Architect do to make the design a future proof solution?

- A. Save comments in JCR and leverage Sling Distribution to synchronize comments between publishers
- B. Integrate a third-party solution to store comments externally
- C. Use MongoDB as provided with AEM as a Cloud Service to store the comments
- D. Save comments in JCR and leverage reverse replication to synchronize comments via author

Correct Answer: C

[AD0-E117 VCE Dumps](#)

[AD0-E117 Practice Test](#)

[AD0-E117 Study Guide](#)