



# ACLS<sup>Q&As</sup>

Advanced Cardiac Life Support

## Pass Test Prep ACLS Exam with 100% Guarantee

Free Download Real Questions & Answers **PDF** and **VCE** file from:

<https://www.passapply.com/acls.html>

100% Passing Guarantee  
100% Money Back Assurance

Following Questions and Answers are all new published by Test Prep  
Official Exam Center

-  **Instant Download** After Purchase
-  **100% Money Back** Guarantee
-  **365 Days** Free Update
-  **800,000+** Satisfied Customers

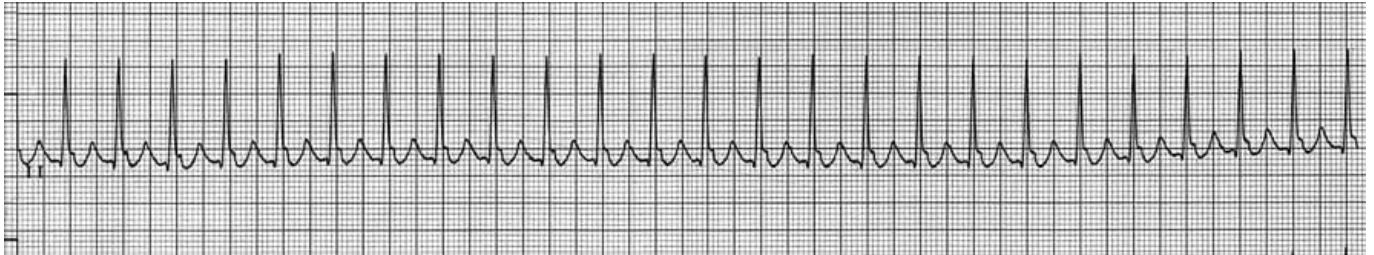




### QUESTION 1

#### SIMULATION

A patient in the CCU complains of sudden dizziness, nausea, vomiting, Difficulty breathing. Exam reveals rates throughout both lung fields, BP is 80/50, and respirations are 40/min. The monitor shows the following rhythm. Treatment?



A. IV access, O<sub>2</sub>, monitor, IV sedation followed by synchronized cardioversion at 100 J. (The rhythm above shows paroxysmal supraventricular tachycardia.)

Correct Answer: A

### QUESTION 2

#### SIMULATION

Describe the major function of the aorta.

A. The aorta is the major artery originating from the heart and lying in front of the spine in the thoracic and abdominal cavities. This provides blood flow to the rest of the vascular system in the body.

Correct Answer: A

### QUESTION 3





A patient has been resuscitated from cardiac arrest and is being prepared for transport. She is incubated and is receiving 100% oxygen. During the resuscitation she received 2 doses of epinephrine 1 mg, atropine 1 mg, and lidocaine 100 mg IV. You now observe the above rhythm on the cardiac monitor. The rhythm abnormality is becoming more frequent and increasing in number. You should order:

- A. Give amiodarone 300 mg IV, start infusion
- B. Give lidocaine 1 to 1.5 mg IV
- C. Repeat epinephrine 1 mg IV
- D. Give lidocaine 0.5 to 0.75 mg/kg IV, start lidocaine infusion
- E. Give amiodarone 150 mg IV, start infusion

Correct Answer: D

---

#### QUESTION 4

T/F: Propranolol increases the pumping function of heart muscle.

- A. True
- B. False

Correct Answer: B

Beta-blockers depress contractility.

---

#### QUESTION 5

##### SIMULATION

How does the trachea in an adult and child differ?

- A. Infants and children have narrower tracheas that are obstructed more easily by swelling, and the trachea is also softer and more flexible. The cricoid cartilage is less developed and less rigid, and is the narrowest portion of the child's airway.

Correct Answer: A

---

#### QUESTION 6



A 45-year-old woman with a history of palpitations develops lightheadedness and palpitations. She has received adenosine 6 mg IV for the rhythm shown above without conversion of the rhythm. She is now extremely apprehensive. Blood pressure is 108/70 mmHg. The next appropriate intervention is

- A. Perform vagal maneuvers and repeat adenosine 6 mg IV
- B. Perform immediate unsynchronized cardioversion
- C. Repeat adenosine 12 mg IV
- D. Repeat adenosine 3 mg IV
- E. Sedate and perform synchronized cardioversion

Correct Answer: C

#### QUESTION 7

A 60-year-old patient complains of chest pain for 60 minutes. The patient is cool and clammy, heart rate is 40 beats/min, and blood pressure is 70/50 mm Hg. What is the recommended immediate treatment?

- A. atropine 0.5–1 mg IV push
- B. dopamine IV infusion 20 mcg/kg/min
- C. epinephrine 1 mg IV push
- D. transcutaneous pacemaker

Correct Answer: A

#### QUESTION 8

T/F: An ACLS provider card certifies that a student has successfully completed the standards of the American Heart Association course.

- A. False
- B. True



Correct Answer: B

The ACLS provider card demonstrates that a student has successfully completed an ACLS course according to the standards of the American Heart Association.

---

#### QUESTION 9

T/F: Infectious complications of intravenous cannulas should be prevented by using systemic antibiotics.

A. True

B. False

Correct Answer: B

---

#### QUESTION 10

FILL BLANK

A patient with ventricular fibrillation has been resuscitated using no antiarrhythmic drugs. Once the pulse is restored, what drugs should be provided?

A. Oxygen and intravenous lidocaine

Correct Answer: A

---

#### QUESTION 11

SIMULATION

How should the trigger be positioned on a flow-restricted oxygen-powered ventilation device?

A. In such a way that both hands of the EMT can remain on the mask to hold it in position.

Correct Answer: A

---

#### QUESTION 12

A 70-kg emergency department patient has pulseless electrical activity. An IV is started and a saline infusion is begun. What should the first treatment be?

A. lidocaine 70 mg

B. epinephrine 1 mg IV

---





C. verapamil 5 mg IV

D. sodium bicarbonate 1 ampule

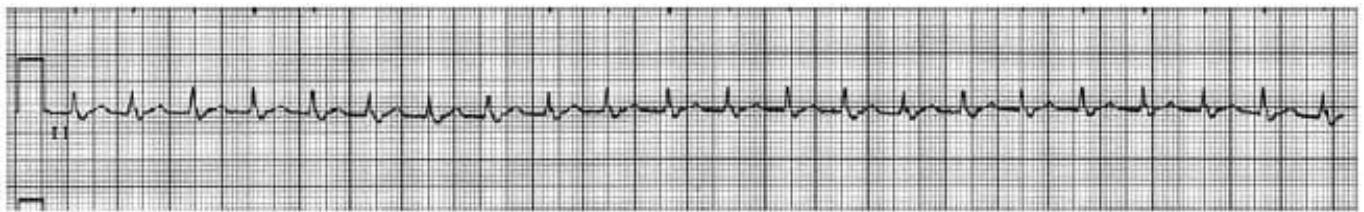
Correct Answer: B

---

### QUESTION 13

FILL BLANK

A 60-year-old patient presents with a blood pressure of 80/40, heart rate 200, and respiratory rate 24. The nurse has placed oxygen on the patient. The following rhythm is seen on the monitor. What is the treatment?



A. Synchronized cardioversion Synchronized cardioversion. (The rhythm seen above shows supraventricular tachycardia.)

Correct Answer: A

---

### QUESTION 14

T/F: Endotracheal intubation reduces the risk of aspiration of gastric contents.

A. False

B. True

Correct Answer: B

---

### QUESTION 15

SIMULATION

Give an example of an advanced directive.

A. Do Not Resuscitate (DNR) orders.

Correct Answer: A

---



VCE & PDF

PassApply.com

<https://www.passapply.com/acls.html>

2024 Latest passapply ACLS PDF and VCE dumps Download

---

[ACLS PDF Dumps](#)

[ACLS Study Guide](#)

[ACLS Exam Questions](#)