

Vendor: VMware

Exam Code: VCPC510

Exam Name: VMware Certified Professional on vCloud

Version: Demo

QUESTION 1

-- Exhibit

The screenshot shows a configuration window with three tabs: "Name and Description", "Network Specification", and "Syslog Server Settings". The "Network Specification" tab is active. It contains the following fields:

- Network mask: 255.255.255.0 *
- Default gateway: 192.168.20.254 *
- Primary DNS: (empty)
- Secondary DNS: (empty)
- DNS suffix: (empty)

Static IP pool:

Enter an IP range (format: 192.168.1.2 - 192.168.1.100) or IP address and click Add.

IP Range	Action
192.168.20.1 - 192.168.20.100	Modify

Total: 100

Buttons: Add, Modify, Remove, OK, Cancel

-- Exhibit --

Click the Exhibit button.

An administrator needs to modify the range of static IP addresses available to the network in question. The administrator clicks on the Network Specification tab and is presented the options shown in the exhibit, which cannot be selected.

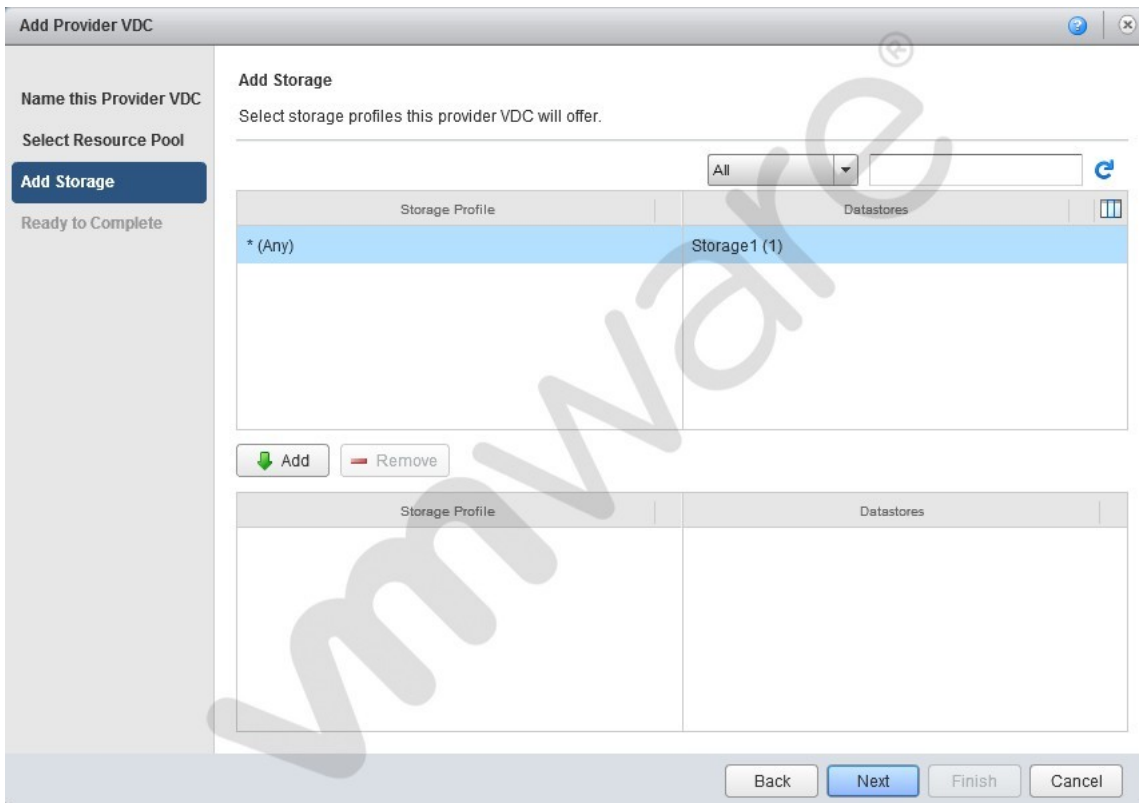
What is a possible cause for this issue?

- A. The administrator does not have the vShield Manager role.
- B. The administrator does not have the organization administrator role.
- C. The vShield Edge appliance has been powered off and is inaccessible.
- D. The network in question is a direct connected external organization network.

Correct Answer: D

QUESTION 2

-- Exhibit



-- Exhibit --

Click the Exhibit button.

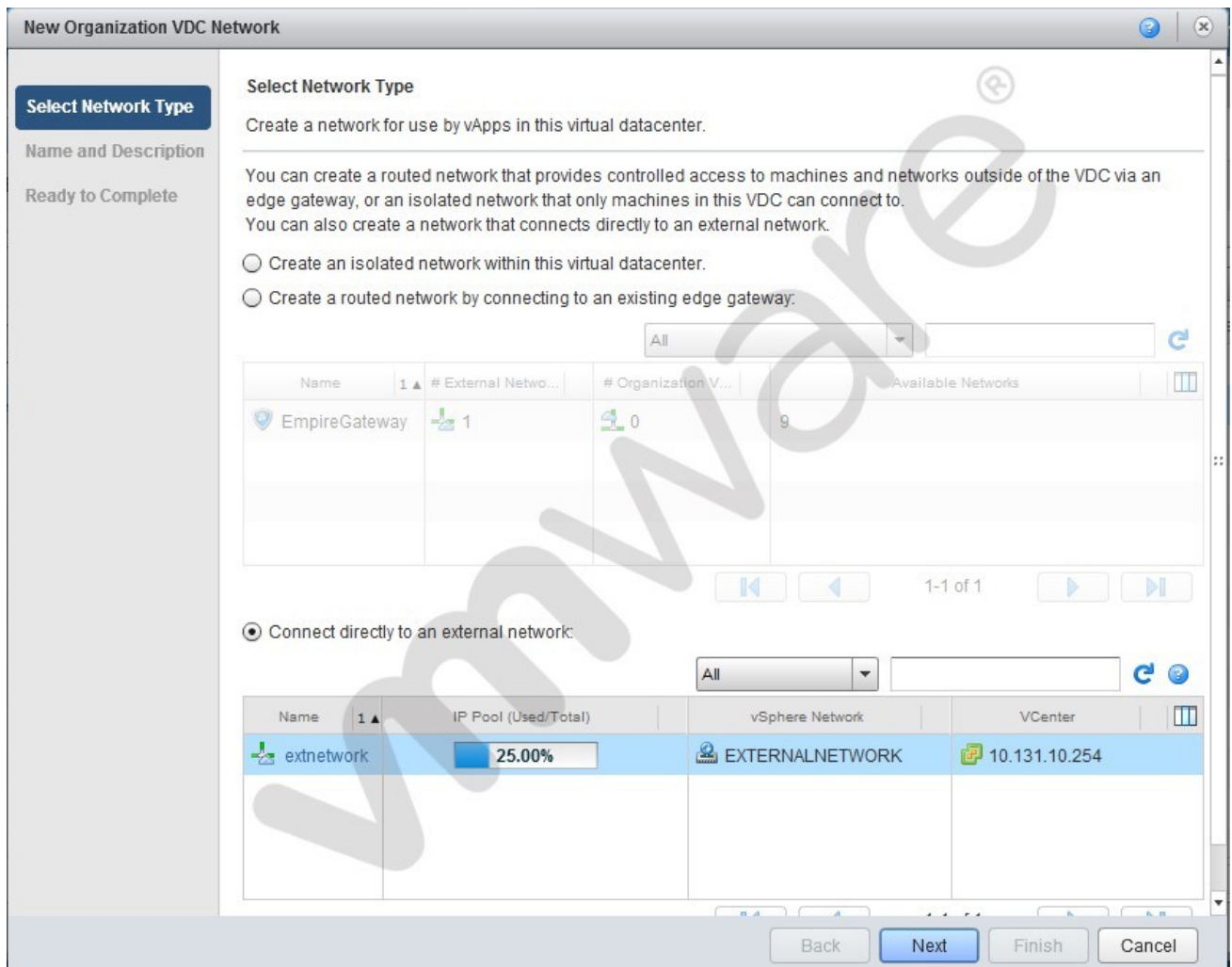
When adding storage in the Provider vDC wizard you don't see the intended Storage Profile. What could be the cause?

- A. The Storage Profile has not been created in vCenter.
- B. The Storage Profile has been named with more than 5 characters.
- C. The Storage Profile is set by the Org vDC wizard
- D. The Provider vDC combines all storage profiles into *(Any)

Correct Answer: A

QUESTION 3

-- Exhibit --



-- Exhibit --

Click the Exhibit button.

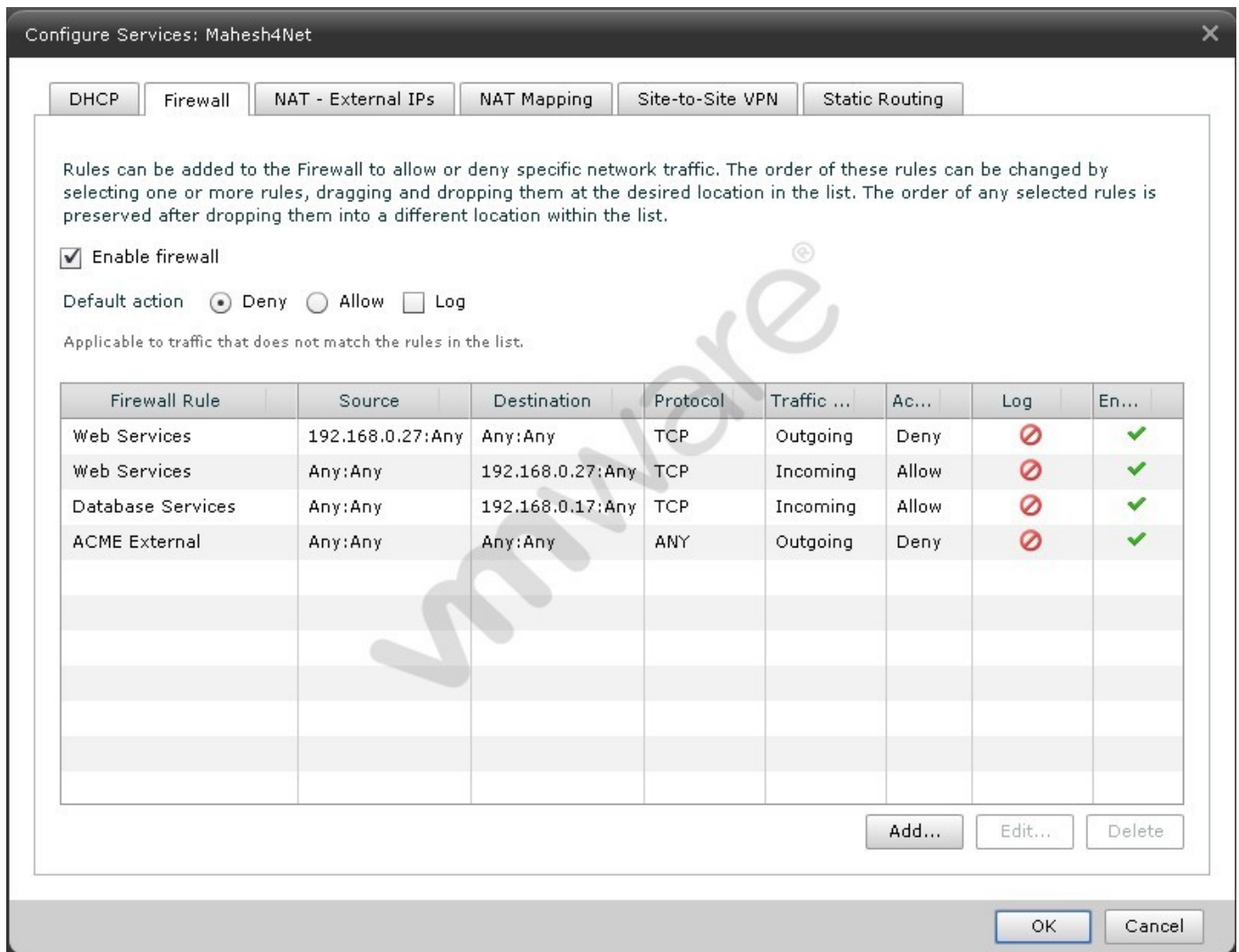
Which External Organization Network type is being created in the Organization Network Creation Wizard?

- A. External port group-backed
- B. External VLAN-backed
- C. External Direct
- D. External Routed

Correct Answer: C

QUESTION 4

-- Exhibit



-- Exhibit --

Click the Exhibit button.

ACME has a virtual machine with an IP address of 192.168.0.51. It is running an SMTP mail service and is unable to communicate from the assigned network. The network is an External Routed network with the firewall rules displayed in the exhibit.

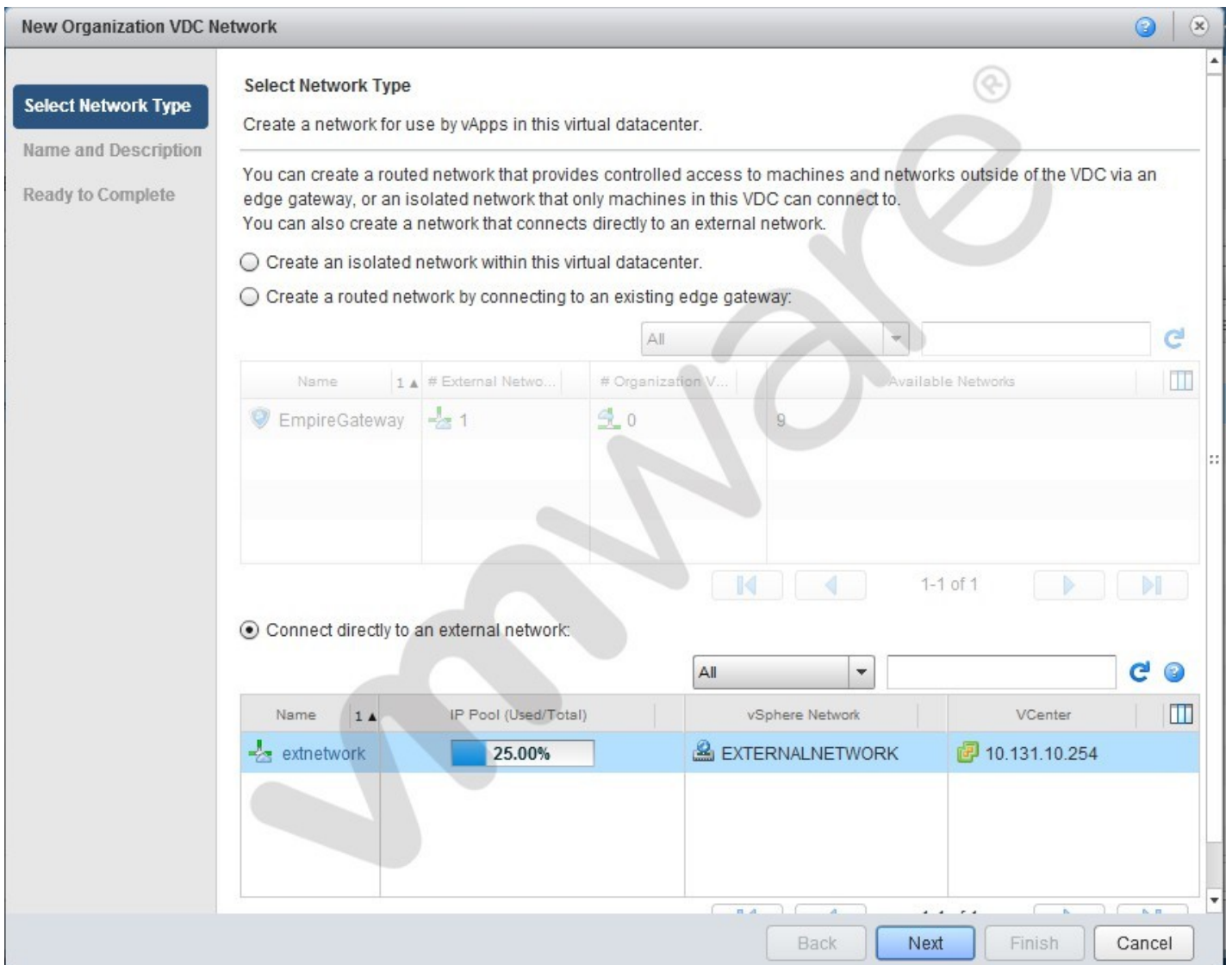
Which configuration change would correct this behavior?

- A. Set the Destination IP address to 192.168.0.51.
- B. Disable the Web Services rule for the Incoming Traffic Type.
- C. Change the ACME External rule Traffic Type to Incoming.
- D. Set the ACME External rule to Allow.

Correct Answer: D

QUESTION 5

-- Exhibit



-- Exhibit --

Click the Exhibit button.

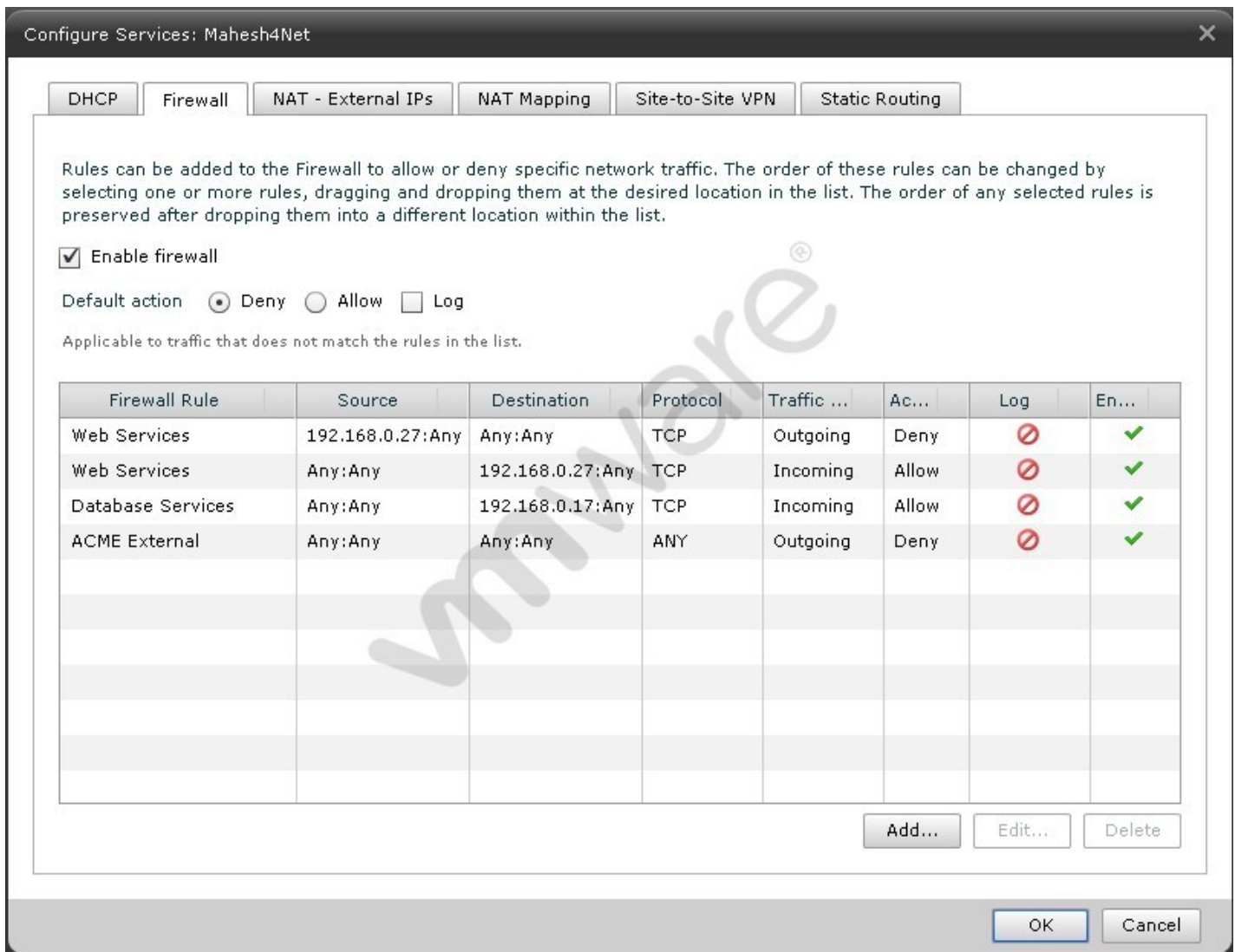
Which External Organization Network type is being created in the Organization Network Creation Wizard?

- A. External port group-backed
- B. External VLAN-backed
- C. External Direct
- D. External Routed

Correct Answer: C

QUESTION 6

-- Exhibit



-- Exhibit --
Click the Exhibit button.

ACME has a Web Server virtual machine with an IP Address of 192.168.0.27. It is not responding to incoming customer requests on either internal or external networks. The network is an External Routed network with the firewall rules displayed in the exhibit.

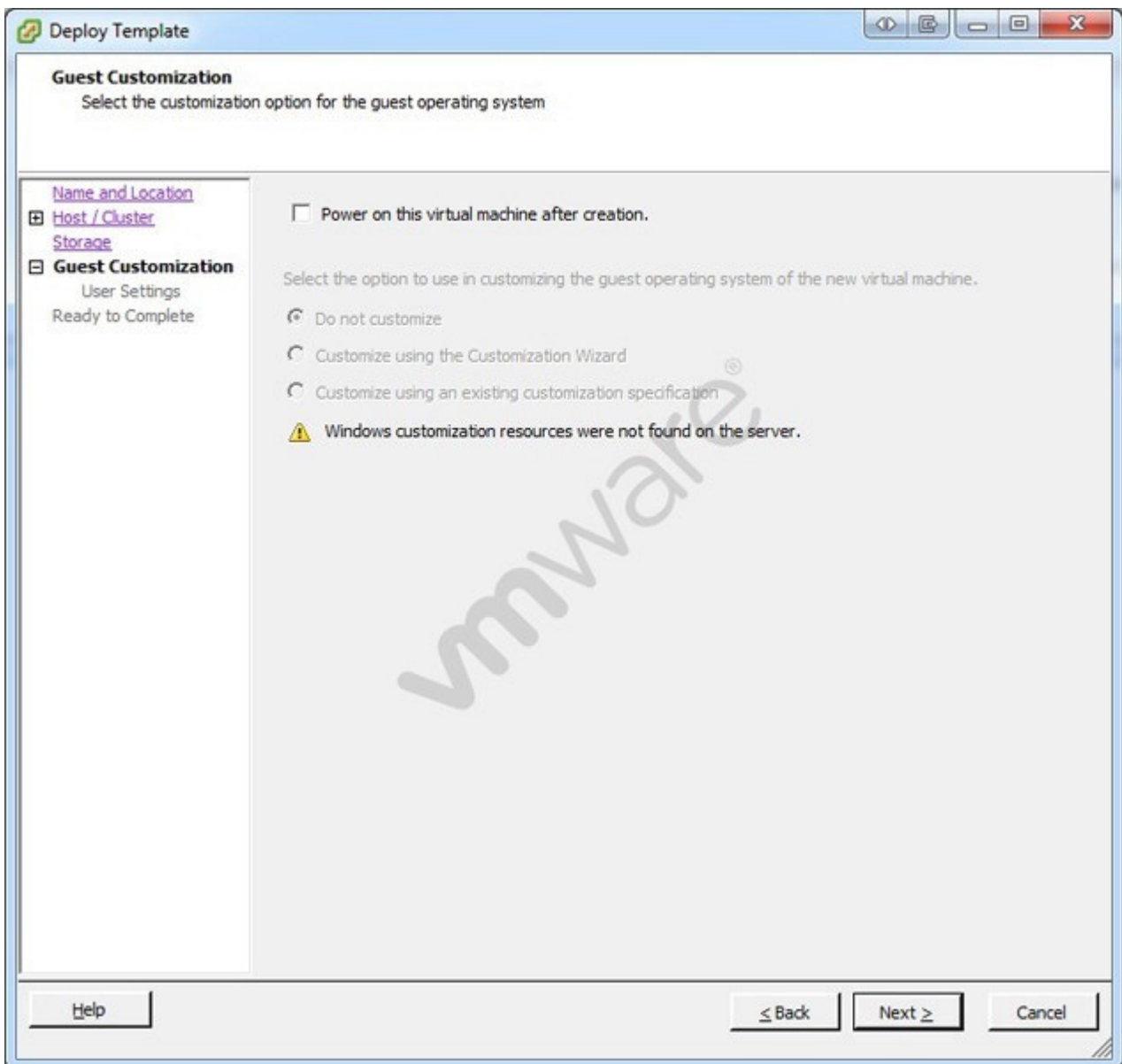
Which configuration change would correct this behavior?

- A. Change the Outgoing Web Services rule to Allow.
- B. Change the IP Address of the Incoming Web Services rule to 192.168.0.17
- C. Change the IP Address of the Web Services Source to 192.168.0.17
- D. Delete the Outgoing Web Services rule.

Correct Answer: A

QUESTION 7

-- Exhibit



-- Exhibit --

Click the Exhibit button.

An administrator has implemented a new vSphere 5 environment and is deploying their first Windows 2008 R2 template. When running the Deploy Template wizard, the error shown in the exhibit appears.

What can be done to correct the problem?

- A. Select the correct guest OS setting for the virtual machine.
- B. Windows 2003 x64 cannot be customized.
- C. Download and install the Microsoft Sysprep tool into the virtual machine to be customized.
- D. Download the Microsoft Sysprep tool to the appropriate vCenter Server directory.

Correct Answer: A

QUESTION 8

Your Cloud Administrator has asked you to deploy an Edge Gateway that will serve as a primary gateway for multiple Org vDC Networks. It has been decided that the size of the Edge Gateway will be Full.

When the Edge Gateway is deployed, what is the correct number cpus, memory, and cpu shares that will

be automatically allocated?

- A. 1 cpu(s) with 1000 Shares and 256MB of memory.
- B. 2 cpu(s) with 1000 Shares and 512MB of memory.
- C. 2 cpu(s) with 2000 Shares and 1024MB of memory.
- D. 1 cpu(s) with 2000 Shares and 256MB of memory.

Correct Answer: C

QUESTION 9

-- Exhibit

Leases

Specify the maximum time that vApps and vApp templates can run and be stored in this organization's vDC(s).

vApp leases:

Maximum runtime lease: 7 Days *

How long vApps can run before they are automatically stopped.

Maximum storage lease: 90 Days *

How long stopped vApps are available before being automatically cleaned up.

Storage cleanup: Move to Expired Items

-- Exhibit --

Click the Exhibit button.

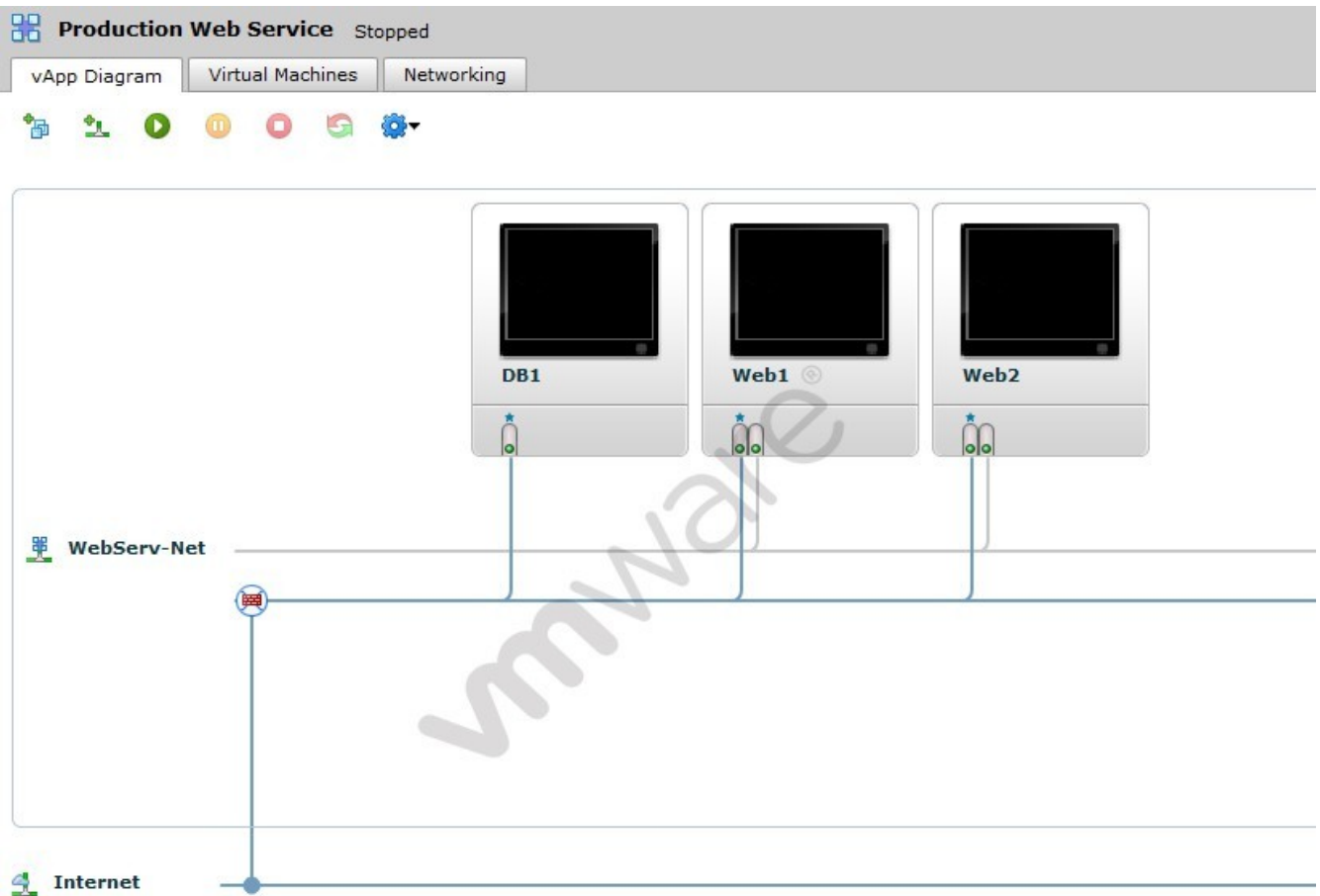
How long will VMs deployed in an organization with the indicated settings reside on storage?

- A. Until powered off
- B. Indefinitely
- C. Three months
- D. One week

Correct Answer: B

QUESTION 10

-- Exhibit



-- Exhibit --

Click the Exhibit button.

A business requires the DB1 server to remain isolated from the Internet. Web1 and Web2 are multi-homed and not configured to forward packets.

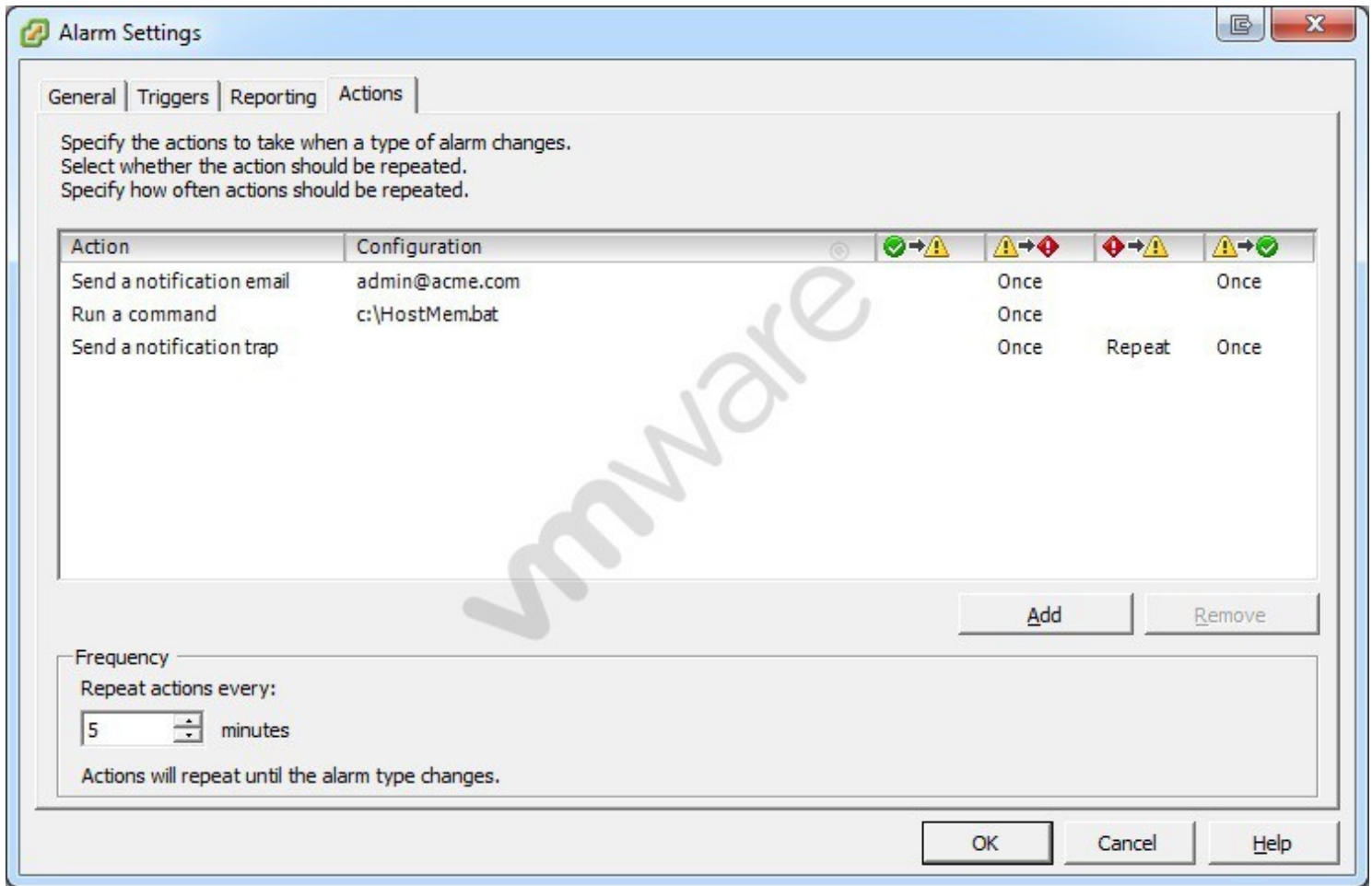
Based on the exhibit, what must be done to meet the business requirement?

- A. Deploy an additional vShield Edge device between DB1 and Web VMs.
- B. Connect DB1 to a new isolated network.
- C. Modify the DB1 NIC to connect to WebServ-Net.
- D. Deploy an additional vShield Edge device between DB1 and the Internet.

Correct Answer: C

QUESTION 11

-- Exhibit



-- Exhibit --

Click the Exhibit button.

An administrator is seeing a warning on one of their hosts. The warning in the Triggered Alarms panel appears to come from a custom configured host alarm. The administrator has not seen any actions taken for this alarm even though the actions are configured in the alarm definition. The configured actions are shown in the exhibit.

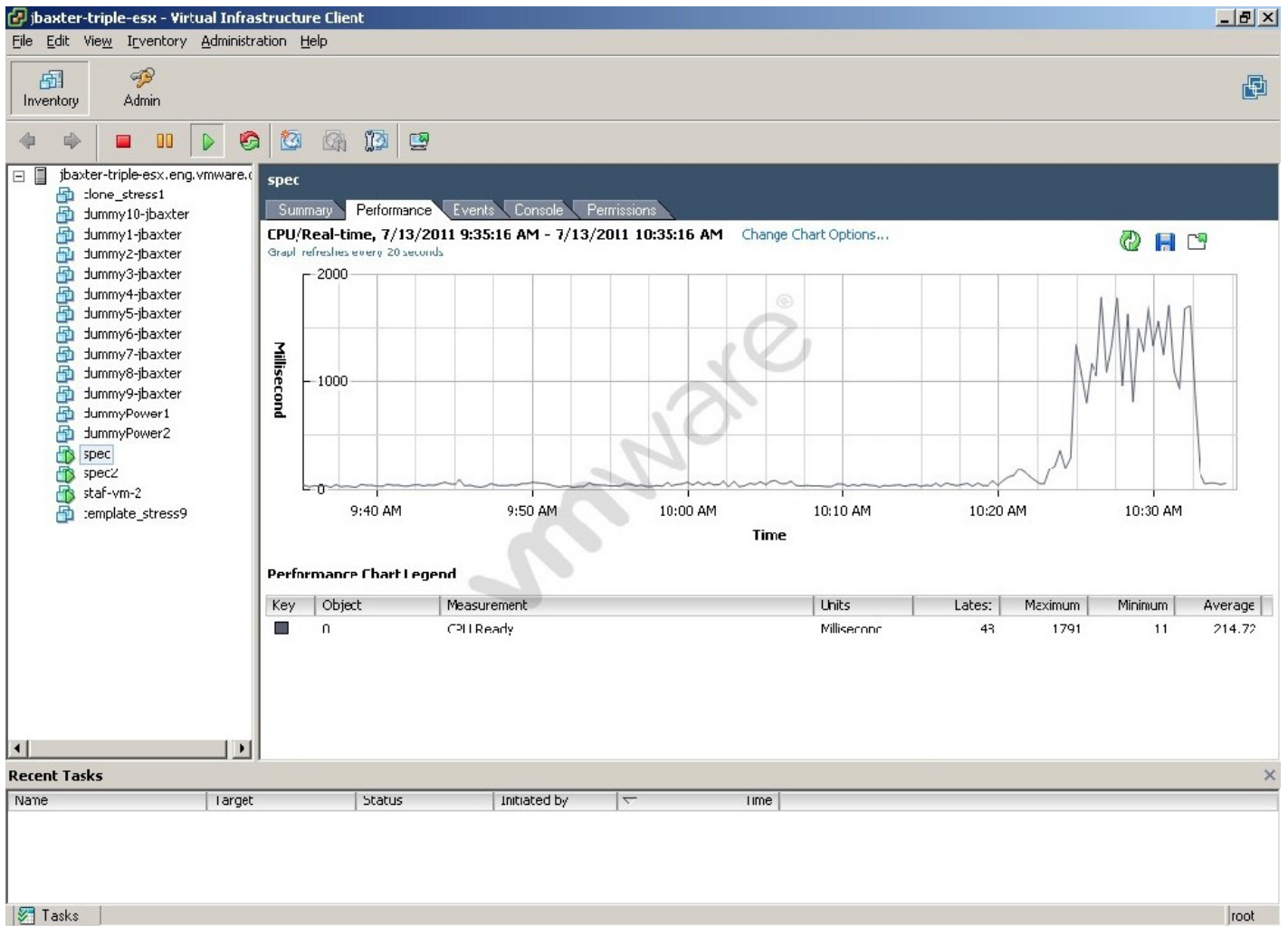
What change can the administrator make to correct the problem?

- A. Configure the Alarm Frequency to repeat more often.
- B. Add an action for when the alarm changes from yellow to red.
- C. Add an action for when the alarm changes from green to yellow.
- D. Configure the alarm yellow to red action to repeat for all three actions configured.

Correct Answer: C

QUESTION 12

-- Exhibit



-- Exhibit --

Click the Exhibit button.

Which change will eliminate the symptom in the performance chart shown in the exhibit?

- A. Set CPU shares to High
- B. Set CPU affinity for the virtual machine
- C. Migrate the VM to a host that is less utilized
- D. Add a CPU to the virtual machine

Correct Answer: C

QUESTION 13

What differentiates a private cloud from a vSphere Infrastructure?

- A. A private cloud requires pooled resources including storage and networking.
- B. vSphere Infrastructure assumes a secure location for the workloads.
- C. vSphere Infrastructure allows consumption of resources over open standards.
- D. A private cloud assumes the consumer will maintain their portion of the infrastructure.

Correct Answer: A

QUESTION 14

Which component is the metering tool for vCloud administration?

- A. VMware vCenter Chargeback
- B. VMware vCloud Service Manager
- C. VMware vCloud Request Manager
- D. VMware vCloud Director

Correct Answer: A

QUESTION 15

What is the default VFAT scratch partition size for ESXi 5.x when installed on a USB drive?

- A. 600MB
- B. 544MB
- C. 4GB
- D. none

Correct Answer: D

QUESTION 16

An administrator is unable to find network traffic details while running vCloud hierarchy reports. The network administrator confirms that there was network traffic during the report time span.

Which collector is configured incorrectly?

- A. vCenter Data Collector
- B. vCenter Chargeback Data Collector
- C. vCloud Data Collector
- D. vShield Manager Data Collector

Correct Answer: D

QUESTION 17

An administrator has scheduled a report to run at 8 PM nightly and has configured a number of recipients to receive the report. After the report runs, the administrator discovers that a link to the report was sent to the recipients, not the report itself.

Why did this occur?

- A. vCenter Chargeback cannot support attachments via email.
- B. The report size was larger than the size limit configured for the SMTP server.
- C. vCenter Chargeback was configured to send links instead of attachments.
- D. The SMTP server was configured not to accept attachments.

Correct Answer: B

QUESTION 18

In a large organization, a user has 10 VMs deployed in vCloud Director, backed by a Pay-As- You-Go allocation model. The user needs to determine the charges being incurred for resource usage.

Which report type does the user need?

- A. Showback Report
- B. Usage Report
- C. Cost Comparison Report
- D. Cost Report

Correct Answer: D

QUESTION 19

An administrator attempts to delete the network named Internet but receives an error.

What is a possible reason for the error?

- A. The network named Internet is backed by a port group on a vSphere Standard Switch.
- B. The vShield Edge appliance on the external network is powered off.
- C. The administrator needs to be an Organization Administrator.
- D. The network is still in use by an Organization.

Correct Answer: D

QUESTION 20

An existing port group-backed network pool has been fully provisioned (25 out of 25 networks have been deployed).

How can an administrator provide greater capacity for creating additional Organizational Networks?

- A. Increase the number of networks in the network pool properties.
- B. Create a new network pool and attach it to the organization VDC.
- C. Create additional port groups on the vSphere Distributed Switch and add them to the network pool.
- D. Remove any configured vApp networks and re-create a larger network pool.

Correct Answer: C

QUESTION 21

An existing network isolation-backed network pool has been fully provisioned (100 out of 100 networks have been deployed).

How can an administrator provide greater capacity for a fully provisioned vApp network?

- A. Edit the properties of the vSphere Distributed Switch to increase the number of configured PVLANS.
- B. Remove any configured vApp networks and re-create a larger network pool.
- C. Increase the number of vCloud isolated networks in the network pool properties.
- D. Create a new network pool and attach it to the organization VDC.

Correct Answer: C

QUESTION 22

A vCloud administrator needs to create a network pool that will service 50 vApp networks. The network administrator requires that all vApp network traffic resides on a single VLAN.

Which network pool type will meet these requirements?

- A. VLAN-backed
- B. Port group-backed

- C. Network isolation-backed
- D. vShield Manager-backed

Correct Answer: C

QUESTION 23

An administrator needs to deploy vCloud Director to a cluster of hosts configured with an Enterprise license.

Which network pool should be created?

- A. Cisco Nexus 1000v-backed
- B. VLAN-backed
- C. vSphere port group-backed
- D. Network isolation-backed

Correct Answer: C

QUESTION 24

Which Network Pool type requires an increase in the maximum transmission unit (MTU) size?

- A. VXLAN
- B. vSphere-backed
- C. VLAN-backed
- D. vDS-backed

Correct Answer: A

QUESTION 25

In a VXLAN Network Pool implementation, what is the maximum size of the VXLAN Ethernet frame?

- A. 1550 bytes
- B. 1528 bytes
- C. 1500 bytes
- D. 9000 bytes

Correct Answer: A

QUESTION 26

An administrator creates a VLAN-backed network pool with a range of VLANs from 101-200 for use by two organizations.

How many port groups are provisioned upon completion of the network pool creation wizard?

- A. 2
- B. 0
- C. 200
- D. 100

Correct Answer: B

QUESTION 27

You have been asked to create a network for multiple vApps. For security purposes, access from outside the vCloud implementation should not be available.

Which network type would meet these requirements?

- A. External Direct

- B. vApp
- C. External Routed
- D. Isolated

Correct Answer: D

QUESTION 28

Two Organizations need to configure a network solution that allows communication between one another. The vApps deployed within the two organizations should reside on the same subnet.

Which organization network type would meet this requirement?

- A. Network Pool
- B. External Direct
- C. VLAN-backed
- D. Internal

Correct Answer: B

QUESTION 29

A vCloud administrator needs to provide tiered storage to users of a Provider Virtual Datacenter.

Where does the administrator configure the tiered storage?

- A. vCenter Server
- B. Provider Virtual Datacenter
- C. Organization
- D. Resource Pool

Correct Answer: A

QUESTION 30

An administrator needs to configure an external, direct connected Organization Network for three organizations. The Organizational vDCs are configured to use vSphere port group-backed network pools backed by a vSphere Distributed Switch.

How many port groups are created upon completion of the Organization Network creation wizard?

- A. 3
- B. 0
- C. 6
- D. 1

Correct Answer: B

QUESTION 31

An administrator needs to configure an Edge Gateway routed network for three organizations. The organizational VDCs are configured to use vSphere port group backed network pools backed by a vSphere Distributed Switch.

How many port groups are automatically created upon completion of the Organization Network creation wizard?

- A. 1
- B. 3
- C. 0
- D. 6

Correct Answer: C

QUESTION 32

An organization administrator is attempting to restart a vApp that was shut down because its runtime lease expired.

How should the administrator proceed?

- A. Renew the lease for the vApp.
- B. Move the vApp from the expired item pool.
- C. Renew the lease for the Organization.
- D. Redeploy the vApp from the template.

Correct Answer: A

QUESTION 33

An administrator learns that vApps within an organization are unable to access the Internet even though they are able to ping vApps from other organizations using the same external network. Both organizations are configured with a direct connected external network.

How should the administrator respond to this situation?

- A. Troubleshoot the physical network.
- B. Troubleshoot the vApp network.
- C. Add additional networks to the corresponding network pool.
- D. Add additional uplinks to the DVS providing the external network.

Correct Answer: A

QUESTION 34

A vCloud administrator needs to create an Organization for a tenant. This tenant should not have permission to share catalogs with other Organizations.

Which setting should the administrator select when creating this Organization?

- A. Catalog Publishing, cannot publish catalogs
- B. Catalog Publishing, isolate catalogs
- C. Catalog Publishing, cannot share catalogs
- D. Catalog Publishing, cannot distribute catalogs

Correct Answer: A

QUESTION 35

An external direct connected Org vDC Network is configured, but no traffic is being passed to the external network.

What would cause this to occur?

- A. A vSphere administrator accidentally deleted a vShield Edge appliance.
- B. The port group backing the external network was configured with a duplicate VLAN.
- C. The port group backing the external network was configured with no active uplinks.
- D. The network pool backing the external network has been exhausted.

Correct Answer: C

QUESTION 36

A vSphere administrator accidentally deletes a vShield Edge appliance.

Which option would allow a vCloud administrator to correct the issue?

- A. Use vShield Manager to redeploy the appliance.

- B. Use the Reset Network option on the affected network.
- C. Delete and recreate the associated port group.
- D. Delete and recreate the associated network pool.

Correct Answer: B

QUESTION 37

An administrator needs to create an external Organization Network that resides on a particular VLAN.

How should the administrator proceed?

- A. Create a VLAN-backed network pool.
- B. Create a network isolation-backed network pool.
- C. Create a port group on a vSphere Distributed Switch configured with the required VLAN.
- D. Create a vSphere Standard Switch with uplinks on the appropriate VLAN.

Correct Answer: C

QUESTION 38

An administrator needs to configure vApps so that they will be deleted when the vApp is stopped.

Which storage cleanup option should be selected in this situation?

- A. Strict Clean Up
- B. Move to Expired Items
- C. Delete Immediately
- D. Permanently Deleted

Correct Answer: C

QUESTION 39

An administrator needs to create an Organization vDC with a specific CPU speed for all virtual machines within an organization.

Which Organization vDC pool will allow this?

- A. Allocation Pool
- B. Reservation Pool
- C. User adjustable Pool
- D. Pay-As-You-Go Pool

Correct Answer: D

QUESTION 40

A user has been assigned a single external IP address that connects to the Internet. The user has a vApp containing 4 VMs deployed in the Organization VDC.

Which technology will allow a user's VMs to accept incoming traffic from the Internet?

- A. Firewall Rules
- B. Port Forwarding
- C. IP Translation
- D. 1:1 NAT

Correct Answer: B

QUESTION 41

An administrator needs to restrict the amount of storage that a group of users is able to use.

Which vCloud Director construct will allow this?

- A. Provider vDC
- B. Organizational vDC
- C. Storage Allocation Wizard
- D. Datastore Configuration

Correct Answer: B

QUESTION 42

An Organization vDC is close to running out of resources. An administrator needs to prevent further depletion of the Organization vDC and ensure the service levels remain unaffected.

How should the administrator proceed?

- A. Add more ESXi hosts to the cluster.
- B. Enforce vApp runtime leases.
- C. Disable the Organization vDC.
- D. Add more resources to the Provider vDC.

Correct Answer: C

QUESTION 43

An administrator needs to provide access to four network pools for use by an Organization.

How can this be accomplished?

- A. Create four Organization vDCs with access to one network pool each.
- B. Create a new virtual switch on vCenter Server and add it to the four network pools.
- C. Create four new port groups on the virtual switch backing the Organization vDC.
- D. Create one Organization vDC with access to four network pools.

Correct Answer: A

QUESTION 44

Which object provides the resources when creating an Organization vDC?

- A. External network
- B. DRS cluster
- C. Resource pool
- D. Provider vDC

Correct Answer: D

QUESTION 45

Where does the guarantee take place when configuring a Pay-As-You-Go Organization vDC and setting Memory resources guaranteed?

- A. The Provider vDC.
- B. The resource pool.
- C. The VM.
- D. The cluster.

Correct Answer: C

QUESTION 46

A multi-tier application is deployed as a vApp. The vApp is attached to an External Routed network. A load-

balancer is part of this vApp. The load balancer must be accessed from an external network. How can the load balancer be accessed from the external network?

- A. Enable IP translation.
- B. Assign External IPs.
- C. Configure Port Forwarding.
- D. Enable IP masquerading.

Correct Answer: B

QUESTION 47

A vApp is connected to an External Routed network. The vShield Edge is accidentally deleted from the vSphere and the vApp loses connectivity.

How should the administrator restore connectivity?

- A. Reset the network.
- B. Reset the vApp.
- C. Redeploy the vApp.
- D. Redeploy the vShield Edge device.

Correct Answer: A

QUESTION 48

An administrator needs to create an Organization vDC that allows consumers to manage the amount of resource over-commitment.

Which Organization vDC pool will allow this?

- A. Pay-As-You-Go Pool
- B. User adjustable Pool
- C. Reservation Pool
- D. Allocation Pool

Correct Answer: C

QUESTION 49

An administrator needs to create an Organization vDC that allows only system administrators to configure the amount of over commitment of resources.

Which Organization vDC pool will allow this?

- A. Allocation Pool
- B. Pay-as-you-go Pool
- C. User adjustable Pool
- D. Reservation Pool

Correct Answer: A

QUESTION 50

A user needs to set up VPN tunneling between two different Organizations which are connected to different external networks.

What information does the user need to complete the configuration?

- A. vCloud URL, Organization Name, Organization Admin, Password
- B. Organization URL, External Network Name, Organization Admin, Password
- C. vCloud URL, IP address of the peer end point, Organization Admin, Password
- D. Organization URL, Organization Admin, Password

Correct Answer: A

QUESTION 51

An administrator must create an Organization with virtual machines that need to be provisioned on demand and allow for over allocation. Management has indicated that the VMs should also be independent of each other.

Which storage feature of Organization vDCs will allow this?

- A. Fast Provisioning
- B. Thick Provisioning
- C. Rapid Provisioning
- D. Thin Provisioning

Correct Answer: D

QUESTION 52

A user shuts down a vApp. The vApp was connected to an Org vDC Network as External Routed.

What will happen when the vApp is shut down?

- A. vShield Manager is powered off.
- B. vShield Manager is disabled.
- C. vShield Edge is powered off.
- D. vShield Edge is disabled.

Correct Answer: C

QUESTION 53

Which vShield Edge service is enabled by default?

- A. Static Routing
- B. Site-to-Site VPN
- C. DHCP
- D. Firewall

Correct Answer: D

QUESTION 54

A system administrator is setting up a vCloud object to support vApp networking that can leverage VLANs, vSphere Port Groups, or vCloud isolated networks.

What is the system administrator creating?

- A. an External network
- B. an Organization network
- C. a Network pool
- D. a VPN tunnel

Correct Answer: C

QUESTION 55

An Organization Administrator needs to enable communication between two vApps. What is one way to configure this?

- A. Connect both vApps to a common Org vDC Network.
- B. Configure vShield Manager to establish a bridge between the two vApp networks.

- C. Configure a bridge between the vApp networks using vCloud Connector.
- D. Connect the network pools in vCloud Director to the same vSphere port groups.

Correct Answer: A

QUESTION 56

A vApp containing multiple VMs has three vApp networks. The vApp is not connected to an Org vDC Network. The VMs on each vApp network can communicate with each other but not across vApp networks. The administrator cannot add additional networks but requires communication across vApp networks.

Which method should the administrator use to identify the issue?

- A. Use IP Assignments to verify each IP address.
- B. Use a trace route tool to map the hops between the vApp networks.
- C. Use the vApp diagram tool to verify the network topology.
- D. Use a network sniffer to determine whether traffic is being received from all vApp networks.

Correct Answer: C

QUESTION 57

The vSphere cluster supporting vCloud Director is running out of memory. Additional ESXi hosts have been added to the cluster in vCenter server but the memory situation has not improved.

How can the administrator address the problem?

- A. Provision Hosts
- B. Prepare Hosts
- C. Rescan Hosts
- D. Refresh Hosts

Correct Answer: B

QUESTION 58

What happens to an external IP address mapping when a vApp is powered off?

- A. The IP address is written to the local DB.
- B. The IP address is tagged as unassigned.
- C. The IP address is removed from the pool.
- D. The IP address is released to the pool.

Correct Answer: D

QUESTION 59

An administrator needs to allocate more CPU resources to one of the departments that are assigned to use the company-wide vCloud environment.

How can the administrator address this issue?

- A. Increase the capacity of the Organization Resource Pool.
- B. Increase the capacity of Provider vDC.
- C. Increase the capacity of the Provider Resource Pool.
- D. Increase the capacity of Organization vDC.

Correct Answer: D

QUESTION 60

The requirements for a vApp include:

- NAT addressing between the Org vDC Network and the External Network.
- NAT addressing between the Org vDC Network and the vApp Network.

Which configuration meets this requirement?

- A. Fenced Dynamically or Manually Created
- B. Fenced External Routed network
- C. Direct Internal Isolated network
- D. Direct External Routed network

Correct Answer: B

QUESTION 61

A vApp Network is automatically created when connected to A.

- A. External Direct Network
- B. Edge Gateway Network
- C. Org vDC Network in isolation mode
- D. Org vDC Network in fenced mode

Correct Answer: D

QUESTION 62

How should an administrator prevent new virtual machines from being created or powered on inside a Provider vDC?

- A. Place hosts into maintenance mode in vCenter.
- B. Disable storage for the Provider vDC.
- C. Disable the Provider vDC.
- D. Place the Provider vDC in maintenance mode.

Correct Answer: C

QUESTION 63

A network pool with a network limit of 1000 has 985 networks deployed. Performance has decreased on all of the vApp networks.

What is a possible contributing factor to this issue?

- A. The wrong allocation model has been configured.
- B. There are not enough port groups.
- C. The port group is set to ephemeral binding.
- D. The MTU is configured incorrectly.

Correct Answer: D

QUESTION 64

Which configuration wizard allows you to set the highest supported hardware version for virtual machines?

- A. Creating Provider VDC
- B. Creating Organization
- C. Creating Org VDC
- D. Creating vAPPs

Correct Answer: A

QUESTION 65

It has been discovered that nearly 90% of the allocated space for an Org vDC is in use. You have been tasked to increase the amount of storage to 200GB.

Where would you accomplish this?

- A. Properties of the Org vDC. Select Storage Tab and increase to 200GB.
- B. Storage Profile in Org vDC and increase to 200GB.
- C. Storage Policies in Org vDC and extend storage 200GB.
- D. Allocation tab under Provider VDC and increase to 200GB.

Correct Answer: A

QUESTION 66

The vCloud Director agent on an ESX/ESXi host cannot be contacted, which has rendered the host unusable in vCloud Director. What's the first step you should take to resolve the issue?

- A. Repair the host
- B. Prepare the host
- C. Restart the host
- D. Disable lock-down mode on the host.

Correct Answer: A

QUESTION 67

You've been asked to merge two provider vDCs. What steps would you take to accomplish this?

- A. Right-click the Provider vDC and select Merge With then choose a second Provider vDC
- B. Create a new Provider vDC. Right-click the new provider vDC
- C. Right-click the Provider VDC and choose Add New vDC
- D. Add resources to a newly created vDC, then delete each of the old vDC's.

Correct Answer: A

QUESTION 68

Using vCloud Director, what is the first step to prevent VMs from being deployed on an ESXi host?

- A. Disable the ESXi host.
- B. Unprepare the ESXi host.
- C. Delete the ESXi host.
- D. Remove the ESXi host.

Correct Answer: A

QUESTION 69

A vCloud Service Provider is attempting to monitor a vCloud implementation with a third party utility. The utility is not able to communicate with the VMs over the vApp Network. Firewall rules on the vShield Edge device are set correctly.

Why is communication unavailable?

- A. IP Masquerading rules are not set.
- B. NAT is not automatically assigned.
- C. Static routing is not enabled.
- D. DHCP is not scoped properly.

Correct Answer: A

QUESTION 70

An administrator is unable to connect to the Internet from within the cloud and suspects a firewall setting is causing the issue.

Which troubleshooting step should the administrator take first?

- A. Open Edge Gateway Services for the External Network
- B. Open Edge Gateway Services for the Edge Gateway External Organizational network
- C. Open Edge Gateway Services for the Edge Gateway
- D. Open Edge Gateway Services for the External Direct Organizational network

Correct Answer: C

QUESTION 71

Where must an administrator place sysprep files in order for Guest OS Customizations to work on all supported versions of Windows?

- A. On the VM during vApp creation.
- B. On the vCD management cluster.
- C. In a specific location on all vCD Cells.
- D. In a specific location on the vCenter Servers.

Correct Answer: C

QUESTION 72

What must occur before NAT Mapping can be enabled?

- A. IP Masquerading must be disabled on the External Direct Network.
- B. An external IP must be assigned to the External Direct Network.
- C. An external IP must be assigned to the External Routed Network.
- D. IP Masquerading must be disabled on the External Routed Network.

Correct Answer: C

QUESTION 73

An administrator is troubleshooting an issue with a vShield Edge device. The administrator locates the following log message.

```
Oct 13 16:36:00 172.20.11.201 vse-097dec69-d600-49b6-8dd6-5f4406ab2248 kernel: DROP IN=
OUT=intif SRC=192.168.210.102 DST=192.168.110.4 LEN =64 TOS=0x00 PREC=0x00 TTL=61 ID=0
PROTO=ICMP TYPE=8 CODE=0 ID=2351 SEQ=0 MARK=0x2
```

Based on the log information, how can the administrator determine which vShield Edge device created the log entry?

- A. The DST IP address is the vShield Edge device.
- B. The vse address (vse-097dec69-d600-49b6-8dd6-5f4406ab2248) is the name of the vShield Edge device in the vSphere Client.
- C. The SRC IP address is the vShield Edge device.
- D. The vse address (vse-097dec69-d600-49b6-8dd6-5f4406ab2248) is associated with the vShield Edge device in the vSphere Client.

Correct Answer: D

QUESTION 74

An author needs to create a configuration that will modify certain aspects of each VM when deployed.

Where can the Guest OS Customization tab be found?

- A. In the properties of a vApp Template.
- B. In the properties of a VM within a deployed vCloud vApp.
- C. In the properties of a deployed vCloud vApp.

D. In the properties of a VM within a vApp Template.

Correct Answer: B

QUESTION 75

Which naming convention is used by vShield Edge devices that control fencing for a vApp network?

- A. They are named after the vApp network.
- B. They are named after the external network.
- C. They are named after the network pool.
- D. They are named after the Organization Network.

Correct Answer: A

QUESTION 76

A vShield Edge firewall allows for which communication by default?

- A. ICMP responses
- B. http requests
- C. https requests
- D. All traffic is blocked by the firewall by default

Correct Answer: A

QUESTION 77

An administrator needs to create a vApp Template that cannot be modified during deployment by any consumer.

How should the administrator proceed?

- A. Use the Make identical copy option on the vApp Template once it is stored in the Catalog.
- B. Right click on the stored vApp Template and select Locked.
- C. Use Add to Catalog on a deployed vApp and select the Make identical copy option.
- D. Ensure that the Catalog containing the vApp Template is marked as non-modifiable.

Correct Answer: C

QUESTION 78

An administrator is unable to create an Organization catalog.

What is a possible cause?

- A. The Organization has no Organization vDC associated.
- B. The Provider vDC is out of resources.
- C. The administrator is not a System Administrator.
- D. The Organization vDC is out of resources.

Correct Answer: A

QUESTION 79

vShield Edge Gateway provides the NAT and firewall capabilities for which network type?

- A. External Direct
- B. External Routed
- C. vApp
- D. Isolated

Correct Answer: B

QUESTION 80

A user needs to configure firewall rules on an Org vDC Network.

Which network type must the user deploy?

- A. External Routed
- B. Isolated
- C. vApp
- D. External Direct

Correct Answer: A

QUESTION 81

A user is troubleshooting networking connectivity and needs to enable logging.

How should the user accomplish this?

- A. Enable logging in the Firewall Rule Editor.
- B. Enable VMs to send log information to Syslog.
- C. Enable logging in the Org Admin Syslog Setting.
- D. Enable logging in the System Syslog Setting.

Correct Answer: A

QUESTION 82

A user needs to set up a VPN tunnel.

What is the minimum role that would allow a user to perform this operation?

- A. vApp Author
- B. vApp User
- C. System Administrator
- D. Organization Administrator

Correct Answer: D

QUESTION 83

A user has a vApp that requires controlled access to specific services. What needs to be deployed in the user's environment in order to fulfill this requirement?

- A. vShield Manager
- B. vShield Endpoint
- C. vShield App
- D. vShield Edge

Correct Answer: D

QUESTION 84

Where does an administrator configure the syslog server address in the vCloud Director interface?

- A. Manage and Monitor Logs
- B. Organizational Administration settings
- C. Provider vDC properties
- D. Cloud Administration settings

Correct Answer: D

QUESTION 85

A user in a vCloud needs to build a new virtual machine configuration from installation media rather than an existing template.

What must the user have access to in order to accomplish this?

- A. Installation media in the form of an OVF readily available.
- B. A CD or DVD of the installation media readily available.
- C. Installation media published to an accessible Organization Catalog.
- D. A blank template with the installation media already attached.

Correct Answer: C

QUESTION 86

Maintenance is planned on a vCenter Server that is under vCloud Director control during an upcoming outage window. There are no other components with allowed downtime. Which course of action is required to allow the remainder of the vCD environment to operate without interruption?

- A. Disable the vCenter Server which has planned maintenance from the System Settings tab.
- B. Put the management cluster in Maintenance Mode on vCenter Server.
- C. Disable the vCenter Server which has planned maintenance from the Manage & Monitor tab.
- D. Place the vCenter Server in Maintenance Mode on the Manage and Monitor tab.

Correct Answer: C

QUESTION 87

Attempting to remove a vCenter Server from vCloud Director fails.

Which configuration would cause this to occur?

- A. The Hosts that back the Provider vDCs are still enabled.
- B. There are still Provider VDCs using vCenter Server.
- C. The vCenter Server is associated with a vCloud Cell.
- D. The vCenter Server is still enabled for provisioning.

Correct Answer: B

QUESTION 88

Using a vSphere 5.x vCenter Server with vCloud Director provides which added benefit?

- A. vCloud Director gains visibility of remote vCD cells.
- B. vShield Manager provides additional functionality.
- C. vCloud Director managed VMs are protected from accidental modification.
- D. vCloud Director and vCenter Server communication is encrypted.

Correct Answer: C

QUESTION 89

When an explicit failover order has been configured on a virtual switch with multiple uplinks, what determines which uplink is used when a failover event occurs?

- A. The first available uplink that reports a positive link state
- B. The reported uptime for the surviving uplinks
- C. The next available uplink on the list
- D. The uplink with the shortest route

Correct Answer: C

QUESTION 90

When would an administrator configure the explicit failover option for a portgroup created on a virtual switch with multiple uplinks?

- A. It is required when configuring the Route based on physical NIC load option
- B. To share uplinks between vSwitches
- C. When configuring iSCSI Software Initiator multipathing
- D. If the physical switch does not support etherchannel or 802.3ad

Correct Answer: C

QUESTION 91

An administrator is creating a vSphere Standard Switch with virtual machine and VMkernel networking. The administrator has two uplinks attached to the switch and wants to make sure multiple sessions for a virtual machine can utilize both uplinks.

Which load-balancing policy will guarantee this requirement is met, even if additional management or virtual machine traffic is added to the switch in the future?

- A. Route based on IP hash
- B. Route based on source MAC hash
- C. Route based on the originating port ID
- D. Use explicit failover

Correct Answer: A

QUESTION 92

Which vSwitch or vSwitch port group policy setting allows packets to be received by a virtual machine with different destination MAC addresses than the configured MAC address?

- A. Promiscuous mode
- B. Traffic shaping
- C. Forged transmits
- D. MAC address changes

Correct Answer: D

QUESTION 93

Due to diminishing capacity, an ESXi host is added to a cluster that supports a cloud environment. A vCloud administrator notices that newly created VMs created through vCD are not utilizing the host resource.

What is the reason for this?

- A. An inventory synchronization was not performed after the new host was added to the cluster.
- B. The host was not manually added to an organizational vDC before it was utilized.
- C. The host was not prepared to be part of the vCD environment.
- D. DRS was not enabled on the cluster providing resources to the vCD environment.

Correct Answer: C

QUESTION 94

An administrator is auditing IP address use in a specific Org vDC Network.

Where will the administrator find this information?

- A. The administrator can run a Global IP Allocation report
- B. The information can be located in the IP Allocation properties for the specific Org vDC Network

- C. The information can be located in the System Properties of the Org vDC Network
- D. The administrator can run an IP Allocation report for the specific Org vDC Network

Correct Answer: B

QUESTION 95

Which statement describes the functionality of traffic shaping on a vSphere Standard Switch?

- A. vSphere Standard Switches support only egress traffic shaping.
- B. vSphere Standard Switches support both ingress and egress traffic shaping.
- C. vSphere Standard Switches support best-effort traffic shaping based on quality of service (QoS).
- D. vSphere Standard Switches support only ingress traffic shaping.

Correct Answer: A

QUESTION 96

An administrator is auditing VLAN to External Network mapping for a vCloud implementation.

Where will the administrator find this information?

- A. It is a part of the Networking view
- B. It is a part of the Virtual Network view in vCenter Resources
- C. It is a part of the External Network view
- D. It can be retrieved by generating an External Network Report

Correct Answer: C

QUESTION 97

When creating a dvPort group, which port binding option assigns a port to a virtual machine when the virtual machine is first powered on?

- A. Static binding
- B. Flexible
- C. Ephemeral
- D. Dynamic binding

Correct Answer: D

QUESTION 98

Which type of port on a secondary private VLAN can communicate with promiscuous ports and other ports that share its VLAN tag?

- A. Isolated
- B. Promiscuous
- C. Community
- D. Trunked

Correct Answer: C

QUESTION 99

An administrator needs to remove an existing external network and redeploy the resources. Selecting Delete Network fails.

What could cause this issue?

- A. All Org vDC Networks that rely on the network must be deleted first.
- B. The external network specification must be deleted first.
- C. All Organization vDCs that rely on the network must be deleted first.