



VCP550^{Q&As}

VMware Certified Professional - Data Center Virtualization

Pass VMware VCP550 Exam with 100% Guarantee

Free Download Real Questions & Answers **PDF** and **VCE** file from:

<https://www.passapply.com/VCP550.html>

100% Passing Guarantee
100% Money Back Assurance

Following Questions and Answers are all new published by VMware
Official Exam Center

-  **Instant Download** After Purchase
-  **100% Money Back** Guarantee
-  **365 Days** Free Update
-  **800,000+** Satisfied Customers





QUESTION 1

An administrator needs to create an alarm to monitor when a specific ESXi host in an HA/DRS cluster becomes disconnected from other vSphere components like HA agents or the vCenter server. Which process must the administrator use to accomplish this?

- A. Define a Host type alarm, monitor for the event Cannot connect host, and supply a conditional trigger on Host name equal to a specific label.
- B. Define a Cluster type alarm, monitor for the event Cannot connect host, and supply a conditional trigger on Host name equal to a specific label.
- C. Define a Cluster type alarm, monitor for the event Host status changed, and supply a specific label for each host.
- D. Define a Host type alarm, monitor for the condition Host status changed, and supply a specific label for each host.

Correct Answer: A

QUESTION 2

What are two features provided by VMFS5? (Choose two.)

- A. Support for greater than 2TB storage devices for only VMFS and Physical RDMs
- B. Support for up to 32 extents
- C. Support for greater than 2TB storage devices for VMFS, Physical and Virtual RDMs
- D. Support for up to 64 extents

Correct Answer: BC

QUESTION 3

A vSphere administrator needs to configure a virtual machine to meet a guaranteed CPU performance profile. Which configuration setting could the administrator choose?

- A. Set the CPU Limit to High
- B. Set the CPU Shares to 500MHz
- C. Set the CPU Guarantee to High
- D. Set the CPU Reservation to 500MHz

Correct Answer: D



QUESTION 4

An administrator needs to deploy a vSphere solution containing a number of hosts and a vSphere Distributed Switch. Which steps should the administrator take to accomplish this?

- A. Create the vSphere Distributed Switch, deploy the ESXi hosts, and then add each host to the switch.
- B. Deploy the ESXi hosts, create an HA/DRS cluster containing the hosts, create the vSphere Distributed Switch, and then add the cluster to the switch.
- C. Create the vSphere Distributed Switch and as each ESXi host is deployed it will be automatically added to the switch.
- D. Deploy the ESXi hosts and then create the vSphere Distributed Switch on the hosts.

Correct Answer: A

QUESTION 5

An administrator is deploying vSphere 5.5. The administrator creates a vSphere Distributed Switch, then uses Auto Deploy to deploy several ESXi hosts. After the hosts are deployed, the administrator notices that LACP packets are not being sent between them.

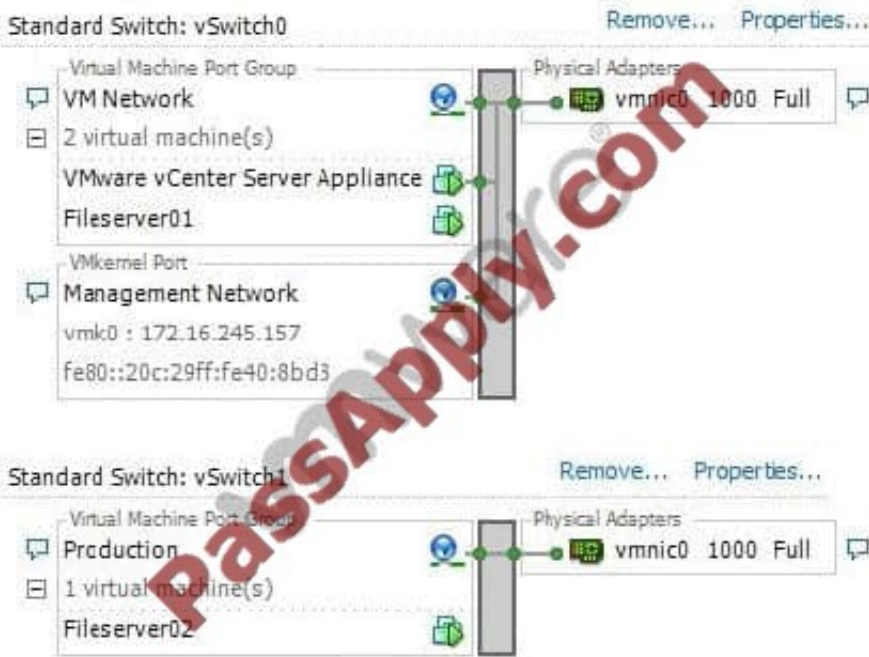
Which condition would cause this issue to occur?

- A. The LACP support settings do not exist in the Host Profile.
- B. The LACP installation bundle is not included in the Image Profile.
- C. The LACP setting is not enabled on vCenter Server.
- D. LACP has not been configured on the Auto Deploy server.

Correct Answer: A

QUESTION 6

-- Exhibit -



-- Exhibit -The virtual machine Fileserver01 shown in the exhibit can not ping anything on the Internet.

Why is Fileserver01 unable to connect to the Internet?

- A. Fileserver01 does not have a reachable IP address.
- B. Fileserver01 is not on the Production network.
- C. The virtual nic for Fileserver01 has a speed or duplex mismatch.
- D. The vSwitch1 virtual switch does not have an attached vmnic adapter.

Correct Answer: A

QUESTION 7

Which two precautions should a vSphere administrator take before increasing the size of a VMFS datastore? (Choose two.)

- A. Unmount the datastore
- B. Perform a rescan to ensure that all hosts see the most current storage
- C. Quiesce I/O on all disks involved
- D. Shut down all virtual machines stored in the datastore

Correct Answer: BC



QUESTION 8

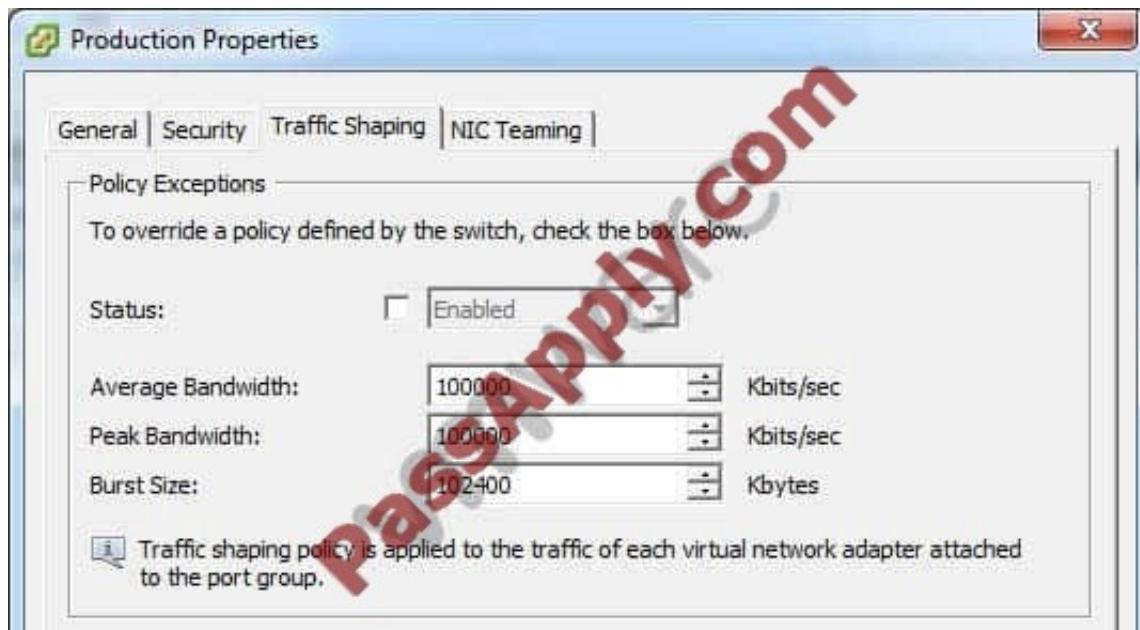
Which controller is recommended for high disk I/O workloads?

- A. BusLogic Parallel
- B. LSI Logic Parallel
- C. LSI Logic SAS
- D. VMware Paravirtual

Correct Answer: D

QUESTION 9

-- Exhibit -



-- Exhibit -

An administrator determines that traffic shaping does not appear to be working on Production, a virtual machine port group on vSwitch1. Traffic shaping is working on all

other port groups on the switch.

The administrator examines the Traffic Shaping settings as shown in the exhibit:

What should the administrator do to resolve the problem?

- A. Select the Status checkbox to enable Traffic Shaping on the portgroup.
- B. Reduce the Average Bandwidth to 50% of the Peak Bandwidth.
- C. Reduce the Burst Size to 50% of the Peak Bandwidth.



D. Click the Security tab and create the necessary security exception.

Correct Answer: A

QUESTION 10

An administrator has deployed vSphere Data Protection and wants to configure several virtual machine backup jobs. When using the vSphere client on a Windows 7 desktop, the administrator notices that there is no icon for vSphere Data Protection in the Solutions and Applications area of the vSphere client.

What is the reason the administrator is unable to access vSphere Data Protection from the vSphere client on their desktop?

- A. The vSphere Data Protection client plug-in is not installed on the administrator's desktop.
- B. Accessing vSphere Data Protection requires the use of the vSphere Web Client.
- C. The vSphere Data Protection plug-in is disabled in the vSphere Client on the administrator's desktop.
- D. The administrator's desktop does not have connectivity to the vSphere Data Protection virtual appliance.

Correct Answer: B

QUESTION 11

A vSphere administrator is performing maintenance on a group of ESXi 5.5 hosts when an error message displays indicating that the ramdisk is full. The two hosts reporting the problem were deployed with Auto Deploy.

What should the administrator do to resolve this issue?

- A. Redirect host logs to an NFS store
- B. Disable the System Logs through the host DCUI
- C. Decrease the maximum host log file size to 10240KB
- D. Move the ramdisk to an SSD drive

Correct Answer: A

QUESTION 12

A server administrator reports that a virtual machine has displayed the following message twice in the past 12 months:

No boot device found



Which virtual machine boot option should the administrator configure to resolve this issue?

- A. Failed Boot Recovery
- B. Force BIOS Setup
- C. Boot Delay
- D. Network Boot Retry

Correct Answer: A

QUESTION 13

A vSphere administrator deleted a vApp from disk. A second administrator needs the virtual machines that were contained in the vApp. What should the first administrator do to make the virtual machines available?

- A. Recover the virtual machines from backup
- B. Add the virtual machines back into inventory
- C. Undelete the vApp
- D. Recover the virtual machines from Stranded Items

Correct Answer: A

QUESTION 14

A Distributed Resource Scheduler (DRS) cluster is displaying a message that recommends the migration of virtual machines, even though the cluster is currently balanced. What is the likely reason for this?

- A. The DRS cluster does not satisfy the resource pool reservations.
- B. The DRS cluster is not configured with shared storage.
- C. The DRS cluster is in a critical state.
- D. The DRS cluster contains hosts with CPU compatibility issues.

Correct Answer: A

QUESTION 15

The bandwidth between two sites is too slow to transfer large virtual machine files. The administrator needs to export a



virtual machine to OVF to reduce the size of the transfer.

When the administrator attempts to initiate the Export OVF Template feature, the selection is grayed out.

What is the likely reason that the administrator is unable to select this option?

- A. The virtual machine is in a powered on state.
- B. There is not enough disk space on the destination for the OVF.
- C. The administrator's account does not have the correct privileges.
- D. The virtual machine is not compatible with the OVF format.

Correct Answer: A

QUESTION 16

A security team is validating policy settings in a vSphere environment.

By default, which security policy is set to reject on a vSphere Standard Switch?

- A. Promiscuous mode
- B. MAC address changes
- C. Forged transmit
- D. Use explicit failover

Correct Answer: A

QUESTION 17

The vSphere administrator needs to migrate a virtual machine from one ESXi 5.5 host to another ESXi 5.5 host. The virtual machine has a virtual disk that is stored in local storage. Assuming only the vSphere Essentials licensing is in place, which technique should the administrator use to accomplish the migration?

- A. vMotion migration
- B. Cold migration
- C. Enhanced vMotion migration
- D. Storage vMotion migration

Correct Answer: B



QUESTION 18

Which tool should an administrator use to modify vSphere Data Protection (VDP) backup jobs?

- A. vSphere Web Client
- B. vSphere Client using the VDP plugin
- C. VAMI on the VDP Appliance
- D. vSphere Management Appliance

Correct Answer: A

QUESTION 19

Which statement is accurate when choosing the storage controller for a virtual machine using the Create New Virtual Machine wizard in custom mode?

- A. There is a predetermined controller based on the guest OS, which cannot be changed.
- B. A controller is recommended based on the guest OS type. The administrator can choose this controller or select any other.
- C. There is a predetermined controller based on the guest OS, which can only be changed after the virtual machine is deployed.
- D. The controller options presented will be based on the guest OS type. The administrator must choose one of these options.

Correct Answer: B

QUESTION 20

A vSphere administrator is unable to vMotion a virtual machine between two hosts. An error message indicates that the USB device is not accessible on the target host. What is causing this issue?

- A. The USB device was not enabled for vMotion when it was added to the virtual machine.
- B. ESXi does not support vMotion with a USB device attached to the virtual machine.
- C. The VMkernel port for vMotion is not enabled for USB traffic.
- D. The virtual machine has the wrong USB controller installed.

Correct Answer: A



QUESTION 21

An organization is designing a new vSphere cluster to support a new product implementation. The following challenges have been identified by the vSphere administration team:

The organization has the vSphere Enterprise License.

The network team needs to gather virtual machine network statistics over a long period of time.

The network team needs the ability to quickly assess virtual machine traffic in the event of an attack.

The network team has previously had problems implementing manual etherchannel configurations on their physical switches, resulting in production outages.

The new cluster's initial size is 15 hosts.

The organization is willing to upgrade to vSphere Enterprise Plus licensing if it addresses these challenges.

Which three features of a version 5.5 vSphere Distributed Switch would address these challenges? (Choose three.)

A.

LACP in Dynamic Mode

B.

Port Mirroring

C.

Network vMotion

D.

Private VLANs

E.

Network I/O Control

Correct Answer: ABC

QUESTION 22

While troubleshooting a crash event on an ESXi 5.x host, an administrator determines the log files related to the event are NOT present. Which action should the administrator take to resolve the logging issue?

A. Increase the amount of memory committed to log storage.



- B. Increase the statistic data collection level to 4.
- C. Change the roll-up type to maximum.
- D. Create a persistent scratch location.

Correct Answer: D

QUESTION 23

A vSphere administrator needs the ability to adjust the amount of guaranteed physical CPU and Memory resources to a virtual machine without incurring application downtime. Which actions must the administrator perform?

- A. Enable CPU hotplug and Memory hotplug on the virtual machine.
- B. Adjust the number of CPUs and the Memory Configuration for the virtual machine.
- C. Adjust the CPU reservation slider and click the Reserve all Guest Memory checkbox.
- D. Adjust the CPU and Memory reservation sliders on the virtual machine.

Correct Answer: D

QUESTION 24

Which two features are different between VDP and VDPA? (Choose two.)

- A. Support for guest level backups of SQL and Exchange
- B. Ability to perform file level recovery
- C. Virtual machines supported per appliance
- D. Support for image level backups

Correct Answer: AC

QUESTION 25

Which two CPU features enable the use of 64-bit virtual machines? (Choose two.)

- A. Intel VT
- B. NX/XD Bit
- C. Hyper-threading



D. AMD RVI

Correct Answer: AD

QUESTION 26

A vApp is performing poorly and an administrator determines that the memory resources are low. How should the administrator resolve this issue?

- A. Configure a memory reservation for the vApp.
- B. Configure a memory reservation for each VM in the vApp.
- C. Rebuild the vApp using the wizard and assign memory reservations to the vApp.
- D. Rebuild the vApp using the wizard and assign memory reservations to each VM.

Correct Answer: A

QUESTION 27

An ESXi 5.x host disconnects within 60 seconds after the administrator adds it to the vCenter Server inventory. The administrator determines that the issue could be related to a networking problem. Which networking port should the administrator check for connectivity from the host to vCenter Server?

- A. 902
- B. 903
- C. 443
- D. 9443

Correct Answer: A

QUESTION 28

A customer needs a datastore to be seen across multiple vSphere clusters with applications inside of the virtual machines that must detect the physical characteristics of the storage device. Which type of virtual disk meets this requirement?

- A. A virtual disk on a VMFS datastore
- B. A raw device mapped disk in virtual compatibility mode
- C. A raw device mapped disk in physical compatibility mode



D. A virtual disk on an NFS datastore

Correct Answer: C

QUESTION 29

A vSphere administrator can create an alarm on which two objects? (Choose two.)

- A. LUN
- B. Datastore
- C. Template
- D. Folder

Correct Answer: BD

QUESTION 30

What should an administrator do to identify compliance for virtual machine storage performance?

- A. Create a Storage Policy and apply it to the virtual machine
- B. Create Storage Capabilities and apply one or more capabilities to the virtual machine
- C. Create a Storage Policy and apply it to the datastore containing the virtual machine
- D. Create Storage Capabilities and apply one or more capabilities to the datastore containing the virtual machine

Correct Answer: A

QUESTION 31

A vSphere administrator needs to configure the environment to send a notification to a monitored email address every time a vSphere alarm is triggered. Which procedure should the administrator use to accomplish the task?

- A. Use the vSphere web client to configure the vCenter Server SMTP settings. Edit the alarm action to send a notification email.
- B. Use the vSphere web client to configure the vCenter Server SNMP settings. Edit the alarm action to send a notification email.
- C. Use the vSphere web client to create a vCenter Server scheduled task that will send a notification email when an alarm is triggered.
- D. Use the vSphere web client to create a vCenter Orchestrator workflow that will send a notification email when an



alarm is triggered.

Correct Answer: A

QUESTION 32

An administrator needs to create an IP allocation policy for a multi-tiered application running in a vApp.

The IP addresses should be allocated automatically by vCenter Server, but should not be released even if a virtual machine is powered off.

Which IP allocation model should the administrator use for the vApp?

- A. Static - Manual
- B. Transient - IP Pool
- C. DHCP
- D. Static - IP Pool

Correct Answer: D

QUESTION 33

Before upgrading from vCenter 4.x to 5.x, an administrator runs the vCenter Host Agent Pre-Upgrade Checker. The Checker reports an issue. What would cause the vCenter Host Agent Pre-Upgrade Checker to report an issue?

- A. The .NET framework 3.5 is installed.
- B. The host network card is only 1 Gbps.
- C. The file system is not intact.
- D. The VMFS file system is version 4.0.

Correct Answer: C

QUESTION 34

An administrator decreases the CPU share value for two virtual machines in a DRS cluster from 1000 to 100 shares. The DRS cluster contains more resources than both virtual machines can consume. The characteristics of the virtual machines are listed below:

The second virtual machine is a clone of the first virtual machine.

Both virtual machines are identical in every way.



Both virtual machines are not attached to the IP network.

Both virtual machines are powered on.

What impact on the virtual machines' performance will be observed?

A.

The virtual machines will have equal performance under all conditions.

B.

The performance of the virtual machines will reduce by a factor of ten once the share value is adjusted.

C.

The virtual machines will have equal performance under normal conditions and reduced performance when contention occurs.

D.

The original virtual machine will perform better than the clone when contention occurs.

Correct Answer: A

QUESTION 35

What should an administrator do to configure multi-pathing using software iSCSI?

A. Bind the VMkernel ports to the software iSCSI initiator

B. Configure Zoning between the hosts and SAN switches

C. Configure NIC teaming on the associated uplinks

D. Ensure jumbo frames are enabled end-to-end

Correct Answer: A

QUESTION 36

An administrator needs to unmount a datastore that is also used for HA storage heartbeats.

What is the least disruptive method for an administrator to perform this activity on a slave HA host?

A. On the Datastore Heartbeating tab, unmount the datastore normally and confirm a new datastore has been selected.

B. On the Datastore Heartbeating tab, specify an alternate datastore, then unmount the datastore normally.

C. Disable HA datastore heartbeats, then unmount the datastore.



D. Reduce the number of heartbeat datastores, then remove the datastore from the heartbeat list.

Correct Answer: B

QUESTION 37

An error occurs while building a new virtual machine with a thin provisioned virtual disk size of 20GB. The datastore has 35GB of free space. The datastore is overcommitted by 95GB. What is preventing the virtual machine from being built?

- A. The datastore is built on a thin provisioned LUN that has run out of storage array free space.
- B. The datastore has reached the maximum overcommitment threshold.
- C. The virtual disk used by the virtual machine cannot be thin provisioned on this datastore.
- D. The virtual disk used by the virtual machine requires more free space than is available in the datastore.

Correct Answer: A

QUESTION 38

Which feature requires an administrator to configure an RDM with Virtual Compatibility Mode?

- A. vMotion
- B. Virtual Machine Snapshots
- C. High Availability
- D. N-port ID Virtualization

Correct Answer: B

QUESTION 39

An administrator is using esxtop to troubleshoot a storage performance issue.

Which parameter should the administrator check to monitor any storage-related vSphere overhead?

- A. DAVG
- B. KAVG
- C. GAVG
- D. CMDS



Correct Answer: B

QUESTION 40

An administrator has configured a vSphere 5.5 test environment to evaluate the Virtual SAN feature using Automatic Mode Disk Groups. The administrator needs to disable the Virtual SAN cluster while preserving the virtual machines running on that cluster.

The administrator has already installed a vSphere 5.5 Client on a Windows 7 desktop and also has access to the vSphere 5.5 Web Client.

What should the administrator do to disable the Virtual SAN?

- A. Use Storage vMotion to migrate the virtual machines to another datastore then use the vSphere 5.5 Client to disable the Virtual SAN.
- B. Use Storage vMotion to migrate the virtual machines to another datastore then use the vSphere 5.5 Web Client to disable the Virtual SAN.
- C. Use the vSphere 5.5 Client to disable the Virtual SAN, which will automatically migrate the virtual machines via the Storage DRS feature.
- D. Use the vSphere 5.5 Web Client to disable the Virtual SAN, which will automatically migrate the virtual machines via the Storage DRS feature.

Correct Answer: B

[VCP550 PDF Dumps](#)

[VCP550 VCE Dumps](#)

[VCP550 Study Guide](#)



To Read the [Whole Q&As](#), please purchase the [Complete Version](#) from [Our website](#).

Try our product !

100% Guaranteed Success
100% Money Back Guarantee
365 Days Free Update
Instant Download After Purchase
24x7 Customer Support
Average 99.9% Success Rate
More than 800,000 Satisfied Customers Worldwide
Multi-Platform capabilities - [Windows](#), [Mac](#), [Android](#), [iPhone](#), [iPod](#), [iPad](#), [Kindle](#)

We provide exam PDF and VCE of Cisco, Microsoft, IBM, CompTIA, Oracle and other IT Certifications. You can view Vendor list of All Certification Exams offered:

<https://www.passapply.com/allproducts>

Need Help

Please provide as much detail as possible so we can best assist you.
To update a previously submitted ticket:



| | | |
|---|---|--|
|  <p>One Year Free Update Free update is available within One Year after your purchase. After One Year, you will get 50% discounts for updating. And we are proud to boast a 24/7 efficient Customer Support system via Email.</p> |  <p>Money Back Guarantee To ensure that you are spending on quality products, we provide 100% money back guarantee for 30 days from the date of purchase.</p> |  <p>Security & Privacy We respect customer privacy. We use McAfee's security service to provide you with utmost security for your personal information & peace of mind.</p> |
|---|---|--|

Any charges made through this site will appear as Global Simulators Limited.
All trademarks are the property of their respective owners.
Copyright © passapply, All Rights Reserved.