



VCP-510^{Q&As}

VMware Certified Professional on VSphere 5

Pass VMware VCP-510 Exam with 100% Guarantee

Free Download Real Questions & Answers **PDF** and **VCE** file from:

<https://www.passapply.com/vcp-510.html>

100% Passing Guarantee
100% Money Back Assurance

Following Questions and Answers are all new published by VMware
Official Exam Center

- ⚙ **Instant Download** After Purchase
- ⚙ **100% Money Back** Guarantee
- ⚙ **365 Days** Free Update
- ⚙ **800,000+** Satisfied Customers





QUESTION 1

What two statements are true about Fibre Channel zoning? (Choose two.)

- A. Zones define paths to a Fibre Channel array
- B. Zones control access to LUNs on a Fibre Channel storage array
- C. Zones can be soft or hard
- D. Zones can be configured on an array or ESXi host

Correct Answer: AC

QUESTION 2

Which resource management technique can be used to relieve a network bottleneck caused by a virtual machine with occasional high outbound network activity?

- A. Convert the switch from a vSphere Standard Switch to a vSphere Distributed Switch.
- B. Create a new port group for the virtual machine and enable traffic shaping.
- C. Apply traffic shaping to the other virtual machines in the same port group.
- D. Apply traffic shaping to the virtual machine with high activity.

Correct Answer: B

QUESTION 3

Which three tasks can be selected from the home page of an ESXi 5.x host? (Choose three.)

- A. Browse objects managed by the host
- B. Browse NFS mounts for this host
- C. Download VMware vCenter or the vSphere client from vmware.com
- D. Shutdown or restart the host
- E. Download the PowerCLI installer

Correct Answer: ABC

QUESTION 4

Which two types of information can be obtained about a VMFS datastore using the Summary tab for a connected host in the vSphere Client? (Choose two.)



- A. Multipathing status for the datastore
- B. Hardware Acceleration status
- C. Alarm Actions status for the datastore
- D. Runtime name of the datastore

Correct Answer: BC

QUESTION 5

Where are IP addresses for a vSphere Storage Appliance (VSA) cluster managed?

- A. On each VSA appliance using a web-based portal
- B. On the VSA Manager tab for the cluster hosting VSA
- C. On the VSA Manager appliance using a web-based portal
- D. On the vCenter server installed on a VSA host

Correct Answer: B

QUESTION 6

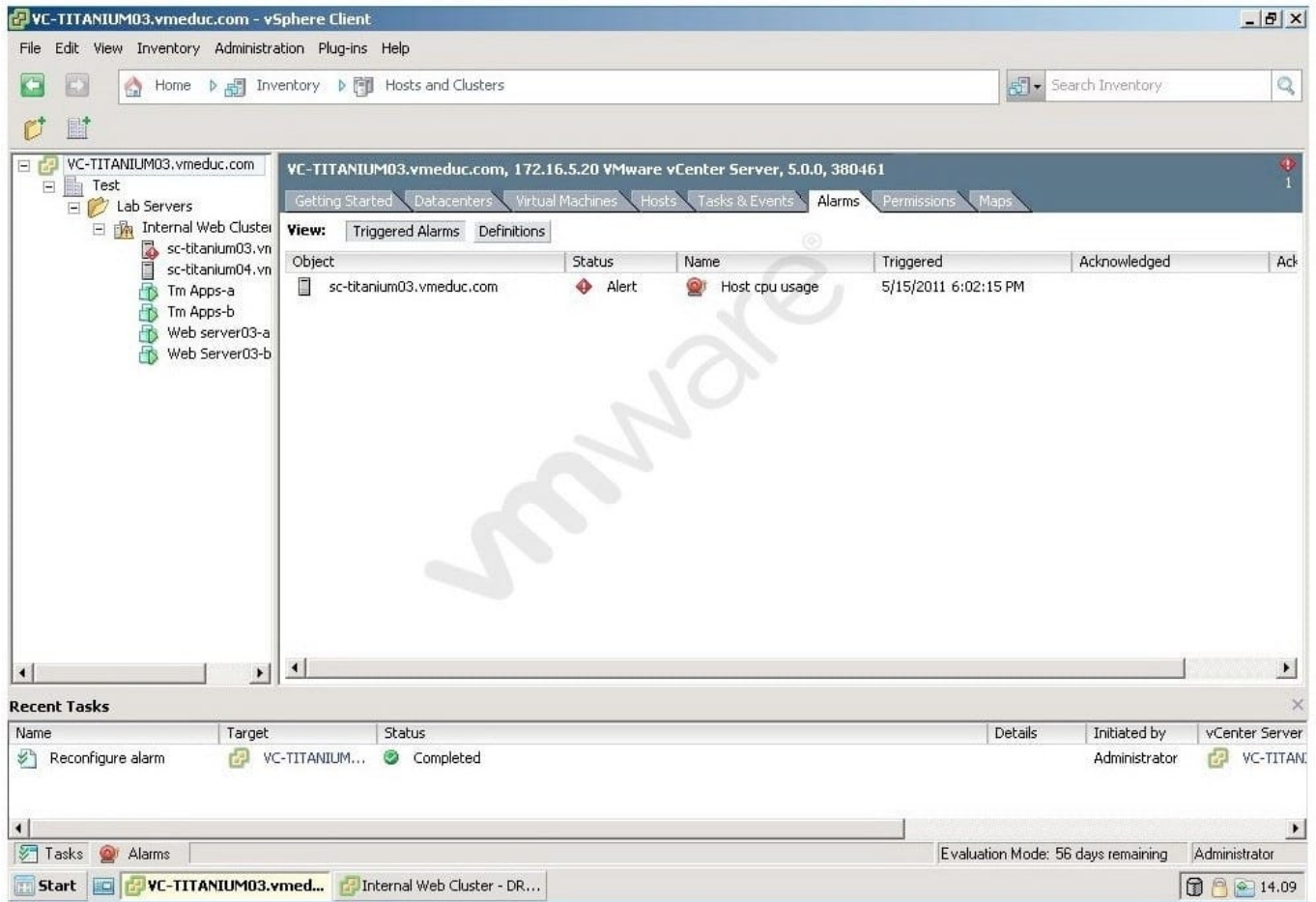
When using a hardware iSCSI initiator with an ESXi host, which two tasks are performed by VMKernel? (Choose two)

- A. Encapsulation of iSCSI PDUs TCP/IP packets
- B. Mapping requests for blocks on the virtual disk to blocks on the appropriate physical device
- C. Issuing iSCSI commands to the virtual disk
- D. Encapsulation of I/O requests into iSCSI Protocol Data Units (PDUs)

Correct Answer: BC

QUESTION 7

Click the Exhibit button. Users are having difficulty accessing a Web server since a new Web application was configured in a virtual machine running on sc-titanium03.vmeduc.com. The web server has been assigned 1 vCPU. The vSphere Client reports the error shown in the exhibit. DRS is set to fully automated mode, but the problem has not resolved. Which action can resolve the issue?



- A. Set a CPU reservation for the web server VM.
- B. Manually move the Virtual Machine using high priority vMotion.
- C. Configure the DRS Migration Threshold to Aggressive.
- D. Set CPU affinity for the virtual machine.

Correct Answer: A

QUESTION 8

An administrator notices that the database virtual machines fail to backup within the backup window. Each database virtual machine has 4 vCPUs, 16GB RAM and 12 virtual disks. There are 16 database virtual machines to backup using 8 backup jobs. Which is the simplest way to improve the backup performance for these virtual machines?

- A. Add a backup job for each virtual machine.
- B. Set a 16GB reservation for each virtual machine.
- C. Add 1MB VMDK drives at 1.0, 2.0 and 3.0 on the vDR appliance.
- D. Upgrade the array to 8GB FCP and ensure multipathing is configured properly.



Correct Answer: C

QUESTION 9

What reasons would prevent an administrator from deploying a virtual machine from a template? (Choose two.)

- A. The template is missing the .vmx configuration file.
- B. The vSphere Client is connected to an ESXi host.
- C. The template is listed as Orphaned.
- D. The administrator is using the vSphere Web Client.

Correct Answer: BC

QUESTION 10

A vSphere 5 implementation consists of a fully automated DRS cluster with two ESXi 5.x hosts with the following vSphere Standard Switch configuration.

1.

Switch A . three vmnics, one port group named sFTP-PG

2.

Switch B . two vmnic, one port group named Web-PG

3.

All vmnics are trunked to the same physical switch.

DRS has been configured with an anti-affinity rule for all virtual machines in the Web-PG so that no more than half of the virtual machines run on any given host. The virtual machines on WebPG are experiencing significant network latency. The network team has determined that a performance bottleneck is occurring at the ESXi host level. Which solution will require the least amount of administrative work and the least amount of service interruption?

- A. Migrate Web-PG to Switch A and sFTP-PG to Switch B on each host
- B. Move a vmnic from Switch A to Switch B on each host
- C. Convert the three Switch Bs to a single vSphere Distributed Switch
- D. Use vMotion to redistribute some of the VMs in Web-PG to a different ESXi host

Correct Answer: B

QUESTION 11

An administrator uses VMware Data Recovery to make backups of virtual machines. Checking on the backup jobs that



were run the previous evening, the administrator notices that some jobs completed but that other jobs did not. What are two possible causes for the failure? (Choose two.)

- A. The deduplication store had 400GB of available space before the start of the affected jobs.
- B. Eight backup jobs were running simultaneously, causing new jobs to fail to start.
- C. The backup window was not open long enough to retrieve all of the changed blocks.
- D. CPU utilization on the VDR appliance exceeded 90% before one or more jobs executed.

Correct Answer: BD

QUESTION 12

What is a valid example of a vSphere Update Manager upgrade?

- A. A VMware Tools upgrade on a Fault Tolerant machine with automatic snapshots.
- B. Upgrading and patching multiple ESXi hosts simultaneously in a selected cluster.
- C. Upgrading an ESX 4.1 host to ESXi 5.x with a sufficient boot partition.
- D. An ESXi 5.x host update with automatically deleted snapshots.

Correct Answer: C

QUESTION 13

Which is the most secure method of connecting to an iSCSI storage array using an independent hardware iSCSI adapter?

- A. One-way CHAP
- B. Mutual CHAP
- C. Per-target CHAP
- D. Per-subnet CHAP

Correct Answer: A

QUESTION 14

Acme Disposal Services is a large company which has many administrators. For auditing purposes, each administrator must use a unique account to access ESXi Standard hosts. Which two actions satisfy this requirement and require the least amount of administrative effort? (Choose two.)

- A. Configure Authentication Services for Active Directory based authentication to the ESXi hosts
- B. Configure a unique root level account for each administrator using the vSphere Client

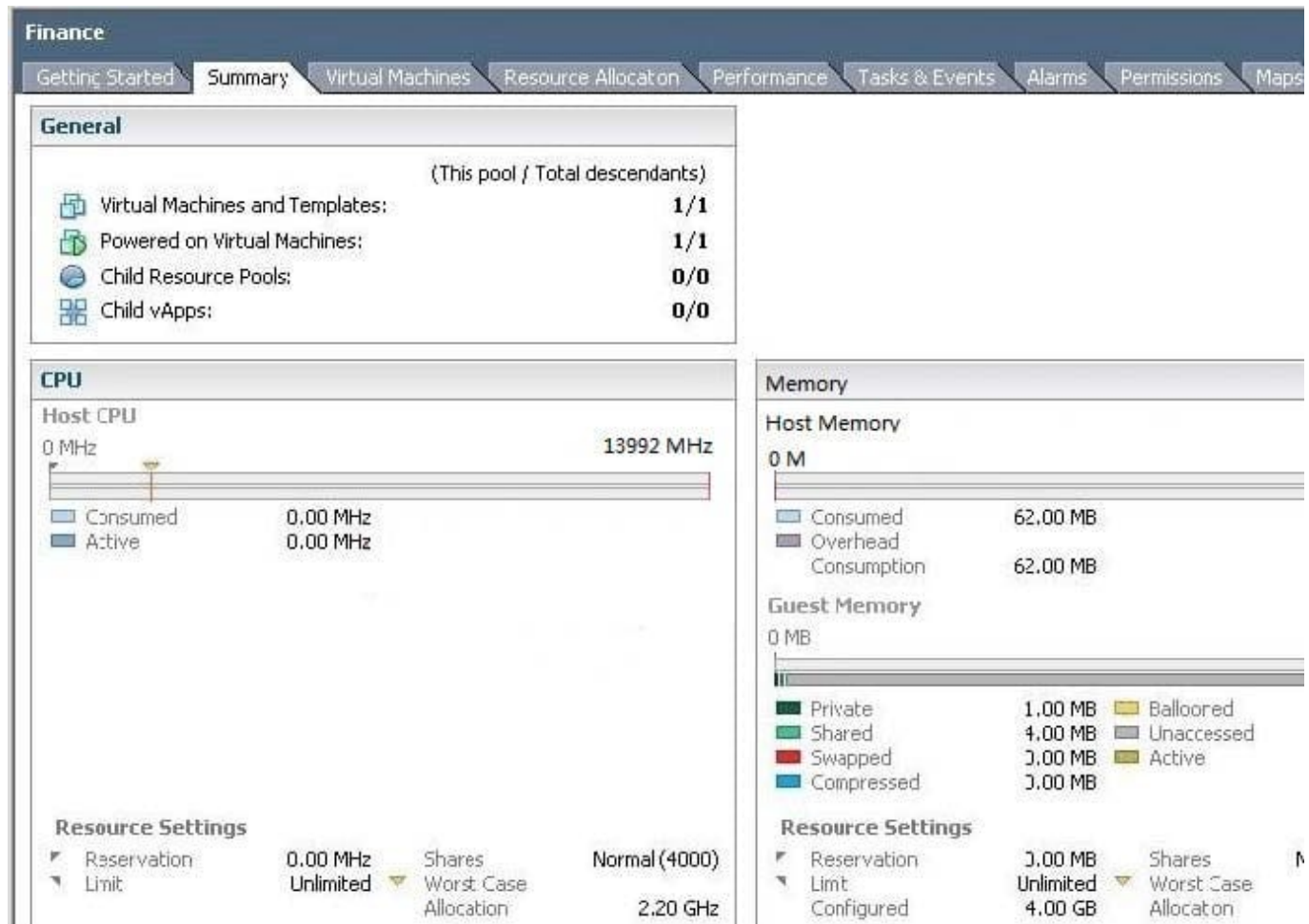


- C. Configure user accounts in a host profile, then apply the host profile to the ESXi hosts
- D. Configure Active Directory group ESX Admins with each administrator's AD account

Correct Answer: AD

QUESTION 15

Click the Exhibit button. Assuming that this is the only virtual machine and the only resource pool, what is the maximum amount of memory that can be configured for use by the virtual machine that is part of the finance resource pool?



- A. 16,384 MB, less virtual machine overhead
- B. 57 MB less virtual machine overhead
- C. 3,009 MB, less virtual machine overhead
- D. 13,375 MB, less virtual machine overhead

Correct Answer: C