

100% Money Back
Guarantee

Vendor: EMC

Exam Code: E20-532

Exam Name: Networked Storage SAN Specialist Exam
for Storage Administrators

Version: Demo

QUESTION 1

Which Cisco tool is used to monitor, configure and manage multiple MDS switches?

- A. Device Tools
- B. SAN Manager
- C. Fabric Manager
- D. Connectrix Manager

Correct Answer: C

QUESTION 2

A customer has plugged a new host into his SAN but cannot see the HBA WWNs appear in the Topology. What are two [2] ways to resolve?

- A. Reset the switch
- B. Rediscover the switch
- C. Enable SNMP on the switches
- D. Install the Host Agent and wait for the host to be discovered

Correct Answer: BD

QUESTION 3

Which database service needs to be verified if EMC VisualSAN 4.0 displays errors on program start?

- A. Oracle 8i
- B. Informix 9
- C. Sybase 11
- D. SQL Server 2000

Correct Answer: D

QUESTION 4

Which two [2] management tools have SAN zoning capabilities in a McDATA environment?

- A. Connectrix Manager
- B. Fabric Control Watch
- C. Embedded Web Server
- D. Storage Virtualization Control

Correct Answer: AC

QUESTION 5

From Connectrix Manager, which two [2] levels of user rights can be assigned to specific users?

- A. Fabric Administrator
- B. System Administrator
- C. Product Administrator
- D. Configuration Administrator

Correct Answer: BC

QUESTION 6

Which version of HBA firmware must be used with PowerPath?

- A. Current HBA firmware

- B. Firmware shipped with HBA
- C. Latest HBA Firmware from vendor
- D. Current approved EMC HBA firmware

Correct Answer: D

QUESTION 7

In the OSI 7-layer Network Model, which layer describes the cabling used to create Fibre Channel SANs?

- A. Layer 1, Physical
- B. Layer 2, Data Link
- C. Layer 3, Network
- D. Layer 6, Presentation

Correct Answer: A

QUESTION 8

What is the recommended minimum amount of memory in a management station for an EMC VisualSAN 4.0 installation in a mid-sized SAN?

- A. 256 MB
- B. 512 MB
- C. 1 GB
- D. 2 GB

Correct Answer: C

QUESTION 9

How many buffer-to-buffer (BB) credits can be used on ports 4-23 in a DS-24M2 switch?

- A. 5
- B. 12
- C. 24
- D. 60

Correct Answer: A

QUESTION 10

Which native command on a B-series switch will provide data for EMC Customer Service?

- A. showtech
- B. supportshow
- C. supportlogs
- D. switchsupport

Correct Answer: B

QUESTION 11

A new HBA is added to a Sun Solaris host. After a reconfiguration reboot, the new HBA is logged into the FA port on the Symmetrix, but it cannot see any devices. Which two [2] must be verified?

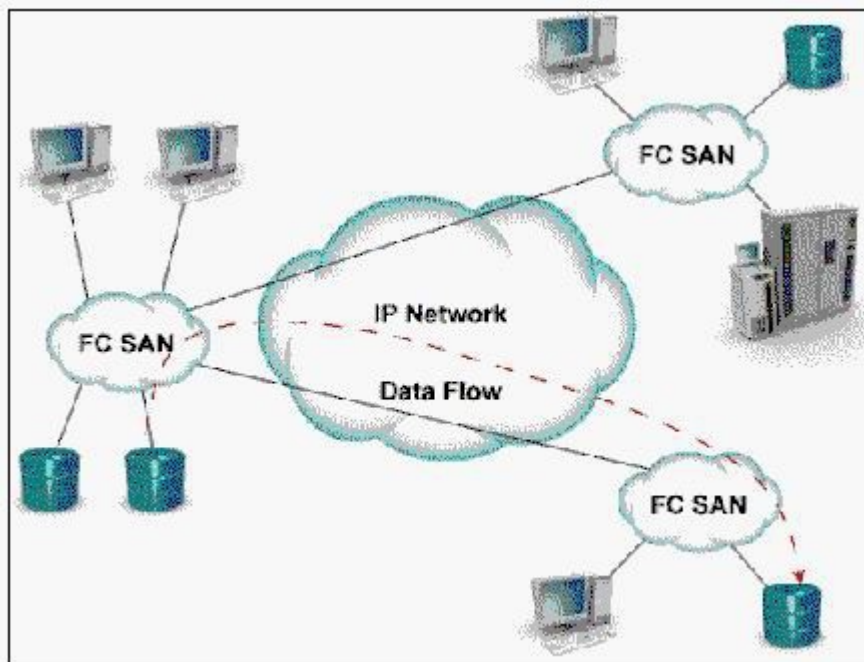
- A. Correct HBA WWN and FA association exists in the VCMDDB
- B. LUN number conversion from hexadecimal to decimal in the sd.conf file
- C. LUN number conversion from decimal to hexadecimal in the sd.conf file
- D. LUN number conversion from hexadecimal to decimal in HBA driver configuration file on the host

Correct Answer: AB

QUESTION 12

Click the Exhibit button.

What is represented by data flow in the picture?



- A. FCIP representation of remote DR
- B. ISCSI representation of remote DR
- C. FCIP representation of remote backup
- D. ISCSI representation of remote backup

Correct Answer: A

QUESTION 13

Which command is used to backup the configuration of a Brocade switch?

- A. backupConfig
- B. configUpload
- C. configDownload
- D. firmwareDownload

Correct Answer: B

QUESTION 14

Which MDS-9000 director/switch is capable of supporting the emerging 10Gb bandwidth?

- A. 9140
- B. 9216
- C. 9509
- D. 9549

Correct Answer: C

QUESTION 15

How many DS-32M2 switches can be mounted in a single EC-1200 cabinet?

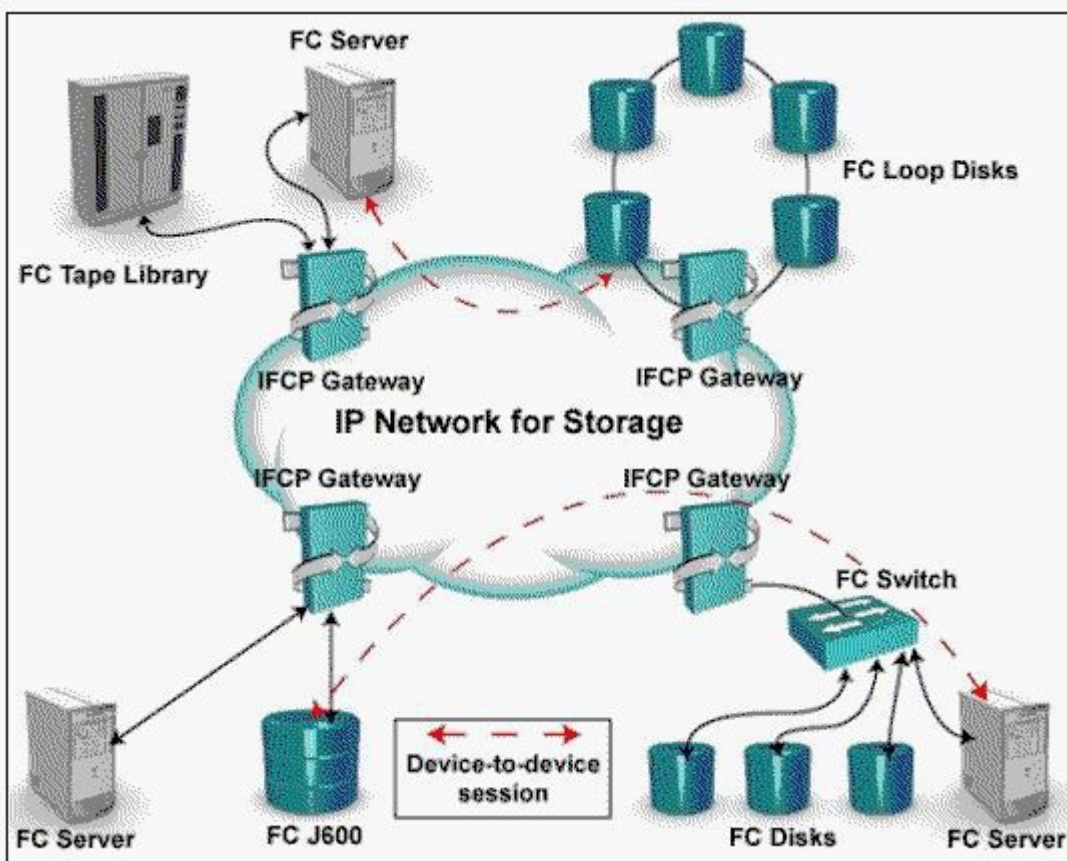
- A. 10
- B. 12
- C. 14
- D. 16

Correct Answer: B

QUESTION 16

Click the Exhibit button.

In this implementation, gateways are used to connect existing Fibre Channel devices to an IP network, and as such will include physical interfaces for which two [2] networks?



- A. IP
- B. ATM
- C. Sonet
- D. Fibre Channel

Correct Answer: AD

QUESTION 17

The PowerPath command, powermt, has reported a number of devices as dead. Which commands are used to remove the dead devices?

- A. powercf check; powermt restore; powermt config
- B. powermt check; powermt restore; powermt config
- C. powermt restore; powermt check; powermt config
- D. powercf restore; powermt restore; powermt config

Correct Answer: C

QUESTION 18

How many bits does a WWN contain?

- A. 16
- B. 24
- C. 32
- D. 64

Correct Answer: D

QUESTION 19

How many buffer-to-buffer (BB) credits can be allocated to a port on a Brocade DS16-B2 (Brocade 3x00) series switch?

- A. 27
- B. 54
- C. 64
- D. 108

Correct Answer: D

QUESTION 20

Which statement about the MDS 9000 32-port switch module is correct?

- A. Can support 16 ISLs
- B. Has a non-blocking architecture
- C. Shares 2Gb bandwidth among four ports
- D. Has more bandwidth than the 16 port module

Correct Answer: C

QUESTION 21

What is the difference between the native long-wave Fibre Channel distance that EMC supports vs. what Brocade supports?

- A. EMC: 10 km, Brocade: 35 km
- B. EMC: 20 km, Brocade: 10 km
- C. EMC: 35 km, Brocade: 15 km
- D. EMC: 35 km, Brocade: 80 km

Correct Answer: D

QUESTION 22

Which three (3) are valid types of persistent bindings?

- A. S_ID
- B. D_ID
- C. WWNN
- D. WWPN

Correct Answer: BCD

QUESTION 23

What does EMC VisualSAN 4.0 use to gather Brocade Switch information?

- A. SNMP

- B. Webtools
- C. SCSI INQ
- D. Navisphere CLI

Correct Answer: A

QUESTION 24

HBA has been replaced on a host in a customer environment. After rebooting the host, you notice that the host still sees all storage devices on all paths. Why?

- A. There is no LUN masking deployed on the storage array
- B. Zoning has been disabled on the switch or hardware/port zoning is in effect
- C. The WWPN of the host has not changed and hence there is no need for any changes to the SAN
- D. The old HBA has the same WWPN as the new one

Correct Answer: AB

QUESTION 25

Which option is used to prevent mirroring at the host level if the device is already mirrored at the storage level in a PowerPath Volume Manager 4.x environment?

- A. HW_MIRRORS_ON_REDUNDANT_SW_POLICY
- B. NO_MIRRORS_ON_REDUNDANT_HW_POLICY
- C. SW_MIRRORS_ON_REDUNDANT_HW_POLICY
- D. DISABLE_MIRRORS_ON_REDUNDANT_HW_POLICY

Correct Answer: C

QUESTION 26

Which view of Workload Analyzer will provide the aggregate utilization of all FA ports in the Symmetrix?

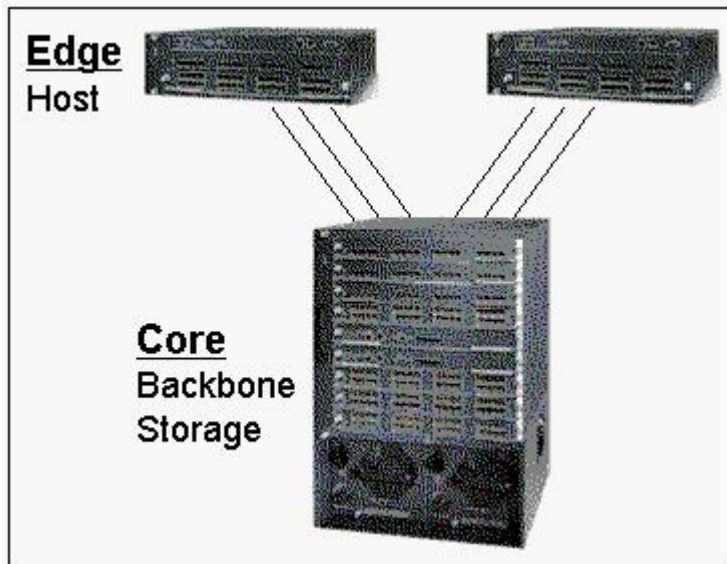
- A. Performance view
- B. Link utilization view
- C. Data collection view
- D. Performance traffic view

Correct Answer: A

QUESTION 27

Click the Exhibit button.

How many total ports are used for ISLs (not available for host or storage connections) in this core/edge example?



- A. 3
- B. 6
- C. 9
- D. 12

Correct Answer: D

QUESTION 28

How many switching modules (line cards) can be inserted into the MDS-9509 Director?

- A. 5
- B. 6
- C. 7
- D. 8

Correct Answer: C

QUESTION 29

Which EMC VisualSAN 4.0 component provides switch zoning capabilities?

- A. Zone Manager
- B. SAN Assistant
- C. Network Manager
- D. Configuration Manager

Correct Answer: C

QUESTION 30

Which two [2] components are required to use SAN Manager?

- A. NAS Agent
- B. FCC Agent
- C. SDM Agent
- D. SAN Manager license

Correct Answer: CD

QUESTION 31

Which CLI command is used for Device Masking?

- A. fzone
- B. symcfg
- C. symmask
- D. symconfig

Correct Answer: C

QUESTION 32

What are two [2] PowerPath modes of operation?

- A. active
- B. primary
- C. passive
- D. standby

Correct Answer: AD

QUESTION 33

How many ISLs are required to implement an extended distance IP solution in a MDS-9509 Director?

- A. 0
- B. 2
- C. 4
- D. 6

Correct Answer: A

QUESTION 34

You have added two McData DS-32M switches at a remote location without a service processor and DSM-Connect on the ControlCenter infrastructure server. You have been unable to discover the DS- 32M switches using SAN Manager. What action is needed?

- A. Enable the Embedded Web Server
- B. Upgrade firmware on the DS-32M switches
- C. Install DSM-Connect on the Service Processor
- D. Install DSM-Connect Software on a separate host

Correct Answer: D

QUESTION 35

What does the RCT_L frame field setting indicate?

- A. The arbitrated frame size
- B. Whether a primitive function has been requested
- C. The sequence number of the frame in an ordered set
- D. Whether the fame contains link control information or data

Correct Answer: D

QUESTION 36

A customer cannot discover his Brocade switches within ControlCenter. Which command must be run on the switch to resolve this?

- A. snmpshow
- B. configure
- C. agtcfgset

D. snmpmibcapset

Correct Answer: D

QUESTION 37

In a McDATA environment, which software allows for I/O threshold alerts to be configured?

- A. OnAlert
- B. ENS GUI
- C. FibreZone Bridge
- D. Connectrix Manager

Correct Answer: D

QUESTION 38

Which describes the non-blocking architecture deployed in M-series switches?

- A. Allows frames to be sent to destination ports based on the receiving ports availability
- B. Switch operations which move data across the bus into CMM and finally to MPC for delivery
- C. Memory based operations which fence partitions of memory into bit-buckets for data delivery
- D. Allows memory segmentation across the s/bar platform permitting data re-direction based on ASIC availability

Correct Answer: A

QUESTION 39

Which Brocade CLI command prints entries of the nameserver?

- A. nsDisp
- B. nsShow
- C. showNS
- D. showNameServer

Correct Answer: B

QUESTION 40

Where are available zones stored when using Connectrix Manager to add a zone to an existing fabric?

- A. Zone Library
- B. Zones in ZoneSet
- C. Hardware Fabric List
- D. Active Switch Memory

Correct Answer: A

QUESTION 41

In either a UNIX or Windows environment, which command is used for PowerPath monitoring and management?

- A. powermt
- B. powermon
- C. pp_select
- D. powerdisplay

Correct Answer: A

QUESTION 42

Which two [2] statements describe port binding?

- A. Supported on M-series switches
- B. Supported on MDS-series switches
- C. Allows one to specify which port will be allowed access to a specified target
- D. Allows one to specify which WWN will be allowed access on a specified port

Correct Answer: AD

QUESTION 43

When are zoning changes made in EMC VisualSAN 4.0 saved on a DS-16B2 switch?

- A. Immediately
- B. When they are refreshed
- C. When they are committed
- D. At next 30 minute information refresh

Correct Answer: C

QUESTION 44

Which settings are used for connecting a PC serial port to the M-Series products?

- A. 57600 bits per second, 8 Data bits, Even parity, 2 Stop bit, Xon/Xoff Flow Control
- B. 57600 bits per second, 7 Data bits, None for parity, 1 Stop bit, None for Flow Control
- C. 57600 bits per second, 8 Data bits, None for parity, 1 Stop bit, None for Flow Control
- D. 57600 bits per second, 7 Data bits, None for parity, 2 Stop bit, Hardware Flow Control

Correct Answer: C

QUESTION 45

Which is an EMC recommended best practice when doing fabric zoning?

- A. Single FA zoning
- B. Multiple FA zoning
- C. Single HBA zoning
- D. Multiple HBA zoning

Correct Answer: C

QUESTION 46

Which command is used to view the login history table of the Symmetrix?

- A. symmask list vcmdb
- B. symmask list hba -v
- C. symmask list logins
- D. symmask list database

Correct Answer:

QUESTION 47

Which command is used to notify PowerPath Volume Manager (PPVM) of a BCV device state change?

- A. symcfg discover
- B. symcfg rediscover
- C. powervadm discover
- D. powervadm rediscover

Correct Answer: D

To Read the [Whole Q&As](#), please purchase the [Complete Version](#) from [Our website](#).

Trying our product !

- ★ **100%** Guaranteed Success
- ★ **100%** Money Back Guarantee
- ★ **365 Days** Free Update
- ★ **Instant Download** After Purchase
- ★ **24x7** Customer Support
- ★ Average **99.9%** Success Rate
- ★ More than **69,000** Satisfied Customers Worldwide
- ★ Multi-Platform capabilities - **Windows, Mac, Android, iPhone, iPod, iPad, Kindle**

Need Help

Please provide as much detail as possible so we can best assist you.

To update a previously submitted ticket:



 One Year Free Update <p>Free update is available within One Year after your purchase. After One Year, you will get 50% discounts for updating. And we are proud to boast a 24/7 efficient Customer Support system via Email.</p>	 Money Back Guarantee <p>To ensure that you are spending on quality products, we provide 100% money back guarantee for 30 days from the date of purchase.</p>	 Security & Privacy <p>We respect customer privacy. We use McAfee's security service to provide you with utmost security for your personal information & peace of mind.</p>
---	---	--

[Guarantee & Policy](#) | [Privacy & Policy](#) | [Terms & Conditions](#)

Any charges made through this site will appear as Global Simulators Limited.

All trademarks are the property of their respective owners.

Copyright © 2004-2015, All Rights Reserved.