



E20-495^{Q&As}

Content Management xCelerated Composition Platform Application
Development Exam

Pass EMC E20-495 Exam with 100% Guarantee

Free Download Real Questions & Answers **PDF** and **VCE** file from:

<https://www.passapply.com/e20-495.html>

100% Passing Guarantee
100% Money Back Assurance

Following Questions and Answers are all new published by EMC
Official Exam Center

-  **Instant Download** After Purchase
-  **100% Money Back** Guarantee
-  **365 Days** Free Update
-  **800,000+** Satisfied Customers





QUESTION 1

For a given business process, specific data values must be displayed in a task list during process execution. Once the process completes, these values must be available for full- text searching.

How should the application developer store the data during process execution?

- A. in structured data types that are flagged to remain in the repository at the end of the process
- B. in a package that will persist in the repository after the process has completed
- C. in structured data types that are enabled for BAM reporting after the process has completed
- D. in structured data types and map them to package attributes at the end of the process

Correct Answer: D

QUESTION 2

What enables the inclusion of bar codes on printable forms in TaskSpace?

- A. Daeja ViewerOne Pro
- B. High Fidelity Forms
- C. Document Transformation Services
- D. Document Image Services

Correct Answer: B

QUESTION 3

Case workers access a TaskSpace Task List component in order to determine the most important tasks to work on each day. Workers will filter their task list by two required data fields:

Request_date: DATE

Income: FLOAT

A value in both fields is required in order to sufficiently minimize the number of cases shown in the case worker's task list.

How must request_date and income be defined to minimize the response time for the task list display?

- A. as simple process variables
- B. within separate structured data types
- C. within the same structured data type

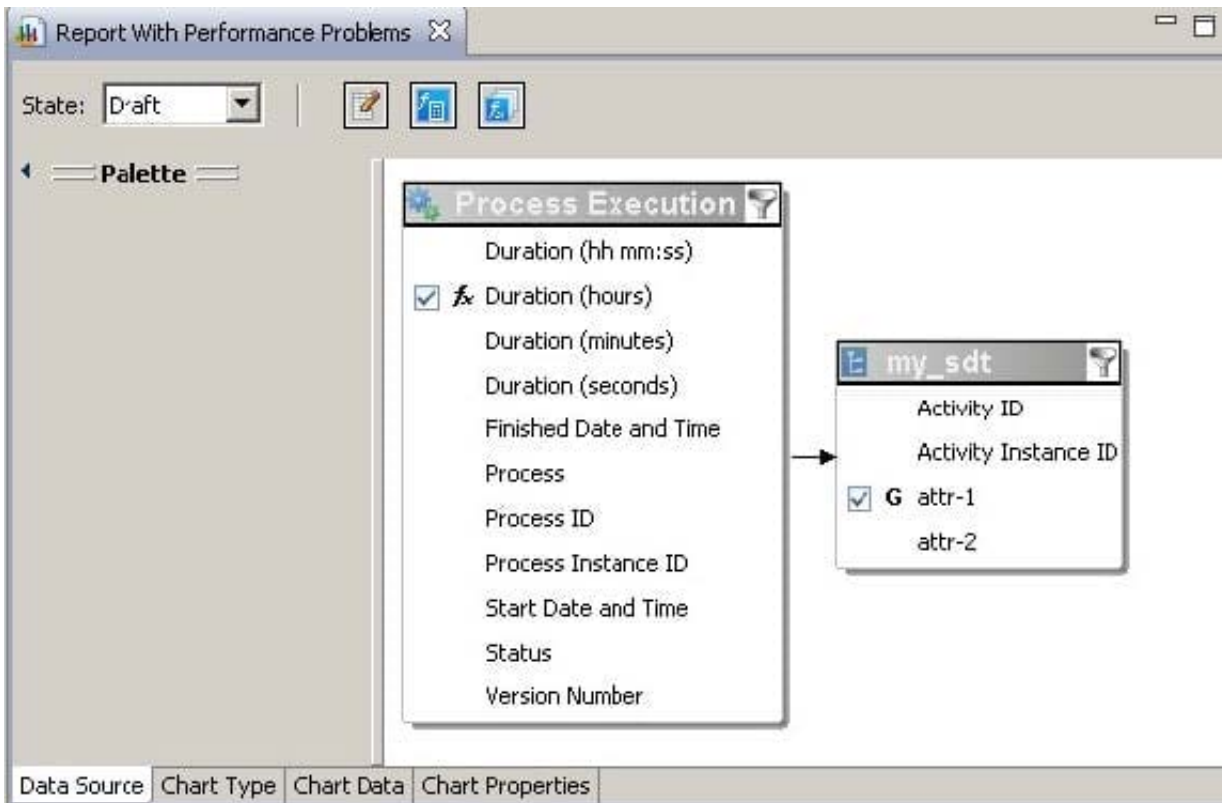


D. as attributes within package data

Correct Answer: C

QUESTION 4

Refer to the exhibit.



The report definition shown in the exhibit is for a bar chart that displays the average Duration of Process Execution for a specific process, aggregated by attr1 of my_sdt.

The report has not been tuned for performance. What can an application developer do to improve performance of this report?

- A. Remove the filter from the Process Execution entity and re-publish the report.
- B. Remove the filter from the my_sdt entity and re-publish the report.
- C. Create an index on the Duration column of the table that represents the Process Execution entity in the BAM database.
- D. Create an index on the attr1 column of the table that represents the my_sdt entity in the BAM database.

Correct Answer: D

QUESTION 5



Several departments have processes that submit documents to an external agency using the same web service.

According to EMC best practices, which design approach should an application developer use to allow simple creation of BAM reports on the number of web service submissions made?

- A. Generate a common workflow method that is called by each of the departmental processes.
- B. Configure Dynamic Web Service activities in each departmental process that update a process variable with the same name.
- C. Include a DQL Write activity in the departmental processes that updates a counter record.
- D. Create a sub process that invokes the web service.

Correct Answer: D

QUESTION 6

Which TaskSpace component must be modified to display two additional columns for a particular folder type?

- A. Folder Display
- B. Folder View
- C. Folder Information
- D. Folder Contents

Correct Answer: D

QUESTION 7

According to EMC best practices, how should BAM reports that return thousands of records be designed to improve reporting performance?

- A. Use table charts only.
- B. Avoid using activity entities.
- C. Limit drill-downs to one level.
- D. Include no more than 5 report entities.

Correct Answer: D

QUESTION 8

An organization requires documents to be reviewed a variable number of times, which will be determined at runtime. To satisfy this requirement, the application developer has created a process template containing a simple loop.

According to EMC best practices, how should the loop iterations be managed?



- A. with a decrementing counter in a Process Data Mapping activity
- B. with conditional branching specified in a Decision Split activity
- C. with a Join activity that aggregates multiple flows
- D. with an automated method call that tracks the number of approvals

Correct Answer: A

QUESTION 9

An activity in a parent process template invokes a child process.

How are the parent and child process instances executed?

- A. The parent activity waits for the child process instance to complete.
- B. The parent activity continues execution once the child process instance starts.
- C. The child process instance is started once the parent process instance completes.
- D. The child process instance is started once the parent process activity completes.

Correct Answer: D

QUESTION 10

An application developer needs to deploy a TaskSpace application named InsuranceClaims to another repository for testing.

According to EMC best practices, what should the Composer project be named?

- A. insuranceclaims
- B. InsuranceClaims.Test
- C. InsuranceClaims
- D. tst_InsuranceClaims

Correct Answer: C

QUESTION 11

A process dashboard contains four dashlets called A, B, C, and D. Managers should be allowed to view all four dashlets, but task processors should only be allowed to view dashlets A and C.

How can a dashboard designer satisfy this requirement?

- A. Set the permissions on each dashlet to grant access to the appropriate users.



- B. Add a new dashlet to the dashboard and configure dashlets A and C as drill-down targets of this new dashlet.
- C. Configure a mandatory filter for the dashboard that displays dashlet information based on user profile.
- D. Create a second dashboard that contains only dashlets A and C and provide appropriate role-based access to each dashboard.

Correct Answer: D

QUESTION 12

Which column must be included in a folder content template to support collaboration features?

- A. Collaboration
- B. Discussion
- C. Thread
- D. Topic Status

Correct Answer: D

QUESTION 13

An application developer needs to re-use an activity in which input parameters differ across processes. How should the application developer accomplish this?

- A. by using an existing activity, then adding process parameters in the process properties Data tab
- B. by creating a new structured data type, then adding the input parameters to any activities in the process
- C. by creating a custom activity template, then defining the input parameters under the Properties tab
- D. by creating a custom activity template, then defining the input parameters under the Definition tab

Correct Answer: D

QUESTION 14

The BAM server step size setting affects which server function?

- A. Event Pipe job
- B. Gap Filler
- C. Aggregation Engine
- D. Purge jobs

Correct Answer: A



QUESTION 15

Which third-party product available from EMC is commonly deployed with TaskSpace to provide document viewing, redaction, and redlining?

- A. Workshare DeltaView
- B. Informative Graphics Brava!
- C. Adobe Acrobat Reader
- D. Documentum Image Services

Correct Answer: B

[E20-495 VCE Dumps](#)

[E20-495 Practice Test](#)

[E20-495 Study Guide](#)