



# E20-329<sup>Q&As</sup>

Technology Architect Backup and Recovery Solutions Design Exam

## Pass EMC E20-329 Exam with 100% Guarantee

Free Download Real Questions & Answers **PDF** and **VCE** file from:

<https://www.passapply.com/e20-329.html>

100% Passing Guarantee  
100% Money Back Assurance

Following Questions and Answers are all new published by EMC  
Official Exam Center

-  **Instant Download** After Purchase
-  **100% Money Back** Guarantee
-  **365 Days** Free Update
-  **800,000+** Satisfied Customers





### QUESTION 1

You have been asked to redesign an EMC NetWorker environment using Data Domain with DD Boost.

When considering the memory requirements for the Data Domain devices, the DD Boost client has 4 GB of RAM using one stream.

What is the minimum memory requirement for each single stream?

- A. 6 MB
- B. 12 MB
- C. 18 MB
- D. 24 MB

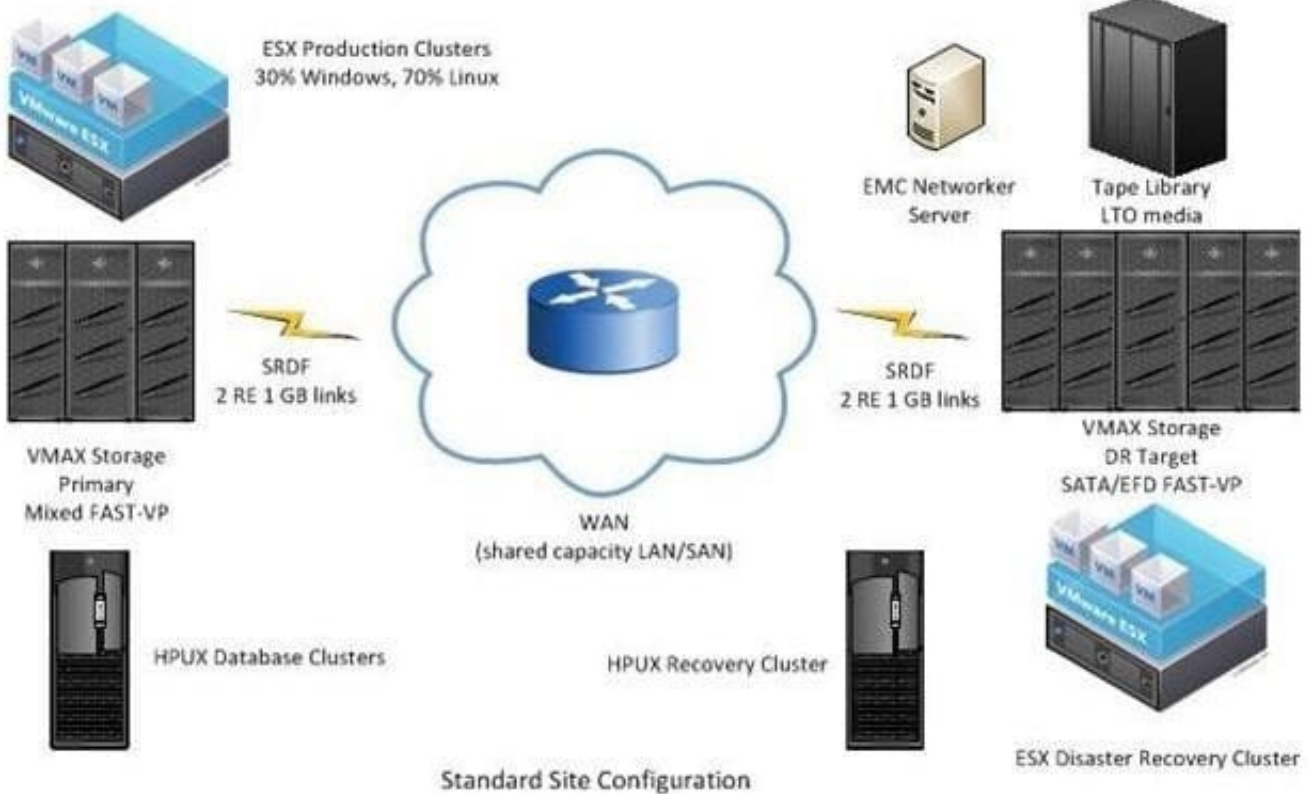
Correct Answer: D

### QUESTION 2

Refer to Scenario .

#### Production Site Configuration

#### Common DR Site Configuration



The Chief Technical Officer (CTO) of a large company has directed their IT management staff to examine corporate



wide operations and find ways to limit the cost of operations. The corporate directives have prompted adoption of company policies that include the use of virtualization for all new servers and as many services as possible. The company is subject to government regulations concerning data retention policies for confidential data. Data has to be retained for seven years.

An audit of the backup and recovery environment is performed. The exhibit shows a typical site and how it is connected to the disaster recovery environment. Data in the primary site is configured on VMAX storage using FAST-VP to support multiple work load types on a single storage array.

Data is protected by SRDF/A to a remote VMAX which acts as a target for multiple sites. The remote copy of the data is snapped and copied to tape. Retention is accomplished to governmental standards by offsite storage of tape in a remote protected facility.

The company has noted that it has the following requirements in any proposed architecture for the backup and recovery environment:

1.  
Reduced power consumption
2.  
Reduced floor space consumption
3.  
Reduced storage capacity consumption
4.  
Lower WAN bandwidth utilization
5.  
Shorten RPO
6.  
Decrease RTO
7.  
Increase security
8.  
Lower Total Cost of Ownership (TCO)

To satisfy the stated requirements, the customer wants to use a virtual appliance to limit power and space consumption in their smaller locations. To replace the current SRDF/A replication model, which EMC technology should be recommended?

- A. Data Domain
- B. NetWorker NDMP
- C. Avamar AVE



D. NetWorker Archiver

Correct Answer: A

---

### QUESTION 3

A customer has data at several remote offices that needs to be backed up over a secure WAN connection to their data center. However, bandwidth is constrained. A major portion of their backup data will be file system data. In addition, they have a 6 TB database in the primary data center with a 6% change rate that needs to be backed up.

Which EMC backup solution is recommended for this customer?

- A. NetWorker with Avamar integration
- B. NetWorker with Data Domain and CIFS
- C. NetWorker with Data Domain and DD Boost
- D. Avamar server with Avamar Virtual Edition

Correct Answer: A

---

### QUESTION 4

Scenario

A customer is looking to perform a data center refresh. They want to standardize their backup infrastructure by using EMC NetWorker, Avamar, and Data Domain in an integrated environment. The environment consists of:

A primary data center - NetWorker server, Data Domain, and Avamar A disaster recovery (DR) data center

-Data Domain only 220 remote sites Each remote site consists of approximately 30 clients and 1 storage node speed at and between all sites is 1 Gb

The company's Chief Technology Officer (CTO) has indicated that data must be backed up locally. Then, the data must be copied offsite to the primary data center and DR data center. The entire solution must be managed from a single unified interface in order to configure and track backup jobs. The company is subject to government regulations concerning data retention policies for confidential data. Data has to be retained for seven years on tape at the DR data center.

Which application interface is used as the unified interface to configure and track backup jobs?

- A. NetWorker Management Console
- B. Data Domain Enterprise Manager
- C. Avamar Enterprise Manager
- D. Data Protection Advisor

Correct Answer: A

---



### QUESTION 5

A Symantec NetBackup customer is planning to add a second data center. They would like to leverage deduplication technology to improve backup operations and disaster recovery with a minimum amount of change to their existing backup environment. The customer's primary design goals are:

1.

Improve backup performance

2.

Electronic vaulting for disaster recovery

3.

Maintain NetBackup as their primary tool for backup control and visibility

What should be included with a high-end Data Domain appliance?

A. NetBackup OST

B. 8 GB Fibre Channel

C. iSCSI over 10 GB Ethernet

D. CIFS protocol over 10 GB Ethernet

Correct Answer: B

---

### QUESTION 6

A data center company is using two EMC NetWorker servers (NetWorker\_A and NetWorker\_B). Each server has three storage nodes to protect 650 server applications and data. The total amount of data being backed up is 100 TB. NetWorker\_A server protects 60 TB and NetWorker\_B server protects 40 TB.

To minimize cost and ease licensing management for NetWorker, the company decided to switch from a traditional licensing model to a capacity licensing model.

How many licenses are needed to support the company's requirements?

A. 2 Source Capacity Datazone Enabler and Source Capacity 10 TB tier 4 licenses

B. 2 Source Capacity Datazone Enabler and Source Capacity 10 TB tier 3 licenses

C. 2 Base license and 10 Source Capacity TB tier 3 licenses

D. 2 Source Capacity Datazone Enabler and 650 Standard Client Connection licenses

Correct Answer: D

---



#### QUESTION 7

The EMC account team has been asked to design a new EMC NetWorker backup solution for Microsoft Exchange Server 2007. The customer's environment consists of Microsoft Exchange Server 2007 hosted on an EMC CLARiiON disk array with EMC VSS Provider and an EMC Disk Library.

Your design needs to include a server-less backup solution for the Microsoft Exchange Server 2007 environment by leveraging the Microsoft VSS framework.

What is a recommended approach to meet the customer's requirements?

- A. NetWorker Module for Microsoft Applications
- B. NetWorker PowerSnap Module
- C. NetWorker Module for Microsoft Exchange Server
- D. NetWorker VSS Client for Microsoft Windows

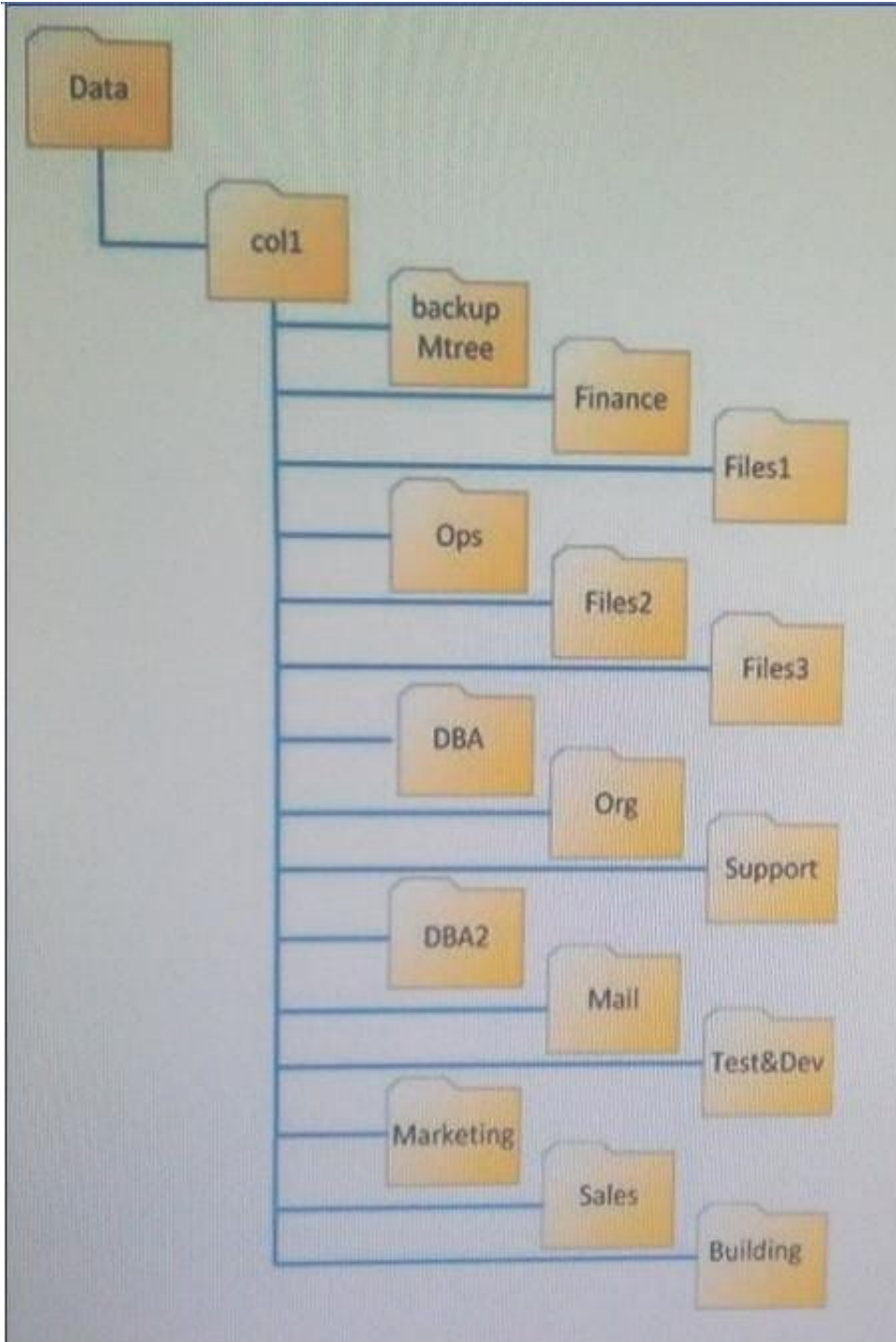
Correct Answer: A

---

#### QUESTION 8

As shown in the exhibit, a customer has configured EMC Data Domain for management. They have noticed performance issues when using the configuration.

How many Mtrees should be removed to improve the performance?



- A. 1
- B. 2
- C. 3
- D. 4

Correct Answer: A





### QUESTION 9

A customer wants to determine how much data can be transmitted in their network. The network environment includes the following:

LAN speed = 4 Gb Bandwidth = 50 Mbps RTT = 50 ms

What is the customer's bandwidth delay product (BDP)?

- A. 2000 bytes
- B. 76 Kb
- C. 305 Kb
- D. 5 MB

Correct Answer: C

---

### QUESTION 10

An existing customer has an EMC Data Domain system that is the same model as that used in the Data Domain Archiver. The customer has decided to retain a portion of their backups for five years. They would like to upgrade their Data Domain system to an Archiver. Because the customer manages their existing Data Domain system, they would like to perform the installation themselves. How would you advise the customer?

- A. An upgrade to a Data Domain Archiver is not supported in the field
- B. A license must be purchased to expand the active tier above 146 TB
- C. Customer can convert a regular file system to an archive system
- D. An archive limitation of three years for all archive unit exists

Correct Answer: B

---

### QUESTION 11

A customer is interested in using a Remote Copy policy to replicate data between two single-engine EMC Disk Library (EDL) systems. The customer is concerned about the readiness of replicated tapes in case of a failure on the source system.

What can be done to minimize the exposure on the target?

- A. Use small virtual tapes
- B. Implement a TCP network accelerator
- C. Use jumbo frames
- D. Increase the number of EDL ports connected to the IP network

Correct Answer: A

---





#### QUESTION 12

You are reviewing potential backup opportunities in a customer environment that is currently using Backup Exec.

Which assessment tool will help to provide information about their current backup and restore success rates?

- A. Quick Scripts
- B. GAP Analysis
- C. FSA
- D. EBSS

Correct Answer: A

---

#### QUESTION 13

A customer has 6,000 desktops and laptops with 1 TB of data, an average backup time of 10 minutes each, and 10 TB of database data. The customer wants a solution that addresses the following requirements:

Deduplication in the shortest backup window with the fewest components  
Least performance impact on the database servers

Which Avamar solution is recommended?

- A. Two Avamar 2.0 TB 5-node servers integrated with a Data Domain system
- B. NetWorker with multiple deduplication nodes
- C. One Avamar 7.8 TB 3-node server integrated with a Data Domain system
- D. NetWorker with integrated deduplication nodes and a Data Domain system

Correct Answer: A

---

#### QUESTION 14

In an EMC NetWorker environment, a firewall is configured to allow communication over ports 9000 and 9001 from the DMZ. The NetWorker Management Console can be accessed from the DMZ but database queries cannot be performed.

Which port needs to be opened on the firewall?

- A. 111
- B. 2638
- C. 7937
- D. 7938



Correct Answer: B

---

#### QUESTION 15

A new EMC Avamar customer is concerned with data security since all backup data is stored on disk. To minimize the customer's concerns, you have recommended the encryption-at-rest feature.

What is a consideration when using this feature?

- A. Must be enabled at Avamar server installation time and has an impact on server resources
- B. Specified at the time of each backup operation or in a group definition
- C. Must be enabled when each client is installed and cannot be changed
- D. Uses an Avamar proprietary encryption method which requires an encryption key

Correct Answer: A

[Latest E20-329 Dumps](#)

[E20-329 PDF Dumps](#)

[E20-329 Practice Test](#)