



COG-632^{Q&As}

IBM Cognos 10 BI Metadata Model Developer

Pass IBM COG-632 Exam with 100% Guarantee

Free Download Real Questions & Answers **PDF** and **VCE** file from:

<https://www.passapply.com/COG-632.html>

100% Passing Guarantee
100% Money Back Assurance

Following Questions and Answers are all new published by IBM Official Exam Center

-  **Instant Download** After Purchase
-  **100% Money Back** Guarantee
-  **365 Days** Free Update
-  **800,000+** Satisfied Customers





QUESTION 1

Which of the following join types does the generated SQL below illustrate?

```
select
    Manager.Manager as Manager,
    Product.Product as Product
from
    datasource_name.database_name.schema.Manager
    Manager
    datasource_name.database_name.schema.Product
    Product
```

- A. Inner join
- B. Disjointed join
- C. Outer join
- D. Cross join

Correct Answer: D

QUESTION 2

A user-defined function imported into Framework Manager can be viewed and used in the following locations?

- A. Viewed in the Explorer and used in the expression editor.
- B. Viewed in the Project Viewer and used in the expression editor.
- C. Viewed in the Explorer and used in the SQL of a model query subject.
- D. Viewed in the Diagram and used in the SQL of a data source query subject.

Correct Answer: A

QUESTION 3

Which of the following are proven practices for organizing the objects in a project?

- A. When importing metadata from more than one data source, include all imported objects in the root namespace.
- B. When importing metadata from more than one data source, create a separate folder for the imported objects from each data source.



- C. When importing metadata from more than one data source, create a separate namespace for the imported objects from each data source.
- D. When importing metadata from more than one data source, do not override the relationships defined between the data sources at the time of import.

Correct Answer: C

QUESTION 4

To ensure a query subject is recognized as a fact by the Cognos 10 query engine in all query scenarios, the query subject requires which cardinality rule?

- A. One instance of attached cardinality must be 1..1.
- B. One instance of attached cardinality must be 1..n.
- C. All instances of attached cardinality must be either 1..n or 0..n.
- D. All instances of attached cardinality must be either 1..1 or 0..n.

Correct Answer: C

QUESTION 5

In Framework Manager, which of the following will have a negative impact on query performance?

- A. Enable the Allow Enhanced Model Portability governor.
- B. Set the Cross-product joins and Outer Joins governors to Deny.
- C. Add filters and calculations to model query subjects rather than data source query subjects.
- D. Ensure that, where required, queries are executed against materialized views which contain only aggregated data rather than base tables that contain all the data.

Correct Answer: A

QUESTION 6

When a modeler imports metadata into Framework Manager, the Usage property for a non-indexed, numeric query item is set to which of the following?

- A. Fact
- B. Attribute
- C. Identifier



D. Measure Dimension

Correct Answer: A

QUESTION 7

The database table below would typically be found in what data structure?

Product line code	Product line	Product type code	Product type	Product number	Product
1	A	4	Packs	29	Canyon Mule Carryal
1	A	5	Lanterns	30	Firefly Lite
1	A	5	Lanterns	31	Firefly Mapreader
1	A	5	Lanterns	32	Firefly 2
1	A	5	Lanterns	34	Firefly Extreme
1	A	1	Cooking Gear	3	TrailChef Kitchen Kit
1	A	1	Cooking Gear	4	TrailChef Cup
1	A	1	Cooking Gear	5	TrailChef Cook Set
1	A	1	Cooking Gear	7	TrailChef Single Flame
1	A	2	Tents	14	Star Gazer 3
1	A	3	Sleeping Bags	22	Hibernator Pillow
1	A	4	Packs	28	Canyon Mule Cooler
1	A	5	Lanterns	33	Firefly 4
1	A	5	Lanterns	40	EverGlow Lamp
1	A	1	Cooking Gear	10	TrailChef Utensils
1	A	2	Tents	11	Star Lite
1	A	2	Tents	12	Star Dome
1	A	3	Sleeping Bags	19	Hibernator Extreme
1	A	3	Sleeping Bags	20	Hibernator Self - Inflating Mat
1	A	1	Cooking Gear	6	TrailChef Deluxe Cook Set

- A. Cartesan
- B. Normalized
- C. Operational
- D. Star schema

Correct Answer: D

QUESTION 8

What must a modeler consider when modeling for drill-through between multiple data sources?

- A. Drill-through values must be cast.
- B. Drill-through values must be conformed.
- C. Drill-through values must be consolidated.
- D. Drill-through values must be identifiers.

Correct Answer: B



QUESTION 9

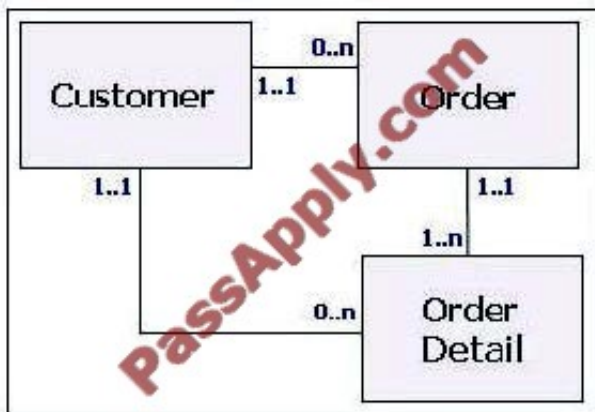
Which of the following is true of an OLAP data structure?

- A. Comprised of normalized dimension and fact structures.
- B. Organizes dimension tables into hierarchies and levels.
- C. Allows "real time" analysis against disparate data sources.
- D. Cardinality must be defined.

Correct Answer: B

QUESTION 10

In a transitive relationship scenario, what problems exist when reporting from the tables below?



- A. The Order table must be included in each query.
- B. The Order Detail table has conflicting cardinalities.
- C. The priority path must be defined.
- D. There is more than one possible path between the tables.

Correct Answer: D

QUESTION 11

In Framework Manager, which of the following statements is correct when working with a multi-lingual project?



- A. The design language can be changed at any point.
- B. A project language cannot be deleted once defined in Framework Manager.
- C. A language must be added to the project before it can be published with a package.
- D. When a new language is added to a project, all locales for that language are added as well.

Correct Answer: C

QUESTION 12

With respect to Cognos 10 security, which of the following is true of the Cognos namespace?

- A. Only contains predefined groups and roles.
- B. Can be used to create custom groups, roles and users.
- C. Can be used to create Cognos 10 specific groups and roles.
- D. Can be deleted if a different namespace is used to secure the environment.

Correct Answer: C

[COG-632 PDF Dumps](#)

[COG-632 Practice Test](#)

[COG-632 Study Guide](#)



To Read the [Whole Q&As](#), please purchase the [Complete Version](#) from [Our website](#).

Try our product !

100% Guaranteed Success
100% Money Back Guarantee
365 Days Free Update
Instant Download After Purchase
24x7 Customer Support
Average 99.9% Success Rate
More than 800,000 Satisfied Customers Worldwide
Multi-Platform capabilities - [Windows](#), [Mac](#), [Android](#), [iPhone](#), [iPod](#), [iPad](#), [Kindle](#)

We provide exam PDF and VCE of Cisco, Microsoft, IBM, CompTIA, Oracle and other IT Certifications. You can view Vendor list of All Certification Exams offered:

<https://www.passapply.com/allproducts>

Need Help

Please provide as much detail as possible so we can best assist you.
To update a previously submitted ticket:



 <p>One Year Free Update Free update is available within One Year after your purchase. After One Year, you will get 50% discounts for updating. And we are proud to boast a 24/7 efficient Customer Support system via Email.</p>	 <p>Money Back Guarantee To ensure that you are spending on quality products, we provide 100% money back guarantee for 30 days from the date of purchase.</p>	 <p>Security & Privacy We respect customer privacy. We use McAfee's security service to provide you with utmost security for your personal information & peace of mind.</p>
---	---	--

Any charges made through this site will appear as Global Simulators Limited.
All trademarks are the property of their respective owners.
Copyright © passapply, All Rights Reserved.