



C4040-129^{Q&As}

IBM i 7.1 Administration

Pass IBM C4040-129 Exam with 100% Guarantee

Free Download Real Questions & Answers **PDF** and **VCE** file from:

<https://www.passapply.com/c4040-129.html>

100% Passing Guarantee
100% Money Back Assurance

Following Questions and Answers are all new published by IBM Official Exam Center

-  **Instant Download** After Purchase
-  **100% Money Back** Guarantee
-  **365 Days** Free Update
-  **800,000+** Satisfied Customers





QUESTION 1

What is saved with the SAVSYSINF command?

- A. All security data, PTF status, and configuration objects
- B. A subset of the SAVSYS command including PTFs applied since the last SAVSYS
- C. Network attributes, IP configuration, hosts table, routes, and line descriptions
- D. System values, network attributes, IPL attributes, job schedule entries, and cleanup settings

Correct Answer: B

QUESTION 2

A customer has been experiencing network issues. When their network switch resets, the Ethernet line on IBM i fails. What is the correct setting for the line description so that it will continuously retry until the network switch recovers?

- A. RESTART(*YES)
- B. CMNRCYLMT(1 0)
- C. VRYWAIT(*NOWAIT)
- D. THRESHOLD(*NOMAX)

Correct Answer: B

QUESTION 3

Which command will save the access paths for two physical files (PFLE1, PFLE2) when both the physical and dependent logical file (LFILE) reside in the same library?

- A. SAV OBJ(LFILE) PATH(*YES)
- B. SAVOBJ OBJ(LFILE) ACCPTH(*YES)
- C. SAVOBJ OBJ(PFILE1 PFILE2) ACCPTH(*YES)
- D. SAVACCPATH FILE(PFILE1 PFILE2) ACCPATH(*YES)

Correct Answer: C

QUESTION 4

A customer determines that run time of a weekly reporting job has begun to increase rapidly over the past several months. Examination of the file shows only normal size growth of less than 1%.



The entire file is read sequentially by key and is heavily I/O blocked for performance.

What should the administrator do to reduce run-time for the reporting job?

- A. Override the file to SEQONLY(*YES).
- B. Reorganize the file to remove deleted records.
- C. Reorganize the file in the sequence of the key field.
- D. Increase the job's time slice and enable expert cache in the memory pool in which the job runs.

Correct Answer: C

QUESTION 5

An administrator needs to analyze performance data that has been collected. The Performance Tools temporary key has expired. How can the system administrator analyze the performance data?

- A. Adjust the QDATE system value to the day before the temporary key expired. Then rerun the performance analysis.
- B. On another system with a valid Performance Tools key, enter the command STPPERDDM to use DDM to remotely connect to the system to be evaluated.
- C. Start performance collection using System i Navigator, save the collection library and restore it to another system with a valid Performance Tools key.
- D. Start performance collection using the PM400 tab in System i Navigator and click 'yes' when prompted to send the data to IBM. Then review IBM's analysis online.

Correct Answer: C

QUESTION 6

An administrator needs to have a selected group of users run their batch jobs at priority 40, instead of the default of 50, in the QBATCH subsystem. In what work management object can the default run priority be specified for a group of jobs?

- A. Class
- B. Pouting Entry
- C. Job Description
- D. Subsystem Description

Correct Answer: A

QUESTION 7

In addition to the objects in the /home directory, what additional objects are saved when SAV OBJ (/home/



*INCLUDE)) is used?

- A. Sub-directoriesObjects in the sub-directories
- B. Sub-directoriesOmitting objects in the sub-directories
- C. Security assignmentsOmitting sub-directories and their objects
- D. Sub-directoriesObjects in the sub-directoriesSecurity assignments

Correct Answer: A

QUESTION 8

A customer with in-house developed applications has many custom commands in library APPLIB that relate to the application programs. As part of a system audit, the administrator needs to run a report to determine which user profiles have authority to run the commands. Given the application library APPLIB, which report from the Security Tools menu should the administrator use to complete this task?

- A. Option 21 - Adopting Objects
- B. Option 40 - Program Authority
- C. Option 49- User Profile Authority
- D. Option 25- Command Private Authority

Correct Answer: D

QUESTION 9

During a full system restore the sign on screen is displayed before the restore completes. Which system value is the most likely cause?

- A. Restore Abend action (QRSTABD) is set to *SIGNON.
- B. Allow Object Restore (QALWOBJRST) is NOT set to *All.
- C. Verify Object Restore (QVFYOBJRST) is set to 3 or higher.
- D. Job message queue full action (QJOBMSGQFL) is set to *NOWRAP.

Correct Answer: D

QUESTION 10

Which tool can be used to report and take various actions on all user profiles with passwords that match the profile name?

- A. ANZDFTPWD

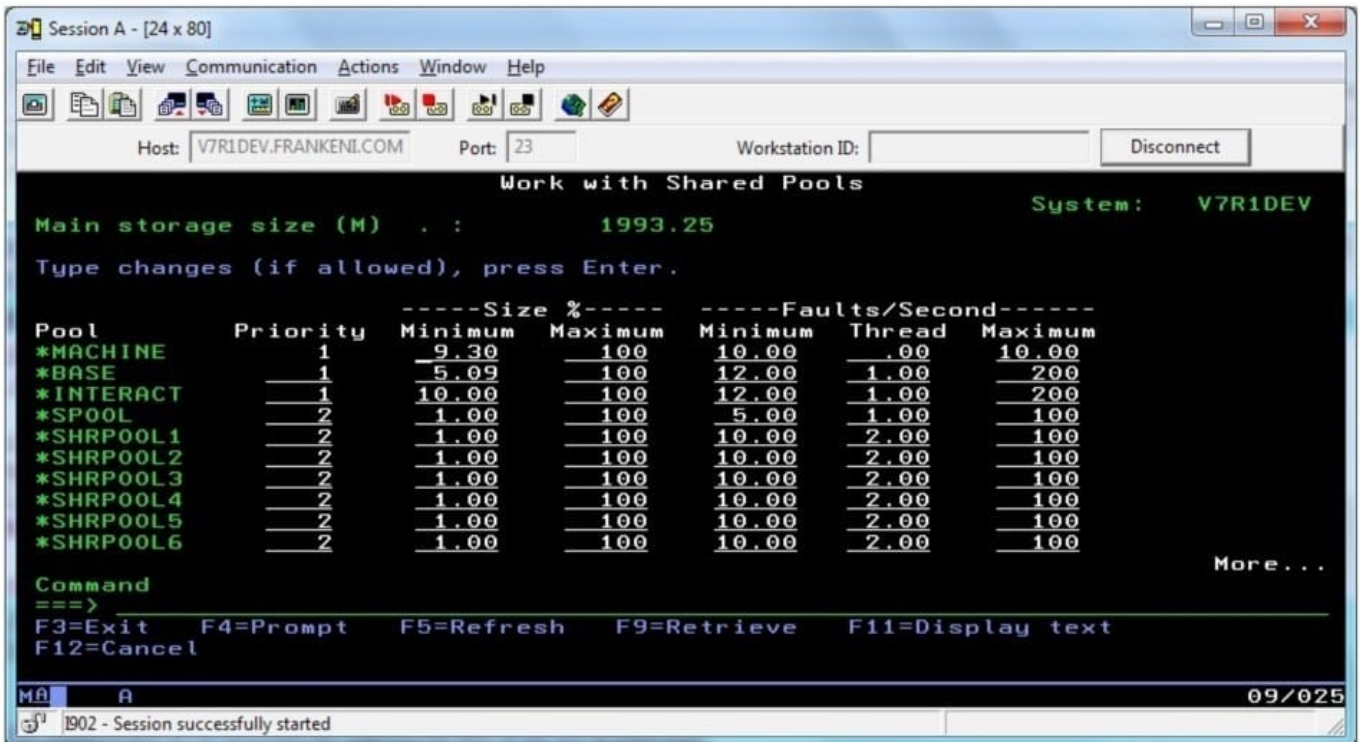


- B. ANZUSRPWD
- C. ANZUSRATR
- D. ANZPRFATR

Correct Answer: A

QUESTION 11

In the Work With Shared Pools panel shown, what is the meaning of the "Maximum" column under the "Size" section?



- A. The maximum amount of main storage that can be assigned to the pool in GB.
- B. The maximum percentage of the total main storage that can be assigned to the pool.
- C. The maximum amount of main storage that the automatic tuner will assign to the pool in GB.
- D. The maximum percentage of the total main storage that the automatic tuner will assign to the pool

Correct Answer: D

QUESTION 12

What is the meaning of the highest schedule priority (PTYLMT) parameter, when set to 0 on the CHGJOB JOBPTY(0) command?

- A. A job is moved to the very top of the job queue



- B. A system job is moved to the very top of the processor queue
- C. A batch job is put in *HLD status while it is on a job queue
- D. The job's spooled files are moved to the very top of the output queue

Correct Answer: A

QUESTION 13

An administrator needs to access the HMC remotely from a browser on a desktop. When user ID "hscroot" is used, the authentication is successful. However, when user ID "admin" is used, the authentication fails, even though the ID has hmc super user as the Task Role. The user "admin" can sign on locally at the HMC.

What is the likely cause of the problem?

- A. The web access password for "admin" is expired.
- B. Only user "hscroot" has authority to the ETH1 device.
- C. The user "admin" is not a member of the "webadmin" group.
- D. Allow Remote Access via the Web has not been checked for the user id "admin."

Correct Answer: D

QUESTION 14

A batch job is running a report at priori 50 on a system using IBM defaults for job run priorities. The report results are needed as soon as possible without disrupting interactive users.

Which run priority value will support the requirement?

- A. 10
- B. 20
- C. 40
- D. 60

Correct Answer: C

QUESTION 15

Due to an application problem, management has requested the IPL of a partition running IBM i 7.1. The administrator initiates the IPL, and during the restart phase notices the IPL is running in manual mode even though the HMC partition settings indicate B NORMAL.

Why is the IPL running in manual mode?



- A. The PWRDWNSYS command restart parameter is set to *MANUAL.
- B. Manual is the default IPL mode when there is a console problem.
- C. The QIPLTYPE system value is set to "Attended IPL, Console in debug mode".
- D. Manual is the default IPL mode when the previous system end indicator is abnormal.

Correct Answer: C

[C4040-129 PDF Dumps](#)

[C4040-129 VCE Dumps](#)

[C4040-129 Study Guide](#)