



C4040-109^{Q&As}

Virtualization Technical Support for AIX and Linux - v2

Pass IBM C4040-109 Exam with 100% Guarantee

Free Download Real Questions & Answers **PDF** and **VCE** file from:

<https://www.passapply.com/C4040-109.html>

100% Passing Guarantee
100% Money Back Assurance

Following Questions and Answers are all new published by IBM Official Exam Center

- ⚙ **Instant Download** After Purchase
- ⚙ **100% Money Back** Guarantee
- ⚙ **365 Days** Free Update
- ⚙ **800,000+** Satisfied Customers





QUESTION 1

An administrator is attempting to configure a new deployment of 56 POWER7 Blades across 4 IBM BladeCenter H chassis. Each blade will be installed with an IVM and 2 LPARs. IVM is installed and the administrator checks that both LHEA ports are reporting a Link State of "Up." 2 LPARs are created and the network traffic balanced by allocating one LHEA port to the first LPAR, the second port to the other. After successfully installing the first LPAR via NIM, the administrator finds the second LPAR fails to netboot. What should the administrator verify on the BladeCenter Chassis?

- A. That 4 power supplies (PSU) have been installed.
- B. That both the external LHEA ports have been cabled.
- C. That a secondary I/O module has been installed and cabled.
- D. That the Multi-Core Scaling (MCS) attribute is correctly set on both LHEA ports.

Correct Answer: C

QUESTION 2

An administrator has a Power 720 with 64GB of memory and Active Memory Expansion (AME).

An LPAR has only 10GB of memory available and an application has been sized at 15GB of memory. The administrator runs amepat to determine an efficient expansion factor. Based on the output, an expansion factor of 1.6 has been chosen.

How should this be configured in the LPAR?

- A. Enter 16GB as '\desired\ ', enter 1.6 in the Active memory expansion factor field.
- B. Enter 10GB as '\desired\ ', enter 1.6 in the Active memory expansion factor field.
- C. Enter 10GB as '\desired\ ' and modify/etc/ame.conf with AME_RATIO=1.6.
- D. Enter 16GB as '\desired\ ' and modify/etc/ame.conf with AME_RATIO=1.6.

Correct Answer: B

QUESTION 3

A new VIO Server environment has been created to support several VIO Clients. Disks have been assigned to both VIO Servers. Which of the following will ensure that disks can be mapped from both VIO Servers?

- A. chdev -dev sys0 -attr respol=disabled
- B. chdev -dev hdiskX -attr reserve_policy=no_reserve
- C. chdev -dev hdiskX -attr reservation=no
- D. chdev -dev sys0 -attr map=yes



Correct Answer: B

QUESTION 4

A new system is being implemented with NPIV storage. The administrator checks disk availability and notices that there are more disks than expected, and that some are already in use. What is the cause of this?

- A. SAN single initiator zoning was configured.
- B. NPIV zoning is disabled.
- C. SAN multi-initiator zoning was configured.
- D. NPIV zone mapping has duplicate WWPNs.

Correct Answer: C

QUESTION 5

An administrator would like to install a new Fix Pack on an existing VIO server. The Fix Pack has been mounted using NFS on /mnt. Which command should the administrator use to achieve this?

- A. `installios -update_all -dev /mnt`
- B. `iosinst -update -install -accept -dev /mnt`
- C. `updateios -dev /mnt -accept -install`
- D. `geninstall -u -ac -d /mnt -f all`

Correct Answer: C

QUESTION 6

An administrator is attempting to apply a Fix Pack to an VIO server which is not connected to a network. The administrator loaded the Fix Pack DVD into the drive. The updates command fails with an error stating that the local SAS optical drive is busy.

What must be verified before attempting to use the optical drive?

- A. That the appropriate SAS adapter is allocated to the VIO LPAR.
- B. That the device is mounted with Read/Write permissions.
- C. That the media repository on the VIO LPAR is forced offline.
- D. That the optical device is allocated to the VIO LPAR.

Correct Answer: D



QUESTION 7

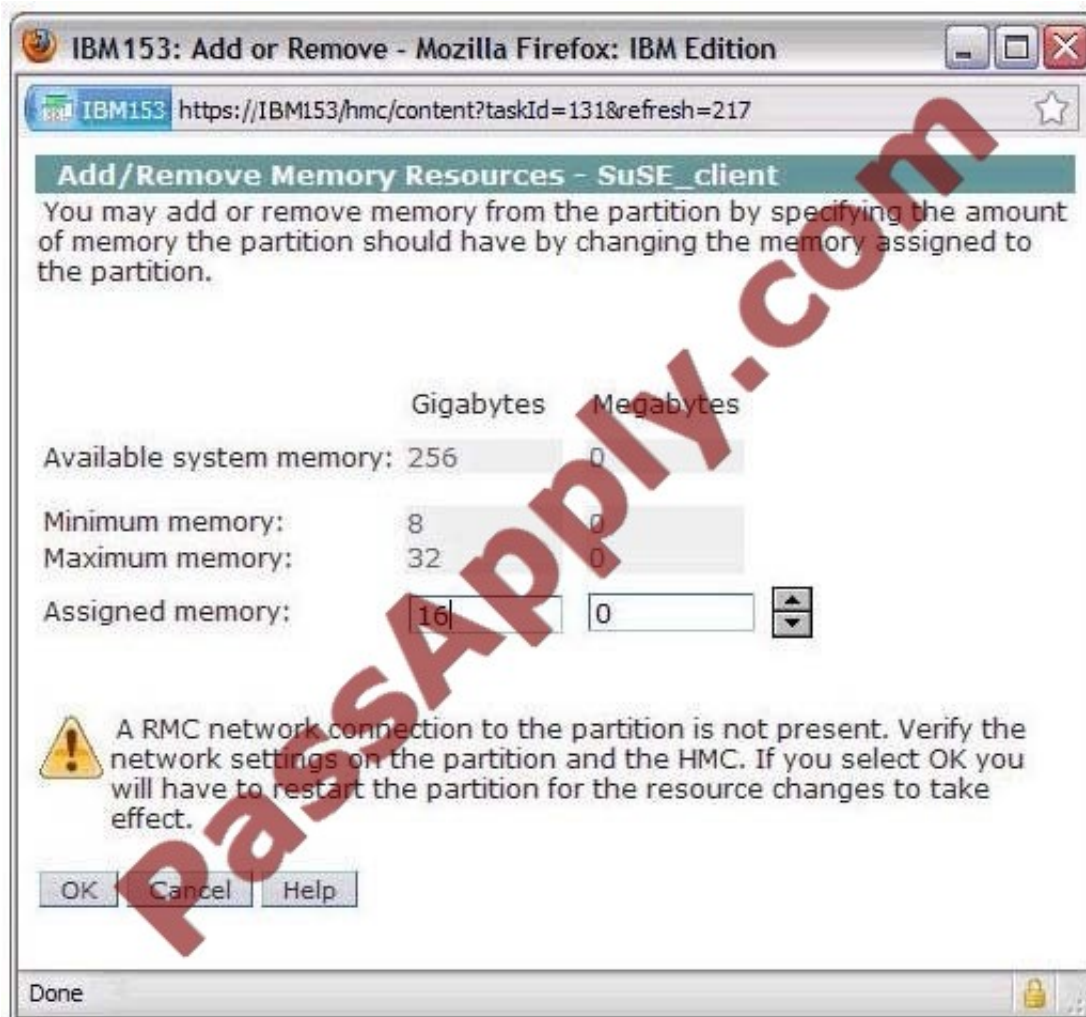
An architect is planning to use an existing NIM server to back up and restore VIO server partitions. In addition to the backup of the VIO Server (VIOS), what is needed to successfully complete a restore operation?

- A. A backup of the profile data from the VIOS partition.
- B. A valid LPP Source on the NIM partition and an extracted SPOT from the VIOS backup.
- C. A copy of the volume group structures and a list of device mappings from the VIOS partition.
- D. A copy of the VIOS bosinst. data from the VIOS partition.

Correct Answer: C

QUESTION 8

An administrator has installed a Linux LPAR using virtual storage and virtual networking on a POWER7 system and is attempting to DLPAR additional memory into the LPAR. They see the following error message during the DLPAR operation.



Which action will resolve this issue?



- A. Add the HMC to the /etc/hosts file.
- B. Configure a network on the same subnet on the HMC.
- C. Install the IBM Installation Toolkit for Linux
- D. Upgrade the version on Linux to support memory DLPAR.

Correct Answer: C

QUESTION 9

Which of the following is required when configuring an LPAR that will later be used for Live Partition Mobility?

- A. All physical I/O must be allocated as "Desired" in LPAR properties
- B. Virtual Fibre Channel adapters must be marked as "Desired".
- C. Virtual Ethernet adapters must be configured as EtherChannels.
- D. Virtual SCSI adapters must be marked as "Desired".

Correct Answer: A

QUESTION 10

After installing a new VIO server partition an administrator noticed that the time zone is incorrectly set to CST6DST. The administrator would like the time zone set to Europe/London. Which command will achieve this?

- A. chdate -timezone Europe/London
- B. chzone -zone Europe/London
- C. chtime -tz Europe/London
- D. chsys -timezone Europe/London

Correct Answer: A

QUESTION 11

An administrator has dynamically allocated a new virtual FC adapter to an AIX client. When running cfgrngr on the client, the administrator receives the following error:

Method error (/usr/lib/methods/cfg_vfc -l fcs0):

0514-040 Error initializing a device into the kernel

Which of the following could explain the error?

- A. The client adapter has been configured to use a 32bit kernel.



- B. The files `devices.vdevice.vfc-client.rte` needs to be installed.
- C. The physical fibre channel adapter on the VIO server does not support NPIV.
- D. The client adapter has been configured to use an invalid virtual server adapter

Correct Answer: D

QUESTION 12

An architect is planning to configure a Power 750 server with redundant VIO Servers and multiple client LPARs. What tool can be used to plan and design the IVE setup for the LPARs?

- A. IBM System Director
- B. Advanced System Management Interface
- C. Integrated Visualization Manager
- D. System Planning Tool

Correct Answer: D

[Latest C4040-109 Dumps](#)

[C4040-109 Practice Test](#)

[C4040-109 Braindumps](#)



VCE & PDF

PassApply.com

<https://www.passapply.com/C4040-109.html>

2021 Latest passapply C4040-109 PDF and VCE dumps Download

To Read the [Whole Q&As](#), please purchase the [Complete Version](#) from [Our website](#).

Try our product !

100% Guaranteed Success

100% Money Back Guarantee

365 Days Free Update

Instant Download After Purchase

24x7 Customer Support

Average 99.9% Success Rate

More than 800,000 Satisfied Customers Worldwide

Multi-Platform capabilities - [Windows](#), [Mac](#), [Android](#), [iPhone](#), [iPod](#), [iPad](#), [Kindle](#)

We provide exam PDF and VCE of Cisco, Microsoft, IBM, CompTIA, Oracle and other IT Certifications. You can view Vendor list of All Certification Exams offered:

<https://www.passapply.com/allproducts>

Need Help

Please provide as much detail as possible so we can best assist you.

To update a previously submitted ticket:



 One Year Free Update <p>Free update is available within One Year after your purchase. After One Year, you will get 50% discounts for updating. And we are proud to boast a 24/7 efficient Customer Support system via Email.</p>	 Money Back Guarantee <p>To ensure that you are spending on quality products, we provide 100% money back guarantee for 30 days from the date of purchase.</p>	 Security & Privacy <p>We respect customer privacy. We use McAfee's security service to provide you with utmost security for your personal information & peace of mind.</p>
---	---	--

Any charges made through this site will appear as Global Simulators Limited.

All trademarks are the property of their respective owners.

Copyright © passapply, All Rights Reserved.