



# C2020-632<sup>Q&As</sup>

IBM Cognos 10 BI Metadata Model Developer

## Pass IBM C2020-632 Exam with 100% Guarantee

Free Download Real Questions & Answers **PDF** and **VCE** file from:

<https://www.passapply.com/C2020-632.html>

100% Passing Guarantee  
100% Money Back Assurance

Following Questions and Answers are all new published by IBM Official Exam Center

-  **Instant Download** After Purchase
-  **100% Money Back** Guarantee
-  **365 Days** Free Update
-  **800,000+** Satisfied Customers





### QUESTION 1

When importing metadata into Framework Manager from a relational database, which of the following can be controlled by the modeler performing the import?

- A. Specifying the item names in various languages.
- B. Specifying the usage property for generated query items.
- C. Converting inner joins in the database to outerjoins in the model.
- D. Generating relationships based on existing primary and foreign key relationships in the database.

Correct Answer: D

### QUESTION 2

The database table below would typically be found in what data structure?

Product line code	Product line	Product type code	Product type	Product number	Product
1	A	4	Packs	29	Canyon Mule Carryal
1	A	5	Lanterns	30	Firefly Lite
1	A	5	Lanterns	31	Firefly Mapreader
1	A	5	Lanterns	32	Firefly 2
1	A	5	Lanterns	34	Firefly Extreme
1	A	1	Cooking Gear	3	TrailChef Kitchen Kit
1	A	1	Cooking Gear	4	TrailChef Cup
1	A	1	Cooking Gear	5	TrailChef Cook Set
1	A	1	Cooking Gear	7	TrailChef Single Flame
1	A	2	Tents	14	Star Gazer 3
1	A	3	Sleeping Bags	22	Hibernator Pillow
1	A	4	Packs	28	Canyon Mule Cooler
1	A	5	Lanterns	33	Firefly 4
1	A	5	Lanterns	40	EverGlow Lamp
1	A	1	Cooking Gear	10	TrailChef Utensils
1	A	2	Tents	11	Star Lite
1	A	2	Tents	12	Star Dome
1	A	3	Sleeping Bags	19	Hibernator Extreme
1	A	3	Sleeping Bags	20	Hibernator Self - Inflating Mat
1	A	1	Cooking Gear	6	TrailChef Deluxe Cook Set

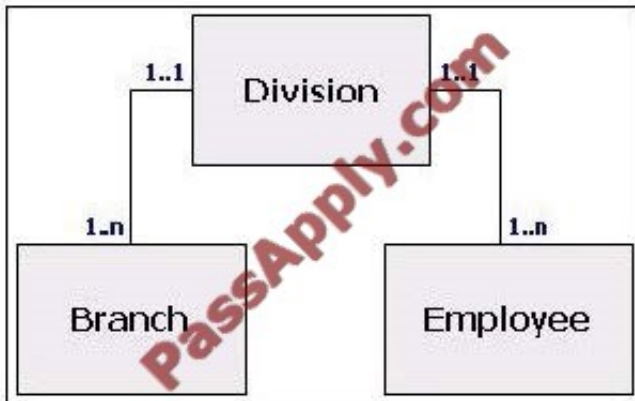
- A. Cartesan
- B. Normalized
- C. Operational
- D. Star schema

Correct Answer: D

### QUESTION 3



What question should a data modeler answer before accepting this proposed operational data structure?



- A. Should all three tables be consolidated into one?
- B. Should a role playing dimension be created?
- C. Are Branch and Employee dimension tables or fact tables?
- D. Is there a direct relationship between Branch and Employee?

Correct Answer: D

#### QUESTION 4

What is true of a Framework Manager model of an operational database lacking a time dimension?

- A. Virtual star schema models require a time dimension for multi-fact queries.
- B. Report authors cannot create multi-fact, time-based queries.
- C. Time-based rollups for multi-fact queries may be difficult to handle.
- D. Report authors cannot create multi-fact, time-based queries unless using a union.

Correct Answer: C

#### QUESTION 5

In Framework Manager, why is it recommended that modelers alter the default all-inclusive select statements of data source query subjects as little as possible?

- A. To generate the most efficient SQL at run time and simplify model maintenance.
- B. To prevent the exclusion of columns from a table that may be required in future reports.
- C. To prevent improperly constructed SQL and reduce issues with model documentation and readability.
- D. To provide authors with access to all columns in a database table which reduces requests to the modeler?



Correct Answer: A

---

#### QUESTION 6

A user-defined function imported into Framework Manager can be viewed and used in the following locations?

- A. Viewed in the Explorer and used in the expression editor.
- B. Viewed in the Project Viewer and used in the expression editor.
- C. Viewed in the Explorer and used in the SQL of a model query subject.
- D. Viewed in the Diagram and used in the SQL of a data source query subject.

Correct Answer: A

---

#### QUESTION 7

What does a star schema database structure typically consist of?

- A. De-normalized hierarchy of dimension tables and fact tables.
- B. Normalized dimension tables and detailed fact tables.
- C. Normalized dimension tables and summarized fact tables.
- D. De-normalized dimension tables and fact tables.

Correct Answer: D

---

#### QUESTION 8

Which of the following is true when applying object security in Framework Manager?

- A. If beginning to apply security by specifying object security on an object with no children, all other objects remain accessible to all users.
- B. If beginning to apply security by specifying object security on an object with no children, all other objects will not be accessible to all users.
- C. Allow overrides Deny if specified in the properties of the object.
- D. Child objects only inherit security from their parent if the Inherit property is set to Yes.

Correct Answer: B

---

#### QUESTION 9

Which of the following components does a basic Cognos 10 stitch query consist of?



- A. SC() function, full outer join, multiple queries that each query exclusive information.
- B. SC() function, full outer join, multiple queries that query some of the same information.
- C. Coalesce function, full outer join, multiple queries that each query exclusive information.
- D. Coalesce function, full outer join, multiple queries that query some of the same information.

Correct Answer: D

---

#### QUESTION 10

After metadata is imported into Framework Manager or a new query subject is created, it is recommended to first verify which one of the following property settings?

- A. Usage
- B. Aggregate
- C. Data Type
- D. Semi-Aggregate

Correct Answer: A

---

#### QUESTION 11

In Framework Manager, when using star schemagroupings in the business view, conformed dimensions can be identified by which one of the following?

- A. Using a different query subject icon for display in the studios.
- B. Viewing the properties of the query subjects in Report Studio.
- C. Viewing the properties of the query subjects in Framework Manager.
- D. Using the same name for the dimension in each star schema grouping.

Correct Answer: D

---

#### QUESTION 12

What technique can Framework Manager modelers use to implement a time dimension for models that lack a time dimension?

- A. Create relationships from date fields in one dimension to date fields in another dimension.
- B. Use parameter maps to map date values in one query subject to date values in another query subject.
- C. Use the Time Dimension wizard to generate a time dimension and create the appropriate relationships.



D. Identify a time dimension table source, import into the model and create relationships to fact query subjects.

Correct Answer: D

[Latest C2020-632 Dumps](#)

[C2020-632 PDF Dumps](#)

[C2020-632 Practice Test](#)



To Read the [Whole Q&As](#), please purchase the [Complete Version](#) from [Our website](#).

## Try our product !

100% Guaranteed Success  
100% Money Back Guarantee  
365 Days Free Update  
Instant Download After Purchase  
24x7 Customer Support  
Average 99.9% Success Rate  
More than 800,000 Satisfied Customers Worldwide  
Multi-Platform capabilities - [Windows](#), [Mac](#), [Android](#), [iPhone](#), [iPod](#), [iPad](#), [Kindle](#)

We provide exam PDF and VCE of Cisco, Microsoft, IBM, CompTIA, Oracle and other IT Certifications. You can view Vendor list of All Certification Exams offered:

<https://www.passapply.com/allproducts>

## Need Help

Please provide as much detail as possible so we can best assist you.  
To update a previously submitted ticket:



 <p><b>One Year Free Update</b> Free update is available within One Year after your purchase. After One Year, you will get 50% discounts for updating. And we are proud to boast a 24/7 efficient Customer Support system via Email.</p>	 <p><b>Money Back Guarantee</b> To ensure that you are spending on quality products, we provide 100% money back guarantee for 30 days from the date of purchase.</p>	 <p><b>Security &amp; Privacy</b> We respect customer privacy. We use McAfee's security service to provide you with utmost security for your personal information &amp; peace of mind.</p>
---	---	--

Any charges made through this site will appear as Global Simulators Limited.  
All trademarks are the property of their respective owners.  
Copyright © passapply, All Rights Reserved.