



C2020-013^{Q&As}

IBM SPSS Modeler Data Mining for Business Partners v2

Pass IBM C2020-013 Exam with 100% Guarantee

Free Download Real Questions & Answers **PDF** and **VCE** file from:

<https://www.passapply.com/C2020-013.html>

100% Passing Guarantee
100% Money Back Assurance

Following Questions and Answers are all new published by IBM Official Exam Center

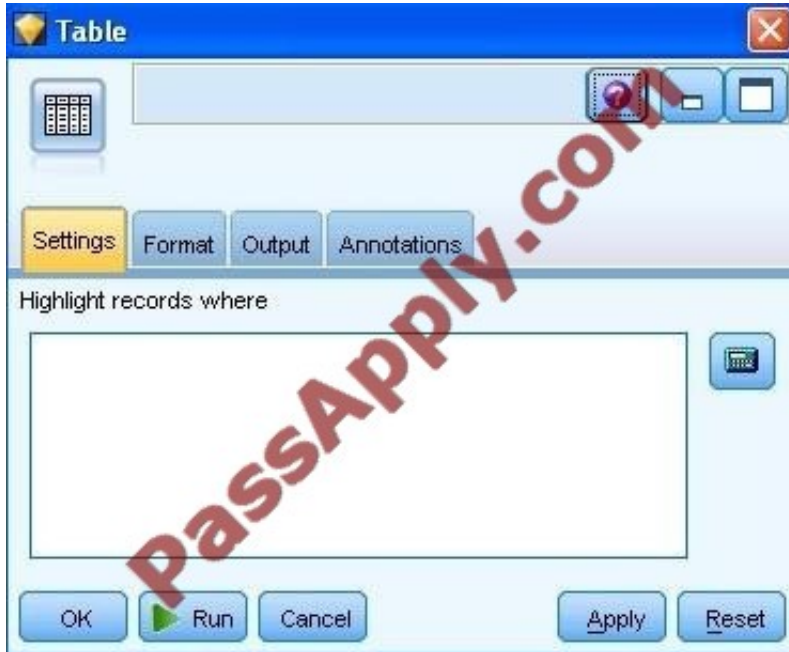
-  **Instant Download** After Purchase
-  **100% Money Back** Guarantee
-  **365 Days** Free Update
-  **800,000+** Satisfied Customers





QUESTION 1

True or false: only Terminal nodes (Graphs, Modeling, Output, Export) have a Run button as displayed in the graphic.



- A. True
- B. False

Correct Answer: A

QUESTION 2

Which method would be used on the Merge node in order to combine a file containing 100 products and a file containing 50 suppliers and retain only the matching records?

- A. Inner join
- B. Anti-join
- C. Full outer join
- D. Partial outer join

Correct Answer: A

QUESTION 3

Which node should be used if the user wanted to see the number of cases in each category for a variable of Categorical Measurement level?



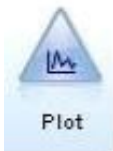
- A.
- B.
- C.
- D.



Distribution



Web



Plot



Histogram

Correct Answer: A

QUESTION 4

Which node is used to read data from a comma delimited text file?

- A. Var. File
- B. Data Collection
- C. Fixed File
- D. Statistics File

Correct Answer: A

QUESTION 5

Examine the Data Audit output shown below.



Field	Measurement	Outliers	Extremes	Action	Impute Mi...	Method	% Complete	Valid
ACCOM	Nominal	--	--		Never	Fixed	100	
COUNTRY	Nominal	--	--		Never	Fixed	100	
CUSTID	Nominal	--	--		Never	Fixed	100	
DIST_TO_BE...	Continuous	1	0	None	Never	Fixed	100	
DOB	Nominal	--	--		Never	Fixed	100	
GENDER	Nominal	--	--		Never	Fixed	98.681	
HOLCODE	Nominal	--	--		Never	Fixed	100	
HOLCOST	Continuous	9	1	Discard	Never	Fixed	97.889	
NAME	Nominal	--	--		Never	Fixed	100	
NIGHTS	Continuous	0	0	Nullify	Never	Fixed	100	
NUMPARTY	Continuous	6	0	None	Never	Fixed	100	
POOL	Flag	--	--		Never	Fixed	100	
REGION	Nominal	--	--		Never	Fixed	100	
TRAVDATE	Nominal	--	--		Never	Fixed	100	

What action will occur in a generated Outlier and Extreme Supernode for HOLCOST?

- A. Nine records will be set to the system missing (null) value for HOLCOST.
- B. Ten records will be deleted.
- C. Ten records will be set to the system missing (null) value for HOLCOST.
- D. Nine records will be deleted.

Correct Answer: B

QUESTION 6

True or false: the Feature Selection node adds a Model Nugget to the stream.

- A. True
- B. False

Correct Answer: A

QUESTION 7

True or false: in the stream below , the CHAID node and Neural Net node can be combined in a single Supernode.



- A. True
- B. False

Correct Answer: B

QUESTION 8

What will occur if the deployment data has a very different range than the data that was used in modeling?

- A. The model will underpredict.
- B. The model will overpredict.
- C. The model may overpredict or underpredict.
- D. The model nugget will automatically nullify those cases that are out of range .075.

Correct Answer: C

QUESTION 9

To correctly read the Excel?file shown below,



A	B	C	D	E	F
Basic Customer Information: Example Layout					
CUSTOMER_ID	GENDER	CREDITLIMIT	ZODIAC	E-MAIL ADDRESS	ZIP
723	F	9026	1	name7502@tnet.fr	1818BO
724	M	5223	3	name25485@wwmail.org	1132DG
725	F	668	8	name15543@wwmail.de	1803YT
726	M	8302	6	name28335@zigzag.be	1205WR
727	F	997	8	name5354@tnet.jp	1711ON
728	M	1955	3	name20637@wwmail.es	1055FG
729	F	6898	5	name20636@wwmail.es	1254MR
730	F	6488	11	name10414@tnet.inc	1723DG
730	F	6488	11	name10414@tnet.inc	1723DG
730	F	6488	11	name10414@tnet.inc	1723DG

Which dialog box settings are appropriate?

- A.
- B.



Preview Refresh

D:\ModelerCertProject2\Figures\Example File_Item015.xlsx

Data Filter Types Annotations

File type: Excel 2007 (*.xlsx)

Import file: D:\ModelerCertProject2\Figures\Example File_Item015.xlsx

Use named range

Choose worksheet: By index 0 By name

Range on worksheet: Range starts on first non-blank row Explicit range of cells A3 F13

On blank rows: Stop reading

First row has column names

OK Cancel Apply Reset

Preview Refresh

D:\ModelerCertProject2\Figures\Example File_Item015.xlsx

Data Filter Types Annotations

File type: Excel 2007 (*.xlsx)

Import file: D:\ModelerCertProject2\Figures\Example File_Item015.xlsx

Use named range

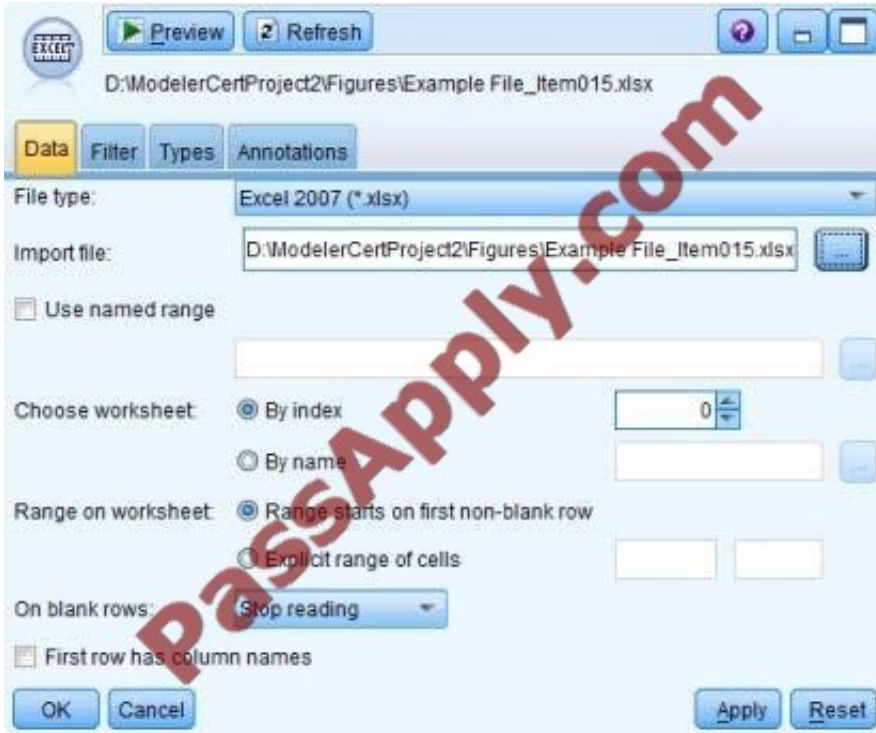
Choose worksheet: By index 0 By name

Range on worksheet: Range starts on first non-blank row Explicit range of cells A3 F13

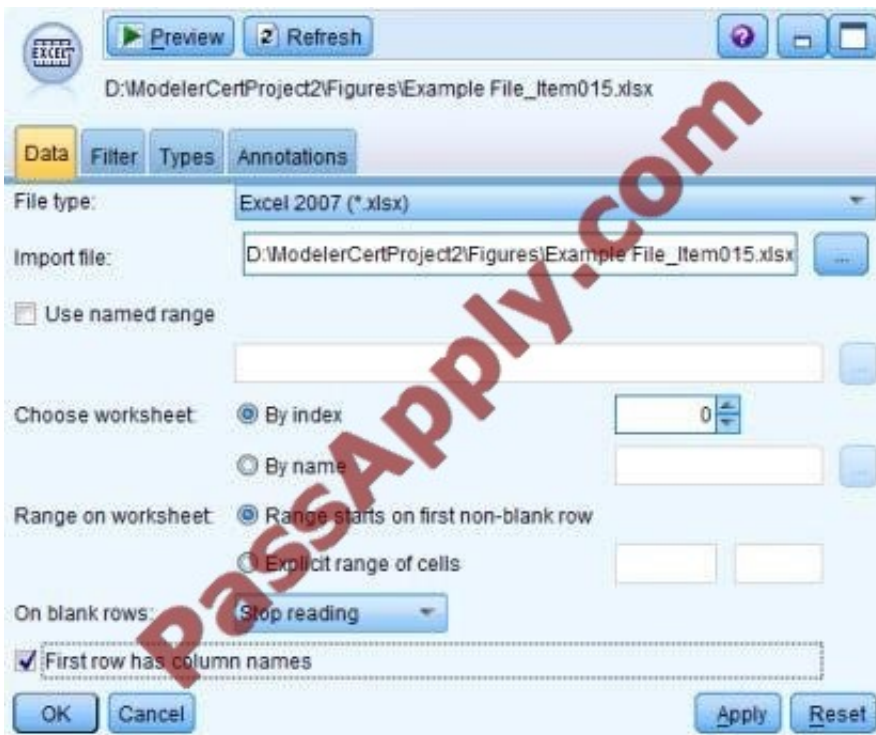
On blank rows: Stop reading

First row has column names

OK Cancel Apply Reset



C.



D.

Correct Answer: A



QUESTION 10

Which node can be used to impute (estimate) missing values?

- A. Data Audit node
- B. Balance node
- C. Filler node
- D. Reclassify node

Correct Answer: A

QUESTION 11

True or false: given the information in the Data Audit Quality table below, The generated Filter node will exclude only the fields logwire, logequi, logtoll, and logcard.

The screenshot shows the 'Quality' tab in Alteryx. At the top, it displays 'Complete fields (%)' as 90.48% and 'Complete records (%)' as 13.1%. Below this is a table with the following columns: Field, Measurement, Outliers, Extre..., Action, Impute Missing, Method, % Complete, Valid Records, Null Value, and En. The table lists fields like logwire, logequi, logtoll, logcard, region, tenure, age, marital, address, income, and ed. A dialog box titled 'Generate Filter from Quality' is open, showing 'Mode' set to 'Include' and 'Fields with quality percentage higher than %' set to 70.0. A large 'PASSAPPLY.COM' watermark is overlaid on the image.

Field	Measurement	Outliers	Extre...	Action	Impute Missing	Method	% Complete	Valid Records	Null Value	En
logwire	Continuous	1	0	None	Never	Fixed	29.6	296	704	
logequi	Continuous	1	0	None	Never	Fixed	38.6	386	614	
logtoll	Continuous	2	0	None	Never	Fixed	47.5	475	525	
logcard	Continuous	2	0	None	Never	Fixed	67.8	678	322	
region	Nominal	--	--		Never	Fixed	100	1000	0	
tenure	Continuous						100	1000	0	
age	Continuous						100	1000	0	
marital	Flag						100	1000	0	
address	Continuous						100	1000	0	
income	Continuous						100	1000	0	
ed	Ordinal						100	1000	0	

- A. True
- B. False

Correct Answer: A

QUESTION 12

A prison system has historical data on prison inmates and wants to find what factors are related to recidivism (return to prison). What type of model would be used?

- A. Segmentation model
- B. Classification model



C. Association model

D. Anomaly model

Correct Answer: B

[C2020-013 PDF Dumps](#)

[C2020-013 VCE Dumps](#)

[C2020-013 Braindumps](#)



To Read the [Whole Q&As](#), please purchase the [Complete Version](#) from [Our website](#).

Try our product !

100% Guaranteed Success
100% Money Back Guarantee
365 Days Free Update
Instant Download After Purchase
24x7 Customer Support
Average 99.9% Success Rate
More than 800,000 Satisfied Customers Worldwide
Multi-Platform capabilities - [Windows](#), [Mac](#), [Android](#), [iPhone](#), [iPod](#), [iPad](#), [Kindle](#)

We provide exam PDF and VCE of Cisco, Microsoft, IBM, CompTIA, Oracle and other IT Certifications. You can view Vendor list of All Certification Exams offered:

<https://www.passapply.com/allproducts>

Need Help

Please provide as much detail as possible so we can best assist you.
To update a previously submitted ticket:



 <p>One Year Free Update Free update is available within One Year after your purchase. After One Year, you will get 50% discounts for updating. And we are proud to boast a 24/7 efficient Customer Support system via Email.</p>	 <p>Money Back Guarantee To ensure that you are spending on quality products, we provide 100% money back guarantee for 30 days from the date of purchase.</p>	 <p>Security & Privacy We respect customer privacy. We use McAfee's security service to provide you with utmost security for your personal information & peace of mind.</p>
---	---	--

Any charges made through this site will appear as Global Simulators Limited.
All trademarks are the property of their respective owners.
Copyright © passapply, All Rights Reserved.