



# A00-270<sup>Q&As</sup>

SAS BI Content Development

## Pass SASInstitute A00-270 Exam with 100% Guarantee

Free Download Real Questions & Answers **PDF** and **VCE** file from:

<https://www.passapply.com/a00-270.html>

100% Passing Guarantee  
100% Money Back Assurance

Following Questions and Answers are all new published by SASInstitute Official Exam Center

-  **Instant Download** After Purchase
-  **100% Money Back** Guarantee
-  **365 Days** Free Update
-  **800,000+** Satisfied Customers





#### QUESTION 1

In SAS Web Report Studio, when distributing a report, what are the email output options? (Choose two.)

- A. SAS report
- B. HTML
- C. RTF
- D. PDF

Correct Answer: BD

---

#### QUESTION 2

Which data sources can be used to create reports and analysis using SAS Web Report Studio? (Choose two.)

- A. SAS Information Map
- B. SAS OLAP cube
- C. SAS Stored Process
- D. SAS table

Correct Answer: AC

---

#### QUESTION 3

A user requests a new report that the developer has several shared prompt groups available to incorporate. However, the user does not want the prompts separated or know what group the prompts belong to?

Which features of the prompting framework should the developer use?

- A. Unified Groups
- B. Selection Groups
- C. Transparent Groups
- D. Standard Groups

Correct Answer: B

---

#### QUESTION 4

In SAS information MAP Studio, where can you set the initial Creation Rule for relationship between data sources by default?

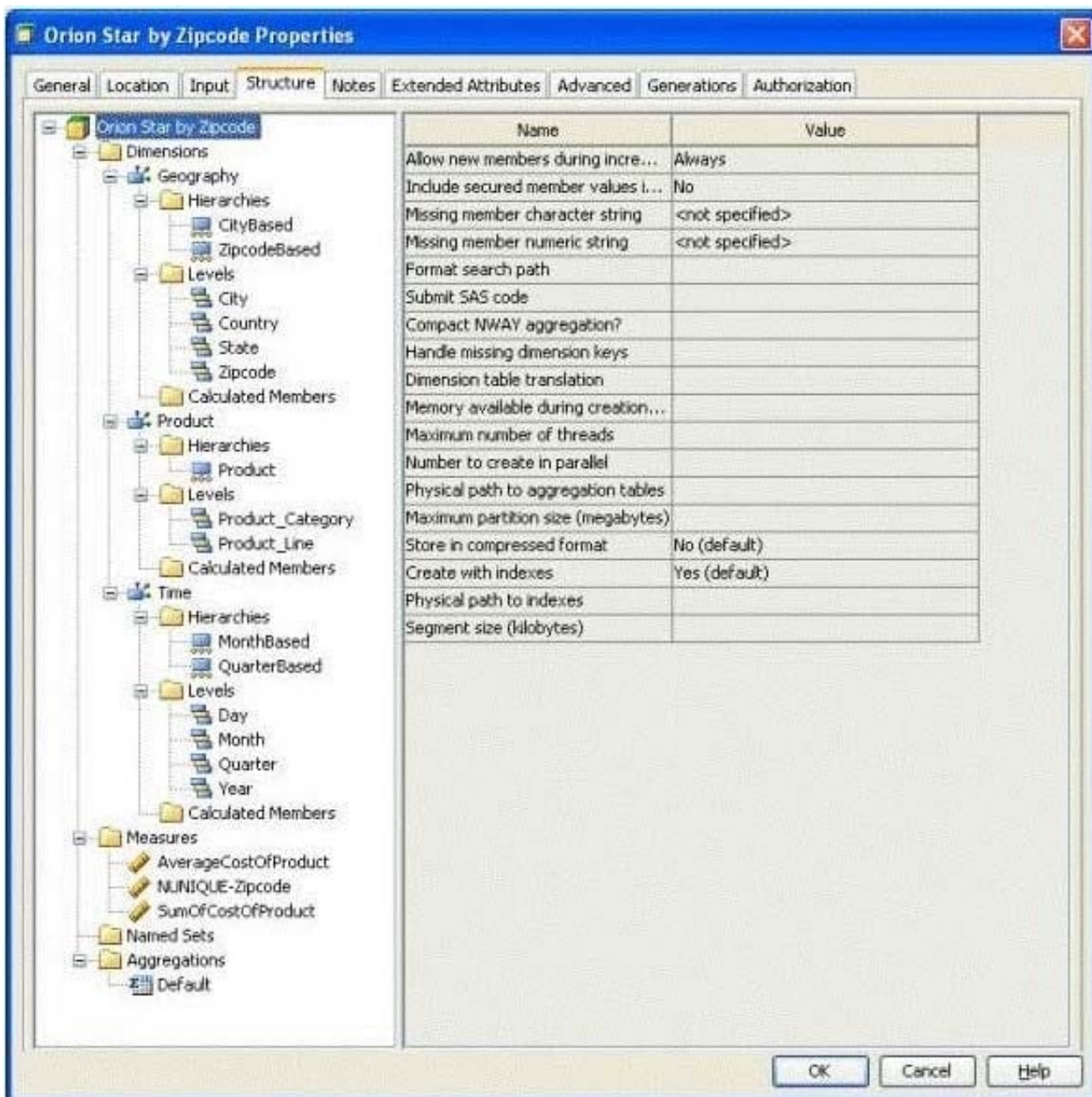


- A. Resource pane
- B. Design tab
- C. Properties pane
- D. Options window

Correct Answer: D

### QUESTION 5

Refer to the exhibit.



A SAS Information Map has been built with the SAS OLAP Cube that has been structured as shown in the exhibit.



You want to generate a SAS Web Report Studio report using the information map that contains the cube data.

Which selection is valid?

- A. AverageCostOfProduct, City Based, Zipcode Based, Product, Month Based, Quarter Based
- B. AverageCostOfProduct, City Based, Zipcode Based, Product, Month Based
- C. AverageCostOfProduct, City Based, Product, Month Based, Quarter Based
- D. AverageCostOfProduct, City Based, Product, Month Based

Correct Answer: D

---

#### QUESTION 6

A dashboard shows a horizontal row of three static Traffic Light gauges. Each Traffic Light gauge is positioned vertically instead of horizontally.

What should be done to position each gauge horizontally?

- A. Select Flip Horizontal on the gauge properties.
- B. Ensure the dashboard and indicator are the correct width to display three gauges.
- C. Reduce the display size of the gauge sufficiently to allow all three to fit.
- D. Change to a gauge type that supports horizontal display of multiple gauges.

Correct Answer: B

---

#### QUESTION 7

A SAS task is performed in Microsoft Excel against 2 million rows of data in a table that is registered to the metadata sever. What is the maximum number of rows that can be processed?

- A. 500
- B. 65536
- C. 2 million
- D. Excel's limitation based on the version of Excel

Correct Answer: C

---

#### QUESTION 8

In SAS Management Console, a content developer would like to create a dynamic prompt in a stored process for a numeric column.



Which data sources can the developer use for this action? (Choose two)

- A. Table
- B. Stored processes
- C. Information map
- D. OLAP cube

Correct Answer: AB

### QUESTION 9

Refer to the exhibit:

```
25      %STPBEGIN;  
26  
27      *   End EG generated code (do not edit this line);  
28  
29  
30      options validvarname=any;  
31  
32      libname osdm meta library='Orion Reporting Library';  
ERROR: No metadata objects found matching the specified URI.  
ERROR: Error in the LIBNAME statement.
```

What is causing the error message from the stored process created from a SAS program, given the log display in the exhibit?

- A. There is no libref OSDM registered in the metadata
- B. The Libname statement is not compatible with the VALIDVARNAMR option
- C. There is no library named Orion Reporting registered in the metadata
- D. The stored process is not registered to the Orion reporting Library in the metadata

Correct Answer: C

### QUESTION 10

Refer to the exhibit.



```
14 +*ProcessBody;
15 +
16 +%STPBEGIN;
17 +
18 +OPTIONS VALIDVARNAME=ANY;
19 +
20 +* End EG generated code (do not edit this line);
21 +
22 +LIBNAME OSDM META LIBRARY="Orion Reporting Library";
ERROR: No metadata objects found matching the specified URI.
ERROR: Error in the LIBNAME statement.
23 +
24 +PROC GCHART DATA=OSDM.CUSTORDERS;
ERROR: Libname OSDM is not assigned.
```

What is causing the error message from the stored process created from a SAS program, given the log displayed in the exhibit?

- A. There is no libref OSDM registered in the metadata.
- B. There is no library named Orion Reporting Library registered in the metadata.
- C. The Libname statement is not compatible with the VALIDVARNAME option.
- D. The stored process is not registered to the Orion Reporting Library in the metadata.

Correct Answer: B

#### QUESTION 11

In SAS Information Map Studio, there is a date/time data item called MYDATE based on a physical column that displays as 24Mar2010:13:50:00. You are creating a prompt and don't want the time included. How can this be accomplished?

- A. Apply a DATE7. format to the data item before building the prompt.
- B. Apply the DATEPART() SAS function on the filter.
- C. Apply a DATE7. format on the filter.
- D. In the properties for MYDATE, change the type from Timestamp to Date.

Correct Answer: B

#### QUESTION 12

Where can shared prompts be stored?



- A. ASAS Folders location
- B. An operating system location on your machine
- C. An operating system location on the server machine
- D. ASAS Enterprise Guide project

Correct Answer: A

---

#### QUESTION 13

Which capabilities are available when creating a SAS Information Map from a SAS OLAP Cube? (Choose two.)

- A. Associating a SAS Stored process with an information map that uses an OLAP Cube as a data source
- B. Simple filter creation
- C. Creating calculated members
- D. Joining multiple cubes within one information map

Correct Answer: BC

---

#### QUESTION 14

What cannot be used to create reports and analysis using SAS Web Report Studio?

- A. SAS BI Dashboard
- B. SAS Stored Process
- C. SAS table
- D. SAS OLAP cube

Correct Answer: D

---

#### QUESTION 15

In SAS BIDashboard, which indicator property cannot be set when defining an indicator?

- A. Display settings
- B. Zoom percentage
- C. Height and width
- D. Display type

Correct Answer: B

---



VCE & PDF

PassApply.com

<https://www.passapply.com/a00-270.html>

2024 Latest passapply A00-270 PDF and VCE dumps Download

---

[A00-270 PDF Dumps](#)

[A00-270 Practice Test](#)

[A00-270 Study Guide](#)