

Exam : **920-180**

Title : ncts real time Networking

Version : DEMO

1. Which three components are H.323 endpoints? (Choose three.)

- A. Gatekeeper
- B. Terminal
- C. Gateway
- D. Multipoint Control Unit (MCU)
- E. Security Relay

Answer: BCD

2. Which statement is true concerning SIP protocol?

- A. SIP is based on H.323
- B. SIP is an extension of HTTP/1.1
- C. SIP is a component of HTTP/1.1
- D. SIP is based on a request/response transaction model

Answer: D

3. In an H.248 connection model, which is the definition of a context?

- A. Contexts represent the different phases of call setup.
- B. Contexts represent the segregation of call server domains.
- C. Contexts represent associations between collections of terminations.
- D. Contexts represent the difference between signaling traffic, bearer traffic and administration traffic for a device.

Answer: C

4. H.248 is which type of protocol?

- A. a QoS Protocol
- B. a Media Gateway control protocol
- C. a Peer-to-Peer call control protocol
- D. a Real-Time packet encoding protocol

Answer: B

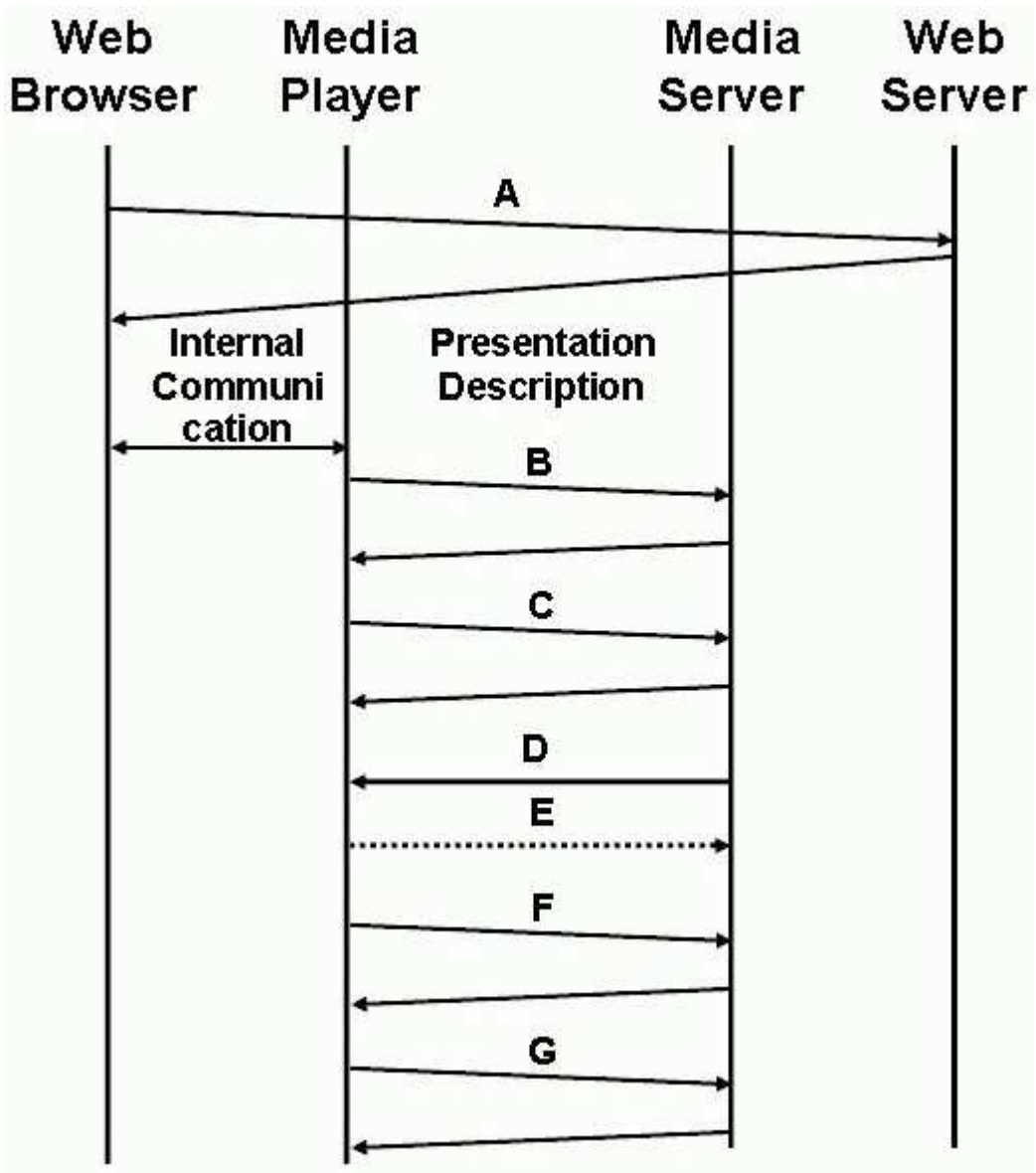
5. Which protocol is used for establishing media streams in H.323?

- A. G.711
- B. H.225.0
- C. H.245
- D. H.450

Answer: C

6. Click on the Exhibit button.

In a typical RTSP operation what type of protocol will be used with transaction A?

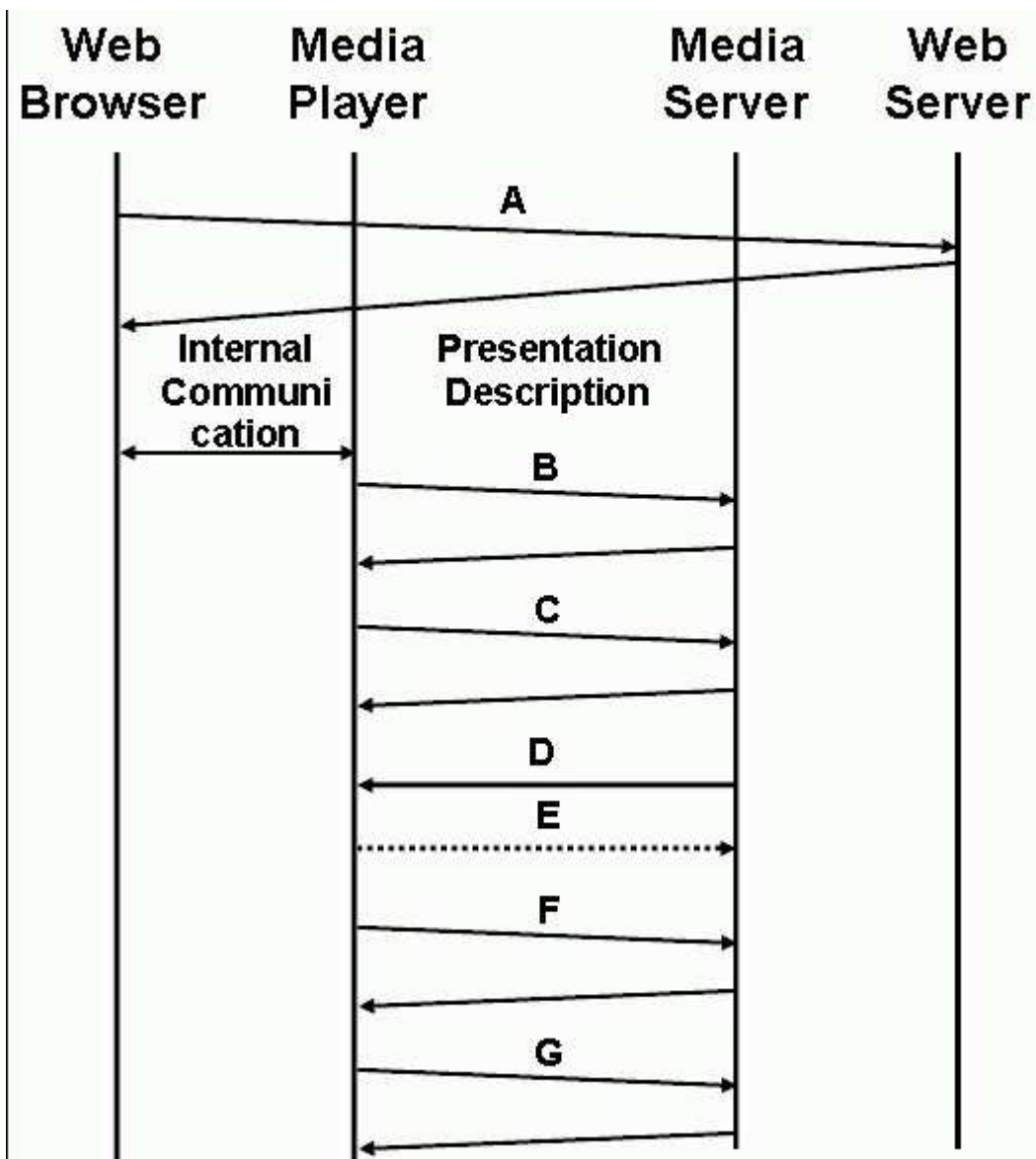


- A. RTP
- B. RTCP
- C. HTTP
- D. RTSP

Answer: C

7. Click on the Exhibit button.

In a typical RTSP operation what type of protocol will be used with transaction C?



- A. RTP
- B. RTCP
- C. HTTP
- D. RTSP

Answer: D

8. Which feature is common to both TCP and RTP?

- A. multicast
- B. error recovery
- C. session protocol
- D. reliable connection
- E. flow/congestion control

Answer: C

9. Several RTP streams can be combined into a single stream. There are two sessions with SSRC=6 and SSRC=23. Which are possible new session numbers? (Choose two.)

- A. 6
- B. 17
- C. 23
- D. 53

Answer: BD

10. Which application can NOT be implemented using SUBSCRIBE/NOTIFY when using SIP protocol?

- A. Codec Re-negotiation
- B. Keypad Press Reporting
- C. Message Waiting Indication
- D. Presence (i.e., "Friends list")

Answer: A

11. How do end users connect to an Optical Ethernet network?

- A. through a DS1 interface
- B. through a DS3 interface
- C. through an optical SONET interface
- D. through a variety of Ethernet interfaces

Answer: D

12. What is a 3G cellular technology?

- A. Advanced Mobile Phone Service (AMPS)
- B. Global System for Mobile Communications (GSM)
- C. General Packet Radio Service (GPRS)
- D. Code Division Multiple Access (CDMA)
- E. Universal Mobile Telecommunications Service (UMTS)

Answer: E

13. When is Multiprotocol Label Switching (MPLS) local recovery chosen over MPLS global recovery?

- A. When faster recovery is sought.
- B. When too few Label Switch Paths (LSPs) are setup.
- C. When insufficient bandwidth is available in the network.
- D. When the network is NOT very meshed (small degree of connectivity).

Answer: A

14. What technology allows a SONET ring to act like the backplane of an Ethernet switch?

- A. TDI

B. STS C.

RPR D.

VLAN

Answer: C

15. Which tasks must be performed by NAT devices to support H.323 over UDP? (Choose two.)

A. recalculation of the H.323 Security code

B. recalculation of the transport layer checksum

C. alteration of IP addresses embedded in the H.323 packet

D. H.323 Gatekeeper tasks (i.e. NAT must also be H.323 Gatekeeper)

Answer: BC

16. Which is a difference between basic NAT and NAPT?

A. NAPT creates dynamic bindings but basic NAT does NOT.

B. NAPT supports full cone operation but basic NAT does NOT.

C. Basic NAT does stateful packet inspection and NAPT does NOT.

D. Basic NAT has a one-to-one mapping of IP addresses and NAPT supports a many-to-one mapping.

Answer: D

17. Which protocols are used to detect the failures that impact Label Switch Path (LSP) traffic?

A. RSVP-TE Hello and ITU-T Y1711

B. OSPF-TE keep-alive and ATM PNNI C.

RSVP-TE Hello and OSPF keep-alive D.

ITU-T Y1711 and OSPF-TE keep-alive

Answer: A

18. The FRF.11 specification is associated with which aspect of real-time networking?

A. Frame Relay QoS

B. Frame Fragmentation

C. Frame Relay Voice

D. Frame Relay Service Category

Answer: C

19. A customer currently is running a SONET UPSR network and would like to upgrade to RPR. How does RPR improve bandwidth efficiency over SONET UPSR?

A. RPR uses VLANS

B. RPR has Spatial reuse

C. RPR is connectionless

D. RPR uses Ethernet Headers

Answer: B

20. Which is the correct definition of STP as applied to an Ethernet switch?

- A. Signal Transfer Point
- B. Simple Timing Protocol
- C. Spanning Tree Protocol
- D. Switch Transaction Protocol

Answer: C

Trying our product !



- ★ **100%** Guaranteed Success
- ★ **100%** Money Back Guarantee
- ★ **365 Days** Free Update
- ★ **Instant Download** After Purchase
- ★ **24x7** Customer Support
- ★ Average **99.9%** Success Rate
- ★ More than **69,000** Satisfied Customers Worldwide
- ★ Multi-Platform capabilities - **Windows, Mac, Android, iPhone, iPod, iPad, Kindle**

Need Help

Please provide as much detail as possible so we can best assist you.

To update a previously submitted ticket:



 One Year Free Update <p>Free update is available within One Year after your purchase. After One Year, you will get 50% discounts for updating. And we are proud to boast a 24/7 efficient Customer Support system via Email.</p>	 Money Back Guarantee <p>To ensure that you are spending on quality products, we provide 100% money back guarantee for 30 days from the date of purchase.</p>	 Security & Privacy <p>We respect customer privacy. We use McAfee's security service to provide you with utmost security for your personal information & peace of mind.</p>
---	---	--

Guarantee & Policy | Privacy & Policy | Terms & Conditions

Any charges made through this site will appear as Global Simulators Limited.

All trademarks are the property of their respective owners.

Copyright © 2004-2014, All Rights Reserved.