



74-409^{Q&As}

Server Virtualization with Windows Server Hyper-V and System Center

Pass Microsoft 74-409 Exam with 100% Guarantee

Free Download Real Questions & Answers **PDF** and **VCE** file from:

<https://www.passapply.com/74-409.html>

100% Passing Guarantee
100% Money Back Assurance

Following Questions and Answers are all new published by Microsoft
Official Exam Center

-  **Instant Download** After Purchase
-  **100% Money Back** Guarantee
-  **365 Days** Free Update
-  **800,000+** Satisfied Customers





QUESTION 1

You use System Center 2012 R2 Operations Manager to monitor the datacenter infrastructure and applications for an organization. You import the SQL Server Management Pack. You are unable to monitor long-running SQL Server Agent

jobs. You observe that the SQL Server Agent Jobs View displays zero instances.

Other SQL Server-related monitoring operations function as expected.

You need to monitor long-running SQL Server Agent jobs.

What should you do?

- A. Enable the Job Duration unit monitor.
- B. Enable agent proxy for SQL Servers.
- C. Enable the object discovery for the SQL Server Agent Job class.
- D. End maintenance mode for the SQL Server 2012 Computers group.

Correct Answer: C

<http://blogs.technet.com/b/kevinholman/archive/2011/08/05/how-to-monitor-sql-agent-jobs-using-the-sqlmanagement-pack-and-opsmgr.aspx> Ref: <http://www.toolzz.com/?p=162>

QUESTION 2

A company plans to create a Hyper-V test environment that will contain three virtual machines (VMs). The VMs are projected to grow 1 GB in size each day. The VMs will be configured as follows:

Virtual Machine Name	Operating System	Server Role
NYC-EX1	Windows Server 2012	Exchange Server 2013
NYC-DC1	Windows Server 2012	Active Directory Domain Services
NYC-SQL1	Windows Server 2008 R2	SQL Server 2008

You must minimize the required amount of storage space by using the least amount of administrative effort.

You need to recommend a storage solution.

Which type of virtual disk type should you configure for each VM?

- A. differencing
- B. dynamically expanding
- C. fixed
- D. pass-through



Correct Answer: B

<http://www.petri.co.il/choosing-hyper-v-storage-virtual-hard-disks-2.htm>

<http://searchservirtualization.techtarget.com/tip/Fixed-vs-dynamic-disks-for-Hyper-V-virtual-machines>

QUESTION 3

You are the virtualization administrator for an organization. You use System Center 2012 R2 Virtual Machine Manager (VMM) to configure a virtual machine (VM) template that will host a new application.

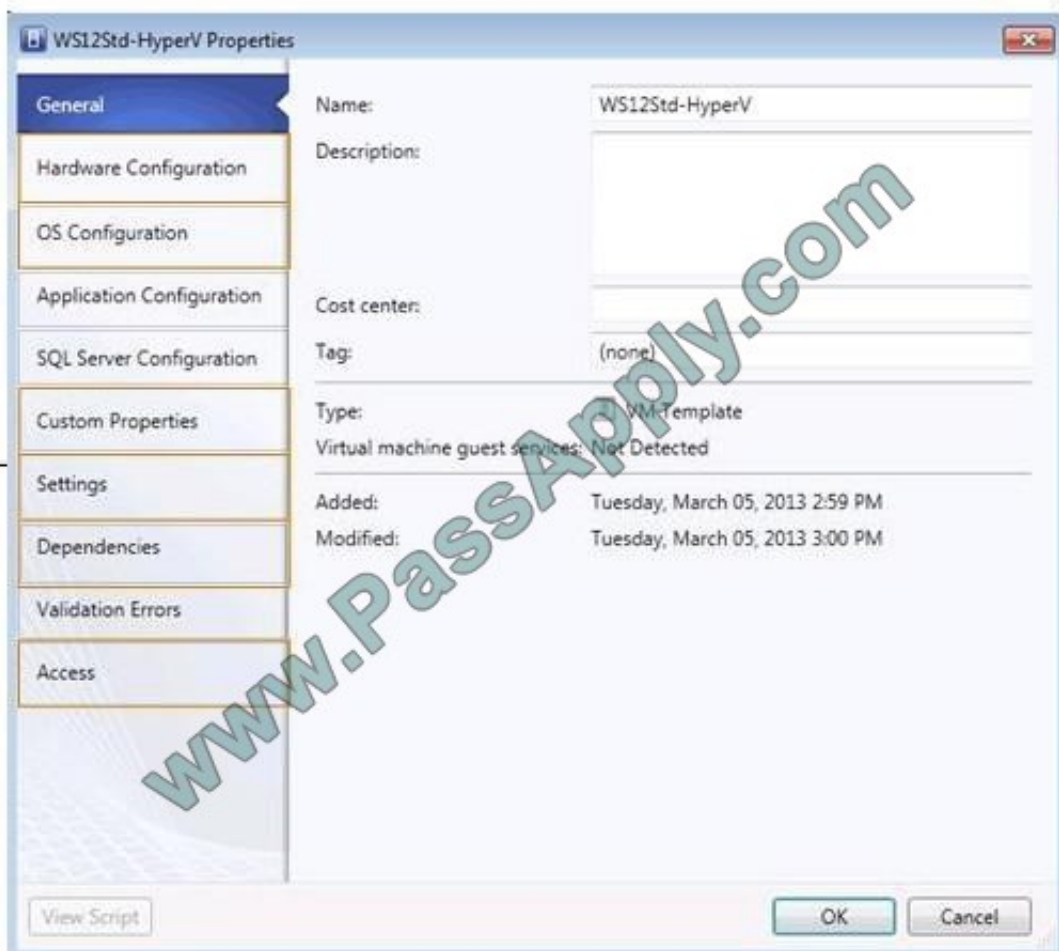
You have the following requirements for new VMs that host the application:

New VMs must be highly available.

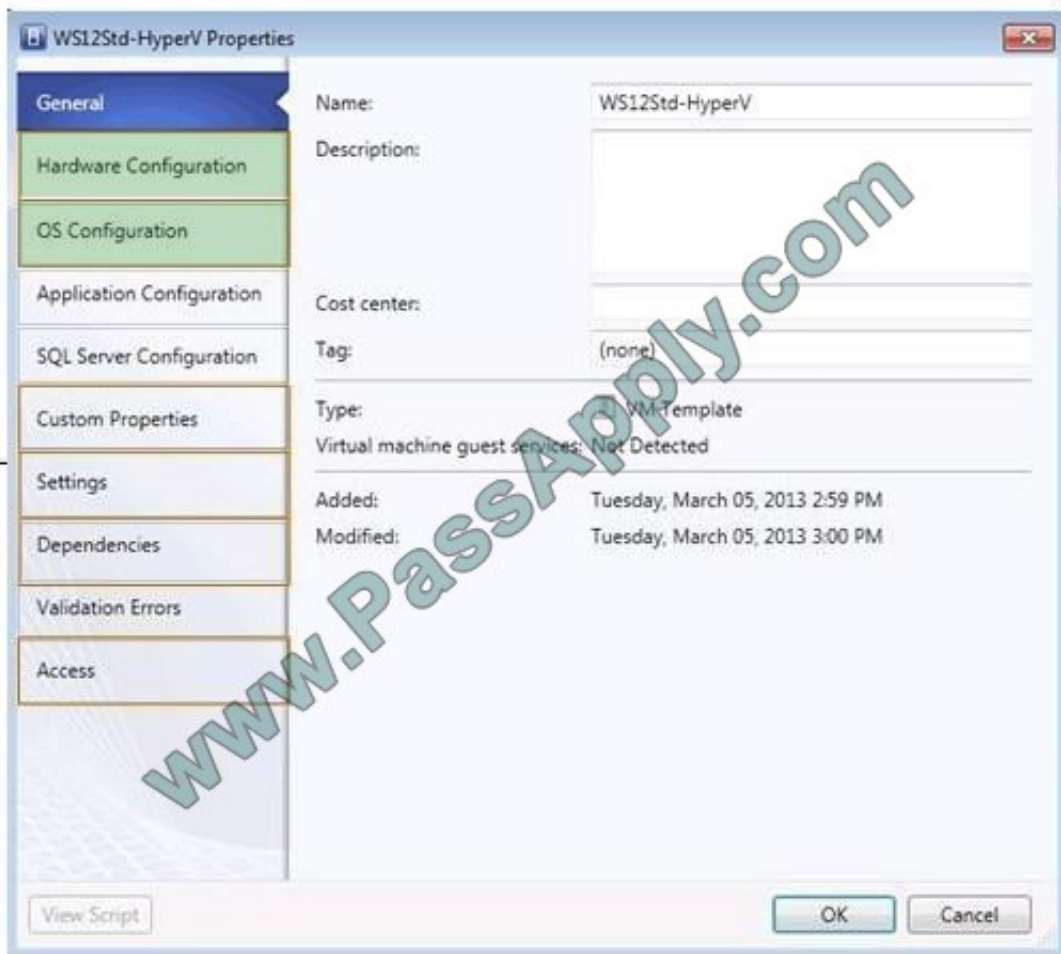
You must join the VMs to an Active Directory Domain Services domain at deployment.

You need to modify the VM template to support the requirements. On the properties page for the template, which two settings should you configure? To answer, select the appropriate settings in the answer area.

Hot Area:



Correct Answer:



Ref: <http://technet.microsoft.com/en-us/library/hh427282.aspx>

QUESTION 4

A company has a Windows Server 2012 R2 server that has the Hyper-V role installed. The server hosts 12 virtual machines (VMs) that run Windows Server 2012 R2. The company plans to deploy System Center 2012 R2 Data Protection

Manager (DPM). The company has identified the following requirements for the DPM deployment:

allow files and folders on VMs to be recovered

allow recovery of data to a network share

minimize the number of DPM protection agents that you must deploy

You need to implement the backup solution.

Which two actions should you perform? Each correct answer presents part of the solution.

A. Deploy a DPM server.

B. Deploy the DPM protection agent to VMs.



- C. Add the Hyper-V role to the DPM server.
- D. Configure DPM to perform guest-level backups of the VMs.
- E. Configure DPM to perform host-level backups of the VMs.

Correct Answer: AC

* DPM protection supports the following scenarios:

/ (this scenario) Protects virtual machines that are hosted on stand-alone servers that run Hyper-V and that use local or directly attached storage.

/ Protects virtual machines that run on a cluster. The cluster uses Cluster Shared Volumes (CSV) storage.

/Protects virtual machines that run on a stand-alone server or cluster and that use SMB 3.0 file server storage. /Protects virtual machines that are running during a live migration.

* Example: Protection for virtual machines on a stand-alone server that is running Hyper-V



This configuration protects one or more virtual machines on a stand-alone host computer. Storage can be local on the host server, or directly attached to it, for example a hard drive, a storage area network (SAN) device, or a network attached

storage (NAS) device. Alternatively, the host server might use SMB 3.0 storage on an alternate file server. The DPM protection agent must be installed on all hosts and on the file server if storage is hosted by using SMB 3.0.

Incorrect:

Not B: Would not minimize the number of Protection Agents.

Ref: <https://social.technet.microsoft.com/wiki/contents/articles/17493.protecting-hyper-v-virtual-machines-with-system-center-dpm-2012.aspx>

QUESTION 5

A company uses System Center 2012 R2 Virtual Machine Manager (VMM). You need to create and assign a self-service user role in VMM.

You have the following requirements:



All role members must share ownership of all virtual machines (VMs) that any role member creates.

Role members must be able to deploy VMs.

Role members must NOT have authoring rights.

Which three actions should you perform in sequence? To answer, move the appropriate actions from the list of actions to the answer area and arrange them in the correct order.

Select and Place:

www.PassApply.com

- Create a role and assign the local group to the user role.
- Create a local security group.
- Create a role and assign the Local Administrator action to the role members.
- Assign the Deploy (From template only) action to the role members.
- Create a role and assign the security group to the user role.
- Create an Active Directory Domain Services security group.

Correct Answer:

www.PassApply.com

- Create a role and assign the local group to the user role.
- Create a local security group.
- Create a role and assign the security group to the user role.
- Assign the Deploy (From template only) action to the role members.
- Create an Active Directory Domain Services security group.

Note:



*(box 1, box 2) If you want all role members to share ownership of all virtual machines that any member creates, create a security group in Active Directory and assign that group to the user role.

*(box 3) For a self-service user to deploy a virtual machine from a template, the following is required:

/The self-service user role must have the Deploy or Deploy (From template only) actions in their user role scope.

/ The template must be available to the self-service user role as an assigned resource, or the self-service user role must be granted access in the template properties.

QUESTION 6

A company plans to create a Hyper-V environment that will contain three virtual machines (VMs). A limited amount of storage space is available to host the VMs. The VMs will be configured as follows:

Virtual Machine Name	Operating System	Server Role
NYC-EX1	Windows Server 2012	Exchange Server 2013
NYC-DC1	Windows Server 2012	Active Directory Domain Services
NYC-SQL1	Windows Server 2008 R2	SQL Server 2008

You must maximize disk performance.

You need to recommend a storage solution.

Which type of virtual disk type should you configure for each VM?

- A. pass-through
- B. fixed
- C. dynamically expanding
- D. differencing

Correct Answer: B

Ref: <http://www.petri.co.il/choosing-hyper-v-storage-virtual-hard-disks-2.htm#>

Virtual Disk Types

There are considerations for using virtual disks, and what types of virtual disks are available:

?Fixed--The VHD image file is pre-allocated on the backing store for the maximum size requested. ?Expandable--Also known as "dynamically expanding", the VHD image file uses only as much space on the backing

store as needed to store the actual data the virtual disk currently contains. When creating this type of virtual disk, the VHD API does not test for free space on the physical disk based on the maximum size requested, therefore it is possible to

successfully create a dynamic virtual disk with a maximum size larger than the available physical disk free space.

Note The maximum size of a dynamic virtual disk is 2,040 GB. ?Differencing--A parent virtual disk is used as the basis



of this type, with any subsequent writes written to the virtual disk as differences to the new differencing VHD image file, and the parent VHD image file is not modified. For example, if you have a clean- install system boot operating system virtual disk as a parent and designate the differencing virtual disk as the current virtual disk for the system to use. then the

operating system on the parent virtual disk stays in its original state for quick recovery or for quickly creating more boot images based on additional differencing virtual disks.

Note The maximum size of a differencing virtual disk is 2,040 GB.

All virtual disk types have a minimum size of 3 MB.

With Pass-through disks, you lose all of the benefits of VHD files such as portability, snap- shooting and thin provisioning. Performance is marginally better than that of VHD files. Reference:
<http://clusteringformeremortals.com/2009/09/25/>

[hyper-v-pass-through-disk- performance-vs- fixedsize-vhd-files-and-dynamic-vhd-files-in-windows-server-2008-r2/](http://clusteringformeremortals.com/2009/09/25/hyper-v-pass-through-disk-performance-vs-fixedsize-vhd-files-and-dynamic-vhd-files-in-windows-server-2008-r2/)

QUESTION 7

A company has the following servers:

Server Name	Description
SERVER1	System Center 2012 R2 Virtual Machine Manager
SERVER2	Hyper-V Host Server
SERVER3	File Server

You are implementing the virtualization storage.

You need to assign Server Message Block (SMB) 3.0 file shares to the Hyper-V host servers. Which three actions should you perform? Each answer presents part of the solution.

- A. Assign the file share to SERVER2.
- B. Add SERVER3 as a storage device.
- C. Assign the file share to SERVER1.
- D. Add SERVER2 as a storage device.
- E. Create a file share on SERVER3.
- F. Create a file share on SERVER2.

Correct Answer: ABE

B: Step 1: Add the file server (server3) as a storage device. Add a storage device--As a first step, add a storage device or Windows-based file server to the VMM console.

E: Step 2: Create a file share on the file server (server3). Create a file share--Create a file share on the Windows-based file server.



A: Step 3: Assign the share to the Host server (Server2) Assign the share--Assign the share to a virtual machine host or cluster.

Ref: <http://technet.microsoft.com/en-us/library/jj614620.aspx>

QUESTION 8

An organization has a private cloud infrastructure. The organization uses Windows Server 2012 R2 servers that have the Hyper-V role installed. The organization uses all components of System Center 2012 R2.

You use Virtual Machine Manager to configure four clouds and self-service groups. In addition, you configure price sheets for chargeback reporting in Service Manager. You must implement chargeback for private cloud customers.

You need to ensure that chargeback reports in Service Manager will return data. Which three actions should you perform? Each correct answer presents part of the solution.

- A. In Service Manager, configure the Virtual Machine Manager Connector.
- B. Configure integration between Virtual Machine Manager and Operations Manager.
- C. Import a list of Hyper-V host servers into Service Manager by using the Import Instances from the CSV File tool.
- D. In Service Manager, configure the Operations Manager configuration item connector.
- E. In Service Manager, configure the Configuration Manager Connector.
- F. In Service Manager, configure the Orchestrator connector.

Correct Answer: BCD

D: Configure the SCOM (System Center Operations Manager) connector in Service Manager To get the Cloud objects we were seeing in Operations Manager into the CMDB in Service Manager, the Operations Manager connector in Service Manager needs to be configured.

To do this, follow these steps:

Open the Service Manager console as an Administrator.

Select "Administration" in the Wunderbar and expand "Administration and Connectors." In the action menu, select: Create Connector > Operations Manager CI Connector Etc.

B: Configuring Virtual Machine Manager (VMM) for Chargeback

In Virtual Machine Manager the following configuration need to take place:

/ Create one or more Clouds / Provision or assign VMs to the Clouds / (B) Configure integration between Virtual Machine Manager and Operations Manager / Verify that the right information is exchanged between Operations Manager and Virtual Machine Manager.

C: About Importing Data from Comma-Separated Files into Service Manager Configuration items contained in a comma-separated value (.csv) file can be imported into the Service Manager database by using the Import from CSV File feature.

This feature lets you to bulk-import instances of any class type or projection type that is defined in the Service Manager database. You can use this feature to:



?Create configuration item or work item instances from data stored in a tabular format.

?Bulk-edit existing database instances.

?Populate the Service Manager database by using data exported from an external database. ?Circumvent data entry through forms when many class instances must be created at the same time.

QUESTION 9

Name	Role	Operating System
VMM01	System Center 2012 R2 Virtual Machine Manager	Windows Server 2012 R2
Lib01	Library Server	Windows Server 2012 R2
Server01	No Role Installed	Windows Server 2012 R2

You have an environment that contains the servers as shown in the following table:

You purchase a physical server that supports out-of-band management to deploy as a bare-metal Hyper-V host server.

Administrators must be able to deploy standard Hyper-V host server images to bare-metal computers by using the least amount of administrative effort.

You need to prepare the environment.

What should you use? To answer, select the appropriate option from each drop-down menu in the answer area.

Hot Area:

Server Name	Role, Feature, Tool or Profile
Server01	<input type="text"/> <ul style="list-style-type: none"> Web Server (IIS) server role System Preparation Tool (sysprep.exe) Network Load Balancing server feature Windows Deployment Services server role
Lib01	<input type="text"/> <ul style="list-style-type: none"> a host profile only a host profile and drivers a host profile and a generalized file that uses the VHDX file format a host profile, drivers, and a generalized file that uses the VHDX file format

Correct Answer:



Server Name	Role, Feature, Tool or Profile
Server01	<ul style="list-style-type: none"> Web Server (IIS) server role System Preparation Tool (sysprep.exe) Network Load Balancing server feature Windows Deployment Services server role
Lib01	<ul style="list-style-type: none"> a host profile only a host profile and drivers a host profile and a generalized file that uses the VHDX file format a host profile, drivers, and a generalized file that uses the VHDX file format

Ref: <http://technet.microsoft.com/en-us/library/gg610658.aspx>

QUESTION 10

You administer a Windows Server 2012 R2 server that has the Hyper-V role installed. The server hosts three virtual machines (VMs). One of the VMs is managed by a security engineer. The security engineer must capture traffic on another

VM that is running on the same server. You need to ensure that the security engineer can access the network traffic information from the target VM.

Which networking feature should you enable?

- A. port mirroring
- B. NIC teaming
- C. Protected network
- D. MAC address spoofing

Correct Answer: A

Ref: http://technet.microsoft.com/en-us/library/jj679878.aspx#bkmk_portmirror

Port Mirroring With Port Mirroring, traffic sent to or from a Hyper-V Virtual Switch port is copied and sent to a mirror port. There are a range of applications for port mirroring - an entire ecosystem of network visibility companies exist that have products designed to consume port mirror data for performance management, security analysis, and network diagnostics. With Hyper-V Virtual Switch port mirroring, you can select the switch ports that are monitored as well as the switch port that receives copies of all the traffic.

The following examples configure port mirroring so that all traffic that is sent and received by both MyVM and MyVM2 is also sent to the VM named MonitorVM.



```
Set-VMNetworkAdapter -VMName MyVM -PortMirroring Source  
Set-VMNetworkAdapter -VMName MyVM2 -PortMirroring Source  
Set-VMNetworkAdapter -VMName MonitorVM -PortMirroring Destination
```

QUESTION 11

You have a Windows Server 2012 R2 server that has the Hyper-V role installed. The company has the following requirements for the Hyper-V host server: Virtual machines (VMs) must only communicate with other VMs. You must be able to monitor all TCP/IP packets to and from VMs from the moment that VMs are able to communicate. You must support a third-party program that uses the Network Driver Interface Specification (NDIS) API to monitor the TCP/IP packets between VMs.

You need to configure the environment.

Which three actions should you perform in sequence? To answer, move the appropriate actions from the list of actions to the answer area and arrange them in the correct order.

Select and Place:

- Disable the Microsoft Windows Filtering Platform switch extension.
- Configure the VMs to use the interna virtual switch.
- Create an internal virtual switch.
- Create a private virtual switch.
- Configure the VMs to use the private virtual switch.
- Enable the Microsoft NDIS Capture switch extension on the private virtual switch.

Correct Answer:



Note: Hyper-V Extensible Switch The Hyper-V extensible switch supports an interface that allows instances of NDIS filter drivers (known as extensible switch extensions) to bind within the extensible switch driver stack. After they are bound and enabled, extensions can monitor, modify, and forward packets to extensible switch ports. This also allows extensions to reject, redirect, or originate packets to ports that are used by the Hyper-V partitions. Ref: <http://technet.microsoft.com/en-us/library/hh831823.aspx>

QUESTION 12

You are the virtualization administrator for an organization that manages private and public cloud-based resources. The organization uses Windows Server 2008 R2 SP1 Hyper-V. All Hyper-V host servers are configured as nodes in a four-node cluster. The organization also uses System Center 2012 R2.

Operating system updates to each host server require a system reboot. You need to ensure that the virtual machines remain online during any reboots required by the updates. What should you do?

- A. Apply updates by using the Virtual Machine Servicing Tool (VMST).
- B. Configure orchestrated updates of Hyper-V host clusters in System Center 2012 R2 Virtual Machine Manager (VMM).
- C. Implement cluster-aware updating with the Cluster-Aware Updating (CAU) wizard.
- D. In System Center 2012 R2 Configuration Manager, add all of the servers to a collection. Deploy updates to the collection.

Correct Answer: C

<http://technet.microsoft.com/en-us/library/hh831694.aspx>

CAU is an automated feature that enables you to update clustered servers with little or no loss of availability during the update process. During an Updating Run, CAU transparently performs the following tasks:

- ?Puts each node of the cluster into node maintenance mode
- ?Moves the clustered roles off the node



?Installs the updates and any dependent updates

?Performs a restart if necessary

?Brings the node out of maintenance mode

?Restores the clustered roles on the node

?Moves to update the next node

For many clustered roles (formerly called clustered applications and services) in the cluster, the automatic update process triggers a planned failover, and it can cause a transient service interruption for connected clients. However, in the case

of continuously available workloads such as Hyper-V with live migration or file server with SMB Transparent Failover, CAU can coordinate cluster updates with no impact to the service availability.

Note

The CAU feature is only compatible with Windows Server 2012 R2 and Windows Server 2012 failover clusters and the clustered roles that are supported on those versions.

[74-409 PDF Dumps](#)

[74-409 Study Guide](#)

[74-409 Brindumps](#)



To Read the [Whole Q&As](#), please purchase the [Complete Version](#) from [Our website](#).

Try our product !

100% Guaranteed Success
100% Money Back Guarantee
365 Days Free Update
Instant Download After Purchase
24x7 Customer Support
Average 99.9% Success Rate
More than 800,000 Satisfied Customers Worldwide
Multi-Platform capabilities - [Windows](#), [Mac](#), [Android](#), [iPhone](#), [iPod](#), [iPad](#), [Kindle](#)

We provide exam PDF and VCE of Cisco, Microsoft, IBM, CompTIA, Oracle and other IT Certifications. You can view Vendor list of All Certification Exams offered:

<https://www.passapply.com/allproducts>

Need Help

Please provide as much detail as possible so we can best assist you.
To update a previously submitted ticket:



 <p>One Year Free Update Free update is available within One Year after your purchase. After One Year, you will get 50% discounts for updating. And we are proud to boast a 24/7 efficient Customer Support system via Email.</p>	 <p>Money Back Guarantee To ensure that you are spending on quality products, we provide 100% money back guarantee for 30 days from the date of purchase.</p>	 <p>Security & Privacy We respect customer privacy. We use McAfee's security service to provide you with utmost security for your personal information & peace of mind.</p>
---	---	--

Any charges made through this site will appear as Global Simulators Limited.
All trademarks are the property of their respective owners.
Copyright © passapply, All Rights Reserved.