



# 70-982<sup>Q&As</sup>

Recertification for MCSE: Desktop Infrastructure

## Pass Microsoft 70-982 Exam with 100% Guarantee

Free Download Real Questions & Answers **PDF** and **VCE** file from:

<https://www.passapply.com/70-982.html>

100% Passing Guarantee  
100% Money Back Assurance

Following Questions and Answers are all new published by Microsoft  
Official Exam Center

-  **Instant Download** After Purchase
-  **100% Money Back** Guarantee
-  **365 Days** Free Update
-  **800,000+** Satisfied Customers





### QUESTION 1

Your network contains a main datacenter and a disaster recovery datacenter. The main datacenter contains a Virtual Desktop Infrastructure (VDI). The Hyper-V hosts run on a failover cluster.

The virtual desktop infrastructure contains 50 personal virtual desktops that have custom settings.

In the disaster recovery datacenter, you implement a Hyper-V failover cluster.

You plan to implement a business continuity solution for the 50 personal virtual desktops.

The virtual desktops must meet the following requirements:

Replicate to the Hyper-V cluster in the disaster recovery datacenter.

Connect to the local network resources in the disaster recovery datacenter if a failover occurs.

Use application-consistent replicas.

You need to identify what must be implemented to meet the requirements of the planned deployment.

What should you identify?

To answer, drag the appropriate task to the correct requirement in the answer area. Each task may be used once, more than once, or not at all. Additionally, you may need to drag the split bar between panes or scroll to view content.

Select and Place:

Tasks	Answer Area
Add a virtual SAN adapter.	Replicate to the Hyper-V cluster in the disaster recovery datacenter. <span>Task</span>
Implement Recovery History.	Connect to the local network resources in the disaster recovery datacenter if a failover occurs. <span>Task</span>
Modify the Failover TCP/IP Settings.	Use application-consistent replicas. <span>Task</span>
Implement the Hyper-V Replica Broker role.	

Correct Answer:



Tasks	Answer Area
Add a virtual SAN adapter.	Replicate to the Hyper-V cluster in the disaster recovery datacenter.
	Connect to the local network resources in the disaster recovery datacenter if a failover occurs.
	Use application-consistent replicas.
	Implement the Hyper-V Replica Broker role.
	Modify the Failover TCP/IP Settings.
	Implement Recovery History.

### QUESTION 2

Your network contains an Active Directory domain named contoso.com. The domain contains a server named Server1. A network technician installs the Remote Desktop Session Host role service on Server1.

The technician cannot manage Remote Desktop Services (RDS) by using Server Manager. You need to ensure that you can manage RDS by using Server Manager on Server1.

What should you do first?

- A. Install the Remote Desktop Connection Broker role service.
- B. Run an RDS scenario-based installation.
- C. Add Server1 to the RDS Management Servers group.
- D. Install the Remote Desktop Services Tools feature-

Correct Answer: B

### QUESTION 3

You need to ensure that the line-of-business applications run successfully for the sales users. The solution must meet the sales department requirements. What should you do?

- A. On the RD Virtualization Host servers, install the Quality Windows Audio Video Experience feature.
- B. On the RD Connection Broker servers, modify the deployment properties.
- C. On the RD Virtualization Host servers, modify the Hyper-V settings.
- D. On the RD Connection Broker servers, modify the properties of the virtual desktop collection.

Correct Answer: C

The line-of-business applications must be installed on the virtual desktops only. The line-ofbusiness applications require hardware acceleration to run.



1.

Open Hyper-V Manager. Click Start, point to Administrative Tools, and then click Hyper-V Manager.

2.

In the Results pane, under Virtual Machines, select the virtual machine that you want to configure. The virtual machine must be off in order to modify its settings.

3.

In the Action pane, under the virtual machine name, click Settings. Then, in the navigation pane, click RemoteFX 3D Video Adapter.

4.

On the RemoteFX 3D Video Adapter page, specify the number of monitors and resolutions, and then click OK.

When you are using the virtual 3D video adapter, you will not be able to use the Virtual Machine Connection.

Use Remote Desktop instead. If you need to use Virtual Machine Connection, you must remove the virtual 3D video card from the virtual machine.

---

#### QUESTION 4

Your network contains an Active Directory domain named contoso.com. The domain has Microsoft System Center 2012 Configuration Manager deployed.

You plan to implement Asset Intelligence reports by using Configuration Manager.

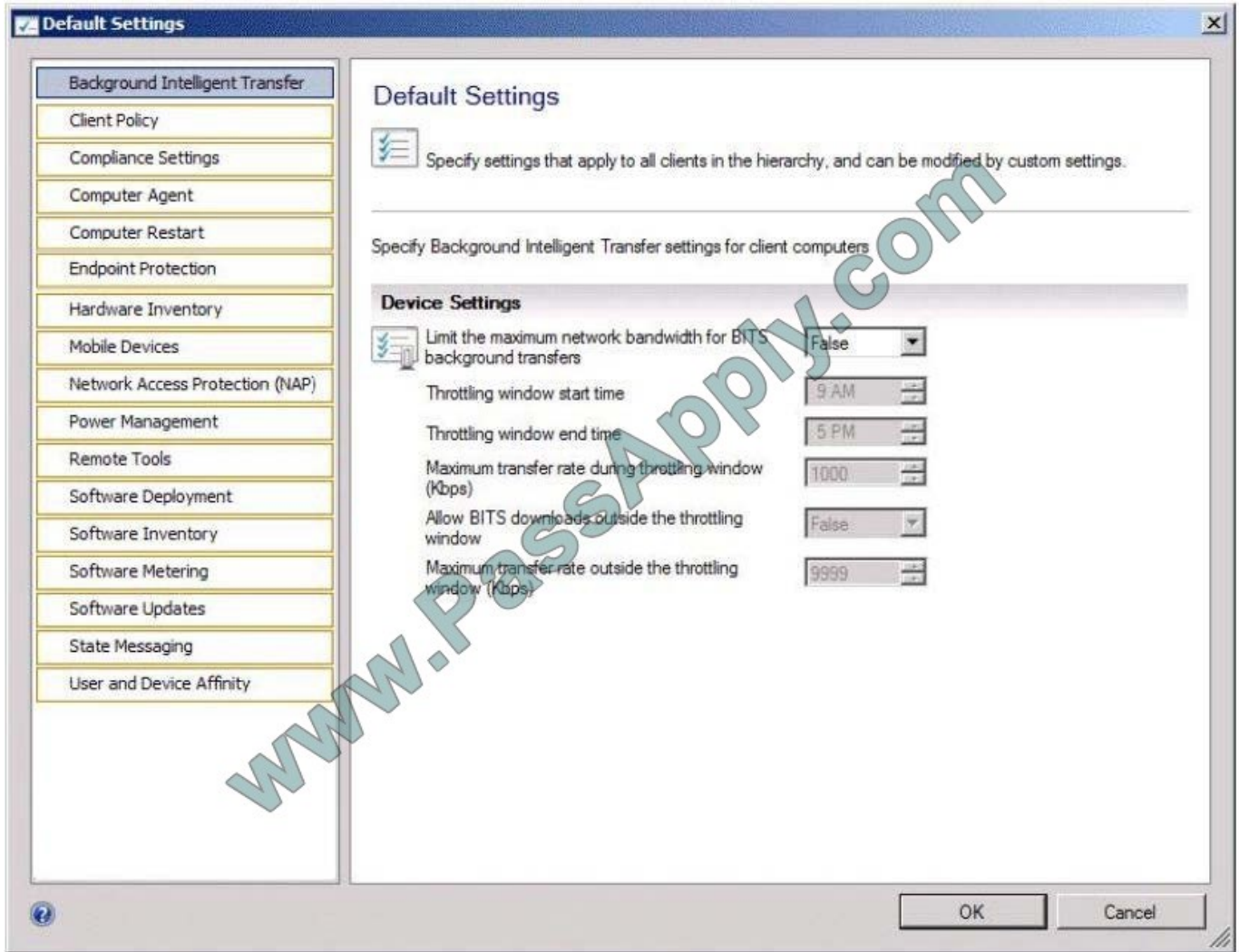
You discover that the inventory data required for the Asset Intelligence reports is missing.

You need to configure Configuration Manager to collect the inventory data required for the Asset Intelligence reports.

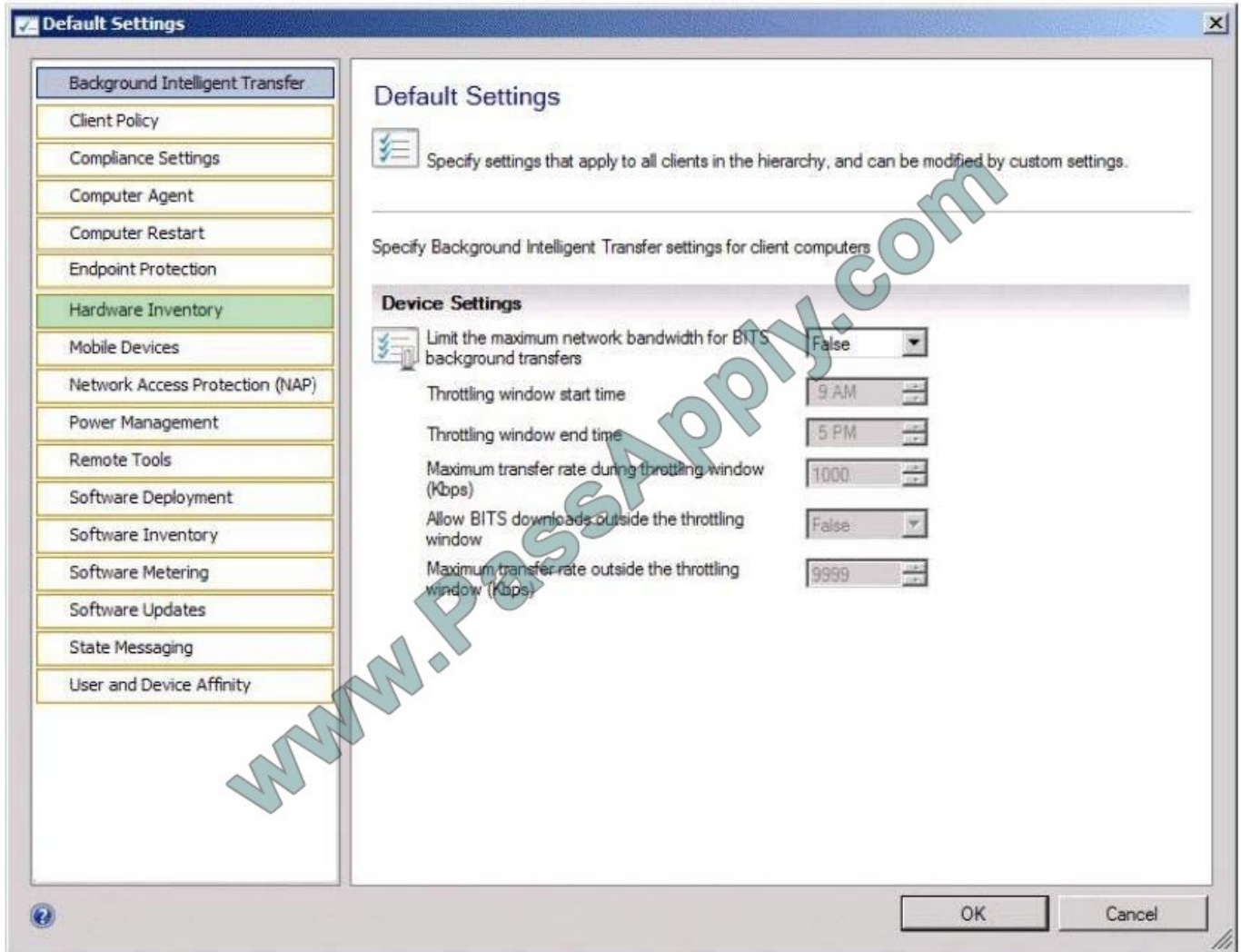
What should you enable in the default settings of the client agent?

To answer, select the appropriate setting in the answer area.

Hot Area:



Correct Answer:



### QUESTION 5

Your network contains two Remote Desktop Services (RDS) session collections named Collection 1 and Collection2.

Each user has a laptop computer that runs Windows 8.

The users frequently log on to sessions in Collection1 and Collection2.

You need to recommend a user state virtualization solution to meet the following requirements:

Ensure that the user profiles remain the same when the users log on to their laptop computer and virtual desktop.

Minimize the time required to log on. What should you implement?

- A.  
Folder Redirection and user profile disks
- B.





User profiles for Remote Desktop Services (RDS) and roaming profiles

C.

User profiles for Remote Desktop Services (RDS) and Folder Redirection

D.

Roaming profiles and Folder Redirection

Correct Answer: D

Roaming User Profiles redirects user profiles to a file share so that users receive the same operating system and application settings on multiple computers. When a user signs in to a computer by using an account that is set up with a file share as the profile path, the user's profile is downloaded to the local computer and merged with the local profile (if present). When the user signs out of the computer, the local copy of their profile, including any changes, is merged with the server copy of the profile. Roaming User Profiles is typically enabled on domain accounts by a network administrator. Folder Redirection enables users and administrators to redirect the path of a known folder to a new location, manually or by using Group Policy. The new location can be a folder on the local computer or a directory on a file share. Users interact with files in the redirected folder as if it still existed on the local drive. For example, you can redirect the Documents folder, which is usually stored on a local drive, to a network location. The files in the folder are then available to the user from any computer on the network.



**Considerations and Trade-Off Summary**

	Central management of user data and settings	Performance	Application compatibility
<b>User data management method</b>			
Local user profiles	Not suitable for RDS farm scenarios	Faster logon experience	Does not introduce app compatibility issues
Roaming user profiles	-User data and settings backed up centrally  -Recommended in RDS farm scenarios	Roaming profile downloaded over network, can slow down logon/logoff	Applications may bloat profile size
Mandatory profiles	-Changes to users settings not preserved since a standard profile is applied  -Can be useful in locked-down environments	Standard profile size ensures consistent logon performance	Does not introduce app compatibility issues
Folder redirection	-User data backed up centrally (but not registry)  -Used in combination with different profile types	Can help improve logon speed when roaming profiles are deployed by reducing the size of roaming profile	Redirection of AppData folder may cause application compatibility issues – details in step 5 below

**QUESTION 6**

Your network contains an Active Directory domain named contoso.com. The domain contains a Windows Server Update Services (WSUS) server.

The domain has Microsoft System Center 2012 Configuration Manager and Microsoft System Center 2012 Virtual Machine Manager (VMM) deployed.

Users in the finance department connect to a managed pooled virtual desktop collection. You need to recommend a strategy to apply operating system updates to the virtual desktops used by the finance users.

What should you recommend?

More than one answer choice may achieve the goal. Select the BEST answer.





- A. Manually update a base image and recreate the collection.
- B. From Configuration Manager, configure software updates.
- C. Configure an intranet Microsoft update service location by using Group Policy.
- D. From VMM, perform Update Remediation.

Correct Answer: A

#### Configuring Software Updates in Configuration Manager

Software update point-based installation

- Can use your existing software updates infrastructure to manage the client software.
- Can automatically install the client software on new computers if Windows Server Update Services (WSUS) and Group Policy settings in Active Directory Domain Services are configured correctly.
- Does not require computers to be discovered before the client can be installed.
- Computers can read client installation properties that have been published to Active Directory Domain Services.
- Will reinstall the client software if it is removed.
- Does not require you to configure and maintain an installation account for the intended client computer.

#### QUESTION 7

Your network contains an Active Directory domain named contoso.com. The domain has Microsoft System Center 2012 Configuration Manager deployed.

All client computers run Windows XP.

Your company plans to replace all of the client computers with new computers that run Windows 8.

You need to recommend which Configuration Manager system role must be deployed to capture the local application data from the Windows XP computers, and then deploy the local application data to the Windows 8 computers.

Which system role should you recommend?

To answer, select the appropriate system role in the answer area.

Hot Area:



Correct Answer:



The state migration point is a Configuration Manager 2007 site role that provides a location to store user state information before an operating system deployment. You can store the user state on the state migration point while the operating system deployment proceeds and then restore the user state to the new computer from the state migration point. Each state migration point site server can only be a member of one Configuration Manager 2007 site. The state migration point requires Internet Information Services (IIS).

### QUESTION 8

Your network contains a Virtual Desktop Infrastructure (VDI). The VDI contains four servers. The servers are configured as shown in the following table.

Server name	Role service
Server1	Remote Desktop Virtualization Host
Server2	Remote Desktop Web Access
Server3	Remote Desktop Gateway
Server4	Remote Desktop Connection Broker

You create a virtual desktop collection. The virtual desktop collection supports 100 users.

You need to identify how much processor time each virtual machine consumes.



Which performance object should you monitor on Server1?

- A. Hyper-V Hypervisor Virtual Processor
- B. Terminal Services Session
- C. Processor
- D. Hyper-V Hypervisor Logical Processor

Correct Answer: A

For a Hyper-V virtual machine, you cannot view the traditional % Processor Time metric to get a good understanding of that VM's processing. Instead, the counter you'll want to monitor is Hyper-V Hypervisor Virtual Processor \ % Guest Run

Time (instanceName). This counter can be considered to be equivalent to % Processor Time, but for a specific VM as defined by its instance name.

While similar in name, this counter is different than Hyper-V Hypervisor Logical Processor. Whereas Hyper-V considers a "Virtual Processor" to be one that has been assigned as part of a VM's configuration, a "Logical Processor" represents

the total number of processors on a host system that are managed by Hyper-V. You get this number by multiplying the number of cores times sockets, doubling the result if hyperthreading is enabled.

### QUESTION 9

Your network contains an Active Directory domain named contoso.com. The domain contains five servers. The servers are configured as shown in the following table.

Server name	Configuration
Server1	Remote Desktop Session Host (RD Session Host)
Server2	Remote Desktop Connection Broker (RD Connection Broker)
Server3	Remote Desktop Web Access (RD Web Access)
Server4	Microsoft: Application Virtualization (App-V) publishing server
Server5	Microsoft: Application Virtualization (App-V) management server

Servers Microsoft Application Virtualization (App-V) management server

You plan to deploy three App-V applications named App1, App2, and App3 by using RemoteApp publishing. Users will access App1, App2, and App3 from the RD Web Access site.

You need to ensure that the users can run App1, App2, and App3 by clicking links to the applications from the RD Web Access site.

On which server should you install the App-V client?



- A. Server1
- B. Server2
- C. Server3
- D. Server4
- E. Server5

Correct Answer: A

---

#### QUESTION 10

You are evaluating the implementation of virtual desktops on non-clustered servers.

You need to recommend which RDS collection type must be used to provision the virtual desktops for the sales users. The solution must meet the sales department requirements.

Which type of collection should you recommend?

- A. An unmanaged pooled virtual desktop collection.
- B. An unmanaged personal virtual desktop collection.
- C. A managed pooled virtual desktop collection.
- D. A managed personal virtual desktop collection.

Correct Answer: C

---

#### QUESTION 11

You need to implement an RDS infrastructure to meet the technical requirements. What should you do first?

- A. Install Microsoft SQL Server 2008 R2.
- B. Install the Failover Clustering feature.
- C. Install the Windows Internal Database feature.
- D. Install the Network Load Balancing (NLB) feature.

Correct Answer: D

---

#### QUESTION 12



Your network contains an Active Directory domain named contcsc.com. The domain contains a server named Gateway1 that has the Remote Desktop Gateway role service installed.

You need to ensure that all of the users who connect to the Remote Desktop Session Host (RD Session Host) servers by using Gateway1 receive a custom logon message. The solution must prevent the message from appearing when the users connect to the RD Session Host servers directly.

What should you configure from Remote Desktop Gateway Manager?

- A. The RD Gateway-managed computer groups
- B. The properties of Gateway1
- C. The Remote Desktop resource authorization policies (RD RAPs)
- D. The Remote Desktop connection authorization policies (RD CAPs)

Correct Answer: B

[Latest 70-982 Dumps](#)

[70-982 VCE Dumps](#)

[70-982 Exam Questions](#)





To Read the [Whole Q&As](#), please purchase the [Complete Version](#) from [Our website](#).

## Try our product !

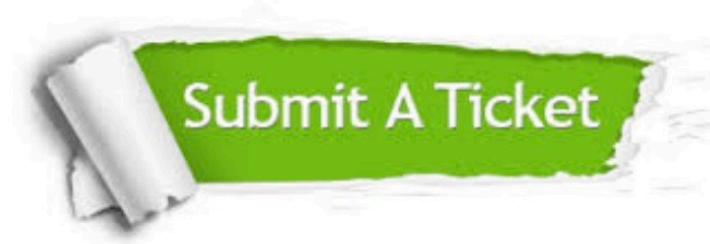
100% Guaranteed Success  
100% Money Back Guarantee  
365 Days Free Update  
Instant Download After Purchase  
24x7 Customer Support  
Average 99.9% Success Rate  
More than 800,000 Satisfied Customers Worldwide  
Multi-Platform capabilities - [Windows](#), [Mac](#), [Android](#), [iPhone](#), [iPod](#), [iPad](#), [Kindle](#)

We provide exam PDF and VCE of Cisco, Microsoft, IBM, CompTIA, Oracle and other IT Certifications. You can view Vendor list of All Certification Exams offered:

<https://www.passapply.com/allproducts>

## Need Help

Please provide as much detail as possible so we can best assist you.  
To update a previously submitted ticket:



 <p><b>One Year Free Update</b> Free update is available within One Year after your purchase. After One Year, you will get 50% discounts for updating. And we are proud to boast a 24/7 efficient Customer Support system via Email.</p>	 <p><b>Money Back Guarantee</b> To ensure that you are spending on quality products, we provide 100% money back guarantee for 30 days from the date of purchase.</p>	 <p><b>Security &amp; Privacy</b> We respect customer privacy. We use McAfee's security service to provide you with utmost security for your personal information &amp; peace of mind.</p>
---	---	--

Any charges made through this site will appear as Global Simulators Limited.  
All trademarks are the property of their respective owners.  
Copyright © passapply, All Rights Reserved.