



70-981^{Q&As}

Recertification for MCSE: Private Cloud

Pass Microsoft 70-981 Exam with 100% Guarantee

Free Download Real Questions & Answers **PDF** and **VCE** file from:

<https://www.passapply.com/70-981.html>

100% Passing Guarantee
100% Money Back Assurance

Following Questions and Answers are all new published by Microsoft
Official Exam Center

-  **Instant Download** After Purchase
-  **100% Money Back** Guarantee
-  **365 Days** Free Update
-  **800,000+** Satisfied Customers





QUESTION 1

Your company has a private cloud that is managed by using a System Center 2012 infrastructure.

You deploy an application visualization solution.

You deploy a server named Server1, and then you install the Remote Desktop Services server role.

Server1 is monitored by using Operations Manager.

You deploy a virtualized application named App1 to Server1.

You need to set the state of Server1 to critical if CPU utilization by App1 exceeds 80 percent for five minutes.

What should you create?

- A. a rule
- B. a monitor
- C. a service level objective (SLO)
- D. an event subscription
- E. a synthetic transaction

Correct Answer: B

"You need to set the state of Server1 to critical if CPU utilization by App1 exceeds 80 percent for five minutes."

SLOs don't change the state of an object, monitors do:

Create a monitor if...

You want to affect the health of an object. In addition to generating an alert, a monitor will affect the health state of its target object. This is displayed in state views and availability reports.

Reference: Monitors and Rules

<http://technet.microsoft.com/en-us/library/hh457603.aspx>

QUESTION 2

You use System Center 2012 R2 Virtual Machine Manager (VMM) to manage the virtualization infrastructure. You deploy a service named Service1. Service1 has two tiers.

Each tier contains one upgrade domain and multiple virtual machines. You plan to update Service1.

You need to identify which changes can be applied to Service 1 without requiring downtime and which updates require downtime.

What should you identify? To answer, select the appropriate options in the answer area.



Hot Area:

Answer Area

Increase the number of upgrade domains in a tier:

Requires downtime	<input type="checkbox"/>
Does not require downtime	<input type="checkbox"/>

Change the generation of the virtual machines in a tier:

Requires downtime	<input type="checkbox"/>
Does not require downtime	<input type="checkbox"/>

Change the size of a disk for the virtual machines in a tier:

Requires downtime	<input type="checkbox"/>
Does not require downtime	<input type="checkbox"/>

Remove a network adapter from the virtual machines in a tier:

Requires downtime	<input type="checkbox"/>
Does not require downtime	<input type="checkbox"/>

Correct Answer:

Answer Area

Increase the number of upgrade domains in a tier:

Requires downtime	<input checked="" type="checkbox"/>
Does not require downtime	<input type="checkbox"/>

Change the generation of the virtual machines in a tier:

Requires downtime	<input checked="" type="checkbox"/>
Does not require downtime	<input type="checkbox"/>

Change the size of a disk for the virtual machines in a tier:

Requires downtime	<input checked="" type="checkbox"/>
Does not require downtime	<input type="checkbox"/>

Remove a network adapter from the virtual machines in a tier:

Requires downtime	<input checked="" type="checkbox"/>
Does not require downtime	<input type="checkbox"/>

QUESTION 3

You have a System Center 2012 Virtual Machine Manager (VMM) infrastructure.

You plan to create profiles.

You need to identify which settings can be applied to each profile type.



Which settings should you identify?

To answer, drag the appropriate setting or settings to the correct profile type or profile types in the answer area, (Each setting may be used once, more than once, or not at all.)

Select and Place:

Configurations	Answer Area			
	Application Profile	Guest OS Profile	Hardware Profile	Host Profile
Number of processors	Configuration	Configuration	Configuration	Configuration
OS compatibility				
Product key				

Correct Answer:

Configurations	Answer Area			
	Application Profile	Guest OS Profile	Hardware Profile	Host Profile
Number of processors			Number of processors	
OS compatibility	OS compatibility			
Product key		Product key		Product key

QUESTION 4

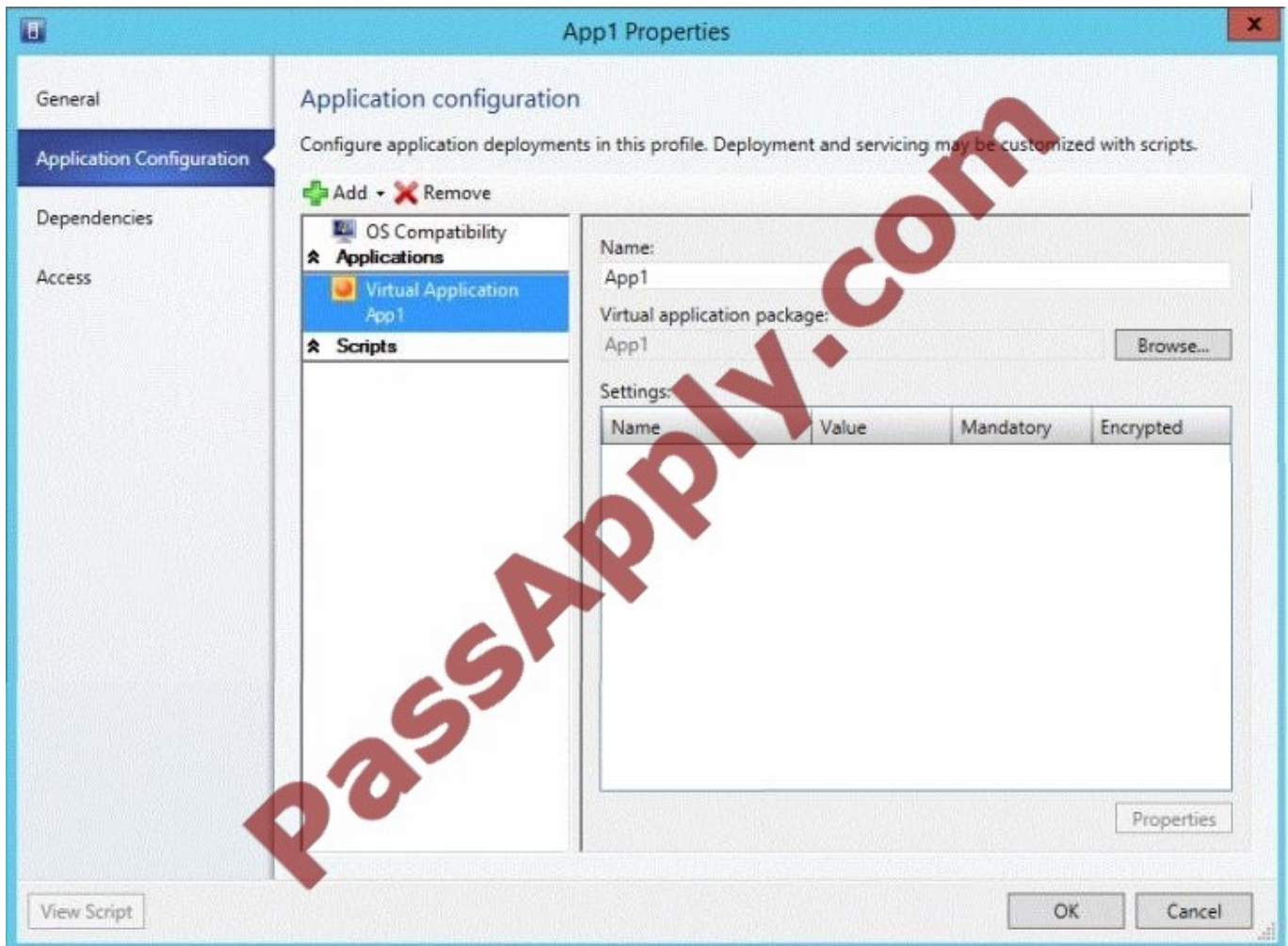
Your company deploys System Center 2012 R2 Virtual Machine Manager (VMM).

You plan to perform a new server deployment. The new server deployment will include a custom application named App1.

You use Server Application Virtualization (Server App-V) to virtualize App1. You create an application profile.

You create a service deployment to deploy the App1 by using a Windows Server 2012 R2 template.

After deploying the service, you discover that App1 was not installed. You view the application profile as shown in the exhibit. (Click the Exhibit button.)



You need to ensure that App1 is installed when you deploy the service.

What should you add to the application profile?

- A. A Script Application that adds the Server App-V Agent
- B. A Script Application that adds the WebDeploy Agent
- C. A Script to Application that installs the Server App-V Agent
- D. A Script to Application that installs the WebDeploy Agent

Correct Answer: A

You use Server Application Virtualization (Server App-V) to virtualize App1" (App-V application package, not a Web Deploy application package)

Please see the following page for more information on why I think the answer is A. Here is the specific quote from that page- "In VMM in System Center 2012 R2, if you kept the Compatibility option (described in the previous step) set to the default option, General, you can add an application that will be deployed by running a script, such as a script based on a Setup.exe installation program. To add such an application, select Script Application."

<http://technet.microsoft.com/en-us/library/hh427291.aspx> Also, in the PetShop example, the application you are deploying is specifically mentioned to be a web deploy application



6. Configure Applications: The application profile for the web tier will contain:

1.

Pre-install application profile script to install the Web Deploy client

2.

The web deploy application package

3.

Post-install application deployment script to configure the web deploy application <http://technet.microsoft.com/en-us/library/gg703293.aspx> - How to Install the Server Application Virtualization Agent Use one of the following ways to install the Server App-V Agent. After you install the Agent, you can review the SAVSetupChainerLog.txtfile for information about the installation process. Copy the Server App-V Agent installation files (Agentsetup.exe) to the computer that is running Windows Server where you want to install the Server App-V Agent. You must also use the correct version of the installation file that matches the architecture of the computer that you are installing on, x86 or x64.

To start the Microsoft Server Application Virtualization Agent setup wizard, double-click AgentSetup.exe.

On the Welcome page, click Next.

Script to Application is from Orchestrator:

http://blogs.technet.com/b/neilp/archive/2013/11/14/scvmm_5f00_servietemplate_5f00_sco_rch.aspx

Script Application is from VMM

<http://technet.microsoft.com/en-us/library/hh427291.aspx> And the exhibit shows a VMM screenshot (at least that is what I think it is). So I think it should be A

QUESTION 5

You need to recommend a solution to meet the technical requirements for identifying the Windows Server and SQL Server configuration issues. What should you include in the recommendation? (More than one answer choice may achieve the goal. Select the BEST answer.)

- A. Audit Collection Services (ACS)
- B. Windows Server Update Services (WSUS)
- C. Best Practices Analyzer (BPA)
- D. Microsoft System Center Advisor (SCA)

Correct Answer: D

QUESTION 6



You have a System Center 2012 Service Manager infrastructure that contains a Self-Service Portal.

You need to configure the Self-Service Portal to display a service offering that contains a request offering.

Which three actions should you perform before you publish the service offering? (To answer, move the appropriate actions from the list of actions to the answer area and arrange them in the correct

order.)

Select and Place:

Actions

- Create a change request.
- Create a service request template.
- Associate the service offering to the request offering.
- Create a service offering and a request offering.
- Associate the change request to the service request.
- Create a change request template.

Answer Area

Correct Answer:

Actions

- Create a change request.
- Associate the service offering to the request offering.
- Create a change request template.

Answer Area

- Create a service request template.
- Create a service offering and a request offering.
- Associate the change request to the service request.

QUESTION 7

You need to recommend a solution to meet the alerts requirement for the database administrators. What should you recommend?

- A. Install a cellular modem on TOR-OM1. Create a subscription and a notification channel.
- B. Install a cellular modem on TOR-CM1. Create a subscription and a notification channel.
- C. Install a cellular modem on TOR-OM1. Create a monitor and a subscriber.
- D. Install a cellular modem on TOR-CM1. Create a monitor and a subscriber.

Correct Answer: A



QUESTION 8

You need to identify which server or servers can be deployed as a Hyper-V host by using System Center 2012 -Virtual Machine Manager (VMM). Which server or servers should you identify? (Each correct answer presents part of the solution. Choose all that apply.)

- A. Server1
- B. Server2
- C. Server3
- D. Server4

Correct Answer: ACD

QUESTION 9

You need to prepare the environment to support the planned changes for App1.

In which order should you perform the actions? (To answer, move all of the actions from the list of actions to the answer area and arrange them in the correct order.)

Select and Place:

Actions	Answer Area
Create a virtual IP (VIP) template.	
Install the provider for the hardware load balancer.	
Copy and modify the App1 service template.	
Create an IP address pool.	
Add a hardware load balancer.	

Correct Answer:



Actions	Answer Area
	Create an IP address pool.
	Install the provider for the hardware load balancer.
	Add a hardware load balancer.
	Create a virtual IP (VIP) template.
	Copy and modify the App1 service template.

QUESTION 10

You install Microsoft .NET Framework 3.5.1 on Server7 and Server8.

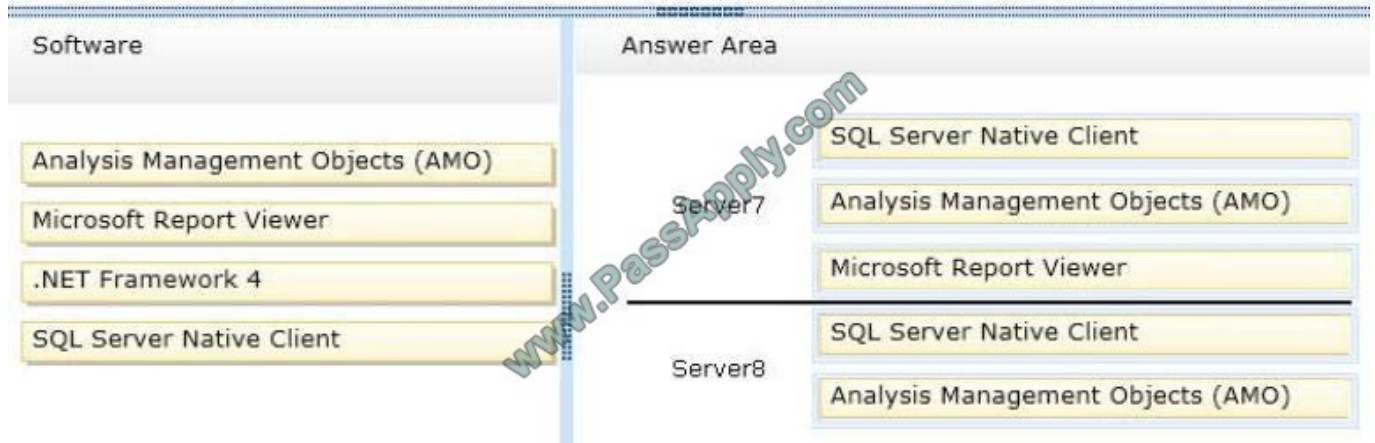
You need to implement the planned changes for Server7 and Server8.

Which prerequisites should you install on Server7 and Server8 first? (To answer, drag the appropriate software to the correct servers. Each software may be used once, more than once, or not at all. You may need to drag the split bar between panes or scroll to view content.)

Select and Place:

Software	Answer Area
Analysis Management Objects (AMO)	Server7: Software
Microsoft Report Viewer	Server7: Software
.NET Framework 4	Server7: Software
SQL Server Native Client	Server8: Software
	Server8: Software

Correct Answer:



QUESTION 11

Your company has a private cloud that is managed by using a System Center 2012 infrastructure. The network contains a Microsoft SharePoint Server 2010 server farm. The server farm is hosted on 20 virtual machines. You deploy a custom solution to the SharePoint server farm. The solution requires that a new Web.config file be deployed to all of the front-end servers. You need to identify which front-end servers have an outdated version of the Web.config file. What should you do?

- A. From Operations Manager, create a monitor.
- B. From Service Manager, create a Virtual Machine Manager (VMM) connector.
- C. From Virtual Machine Manager (VMM), deploy a service template.
- D. From Configuration Manager, deploy a Desired Configuration Management baseline.

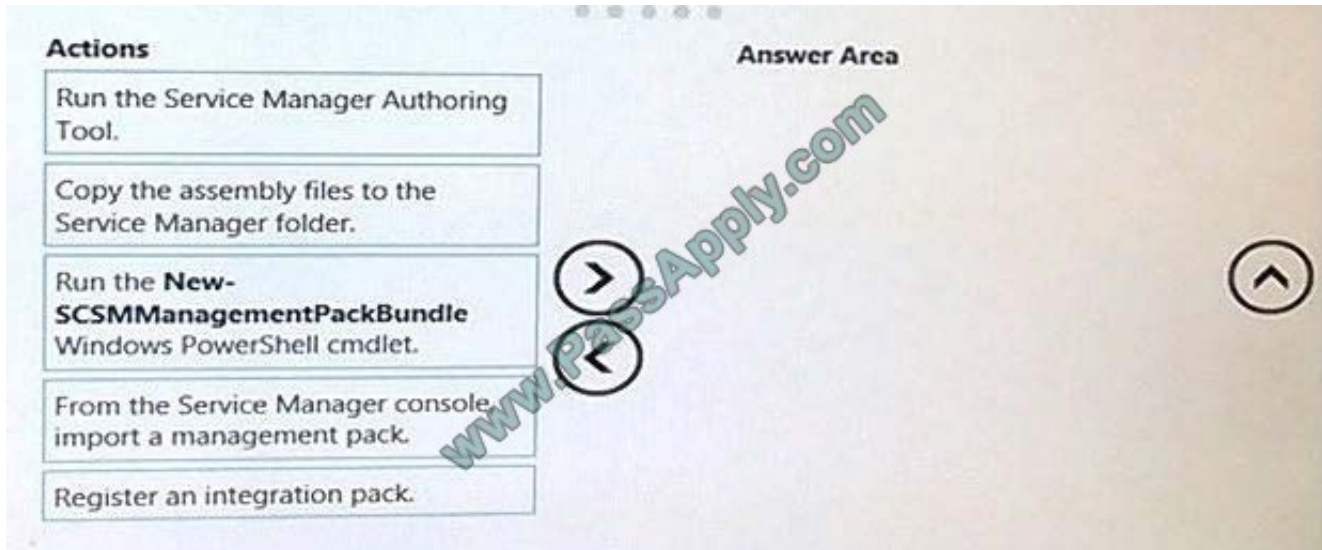
Correct Answer: D

QUESTION 12

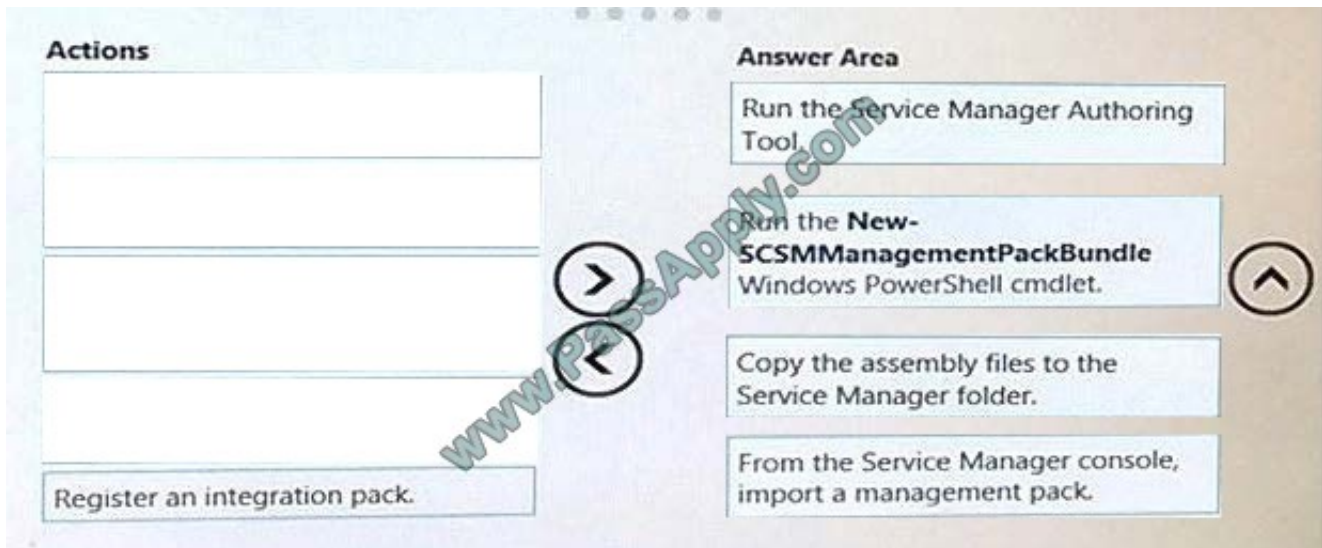
You need to implement Workflow1.

Which four actions should you perform on Server2 in sequence? To answer, move the appropriate actions from the list of actions to the answer area and arrange them in the correct order.

Select and Place:



Correct Answer:



[70-981 VCE Dumps](#)

[70-981 Practice Test](#)

[70-981 Brindumps](#)



To Read the [Whole Q&As](#), please purchase the [Complete Version](#) from [Our website](#).

Try our product !

100% Guaranteed Success
100% Money Back Guarantee
365 Days Free Update
Instant Download After Purchase
24x7 Customer Support
Average 99.9% Success Rate
More than 800,000 Satisfied Customers Worldwide
Multi-Platform capabilities - [Windows](#), [Mac](#), [Android](#), [iPhone](#), [iPod](#), [iPad](#), [Kindle](#)

We provide exam PDF and VCE of Cisco, Microsoft, IBM, CompTIA, Oracle and other IT Certifications. You can view Vendor list of All Certification Exams offered:

<https://www.passapply.com/allproducts>

Need Help

Please provide as much detail as possible so we can best assist you.
To update a previously submitted ticket:



 <p>One Year Free Update Free update is available within One Year after your purchase. After One Year, you will get 50% discounts for updating. And we are proud to boast a 24/7 efficient Customer Support system via Email.</p>	 <p>Money Back Guarantee To ensure that you are spending on quality products, we provide 100% money back guarantee for 30 days from the date of purchase.</p>	 <p>Security & Privacy We respect customer privacy. We use McAfee's security service to provide you with utmost security for your personal information & peace of mind.</p>
---------------------------------------------------------------------------------------------------------------------------------------------------------------------------------------------------------------------------------------------------------------------------------------------------------------------------------	-------------------------------------------------------------------------------------------------------------------------------------------------------------------------------------------------------------------------------------------------------------	------------------------------------------------------------------------------------------------------------------------------------------------------------------------------------------------------------------------------------------------------------------------------------

Any charges made through this site will appear as Global Simulators Limited.
All trademarks are the property of their respective owners.
Copyright © passapply, All Rights Reserved.