



70-767^{Q&As}

Implementing a Data Warehouse using SQL

Pass Microsoft 70-767 Exam with 100% Guarantee

Free Download Real Questions & Answers **PDF** and **VCE** file from:

<https://www.passapply.com/70-767.html>

100% Passing Guarantee
100% Money Back Assurance

Following Questions and Answers are all new published by Microsoft
Official Exam Center

-  **Instant Download** After Purchase
-  **100% Money Back** Guarantee
-  **365 Days** Free Update
-  **800,000+** Satisfied Customers





QUESTION 1

You are designing a SQL Server Integration Services (SSIS) package that uploads a file to a table named Orders in a SQL Azure database.

The company's auditing policies have the following requirements:

Correct Answer: C

Reference: <http://msdn.microsoft.com/en-us/library/ms140223.aspx>

QUESTION 2

Note: This question is part of a series of questions that present the same scenario. Each question in the series contains a unique solution that might meet the stated goals. Some question sets might have more than one correct solution, while

others might not have a correct solution.

After you answer a question in this sections, you will NOT be able to return to it. As a result, these questions will not appear in the review screen.

You have a Microsoft Azure SQL Data Warehouse instance that must be available six months a day for reporting.

You need to pause the compute resources when the instance is not being used.

Solution: You use the Azure portal.

Does the solution meet the goal?

A. Yes

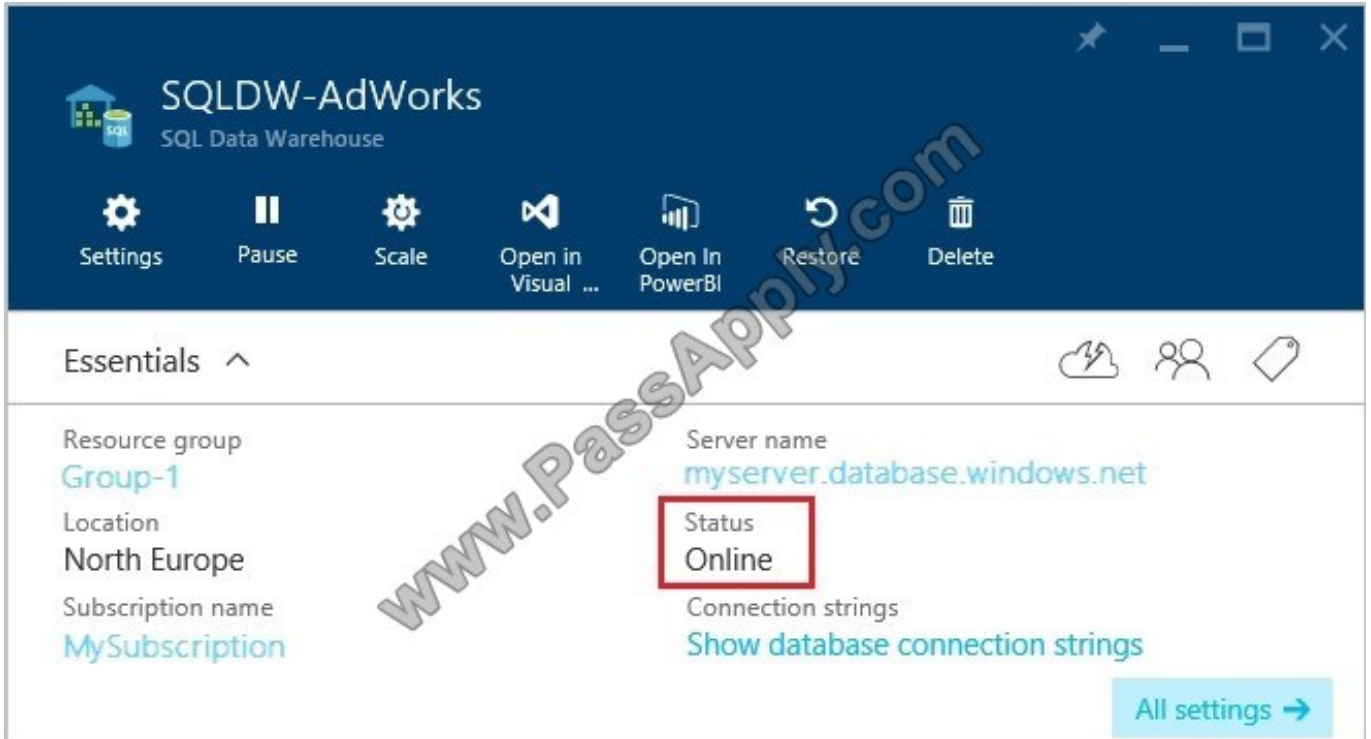
B. No

Correct Answer: A

To pause a SQL Data Warehouse database, use any of these individual methods. Pause compute with Azure portal
Pause compute with PowerShell
Pause compute with REST APIs

Note: To pause a database:

1.
Open the Azure portal and open your database. Notice that the Status is Online.
2.
To suspend compute and memory resources, click Pause, and then a confirmation message appears. Click yes to confirm or no to cancel.



References: <https://docs.microsoft.com/en-us/azure/sql-data-warehouse/sql-data-warehouse-manage-compute-overview> <https://docs.microsoft.com/en-us/azure/sql-data-warehouse/sql-data-warehouse-manage-compute-portal#pause-compute-bk>

QUESTION 3

You administer a Microsoft SQL Server 2016 server that has SQL Server Integration Services (SSIS) installed.

You plan to deploy new SSIS packages to the server. The SSIS packages use the Project Deployment Model together with parameters and Integration Services environment variables.

You need to configure the SQL Server environment to support these packages.

What should you do?

- A. Create SSIS configuration files for the packages.
- B. Create an Integration Services catalog.
- C. Install Data Quality Services.
- D. Install Master Data services.

Correct Answer: B

Reference: <http://msdn.microsoft.com/en-us/library/hh479588.aspx> <http://msdn.microsoft.com/en-us/library/hh213290.aspx> <http://msdn.microsoft.com/en-us/library/hh213373.aspx>



QUESTION 4

You are creating a SQL Server Integration Services (SSIS) package that implements a Type 3 Slowly Changing Dimension (SCD).

You need to add a task or component to the package that allows you to implement the SCD logic.

What should you use?

- A. a Data Conversion component
- B. an Execute SQL task that executes a MERGE statement on the database
- C. a Merge component
- D. an Expression task

Correct Answer: C

Note: Type of Slowly Changing Dimensions Slowly Changing Dimensions are categorized into three types named: Type 1, Type 2, and Type3. The Type 1 SCD does not maintain the history of changing attributes, it overwrites values of the attributes. Type 2 maintains historical values for changing attributes. Type 3 that we do not use much maintains separate columns for changed attributes. SSIS SCD wizard supports both Type 1 and Type 2.

Using MERGE instead of SCD wizard Replacement of SCD wizard with MERGE is not a straightforward technique. If the SCD has both Type 1 and Type 2 types attributes, they need to be handled separately.

QUESTION 5

You are designing a SQL Server Integration Services (SSIS) package that uploads a file to a table named Orders in a SQL Azure database. The company's auditing policies have the following requirements:

Correct Answer: A

Reference: <http://msdn.microsoft.com/en-us/library/ms140223.aspx>

QUESTION 6

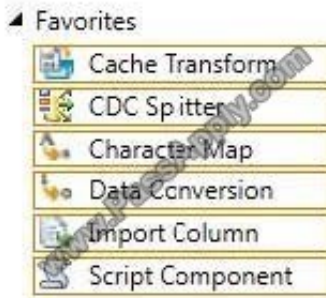
You are developing a SQL Server Integration Service (SSIS) package. The package loads a customer dimension table by using a data flow task.

Changes to the customer attributes must be tracked over time.

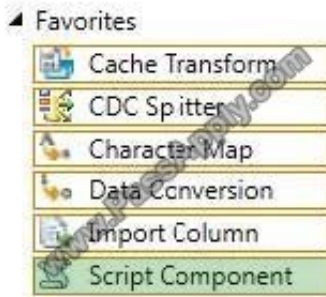
You need to produce a checksum value to identify the rows that have changed since the last Extract, Transform and Load (ETL) process execution. You need to use the least amount of development effort to achieve this goal.

Which transformation should you use? (To answer, select the appropriate transformation in the answer area.)

Hot Area:



Correct Answer:



QUESTION 7

You have a data warehouse that includes a table named [Fact].[sales]. The table has four partitions. There are no foreign keys defined on the [Fact].[sales] table.

You identify an issue with the first partition. You must reload the data for the first partition as quickly as possible.

You need to prepare the partition for reloading data.

How should you complete the Transact-SQL statement? To answer, drag the appropriate Transact-SQL segments to the correct locations. Each Transact-SQL segment may be used once, more than once, or not at all. You may need to drag

the split bar between panes or scroll to view content.

Select and Place:



Transact-SQL segments

- WITH (PARTITIONS (1))
- WITH (PARTITIONS (1 to 4))
- WITH (PARTITIONS (1,2,3,4))
- WITH (PARTITIONS (4))
- WITH (PARTITIONS (3))
- TRUNCATE TABLE Fact.Sales
- DELETE FROM Fact.Sales

Answer area

- Transact-SQL segment
- Transact-SQL segment

Correct Answer:

Transact-SQL segments

- WITH (PARTITIONS (1))
- WITH (PARTITIONS (1 to 4))
- WITH (PARTITIONS (4))
- WITH (PARTITIONS (3))
- TRUNCATE TABLE Fact.Sales

Answer area

- WITH (PARTITIONS (1,2,3,4))
- DELETE FROM Fact.Sales

QUESTION 8

You administer a large and complex SQL Server Integration Services (SSIS) solution in the SSIS catalog.

You are instructed to execute a package by using PowerShell. You need to create the correct PowerShell command.

How should you place the four code segments in sequence? (To answer, move the appropriate code segments from the list of code segments to the answer area and arrange them in the correct order.)

Select and Place:



```
.Folders["SSIS70463"]
.Projects["Production"]
.Packages["Package.dtsx"].Execute("false",
$ProductionEnvironment)
$SSIS2012.Catalogs["SSISDB"]
```

Correct Answer:

```
$SSIS2012.Catalogs["SSISDB"]
.Folders["SSIS70463"]
.Projects["Production"]
.Packages["Package.dtsx"].Execute("false",
$ProductionEnvironment)
```

QUESTION 9

You are developing a SQL Server Integration Services (SSIS) package to implement an incremental data load strategy. The package reads rows from a source system and compares them to rows in a destination system. New rows will be inserted and changed rows will be updated.

You have used a Lookup transformation and a Conditional Split transformation. The Lookup transformation joins the source and destination table on the business key, and includes all columns from the destination table in the data flow output.

The Conditional Split transformation inspects the destination columns and directs data flow to either insert new records or update existing records.

You need to configure the Lookup transformation to ensure that all records flow to the Conditional Split transformation, regardless of whether the rows match an existing row in the destination table.

Which setting should you select? (To answer, select the appropriate option in the answer area.)

Hot Area:



Cache connection manager
 OLE DB connection manager

Specify how to handle rows with no matching entries

Ignore Failure
Redirect rows to error output
Fail component
Redirect rows to no match output

Correct Answer:

Cache connection manager
 OLE DB connection manager

Specify how to handle rows with no matching entries

Ignore Failure
Redirect rows to error output
Fail component
Redirect rows to no match output

QUESTION 10

After you answer a question in this section, you will NOT be able to return to it. As a result, these questions will not appear in the review screen.

You create a set of Microsoft SQL Server Integration Services (SSIS) packages to support an ETL process. You need to deploy the SSIS packages and meet the following requirements:

1. Maximize ease of use for backup processes.
2. Manage security of packages from a single place.
- 3.



Maintain versioning of packages.

4.

Implement parameters to assign values to packages.

5.

Use stored procedures to run SSIS packages.

6.

Use SQL Server Agent to run packages.

Solution: You use the Project Deployment model. You save the packages to the msdb database.

Does this meet the goal?

A. Yes

B. No

Correct Answer: B

Built-in stored procedures only work for with an SSIS catalog to store.

References: <https://docs.microsoft.com/en-us/sql/integration-services/packages/run-integration-services-ssis-packages>

QUESTION 11

A SQL Server Integration Services (SSIS) package imports daily transactions from several files into a SQL Server table named Transaction. Each file corresponds to a different store and is imported in parallel with the other files. The data flow tasks use OLE DB destinations in fast load data access mode.

The number of daily transactions per store can be very large and is growing. The Transaction table does not have any indexes.

You need to minimize the package execution time.

What should you do?

A. Partition the table by day and store.

B. Create a clustered index on the Transaction table.

C. Run the package in Performance mode.

D. Increase the value of the Row per Batch property.

Correct Answer: D

Explanation: * Data Access Mode ?This setting provides the '\\fast load\\' option which internally uses a BULK INSERT statement for uploading data into the destination table instead of a simple INSERT statement (for each single row) as in the case for other options.



* BULK INSERT parameters include:

ROWS_PER_BATCH =rows_per_batch

Indicates the approximate number of rows of data in the data file. By default, all the data in the data file is sent to the server as a single transaction, and the number of rows in the batch is unknown to the query optimizer. If you specify

ROWS_PER_BATCH (with a value > 0) the server uses this value to optimize the bulk- import operation. The value specified for ROWS_PER_BATCH should approximately the same as the actual number of rows.

QUESTION 12

You are designing a data warehouse with two fact tables. The first table contains sales per month and the second table contains orders per day.

Referential integrity must be enforced declaratively.

You need to design a solution that can join a single time dimension to both fact tables.

What should you do?

- A. Create a view on the sales table.
- B. Partition the fact tables by day.
- C. Create a surrogate key for the time dimension.
- D. Change the level of granularity in both fact tables to be the same.

Correct Answer: D

[70-767 VCE Dumps](#)

[70-767 Exam Questions](#)

[70-767 Braindumps](#)



To Read the [Whole Q&As](#), please purchase the [Complete Version](#) from [Our website](#).

Try our product !

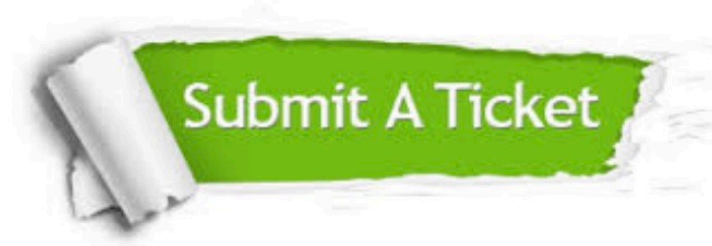
100% Guaranteed Success
100% Money Back Guarantee
365 Days Free Update
Instant Download After Purchase
24x7 Customer Support
Average 99.9% Success Rate
More than 800,000 Satisfied Customers Worldwide
Multi-Platform capabilities - [Windows](#), [Mac](#), [Android](#), [iPhone](#), [iPod](#), [iPad](#), [Kindle](#)

We provide exam PDF and VCE of Cisco, Microsoft, IBM, CompTIA, Oracle and other IT Certifications.
You can view Vendor list of All Certification Exams offered:

<https://www.passapply.com/allproducts>

Need Help

Please provide as much detail as possible so we can best assist you.
To update a previously submitted ticket:



 <p>One Year Free Update Free update is available within One Year after your purchase. After One Year, you will get 50% discounts for updating. And we are proud to boast a 24/7 efficient Customer Support system via Email.</p>	 <p>Money Back Guarantee To ensure that you are spending on quality products, we provide 100% money back guarantee for 30 days from the date of purchase.</p>	 <p>Security & Privacy We respect customer privacy. We use McAfee's security service to provide you with utmost security for your personal information & peace of mind.</p>
---	---	--

Any charges made through this site will appear as Global Simulators Limited.
All trademarks are the property of their respective owners.
Copyright © passapply, All Rights Reserved.