



70-744^{Q&As}

Securing Windows Server 2016

Pass Microsoft 70-744 Exam with 100% Guarantee

Free Download Real Questions & Answers **PDF** and **VCE** file from:

<https://www.passapply.com/70-744.html>

100% Passing Guarantee
100% Money Back Assurance

Following Questions and Answers are all new published by Microsoft
Official Exam Center

- ⚙ **Instant Download** After Purchase
- ⚙ **100% Money Back** Guarantee
- ⚙ **365 Days** Free Update
- ⚙ **800,000+** Satisfied Customers





QUESTION 1

You have a Hyper-V host named Server1 that runs Windows Server 2016. Server1 has a generation 2 virtual machine named VM1 that runs Windows 10.

You need to ensure that you can turn on BitLocker Drive Encryption (BitLocker) for drive C: on VM1. What should you do?

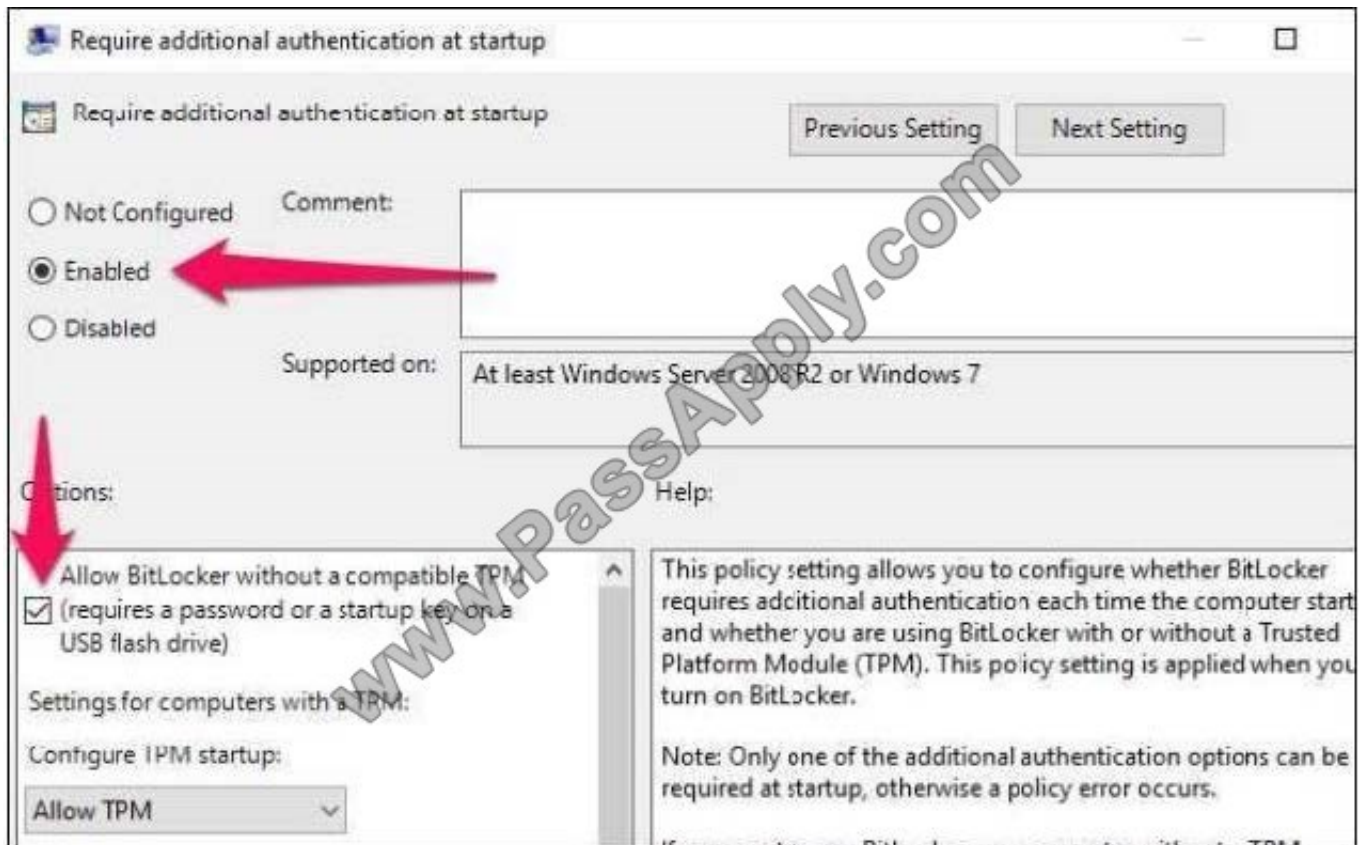
- A. From Server1, install the BitLocker feature.
- B. From Server1, enable nested virtualization for VM1.
- C. From VM1, configure the Require additional authentication at startup Group Policy setting.
- D. From VM1, configure the Enforce drive encryption type on fixed data drives Group Policy setting.

Correct Answer: C

<https://www.howtogeek.com/howto/6229/how-to-use-bitlocker-on-drives-without-tpm/> If you don't use TPM for protecting a drive, there is no such Virtual TPM or VM Generation, or VM Configuration version requirement, you can even use BitLocker without TPM Protector with earlier versions of Windows. How to Use BitLocker Without a TPM You can bypass this limitation through a Group Policy change. If your PC is joined to a business or school domain, you can't change the Group Policy setting yourself. Group policy is configured centrally by your network administrator. To open the Local Group Policy Editor, press Windows+R on your keyboard, type "gpedit.msc" into the Rundialog box, and press Enter. Navigate to Local Computer Policy > Computer Configuration > Administrative Templates > Windows Components > BitLocker Drive Encryption > Operating System Drives in the left pane.



Double-click the "Require additional authentication at startup" option in the right pane.



Select "Enabled" at the top of the window, and ensure the "Allow BitLocker without a compatible TPM (requires a password or a startup key on a USB flash drive)" checkbox is enabled here. Click "OK" to save your changes. You can now close the Group Policy Editor window. Your change takes effect immediately--you don't even need to reboot.

QUESTION 2

Your network contains an Active Directory domain.

You install Security Compliance Manager (SCM) 4.0 on a server that runs Windows Server 2016.

You need to modify a baseline, and then make the baseline available as a domain policy.

Which four actions should you perform in sequence?

Select and Place:



Export the baseline as a Group Policy Object (GPO) backup	
Duplicate a baseline	
Modify the settings of a baseline	
Import settings into a Group Policy object (GPO)	
Export the baseline as a Microsoft Excel file	
Export the baseline as a SCAP file	
Restore a Group Policy Object (GPO) from a backup	

Correct Answer:

	Duplicate a baseline
	Modify the settings of a baseline
	Export the baseline as a Group Policy Object (GPO) backup
	Import settings into a Group Policy object (GPO)
Export the baseline as a Microsoft Excel file	
Export the baseline as a SCAP file	
Restore a Group Policy Object (GPO) from a backup	

1.



Duplicate a baseline.

2.

Modify the settings of a baseline.

3.

Export the baseline as a Group Policy Object (GPO) backup4. Import settings into a Group Policy object (GPO)

QUESTION 3

Note: This question is part of a series of questions that present the same scenario. Each question in the series contains a unique solution that might meet the stated goals. Some question sets might have more than one correct solution, while

others might not have a correct solution.

After you answer a question in this sections, you will NOT be able to return to it. As a result, these questions will not appear in the review screen.

You manage a file server that runs Windows Server 2016. The file server contains the volumes configured as shown in the following table.

Volume label	Volume letter	Size(TB)	Format
System	C	4	NTFS
HRFiles	H	8	NTFS
SalesFiles	J	8	ReFS
DevFiles	K	10	NTFS
BackUp	L	6	ReFS

You need to encrypt DevFiles by using BitLocker Drive Encryption (ButLocker). Solution: You run the manage-bde.exe command and specify the -on parameter. Does this meet the goal?

A. Yes

B. No

Correct Answer: A

<https://docs.microsoft.com/en-us/windows-server/administration/windows-commands/manage-bde-on>

QUESTION 4

You have a server named Server1 that runs Windows Server 2016.

You configure Just Enough Administration (JEA) on Server1.



You need to view a list of commands that will be available to a user named User1 when User1 establishes a JEA session to Server1.

Which cmdlet should you use?

- A. Trace-Command
- B. Get-PSSessionCapability
- C. Get-PSSessionConfiguration
- D. Show-Command

Correct Answer: B

<https://docs.microsoft.com/en-us/powershell/module/Microsoft.PowerShell.Core/get-pssessioncapability?view=powershell-5.0>. The Get-PSSessionCapability cmdlet gets the capabilities of a specific user on a constrained session configuration. Use this cmdlet to audit customized session configurations for users. Starting in Windows PowerShell 5.0, you can use the RoleDefinitions property in a session configuration (.pssc) file. Using this property lets you grant users different capabilities on a single constrained endpoint based on group membership. The Get-PSSessionCapability cmdlet reduces complexity when auditing these endpoints by letting you determine the exact capabilities granted to a user. This command is used by I.T. Administrator (The "You" mention in the question) to verify configuration for a user.

QUESTION 5

Your network contains an Active Directory domain named contoso.com. The domain contains a file server named Server1 that runs Windows Server 2016. Server1 has a shared folder named Share1.

You plan to create a subfolder in Share1 for each domain user.

You need to limit each user to using 100 MB of data in their respective subfolder.

The solution must enable the users to be notified when they use 80 percent of the available space in the subfolder.

Which tool should you use?

- A. File Explorer
- B. Shared Folders
- C. Server Manager
- D. Disk Management
- E. Storage Explorer
- F. Computer Management
- G. System Configuration
- H. File Server Resource Manager (FSRM)

Correct Answer: H



QUESTION 6

Your network contains an Active Directory domain named contoso.com.

The domain contains 10 computers that are in an organizational unit (OU) named OU1.

You deploy the Local Administrator Password Solution (LAPS) client to the computers.

You link a Group Policy object (GPO) named GPO1 to OU1, and you configure the LAPS password policy settings in GPO1.

You need to ensure that the administrator passwords on the computers in OU1 are managed by using LAPS.

Which two actions should you perform? Each correct answer presents part of the solution.

- A. Restart the domain controller that hosts the PDC emulator role.
- B. Update the Active Directory Schema.
- C. Enable LDAP encryption on the domain controllers.
- D. Restart the computers.
- E. Modify the permissions on OU1.

Correct Answer: BE

QUESTION 7

You have a server named Server1 that runs Windows Server 2016 and is configured as a DNS server. You need to ensure that Server1 can validate records from public DNSSEC-signed DNS zones. What should you do?

- A. From DNS Manager, sign a zone.
- B. From DNS Manager select Enable DNSSEC validation for remote responses
- C. From PowerShell, run Add-DnsServerResourceRecordDnsKey.
- D. From DNS Manager, add a trust anchor.

Correct Answer: B

QUESTION 8

You have two servers named Server1 and Server2 that run Windows Server 2016 and are in a workgroup. Server1 is used as a reference computer to configure the security baseline for the other computers in the workgroup.

You need to apply the Group Policy computer settings of Server1 to Server2.

Which three actions should you perform in sequence? To answer, move the appropriate actions from the list of actions to the answer area and arrange them in the correct order.



Select and Place:

Run 1gpo.exe and specify the /b parameter	
From Registry Editor, export a registry file	
From Registry Editor, import a registry file	
Run 1gpo.exe and specify the /g parameter	
Copy files from Server1 to Server2	
Run 1gpo.exe and specify the /parse parameter	

Correct Answer:

	From Registry Editor, import a registry file
From Registry Editor, export a registry file	Run 1gpo.exe and specify the /b parameter
	Run 1gpo.exe and specify the /parse parameter
Run 1gpo.exe and specify the /g parameter	
Copy files from Server1 to Server2	

QUESTION 9

Windows Firewall rules can be configured using PowerShell.

The "Set-NetFirewallProfile" cmdlet configures settings that apply to the per-profile configurations of the Windows Firewall with Advanced Security.

What is the default setting for the AllowInboundRules parameter when managing a GPO?

A. FALSE

B. NotConfigured

Correct Answer: B

The default setting when managing a computer is True. When managing a GPO, the default setting is NotConfigured. The NotConfigured value is only valid when configuring a Group Policy Object (GPO). This parameter removes the setting from the GPO, which results in the policy not changing the value on the computer when the policy is applied.

QUESTION 10

Your network contains two Active Directory forests named adatum.com and priv.adatum.com.

You deploy Microsoft Identity Manager (MIM) 2016 to the priv.adatum.com domain, and you implement Privileged Access Management (PAM).

You create a PAM role named Group1 as shown in the following exhibit.



```
Role ID           : 95798970-1e5c-47c3-a979-92f2b7085c7b
Display Name      : Group1
Description       :
TTL               : 01:00:00
Available From    : 8:00 AM
Available To      : 5:00 PM
MFA Enabled       : False
Approval Enabled  : False
Availability Window Enabled : False
Approvers         : {}
Candidates        : {SourceAccount:User1, SourceDomain: Adatum.com,
SourceAccountSID:S-1-5-21-4254109968-2167380517-3067058946-2105,
SourceResourceID:7e4c20c5-a99c-4af0-975c-1b6c552473f5;
SourcePhoneNumber:, SourceEmailAddress:, PrivAccount:PRIV.User1,
PrivUserPrincipalName: PRIV.User1@Priv.Adatum.com, PrivPINCode:,
PrivAccountSID:S-1-5-21-3707602553-2216980630-2518507001-2606,
SourceResourceID:08c9f233-2367-4bb7-b8fb-fe5a3b64a3ac,
IsEnable:True, SourceAccount:User3, SourceDomain: Adatum.com,
SourceAccountSID:S-1-5-21-4254109968-2167380517-3067058946-2107,
SourceResourceID:5074c824-0da3-4fed-bb11-b3a6114ec2bc;
SourcePhoneNumber:, SourceEmailAddress:, PrivAccount:PRIV.User3,
PrivUserPrincipalName: PRIV.User3@Priv.Adatum.com, PrivPINCode:,
PrivAccountSID:S-1-5-21-3707602553-2216980630-2518507001-2608,
SourceResourceID:7a958cd8-1c09-431e-bf01-fdb071b90d4f, IsEnable:True}

Privileges        : {SourceAccountName:Group1;
SourceAccountSID:S-1-5-21-4254109968-2167380517-3067058946-2104;
SourceDomain:Adatum.com PrivAccountName:ADATUM.Group1;
PrivAccountSID:S-1-5-21-3707602553-2216980630-2518507001-2605;
PrivGroupResourceId:678cc85f-0b2d-4418-a4b8-ec03eaa923a2}
```

Use the drop-down menus to select the answer choice that completes each statement based on the information presented in the graphic.

Hot Area:



If Priv.User1 requests the Group1 PAM role at 07:00, [answer choice].

▼
the request will be denied
Priv.User1 will be added to Group1 immediately
Priv.User1 will be added to Group1 as soon as the request is approved
Priv.User1 will be added to Group1 at 8:00

If Prive.User2 requests the Group1 PAM role at 09:00, [answer choice].

▼
the request will be denied
Priv.User2 will be added to Group1 immediately
Priv.User2 will be added to Group1 as soon as the request is approved

Correct Answer:

If Priv.User1 requests the Group1 PAM role at 07:00, [answer choice].

▼
the request will be denied
Priv.User1 will be added to Group1 immediately
Priv.User1 will be added to Group1 as soon as the request is approved
Priv.User1 will be added to Group1 at 8:00

If Prive.User2 requests the Group1 PAM role at 09:00, [answer choice].

▼
the request will be denied
Priv.User2 will be added to Group1 immediately
Priv.User2 will be added to Group1 as soon as the request is approved



References: <https://tlktechidentitythoughts.wordpress.com/2016/09/07/mim-2016-setting-up-privileged-access-management-pam-in-an-existing-domain-using-the-built-in-pam-tool/>

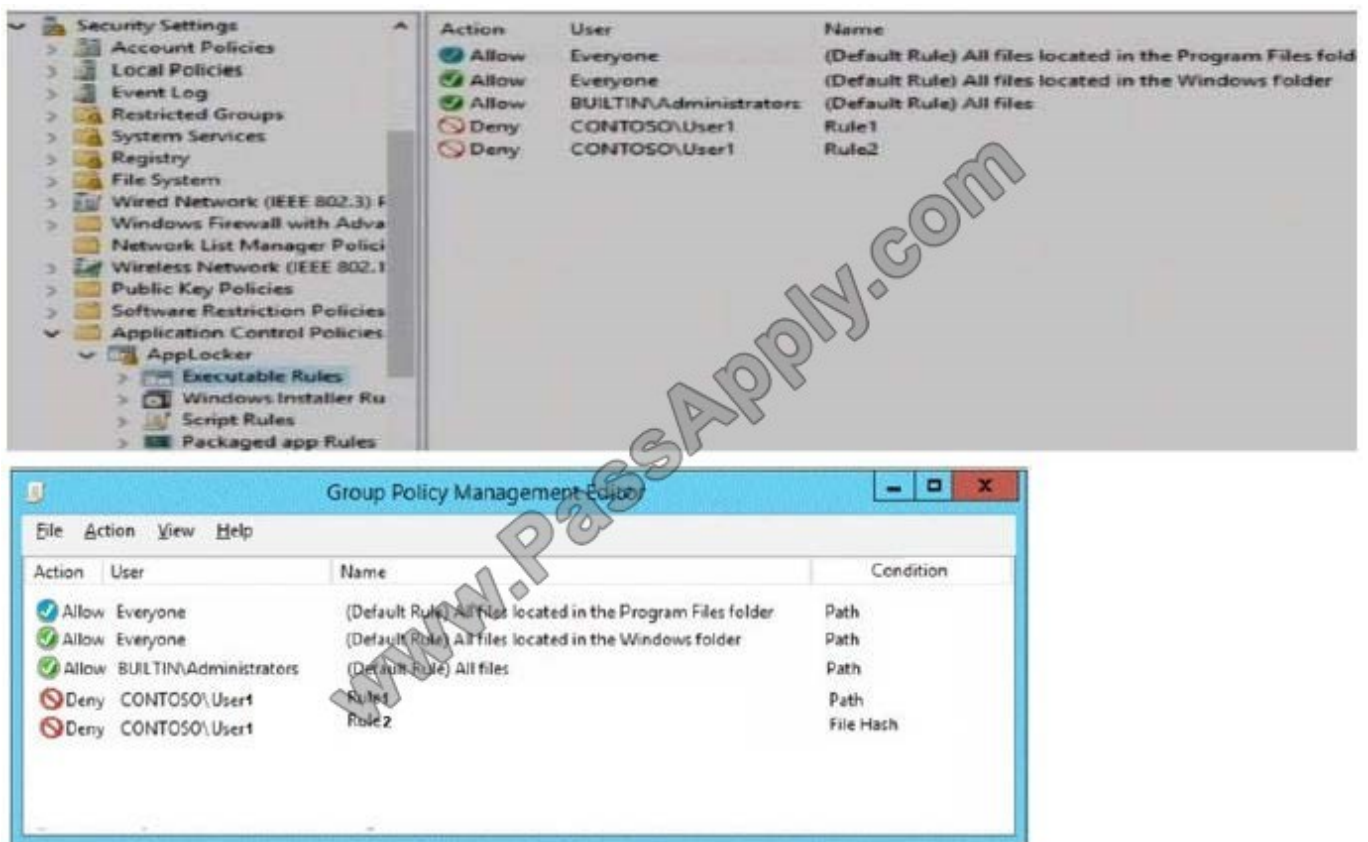
QUESTION 11

Your network contains an Active Directory domain named contoso.com. The domain contains a server named Server1 that runs Windows Server 2016.

A user named User1 is a member of the local Administrators group.

Server1 has the AppLocker rules configured as shown in the exhibit. (Click the Exhibit button.)

Exhibit:



Rule1 and Rule2 are configured as shown in the following table.

Rule name	Path	File hash
Rule1	D:\Folder1*.*	Not applicable
Rule2	Not applicable	App2.exe

You verify that User1 is unable to run App2.exe on Server1.

Which changes will allow User1 to run D:\Folder1\Program.exe and D:\Folder2\App2.exe? To answer select the appropriate options in the answer area.



Hot Area:

User1 can run D:\Folder1\Program.exe if Program.exe is [answer choice]

moved to another folder
renamed
updated

User1 can run D:\Folder2\App.exe if App2.exe is [answer choice]

moved to another folder
renamed
updated

Correct Answer:

User1 can run D:\Folder1\Program.exe if Program.exe is [answer choice]

moved to another folder
renamed
updated

User1 can run D:\Folder2\App.exe if App2.exe is [answer choice]

moved to another folder
renamed
updated

References: [https://technet.microsoft.com/en-us/library/ee449492\(v=ws.11\).aspx](https://technet.microsoft.com/en-us/library/ee449492(v=ws.11).aspx)

**QUESTION 12**

Your network contains an Active Directory domain named contoso.com. The domain contains a DNS server named Server1 that runs Windows Server 2016.

A domain-based Group Policy object (GPO) is used to configure the security policy of Server1.

You plan to use Security Compliance Manager (SCM) 4.0 to compare the security policy of Server1 to the WS2012 DNS Server Security 1.0 baseline.

You need to import the security policy into SCM. What should you do first?

- A. From Security Configuration and Analysis, use the Export Template option.
- B. Run the Copy-GPO cmdlet and specify the -TargetName parameter.
- C. Run the Backup-GPO cmdlet and specify the -Path parameter.
- D. Run the secedit.exe command and specify the/export parameter.

Correct Answer: C

<https://technet.microsoft.com/en-us/library/ee461052.aspx> Backup-GPO cmdlet and specify the -Path parameter creates a GPO backup folder with GUID name and issuitable to import to SCM 4.0

[70-744 VCE Dumps](#)

[70-744 Study Guide](#)

[70-744 Braindumps](#)



VCE & PDF

PassApply.com

<https://www.passapply.com/70-744.html>

2021 Latest passapply 70-744 PDF and VCE dumps Download

To Read the [Whole Q&As](#), please purchase the [Complete Version](#) from [Our website](#).

Try our product !

100% Guaranteed Success

100% Money Back Guarantee

365 Days Free Update

Instant Download After Purchase

24x7 Customer Support

Average 99.9% Success Rate

More than 800,000 Satisfied Customers Worldwide

Multi-Platform capabilities - [Windows](#), [Mac](#), [Android](#), [iPhone](#), [iPod](#), [iPad](#), [Kindle](#)

We provide exam PDF and VCE of Cisco, Microsoft, IBM, CompTIA, Oracle and other IT Certifications. You can view Vendor list of All Certification Exams offered:

<https://www.passapply.com/allproducts>

Need Help

Please provide as much detail as possible so we can best assist you.

To update a previously submitted ticket:



 One Year Free Update <p>Free update is available within One Year after your purchase. After One Year, you will get 50% discounts for updating. And we are proud to boast a 24/7 efficient Customer Support system via Email.</p>	 Money Back Guarantee <p>To ensure that you are spending on quality products, we provide 100% money back guarantee for 30 days from the date of purchase.</p>	 Security & Privacy <p>We respect customer privacy. We use McAfee's security service to provide you with utmost security for your personal information & peace of mind.</p>
---	---	--

Any charges made through this site will appear as Global Simulators Limited.

All trademarks are the property of their respective owners.

Copyright © passapply, All Rights Reserved.