



# 70-742<sup>Q&As</sup>

Identity with Windows Server 2016

## Pass Microsoft 70-742 Exam with 100% Guarantee

Free Download Real Questions & Answers **PDF** and **VCE** file from:

<https://www.passapply.com/70-742.html>

100% Passing Guarantee  
100% Money Back Assurance

Following Questions and Answers are all new published by Microsoft  
Official Exam Center

-  **Instant Download** After Purchase
-  **100% Money Back** Guarantee
-  **365 Days** Free Update
-  **800,000+** Satisfied Customers





### QUESTION 1

You have an enterprise certification authority (CA) named CA1.

You have a certificate template named UserAutoEnroll that is based on the User certificate template. Domain users are configured to autoenroll for UserAutoEnroll. A user named User1 has an email address defined in Active Directory. A user

named User2 does not have an email address defined in Active Directory.

You discover that User1 was issued a certificate based on UserAutoEnroll template automatically.

A request by user2 for a certificate based on the UserAutoEnroll template fails.

You need to ensure that all users can autoenroll for certificated based on the UserAutoEnroll template.

Which setting should you configure from the properties on the UserAutoEnroll certificate template?

- A. Issuance Requirements
- B. Request Handling
- C. Cryptography
- D. Subject Name

Correct Answer: D

---

### QUESTION 2

Your network contains an Active Directory domain. All client computers run Windows 10.

A client computer named Computer1 was in storage for five months and was unused during that time.

You attempt to sign in to the domain from Computer1 and receive an error message.

You need to ensure that you can sign in to the domain from Computer1.

What should you do?

- A. Unjoin Computer1 from the domain, and then join the computer to the domain.
- B. From Active Directory Administrative Center, reset the computer account of Computer1.
- C. From Active Directory Administrative Center, disable Computer1, and then enable the computer account of Computer1.
- D. From Active Directory Users and Computers, run the Delegation of Control Wizard.
- E. From Windows PowerShell on Computer1, run the Restore-Computer cmdlet
- F. From a command prompt, run the Systemreset.exe command



Correct Answer: A

Reference: <https://mcpmag.com/articles/2015/03/05/rejoin-a-computer-from-a-domain.aspx>

---

### QUESTION 3

Your network contains one Active Directory domain named adatum.com.

The domain contains a DNS server named Server1 that runs Windows Server 2016.

All domain computers use Server1 for DNS.

You sign adatum.com by using DNSSEC.

You need to configure the domain computers to validate DNS responses for adatum.com records.

What should you configure in Group Policy?

- A. Network List Manager Policies
- B. Network Access Protection (NAP)
- C. Name Resolution Policy
- D. Public Key Policy

Correct Answer: C

---

### QUESTION 4

Your network contains an Active Directory domain named contoso.com.

You create a domain security group named Group1 and add several users to it.

You need to force all of the users in Group1 to change their password every 35 days. The solution must affect the Group1 users only.

What should you do?

- A. Create a forms authentication provider, and then set the forms authentication credentials.
- B. From Active Directory Administrative Center, create a Password Setting object (PSO).
- C. Modify the Password Policy settings in a Group Policy object (GPO) that is linked to the domain, and then filter the GPO to Group1 only.
- D. From Windows PowerShell, run the Set-ADDomain cmdlet, and then run the Set-ADAccountPassword cmdlet.

Correct Answer: B

---

### QUESTION 5



Note: This question is part of a series of questions that use the same or similar answer choices. An answer choice may be correct for more than one question in the series. Each question is independent of the other questions in this series.

Information and details provided in a question apply only to that question.

Your network contains an Active Directory domain named contoso.com. The domain contains 5,000 user accounts.

You have a Group Policy object (GPO) named DomainPolicy that is linked to the domain and a GPO named DCPolicy that is linked to the Domain Controllers organizational unit (OU).

You need to force users to change their account password at least every 30 days.

What should you do?

- A. From the Computer Configuration node of DCPolicy, modify Security Settings.
- B. From the Computer Configuration node of DomainPolicy, modify Security Settings.
- C. From the Computer Configuration node of DomainPolicy, modify Administrative Templates.
- D. From the User Configuration node of DCPolicy, modify Security Settings.
- E. From the User Configuration node of DomainPolicy, modify Folder Redirection.
- F. From user Configuration node of DomainPolicy, modify Administrative Templates.
- G. From Preferences in the User Configuration node of DomainPolicy, modify Windows Settings.
- H. From Preferences in the Computer Configuration node of DomainPolicy, modify Windows Settings.

Correct Answer: B

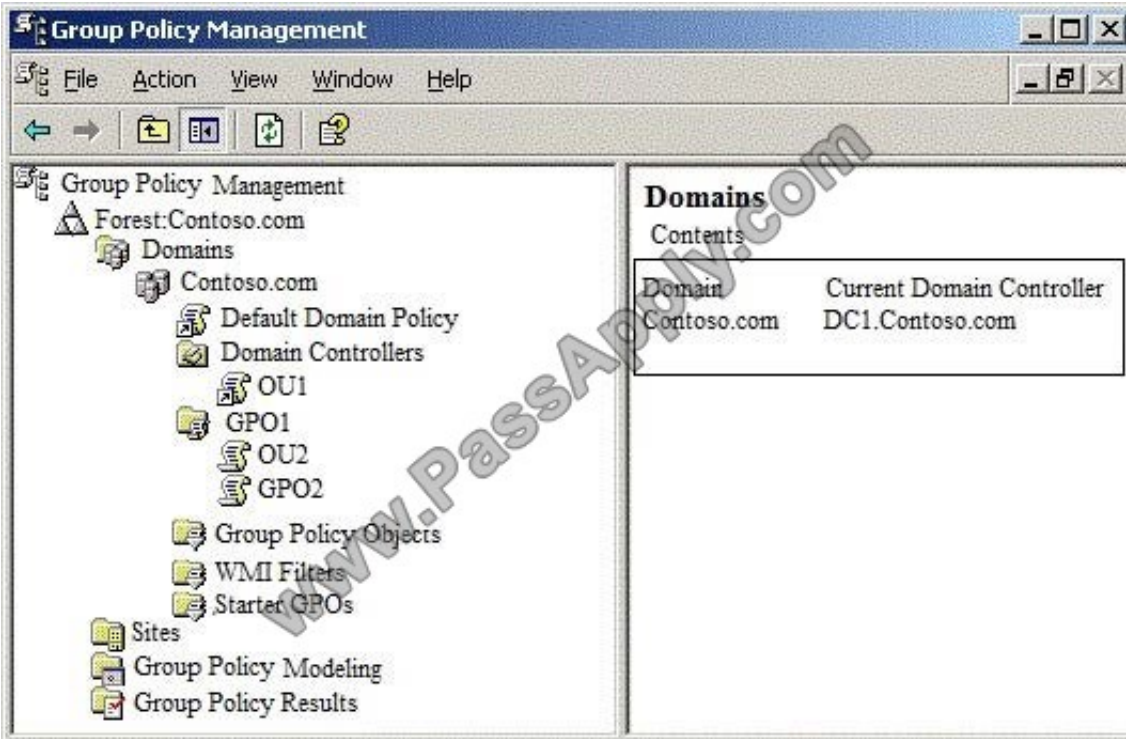
---

## QUESTION 6

### HOTSPOT

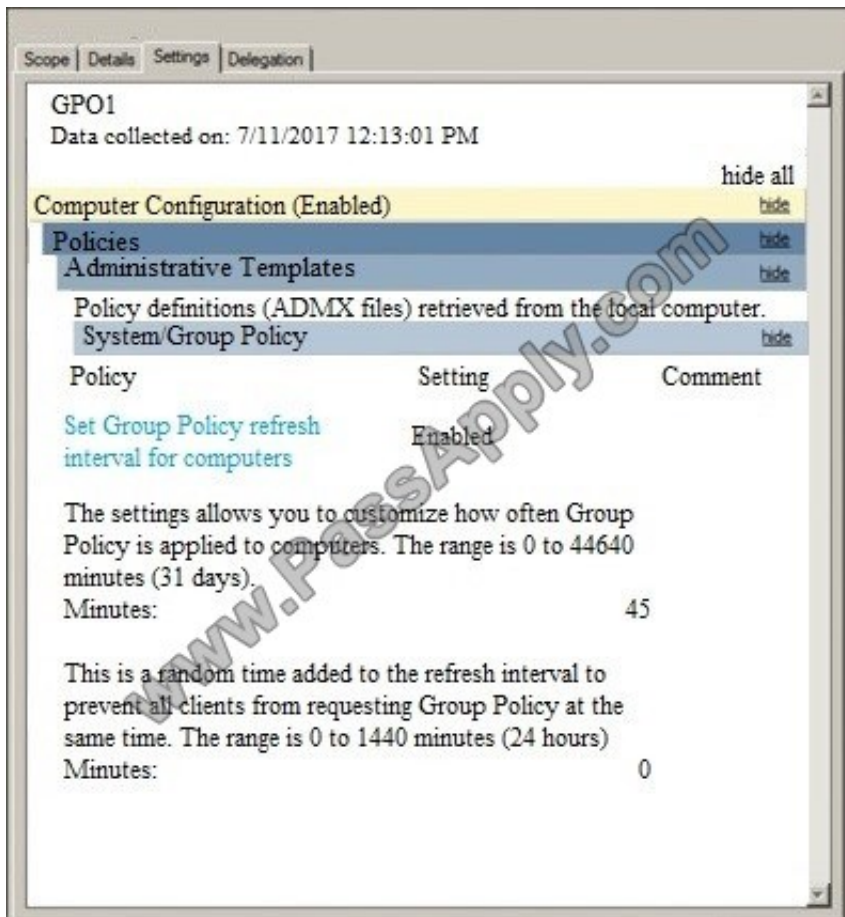
Your network contains an Active Directory domain named contoso.com.

You open Group Policy Management as shown in the Group Policy Management exhibit. (Click the Exhibit button.)



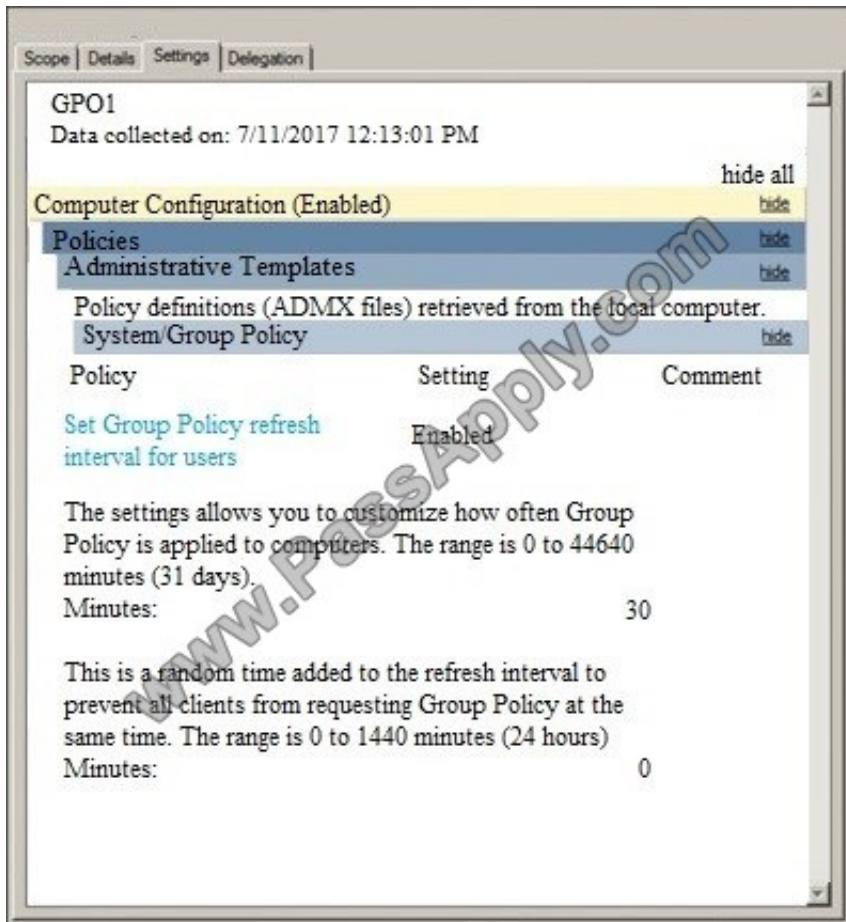
A user named User1 is in OU1. A computer named Computer2 is in OU2.

The settings of GPO1 are configured as shown in the GPO1 exhibit. (Click the Exhibit button.)





The settings of GPO2 are configured as shown in the GPO2 exhibit. (Click the Exhibit button.)



For each of the following statements, select Yes if the statement is true. Otherwise, select No. NOTE: Each correct selection is worth one point.

Hot Area:

### Answer Area

Statements	Yes	No
User1 signs in to Computer2. The user Group Policy settings will refresh every 45 minutes.	<input type="radio"/>	<input type="radio"/>
User1 signs in to Computer2. The computer Group Policy will refresh every 30 minutes.	<input type="radio"/>	<input type="radio"/>
Contoso/Administrator signs in to Computer2. The user group Policy settings will refresh every 45 minutes.	<input type="radio"/>	<input type="radio"/>



Correct Answer:

### Answer Area

Statements	Yes	No
User1 signs in to Computer2. The user Group Policy settings will refresh every 45 minutes.	<input type="radio"/>	<input checked="" type="radio"/>
User1 signs in to Computer2. The computer Group Policy will refresh every 30 minutes.	<input checked="" type="radio"/>	<input type="radio"/>
Contoso/Administrator signs in to Computer2. The user group Policy settings will refresh every 45 minutes.	<input type="radio"/>	<input checked="" type="radio"/>

### QUESTION 7

Your network contains an Active Directory domain named contoso.com.

The domain contains an enterprise root certification authority (CA) on a server that runs Windows Server 2016.

You need to configure the CA to support Online Certificate Status Protocol (OCSP) responders.

Which two actions should you perform? Each correct selection presents part of the solution.

NOTE: Each correct selection is worth one point.

- A. Add a new certificate template to issue.
- B. Modify the Authority Information Access (AIA) of the CA.
- C. Configure an enrollment agent.
- D. Install a standalone subordinate CA.
- E. Modify the CRL distribution point (CDP) of the CA.

Correct Answer: AB

Once the OCSP service is configured, we need to configure the OCSP Response Signing template. This process includes adding an Authority Information Access (AIA) extension and then issuing a new certificate template.

References: <https://www.poweradmin.com/blog/deploying-active-directory-certificate-services-and-online-responder/>

### QUESTION 8



Note: This question is part of a series of questions that present the same scenario. Each question in the series contains a unique solution that might meet the stated goals. Some question sets might have more than one correct solution, while

others might not have a correct solution.

After you answer a question in this section, you will NOT be able to return to it. As a result, these questions will not appear in the review screen.

Your network contains an Active Directory forest named contoso.com. The forest contains an Active Directory Rights Management Services (AD RMS) deployment.

Your company establishes a partnership with another company named Fabrikam, Inc. The network of Fabrikam contains an Active Directory forest named fabrikam.com and an AD RMS deployment.

You need to ensure that the users in contoso.com can access rights protected documents sent by the users in fabrikam.com.

Solution: From AD RMS in contoso.com, you configure fabrikam.com as a trusted publisher domain.

Does this meet the goal?

A. Yes

B. No

Correct Answer: A

By default, an AD RMS Licensing Server can issue use licenses for only content where it originally issued the publishing license. In some situations, this may not be acceptable. In order to specify a cluster that is allowed to issue use licenses for content protected by a different cluster, the first cluster must be defined as a trusted publishing domain. If content was published by another certification cluster either in your organization, for example, a subsidiary organization in another forest, or in a separate organization, your AD RMS cluster can grant use licenses to users for this content by configuring a Trusted Publishing Domain on your AD RMS cluster. By adding a Trusted Publishing Domain, you set up a trust relationship between your AD RMS cluster and the other certification cluster by importing the Trusted Publishing Certificate of the other cluster.

References: <https://books.google.co.za/books?id=gjR-BAAAQBAJandpg=PA397andlpg=PA397anddq=configure+a+partners+forest+as+a+trusted+publishing+domain+-+AD+RMSandsource=blandots=mohQXTyW9sandsig=NJ7oFHuLYOs72o9EMyQilscUW8andhl=enandsa=Xandved=0ahUKEwjuiW24sPbAhWGRMAKHQcEB6EQ6AEIOzAD#v=onepageandq=configure%20a%20partners%20forest%20as%20a%20trusted%20publishing%20domain%20-%20AD%20RMSandf=false>

## QUESTION 9

Your company has a main office and three branch offices. The network contains an Active Directory domain named contoso.com.

The main office contains three domain controllers. Each branch office contains one domain controller.

You discover the new settings in the Default Domain Policy are not applied in one of the branch offices, but all other Group Policy objects (GPOs) are applied.

You need to check the replication of the Default Domain Policy for the branch office.





What should you do from a domain controller in the main office?

- A. From Group Policy Management, click Default Domain Policy under Contoso.com, and then open the Scope tab.
- B. From a command prompt, run dcdiag.exe.
- C. From a command prompt, run repadmin.exe.
- D. From Windows PowerShell, run the Get-GPOReport cmdlet.

Correct Answer: C

---

#### QUESTION 10

Your company has multiple branch offices.

The network contains an Active Directory domain named contoso.com.

In one of the branch offices, a new technician is hired to add computers to the domain.

After successfully joining multiple computers to the domain, the technician fails to join any more computers to the domain.

You need to ensure that the technician can join an unlimited number of computers to the domain.

What should you do?

- A. Configure the technician's user account as a manager service account.
- B. Run the Set-ADComputer cmdlet.
- C. Run the Delegation of Control Wizard on the Computers container.
- D. Add the technician to the Domain Computers group.

Correct Answer: C

References: <https://www.itprotoday.com/active-directory/delegating-privileges-active-directory>

---

#### QUESTION 11

Your network contains an Active Directory domain named contoso.com.

You plan to deploy a new Active Directory Rights Management Services (AD RMS) cluster on a server named Server1.

You need to create the AD RMS service account. The solution must use the principle of least privilege.

What should you do?

- A. Create a local user account on Server1 and add the account to the Administrators group on Server1.
- B. Create a domain user account and add the account to the Administrators group on Server1.



- C. Create domain user account and add the account to the Domain Users group in the domain.
- D. Create a domain user account and add the account to the Account Operators group in the domain.

Correct Answer: C

---

#### QUESTION 12

You deploy a new enterprise certification authority (CA) named CA1.

You plan to issue certificates based on the User certificate template.

You need to ensure that the issued certificates are valid for two years and support autoenrollment.

What should you do first?

- A. Run the certutil.exe command and specify the resubmit parameter.
- B. Duplicate the User certificate template.
- C. Add a new certificate template for CA1 to issue.
- D. Modify the Request Handling settings for the CA.

Correct Answer: B

The built-in templates to do support allow auto-enrollment. You need to duplicate the template then modify the permissions on the new template. References:

<https://docs.centrixy.com/en/centrixy/adminref/index.html#page/cloudhelp/cloud-admin-install-create-cert-templates.html>

[70-742 PDF Dumps](#)

[70-742 VCE Dumps](#)

[70-742 Braindumps](#)



To Read the [Whole Q&As](#), please purchase the [Complete Version](#) from [Our website](#).

## Try our product !

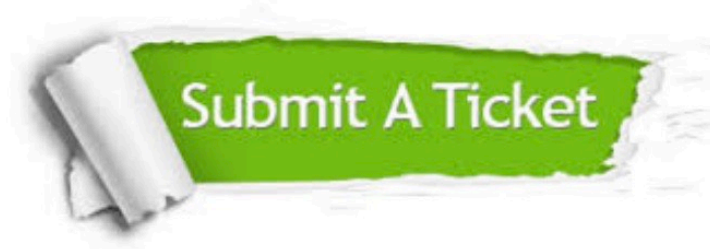
100% Guaranteed Success  
100% Money Back Guarantee  
365 Days Free Update  
Instant Download After Purchase  
24x7 Customer Support  
Average 99.9% Success Rate  
More than 800,000 Satisfied Customers Worldwide  
Multi-Platform capabilities - [Windows](#), [Mac](#), [Android](#), [iPhone](#), [iPod](#), [iPad](#), [Kindle](#)

We provide exam PDF and VCE of Cisco, Microsoft, IBM, CompTIA, Oracle and other IT Certifications. You can view Vendor list of All Certification Exams offered:

<https://www.passapply.com/allproducts>

## Need Help

Please provide as much detail as possible so we can best assist you.  
To update a previously submitted ticket:



 <p><b>One Year Free Update</b> Free update is available within One Year after your purchase. After One Year, you will get 50% discounts for updating. And we are proud to boast a 24/7 efficient Customer Support system via Email.</p>	 <p><b>Money Back Guarantee</b> To ensure that you are spending on quality products, we provide 100% money back guarantee for 30 days from the date of purchase.</p>	 <p><b>Security &amp; Privacy</b> We respect customer privacy. We use McAfee's security service to provide you with utmost security for your personal information &amp; peace of mind.</p>
---	---	--

Any charges made through this site will appear as Global Simulators Limited.  
All trademarks are the property of their respective owners.  
Copyright © passapply, All Rights Reserved.