



70-740^{Q&As}

Installation, Storage, and Compute with Windows Server 2016

Pass Microsoft 70-740 Exam with 100% Guarantee

Free Download Real Questions & Answers **PDF** and **VCE** file from:

<https://www.passapply.com/70-740.html>

100% Passing Guarantee
100% Money Back Assurance

Following Questions and Answers are all new published by Microsoft
Official Exam Center

-  **Instant Download** After Purchase
-  **100% Money Back** Guarantee
-  **365 Days** Free Update
-  **800,000+** Satisfied Customers





QUESTION 1

Note: This question is part of a series of questions that present the same scenario. Each question in the series contains a unique solution that might meet the stated goals. Some question sets might have more than one correct solution, while

others might not have a correct solution.

After you answer a question in this section, you will NOT be able to return to it. As a result, these questions will not appear in the review screen.

You have two servers that run Windows Server 2016.

You plan to create a Network Load Balancing (NLB) cluster that will contain both servers.

You need to configure the network cards on the servers for the planned NLB configuration.

Solution: You configure the network cards to be on a separate subnet and to have static IP addresses. You configure the cluster to use unicast.

Does this meet the goal?

- A. Yes
- B. No

Correct Answer: B

References: <https://technet.microsoft.com/en-us/windows-server-docs/networking/technologies/network-load-balancing>

QUESTION 2

You plan to install a Nano Server on a physical server named Nano1. Nano1 will host several virtual machines that will use live migration. Which package should you install on Nano1?

- A. Microsoft-NanoServer-SecureStartup-Package
- B. Microsoft-NanoServer-ShieldedVM-Package
- C. Microsoft-NanoServer-Compute-Package
- D. Microsoft-NanoServer-FailoverCluster-Package
- E. Microsoft-NanoServer-Storage Package

Correct Answer: C

QUESTION 3

You have a Scale-Out File Server that has a share named Share 1. Share1 contains a virtual disk file named Disk1.vhd.



You plan to create a guest failover cluster.

You need to ensure that you can use the virtual disk as a shared virtual disk for the guest failover cluster.

Which cmdlet should you use?

- A. Optimize-VHD
- B. Convert-VHD
- C. Set-VHD
- D. Optimize-VHDSet

Correct Answer: B

QUESTION 4

You are preparing an image of Windows Server 2016.

The image is missing the driver for a network adapter that is required in your environment.

You need to ensure that the image contains the network adapter driver.

Which three cmdlets should you use in sequence? To answer, move the appropriate cmdlets from the list of cmdlets to the answer area and arrange them in the correct order.

Select and Place:



Cmdlets

- Mount-WindowsImage
- Add-WindowsDriver
- Get-WindowsImage
- Save-WindowsImage
- Add-WindowsFeature
- Dismount-WindowsImage
- Optimize-WindowsImage

Answer Area

- 1
- 2
- 3

Correct Answer:

Cmdlets

-
-
- Get-WindowsImage
- Save-WindowsImage
- Add-WindowsFeature
-
- Optimize-WindowsImage

Answer Area

- 1 Mount-WindowsImage
- 2 Add-WindowsDriver
- 3 Dismount-WindowsImage



QUESTION 5

You have a server named Server1 that runs Windows Server 2016. Server1 has the Hyper-V server role installed and hosts a virtual machine named VM1.

Server1 has an NVMe storage device. Currently, the device is assigned to VM1 through a Discrete Device Assignment.

You need to make the storage device available to Server1.

Which four actions should you perform in sequence? To answer, move the appropriate actions from the list of actions to the answer area and arrange them in the correct order.

Select and Place:

Actions	Answer Area
Run the Remove-VMAssignableDevice cmdlet.	
Run the Mount-VMHostAssignableDevice cmdlet.	
Stop VM1.	
Enable the device in Device Manager.	
Disable the device in Device Manager.	

Correct Answer:



Actions	Answer Area
	Stop VM1.
	Run the Remove-VMAssignableDevice cmdlet.
	Run the Mount-VMHostAssignableDevice cmdlet.
	Enable the device in Device Manager.
Disable the device in Device Manager.	

If you want to return the device back to its original state, you will need to stop the VM and issue the following cmdlets:

Remove-VMAssignableDevice

Mount-VMHostAssignableDevice

You can then re-enable the device in device manager.

References:

<https://docs.microsoft.com/en-us/windows-server/virtualization/hyper-v/deploy/deploying-storage-devices-using-dda#removing-a-device-and-returning-it-to-the-host>

QUESTION 6

You have a Hyper-V host named Server1 that runs Windows Server 2016. Server 1 hosts a virtual machine named VM1 that runs Windows Server 2016.

Server1 has a USB 3.0 device attached to a PCI Express (PCIe) bus.

You need to provide VM1 with pass-through access to the USB 3.0 device.

Which three actions should you perform in sequence? To answer, move the appropriate actions from the list of actions to the answer area and arrange them in the correct order.

Select and Place:



Actions

- On Server1, run the **Dismount-VMHostAssignableDevice** cmdlet.
- On Server1, run the **Add-VMAssignableDevice** cmdlet
- On Server1, run the **Disable-PnPDevice** cmdlet
- On VM1, run the **Enable-PnPDevice** cmdlet
- On VM1, ran the **Mount-VMHostAssignable Device** cmdlet

Answer Area

- 1
- 2
- 3

Correct Answer:

Actions

-
-
-
- On VM1, run the **Enable-PnPDevice** cmdlet
- On VM1, ran the **Mount-VMHostAssignable Device** cmdlet

Answer Area

- 1 On Server1, run the **Disable-PnPDevice** cmdlet
- 2 On Server1, run the **Dismount-VMHostAssignableDevice** cmdlet.
- 3 On Server1, run the **Add-VMAssignableDevice** cmdlet

References: <https://blogs.technet.microsoft.com/heyscriptingguy/2016/07/14/passing-through-devices-to-hyper-v-vms-by-using-discrete-device-assignment/>

QUESTION 7

You have a server named Server1 that runs Windows Server 2016 Server1 is a Hyper-V host.

You have two network adapter cards on Server1 that are Remote Direct Memory Access (RDMA) -capable.

You need to aggregate the bandwidth of the network adapter cards for a virtual machine on Server1.

The solution must ensure that the virtual machine can use the RDMA capabilities of the network adapter cards.



Which command should you run first? To answer, select the appropriate options in the answer area.

Hot Area:

-Name Production -NetAdapterName "NIC 1", "NIC 2"
 \$true

Add-NetLbfoTeamNic
 Add-VmNetworkAdapter
 New-NetLbfoTeam
 Add-VmSwitch

-EnableEmbeddedTeaming
 -EnableIov
 -EnablePacketDirect

Correct Answer:

-Name Production -NetAdapterName "NIC 1", "NIC 2"
 \$true

Add-NetLbfoTeamNic
 Add-VmNetworkAdapter
 New-NetLbfoTeam
 Add-VmSwitch

-EnableEmbeddedTeaming
 -EnableIov
 -EnablePacketDirect

References: <https://docs.microsoft.com/en-us/windows-server/virtualization/hyper-v/virtual-switch/rdma-and-switch-embedded-teaming>

QUESTION 8

You have a server named Server1 that runs Windows Server 2016. Server1 has the Web Application Proxy role service installed.

You publish an application named App1 by using the Web Application Proxy.

You need to change the URL that users use to connect to App1 when they work remotely.

Which command should you run? To answer, select the appropriate options in the answer area.

Hot Area:

Add-WebApplicationProxyApplication
 Set-WebApplicationProxyApplication
 Set-WebApplicationProxyConfiguration

-BackendServerURL 'https://rdg.contoso.com/rdg1/'
 -ExternalCertificateThumbprint
 '1a2b3c4d5e6f1a2b3c4d5e6f1a2b3c4d5e6f1a2b'
 -ExternalURL 'https://rdg.contoso.com/rdg1/'
 -Name 'RDG1'

-ExternalPreAuthentication
 -ADFSRelyingPartyName 'Default provider'

ADFS
 ADFSforOAuth
 ClientCertificate
 PassThrough

-BackendServerAuthenticationSPN 'HTTP/RDG1'

Correct Answer:



```

Add-WebApplicationProxyApplication -BackendServerURL 'https://rdg.contoso.com/rdg1/'
Set-WebApplicationProxyApplication -ExternalCertificateThumbprint
Set-WebApplicationProxyConfiguration '1a2b3c4d5e6f1a2b3c4d5e6f1a2b3c4d5e6f1a2b'

-ExternalURL https://rdg.contoso.com/rdg1'
-Name 'RDG1'

-ExternalPreAuthentication ADFS
                           ADFSforOAuth
                           ClientCertificate
                           PassThrough
                           -ADFSRelyingPartyName 'Default provider'

-BackendServerAuthenticationSPN 'HTTP/RDG1'
```

QUESTION 9

You have three servers named Server1, Server2, and Server3. The servers are members of a Network Load Balancing (NLB) cluster named Cluster1.

You need to configure the handling priority for the traffic on port 443.

What should you do in Network Load Balancing Manager?

- A. From the cluster properties, configure the host priority
- B. From the host properties, configure the Filtering mode of a port rule
- C. From the host properties, configure the host priority
- D. From the cluster properties, configure the Filtering mode of a port rule

Correct Answer: A

<https://support.microsoft.com/en-za/help/323437/how-to-configure-network-load-balancing-parameters-in-windows-server-2>

QUESTION 10

Note: This question is part of a series of questions that present the same scenario. Each question in the series contains a unique solution that might meet the stated goals. Some question sets might have more than one correct solution, while

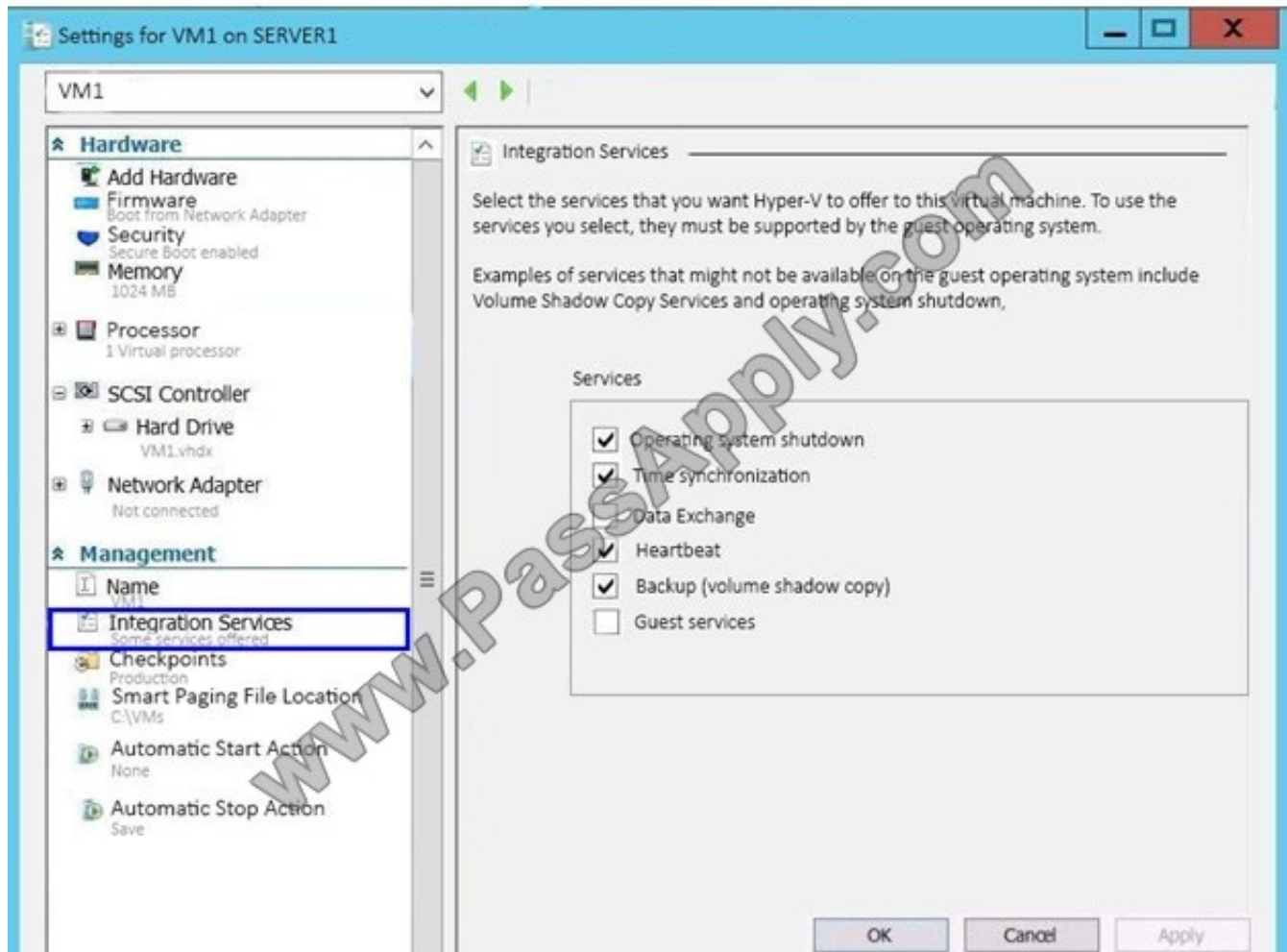
others might not have a correct solution.

After you answer a question in this section, you will NOT be able to return to it. As a result, these questions will not appear in the review screen.



You have a Hyper-V host named Server1 that hosts a virtual machine named VM1. Server1 and VM1 run Windows Server 2016.

The settings for VM1 are configured as shown in the exhibit. (Click the Exhibit button.)



You need to ensure that you can use the Copy-VMFile cmdlet on Server1 to copy files from VM1.

Solution: You enable the Data Exchange integration service for VM1.

Does this meet the goal?

- A. Yes
- B. No

Correct Answer: B

References: [https://technet.microsoft.com/en-us/library/dn798297\(v=ws.11\).aspx](https://technet.microsoft.com/en-us/library/dn798297(v=ws.11).aspx)

QUESTION 11

You have a Hyper-V host named HV1 that runs Windows Server 2016. HV1 is a guarded host that is part of a guarded



fabric. HV1 receives updates through the Semi-Annual Channel.

HV1 hosts the virtual machines shown in the following table.

Name	Operating system	Configuration
VM1	Windows Server 2012 R2	Generation 1 BitLocker Drive Encryption (BitLocker)-protected
VM2	Windows Server 2012 R2	Generation 2 Shielded virtual machine
VM3	Windows Server 2016	Generation 1 BitLocker Drive Encryption (BitLocker)-protected
VM4	Windows 10	Generation 2

HV1 has the virtual switches shown in the following table.

Name	Connection type	Virtual machines attached to the switch
SW1	External	VM3
SW2	Internal	VM2, VM4
SW3	Private	VM1

HV1 hosts the virtual machines shown in the following table. HV1 has the virtual switches shown in the following table.

All the virtual machines are running and are joined to the same domain. To which virtual machine can you connect by using PowerShell Direct?

- A. only VM1 and VM3
- B. only VM2 and VM4
- C. only VM3 and VM4
- D. VM1, VM2, VM3, and VM4

Correct Answer: C

<https://docs.microsoft.com/en-us/virtualization/hyper-v-on-windows/user-guide/powershell-direct>

QUESTION 12

Note: This question is part of a series of questions that present the same scenario. Each question in the series contains a unique solution that might meet the stated goals. Some question sets might have more than one correct solution, while others might not have a correct solution. After you answer a question in this section, you will NOT be able to return to it. As a result, these questions will not appear in the review screen. You network contains an Active Directory forest named contoso.com. The forest contains a child domain named eu.contoso.com.



You plan to implement live migration between two Hyper-V hosts that run Windows Server 2016. The hosts are configured as shown in the following table.

Host name	Configuration
Host1	<ul style="list-style-type: none">• Is a member of the contoso.com domain• Users an Intel Xeon processor released in 2012• Has an external virtual switch named Switch1• Hosts a virtual machine named VM1 that connects to Switch1
Host2	<ul style="list-style-type: none">• Is a member of the eu.contoso.com domain• Users an Intel Xeon processor released in 2016• Has an external virtual switch named Switch1

You need to ensure that you can perform a live migration of VM1 from Host1 to Host2.

Solution: You move Host2 to the contoso.com domain.

Does meet the goal?

A. Yes

B. No

Correct Answer: B

[Latest 70-740 Dumps](#)

[70-740 Study Guide](#)

[70-740 Braindumps](#)



To Read the [Whole Q&As](#), please purchase the [Complete Version](#) from [Our website](#).

Try our product !

100% Guaranteed Success
100% Money Back Guarantee
365 Days Free Update
Instant Download After Purchase
24x7 Customer Support
Average 99.9% Success Rate
More than 800,000 Satisfied Customers Worldwide
Multi-Platform capabilities - [Windows](#), [Mac](#), [Android](#), [iPhone](#), [iPod](#), [iPad](#), [Kindle](#)

We provide exam PDF and VCE of Cisco, Microsoft, IBM, CompTIA, Oracle and other IT Certifications. You can view Vendor list of All Certification Exams offered:

<https://www.passapply.com/allproducts>

Need Help

Please provide as much detail as possible so we can best assist you.
To update a previously submitted ticket:



 <p>One Year Free Update Free update is available within One Year after your purchase. After One Year, you will get 50% discounts for updating. And we are proud to boast a 24/7 efficient Customer Support system via Email.</p>	 <p>Money Back Guarantee To ensure that you are spending on quality products, we provide 100% money back guarantee for 30 days from the date of purchase.</p>	 <p>Security & Privacy We respect customer privacy. We use McAfee's security service to provide you with utmost security for your personal information & peace of mind.</p>
---	---	--

Any charges made through this site will appear as Global Simulators Limited.
All trademarks are the property of their respective owners.
Copyright © passapply, All Rights Reserved.