



70-692^{Q&As}

Upgrading Your Windows XP Skills to MCSA Windows 8

Pass Microsoft 70-692 Exam with 100% Guarantee

Free Download Real Questions & Answers **PDF** and **VCE** file from:

<https://www.passapply.com/70-692.html>

100% Passing Guarantee
100% Money Back Assurance

Following Questions and Answers are all new published by Microsoft
Official Exam Center

-  **Instant Download** After Purchase
-  **100% Money Back** Guarantee
-  **365 Days** Free Update
-  **800,000+** Satisfied Customers





QUESTION 1

You use Windows 7 (32-bit) on your client computer. You create a complete backup of the client computer.

You need to install Windows 8.1 Pro (64-bit) on the computer.

What should you do?

- A. Install Windows 8.1 Pro 64-bit on the existing volume by performing an upgrade installation.
- B. Install Windows 8.1 Pro 64-bit on the existing volume by performing a custom installation.
- C. Install Windows 8.1 Pro Pack.
- D. Install Windows 8.1 into a virtual hard disk (VHD) file.

Correct Answer: B

QUESTION 2

You update the video card driver on a computer that runs Windows 8.1.

You can no longer configure the display settings to extend the display to a projector.

You need to restore the display options as quickly as possible and retain all user data.

What should you do?

- A. Run the DisplaySwitch /extend command.
- B. Roll back the video card driver to the previous version.
- C. Start the computer from the Windows 8 installation media and perform a system image recovery.
- D. Run the sfc /scannow command.

Correct Answer: B

Rolling back the driver is the simplest and fastest solution.



C:\Users\Chaudhry\Desktop\1.jpg



C:\Users\Chaudhry\Desktop\1.jpg

Further Information:

The DisplaySwitch /extend command might not work if the driver is broken. The sfc /scannow command checks system files for consistency. And a system image recovery will affect the user data.



QUESTION 3

A company has 100 client computers that run various editions of Windows 7. The company plans to upgrade or replace computers so that all client computers run an edition of Windows 8.1.

The company plans to use the following programs and features on the Windows 8 computers:

32-bit and 64-bit software

Desktop apps Windows Media Player Storage Spaces

You need to identify the installation or upgrade paths that support the programs and features.

Which three paths meet the requirements? (Each correct answer presents a complete solution. Choose three.)

- A. Purchase hardware with Windows RT pre-installed.
- B. Perform a clean installation of Windows RT.
- C. Perform a clean installation of Windows 8.1 Pro.
- D. Perform a clean installation of Windows 8.1.
- E. Upgrade from Windows 7 Enterprise to Windows 8.1 Enterprise.

Correct Answer: CDE

Explanation: <http://www.microsoft.com/en-us/windows/enterprise/products-and-technologies/windows-8-1/compare/default.aspx> Compare Windows 8.1 Editions

QUESTION 4

A company has an Active Directory Domain Services (AD DS) domain. All company employees work on their personally owned computers, which are not members of the domain. The computers are running Windows XP Home, Windows

Vista Business, Windows 7 Home Premium, or Windows 8.1. The company is a volume license subscriber.

The company plans to deploy Group Policies to all computers. You need to ensure that every employee's computer is subject to the Group Policies.

What should you do first?

- A. Start each computer from a USB flash drive on which you have installed BitLocker To Go.
- B. Start each computer from a USB flash drive on which you have installed Windows To Go.
- C. Join all the computers to the domain.
- D. Join all the computers to the same homegroup.

Correct Answer: B



QUESTION 5

You are the desktop administrator for your company, which uses Windows 8.1 computers.

The company decides to use virtual disks at your location so the programmers can build and test applications in a closed network.

You need to use the file given as a virtual hard disk and be able to boot to the vhd.

What should you do?

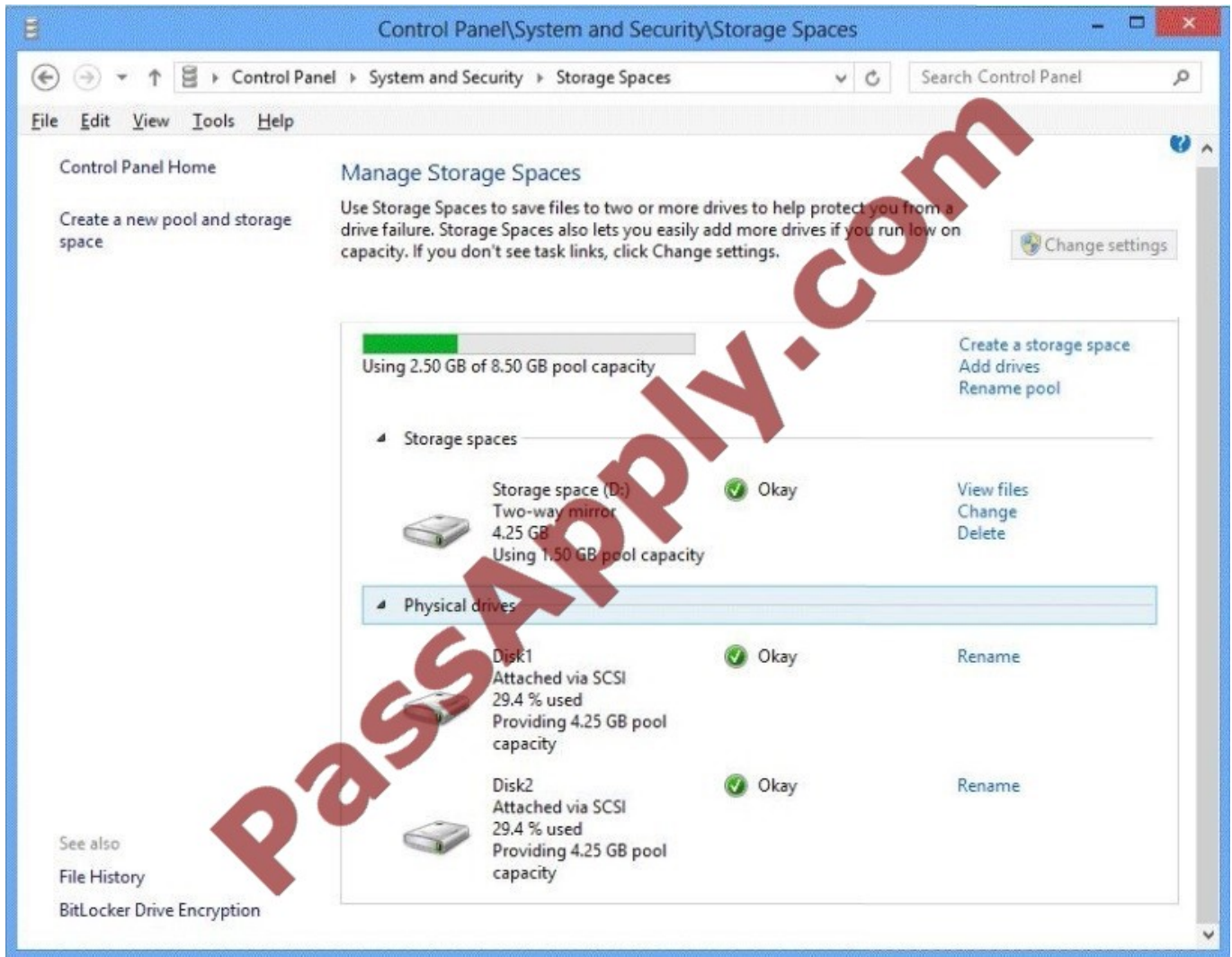
- A. Move the vhd file to a network share, map the network share, and allow a network boot.
- B. Attach the vhd in computer management and add it to the Boot Menu.
- C. Copy the vhd file to the root of C:\ open msconfig, and choose Safe Boot and Alternate Shell.
- D. Copy the vhd file to the root of C:\ run bcdedit and add an entry to the boot options that includes the path to the vhd.

Correct Answer: D

QUESTION 6

You have a Windows 8.1 Enterprise client computer named Computer1.

The Storage Spaces settings of Computer1 are configured as shown in the following exhibit. (Click the Exhibit button.)



You plan to create a three-way mirror storage space in the storage pool and to set the size of the storage space to 50 GB.

You need to identify the minimum number of disks that must be added to the storage pool for the planned mirror.

How many disks should you identify?

- A. 1
- B. 3
- C. 4
- D. 5

Correct Answer: B

QUESTION 7

You have client Windows 8.1 Enterprise computers.



Your company purchases a subscription to Windows Intune.

You deploy the Windows Intune agent to all of the computers.

You need to uninstall a Microsoft update that was installed before the Windows Intune agent was installed. The solution must minimize administrative effort.

What should you do?

- A. Create a Group Policy object (GPO) that runs wusa.exe by using a startup script.
- B. From Windows Intune, create a new automatic approval rule.
- C. From Windows Intune, click New updates to approve.
- D. Create a Group Policy object (GPO) that runs msixexec.exe by using a startup script.

Correct Answer: C

Explanation: <http://technet.microsoft.com/en-us/library/hh456367.aspx> http://www.microsoft.com/en-us/server-cloud/products/windows-intune/support.aspx#fbid=L_-Vds59NJT <http://support.microsoft.com/kb/934307> <http://www.microsoft.com/resources/documentation/windows/xp/all/proddocs/en-us/msiexec.mspx?mfr=true>

QUESTION 8

You are a system administrator for a local accounting firm. Your company uses Windows 8.1 Pro desktop computers. All computers have a secondary D: drive.

You want to enable File History for all your users. You create the folder structure D:

\Backup\File History on all user computers. You launch the File History application and verify that it is turned on. Next, you click Select drive in Configure File History Settings. However, under Copy Files to: you get the message, "No

usable

drives were found."

You need to successfully configure file history.

- What should you do?
- A. Share the File History folder.
 - B. Grant NTFS rights to the File History folder.
 - C. Use a network drive for file history.
 - D. Verify that your local drive has enough free space.

Correct Answer: C

Explanation: <http://windows.microsoft.com/en-us/windows-8/set-drive-file-history> Set up a drive for File History Before you start using File History to back up your files, you need to first select where your backups are saved. You can select an externally connected drive, such as a USB drive, or you can save to a drive on a network. There are other choices, but these two provide the best options to help protect your files against a crash or other PC problems.



QUESTION 9

You have a Windows 8.1 Pro desktop computer and a Windows RT 8.1 mobile device. You sign in to the computer and the device by using the same Microsoft account.

You discover that the settings are not being synchronized between the Windows 8.1 computer and the Windows RT 8.1 device,

You need to ensure that the settings are synchronized.

What should you do first?

- A. Enable the Trusted Hosts Group Policy setting.
- B. Enable the Configure Default consent Group Policy setting.
- C. From the PC settings page, click Trust this PC.
- D. From the PC settings page, modify the Privacy settings,

Correct Answer: C

Explanation: <http://www.technospot.net/blogs/sync-windows-8-user-settings-pc-tablet-mobile-windows-live-id/>
<http://windows.microsoft.com/en-US/windows-8/sync-settings-pcs>

QUESTION 10

Your company has client computers that run either Windows XP or Windows 7.

You plan to deploy Windows 8.1 Enterprise to all of the computers.

You plan to deploy the applications shown in the following table.

Application name	Description
App1	A line-of-business (LOB) application designed for Windows XP that does not run natively on Windows 8.1. No vendor updates are available. The application must be available to users when the users are disconnected from the corporate network.
App2	A Windows Store app that must be made available to users before Windows 8.1 is installed on the computers.
App3	An existing line-of-business (LOB) desktop application. Occasionally, certain features will be used by some users after App3.1 is deployed as well. App3 must run locally.
App3.1	A new version of App3 that provides additional functionality, but removes some of the features of App3. App3.1 and App3 use some of the same registry keys, which cause the applications to be incompatible. App3.1 must run locally.

You need to recommend the appropriate technology to deploy each application. Each solution must ensure that the users can access all of the applications. The solution that uses the least amount of system resources must be selected,



whenever possible.

Which technology should you recommend for each application? (To answer, select the appropriate technology for each application in the answer area.)

Hot Area:

Answer Area

App1: 

- Client Hyper-V
- Microsoft Application Virtualization (App-V)
- Virtual Desktop Infrastructure (VDI)
- Windows XP Mode

App2: 

- Client Hyper-V
- Microsoft Application Virtualization (App-V)
- Virtual Desktop Infrastructure (VDI)
- Windows XP Mode

App3: 

- Client Hyper-V
- Microsoft Application Virtualization (App-V)
- Virtual Desktop Infrastructure (VDI)
- Windows XP Mode

App3.1: 

- Client Hyper-V
- Microsoft Application Virtualization (App-V)
- Virtual Desktop Infrastructure (VDI)
- Windows XP Mode

Correct Answer:



Answer Area

App1:

- Client Hyper-V
- Microsoft Application Virtualization (App-V)
- Virtual Desktop Infrastructure (VDI)
- Windows XP Mode

App2:

- Client Hyper-V
- Microsoft Application Virtualization (App-V)
- Virtual Desktop Infrastructure (VDI)
- Windows XP Mode

App3:

- Client Hyper-V
- Microsoft Application Virtualization (App-V)
- Virtual Desktop Infrastructure (VDI)
- Windows XP Mode

App3.1:

- Client Hyper-V
- Microsoft Application Virtualization (App-V)
- Virtual Desktop Infrastructure (VDI)
- Windows XP Mode

QUESTION 11

You support Windows 8.1 Enterprise computers that are members of a workgroup.

Users are able to download and install any app from Windows Store. You need to ensure that only approved apps can be installed from Windows Store.

What should you do?

- A. Configure a Software Restriction Policy Certificate rule.
- B. Configure an AppLocker Publisher rule.
- C. Enable Windows SmartScreen and select the Get administrator approval before running an unrecognized app from the Internet option.
- D. Configure an AppLocker Packaged app rule.

Correct Answer: D

QUESTION 12

A company has a Microsoft Software Assurance with Volume Licensing agreement. All client computers run Windows 8.1.



An employee updates a device driver on his computer and then restarts the computer. Windows does not start successfully. You establish that the updated driver is the cause of the problem.

You need to prevent the updated driver from running on startup, without impacting other drivers or personal data.

What should you do?

- A. Use the Windows 8.1 PC Reset feature.
- B. Start the computer with the Diagnostic and Recovery Toolset and configure the driver options.
- C. Use the File History feature.
- D. Reset the computer to the manufacturer's system image.

Correct Answer: B

[Latest 70-692 Dumps](#)

[70-692 PDF Dumps](#)

[70-692 Exam Questions](#)



To Read the [Whole Q&As](#), please purchase the [Complete Version](#) from [Our website](#).

Try our product !

100% Guaranteed Success
100% Money Back Guarantee
365 Days Free Update
Instant Download After Purchase
24x7 Customer Support
Average 99.9% Success Rate
More than 800,000 Satisfied Customers Worldwide
Multi-Platform capabilities - [Windows](#), [Mac](#), [Android](#), [iPhone](#), [iPod](#), [iPad](#), [Kindle](#)

We provide exam PDF and VCE of Cisco, Microsoft, IBM, CompTIA, Oracle and other IT Certifications. You can view Vendor list of All Certification Exams offered:

<https://www.passapply.com/allproducts>

Need Help

Please provide as much detail as possible so we can best assist you.
To update a previously submitted ticket:



 <p>One Year Free Update Free update is available within One Year after your purchase. After One Year, you will get 50% discounts for updating. And we are proud to boast a 24/7 efficient Customer Support system via Email.</p>	 <p>Money Back Guarantee To ensure that you are spending on quality products, we provide 100% money back guarantee for 30 days from the date of purchase.</p>	 <p>Security & Privacy We respect customer privacy. We use McAfee's security service to provide you with utmost security for your personal information & peace of mind.</p>
---	---	--

Any charges made through this site will appear as Global Simulators Limited.
All trademarks are the property of their respective owners.
Copyright © passapply, All Rights Reserved.