



70-688^{Q&As}

Supporting Windows 8.1

Pass Microsoft 70-688 Exam with 100% Guarantee

Free Download Real Questions & Answers **PDF** and **VCE** file from:

<https://www.passapply.com/70-688.html>

100% Passing Guarantee
100% Money Back Assurance

Following Questions and Answers are all new published by Microsoft
Official Exam Center

-  **Instant Download** After Purchase
-  **100% Money Back** Guarantee
-  **365 Days** Free Update
-  **800,000+** Satisfied Customers





QUESTION 1

You administer a company network that includes computers that run Windows 8 Enterprise in an Active Directory domain. The company has purchased a subscription to Windows Intune.

Corporate security policy requires that computers in the accounting department have file and program activity logged. A user in the accounting department uses a computer that is managed by Windows Intune.

You need to ensure that file and program activity is always monitored on this computer.

What should you do?

- A. Create a new Windows Firewall Setting policy in the Windows Intune Admin Console.
- B. In the Windows Intune Admin Console, create a new Windows Intune Agent Settings policy that uses the recommended settings.
- C. Create a new Windows Intune Mobile Security policy in the Windows Intune Admin Console.
- D. Create and deploy a custom policy in the Windows Intune Center Settings template.

Correct Answer: B

Explanation: Configure Your Windows Intune Environment

Reference:

<http://technet.microsoft.com/en-us/library/hh441722.aspx> To set up the default Windows Intune Policies:

Open the Windows Intune administrator console.

In the workspace shortcuts pane, click the Policy icon.

Under Tasks, click Add Policy.

In the Create a New Policy dialog box, the following policy templates are displayed in the list of templates in the left pane:

Mobile Device Security Policy

Windows Firewall Settings

Windows Intune Agent Settings

Windows Intune Center Settings

QUESTION 2

You administer Windows 8.1 Pro computers. Your company uses credit card readers that require a custom driver supplied by the manufacturer. The readers frequently are moved from computer to computer.

Your company recently purchased five new Windows 8.1 Pro computers. You want the required drivers to be installed automatically and silently when users connect the readers to the new computers.



You need to pre-stage the credit card reader driver on the new computers.

What should you do?

- A. Run the dism.exe utility. Copy the driver files to the C:\Windows\System32\drivers folder in the WIM image.
- B. Add a Registry key with a path to a network shared folder that has the driver installation files.
- C. Run the pnputil.exe utility. Specify the credit card reader driver.
- D. Add a Registry key with a path to a local folder on every computer. Copy the driver installation files to the folder.

Correct Answer: C

Explanation: Pnputil.exe is a command line utility that you can use to manage the driver store. You can use Pnputil to add driver packages, remove driver packages, and list driver packages that are in the store.

To attempt to stage a package. At the command prompt running with elevated permissions, type the command (example):

```
pnputil.exe -a toastpkg.inf
```

Reference: Pnputil

<https://technet.microsoft.com/en-us/library/ff800798.aspx>

QUESTION 3

At work, you use a desktop computer that runs Windows 8 Pro. At home, you use a laptop that runs Windows 8. You use the same Microsoft account to log on to both computers.

You want to use the same settings for both computers.

You need to ensure that all computer settings, including stored passwords, are synced between the computers.

What should you do?

- A. Add both computers to the same Active Directory domain.
- B. Use the same local accounts for both computers.
- C. Install SkyDrive for Windows on both computers.
- D. Designate both computers as trusted PCs.

Correct Answer: D

*

Microsoft has integrated its cloud computing features into much of Windows 8. The focal point of that integration is the soon to be re-branded Windows Live service--use a Windows Live account as your login, and you can synchronize much of the information associated with your account to all your Windows devices through the cloud. Or at least, that's the goal.

*



Setting up for synchronization starts when you configure your user account. At installation, Windows 8 prompts you for a Windows Live account. You can create a new Live account or use an existing one for your user credentials, or choose to bypass this and set up a local-only user account--but you won't be able to leverage the synchronization features if you do. You can also opt out later and switch to a local-only account through Windows 8's settings menu.

When you set up your user account--either at install time or from the PC settings menu afterward--you'll be prompted to either use an existing Live account email address or enter a new one <http://technet.microsoft.com/en-us/windowsserver/bb250462%28v=vs.71%29.aspx>

QUESTION 4

Your network contains a web server named testweb.contoso.com that is used for testing.

You have a Windows 8.1 Pro laptop.

After a network administrator changes the IP address of the web server, you discover that you can no longer connect to testweb.contoso.com.

You need to resolve immediately the issue that prevents you from connecting to the server.

Which command line tool should you run?

- A. Clear-DnsClientCache
- B. Set-DnsClientGlobalSetting
- C. Set-DnsClient
- D. Nbtstat

Correct Answer: C

Explanation: Set-DnsClient - Sets the interface specific DNS client configurations on the computer. Reference: <http://technet.microsoft.com/en-us/library/jj590776.aspx> <http://technet.microsoft.com/en-us/library/jj590773.aspx> <http://technet.microsoft.com/en-us/library/jj590767.aspx> <http://www.microsoft.com/resources/documentation/windows/xp/all/proddocs/en-us/nbtstat.mspx?mfr=true>

QUESTION 5

You administer laptops that run Windows 8 Enterprise. The laptops are members of an Active Directory domain and are configured with IPv6 disabled.

Some users require access to the internal company database servers while traveling.

You need to configure the requested network connection to the database servers.

What should you configure on the laptops?

- A. A DirectAccess connection to the company network
- B. A virtual private network (VPN) connection to the company network
- C. A metered network connection



D. Out of band management

Correct Answer: B

DirectAccess cannot be used in this case as IPv6 is disabled and DirectAccess requires IPv6 and IPsec. IPv6 is the cornerstone of DirectAccess communications. The DirectAccess client always uses IPv6 to communicate with the DirectAccess server. The DirectAccess server will then forward these connections to IPv6-enabled hosts on the corpnet. The corpnet can use native IPv6 infrastructure

(where the routers, switches, operating systems, and applications are all IPv6 capable) or it can use IPv6 transition technologies to connect to IPv6 resources on the corpnet.

Reference:

<http://www.techrepublic.com/blog/10things/10-things-you-should-know-about-directaccess/1371>

QUESTION 6

You administer desktop computers that run Windows 8 Enterprise and are members of an Active Directory domain.

A new security policy states that all traffic between computers in the research department must be encrypted and authenticated by using Kerberos V5.

You need to configure the requested traffic authentication settings by using Windows Firewall with Advanced Settings.

Which three actions should you perform in sequence? (To answer, move the appropriate actions from the list of actions to the answer area and arrange them in the correct order.)

Select and Place:

	Answer Area
Select Require authentication for inbound and outbound connection , and then for authentication method, select Computer (Kerberos V5) .	
Select Allow on app or feature through Windows Firewall .	
Click to expand Inbound Rule , and then select New Rule .	
Select the rule type Isolation , and then add the IP addresses of the research department computers.	
Click to expand Outbound Rule , and then select New Rule .	
Click to expand Connection Security Rule , and then select New Rule .	
Select the rule type Server-to-Server , and then add the IP addresses of the research department computers.	



Correct Answer:

	Answer Area
	Click to expand Connection Security Rule , and then select New Rule .
Select Allow on app or feature through Windows Firewall .	Select the rule type Isolation , and then add the IP addresses of the research department computers.
Click to expand Inbound Rule , and then select New Rule .	Select Require authentication for inbound and outbound connection , and then for authentication method, select Computer (Kerberos V5) .
Click to expand Outbound Rule , and then select New Rule .	
Select the rule type Server-to-Server , and then add the IP addresses of the research department computers.	

Note:

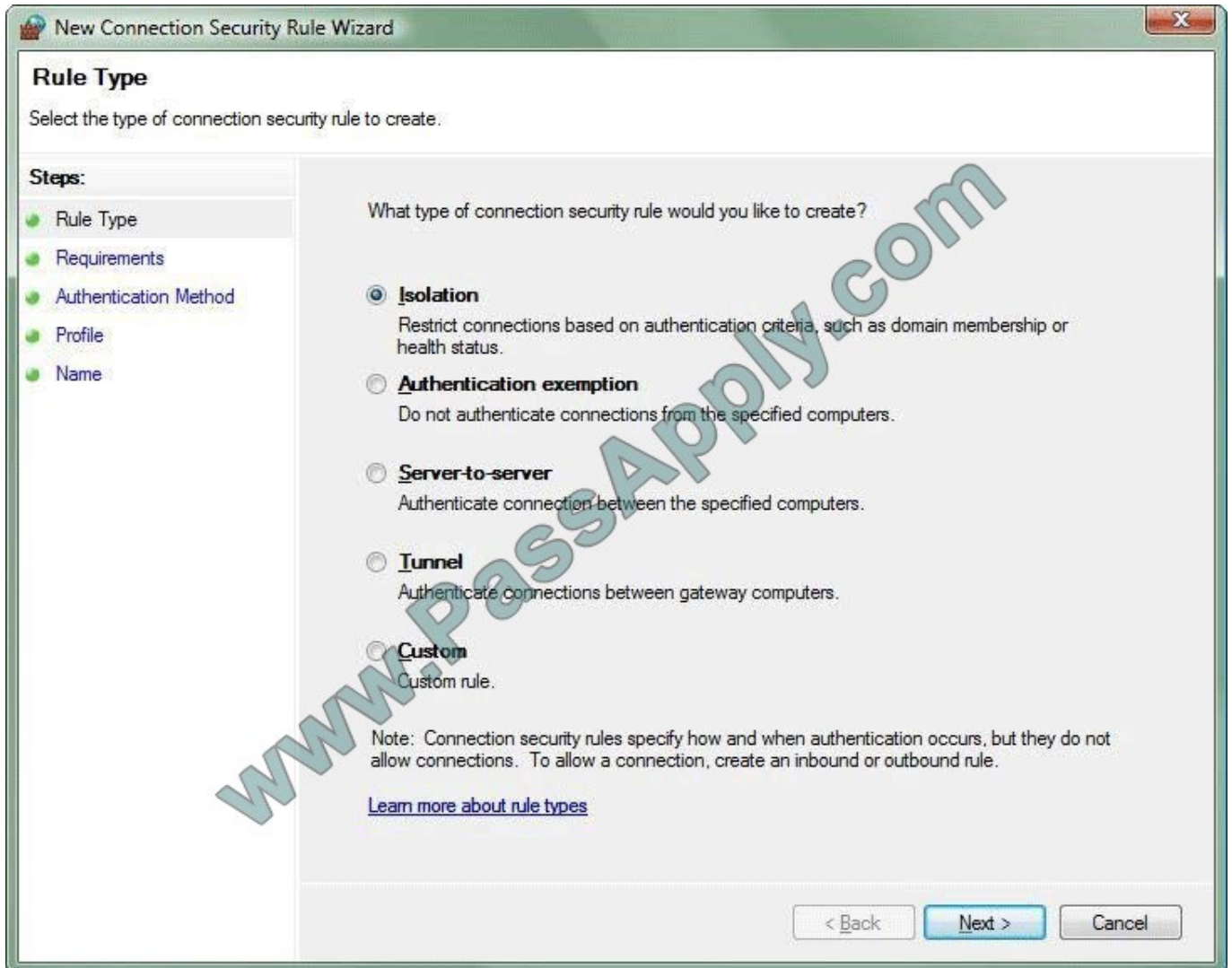
A connection security rule forces two peer computers to authenticate before they can establish a connection and to secure information transmitted between the two computers. Windows Firewall

with Advanced Security uses IPsec to enforce these rules.

To create a connection security rule

1. In Windows Firewall with Advanced Security, in the console tree, click Connection Security Rules.
2. In the Actions list, click New Rule.

The Rule Type page, shown in the Figure below, allows you to select the type of rule you want to create. Select a type, and use the wizard to configure the new rule according to the information



in the following sections.

Isolation An isolation rule isolates computers by restricting inbound connections based on credentials, such as domain membership or compliance with policies that define the required software and system configurations. Isolation rules allow you to implement a server or domain isolation strategy. When you create an isolation rule, you will see the following wizard pages:

* **Requirements.** You can choose when authentication is required:

/Request authentication for inbound and outbound connections

/Require authentication for inbound connections and request authentication for outbound connections

/Require authentication for inbound and outbound connections

* **Authentication Method.** You can select from the following authentication methods:

Default. This selection uses the current computer default selections specified on the IPsec Settings tab of the Windows Firewall Properties page.

Computer and user (Kerberos V5). This method uses both computer- and user-based Kerberos V5 authentication to restrict connections to domain-joined users and computers. **User**



authentication, and therefore this method, is compatible only with computers running Windows Vista and later.

Computer (Kerberos V5). This method uses Kerberos V5 authentication to restrict connections to domain-joined computers. This method is compatible with computers running Windows 2000 or

later.

Advanced. This setting allows you to designate multiple authentication methods, such as computer certificate, NTLMv2, and preshared key.

* Profile. Choose the profiles (Domain, Public, and Private) to which the rule applies.

* Name. Name the rule and type an optional description.

Reference: Creating Connection Security Rules

<http://technet.microsoft.com/en-us/library/cc772017.aspx>

QUESTION 7

Your company has several Windows RT 8.1 devices. The devices connect to Exchange Online in Microsoft Office 365 and to Windows Intune for device management.

Setting name	Local device setting	Windows Intune setting	Exchange Online setting
Require a password to unlock mobile devices	Not configured	Yes	No
Required password type	Not configured	Alphanumeric	Numeric
Minimum password length	Not configured	10	12
Allow simple passwords	Not configured	No	Yes
Minutes of inactivity before device screen is locked	Not configured	10	5

The security policies of Office 365 and Windows Intune are configured as shown in the following table.

You need to identify the effective settings on the Windows RT devices.

What should you identify? (To answer, select the appropriate effective configuration for each setting in the answer area.)



Answer Area

Require a password to unlock mobile devices:

Required password type:

Minimum password length:

Allow simple passwords:

Minutes of inactivity before device screen is locked:

Hot Area:

Answer Area

Require a password to unlock mobile devices:
Yes
No
Not configured

Required password type:
Alphanumeric
Numeric
Not configured

Minimum password length:
10
12
Not configured

Allow simple passwords:
Yes
No
Not configured

Minutes of inactivity before device screen is locked:
5
15
Not configured

Correct Answer:



Answer Area

Require a password to unlock mobile devices:

Yes
 No
 Not configured

Required password type:

Alphanumeric
 Numeric
 Not configured

Minimum password length:

Allow simple passwords:

Yes
 No
 Not configured

Minutes of inactivity before device screen is locked:

<http://technet.microsoft.com/en-us/library/dn283963.aspx>

QUESTION 8

Hardware build name	Operating system	USB port	Processor	Memory	Firmware
Hardware 1	Windows XP Professional	USB 3.0	64-bit	8 GB	BIOS
Hardware 2	Windows 7 Enterprise	USB 3.0	64-bit	8 GB	UEFI
Hardware 3	Windows 7 Enterprise	USB 3.0	32-bit	1 GB	BIOS
Hardware 4	Windows 7 Enterprise	USB 2.0	32-bit	4 GB	UEFI
Hardware 5	Windows 7 Enterprise	USB 2.0	64-bit	2 GB	UEFI



Your company has five hardware builds for client computers. The hardware builds are configured as shown in the following table.

You plan to provide some users with Windows To Go disks that contain a corporate image of the 64-bit version of Windows 8.1 Enterprise and several line-of-business (LOB) applications.

In the table below, identify whether the hardware build is compatible or incompatible with the Windows To Go disks. Make only one selection in each row. Each correct selection is worth one point.

.....

Answer Area

Computer build	Compatible	Incompatible
Hardware1	<input type="radio"/>	<input type="radio"/>
Hardware2	<input type="radio"/>	<input type="radio"/>
Hardware3	<input type="radio"/>	<input type="radio"/>
Hardware4	<input type="radio"/>	<input type="radio"/>
Hardware5	<input type="radio"/>	<input type="radio"/>

Hot Area:

.....

Answer Area

Computer build	Compatible	Incompatible
Hardware1	<input type="checkbox"/>	<input type="checkbox"/>
Hardware2	<input type="checkbox"/>	<input type="checkbox"/>
Hardware3	<input type="checkbox"/>	<input type="checkbox"/>
Hardware4	<input type="checkbox"/>	<input type="checkbox"/>
Hardware5	<input type="checkbox"/>	<input type="checkbox"/>

Correct Answer:



Answer Area

Computer build	Compatible	Incompatible
Hardware1	<input type="checkbox"/>	<input checked="" type="checkbox"/>
Hardware2	<input checked="" type="checkbox"/>	<input type="checkbox"/>
Hardware3	<input type="checkbox"/>	<input checked="" type="checkbox"/>
Hardware4	<input type="checkbox"/>	<input checked="" type="checkbox"/>
Hardware5	<input checked="" type="checkbox"/>	<input type="checkbox"/>

Hardware1, Hardware2, hardware5: Works fine. Hardware3, Hardware4: A 64-bit processor is required.

* When using a PC as a host, only hardware certified for use with either Windows 7 or Windows 8 operating systems will work well with Windows To Go.

* Windows To Go is fully supported on either USB 2.0 ports or USB 3.0 ports on PC's certified for Windows 7 or Windows 8.

* Why does my Windows To Go drive have an MBR disk format with a FAT32 system partition?

This is done to allow Windows To Go to boot from UEFI and legacy systems.

* Windows 8.1 Enterprise: System Requirements

Windows 8.1 Enterprise works great on the same hardware that powers Windows 8:

Processor: 1 gigahertz (GHz) or faster

RAM: 1 gigabyte (GB) (32-bit) or 2 GB (64-bit)

QUESTION 9

Your network contains an Active Directory domain named contoso.com. All client computers in the domain run Windows 8.1 Pro. All domain users have roaming user profiles.

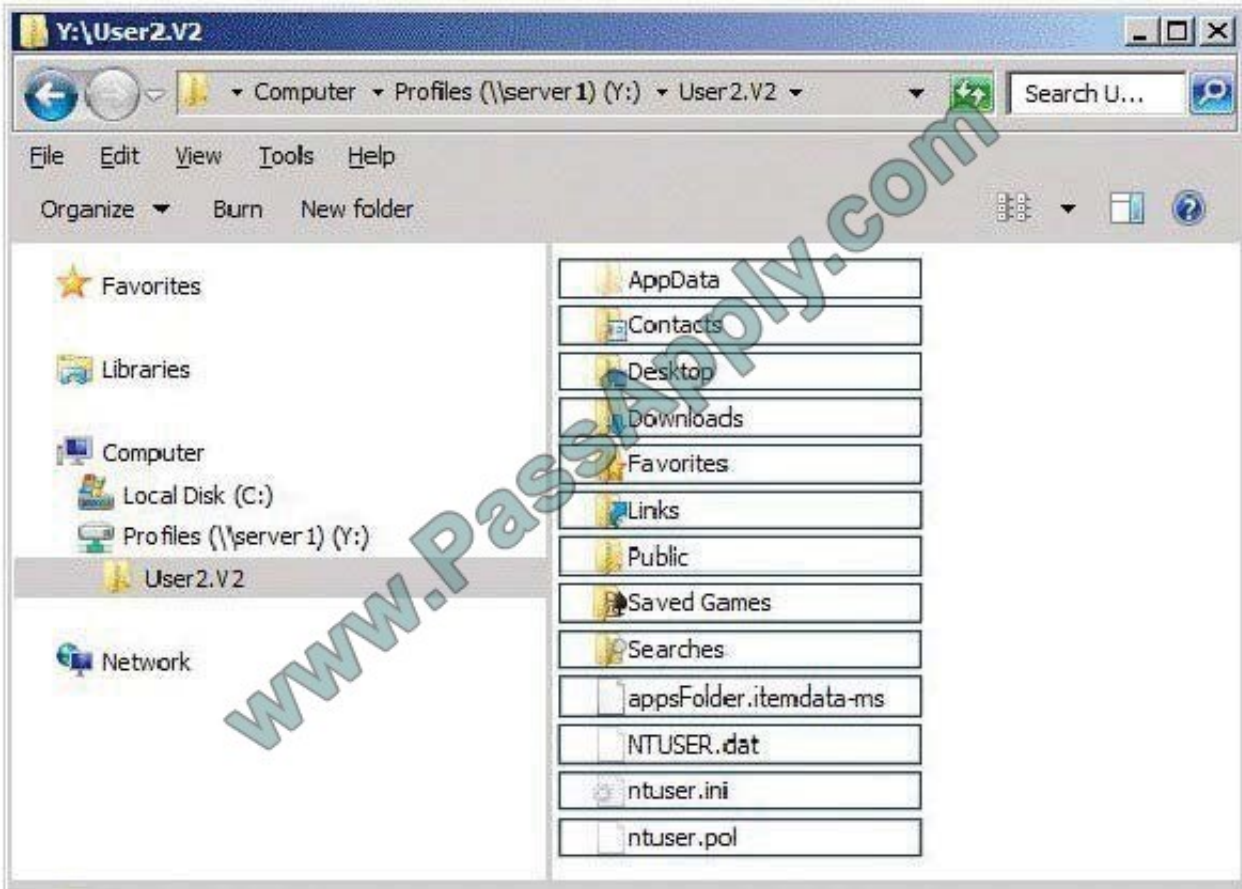
You need to prevent a user named User2 from being able to save changes to his roaming user profile.

Which file or folder should you modify? (To answer, select the appropriate file or folder in the answer area.)

Hot Area:



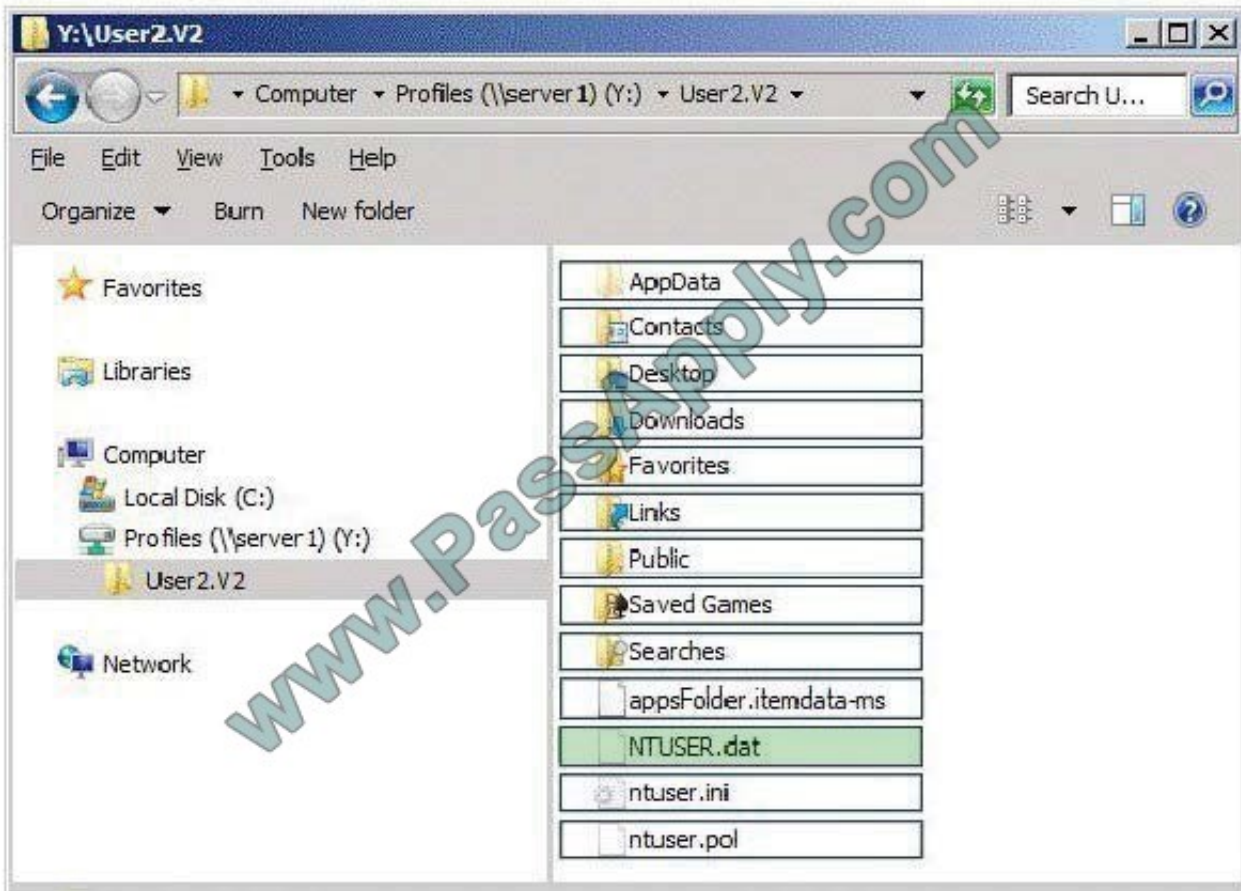
Answer Area



Correct Answer:



Answer Area



An archive file on client computers that is updated each time the Administrative Templates CSE sets a policy setting. As processing completes, an Ntuser.pol containing the history of applied registry based policies in the Group Policy managed policies tree is written to the root of the user's profile containing user policy settings and to the "all users" profile containing computer policy settings.(%Allusersprofile%\ntuser.pol for computer policy and %userprofile%\ntuser.pol for user policy.)

<http://technet.microsoft.com/en-us/library/cc758189%28v=WS.10%29.aspx>

The NTUSER.DAT file on a Microsoft Windows computer is a registry file that stores the software and operating system settings for each user profile.

NTUSER.INI is a hidden file in Documents and Settings\ There is one for each user account on the machine. and is used to set up the user roaming profile components.

The ntuser.ini file is used to set up the user roaming profile components that are not copied to the server.

QUESTION 10

You support computers that run Windows 8 Enterprise. Your company protects all laptops by using the BitLocker Network Unlock feature. Some employees work from home.

You need to ensure that employees can log on to their laptops when they work from home. What should you do?

A. Provide employees their BitLocker PINs.



- B. Ensure that the Trusted Platform Module (TPM) chips in the laptops are version 1.2 or greater.
- C. Enable BitLocker To Go.
- D. Have users run the Manage-bde.exe -unlock command before they disconnect from the company network.

Correct Answer: A

In addition to the option of creating a startup key, you have the option of creating a startup personal identification number (PIN). You can create either the startup key or the startup PIN, but not both. The startup PIN can be any number that you choose from 4 to 20 digits in length. The PIN is stored on your computer. You will have to type the PIN each time you start the computer. Reference: <http://windows.microsoft.com/en-US/windows-vista/What-is-a-BitLocker-Drive-Encryption-startup-key-or-PIN> <http://support.microsoft.com/kb/2855131>

QUESTION 11

Your network contains Windows 8.1 Enterprise client computers. The computers are members of an Active Directory domain.

Your company purchases a subscription to Windows Intune.

Synchronization between Active Directory and Windows Intune is not configured.

You enroll all of the computers in Windows Intune.

You plan to create groups that contain the computers by using dynamic membership.

You need to identify which criteria you can use to populate the groups dynamically.

Which three criteria should you identify? (Each correct answer presents a complete solution. Choose three.)

- A. organizational unit (OU)
- B. domain
- C. security group
- D. manager
- E. device type

Correct Answer: ABE

Explanation: A device group dynamic membership criteria:

*

(A) Organizational unit (OU): You can specify the OU for computers as membership criteria. OUs cannot be retrieved for mobile devices. The OUs are retrieved directly from the Windows Intune inventory. *(B) Domain: You can specify the domain for a computer as membership criteria. This information is retrieved from the Windows Intune inventory. Domain names cannot be retrieved for mobile devices.

*

(E) Device type: You can specify computers as membership criteria, and if your environment is configured to support



mobile devices, mobile devices. Device type information for computers is retrieved from the Windows Intune inventory. Device type information for mobile devices is retrieved from Exchange.

Reference: Windows Intune, Device and User Group Considerations

QUESTION 12

Your company network supports users at a main office and at a branch office. All of the computers in the branch office run Windows 8.1 Enterprise and are part of an Active Directory domain. There are no plans to deploy any servers in the branch office.

Some branch office users report that it takes a long time to open documents from a file server that is located in the main office.

You need to enable BranchCache on all branch office computers.

What should you do?

- A. In the Group Policy editor, enable BranchCache in Distributed Cache mode on the branch computers.
- B. From PowerShell, run the set-BCCache cmdlet on the branch computers.
- C. In the Group Policy editor, enable BranchCache in Hosted Cache mode on the branch computers.
- D. From PowerShell, run the enable-BCHostedClients cmdlet on the computers.

Correct Answer: A

Explanation: BranchCache, must be enabled on your clients to instruct them which type to use (hosted or distributed cache). The easiest way to configure BranchCache is via Group Policy.

If client computers are configured to use Distributed Cache mode, the cached content is distributed among client computers on the branch office network. No infrastructure or services are required in the branch office beyond client computers

running Windows 8. Incorrect: In hosted cache mode, cached content is maintained on a computer running Windows Server 2008 R2 on the branch office network, but no servers will be used in the branch office.

Reference: Client Configuration

[https://technet.microsoft.com/en-us/library/dd637820\(v=ws.10\).aspx](https://technet.microsoft.com/en-us/library/dd637820(v=ws.10).aspx)

[Latest 70-688 Dumps](#)

[70-688 Study Guide](#)

[70-688 Braindumps](#)



To Read the [Whole Q&As](#), please purchase the [Complete Version](#) from [Our website](#).

Try our product !

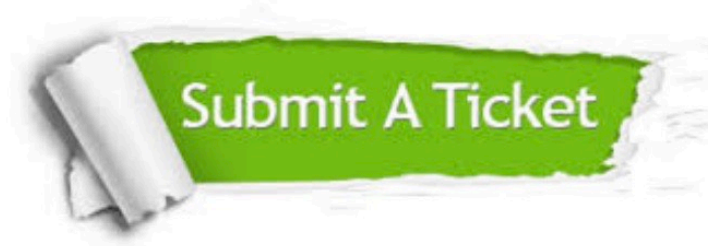
100% Guaranteed Success
100% Money Back Guarantee
365 Days Free Update
Instant Download After Purchase
24x7 Customer Support
Average 99.9% Success Rate
More than 800,000 Satisfied Customers Worldwide
Multi-Platform capabilities - [Windows](#), [Mac](#), [Android](#), [iPhone](#), [iPod](#), [iPad](#), [Kindle](#)

We provide exam PDF and VCE of Cisco, Microsoft, IBM, CompTIA, Oracle and other IT Certifications.
You can view Vendor list of All Certification Exams offered:

<https://www.passapply.com/allproducts>

Need Help

Please provide as much detail as possible so we can best assist you.
To update a previously submitted ticket:



 <p>One Year Free Update Free update is available within One Year after your purchase. After One Year, you will get 50% discounts for updating. And we are proud to boast a 24/7 efficient Customer Support system via Email.</p>	 <p>Money Back Guarantee To ensure that you are spending on quality products, we provide 100% money back guarantee for 30 days from the date of purchase.</p>	 <p>Security & Privacy We respect customer privacy. We use McAfee's security service to provide you with utmost security for your personal information & peace of mind.</p>
---	---	--

Any charges made through this site will appear as Global Simulators Limited.
All trademarks are the property of their respective owners.
Copyright © passapply, All Rights Reserved.