



70-687^{Q&As}

Configuring Windows 8.1

Pass Microsoft 70-687 Exam with 100% Guarantee

Free Download Real Questions & Answers **PDF** and **VCE** file from:

<https://www.passapply.com/70-687.html>

100% Passing Guarantee
100% Money Back Assurance

Following Questions and Answers are all new published by Microsoft
Official Exam Center

-  **Instant Download** After Purchase
-  **100% Money Back** Guarantee
-  **365 Days** Free Update
-  **800,000+** Satisfied Customers





QUESTION 1

You administer Windows 8 client computers in your company network.

You deploy an application that requires a specific Windows update to be installed on the computers.

You need to verify that the update is installed on specific computers.

What are two possible ways to achieve this goal? (Each correct answer presents a complete solution. Choose two)

- A. Run The system update readiness tool
- B. Open View updates history
- C. Open the Check for updates applet
- D. Run the DISM command with the /image and /get-packageinfoswiches
- E. Run the DISM command with the /online and /get-packageinfoswiches

Correct Answer: BE

QUESTION 2

A company has an Active Directory Domain Services (AD DS) domain. All client computers run Windows 8.

Portable client computers no longer connect to the corporate wireless network.

You need to ensure that when the corporate wireless network is available, the computers always connect to it automatically.

Which two actions would achieve the goal? (Each correct answer presents a complete solution. Choose two.)

- A. Create a Group Policy object (GPO) to configure a wireless network policy. Link the GPO to the organizational unit that contains the computers.
- B. Configure the corporate wireless network as an unmetered network.
- C. Configure the corporate wireless network as a preferred network.
- D. Manually connect to the corporate wireless network and select the option to connect automatically to that network.

Correct Answer: CD

QUESTION 3

A company has client computers that run Windows 8. Each employee has one client computer at the office. Some employees also have personal computers at home.

The company has applications that run only on Windows 8.



You need to deploy Windows To Go so that employees can run the applications on their home computers.

Which two command-line tools should you use? (Each correct answer presents part of the solution. Choose two.)

- A. isoburn
- B. BdeHdCfg
- C. ImageX
- D. bcd boot

Correct Answer: CD

If you get DISM as an additional option in this question, I would select DISM. DISM is already integrated in the Windows 8 OS and it is the newer feature than ImageX. To use ImageX we have to install Windows 8 AIK first.

```
Administrator: C:\Windows\system32\cmd.exe - imagex /apply D:\sources\insta...
DISKPART> select partition 1
Partition 1 is now the selected partition.
DISKPART> delete partition
DiskPart successfully deleted the selected partition.
DISKPART> list partition
There are no partitions on this disk to show.
DISKPART> create partition primary
DiskPart succeeded in creating the specified partition.
DISKPART> format fs=ntfs quick
100 percent completed
DiskPart successfully formatted the volume.
DISKPART> active
DiskPart marked the current partition as active.
DISKPART> exit
Leaving DiskPart...
C:\Windows\system32>cd c:\
```



```
Administrator: C:\Windows\system32\cmd.exe
c:\Users\gborn\Desktop>imageX /apply D:\sources\install.win 1 P:\
ImageX Tool for Windows
Copyright (C) Microsoft Corp. All rights reserved.
Version: 6.1.7600.16385

[ 100% ] Applying progress
Successfully applied image.
[ 4% ] Applying progress: 2:19:53 hrs remaining
Total elapsed time: 181 min 46 sec

c:\Users\gborn\Desktop>bcdboot f:\windows /s f: /f All
Boot files successfully created.
c:\Users\gborn\Desktop>
```

QUESTION 4

A company has 100 client computers that run Windows 8.

You need to assign static IPv6 addresses to the client computers.

Which Windows Powershellcmdlet should you run?

- A. Set-NetTCPSetting
- B. Set-NetIPInterface
- C. Set-NetIPv6Protocol
- D. set-NetIPAddress

Correct Answer: D

Modifies IP address configuration properties of an existing IP address

QUESTION 5

You are a desktop engineer for a small company. Your sales associates currently use Windows 7 computers that run Windows XP Mode for a legacy business application.

You are deploying new computers for your sales associates due to life cycle management.

You have the following requirements:

The new computers must run Windows 8.1 and have Hyper-V installed. The Windows XP Virtual Machines (VM) should



be isolated from the host machine on your network and from other VMs.

You need to create a virtual switch to meet these requirements. Which type of switch should you use?

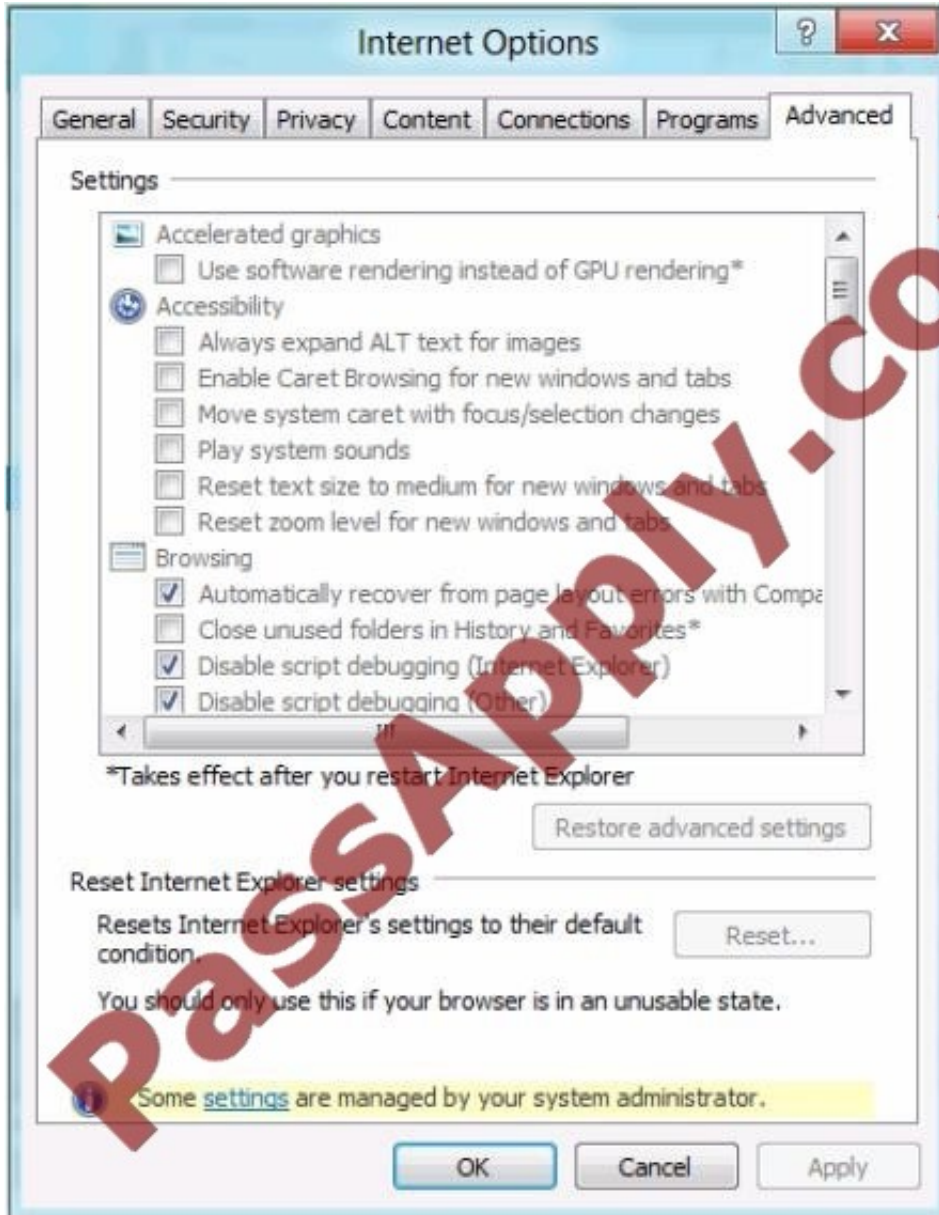
- A. Private switch
- B. External switch
- C. Distributed switch
- D. Internal switch

Correct Answer: C

QUESTION 6

You are troubleshooting a Windows 8.1 computer. The computer is not joined to a domain.

You are unable to change any of the advanced Internet options, which are shown in the Advanced Internet Options exhibit. (Click the Exhibit button.)



You need to ensure that you can change the advanced Internet options. What should you do?

- A. Use the Group Policy Object Editor.
- B. Use the Internet Explorer Administration Kit (IEAK).
- C. Run Internet Explorer and use the Settings charm to change options.
- D. Run the iexplore -k command.

Correct Answer: A

QUESTION 7

A company has an Active Directory Domain Services (AD DS) domain. All client computers run Windows Vista and are



members of the domain. A Group Policy object (GPO) configuring a software restriction policy is implemented in the domain to block a specific application.

You upgrade a computer to Windows 8 and implement a GPO that configures an AppLocker rule in the domain. The blocked application runs on the Windows 8 computer but not on the Windows Vista computers.

You need to ensure that the application is blocked from running on all computers and the AppLocker rule is applied to the computers in the domain.

What should you do?

- A. Add the blocked application as an additional AppLocker rule to the GPO that configures AppLocker.
- B. Run the Get-AppLockerPolicy Windows PowerShell cmdlet.
- C. Run the Set-ExecutionPolicy Windows PowerShell cmdlet.
- D. Configure the software restriction policy as a local policy on the Windows 8 computer.
- E. Add the blocked application as a software restriction policy to the GPO that configures AppLocker.

Correct Answer: A

QUESTION 8

A company has lab computers that run Windows 8. On all lab computers, Internet Explorer has the Display intranet sites in Compatibility View option enabled and the Download updated compatibility lists from Microsoft option disabled. All lab

computers access only internal corporate websites.

A corporate website was designed for a previous version of Internet Explorer. When viewed on the lab computers, menus and images on the website are displayed out of place.

You need to ensure that all corporate websites display correctly on the lab computers.

What should you do?

- A. Enable the Display all websites in Compatibility View option.
- B. Manually add the corporate website to the compatibility view settings.
- C. Manually download an updated compatibility list from Microsoft.
- D. Disable the Display intranet sites in Compatibility View option.

Correct Answer: B

Fix site display problems with Compatibility View Sometimes websites don't look like you expect them to?images might not appear, menus might be out of place, and text could be jumbled together. This might be caused by a compatibility problem between Internet Explorer and the site you're on. Sometimes this can be fixed by adding the site to your Compatibility View list.



QUESTION 9

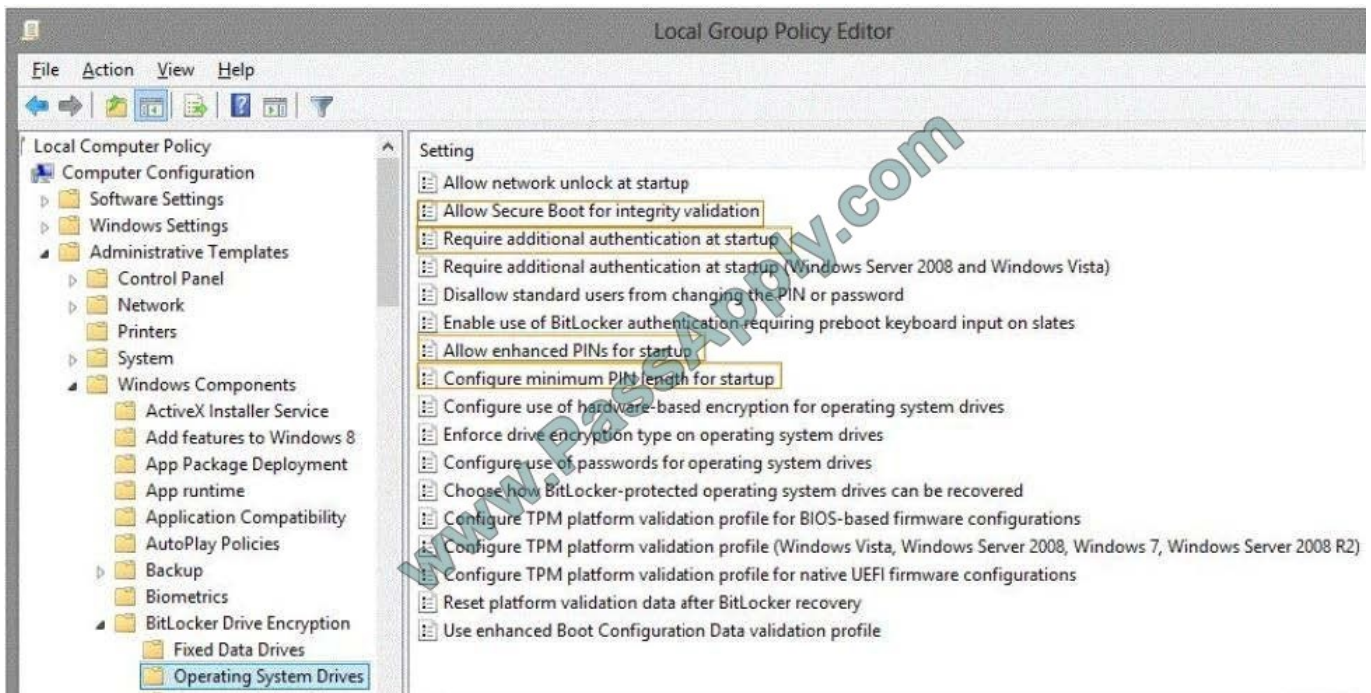
You administer Windows 8 computers in your company network. All computers include Windows 8 compatible Trusted Platform Module (TPM).

You configure a computer that will run a credit card processing application.

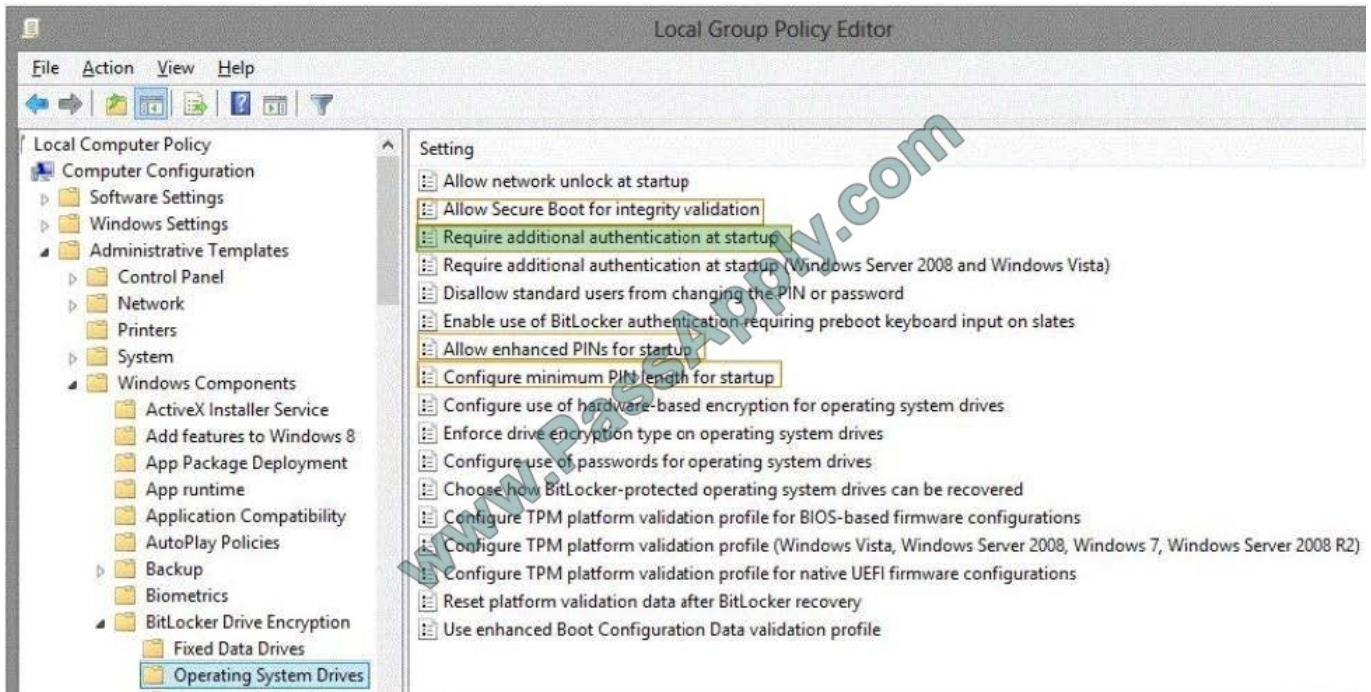
You need to ensure that the computer requires a user to enter a PIN code when starting the computer.

Which policy should you configure? (To answer, select the appropriate policy in the answer area.)

Hot Area:



Correct Answer:



QUESTION 10

Employees are permitted to bring personally owned portable computers that run Windows 8 to the office. They are permitted to install corporate applications by using the management infrastructure agent and access corporate email by using

Windows Mail.

An employee's personally owned portable computer is stolen.

You need to protect the corporate applications and email messages on the computer.

Which two actions should you perform? (Each correct answer presents part of the solution. Choose two.)

- A. Prevent the computer from connecting to the corporate wireless network.
- B. Disconnect the computer from the management infrastructure.
- C. Change the user's password.
- D. Initiate a remote wipe.

Correct Answer: CD

D: A Remote Wipe is the process where a device is selected from a central Microsoft Exchange or management console and chosen to be wiped, for example if the device has been lost by the owner. The Remote Wipe command is then sent to the device via ActiveSync.

For a device such as a Windows Phone, all data is deleted, including email, contacts, calendar for all accounts and other data on the device such as documents and picture.



However, when ActiveSync Remote Wipe is performed against a Windows 8 or Windows RT device, the scope of the wipe is more limited. Only the email, contacts, and calendar for information stored in the built-in Mail application are deleted. Other data on the system is not deleted, including information from the Microsoft Office Outlook client.

QUESTION 11

You administer Windows 8 Pro computers in your company network. The computers are configured to allow remote connections. You attempt to create a Remote Desktop Connection to a computer named Computer1. You receive the following message:

```
\\\'Remote Desktop can\'t connect to the remote computer."
```

You are able to ping Computer1. You discover that Remote Desktop Firewall rules are not present on Computer1.

You need to connect to Computer1 by using Remote Desktop.

Which PowerShell commands should you run on Computer1?

- A. `New-NetFirewallRule -DisplayNameRdpTCPin -localPort 3389 -Protocol TCP`
- B. `Set-NetFirewallRule -Name RemoteSvcAdmin-In-TCP -Enabled True`
- C. `New-NetFirewallRule -DisplayNameRdpTCPout -localPort 3389 -Protocol TCP - Direction Out -Action Allow`
- D. `Set-NetFirewallRule -Name RemoteFwAdmin-In-TCP -Enabled True`

Correct Answer: A

QUESTION 12

A company has Windows 8.1 client computers.

One computer named Computer1 will be used to centralize event logs from other client computers.

You need to configure Computer1 to collect events from other client computers,

What should you do?

- A. Run the `New-EventLogcmdlet`.
- B. Create a source-computer-initiated subscription.
- C. Run the `Get-EventLogcmdlet`.
- D. Create a collector-initiated subscription.

Correct Answer: B

Reference: [http://msdn.microsoft.com/enus/library/windows/desktop/bb870973\(v=vs.85\).aspx](http://msdn.microsoft.com/enus/library/windows/desktop/bb870973(v=vs.85).aspx)



VCE & PDF

PassApply.com

<https://www.passapply.com/70-687.html>

2021 Latest passapply 70-687 PDF and VCE dumps Download

[70-687 PDF Dumps](#)

[70-687 Practice Test](#)

[70-687 Braindumps](#)



To Read the [Whole Q&As](#), please purchase the [Complete Version](#) from [Our website](#).

Try our product !

100% Guaranteed Success
100% Money Back Guarantee
365 Days Free Update
Instant Download After Purchase
24x7 Customer Support
Average 99.9% Success Rate
More than 800,000 Satisfied Customers Worldwide
Multi-Platform capabilities - [Windows](#), [Mac](#), [Android](#), [iPhone](#), [iPod](#), [iPad](#), [Kindle](#)

We provide exam PDF and VCE of Cisco, Microsoft, IBM, CompTIA, Oracle and other IT Certifications. You can view Vendor list of All Certification Exams offered:

<https://www.passapply.com/allproducts>

Need Help

Please provide as much detail as possible so we can best assist you.
To update a previously submitted ticket:



 <p>One Year Free Update Free update is available within One Year after your purchase. After One Year, you will get 50% discounts for updating. And we are proud to boast a 24/7 efficient Customer Support system via Email.</p>	 <p>Money Back Guarantee To ensure that you are spending on quality products, we provide 100% money back guarantee for 30 days from the date of purchase.</p>	 <p>Security & Privacy We respect customer privacy. We use McAfee's security service to provide you with utmost security for your personal information & peace of mind.</p>
---	---	--

Any charges made through this site will appear as Global Simulators Limited.
All trademarks are the property of their respective owners.
Copyright © passapply, All Rights Reserved.