



70-685^{Q&As}

Windows 7, Enterprise Desktop Support Technician

Pass Microsoft 70-685 Exam with 100% Guarantee

Free Download Real Questions & Answers **PDF** and **VCE** file from:

<https://www.passapply.com/70-685.html>

100% Passing Guarantee
100% Money Back Assurance

Following Questions and Answers are all new published by Microsoft
Official Exam Center

-  **Instant Download** After Purchase
-  **100% Money Back** Guarantee
-  **365 Days** Free Update
-  **800,000+** Satisfied Customers





QUESTION 1

Multiple users report that their Windows 7 computers take longer to start than when their computers were first installed.

A help desk technician reports that the problem is related to installed applications. You need to recommend a solution that identifies the applications that run during the startup process.

What should you recommend?

- A. Event Forwarding
- B. MSConfig.exe
- C. Problem Steps Recorder
- D. Reliability Monitor

Correct Answer: B

QUESTION 2

All client computers on your company network run Windows 7 and are members of an

Active Directory Domain Services domain named contoso.com.

Employees access the company intranet site at <http://app.contoso.com>.

The Test team must be able to access a new version of <http://app.contoso.com> before the site is in production.

You need to ensure that the Test team can access the new version of the site without affecting other employees' access to the current site.

What should you do?

- A. Create a DNS record for app.contoso.com that specifies the IP address of the test server.
- B. Create a Windows Firewall rule that blocks access to the IP address of the test server on the employees' computers.
- C. Create a Windows Firewall rule that allows access to the IP address of the test server on the Test team's computers.
- D. Add an entry to the Hosts file that specifies app.contoso.com and the IP address of the test server on the Test team's computers.

Correct Answer: D

QUESTION 3

All client computers on your company network run Windows 7 and are members of an Active Directory Domain Services domain.



All portable computers connect only to the 802.1X-authenticated wireless network. Wireless settings are set through the domain's Group Policy. You discover that new portable computers cannot be joined to the domain.

You need to ensure that new portable computers can be joined to the domain.

What should you do?

- A. Connect the portable computers to the wireless network by using a Bootstrap Profile.
- B. Connect the portable computers to the wireless network by using a Non-Broadcast Profile.
- C. Connect the portable computers to the domain by using smart card authentication.
- D. Connect the portable computers to the domain by using network security key authentication.

Correct Answer: A

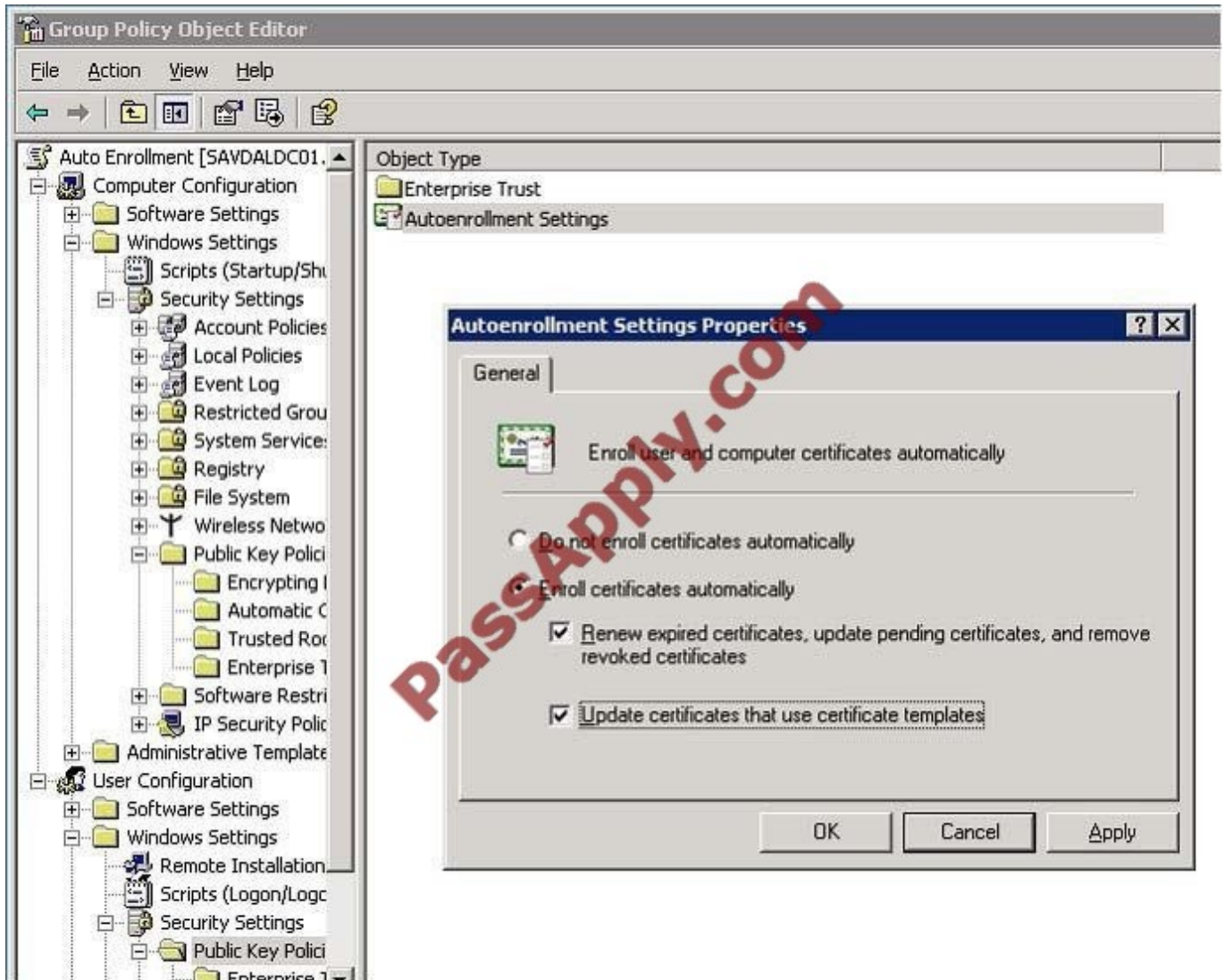
QUESTION 4

The sales users that were part of the VPN server pilot project report that they can no longer establish VPN connections to the internal network. You need to ensure that all authorized users can establish VPN connections to the internal network.

What should you request a domain administrator to do?

- A. Enable auto-renewal for certificates.
- B. Increase the lifetime of the Kerberos user ticket.
- C. Increase the lifetime of the Kerberos service ticket.
- D. Increase the certification validity period for the computer certificate template.

Correct Answer: A



QUESTION 5

All client computers on your company network run Windows 7 and are members of an Active Directory Domain Services (AD DS) domain.

A network administrator changes the IP address of a file server.

Employees are unable to connect to the file server.

You need to ensure that the employees are able to connect to the file server immediately. Which command should you instruct the employees to run?

- A. ipconfig /showdns
- B. ipconfig /registerdns
- C. ipconfig /flushdns
- D. Ipconfig /renew



Correct Answer: C

QUESTION 6

All client computers on your company network run Windows 7. Employees use Windows Internet Explorer 8 to access Web sites. You discover that some computers are infected with malicious software.

Employees are able to access Web sites that might have been compromised by malicious software.

You need to configure the settings in Internet Explorer 8 to prevent malicious software from being installed on the computers.

What should you do?

- A. Configure Popup Blocker.
- B. Configure SmartScreen Filter.
- C. Add the sites to the Local intranet zone.
- D. Add company-approved Web sites to the Compatibility View List.

Correct Answer: B

QUESTION 7

A company has new portable computers running Windows 7.

On one of the computers, the USB mouse cursor does not move. You connect the mouse to another computer, where it works correctly.

You need to recommend possible solutions to the problem. What should you recommend? (Choose all that apply.)

- A. Connect the mouse into a different USB port.
- B. Enable the USB controller in the BIOS.
- C. Disable the computer's trackpad.
- D. Disable Hot Keys on the computer.
- E. Turn on Mouse Keys.

Correct Answer: ABC

QUESTION 8

You install an application named App01 on a client computer running Windows 7. The application automatically appears in the system tray.

You need to establish if the application is slowing down the boot process. You must keep all device drivers functioning.



Which two actions should you perform in sequence?

(To answer, move the appropriate actions from the list of actions to the answer area and arrange them in the correct order.)

Select and Place:

Reboot the computer.

From the **Advanced Boot Options** menu, enable **Safe Mode**.

From the **Advanced Boot Options** menu, enable **Debugging Mode**.

Using msconfig.exe, enable **Diagnostic startup**.

Using msconfig.exe, disable App01 from starting during the boot process.

Using msconfig.exe, disable all applications from starting during the boot process.

Correct Answer:

Using msconfig.exe, disable App01 from starting during the boot process.

Reboot the computer.

QUESTION 9

One of the company's client computers is configured with the company's System Protection settings. That computer becomes unresponsive. You run a system restore on the computer.

The system restore does not restore the computer system settings.



You need to ensure that all future system restores for the computer include system settings.

You reimage the client computer with the company's corporate image.

What should you do next?

- A. Modify the System Protection properties for the C volume
- B. Create a new system restore point
- C. Modify the Shadow Copies properties for the C volume
- D. Create a new critical volume backup

Correct Answer: A

QUESTION 10

When visiting certain websites, users receive a message in Internet Explorer. The message is shown in the exhibit.
(Click the Exhibit button.)



There is a problem with this website's security certificate.

The security certificate presented by this website was issued for a different website's address.

Security certificate problems may indicate an attempt to fool you or intercept any data you send to the server.

We recommend that you close this webpage and do not continue to this website.

Click here to close this webpage.

Continue to this website (not recommended).

You need to ensure that the Internet Explorer settings for all client computers follow company requirements.

What should you modify in Group Policy?

- A. Enable the Internet Explorer\Internet Control Panel\Security Page\Internet Zone\Turn on Protected Mode setting.
- B. Disable the Internet Explorer\Internet Control Panel\Prevent ignoring certificate errors setting.
- C. Enable the Internet Explorer\Internet Control Panel\Prevent ignoring certificate errors setting.
- D. Disable the Windows Components\Windows Error Reporting\Disable Windows Error Reporting setting.
- E. Enable the Windows Components\Windows Error Reporting\Disable Windows Error Reporting setting.



F. Enable the Internet Explorer\Internet Control Panel\Security Page\Internet Zone\Do not prompt for client certificate selection when no certificate or only one certificate setting.

Correct Answer: C

QUESTION 11

You have an Active Directory domain. All client computers run Windows 7 and are joined to the domain. All administrators have laptop computers that have integrated smart card readers. All administrator accounts are configured to require

the smart cards to log on to the domain.

A smart card reader fails on your laptop. You order a replacement smart card reader. The new reader will be delivered next week.

You need to ensure that you can log on to the domain by using your administrative user account. You request that a domain administrator modify the properties of your user account.

What else should you request the domain administrator to do?

- A. Reset your computer account.
- B. Reset your user account password.
- C. Disable and enable your user account.
- D. Remove your computer from the domain, and then join your computer to the domain.

Correct Answer: B

QUESTION 12

A company has computers running Windows 7 Enterprise.

One computer is not able to emit sound from the speakers. The computer has an onboard sound controller. You check the computer's Device Manager but the device is not listed there.

You need to ensure that the computer can emit sound correctly.

What should you do? (To answer, drag the appropriate options from the list of options to the work area.)

Select and Place:



Answer Choices

Enable	Disable	Update
Unmute	Roll back	Reconnect
Speakers	Audio Driver	Audio system in Bios

Answer Area

You should
 the
on the computer having the
problem.

Correct Answer:



Answer Choices

	Disable	Update
Unmute	Roll back	Reconnect
Speakers	Audio Driver	

Answer Area

You should the on the computer having the problem.



To Read the [Whole Q&As](#), please purchase the [Complete Version](#) from [Our website](#).

Try our product !

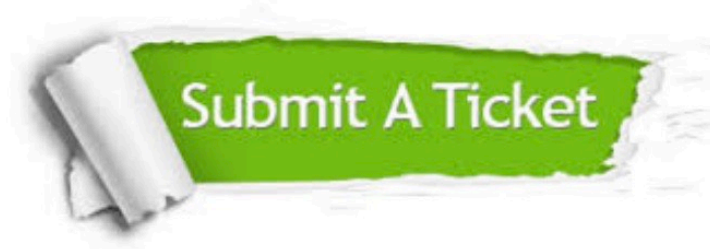
100% Guaranteed Success
100% Money Back Guarantee
365 Days Free Update
Instant Download After Purchase
24x7 Customer Support
Average 99.9% Success Rate
More than 800,000 Satisfied Customers Worldwide
Multi-Platform capabilities - [Windows](#), [Mac](#), [Android](#), [iPhone](#), [iPod](#), [iPad](#), [Kindle](#)

We provide exam PDF and VCE of Cisco, Microsoft, IBM, CompTIA, Oracle and other IT Certifications. You can view Vendor list of All Certification Exams offered:

<https://www.passapply.com/allproducts>

Need Help

Please provide as much detail as possible so we can best assist you.
To update a previously submitted ticket:



 <p>One Year Free Update Free update is available within One Year after your purchase. After One Year, you will get 50% discounts for updating. And we are proud to boast a 24/7 efficient Customer Support system via Email.</p>	 <p>Money Back Guarantee To ensure that you are spending on quality products, we provide 100% money back guarantee for 30 days from the date of purchase.</p>	 <p>Security & Privacy We respect customer privacy. We use McAfee's security service to provide you with utmost security for your personal information & peace of mind.</p>
---	---	--

Any charges made through this site will appear as Global Simulators Limited.
All trademarks are the property of their respective owners.
Copyright © passapply, All Rights Reserved.