



70-680^{Q&As}

Windows 7 Configuring

Pass Microsoft 70-680 Exam with 100% Guarantee

Free Download Real Questions & Answers **PDF** and **VCE** file from:

<https://www.passapply.com/70-680.html>

100% Passing Guarantee
100% Money Back Assurance

Following Questions and Answers are all new published by Microsoft
Official Exam Center

-  **Instant Download** After Purchase
-  **100% Money Back** Guarantee
-  **365 Days** Free Update
-  **800,000+** Satisfied Customers





QUESTION 1

A company has a new deployment of Windows Deployment Services (WDS), the Microsoft Deployment Toolkit (MDT), and the Windows Automated Installation Kit (WAIK). You need to capture an image of a Windows 7 reference computer.

Which two actions should you perform on the server before performing actions on the reference computer? (Each correct answer presents a complete solution. Choose two.)

- A. Run the Dism command with the /Mount-Wim option.
- B. Create a capture image in WDS.
- C. Run the BCDEdit command.
- D. Run the Dism command with the /Add-Driver option.
- E. Run the imageX command with the /Mount parameter.
- F. Use Sysprep with an answer file and set the UpdateInstalledDrivers option in the answer file to No.
- G. Add a boot image in WDS.
- H. Run the Start/w ocsetupcommand.
- I. Run the PEImg /Prep command.
- J. Run the DiskPart command and the Attach command option.
- K. Use Sysprep with an answer file and set the UpdateInstalledDrivers option in the answer file to Yes.
- L. Use Sysprep with an answer file and set the PersistAHDeviceInstalls option in the answer file to True.
- M. Run the Dism command with the /Add-Package option.
- N. Use Sysprep with an answer file and set the PersistAHDeviceInstalls option in the answer file to False.

Correct Answer: BG

[http://technet.microsoft.com/en-us/library/cc766320\(v=ws.10\).aspx](http://technet.microsoft.com/en-us/library/cc766320(v=ws.10).aspx) MDT relies on boot images created in WDS, WAIK is a collection of tools that you use to help automate deployment.

To capture an image created on a reference computer you need to add a boot.wim files to WDS, then using the boot.wim, create a capture wim file (usually called capture.wim). This allows you to capture a a reference computer.

QUESTION 2

You need to configure a computer to encrypt all inbound connections by using IPsec.

What should you do?

- A. From Network and Sharing Center, click Connect to a network.



- B. From Network and Sharing Center, click Set up a new connection or network.
- C. From Windows Firewall with Advanced Security, click Inbound Rules and then click New Rule.
- D. From Windows Firewall with Advanced Security, click Connection Security Rules and then click New Rule.

Correct Answer: D

Connection Security Rules Connection security rules are a special type of rule that deal with authenticated and encrypted traffic. You can use connection security rules to manage how communication occurs between different hosts on the network. You use the New Connection Security Rule Wizard, to create connection security rules. Connections can be authenticated using the Kerberos V5 protocol requiring a domain computer and user account or a domain computer account. If you select advanced properties, connections can be authenticated using NTLMv2, computer certificates from a particular certificate authority (CA) or using a pre-shared key.

Connection Security Rules and IPSec policies The relationship between connection security rules and IPSec policies is similar to the relationship between AppLocker and Software Restriction Policies. Both sets of rules do similar things, but the ones that you use depend on the operating systems used by the client computers in your organization. All editions of Windows 7 and Windows Vista support connection security rules, but Windows XP does not.

QUESTION 3

You use a computer that has Windows 7 SP1 installed and has a folder named C:\Data. The active network connection for the computer is configured as Public.

You assign User1 to a local group called DataUsers. The group has been granted Read NTFS permissions for the folder.

User1 browses to the shared folder across the network and receives the following error message:

"Access is Denied."

You need to ensure that the user can download files from the shared folder.

What should you do?

- A. Allow file and printer sharing through Windows Firewall.
- B. Change the network location of the computer from a Public network to a Home or Work network.
- C. From the Security settings of the C:\Data folder, assign the Full Control NTFS permissions to User1.
- D. From the Advanced Sharing settings of the folder, assign the Read share permission to User1.
- E. From the Advanced Sharing permissions, enable caching.

Correct Answer: D

QUESTION 4

Your network consists of an Active Directory domain and 100 computers that run Windows 7.

The domain contains a logon script named logon.cmd.



You plan to deploy a new application named app1.msi by using the logon script. App1.msi is stored in \\server1\share1.

You need to modify the logon script to deploy the application.

What should you include in the logon script?

- A. Sbdinst.exe -u \\server1\share1\app1.msi -q
- B. Msinfo32.exe \\server1\share1\app1.msi
- C. Pkgmgr.exe /ip /m:\\server1\share1\app1.msi
- D. Msiexec.exe /i \\server1\share1\app1.msi /quiet

Correct Answer: D

Msiexec

Provides the means to install, modify, and perform operations on Windows Installer from the command line.

To install or configure a product Syntax

```
msiexec /i {package|ProductCode}
```

/i : Installs or configures a product.

NOT Msinfo32

Displays a comprehensive view of your hardware, system components, and software environment.

QUESTION 5

You administer a desktop computer that has the following hardware specifications:

Dual-core 2.5GHz processor

1GB RAM

25GB unpartitioned disk space Onboard graphics that has WDDM 1.0

You install a customized Windows 7 Enterprise 64-bit image on the computer by using unpartitioned disk space. The computer operates unacceptably slow.

You need to improve the performance of the computer.

What should you do?

- A. Upgrade the RAM to 1 GB.
- B. Open Task Manager. Set the priority of all SYSTEM processes to High.
- C. Open Performance Monitor. Run the System Performance Data Collector Set.
- D. Perform the initial Windows Experience Index Run.



Correct Answer: A

<http://windows.microsoft.com/en-us/windows7/products/system-requirements> Should have 2GB RAM as a minimum.

QUESTION 6

You have a customized image of Windows 7 Professional.

You mount the image and modify the contents of the image.

You need to restore the image to its original state.

Which tool should you use?

- A. Dism.exe
- B. Ocsetup.exe
- C. Pkgmgr.exe
- D. Sysprep.exe

Correct Answer: A

Dism Deployment Image Servicing and Management (DISM) is a command-line tool used to service Windows images offline before deployment. You can use it to install, uninstall, configure, and update Windows features, packages, drivers, and international settings. Subsets of the DISM servicing commands are also available for servicing a running operating system. Windows 7 introduces the DISM command-line tool. You can use DISM to service a Windows image or to prepare a Windows PE image. DISM replaces Package Manager (Pkgmgr.exe), PEimg, and Intlcfg in Windows Vista, and includes new features to improve the experience for offline servicing.

You can use DISM to perform the following actions:

*

Prepare a Windows PE image.

*

Enable or disable Windows features within an image.

*

Upgrade a Windows image to a different edition.

*

Add, remove, and enumerate packages.

*

Add, remove, and enumerate drivers.

*



Apply changes based on the offline servicing section of an unattended answer file.

*

Configure international settings.

*

Implement powerful logging features.

*

Service operating systems such as Windows Vista with SP1 and Windows Server 2008.

*

Service a 32-bit image from a 64-bit host and service a 64-bit image from a 32-bit host.

*

Service all platforms (32-bit, 64-bit, and Itanium).

*

Use existing Package Manager scripts.

DISM Command-Line Options

To service a Windows image offline, you must apply or mount it. WIM images can be mounted using the WIM commands within DISM, or applied and then recaptured using ImageX. You can also use the WIM commands to list the indexes or

verify the architecture for the image you are mounting. After you update the image, you must dismount it and then either commit or discard the changes you have made.

NOT Sysprep

Sysprep is a tool designed for corporate system administrators, OEMs, and others who need to deploy the Windows XP operating system on multiple computers.

After performing the initial setup steps on a single system, you can run Sysprep to prepare the sample computer for cloning. Sysprep prepares the image for capture by cleaning up various user-specific and computerspecific settings, as well as

log files. The reference installation now is complete and ready to be imaged.

QUESTION 7

A company has client computers that run Windows 7 Enterprise. You need to ensure that Windows does not display notifications when programs try to install software or make changes to the computer, or if users make changes to Windows settings.

Which two choices should you use to achieve this goal? (Each correct answer presents a complete solution. Choose two.)



- A. the leads command
- B. the netsh command
- C. share permissions
- D. Device Manager
- E. Local Users and Groups
- F. the folder Properties window
- G. the Services management console
- H. the Group Policy management console
- I. the User Account Control Settings Control Panel window

Correct Answer: HI

QUESTION 8

You are installing a custom Windows 7 system image to a new computer. Perform the following tasks"

Start the new computer by using the Windows preinstallation Environment (WPE) ?Connect to a shared network location that contains the Windows 7 image file.

You need to apply the Windows 7 image to the computer.

What should you do before you apply the image?

- A. Mount the image.
- B. Configure Windows Firewall.
- C. Configure and format the haard disk drive.
- D. Initializa the Boot Configuration data (BCD) store.

Correct Answer: C

QUESTION 9

You use a portable computer that has Windows 7 installed. The computer has a single hard disk drive and a dual-core CPU.

You need to analyze the performance of the computer to meet the following requirements:

Include the CPU, Memory, and Disk subsystems.



Send notifications to an administrator for predefined thresholds.

What should you do?

- A. Run powercfg.exe.
- B. Run the Windows Experience Index.
- C. Configure Event Viewer subscriptions.
- D. Open Task Manager.
- E. Open System Properties, and configure performance settings.
- F. Open System Properties, and configure environment variables.
- G. Open System Properties, and configure user profiles settings.
- H. Open System Properties, and configure the page file settings.
- I. Open Performance Monitor, and configure a Data Collector Set.
- J. Open Performance Monitor, and customize the System Monitor view.

Correct Answer: I

QUESTION 10

What command-line utility can you use in Windows 7 to edit boot options?

- A. Bootmgr.exe
- B. Winload.exe
- C. Bcdedit.exe
- D. Winresume.exe

Correct Answer: C

QUESTION 11

You need to create a virtual hard disk (VHD) file that will be used to deploy Windows 7. The solution must minimize the performance impact caused by using a VHD.

Which type of VHD should you create?

- A. differencing disk
- B. dynamically expanding disk



- C. fixed-size disk
- D. snapshot

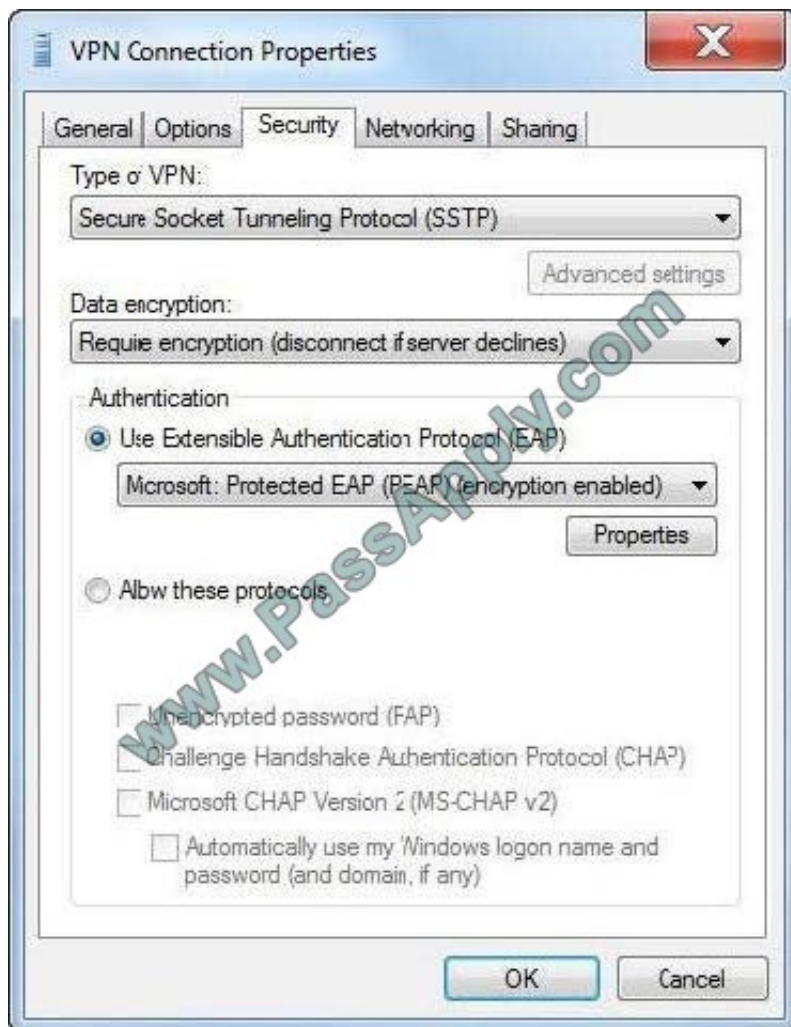
Correct Answer: C

Typically, you place the VHD on a second internal or external hard disk (although this is not essential). You then specify the VHD size and format settings.

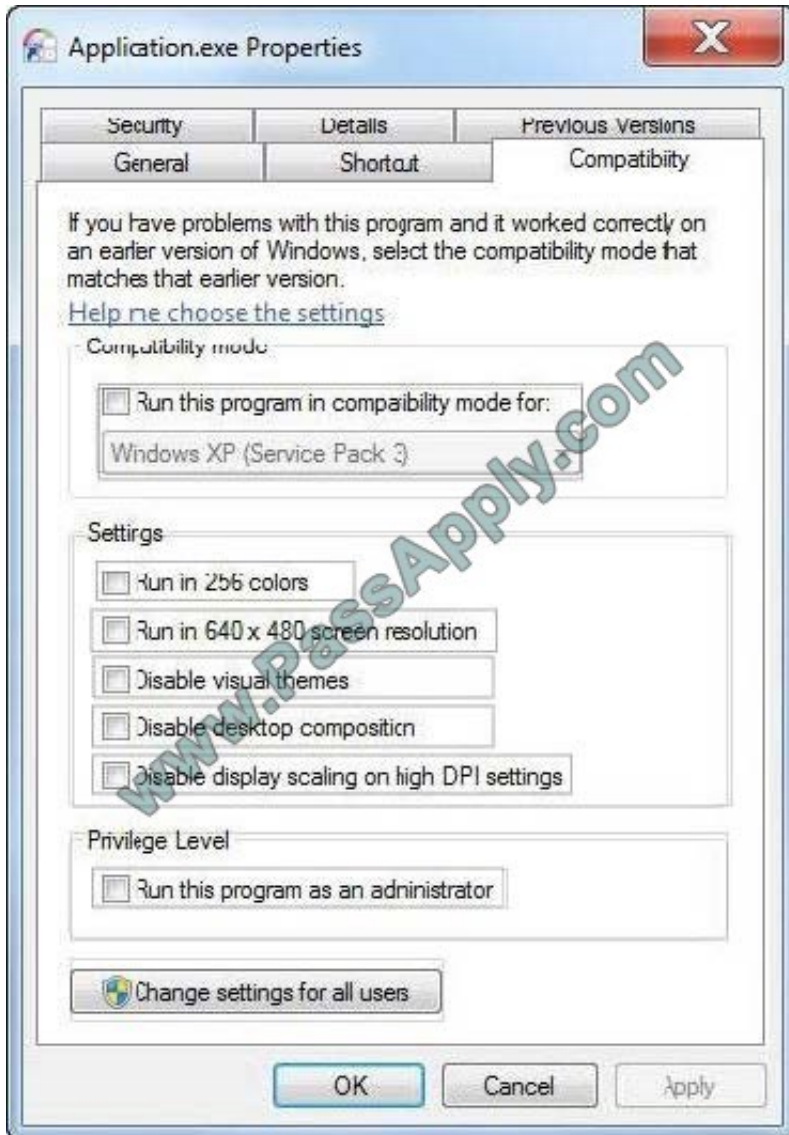
Microsoft recommends the default Fixed Size setting, but you can select Dynamic Expanding if you do not want to allocate the disk space. Fixed Size gives better performance and is more suitable in a production environment.

QUESTION 12

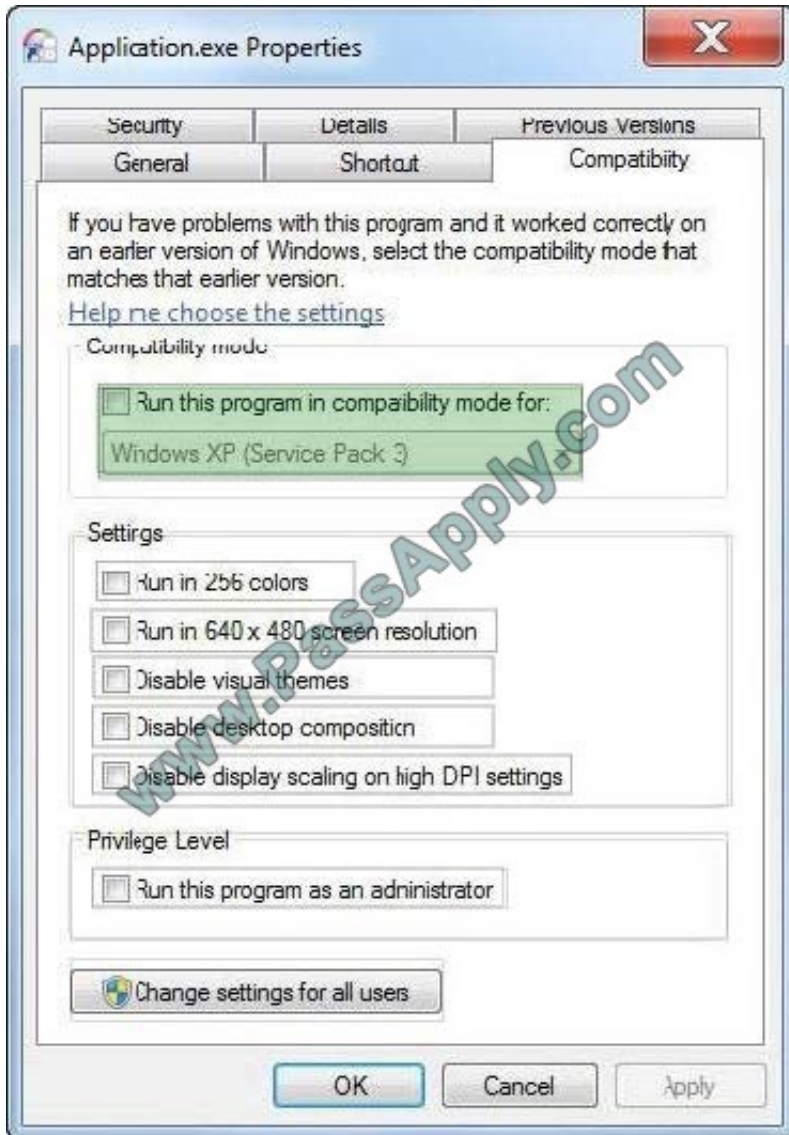
You have upgraded a Windows XP system to Windows 7. One of the applications is not showing menus when you launch it under Windows 7. How do you fix this issue?



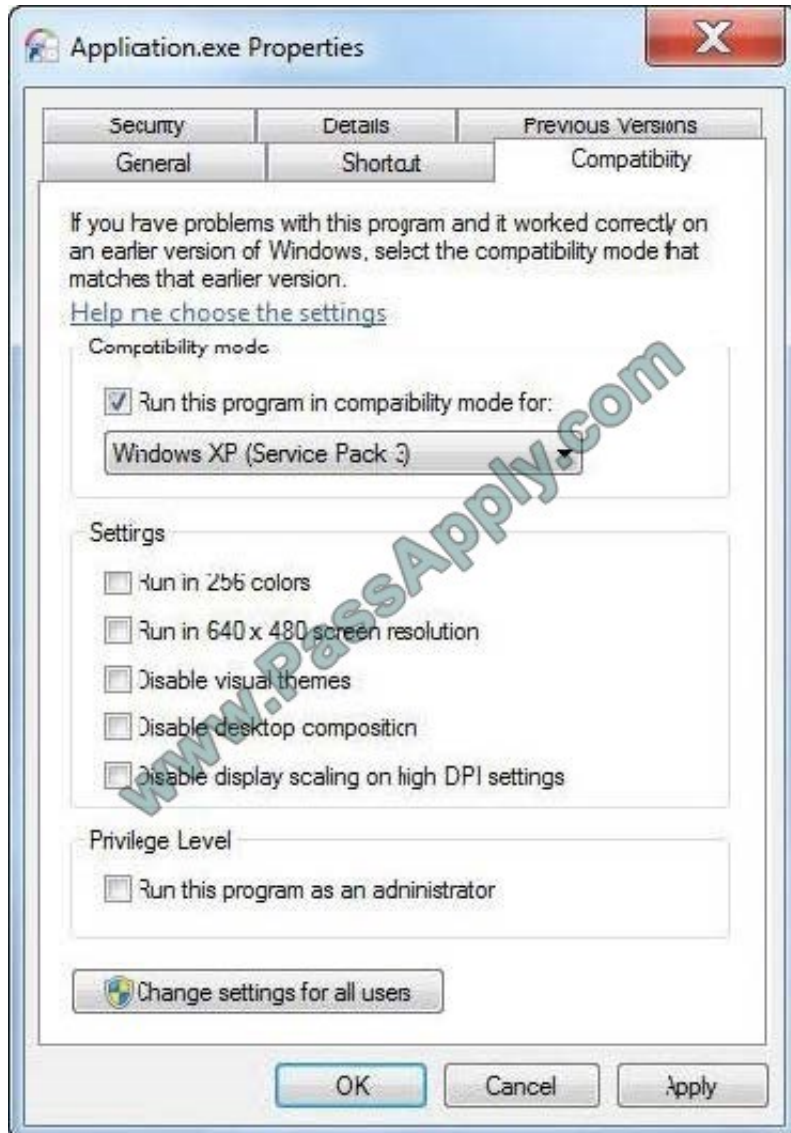
Hot Area:



Correct Answer:



Check the box "Run this program in compatibility mode for" and from the drop down list choose Windows XP (Service Pack 3) Through Properties Page



1. Right click on the program's shortcut (LNK file), .EXE file, BAT file, CMD file, or MSI file.
2. Click on Properties.
3. Click on the Compatibility tab. (see screenshot below)

NOTE: If the Compatibility options are grayed out, then it is a 64 bit program and cannot be changed.

4. To Run a Program in Compatibility Mode

NOTE: Runs the program using settings from a previous version of Windows. Try this setting if you know the program is designed for (or worked in) a specific previous version of Windows.

A) Check the Run this program in compatibility mode for box. (see screenshot below)

B) Click on the drop down menu arrow and select which version of Windows the program was made for. (see screenshot below)

NOTE: Always pick the latest Windows version the program was written for to have a better chance of it running properly in Windows 7.



Warning MSI files (right screenshot below) will only have the Previous version of Windows option available for it. This option will allow Windows 7 to automatically use the previous sion compatibility mode it thinks is best for the MSI file to run properly as. You will not be able to do steps 5 and 6 below.

5. To Change the Settings for a Program

A) Check or uncheck the settings you want for the program. (see screenshot below)

NOTE: See the table below the screenshot for a description of each setting.

Setting Description

Run in 256 colors Uses a limited set of colors in the program. Some older programs are designed to use fewer colors.

Run in 640 × 480 screen resolution Runs the program in a smaller-sized window. Try this setting if the graphical user interface appears jagged or is rendered improperly.

Disable visual themes Disables themes on the program. Try this setting if you notice problems with the menus or buttons on the title bar of the program.

Disable desktop composition Turns off transparency and other advanced display features.

Choose this setting if window movement appears erratic or you notice other display problems.

Disable display scaling on high DPI settings Turns off automatic resizing of programs if largescale font size (DPI) is in use. Try this setting if large-scale fonts are interfering with the appearance of the program.

6. To Change the Privilege Level of a Program

NOTE: Runs the program as an administrator. Some programs require administrator privileges to run properly.

If you are not currently logged on as an administrator, this option is not available.

A) Check or uncheck the Run this program as an administrator box to enable or disable this option. (see screenshot below)

7. To Change All of These Settings Above for All Users

NOTE: Lets you choose settings that will apply to all users on this computer.

A) Click on the Change settings for all users button. (See screenshot below)

B) Repeat steps 4, 5, and 6 in this window to apply them to all users on the computer. (see screenshot below)

C) Click on OK.

8. Click on OK to apply the changes.



To Read the [Whole Q&As](#), please purchase the [Complete Version](#) from [Our website](#).

Try our product !

100% Guaranteed Success
100% Money Back Guarantee
365 Days Free Update
Instant Download After Purchase
24x7 Customer Support
Average 99.9% Success Rate
More than 800,000 Satisfied Customers Worldwide
Multi-Platform capabilities - [Windows](#), [Mac](#), [Android](#), [iPhone](#), [iPod](#), [iPad](#), [Kindle](#)

We provide exam PDF and VCE of Cisco, Microsoft, IBM, CompTIA, Oracle and other IT Certifications. You can view Vendor list of All Certification Exams offered:

<https://www.passapply.com/allproducts>

Need Help

Please provide as much detail as possible so we can best assist you.
To update a previously submitted ticket:



 <p>One Year Free Update Free update is available within One Year after your purchase. After One Year, you will get 50% discounts for updating. And we are proud to boast a 24/7 efficient Customer Support system via Email.</p>	 <p>Money Back Guarantee To ensure that you are spending on quality products, we provide 100% money back guarantee for 30 days from the date of purchase.</p>	 <p>Security & Privacy We respect customer privacy. We use McAfee's security service to provide you with utmost security for your personal information & peace of mind.</p>
---	---	--

Any charges made through this site will appear as Global Simulators Limited.
All trademarks are the property of their respective owners.
Copyright © passapply, All Rights Reserved.