



70-649^{Q&As}

TS: Upgrading Your MCSE on Windows Server 2003 to Windows Server 2008, Technology Specialist

Pass Microsoft 70-649 Exam with 100% Guarantee

Free Download Real Questions & Answers **PDF** and **VCE** file from:

<https://www.passapply.com/70-649.html>

100% Passing Guarantee
100% Money Back Assurance

Following Questions and Answers are all new published by Microsoft Official Exam Center

-  **Instant Download** After Purchase
-  **100% Money Back** Guarantee
-  **365 Days** Free Update
-  **800,000+** Satisfied Customers





QUESTION 1

Your network contains a server named Server1. Server1 has two 100 GB hard disk drives named C and E that are configured as simplevolumes.

Drive E hosts a shared folder named Folder1.

You plan to allow a new group of users to store up to 400 GB of data in a new shared folder. You add two 500 GB disk drives to the server.

You need to ensure that new group of users can access the new shared folder and that the data stored in the folder is fault tolerant.

What should you do first?

- A. From the Share and Storage Management console, run the Provision a Shared Folder Wizard.
- B. From the Share and Storage Management console, run the Provision Storage Wizard.
- C. From the Disk Management console, run the Add Mirror wizard.
- D. From the Disk Management console, run the Extend Volume Wizard.

Correct Answer: D

QUESTION 2

You need to manually create a service location (SRV) record for a server that has the Key Management Service (KMS) installed.

Which SRV record should you create?

- A. _mskms._tcp.contoso.com
- B. _vlmcs._tcp.contoso.com
- C. _kms._tcp._msdcs.contoso.com
- D. _kms._tcp.contoso.com

Correct Answer: B

Manually Create SRV Records in DNS If the environment does not support DDNS, the SRV RRs must be manually created to publish the KMS host. Environments that do not support DDNS should disable publishing on all KMS hosts to prevent event logs from collecting failed DNS publishing events. To disable auto- publishing, use the SImgr.vbs script with the /cdns command-line option. See the "Configuring KMS" section for more information about the SImgr.vbs script. Note Manually created SRV RRs can coexist with SRV RRs that KMS hosts automatically publish in other domains as long as all records are maintained to prevent conflicts. Using DNS Manager, in the appropriate forwarding lookup zone, create a new SRV RR using the appropriate information for the location. By default, KMS listens on TCP port 1688, and the service is _VLMCS. Table 2 contains example settings for a SRV RR. Table 2 SRV Resource Record



Name	Setting
Service	_VLMCS
Protocol	_TCP
Port number	1688
Host offering the service	FQDN of KMS Host

QUESTION 3

Your network contains two separate subnets named Subnet1 and Subnet2. Subnet1 contains a Windows Server Update Services (WSUS) server named Server1.

Computers on Subnet1 can access resources on the Internet. Subnet2 is an isolated subnet.

You deploy a new WSUS server named Server2 in Subnet2.

You need to replicate the metadata from Server1 to Server2.

What should you do on Server1?

- A. Run wsusutil.exe and specify the export parameter.
- B. Run wsusutil.exe and specify the move content parameter.
- C. Run wbadm.exe and specify the start backup parameter.
- D. Run wbadm.exe and specify the start system state backup parameter.

Correct Answer: A

<http://technet.microsoft.com/en-us/library/cc720437%28WS.10%29.aspx>

QUESTION 4

You deploy a Windows Server 2008 R2 VPN server behind a firewall. Remote users connect to the VPN by using portable computers that run Windows 7.

The firewall is configured to allow only secured Web communications.

You need to enable remote users to connect as securely as possible. You must achieve this goal without opening any additional ports on the firewall.

What should you do?

- A. Create an SSTP VPN connection.
- B. Creates a PPTP VPN connection.
- C. Create an L2TP VPN connection.



D. Create an IPsec tunnel.

Correct Answer: A

Explanation: Secure Socket Tunneling Protocol (SSTP) is a tunneling protocol that uses the HTTPS protocol over TCP port 443 to pass traffic through firewalls and Web proxies that might block PPTP and L2TP/IPsec traffic. SSTP provides a mechanism to encapsulate PPP traffic over the Secure Sockets Layer (SSL) channel of the HTTPS protocol. The use of PPP allows support for strong authentication methods, such as EAP-TLS. SSL provides transport-level security with enhanced key negotiation, encryption, and integrity checking. Although it is closely related to SSL, a direct comparison can not be made between SSL and SSTP as SSTP is only a tunneling protocol unlike SSL. Many reasons exist for choosing SSL and not IPsec as the basis for SSTP. IPsec is directed at supporting site- to- site VPN connectivity and thus SSL was a better base for SSTP development, as it supports roaming. [http://technet.microsoft.com/en-us/library/dd469817\(v=ws.10\).aspx](http://technet.microsoft.com/en-us/library/dd469817(v=ws.10).aspx)

QUESTION 5

Your network contains an FTP server that runs Windows Server 2008 R2. You need to prevent FTP users from viewing all folders named _private. What should you configure?

- A. FTP Request Filtering
- B. FTP Directory Browsing
- C. FTP IPv4 Address and Domain Restrictions
- D. FTP Authorization Rules

Correct Answer: A

QUESTION 6

You are evaluating whether to purchase Windows Server 2008 R2 Service Pack 1 (SP1).

Several weeks ago, you installed Windows Server 2008 R2 SP1 on a server. During the installation, you did not enter a product key.

You need to identify how many days remain until the license status of the server will change to Unlicensed.

Which tool should you use?

- A. Slmgr.vbs
- B. Action Center
- C. Wevutil.exe
- D. System Configuration

Correct Answer: A

slmgr.vbs -dli

Display license information.



By default, /dli displays the license information for the installed active Windows edition. Specifying the [Activation ID] parameter displays the license information for the specified edition associated with that Activation ID. Specifying the [All] as

the parameter will display all applicable installed products\\' license information. This operation does not require elevated privileges.

QUESTION 7

Your network contains a server that has the Remote Desktop Session Host (RD Session Host) role service installed.

You need to prevent administrators from logging other administrators off of the console session.

What should you do?

- A. From the RDP-Tcp properties of the RD Session Host server, modify the Client Settings.
- B. From the RDP-Tcp properties of the RD Session Host server, modify the Sessions settings.
- C. From the Computer Configuration Group Policy settings, modify the Remote Desktop Session Host settings.
- D. From the User Configuration Group Policy settings, modify the Remote Desktop Connection Client settings.

Correct Answer: C

Connections

Policy settings in this node control connection settings on a Remote Desktop Session Host server.

The full path of this node in the Group Policy Management Console is Computer Configuration\Policies\Administrative Templates\Windows Components\Remote Desktop Services \Remote Desktop Session Host\Connections.

Deny logoff of an administrator logged in to the console session This policy setting determines whether an administrator attempting to connect Remote1y to the console of a server can log off an administrator currently logged on to the

console. This policy is useful when the currently connected administrator does not want to be logged off by another administrator. If the connected administrator is logged off, any data not previously saved is lost. If you enable this policy

setting, logging off the connected administrator is not allowed. If you disable or do not configure this policy setting, logging off the connected administrator is allowed.

Note The console session is also known as Session 0. Console access can be obtained by using the /console switch from Remote Desktop Connection in the computer field name or from the command line

Source: <http://technet.microsoft.com/en-us/library/ee791922.aspx>

QUESTION 8

Your network contains a single Active Directory domain. The domain contains four servers that run Windows Server 2008 R2. The servers are configured as shown in the following table.



Server name	Role service
Server1	Remote Desktop Licensing (RD Licensing)
Server2	Remote Desktop Session Host (RD Session Host)
Server3	Remote Desktop Licensing (RD Licensing)
Server4	Remote Desktop Session Host (RD Session Host)

You need to ensure that Server1 only issues Remote Desktop Services client access licenses (RDS CALs) to Server2.

Which two tasks should you perform? (Each correct answer presents part of the solution. Choose two.)

- A. In the domain, add Server2 to the Terminal Server License Servers group.
- B. On Server1, add Server2 to the Terminal Server Computers group.
- C. In the domain, configure the Set the Remote Desktop licensing mode Group Policy setting.
- D. On Server1, enable the License Server Security Group Group Policy setting.

Correct Answer: BD

When the Remote Desktop Licensing role service is installed on the server, the Terminal Server Computers local group is created. The license server will respond only to requests for RDS CALs from Remote Desktop Session Host servers whose computer accounts are members of this group if the Computer Configuration\Administrative Templates\Windows Components\Remote Desktop Services\RD Licensing\License server security group Group Policy setting has been enabled and applied to the license server. By default, the Terminal Server Computers local group is empty. When the Remote Desktop Licensing role service is removed from the server, the Terminal Server Computers local group is deleted. Source: [http://technet.microsoft.com/en-us/library/ee891291\(WS.10\).aspx](http://technet.microsoft.com/en-us/library/ee891291(WS.10).aspx)

QUESTION 9

Your network contains an Active Directory domain named fabrikam.com. The domain contains a Web Server named Web1 that runs Windows Server 2008 R2.

You create a new site named Site1.

You need to ensure that when a user enters a URL on Site1 for a resource that does not exist, a custom Web page displays. Which feature should you configure?

- A. HTTP Redirect
- B. Authorization Rules
- C. Error Pages
- D. Default Document

Correct Answer: C

Configurability of Custom Errors IIS 7.0 makes it easier to configure custom errors exactly how you want them. Added configuration options in the UI give administrators more flexibility and granularity; you can edit the existing configuration settings, or add completely new ones. Configuring error pages through the IIS Manager is done via the Error Pages feature in the main pane:



To edit the configuration of an existing customer error page, select the status code entry in the main pane, and choose Edit... in the Actions pane. The Edit Customer Error Page window will appear:

The Add Custom Error Page looks almost the same, except the fields are blank:



Add Custom Error Page

Status code:
Example: 404 or 404.2

Response Action

☒ **Insert content from static file into the error response**

File path:
Browse...

☐ Try to return the error file in the client language

☐ **Execute a URL on this site**

URL (relative to site root):
Example: /ErrorPages/404.aspx

☐ **Respond with a 302 redirect**

Absolute URL:
Example: http://www.contoso.com/404.aspx

OK Cancel

<http://blogs.msdn.com/b/webtopics/archive/2008/05/28/iis-7-0-http-error-pages.aspx>

QUESTION 10

Your network contains an Active Directory domain named fabrikam.com. The domain contains a Web server named Web1 that runs Windows Server 2008 R2.

You create a new site named Site1.

You need to prevent Web1 from accepting HTTP URLs that are longer than 1,024 bytes.

Which feature should you configure?

- A. Authorization Rules
- B. Connection Strings
- C. HTTP Response Headers
- D. Request Filtering

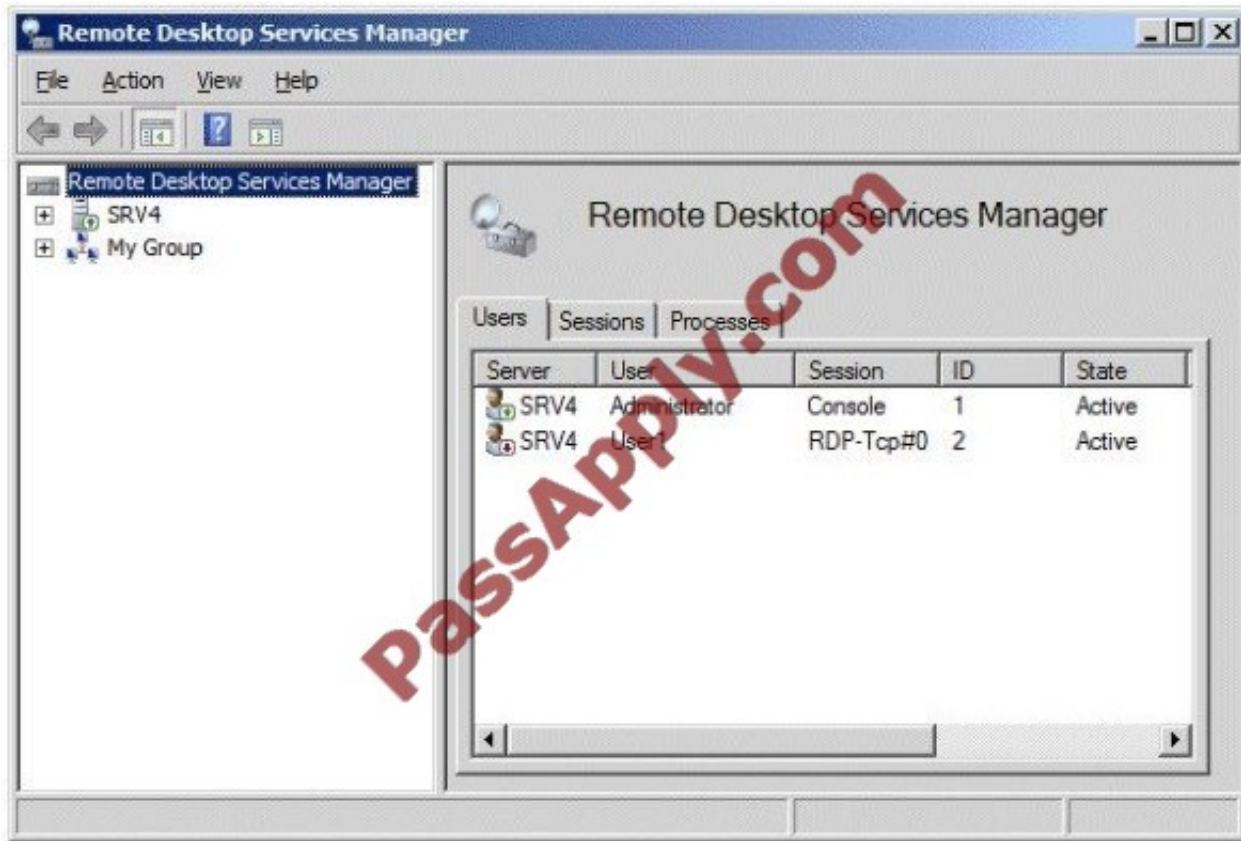
Correct Answer: D



QUESTION 11

You have a Remote Desktop Session Host (RD Session Host) server named SRV4.

You open Remote Desktop Services Manager as shown in the exhibit (Click the Exhibit button.)



You need to take remote control of the session of User1. What should you do first?

- A. From Remote Desktop Connection, connect to Server4.
- B. From local Users and Groups, add user1 to the Remote Desktop Users group.
- C. From Remote Desktop Services Manager, disconnect the session of User1.
- D. From Local Users and Groups, add the built-in Administrator account to the Remote Desktop Users group.

Correct Answer: A

QUESTION 12

You manage a Web server named Server1 that runs Windows Server 2008 R2. Server1 has five application pools. You need to recycle one application pool without affecting the other application pools. Which tool should you use?

- A. Internet Information Services (IIS) Manager
- B. Telnet



- C. Windows Firewall
- D. Performance Monitor
- E. Ftp
- F. Services
- G. Internet Information Services (IIS) 6.0 Manager
- H. Security Configuration Wizard (SCW)
- I. lisreset
- J. Component Services
- K. Local Security Policy
- L. System Configuration

Correct Answer: A

[Latest 70-649 Dumps](#)

[70-649 VCE Dumps](#)

[70-649 Braindumps](#)



VCE & PDF

PassApply.com

<https://www.passapply.com/70-649.html>

2021 Latest passapply 70-649 PDF and VCE dumps Download

To Read the [Whole Q&As](#), please purchase the [Complete Version](#) from [Our website](#).

Try our product !

100% Guaranteed Success

100% Money Back Guarantee

365 Days Free Update

Instant Download After Purchase

24x7 Customer Support

Average 99.9% Success Rate

More than 800,000 Satisfied Customers Worldwide

Multi-Platform capabilities - [Windows](#), [Mac](#), [Android](#), [iPhone](#), [iPod](#), [iPad](#), [Kindle](#)

We provide exam PDF and VCE of Cisco, Microsoft, IBM, CompTIA, Oracle and other IT Certifications.
You can view Vendor list of All Certification Exams offered:

<https://www.passapply.com/allproducts>

Need Help

Please provide as much detail as possible so we can best assist you.

To update a previously submitted ticket:



 One Year Free Update Free update is available within One Year after your purchase. After One Year, you will get 50% discounts for updating. And we are proud to boast a 24/7 efficient Customer Support system via Email.	 Money Back Guarantee To ensure that you are spending on quality products, we provide 100% money back guarantee for 30 days from the date of purchase.	 Security & Privacy We respect customer privacy. We use McAfee's security service to provide you with utmost security for your personal information & peace of mind.
---	---	--

Any charges made through this site will appear as Global Simulators Limited.

All trademarks are the property of their respective owners.

Copyright © passapply, All Rights Reserved.