



70-643^{Q&As}

Windows Server 2008 Applications Infrastructure, Configuring

Pass Microsoft 70-643 Exam with 100% Guarantee

Free Download Real Questions & Answers **PDF** and **VCE** file from:

<https://www.passapply.com/70-643.html>

100% Passing Guarantee
100% Money Back Assurance

Following Questions and Answers are all new published by Microsoft
Official Exam Center

-  **Instant Download** After Purchase
-  **100% Money Back** Guarantee
-  **365 Days** Free Update
-  **800,000+** Satisfied Customers





QUESTION 1

You have a Windows Server 2008 R2 server that has the Web Server (IIS) server role installed. The server hosts multiple Web sites.

You need to configure the server to automatically release memory for a single Web site. You must achieve this goal without affecting the other Web sites.

What should you do?

- A. Create a new Web site and edit the bindings for the Web site.
- B. Create a new application pool and associate the Web site to the application pool.
- C. Create a new virtual directory and modify the Physical Path Credentials on the virtual directory.
- D. From the Application Pool Defaults, modify the Recycling options.

Correct Answer: B

To configure the server to automatically release memory for a single website without affecting the other Web sites, you need to create a new application pool and associate the Web site to the application pool.

An application pool is a group of one or more URLs that are served by a worker process or a set of worker processes. Application pools set boundaries for the applications they contain, which means that any applications that are running outside a given application pool cannot affect the applications in the application pool.

You can configure the server to automatically release memory or to release memory after reaching maximum used memory.

Reference: IIS 7.0: Managing Application Pools in IIS 7.0 <http://technet2.microsoft.com/windowsserver2008/en/library/1dbaa793-0a05-4914-a065-4d109db3b9101033.mspx?mfr=true>

Reference: IIS 7.0: Configuring Recycling Settings for an Application Pool <http://technet2.microsoft.com/windowsserver2008/en/library/0d5770e3-2f6f-4e11-a47c-9bab6a69ebc71033.mspx?mfr=true>

QUESTION 2

Your network contains a Web server that runs Windows Server 2008 R2. Users can connect to the Default Web Site.

You create a new Web site and assign the site a host header. Users cannot connect to the new Web site by using the host header. You need to ensure that users can connect to the new Web site by using the host header.

What should you do?

- A. Create an Alias (CNAME) record in DNS for the host header.
- B. Create a service location (SRV) record in DNS for the host header.
- C. Modify the Windows Firewall configuration on the Web server.
- D. Modify the Windows Firewall configuration on the users\' computers.



Correct Answer: A

QUESTION 3

Your network contains a server named Server1 that runs Windows Server 2008 R2. Server1 has the DHCP server role and the Remote Desktop Session Host (RD Session Host) role service installed.

Server1 hosts one RemoteApp program named App1.

You have 200 client computers that run Windows 7. The client computers obtain their IP configurations from the DHCP server.

You enable Remote Desktop IP Virtualization on Server1. You discover that some Remote Desktop connections to App1 are assigned the same IP address. You need to ensure that all Remote Desktop connections receive a unique IP address.

What should you do?

- A. Reconcile the DHCP scope.
- B. Change the properties of the DHCP scope.
- C. Change the Remote Desktop licensing settings.
- D. Change the mode for Remote Desktop IP Virtualization.

Correct Answer: B

QUESTION 4

Your network contains a server named Server1 that has the Remote Desktop Connection Broker (RD Connection Broker) role service installed. You deploy two new servers named Server2 and Server3. On Server2 and Server3, you install the Remote Desktop Session Host (RD Session Host) role service. From the Remote Desktop Session Host Configuration snap-in, you configure Server2 and Server3 as server farm members.

You need to ensure that all Remote Desktop sessions are distributed between Server2 and Server3.

What should you do?

- A. On Server2 and Server3, add the Server1 computer account to the Remote Desktop Users group.
- B. On Server1, add the Server2 computer account and the Server3 computer account to the Session Broker Computers group.
- C. On Server1, install the Remote Desktop Gateway (RD Gateway) role service. Add Server1 as an RD Gateway server farm member.
- D. On Server1, install the Remote Desktop Gateway (RD Gateway) role service. Add Server2 and Server3 as RD



Gateway server farm members.

Correct Answer: B



QUESTION 5

Your network contains a Web server that runs Windows Server 2008 R2.

You need to log all of the configuration changes made from Internet Information Services (IIS) Manager.

Which tool should you use?

- A. Performance Monitor
- B. Appcmd
- C. Event viewer
- D. Netsh

Correct Answer: B



QUESTION 6

Your network contains a Windows Server 2003 server cluster named Cluster1. Cluster1 hosts a print server instance named Print1.

You deploy a Windows Server 2008 R2 failover cluster named Cluster2. You configure Cluster2 to use the physical disk resource used by Print1. From Cluster2, you run the Migrate a Cluster Wizard to migrate Print1 to Cluster2.

You need to ensure that Print1 runs on Cluster2.

What should you do first?

- A. On Cluster1, take Print1 offline.
- B. On Cluster1, modify the failover settings of Print1.
- C. On Cluster2, modify the failover settings of Print1.
- D. On Cluster2, modify the preferred owner settings of Print1.

Correct Answer: A

QUESTION 7

Your network contains an Active Directory domain. The domain contains a server that runs Windows Server 2008 R2. The server has the Remote Desktop Session Host (RD Session Host) role service and the Remote Desktop Web Access

(RD Web Access) role service installed.

When domain users run RemoteApp programs from the RD Web Access page, they are prompted for their credentials.

You need to ensure that the domain users can run the RemoteApp programs without being prompted for their credentials.

What should you do?

- A. From RemoteApp Deployment Settings, configure the Digital Signature Settings.
- B. On each client computer, add the URL of the RD Web Access Web site to the Trusted sites zone.
- C. From RemoteApp Deployment Settings, configure the Common RDP Settings.
- D. on each client computer, add the URL of the RD Web Access Web site to the Local intranet zone.

Correct Answer: A



QUESTION 8

Your network contains an Active Directory domain. The domain contains a member server named Server1. Server1 has the windows Deployment Services (WDS) server role installed.

You need to ensure that only approved client computers receive a boot image from Server1.

Which tab should you select from the Server1 Properties dialog box to make the configuration?

To answer, select the appropriate tab in the answer area.

Point and Shoot:



Correct Answer:





QUESTION 9

You have a server that runs Windows Server 2008. The server has the Web Server (IIS) server role installed and all the Web Server role services installed.

You need to provide a user the ability to administer a Web site.

Which feature should you configure?

- A. .Net Roles
- B. .Net Users
- C. Authentication
- D. IIS Manager Permissions

Correct Answer: D

To provide a user the ability to administer a website, you need to configure IIS Manager Permissions feature on the server.

The IIS Manager Permissions feature is used to allow users to connect to sites and applications in IIS Manager. Permitted users can configure delegated features in any sites or applications for which they have permission. Users can be either IIS Manager users, which are credentials created in IIS Manager by using the IIS Manager Users feature, or Windows users and groups on the local computer or on the domain to which the computer belongs. Reference: IIS 7.0: Configuring Permissions for IIS Manager Users and Windows Users <http://technet2.microsoft.com/windowsserver2008/en/library/33aaec94-c0cb-4402-b91e-a5e3b9c3e0e01033.msp?mfr=true>

QUESTION 10

Your network contains a server that runs Windows Server 2008 R2 and has the Windows Deployment Services (WDS) server role installed. You have a .vhd file that contains an installation of Windows 7. You need to deploy the Windows 7 installation by using WDS. You want to achieve this goal by using the minimum amount of administrative effort.

What should you do first?

- A. From Disk Management, mount the .vhd file.
- B. From Windows Deployment Services, add a capture image.
- C. Run the imagex.exe command and specify the /export parameter.
- D. Run the wdsutil.exe command and specify the /add-image parameter.

Correct Answer: D

To add a virtual hard disk image to the server

1.

Click Start, right-click Command Prompt, and then click Run as administrator.

2.



You must create an image group because .vhd images cannot be in image groups with .wim images. To create an image group for the .vhd image, use the following syntax: WDSUTIL /Add- ImageGroup /ImageGroup:

Example: WDSUTIL /Add-ImageGroup /ImageGroup:"VHD Image Group"

3.

To add the .vhd image to the server, use the following syntax (at a minimum): WDSUTIL /Verbose /Progress /Add-Image /ImageFile: /ImageType:Install /ImageGroup:. For differencing disks, the path to the

image should be to the .vhd file of the differencing disk and not to the parent disk. Adding the differencing .vhd will add the parent .vhd file to the server, but only the differencing disk will be active (the parent .vhd will be inactive). If the

differencing disk is part of chain, choose the last .vhd in the chain. In that case, the immediate parent .vhd and all preceding parent .vhd files in the chain will also be added. Full syntax: WDSUTIL /add-Image /ImageFile: [/

Server:] /ImageType:install [/ImageGroup:] [/Filename:] [/UnattendFile:]

Example: WDSUTIL /Verbose /Progress /Add-Image /ImageFile:"C:\vhd \WindowsServer2008R2.vhd" /Server:MyWDSserver /ImageType:Install /ImageGroup:"VHD Image Group"

4.

Repeat step 3 until you have added all of your .vhd images.

5.

If you want to update the description for an image, use the following steps:

a. Run WDSUTIL /Get-ImageGroup /ImageGroup: and note the name that the server assigned to the image. To display the full image metadata on each image in the group, append /Detailed.

Example: WDSUTIL /Get-ImageGroup /ImageGroup:"VHD Image Group" b. To update the description for an image, use the following syntax where is the name you noted in the previous step: WDSUTIL /Set-Image /

Image: /ImageType:Install /ImageGroup: /Description:.

Example: WDSUTIL /Set-Image /Image:"VHD image" /ImageType:Install /ImageGroup:"VHD Image Group" /

Description:"VHD image for R2"

Source: [http://technet.microsoft.com/en-us/library/dd363560\(WS.10\).aspx](http://technet.microsoft.com/en-us/library/dd363560(WS.10).aspx)

QUESTION 11

Your network contains three servers named Server1, Server2, and Server3.

Server1 and Server2 are accessible from the internal network only.

Server3 is located on a perimeter network.

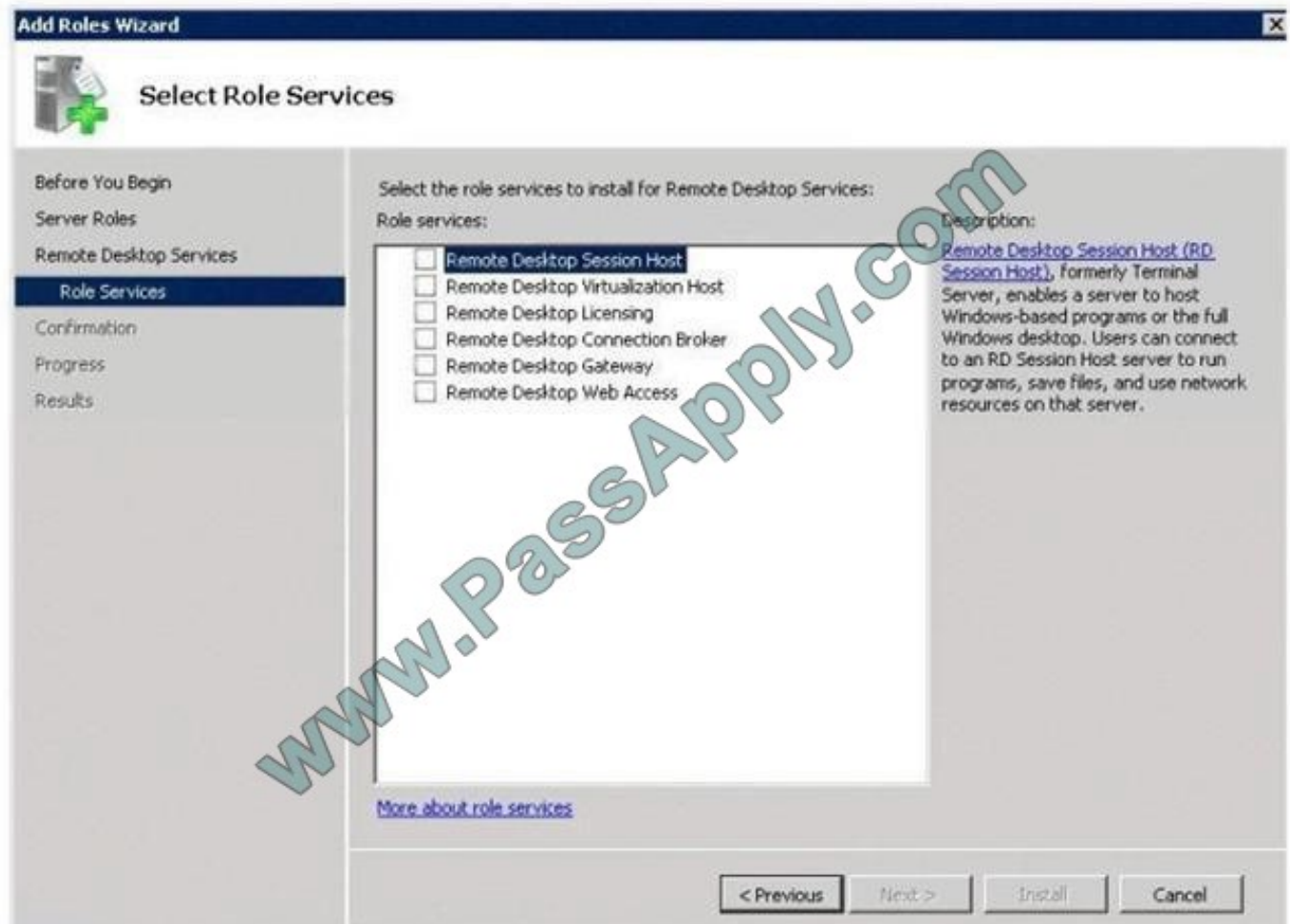
Users connect to Server1 and Server2 to run RemoteApp programs.



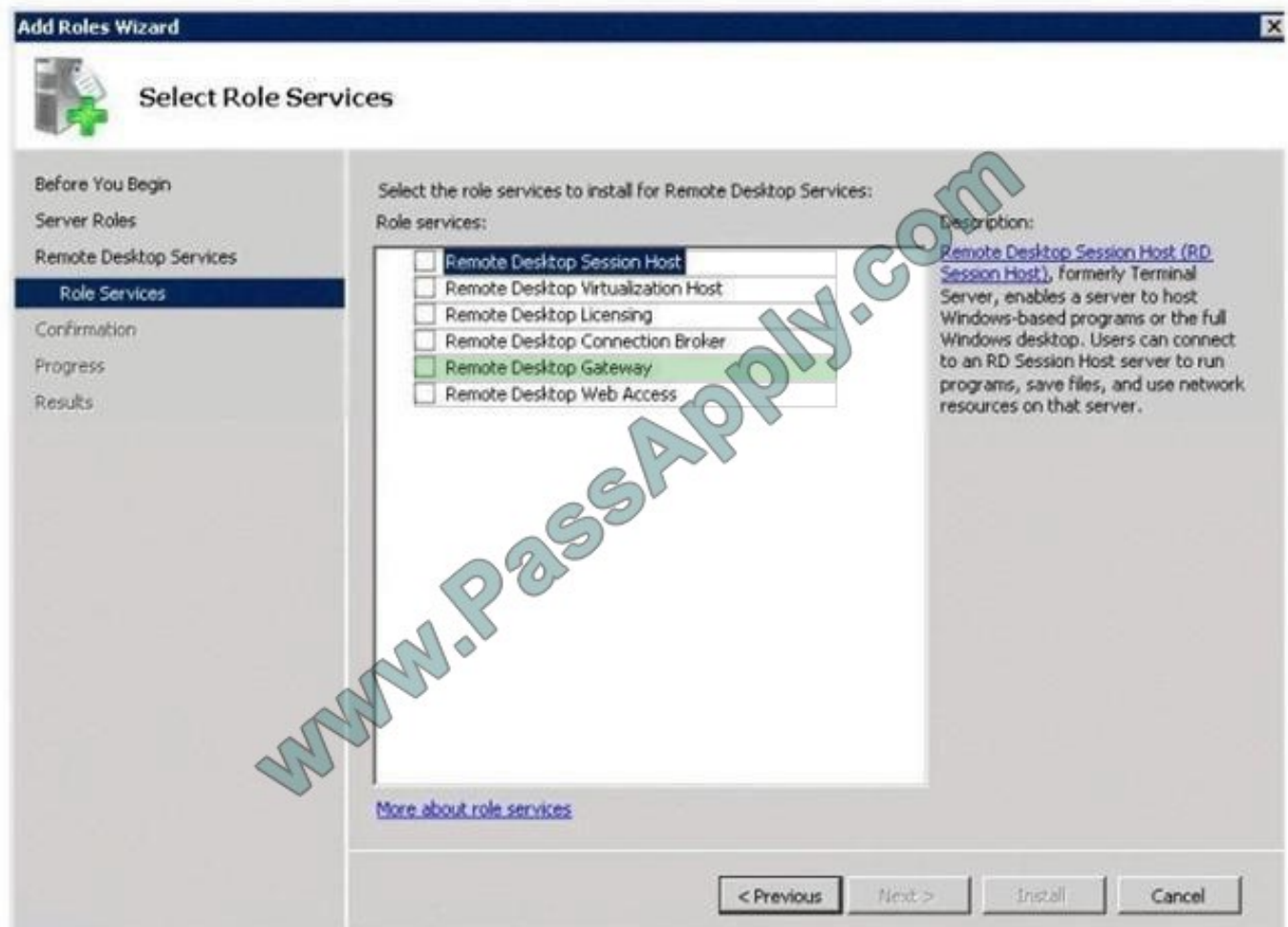
You need to ensure that remote users can run the RemoteApp programs on Server1 and Server2. The solution must minimize the number of ports that must be opened on the internal firewall. Which role service or role services from the Add

Roles Wizard should you install on Server3? To answer, select the appropriate role service or role services in the answer area. Select only the required role service or role services.

Point and Shoot:



Correct Answer:



Original MS exam have an typing error in this question. You must read "Server1" instead of "Server3". select RD Gateway Role

QUESTION 12

Your company has an Active Directory domain. The company has a server named Server1 that has the Terminal Services role and the Terminal Services Web Access role installed. All client computers run Windows XP Service Pack 2 (SP2).

You deploy and publish an application named TimeReport on Server1. The Terminal Services Web Access role uses Active Directory Domain Services (AD DS) and Network Level Authentication is enabled.

You need to ensure that the users can launch TimeReport on Server1 from the Terminal Services Web Access Web page.

What should you do?

- A. Disable publishing to AD DS for the TimeReport remote application.
- B. Install the Remote Desktop Client 6.1 application on the client computers that run Windows XP SP2.
- C. Publish TimeReport on Server1 as a Microsoft Windows Installer package. Distribute the Windows Installer package to the users.



D. Install the Terminal Services Gateway (TS Gateway) role on Server1. Reconfigure the TimeReport remote application publishing to reflect the change in the infrastructure.

Correct Answer: B

To ensure that the users can launch App1 on Server1 from the Terminal Services Web Access Web page, you need to install the Remote Desktop Client 6.1 application on the client computers, which eases the deployment of Windows Server 2008 Terminal services on the client computers that run Windows XP Service Pack 2. Because the Remote Desktop Client 6.1 application supports Terminal Services Web Access, the Windows XP users can launch App1 on Server1 from their Terminal Services Web Access Web page. Reference: Download Microsoft Remote Desktop Connection (Terminal Services Client 6.1) for Windows XP SP2 <http://www.dabcc.com/article.aspx?id=8044>

[Latest 70-643 Dumps](#)

[70-643 PDF Dumps](#)

[70-643 VCE Dumps](#)



To Read the [Whole Q&As](#), please purchase the [Complete Version](#) from [Our website](#).

Try our product !

100% Guaranteed Success
100% Money Back Guarantee
365 Days Free Update
Instant Download After Purchase
24x7 Customer Support
Average 99.9% Success Rate
More than 800,000 Satisfied Customers Worldwide
Multi-Platform capabilities - [Windows](#), [Mac](#), [Android](#), [iPhone](#), [iPod](#), [iPad](#), [Kindle](#)

We provide exam PDF and VCE of Cisco, Microsoft, IBM, CompTIA, Oracle and other IT Certifications.
You can view Vendor list of All Certification Exams offered:

<https://www.passapply.com/allproducts>

Need Help

Please provide as much detail as possible so we can best assist you.
To update a previously submitted ticket:



 <p>One Year Free Update Free update is available within One Year after your purchase. After One Year, you will get 50% discounts for updating. And we are proud to boast a 24/7 efficient Customer Support system via Email.</p>	 <p>Money Back Guarantee To ensure that you are spending on quality products, we provide 100% money back guarantee for 30 days from the date of purchase.</p>	 <p>Security & Privacy We respect customer privacy. We use McAfee's security service to provide you with utmost security for your personal information & peace of mind.</p>
---	---	--

Any charges made through this site will appear as Global Simulators Limited.
All trademarks are the property of their respective owners.
Copyright © passapply, All Rights Reserved.