



# 70-642<sup>Q&As</sup>

TS: Windows Server 2008 Network Infrastructure

## Pass Microsoft 70-642 Exam with 100% Guarantee

Free Download Real Questions & Answers **PDF** and **VCE** file from:

<https://www.passapply.com/70-642.html>

100% Passing Guarantee  
100% Money Back Assurance

Following Questions and Answers are all new published by Microsoft  
Official Exam Center

-  **Instant Download** After Purchase
-  **100% Money Back** Guarantee
-  **365 Days** Free Update
-  **800,000+** Satisfied Customers





### QUESTION 1

You need to use link-local IPv6 addresses to perform multicasting. Which IPv6 prefix should you use?

- A. FF00::/8
- B. FD00::/8
- C. FE80::/10
- D. FEC0::/10

Correct Answer: A

IPv6 multicast addresses have the first eight bits fixed at 1111 1111. Therefore the address prefix for all IPv6 multicast addresses is FF00::/8. Beyond the first eight bits, multicast addresses include additional structure to identify flags, their scope, and the multicast group. <http://technet.microsoft.com/en-us/library/bb726995.aspx>

---

### QUESTION 2

Your company has a main office and 15 branch offices. The company has a single Active Directory domain. All servers run Windows Server 2008 R2.

You need to ensure that the VPN connections between the main office and the branch offices meet the following requirements:

All data must be encrypted by using end-to-end encryption.

The VPN connection must use computer-level authentication.

User names and passwords cannot be used for authentication.

What should you do?

- A. Configure an IPsec connection to use tunnel mode and preshared key authentication.
- B. Configure a PPTP connection to use version 2 of the MS-CHAP v2 authentication.
- C. Configure a L2TP/IPsec connection to use the EAP-TLS authentication.
- D. Configure a L2TP/IPsec connection to use version 2 of the MS-CHAP v2 authentication.

Correct Answer: C

EAP-Transport Layer Security (EAP-TLS), defined in RFC 5216, is an IETF open standard, and is well supported among wireless vendors. The security of the TLS protocol is strong, provided the user understands potential warnings about false credentials. It uses PKI to secure communication to a RADIUS authentication server or another type of authentication server. So even though EAP-TLS provides excellent security, the overhead of client-side certificates may be its Achilles' heel. EAP-TLS is the original, standard wireless LAN EAP authentication protocol. Although it is rarely deployed, it is still considered one of the most secure EAP standards available and is universally supported by all manufacturers of wireless LAN hardware and software. The requirement for a client-side certificate, however unpopular



it may be, is what gives EAP-TLS its authentication strength and illustrates the classic convenience vs. security trade-off. A compromised password is not enough to break into EAP-TLS enabled systems because the intruder still needs to have the client-side private key. The highest security available is when client-side keys are housed in smart cards.[4] This is because there is no way to steal a certificate's corresponding private key from a smart card without stealing the card itself. It is significantly more likely that the physical theft of a smart card would be noticed (and the smart card immediately revoked) than a (typical) password theft would be noticed. Up until April 2005, EAP-TLS was the only EAP type vendors needed to certify for a WPA or WPA2 logo.[5] There are client and server implementations of EAP-TLS in 3Com, Apple, Avaya, Brocade Communications, Cisco, Enterasys Networks, Foundry, HP, Juniper, and Microsoft, and open source operating systems. EAP-TLS is natively supported in Mac OS X 10.3 and above, Windows 2000 SP4, Windows XP and above, Windows Mobile 2003 and above, and Windows CE 4.2

### QUESTION 3

Your network contains an Active Directory domain. The domain contains several VPN servers that have the Routing and Remote Access service (RRAS) role service installed.

You need to configure all of the VPN servers to use the same network policies. The solution must ensure that any changes to the network policies automatically apply to all of the VPN servers.

What should you configure on the VPN servers?

- A. connection request policies
- B. system health validators (SHVs)
- C. IKEv2 client connections
- D. health policies
- E. the RADIUS Accounting accounting provider
- F. the RADIUS Authentication authentication provider
- G. the Windows Accounting accounting provider
- H. Group Policy preferences
- I. the Windows Authentication authentication provider
- J. remediation server groups

Correct Answer: F

### QUESTION 4

Your network contains an Active Directory domain named litwareinc.com. All domain controllers and servers run Windows Server 2008 R2 Service Pack 1 (SP1). A domain controller named DC1 hosts a primary zone for litwareinc.com. You have two servers named Server1 and Server2. Both servers host the same website. Server1 is located on a subnet named Subnet1. Server2 is located on a subnet named Subnet2. You create two host (A) records for web.litwareinc.com. One record points to the IP address of Server1. The other record points to the IP address of Server2. All users access the website by using the URL http:// web.litwareinc.com.

You discover that the client computers on Subnet1 always connect to Server1 when they access the URL



<http://web.litwareinc.com>.

You need to ensure that all of the client computers are distributed randomly between Server1 and Server2 when accessing the URL <http://web.litwareinc.com>. What should you do?

- A. Modify the time-to-live (TTL) value for the A records of Server1.litwareinc.com and server1.litwareinc.com.
- B. Disable DNS round robin on DC1.
- C. Disable netmask ordering on DC1.
- D. Modify the time-to-live (TTL) value for the A records ofweb.litwareinc.com.

Correct Answer: C

Round robin: Determines whether the DNS server uses the round robin mechanism to rotate and reorder a list of resource records if multiple resource records exist of the same type that exist for a query answer. By default, the DNS Server

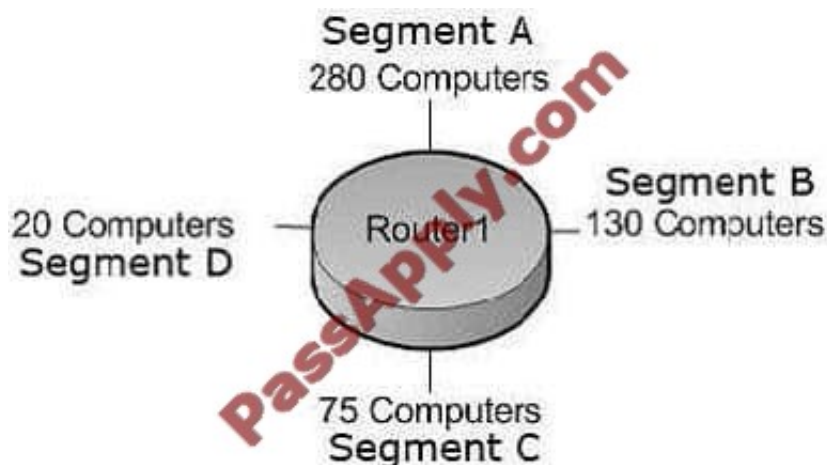
service uses round robin. Netmask ordering: Determines whether the DNS server reorders address (A) resource records within the same resource record that is set in the server's response to a query based on the Internet Protocol (IP)

address of the source of the query.By default, the DNS Server service uses local subnet priority to reorder A resource records.

[http://technet.microsoft.com/en-us/library/cc757837\(v=ws.10\).aspx](http://technet.microsoft.com/en-us/library/cc757837(v=ws.10).aspx)

## QUESTION 5

Your company is designing its public network. The network will use an IPv4 range of 131.107.40.0/22. The network must be configured as shown in the following exhibit.



You need to configure subnets for each segment. Which network addresses should you assign?

- A. Segment A: 131.107.40.0/23 Segment B: 131.107.42.0/24 Segment C: 131.107.43.0/25 Segment D: 131.107.43.128/27
- B. Segment A: 131.107.40.0/25 Segment B: 131.107.40.128/26 Segment C: 131.107.43.192/27 Segment D:



131.107.43.224/30

C. Segment A: 131.107.40.0/23 Segment B: 131.107.41.0/24 Segment C: 131.107.41.128/25 Segment D: 131.107.43.0/27

D. Segment A: 131.107.40.128/23 Segment B: 131.107.43.0/24 Segment C: 131.107.44.0/25 Segment D: 131.107.44.128/27

Correct Answer: A

1: The corresponding CIDR notation prefix length is /22.

2: The next multiple of 8 that is greater than 22 is 24. Octet 3 is interesting.

3:  $24 - 22 = 2$ , so the increment is  $2^2 = 4$ .

4: The increments in the third octet are 0,4,8,12,16,20,24,28,32,36,40,44,46, and so on.

---

### QUESTION 6

Your network contains an Active Directory domain. The domain contains a print server named Server1. Server1 runs Windows Server 2008 R2.

You need to ensure that users can locate all shared printers on Server1 by using Active Directory. What should you do from Server1?

- A. Run the pubprn.vbs script.
- B. Run dism.exe.
- C. Run the Set-ADObject cmdlet.
- D. Modify the Print Server properties.

Correct Answer: A

The script pubprn.vbs publishes a printer to the Active Directory Domain Services.

---

### QUESTION 7

Your company has a main office and a branch office. The main office has a domain controller named MAIN1 that hosts a DNS primary zone. The branch office has a DNS server named BRANCH1 that hosts a DNS secondary zone. All client

computers are configured to use their local server for DNS resolution. You change the IP address of an existing server named FILE1 in the main office. You need to ensure that BRANCH1 reflects the change immediately.

What should you do?

- A. Run the dnscmd command by using the /zonerefresh option on MAIN1.
- B. set the refresh interval to 10 minutes on the Start of Authority (SOA) record.



- C. Restart the DNS Server service on MAIN1.
- D. Run the dnscmd command by using the/zonerefresh option on BRANCH1.

Correct Answer: D

---

### QUESTION 8

You need to add a reservation for a print device to a DHCP scope. Which two components should you include in the reservation? (Each correct answer presents part of the solution. Choose two.)

- A. the default gateway
- B. the IP address
- C. the MAC address
- D. the printer server name
- E. the subnet mask

Correct Answer: BC

A reservation reserves an IP address based on the MAC address.

---

### QUESTION 9

Your company has a single Active Directory domain. The company network is protected by a firewall. Remote users connect to your network through a VPN server by using PPTP. When the users try to connect to the VPN server, they receive

the following error message:

"Error 721: The remote computer is not responding."

You need to ensure that users can establish a VPN connection.

What should you do?

- A. Open port 1423 on the firewall.
- B. Open port 1723 on the firewall.
- C. Open port 3389 on the firewall.
- D. Open port 6000 on the firewall.

Correct Answer: B

[http://technet.microsoft.com/en-us/library/cc757501\(v=ws.10\).aspx](http://technet.microsoft.com/en-us/library/cc757501(v=ws.10).aspx)

---



#### QUESTION 10

You have a virtual machine named VM1. VM1 uses a VHD file named Vml.vhd. A critical error occurs on VM1 that prevents the operating system on VM1 from starting. You need to mount Vml.vhd on a server that runs Windows Server 2008

R2 Service Pack 1 (SP1).

Which tool should you use?

- A. Share and Storage Management
- B. Mountvol
- C. Storage Explorer
- D. Disk Management

Correct Answer: D

<http://technet.microsoft.com/en-us/library/bb490934.aspx>

---

#### QUESTION 11

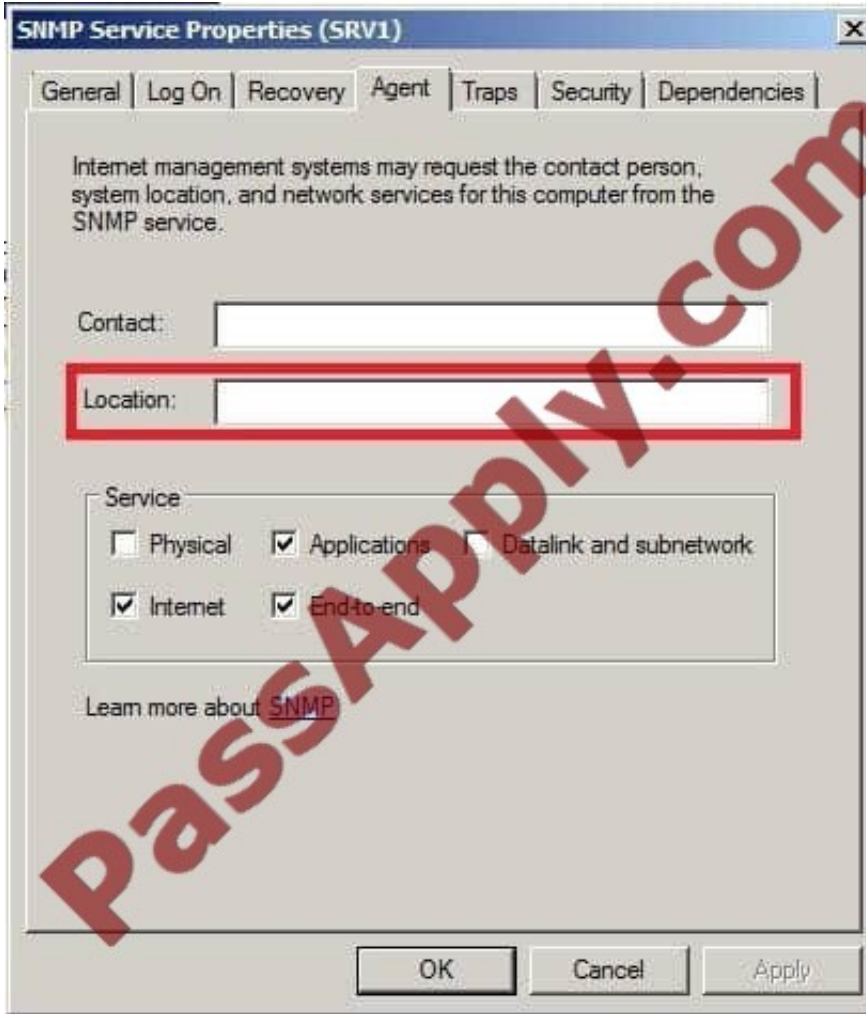
Your network contains a server named Server1 that runs Windows Server 2008 R2. Server1 has the SNMP Service installed. You perform an SNMP query against Server1 and discover that the query returns the incorrect identification information.

You need to change the identification information returned by Server1.

What should you do?

- A. From the properties of the SNMP Service, modify the Agent settings.
- B. From the properties of the SNMP Service, modify the General settings.
- C. From the properties of the SNMP Trap Service, modify the Logon settings.
- D. From the properties of the SNMP Trap Service, modify the General settings.

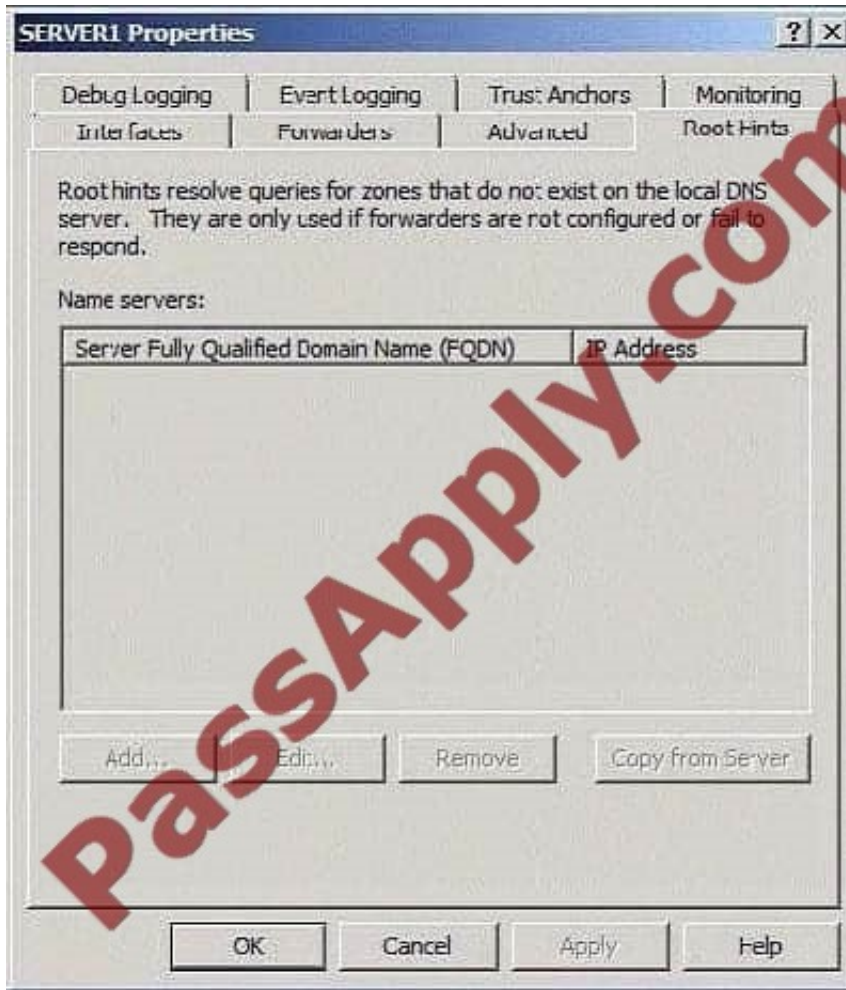
Correct Answer: A



## QUESTION 12

Your network contains a DNS server named Server1 that runs Windows Server 2008 R2. Root hints for Server1 are configured as shown in the exhibit. (Click the Exhibit button.)





You need to add root hints to Server1. What should you do first?

- A. Disable recursion.
- B. Delete the "." (root) zone.
- C. Restart the DNS Server service.
- D. Remove all conditional forwarders.

Correct Answer: B

[70-642 PDF Dumps](#)

[70-642 VCE Dumps](#)

[70-642 Study Guide](#)



To Read the [Whole Q&As](#), please purchase the [Complete Version](#) from [Our website](#).

## Try our product !

100% Guaranteed Success  
100% Money Back Guarantee  
365 Days Free Update  
Instant Download After Purchase  
24x7 Customer Support  
Average 99.9% Success Rate  
More than 800,000 Satisfied Customers Worldwide  
Multi-Platform capabilities - [Windows](#), [Mac](#), [Android](#), [iPhone](#), [iPod](#), [iPad](#), [Kindle](#)

We provide exam PDF and VCE of Cisco, Microsoft, IBM, CompTIA, Oracle and other IT Certifications.  
You can view Vendor list of All Certification Exams offered:

<https://www.passapply.com/allproducts>

## Need Help

Please provide as much detail as possible so we can best assist you.  
To update a previously submitted ticket:



 <p><b>One Year Free Update</b> Free update is available within One Year after your purchase. After One Year, you will get 50% discounts for updating. And we are proud to boast a 24/7 efficient Customer Support system via Email.</p>	 <p><b>Money Back Guarantee</b> To ensure that you are spending on quality products, we provide 100% money back guarantee for 30 days from the date of purchase.</p>	 <p><b>Security &amp; Privacy</b> We respect customer privacy. We use McAfee's security service to provide you with utmost security for your personal information &amp; peace of mind.</p>
---	---	--

Any charges made through this site will appear as Global Simulators Limited.  
All trademarks are the property of their respective owners.  
Copyright © passapply, All Rights Reserved.