



# 70-467<sup>Q&As</sup>

Designing Business Intelligence Solutions with Microsoft SQL Server

## Pass Microsoft 70-467 Exam with 100% Guarantee

Free Download Real Questions & Answers **PDF** and **VCE** file from:

<https://www.passapply.com/70-467.html>

100% Passing Guarantee  
100% Money Back Assurance

Following Questions and Answers are all new published by Microsoft  
Official Exam Center

-  **Instant Download** After Purchase
-  **100% Money Back** Guarantee
-  **365 Days** Free Update
-  **800,000+** Satisfied Customers





### QUESTION 1

You are designing an extract, transform, load (ETL) process for loading data from a SQL Azure database into a large fact table in a data warehouse each day with the prior day's sales data.

The ETL process for the fact table must meet the following requirements:

Load new data in the shortest possible time.

Remove data that is more than 36 months old.

Minimize record locking.

Minimize impact on the transaction log.

You need to design an ETL process that meets the requirements.

What should you do?(More than one answer choice may achieve the goal. Select the BEST answer.)

- A. Partition the fact table by date. Insert new data directly into the fact table and delete old data directly from the fact table.
- B. Partition the fact table by customer. Use partition switching both to remove old data and to load new data into each partition.
- C. Partition the fact table by date. Use partition switching and staging tables both to remove old data and to load new data.
- D. Partition the fact table by date. Use partition switching and a staging table to remove old data. Insert new data directly into the fact table.

Correct Answer: C

---

### QUESTION 2

You deploy a PowerPivot workbook to a document library in a Microsoft SharePoint site. Workbook data comes from two different sources: Source A and Source B.

The workbook contains three small lookup tables from Source A, and five tables with a total of 20 million rows from Source B. Data from Source A is updated at 9:00 A.M. and data from Source B is updated throughout the day.

You have the following requirements:

Refresh the PowerPivot workbook with updated lookup data as soon as possible. Minimize load on the source systems and the SharePoint environment during business hours.

Minimize user involvement in the data refresh process.

You enable automatic data refresh for the workbook.

You need to configure a data refresh schedule for the workbook that meets the requirements.



What should you do(More than one answer choice may achieve the goal. Select the BEST answer.)

- A. Set the default schedule to refresh outside of business hours. Do not manually refresh the workbook.
- B. Set the default schedule to refresh outside of business hours. Manually refresh the workbook at 9:00 A.M. every day.
- C. Set the default schedule to refresh at 9:00 A.M. every day. Create a separate schedule for Source B\'\'s connection to refresh outside of business hours.
- D. Set the default schedule to refresh at 3:00 P.M. every day. Do not create individual source schedules.
- E. Set the default schedule to refresh at 9:00 A.M. every day. Do not create individual source schedules.

Correct Answer: C

### QUESTION 3

DRAG DROP

You are designing a SQL Server Reporting Services (SSRS) solution.

A report project must access multiple SQL Azure databases. Each database is on a different host. The databases have identical schema and security configurations.

You have the following requirements:

The report must support subscriptions.

Users must be able to select the host when running the report.

What should you do?

To answer, drag the appropriate phrase or phrases from the list to the correct location or locations in the answer area. (Answer choices may be used once, more than once, or not all.)

Select and Place:

SQL Azure data.	Create a <input style="width: 150px;" type="text"/>
SQL Azure hosts.	Create a report parameter that displays available values of <input style="width: 150px;" type="text"/>
a shared dataset.	Create <input style="width: 150px;" type="text"/>
stored credentials.	Configure the data source to use <input style="width: 150px;" type="text"/>
integrated security.	
data source in the report.	
an expression-based connection string.	
shared data source in the report.	

Correct Answer:



The screenshot shows a sequence of steps in a report designer for configuring a data source:

- SQL Azure data.
- a shared dataset.
- integrated security.
- shared data source in the report

On the right side, the steps are described with highlighted text boxes:

- Create a data source in the report.
- Create a report parameter that displays available values of SQL Azure hosts.
- Create an expression-based connection string.
- Configure the data source to use stored credentials.

Note:

\*

To include data in a report, you must first create data connections, also known as data sources, and then create datasets.

\*

A data connection includes the data source type, connection information, and the type of credentials to use. There are two types of data sources: embedded and shared. An embedded data source is defined in the report and used only by that report (fits this scenario). A shared data source is defined independently from a report and can be used by multiple reports.

\*

Built-in data extensions include the following data connection types:

Microsoft SQL Server Microsoft SQL Server Analysis Services Microsoft SharePoint List Windows Azure SQL Database

Etc.

\*

Expression-based connection strings are evaluated at run time. For example, you can specify the data source as a parameter, include the parameter reference in the connection string, and allow the user to choose a data source for the report.

\*

Credentials You provide the credentials that are needed to access the data. The data source owner must have granted you the appropriate permissions to access both the data source and the specific data on the data source.

Reference: Data Connections, Data Sources, and Connection Strings (SSRS)

#### QUESTION 4

You need to choose the appropriate key to use when designing a dimension table based on the Customer table. What should you do?



- A. Use a surrogate key.
- B. Use a natural key.
- C. Use the CustomerNumber column as the key.
- D. Concatenate the CustomerName and CustomerNumber columns and use the concatenated string as the key.
- E. Use the CustomerName column as the key.

Correct Answer: A

---

#### QUESTION 5

You need to implement the aggregation designs for the cube. What should you do?

- A. Use the CREATE CACHE statement.
- B. Use the Aggregation Design Wizard.
- C. Create relational indexes on the source tables.
- D. Use the Usage-Based Optimization Wizard.

Correct Answer: B

---

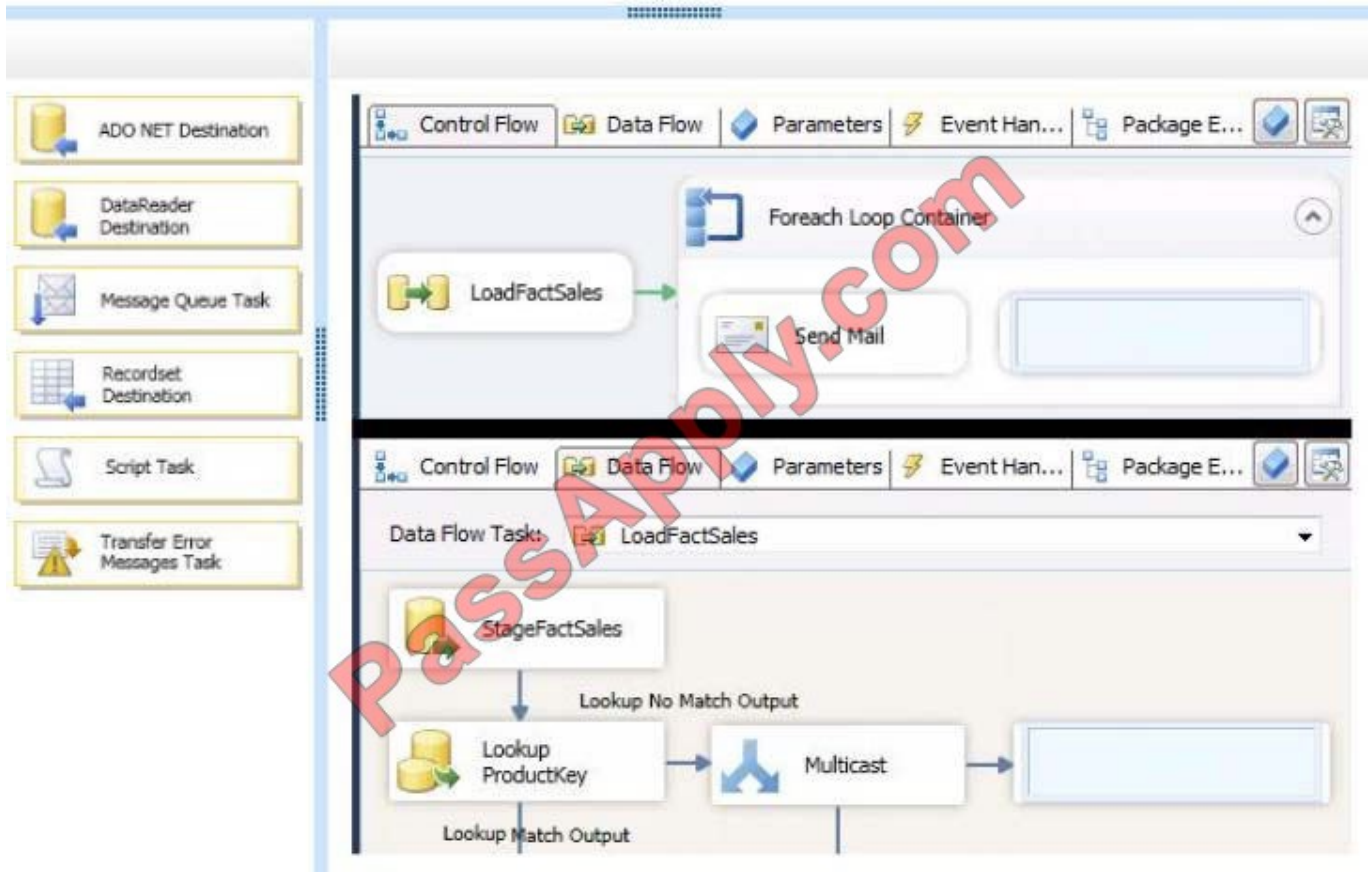
#### QUESTION 6

DRAG DROP

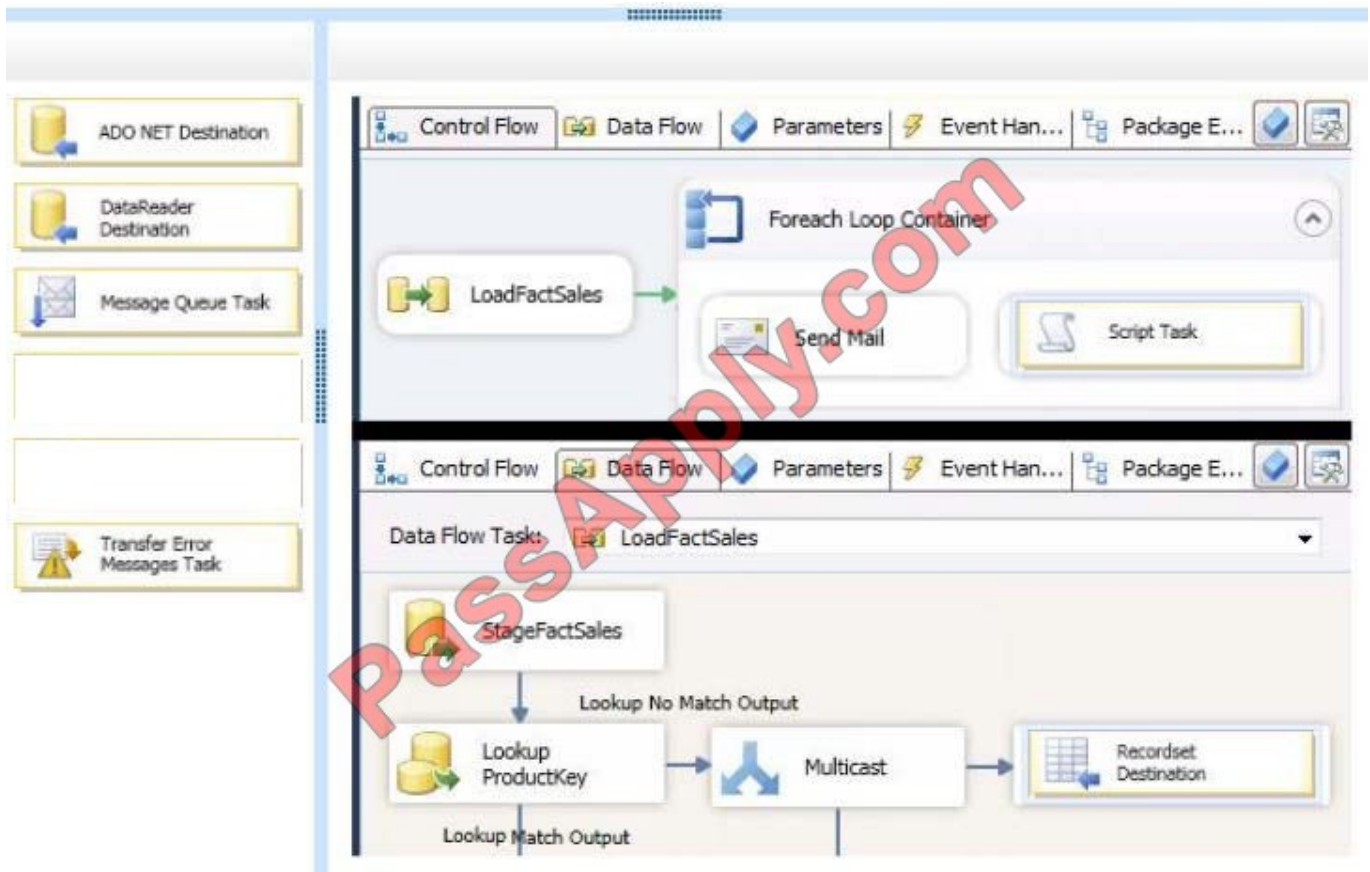
You need to develop the LoadFactSales package to write the error messages to the SSIS catalog log.

Which components should you use? To answer, drag the appropriate components to the correct location or locations in the answer area. (Use only components that apply.)

Select and Place:



Correct Answer:



### QUESTION 7

You are creating the Australian postal code query.

Which arguments should you use to complete the query?

To answer, drag the appropriate arguments to the correct location or locations in the answer area. (Use only arguments that apply.)

Select and Place:



**Arguments**

AFTER

ASC

BASC

BDESC

BEFORE

DESC

LEAVES

SELF

**Answer area**

```
SELECT
  {[Measures].[Sales Amount]} ON COLUMNS,
ORDER(
  DESCENDANTS([Customer].[Geography].[Australia],
    [Customer].[Geography].[Post Code] Argument ),
  [Measures].[Sales Amount], Argument ) ON ROWS
FROM
  [Sales]
WHERE
  ([Date].[Fiscal].[FY2012])
```

Correct Answer:

**Arguments**

AFTER

ASC

BASC

BDESC

BEFORE

DESC

LEAVES

SELF

**Answer area**

```
SELECT
  {[Measures].[Sales Amount]} ON COLUMNS,
ORDER(
  DESCENDANTS([Customer].[Geography].[Australia],
    [Customer].[Geography].[Post Code] BDESC ),
  [Measures].[Sales Amount], DESC ) ON ROWS
FROM
  [Sales]
WHERE
  ([Date].[Fiscal].[FY2012])
```

QUESTION 8





You need to configure package execution logging to meet the requirements. What should you do?

- A. Configure logging in each ETL package to log the OnError, OnInformation, and Diagnostic events.
- B. Set the SSIS catalog's Server-wide Default Logging Level property to Performance. C set the SSIS catalog's Server-wide Default Logging Level property to Basic.
- C. Set the SSIS catalog's Server-wide Default Logging Level property to Verbose.
- D. Configure logging in each ETL package to log the OnError, OnPreExecute, and OnPostExecute events.

Correct Answer: B

---

#### QUESTION 9

You execute the SalesbyCategory report and receive the following error message:

"Members, tuples, or sets must use the same hierarchies in the function."

You need to ensure that the query executes successfully.

Which two actions should you perform? Each correct answer presents part of the solution.

- A. Move the Product clause from line 08 to line 10.
- B. Move the Date and Product clauses on line 11 to axis 0.
- C. Move the Date clause from line 10 to line 08.
- D. Move the Measures clause on line 02 to axis 1.

Correct Answer: C

---

#### QUESTION 10

You have a Microsoft SharePoint Server 2013 deployment that contains a PowerPivot service application and a site that has a PowerPivot Gallery.

You need to recommend a solution to provide users with the ability to monitor usage and service health by using the built-in PowerPivot Management Dashboard. The solution must use the principle of least privilege.

Which permissions should you assign to the users?

- A. Owners for the site
- B. Site Collection Administrators
- C. Farm Administrators



D. Contribute for the PowerPivot Gallery

Correct Answer: A

### QUESTION 11

#### HOTSPOT

A SQL Server Analysis Services (SSAS) cube contains billions of rows of data and is rapidly increasing in size. The cube consists of a single measure group and a single partition. The cube is currently processed by using the Process Full

process option.

You have the following requirements to reduce the cube processing time:

Partition the measure group by month.

Create a staging table that contains only data which is more recent than the last time the cube was processed.

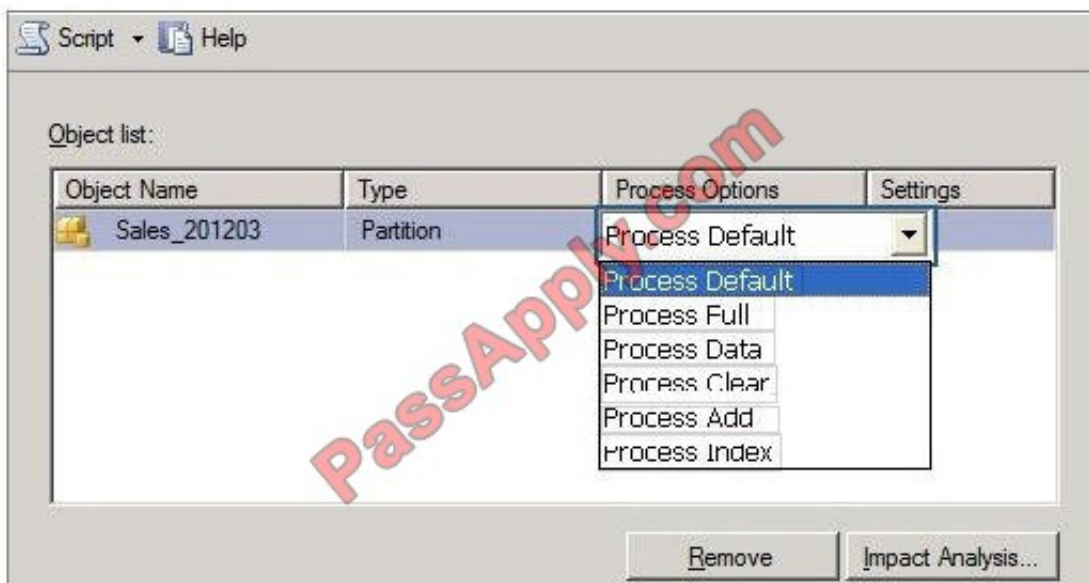
Do not include data updates or deletions in the staging table.

Insert records from the staging table into the appropriate partition.

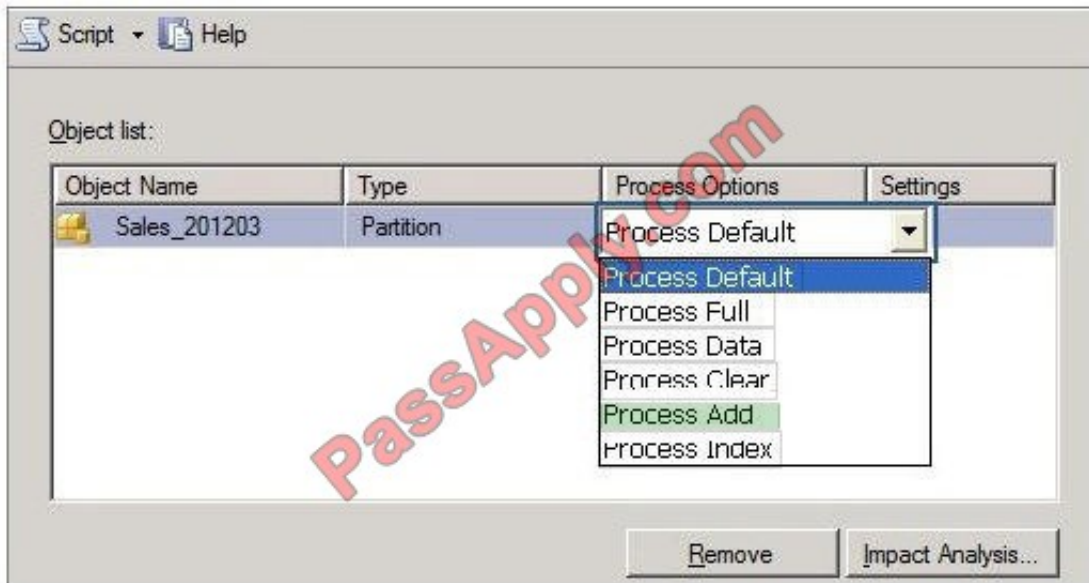
You need to change the process option to meet the requirements.

Which process option should you choose? To answer, select the appropriate option from the drop-down list in the dialog box.

Hot Area:



Correct Answer:



Note:

ProcessAdd

ProcessAdd applies only to dimensions and partitions.

ProcessAdd is a new processing option for dimensions that did not exist in Analysis Services 2000. It essentially optimizes ProcessUpdate for the scenario where only new members are added.

ProcessAdd never deletes or updates existing members. It only adds new members. The user can restrict the dimension table so that ProcessAdd reads only the new rows.

ProcessAdd for partitions is the equivalent of incremental partition processing in Analysis Services 2000. The user typically specifies an alternate fact table or a filter condition pointing to the new rows. ProcessAdd internally creates a temporary partition, processes it with the specified fact data, and merges it into the target partition.

Reference: Analysis Services 2005 Processing Architecture

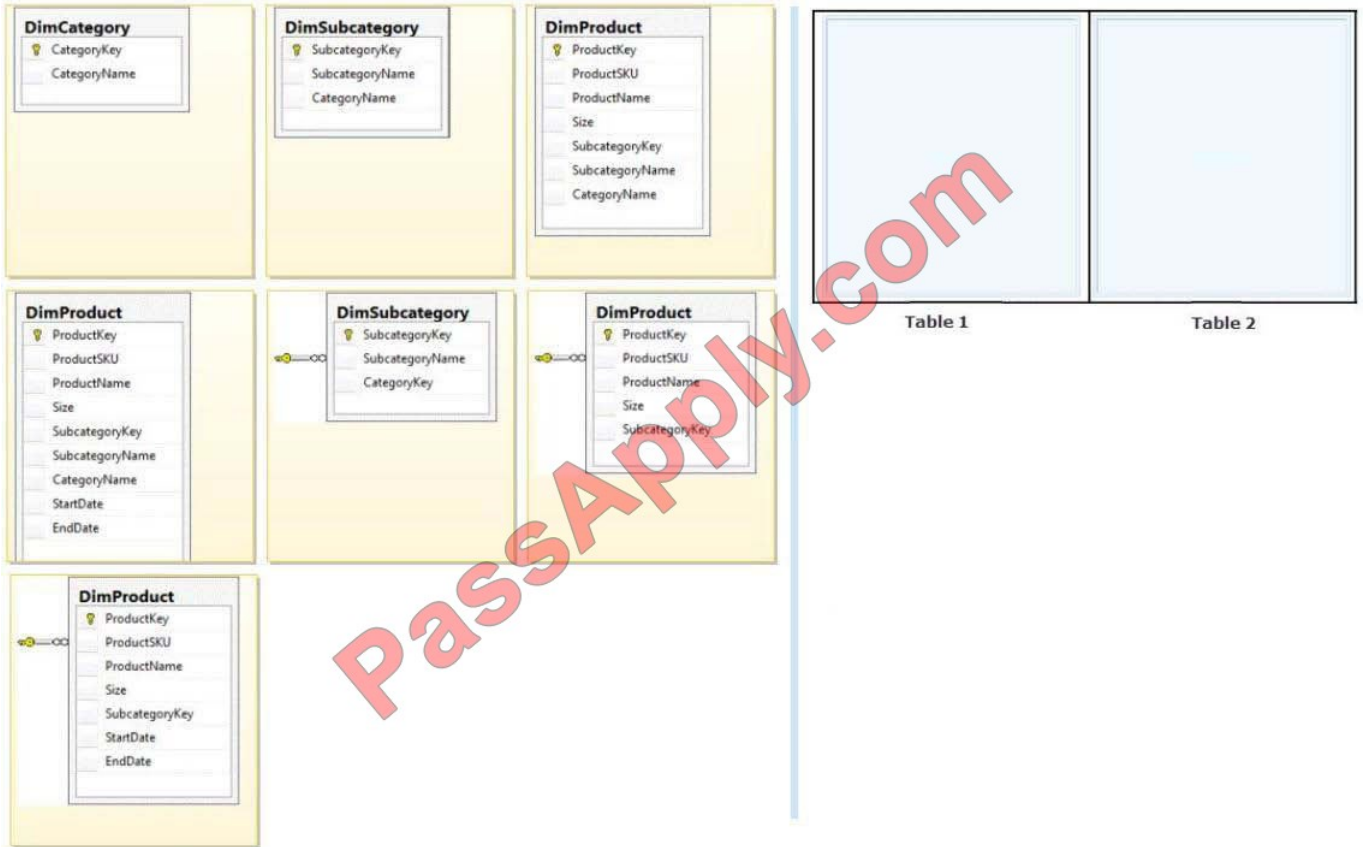
## QUESTION 12

DRAG DROP

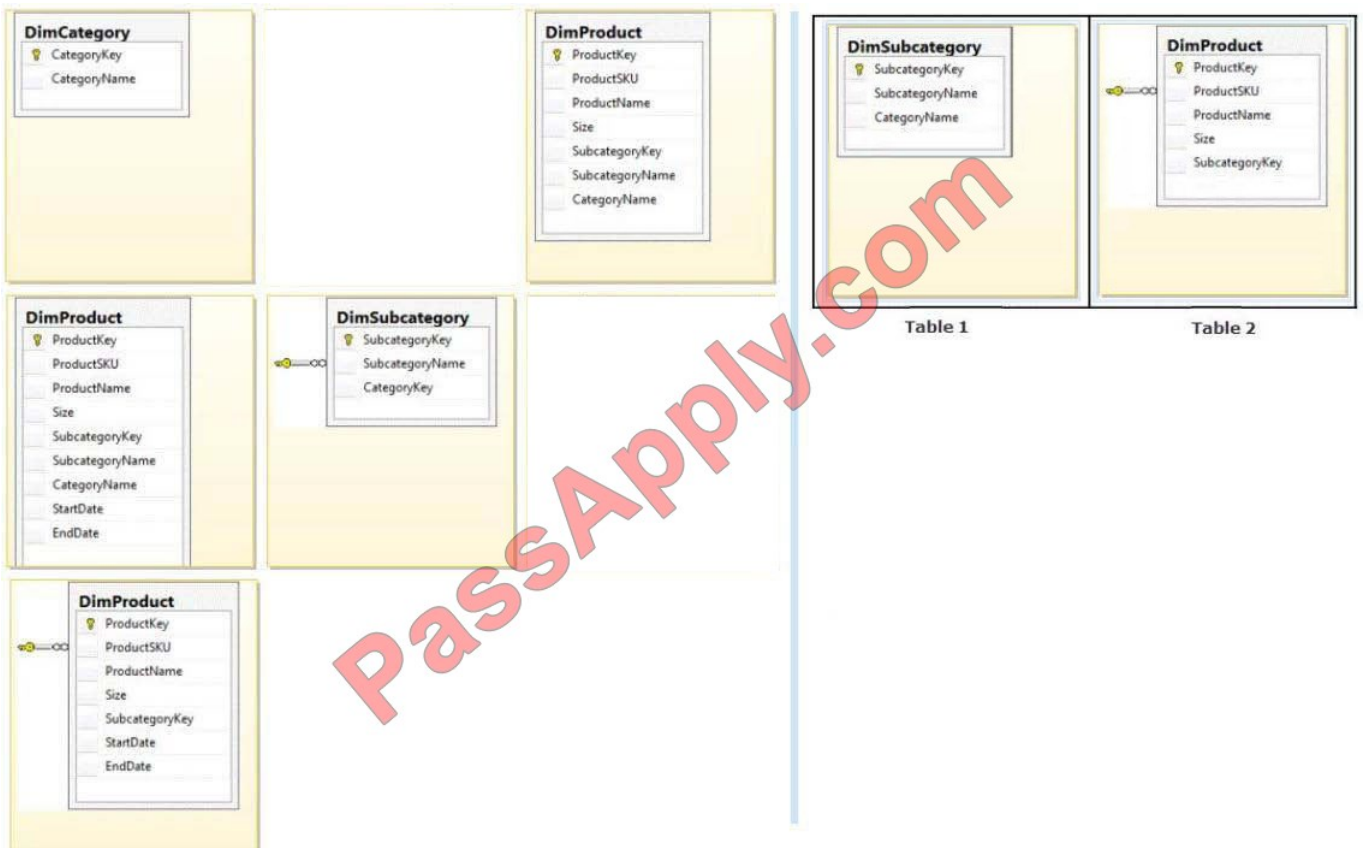
You need to extend the schema design to store the product dimension data.

Which design should you use To answer, drag the appropriate table or tables to the correct location or locations in the answer area. (Fill from left to right. Answer choices may be used once, more than once, or not all.)

Select and Place:



Correct Answer:





\*

From scenario:

/ The schema design must be extended to include the product dimension data.

\*

DimProduct table need to contain a foreign key to the DimSubCategory table. No further SubCategory data should be stored in the DimProduct table.

\*

No time related columns (StartDate, EndDate) should be included in the DimProduct table.

[Latest 70-467 Dumps](#)

[70-467 PDF Dumps](#)

[70-467 Practice Test](#)



To Read the [Whole Q&As](#), please purchase the [Complete Version](#) from [Our website](#).

## Try our product !

100% Guaranteed Success  
100% Money Back Guarantee  
365 Days Free Update  
Instant Download After Purchase  
24x7 Customer Support  
Average 99.9% Success Rate  
More than 800,000 Satisfied Customers Worldwide  
Multi-Platform capabilities - [Windows](#), [Mac](#), [Android](#), [iPhone](#), [iPod](#), [iPad](#), [Kindle](#)

We provide exam PDF and VCE of Cisco, Microsoft, IBM, CompTIA, Oracle and other IT Certifications. You can view Vendor list of All Certification Exams offered:

<https://www.passapply.com/allproducts>

## Need Help

Please provide as much detail as possible so we can best assist you.  
To update a previously submitted ticket:



 <p><b>One Year Free Update</b> Free update is available within One Year after your purchase. After One Year, you will get 50% discounts for updating. And we are proud to boast a 24/7 efficient Customer Support system via Email.</p>	 <p><b>Money Back Guarantee</b> To ensure that you are spending on quality products, we provide 100% money back guarantee for 30 days from the date of purchase.</p>	 <p><b>Security &amp; Privacy</b> We respect customer privacy. We use McAfee's security service to provide you with utmost security for your personal information &amp; peace of mind.</p>
---	---	--

Any charges made through this site will appear as Global Simulators Limited.  
All trademarks are the property of their respective owners.  
Copyright © passapply, All Rights Reserved.