



70-460^{Q&As}

Transition Your MCITP: Business Intelligence Developer 2008 to
MCSE: Business Intelligence

Pass Microsoft 70-460 Exam with 100% Guarantee

Free Download Real Questions & Answers **PDF** and **VCE** file from:

<https://www.passapply.com/70-460.html>

100% Passing Guarantee
100% Money Back Assurance

Following Questions and Answers are all new published by Microsoft
Official Exam Center

-  **Instant Download** After Purchase
-  **100% Money Back** Guarantee
-  **365 Days** Free Update
-  **800,000+** Satisfied Customers





QUESTION 1

You are designing a SQL Server Reporting Services (SSRS) report to display vineyard names and their year-to-date (YTD) grape yield. Grape yield values are classified in three bands:

High Yield

Medium Yield

Low Yield

You add a table to the report. Then you define two columns based on the fields named VineyardName and YTDGrapeYield.

You need to set the color of the vineyard text to red, yellow, or blue, depending on the value of the YTD grape yield values.

What should you do?

A.

Use an expression for the Font property of the vineyard text box.

B.

Add an indicator to the table.

C.

Use an expression for the TextDecoration property of the vineyard text box.

D.

Use an expression for the Color property of the vineyard text box.

E.

Use an expression for the Style property of the vineyard text box.

Correct Answer: D

QUESTION 2

You are designing a dataset for a SQL Server Reporting Services (SSRS) report. The report includes the report items displayed in the following graphic.



The dataset is sourced from a commonly used stored procedure in an inventory data mart hosted in a SQL Azure database.

It returns the status for all products across all storage sites. The report must display data for the storage site that is selected by the Site report parameter. You cannot change the stored procedure code.

You need to filter the dataset to use only data specific to the selected site.

How should you configure the filter?

To answer, drag the appropriate expression or expressions to the correct location or locations in the answer area. (Answer choices may be used once, more than once, or not all.)

Select and Place:

Change filters.

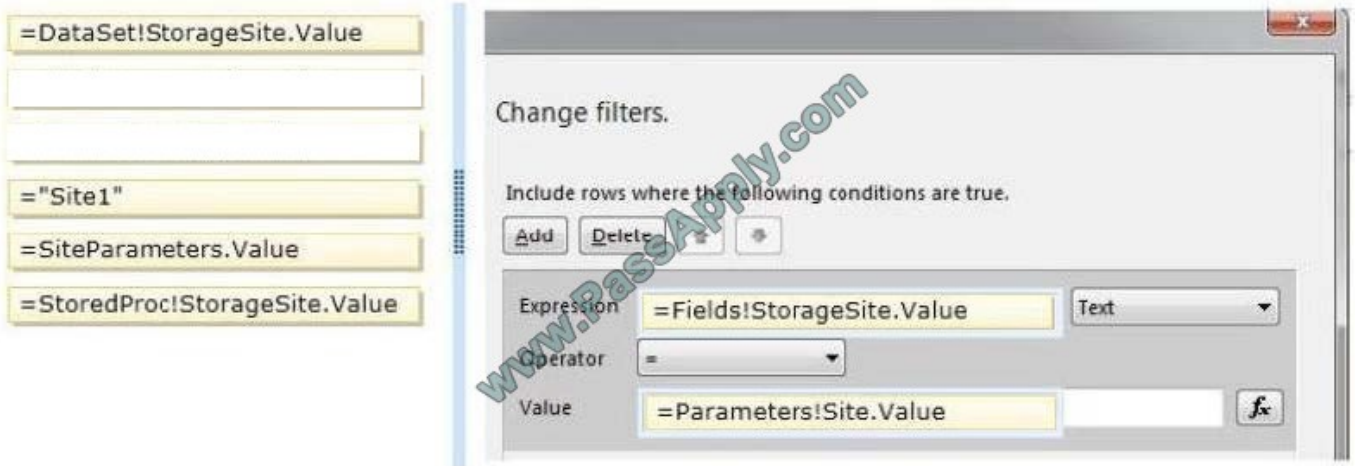
Include rows where the following conditions are true.

Expression

Operator

Value

Correct Answer:



QUESTION 3

You are creating a new report in SQL Server Report Builder. You add a Windows Azure SQL Database data source. Then you add a dataset that has four fields named Year, Country, Category, and Sales. You must design a matrix as shown in the following table.

| | CY 2003 | CY2004 |
|----------------|-----------|-----------|
| Accessories | 293,710 | 407,050 |
| Bikes | 9,359,103 | 9,162,325 |
| Clothing | 138,248 | 201,525 |
| Australia | 3,033,784 | 2,563,884 |
| Canada | 535,784 | 673,628 |
| France | 1,026,325 | 922,179 |
| Germany | 1,058,406 | 1,076,891 |
| United Kingdom | 1,298,249 | 1,210,286 |
| United States | 2,838,512 | 3,324,031 |
| Total | 9,791,060 | 9,770,900 |

The category rows (the first three rows as shown in the diagram) must present total sales amount by category. The country rows (the next six rows as shown in the diagram) must present total sales amount by country. The total row must

present the total sales for each year.

You add a matrix to the report. You add a grouping of the Country field on the rows and a grouping of the Year field on the columns.

You need to add the categories on the rows of the matrix. Which Row Group option should you select when you add the group?

- A. Adjacent Below
- B. Child Group



- C. Parent Group
- D. Adjacent Above

Correct Answer: A

QUESTION 4

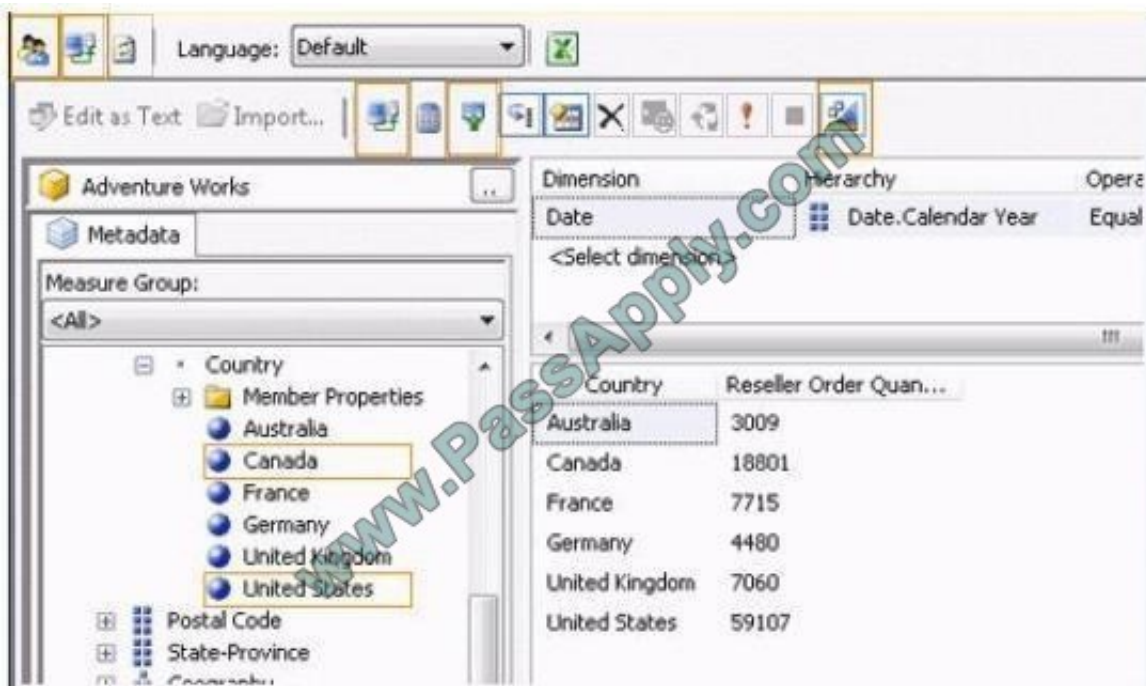
A SQL Server Analysis Services (SSAS) cube has roles to define dimension data security. A role named USA allows users to browse data pertaining to the United States. A role named Canada allows users to browse data pertaining to Canada.

A user can browse sales data pertaining to the United States but cannot browse sales data pertaining to Canada. You validate that the user belongs to the USA and Canada roles.

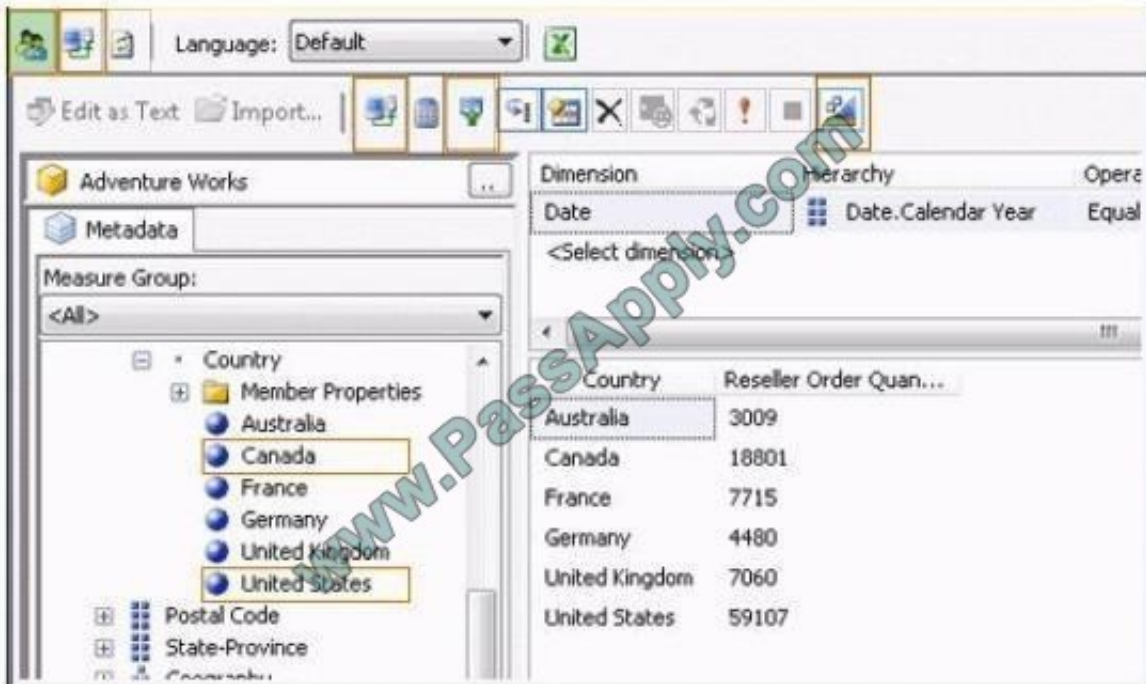
You need to reproduce the issue in SQL Server Management Studio (SSMS).

Which option should you select? To answer, select the appropriate action in the answer area.

Hot Area:



Correct Answer:



QUESTION 5

You have an OLAP cube named Cube1. Cube1 has two partitions named partition1 and partition2. You need to configure the storage mode for each cube partition.

The solution must meet the following requirements:

Users must be able to retrieve aggregate data from partition1 as quickly as possible.

The processing time for partition1 and partition2 must be minimized.

The least possible amount of storage must be used for partition2.

What should you do? To answer, select the appropriate storage mode for each partition in the answer area.

Answer Area

| Partition1 | Partition2 |
|----------------------|----------------------|
| <input type="text"/> | <input type="text"/> |

Hot Area:



Answer Area

| Partition1 | Partition2 |
|----------------------|----------------------|
| <input type="text"/> | <input type="text"/> |
| MOLAP | MOLAP |
| ROLAP | ROLAP |
| HOLAP | HOLAP |

Correct Answer:

Answer Area

| Partition1 | Partition2 |
|----------------------|----------------------|
| <input type="text"/> | <input type="text"/> |
| MOLAP | MOLAP |
| ROLAP | ROLAP |
| HOLAP | HOLAP |

QUESTION 6

You are designing a SQL Server Reporting Services (SSRS) report based on a SQL Server Analysis Services (SSAS) cube.

The cube contains a Key Performance Indicator (KPI) to show if a salesperson's sales are off target, slightly off target, or on target.

You need to add a report item that visually displays the KPI status value as a red, yellow, or green circle.

Which report item should you add?

- A. Data Bar
- B. Sparkline
- C. Indicator
- D. Radial Gauge
- E. Linear Gauge

Correct Answer: C

QUESTION 7



You are developing a SQL Server Analysis Services (SSAS) tabular project.

The model includes a table named Dim Employee. The table contains employee details, including the sales territory for each employee. The table also defines a column named EmployeeAlias which contains the Active Directory Domain

Services (AD DS) domain and logon name for each employee. You create a role named Employees.

You need to configure the Employees roles so that users can query only sales orders for their respective sales territory.

What should you do?

- A. Add a row filter that implements the LOOKUPVALUE and USERNAME functions.
- B. Add a row filter that implements only the CUSTOMDATA function.
- C. Add a row filter that implements the LOOKUPVALUE and CUSTOMDATA functions.
- D. Add a row filter that implements only the USERNAME function.

Correct Answer: A

QUESTION 8

You are creating a Multidimensional Expressions (MDX) calculation for Projected Revenue in a cube.

For Customer A, Projected Revenue is defined as 150 percent of the Total Sales for the customer. For all other customers, Projected Revenue is defined as 110 percent of the Total Sales for the customer.

You need to calculate the Projected Revenue as efficiently as possible.

Which calculation should you use? (More than one answer choice may achieve the goal. Select the BEST answer.)



- A.

```
CREATE MEMBER CurrentCube.[Measures].[Projected Revenue]
AS CASE WHEN [Customer].[Customer Name].CurrentMember.Name = "Customer A"
THEN [Measures].[Total Sales] * 1.5
ELSE [Measures].[Total Sales] * 1.1 END
```
- B.

```
CREATE MEMBER CurrentCube.[Measures].[Projected Revenue]
AS [Measures].[Total Sales];
SCOPE ([Customer].[Customer Name].MEMBERS, [Measures].[Projected Revenue]);
  [Measures].[Total Sales] * 1.1;
  IF [Customer].[Customer Name].CurrentMember.Name = "Customer A"
    THEN [Measures].[Total Sales] * 1.5
  END IF;
END SCOPE;
```
- C.

```
CREATE MEMBER CurrentCube.[Measures].[Projected Revenue]
AS [Measures].[Total Sales] * 1.1;
SCOPE ([Customer].[Customer Name].MEMBERS, [Measures].[Projected Revenue]);
  [Customer].[Customer Name].&[Customer A] = [Measures].[Total Sales] * 1.5;
END SCOPE;
```
- D.

```
CREATE MEMBER CurrentCube.[Measures].[Projected Revenue]
AS [Measures].[Total Sales] * 1.1;
SCOPE ([Customer].[Customer Name].&[Customer A], [Measures].[Projected Revenue]);
  THIS = [Measures].[Total Sales] * 1.5;
END SCOPE;
```

- A. Option A
B. Option B
C. Option C
D. Option D

Correct Answer: C

QUESTION 9

You are developing a SQL Server Analysis Services (SSAS) cube.

You need to reuse a Revenue measure group from a different database.

In SQL Server Data Tools (SSDT), which three actions should you perform in sequence? (To answer, move the appropriate actions from the list of actions to the answer area and arrange them in the correct order.)

Select and Place:



From the **Select a Data Source** step, reference the Analysis Services data source.

Launch the Linked Object Wizard.

From the **Select Objects** step, select the Revenue measure group and the dimensions that you need to link.

Launch the Business Intelligence Wizard.

From the **Select Objects** step, select the Revenue measure group that you need to link.

Correct Answer:

Empty text box

Empty text box

Empty text box

Launch the Business Intelligence Wizard.

From the **Select Objects** step, select the Revenue measure group that you need to link.

Launch the Linked Object Wizard.

From the **Select a Data Source** step, reference the Analysis Services data source.

From the **Select Objects** step, select the Revenue measure group and the dimensions that you need to link.

QUESTION 10

A company maintains separate environments for test, production, and quality assurance. The company uses the project deployment model for SQL Server Integration Services (SSIS) deployments.

You create an SSIS project to perform a weekly refresh of the company's data warehouse and cubes. The project has three packages.

You need to configure the project to ensure so that the test and production teams can run each package without manually adding server-specific information.

Which program should you use?

To answer, select the appropriate program in the answer area.

Hot Area:



Correct Answer:



QUESTION 11



You are developing a SQL Server Analysis Services (SSAS) tabular project for a Power View solution. You need to grant permission for salespersons to view only the data based on their sales territory. What should you do?

- A. Create a member and then create a Multidimensional Expressions (MDX) filter.
- B. Create a member and then create a Data Analysis Expressions (DAX) filter.
- C. Use SQL Server Management Studio to create a role. Then create a Multidimensional Expressions (MDX) filter.
- D. Use SQL Server Management Studio to create a role. Then create a Data Analysis Expressions (DAX) filter.

Correct Answer: D

QUESTION 12

You need to configure the Scenario attribute to ensure that business users appropriately query the Sales Plan measure. What should you do? (Each correct answer presents part of the solution. Choose all that apply.)

- A. Set the AttributeHierarchyVisible property to False.
- B. Set the IsAggregatable property to False.
- C. Set the Usage property to Parent.
- D. Set the DefaultMember property to the Forecast member.
- E. Set the AttributeHierarchyEnabled property to False.
- F. Set the RootMemberIf property to ParentIsMissing.

Correct Answer: CD

The Sales measure group is based on the FactSales table. The Sales Plan measure group is based on the FactSalesPlan table. The Sales Plan measure group has been configured with a multidimensional OLAP (MOLAP) writeback partition. Both measure groups use MOLAP partitions, and aggregation designs are assigned to all partitions.

[Latest 70-460 Dumps](#)

[70-460 PDF Dumps](#)

[70-460 Study Guide](#)



To Read the [Whole Q&As](#), please purchase the [Complete Version](#) from [Our website](#).

Try our product !

100% Guaranteed Success
100% Money Back Guarantee
365 Days Free Update
Instant Download After Purchase
24x7 Customer Support
Average 99.9% Success Rate
More than 800,000 Satisfied Customers Worldwide
Multi-Platform capabilities - [Windows](#), [Mac](#), [Android](#), [iPhone](#), [iPod](#), [iPad](#), [Kindle](#)

We provide exam PDF and VCE of Cisco, Microsoft, IBM, CompTIA, Oracle and other IT Certifications. You can view Vendor list of All Certification Exams offered:

<https://www.passapply.com/allproducts>

Need Help

Please provide as much detail as possible so we can best assist you.
To update a previously submitted ticket:



| | | |
|---|---|--|
|  <p>One Year Free Update Free update is available within One Year after your purchase. After One Year, you will get 50% discounts for updating. And we are proud to boast a 24/7 efficient Customer Support system via Email.</p> |  <p>Money Back Guarantee To ensure that you are spending on quality products, we provide 100% money back guarantee for 30 days from the date of purchase.</p> |  <p>Security & Privacy We respect customer privacy. We use McAfee's security service to provide you with utmost security for your personal information & peace of mind.</p> |
|---|---|--|

Any charges made through this site will appear as Global Simulators Limited.
All trademarks are the property of their respective owners.
Copyright © passapply, All Rights Reserved.